

# INSTALLATION INSTRUCTIONS

## 50051-1 FRONT MODULAR EUROGUARD

## 50051-5 FRONT ONE PIECE EUROGUARD

### 2004 Nissan Pathfinder Armada, Titan Crew Cab

#### Parts List :

<b>QTY</b>	( 1 ) Hardware kit including :	<b>Modular Euroguard version includes extra:</b>
( 1 ) Front Guard	( 2 ) 1/2 x 1 1/4" carriage head bolts	( 1 ) Brushguard set
( 2 ) Main mounting brackets (w/tow hooks) ( Driver & Passenger )	( 6 ) 1/2" Flat washers	( 2 ) Flat rubber gaskets
( 2 ) Main mounting brackets (w/o tow hooks) ( Driver & Passenger )	( 2 ) 1/2" Lock nuts	( 4 ) 3/8 x 1 1/2" Button allen hd bolts
( 2 ) Auxiliary mounting brackets	( 2 ) 3/8 x 1 1/4" button head bolts	( 4 ) 3/8" Flat washers
( 2 ) Tube spacers	( 2 ) 3/8" Flat washers	( 4 ) 3/8" Hex nuts
	( 2 ) 3/8" Lock nut	
	( 8 ) M8 x 30mm Hex head bolts	( 2 ) M12 x 30mm Hex head bolts
	( 8 ) 1/4" Flat washers	( 2 ) M12 x 50mm hex head bolts
	( 8 ) 1/4" Lock washers	( 4 ) 1/2" Lock washers

#### Tools Required:

13 & 12mm Socket	3/4" Wrench & Socket	Ratchet	1/4" Ratchet
7/32" Allen wrench	9/16" Socket	14" Ratchet extension	Flat screwdriver

#### Instructions :

**Approximated installation time: 30 min.**

1. Read and understand instructions completely before beginning installation.
  2. Included two sets of main mounting brackets, one of them is for vehicles with tow hooks, the other is for vehicles without tow hooks. Identify which set applies to the vehicle.
  3. Locate existing nuts behind the bumper of the vehicle. Picture 1 & 2.
- Vehicles with tow hooks:**
4. Place main mounting brackets as shown in Picture 3. Bolt to existing nuts using M6 x 30 hex head bolts, 1/4" flat and lock washers. Leave loose. Go to step 6. **Note:** Thread the bolts manually, then tighten using 1/4" ratchet.
- Vehicles without tow hooks:**
5. Locate existing threaded holes in the frame of the vehicle as shown in Picture 4. Place main mounting bracket and secure to the front threaded hole using a M12 x 30mm hex head bolt, flat and lock washers. Secure to the rear threaded hole using a M12 x 50mm hex head bolt, flat and lock washers, use a tube spacer between the frame and mounting bracket. Picture 5.
  6. To attach auxiliary mounting brackets, open the hood then remove the plastic covers in front of radiator pushing the clips with a flat screwdriver. Picture 6. Notice the 2 bolts holding bumper and remove them (Picture 7), using the 14" ratchet extension and a 12mm socket to loosen the visible bolt (Picture 8), for the other bolt use a 12mm wrench through the space between the grille and bumper of vehicle. From beneath the vehicle locate and finish to remove manually the bolts you loose before. Picture 9. Position the auxiliary mounting bracket as shown in Picture 10, secure to the thread holes where bolts were removed using M6 x 30 mm hex head bolt, 1/4" flat and lock washers. Leave loose. **Note:** Must thread bolts manually from underneath the vehicle, then tighten in the opposite order to removal.
  7. Place the Front Guard up to the main mounting brackets and bolt them together using 1/2 x 1 1/4" carriage head bolts, flat washers and lock nuts. Attach auxiliary mounting brackets using 3/8 x 1 1/4" button allen head bolt, flat washers and lock nuts. Leave loose.
  8. **Only Front modular guard version.** Install the brushguards using a gasket between the side plates and the brushguards. Secure into a place using 3/8 x 1 1/2" button allen head bolts, and corresponding nuts and washers. Leave hardware loose.
  9. Make any final adjustments to the alignment of the Front Guard and tighten all bolts. Replace the plastic covers in front of radiator. **Note:** Before tightening the fasteners, make sure the Front Guard does not interfere with opening and closing of the hood.
  10. You may need to periodically re-tighten the bolts.

#### Assembly Diagram :

**Mounting brackets for vehicles with tow hooks**



**Mounting brackets for vehicles without tow hooks**

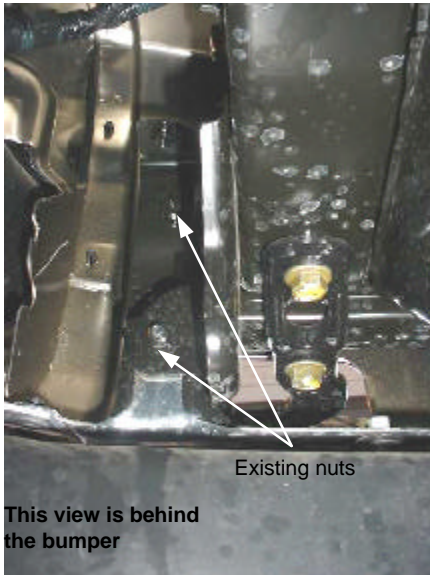


# INSTALLATION INSTRUCTIONS

## 50051-1 FRONT MODULAR EUROGUARD 50051-5 FRONT ONE PIECE EUROGUARD

### 2004 Nissan Pathfinder Armada, Titan Crew Cab

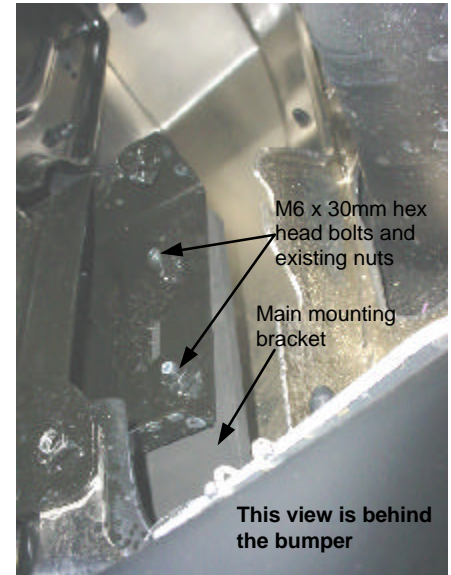
**Picture 1**



**Picture 2**



**Picture 3**

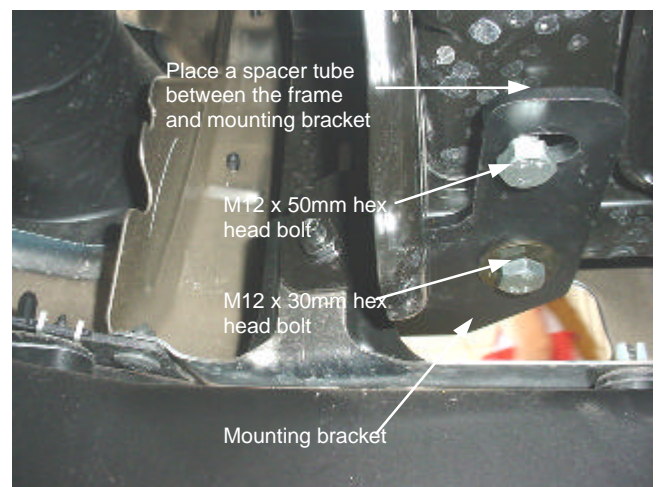


**Installation for models without tow hooks shown**

**Picture 4**



**Picture 5**





# INSTALLATION INSTRUCTIONS

## 50051-1 FRONT MODULAR EUROGUARD

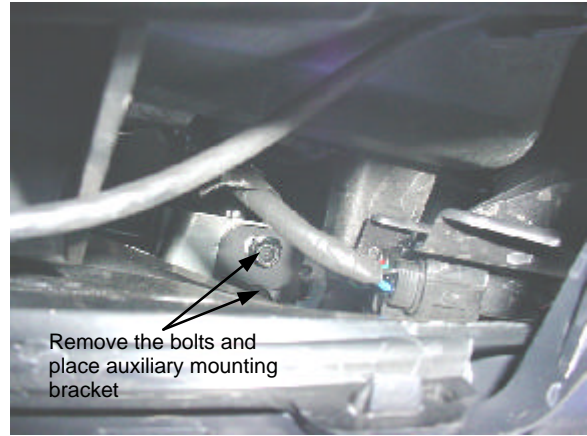
## 50051-5 FRONT ONE PIECE EUROGUARD

### 2004 Nissan Pathfinder Armada, Titan Crew Cab

Picture 6



Picture 7



Picture 8



Picture 9



Picture 10



#### Cleaning and care instructions :

Protect the finish with a non-abrasive automotive wax, (e.g. Pure Carnauba) on a regular basis. The use of any soap, polish, or wax that contains an abrasive is detrimental to the finish, as the compounds scratch the finish and cause corrosion.