



X-ACT CONTOUR

FLOOR LINERS

CARE AND USE INSTRUCTIONS – PN:52731

Thank you for selecting an X-act Contour™ Floor Liners from Husky Liners Inc. Your new liners are custom molded to fit your specific vehicle's floor board. The liners are made to take the place of your factory floor mats. **For correct fit, it is necessary to remove the factory floor mats before installing your new floor liners.** However, do not remove the factory-installed carpeting.

Your liners are made from an engineering resin that is lightweight and extremely tough and durable. The easiest way to clean your liner is with a damp cloth or sponge and soap and water. Windex®, 409® and ArmorAll® type cleaners work as well.



LEFT OR DRIVER'S SIDE



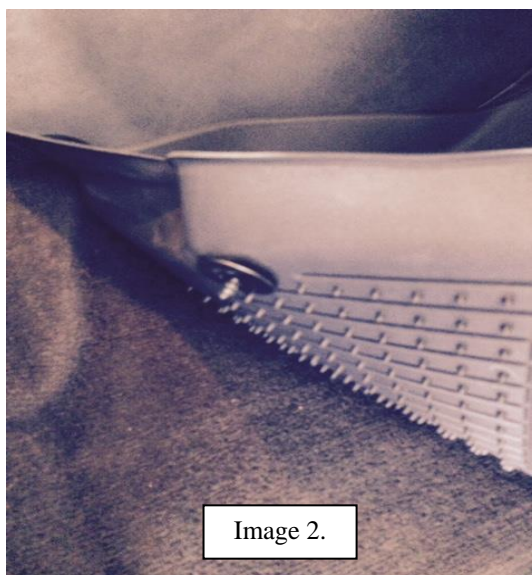
RIGHT OR PASSENGER'S SIDE

TO EASE INSTALLATION OF YOUR NEW FRONT LINERS, MOVE BOTH FRONT SEATS TO THE MOST REARWARD POSITION. WITH THIS DONE, INSTALL LINERS AS SHOWN IN THE IMAGES ABOVE. THE LINER SET DOES INCLUDE RETAINING POSTS THAT CAN BE ADDED TO THE VINYL FLOOR OF YOUR TRUCK PLEASE REFER TO THE INSTALLATION INSTRUCTIONS ON THE BACK OF THIS PAGE TO ADD POSTS.

IF YOUR TRUCK HAS A MANUAL TRANSFER CASE SHIFTER, PLEASE REVIEW THE TRIM INSTRUCTIONS FOR THIS FEATURE ON THE 3RD PAGE OF THIS INSTRUCTION.

YOUR NEW LINER SET INCLUDES OUR NEW FLOOR LINER RETAINING CLIP SYSTEM. THIS RETAINING CLIP GIVES THE EXTRA SECURITY WHILE KEEPING SPILLS AND DEBRIS TRAPPED INSIDE THE LINERS. TO INSTALL THE HUSKY® LINER RETAINING CLIPS, SIMPLY FOLLOW THE INSTRUCTIONS BELOW:

- 1) Pre fit your new Xact Contour floor liner in your vehicle (Image 1).
- 2) Insert the retaining post screw into the bottom of the Xact Contour liner retainer (Image 2).
- 3) Press down on the liner to pre-mark the retaining post screw into the flooring (Image 3).
- 4) Screw the carpet screw into the flooring with a flat blade screwdriver (Image 4).
- 5) Snap the Xact Contour liner over the top of the carpet screw post (Image 3).



IF YOU HAVE ANY QUESTIONS REGARDING THE INSTALLATION OF YOUR HUSKY® LINER RETAINING CLIPS, JUST GIVE US A CALL MONDAY THROUGH FRIDAY FROM 8:00 AM – 5:00 PM CENTRAL TIME AT 800-344-8759 OR E-MAIL US AT: contactus@huskyliners.com.

TO TRIM FOR A MANUAL TRANSFER CASE SHIFTER, USE THE MOLDED IN TRIM GROOVE IN THE LINER AS YOUR TRIMMING GUIDE AND REMOVE THE SECTION OF THE LINER THAT MATCHES UP TO THE TRANSFER CASE SHIFTER HOUSING. A UTILITY KNIFE OR HEAVY SCISSORS TO REMOVE THIS SECTION OF LINER.

