



Technical Bulletin

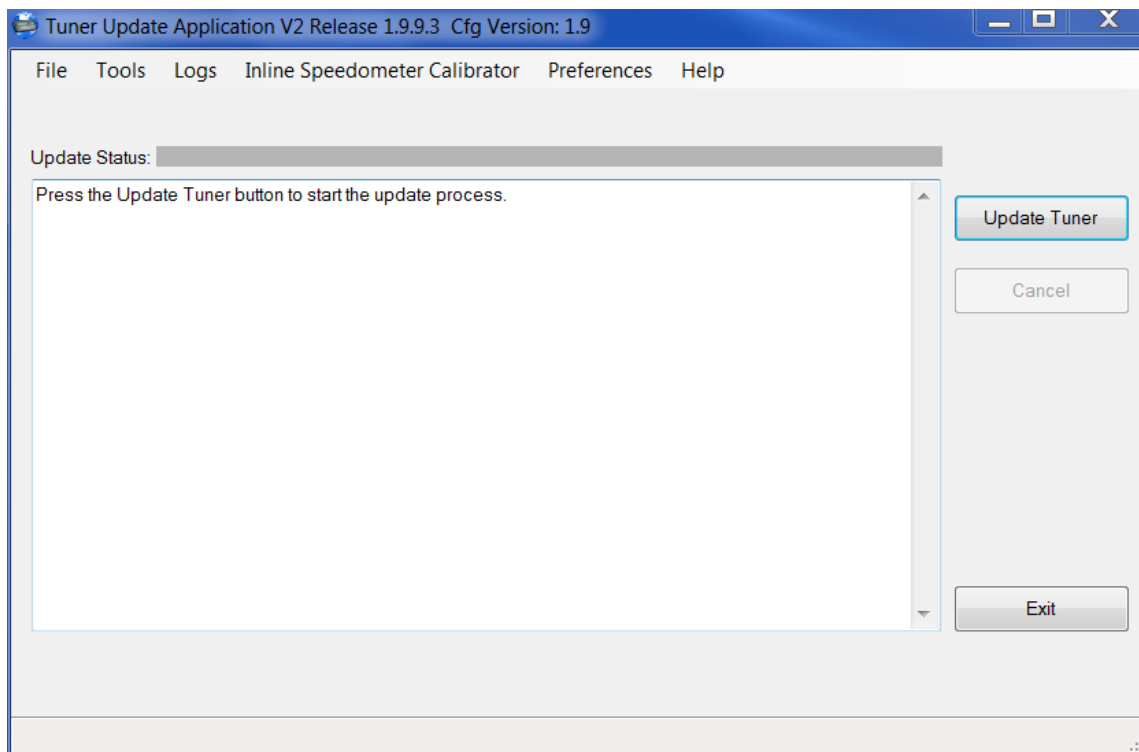
Subject: Part #730127 & 730128 Inline Speedometer Calibrator Firmware Update

Issue: Some vehicles will display the “Service 4WD” and “Service Stabilitrak” messages when the inline calibrator is installed. This is caused by the inline calibrator’s programmable module not processing messages passing through the vehicle’s network fast enough. Hypertech has released an update to the firmware in the module to fix this issue. Below are step by step instructions on how to update the inline calibrator module for the fix.

Note: We recommend updating all 730127 & 730128 calibrators with serial numbers 1784449 or lower for this fix prior to installing them on the vehicle.

Step 1: Open the Hypertech Tuner Update Software.

Step 2: Check the software version. The current version should be Release 1.9.9.3 or higher.



If your software is not at this revision, go to Step 3. If you are at the latest version, then skip to Step 4.

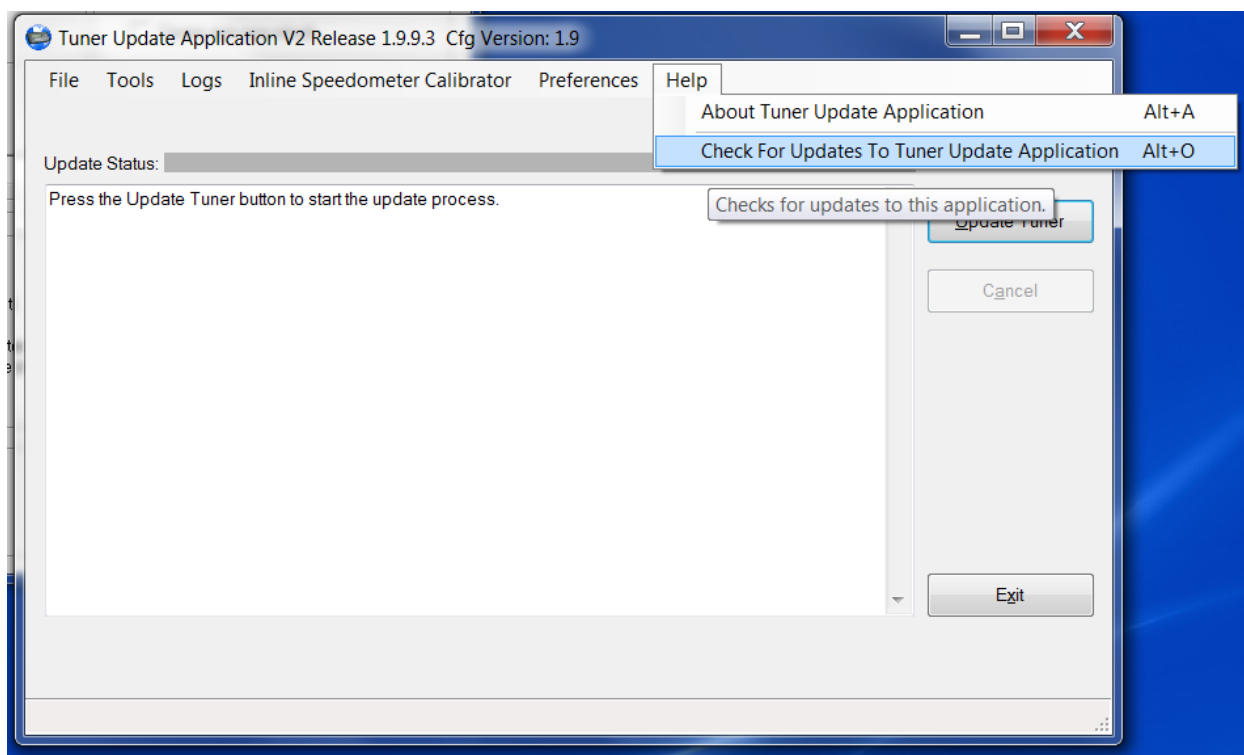
Tech Support

Phone: (901) 382-1888

Fax: (901) 273-0002

techsupport@hypertech.com

Step 3: Click on “Help” and select “Check For Updates To Tuner Update Application”.



Follow the messages on the screen until the new Tuner Update Software version is installed.

Tech Support

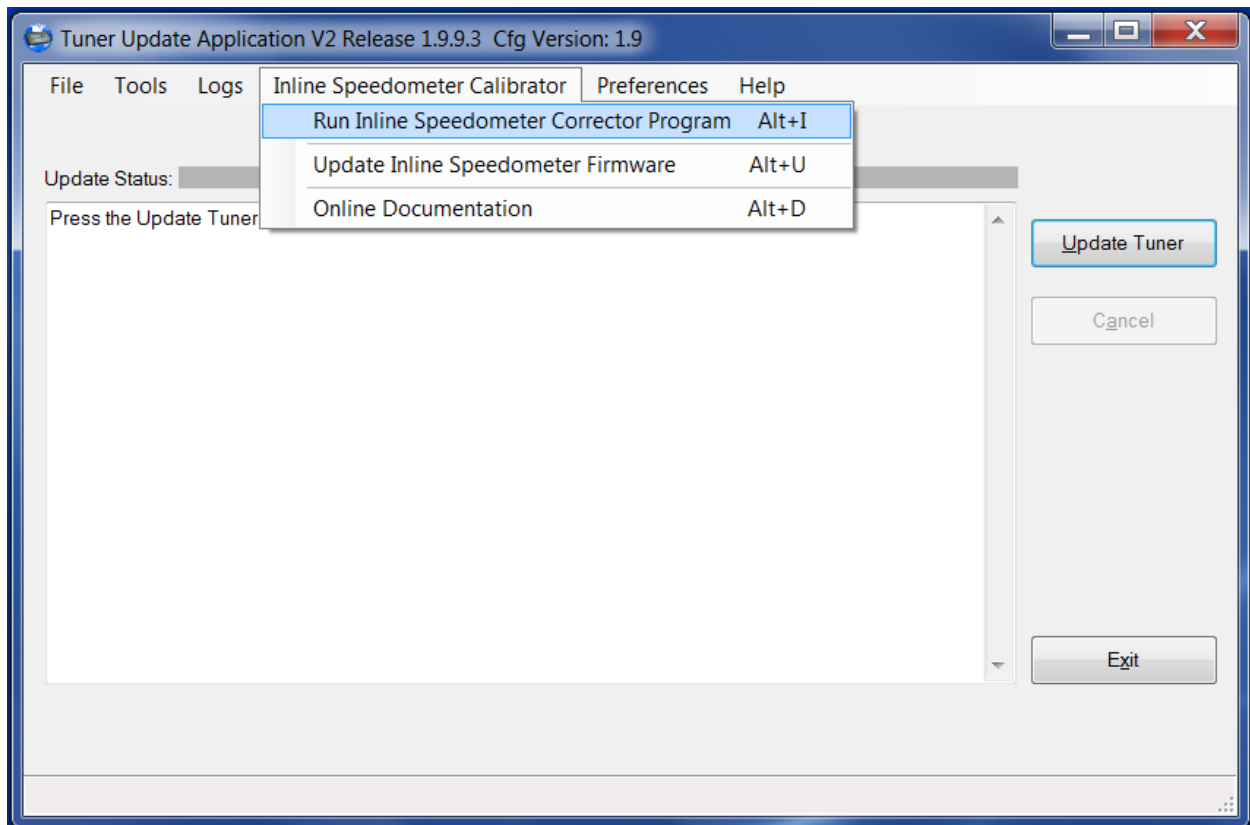
Phone: (901) 382-1888

Fax: (901) 273-0002

techsupport@hypertech.com

Step 4: Connect the inline calibrator module to the computer using the USB cable.

Step 5: Open the Tuner Update Software, and select “Inline Speedometer Calibrator” from the menu options. Select “Run Inline Speedometer Corrector Program”, and follow the normal procedure to configure the calibrator for the vehicle.



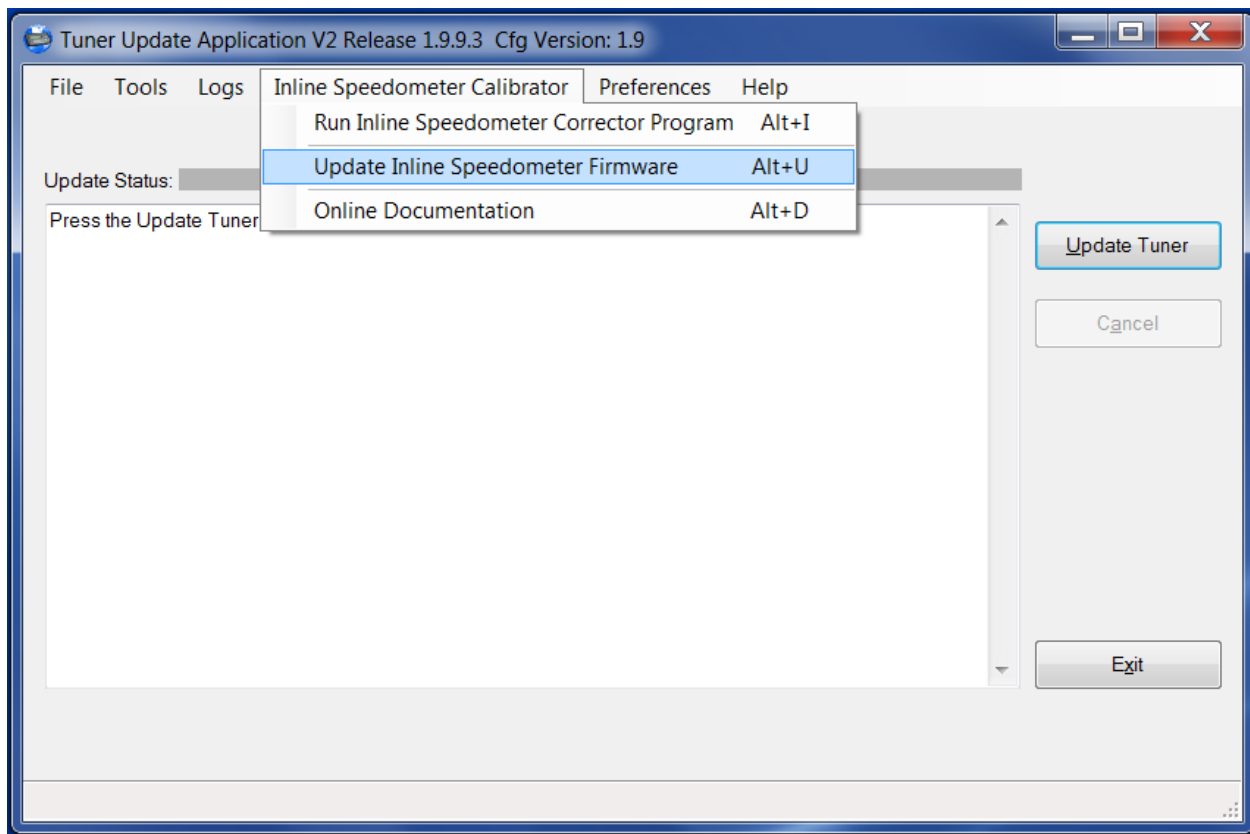
Tech Support

Phone: (901) 382-1888

Fax: (901) 273-0002

techsupport@hypertech.com

Step 6: Close the Inline Speedometer Corrector Programmer, and select “Inline Speedometer Calibrator” again from the Tuner Update menu options, and then select “Update Inline Speedometer Firmware”. This will open the Firmware Update Tool.



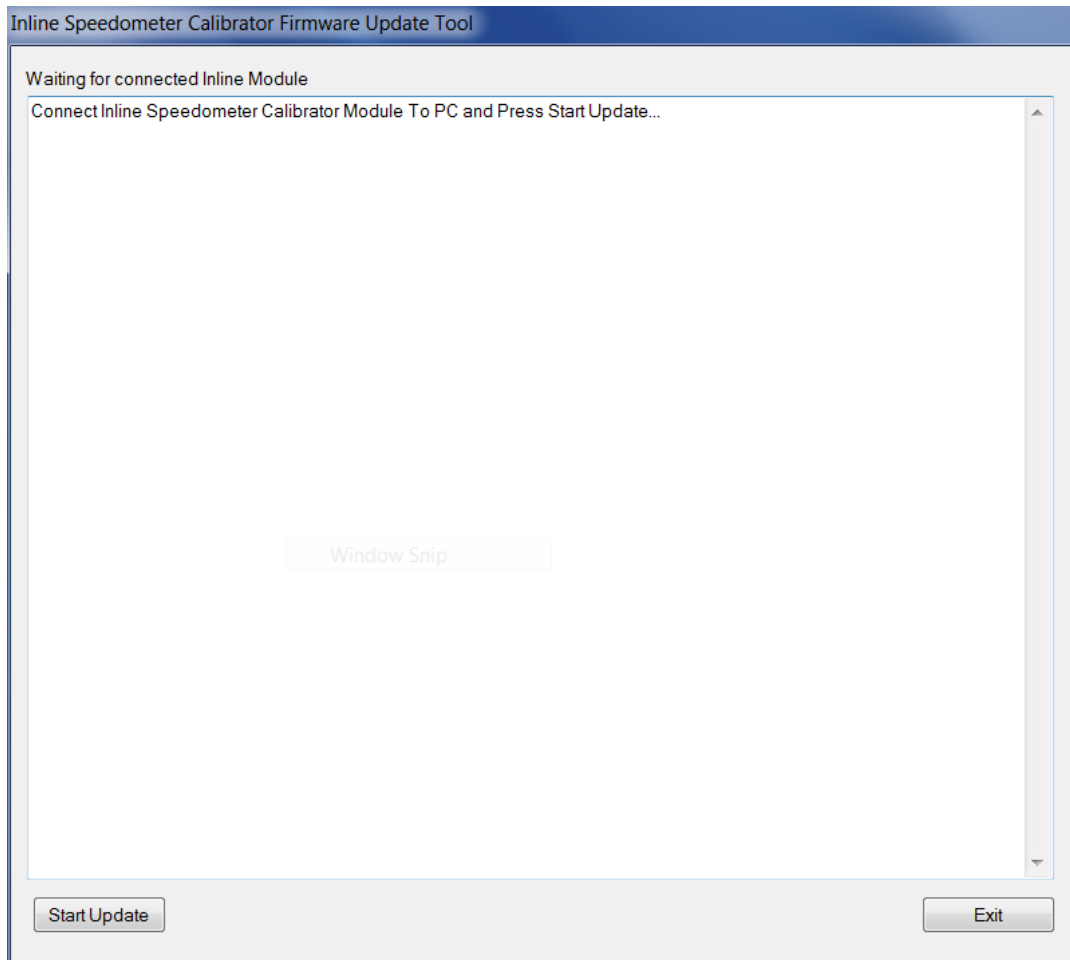
Tech Support

Phone: (901) 382-1888

Fax: (901) 273-0002

techsupport@hypertech.com

Step 7: Click on the “Start Update” button, and follow the instructions on the screen.

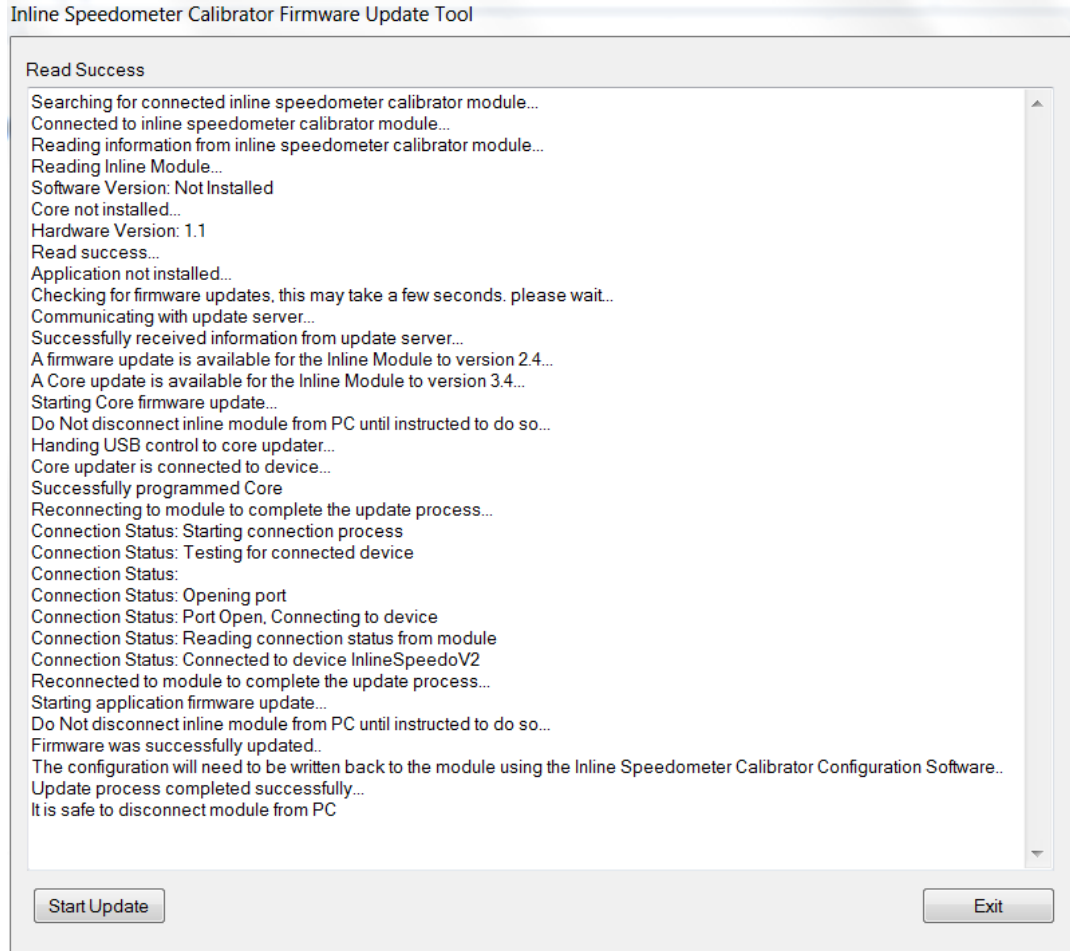


Tech Support

Phone: (901) 382-1888

Fax: (901) 273-0002

techsupport@hypertech.com



Once the update is complete, click "Exit" to close out the Update Tool. The module should now be updated to the latest firmware version. To verify, run the Inline Speedometer Corrector Program, and click "Read Device". The new software version will begin with 03.04.

Tech Support

Phone: (901) 382-1888

Fax: (901) 273-0002

techsupport@hypertech.com

Device Configuration Information



Configuration Name: GM All Trucks Full-Size SUVs

Scaler Value: 1.029

Configuration Status: Valid

Part Number:

Serial Number:

PN/SN Valid: Invalid

Hardware Version: 01.00

Software Version: 03.04.02.04

OK

Tech Support

Phone: (901) 382-1888

Fax: (901) 273-0002

techsupport@hypertech.com