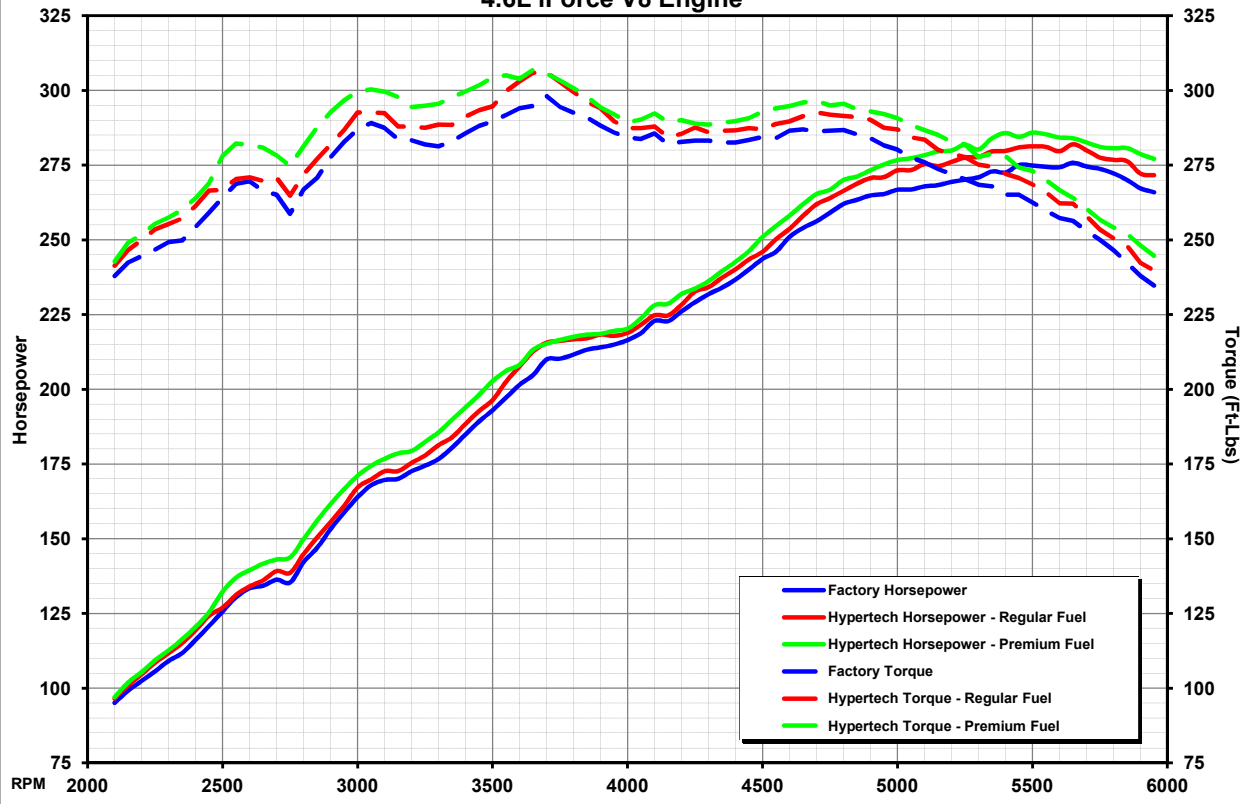


HYPERTECH DYNAMOMETER TEST RESULTS

2010-2016 Toyota Tundra, Sequoia, Lexus GX460
4.6L iForce V8 Engine



Tuning	Horsepower		Torque	
	Maximum	Gain	Maximum	Gain
Hypertech Tuning Premium Fuel	286 HP @ 5500 RPM	+13 HP @ 5400 RPM	307 Ft-Lbs @ 3650 RPM	+17 Ft-Lbs @ 2850 RPM
Hypertech Tuning Regular Fuel	282 HP @ 5650 RPM	+8 HP @ 3650 RPM	306 Ft-Lbs @ 3700 RPM	+11 Ft-Lbs @ 3650 RPM
Factory Stock Tuning	276 HP @ 5650 RPM	—	298 Ft-Lbs @ 3700 RPM	—

RPM	Horsepower		
	Factory HP	Hypertech Regular Fuel HP (Gain)	Hypertech Premium Fuel HP (Gain)
2100	95	97 (+2)	97 (+2)
2500	126	127 (+1)	132 (+6)
2850	147	150 (+3)	156 (+9)
3000	164	167 (+3)	171 (+7)
3500	193	196 (+3)	203 (+10)
3650	205	213 (+8)	213 (+8)
3700	210	216 (+6)	215 (+5)
4000	217	219 (+2)	220 (+3)
4500	244	246 (+2)	251 (+7)
5000	267	273 (+6)	277 (+10)
5400	273	280 (+7)	286 (+13)
5500	275	281 (+6)	286 (+11)
5650	276	282 (+6)	284 (+8)
5950	266	272 (+6)	277 (+11)

RPM	Torque		
	Factory Torque	Hypertech Regular Fuel Torque (Gain)	Hypertech Premium Fuel Torque (Gain)
2100	238	241 (+3)	243 (+5)
2500	264	267 (+3)	278 (+14)
2850	271	277 (+6)	288 (+17)
3000	287	293 (+6)	300 (+13)
3500	290	295 (+5)	304 (+14)
3650	295	306 (+11)	307 (+12)
3700	298	306 (+8)	306 (+8)
4000	284	287 (+3)	289 (+5)
4500	284	287 (+3)	293 (+9)
5000	280	287 (+7)	291 (+11)
5400	265	272 (+7)	278 (+13)
5500	263	269 (+6)	273 (+10)
5650	256	262 (+6)	264 (+8)
5950	235	240 (+5)	245 (+10)

Tuning Features

- Automatically Optimizes Tuning for Regular and Premium Fuels On-the-Fly
- Part Throttle Tuning Improves Power Response and Drivability
- Improved Throttle Response Under All Driving Conditions
- Easy Plug-and-Play Installation with Factory Style Connectors (No Splicing)
- Untraceable After Uninstalling
- Fully Internet Updateable

Downloadable Tunes for Aftermarket Air Intakes

AEM Brute Force Intake	AIRAID Air Intake System	RBP Air Intake System
AFE MagnumFORCE Stage 2Si	K&N 77 Series Air Intake (metal tube)	Volant Air Intake System
AFE MagnumFORCE Stage 2	K&N 63 Series Air Intake (plastic tube)	Stock/Factory Air Intake



3215 Appling Rd., Bartlett, TN 38133 www.Hypertech.com
(901) 385-1888 © Hypertech, Inc. 2015

Vehicle Tested: 2013 Toyota Tundra
Engine: 4.6L iForce
Transmission: 6-SPD AUTO
Gear Ratio: 3.91:1 LSD
Tire Size: 255/70R18
Test Date: 8/13/2013

Hypertech Part Number:
Max Energy Interceptor

706001