



## NISSAN 05-18 FRONTIER FENDER LINER

Thank you for choosing Rough Country for your suspension needs.

Rough Country recommends a certified technician install this kit. In addition to these instructions, professional knowledge of disassemble/reassembly procedures as well as post installation checks must be known. Attempts to install this kit without this knowledge and expertise may jeopardize the integrity and/or operating safety of the vehicle.

Please read instructions before beginning installation. Check the kit hardware against the parts list. Be sure you have all needed parts and know where they go. Also please review tools needed list and make sure you have needed tools.

### PRODUCT USE INFORMATION

**▲WARNING** As a general rule, the taller a vehicle is, the easier it will roll. Seat belts and shoulder harnesses should be worn at all times. Avoid situations where a side rollover may occur. Generally, braking performance and capability are decreased when larger/heavier tires and wheels are used. Take this into consideration while driving. Do not add, alter, or fabricate any factory or after-market parts to increase vehicle height over the intended height of the Rough Country product purchased. Mixing component brands is not recommended.

Rough Country makes no claims regarding lifting devices and excludes any and all implied claims. We will not be responsible for any product that is altered. If question exist we will be happy to answer any questions concerning the design, function, and correct use of our products by calling 1-800-222-7023.

**▲NOTICE** These inner fenders are designed using the OE hole locations, and with Rough Country's Flat Fender set. If you have any other aftermarket, or OE fenders, some modifications may be necessary to complete the install.

### ▲NOTICE NOTICE TO DEALER AND VEHICLE OWNER

Any vehicle equipped with any Rough Country product should have a "Warning to Driver" decal installed on the inside of the windshield or on the vehicle's dash. The decal should act as a constant reminder for whoever is operating the vehicle of its unique handling characteristics.

INSTALLING DEALER - it is your responsibility to install the warning decal and forward these installation instructions on to the vehicle owner for review. These instructions should be kept in the vehicle for its service life.

#### Kit Contents:

Dr & Pass Rear Fender Liner  
4300BAG1  
Instructions

#### 4300Bag1:

(1) 5/16" x 1.5" Button Head Bolt  
(1) 5/16" Flat Washer  
(3) 5/16" x 1" Button Head Bolts  
(4) 5/16" Nutserts  
(1) 3/8" Hex Nut  
(1) Spacer  
(1) 5/16" x 1.25" Hex Head Bolt

#### Wrenches And Tools Needed:

3/16" Allen  
Paint Pen  
17/32" Drill  
Drill Motor  
Wheel Chocks



1. Make sure vehicle is off and in park before beginning. Lift vehicle for easy access or may be completed on the ground using wheel chocks to prevent movement.
2. Place the fender liner in the rear fender. **Photo 1.**
3. Set desired position of the fender liner and mark the 2 holes, to be drilled in the frame, using a paint pen. **Photo 2.**



**PHOTO 1**

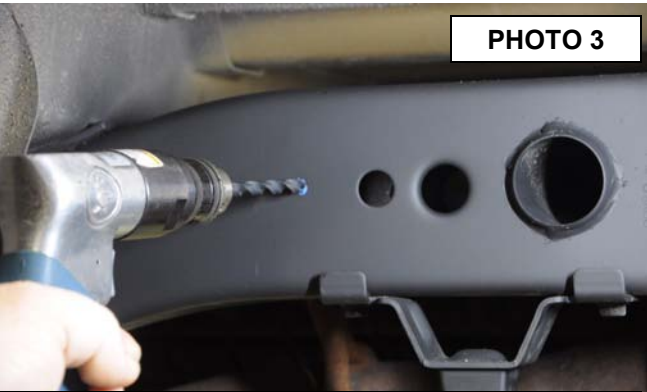
**Place fender liner in rear fender.**



**PHOTO 2**

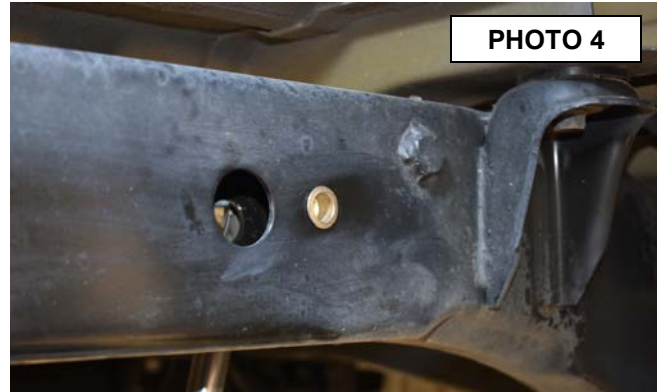
**Mark holes for drilling.**

4. Using a 17/32" drill, drill the marked holes in the frame. **Photo 3.**
5. Fully insert the supplied 5/16" nutsert into the drilled holes. **Photo 4.**



**PHOTO 3**

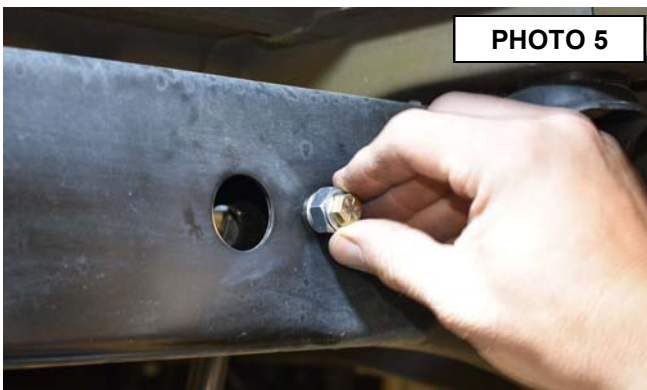
**Drill using a 17/32" drill.**



**PHOTO 4**

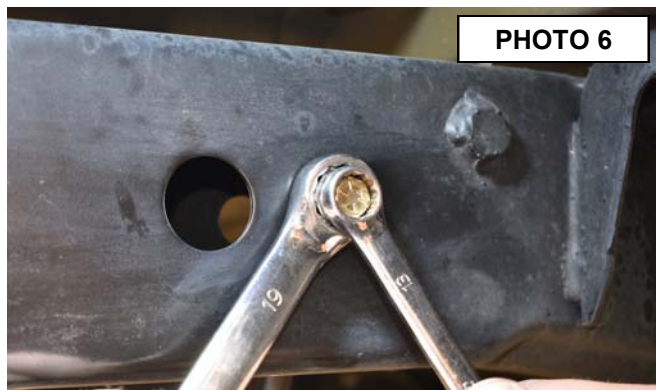
**Install supplied nutserts.**

6. Install the supplied 5/16" x1.25" bolt, flat washer, and 3/8" nut into the nutsert . **Photo 5.**
7. Using a 1/2" wrench on the bolt and a 9/16" to hold the nut, tighten the bolt until the nutsert is fully crimped in the frame rail. **Photo 6.**



**PHOTO 5**

**Use supplied bolt and 3/8" nut for nutsert install.**



**PHOTO 6**

**Tighten the bolt, holding the nut to crimp nutsert.**

8. The driver rear will use the supplied spacer between the frame and the fender liner. **Photo 7.**
9. Install the fender liner using the supplied 5/16" button head bolts. The 1.5" long bolt will be used on the driver rear mount. Tighten using a 3/16" Allen. **Photo 8.**



**Spacer is used on driver rear only.**



**Tighten using a 3/16" Allen.**

10. Repeat process on opposite side.
11. This completes the install. Thanks for buying Rough Country.





By purchasing any item sold by Rough Country, LLC, the buyer expressly warrants that he/she is in compliance with all applicable , State, and Local laws and regulations regarding the purchase, ownership, and use of the item. It shall be the buyers responsibility to comply with all Federal, State and Local laws governing the sales of any items listed, illustrated or sold. The buyer expressly agrees to indemnify and hold harmless Rough Country, LLC for all claims resulting directly or indirectly from the purchase, ownership, or use of the items.

