

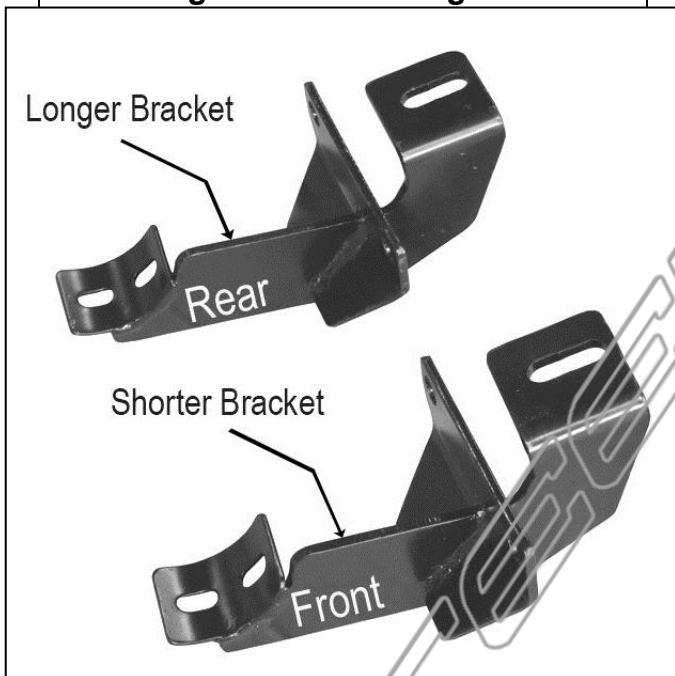
INSTALLATION INSTRUCTIONS

SIDEBARS – 3" Round, 4" Oval & 4.5" Oval
07-11 DODGE NITRO
PART NUMBER

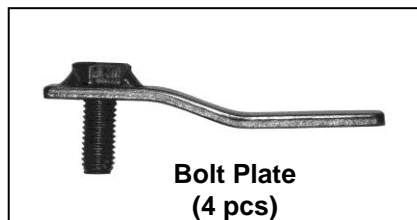
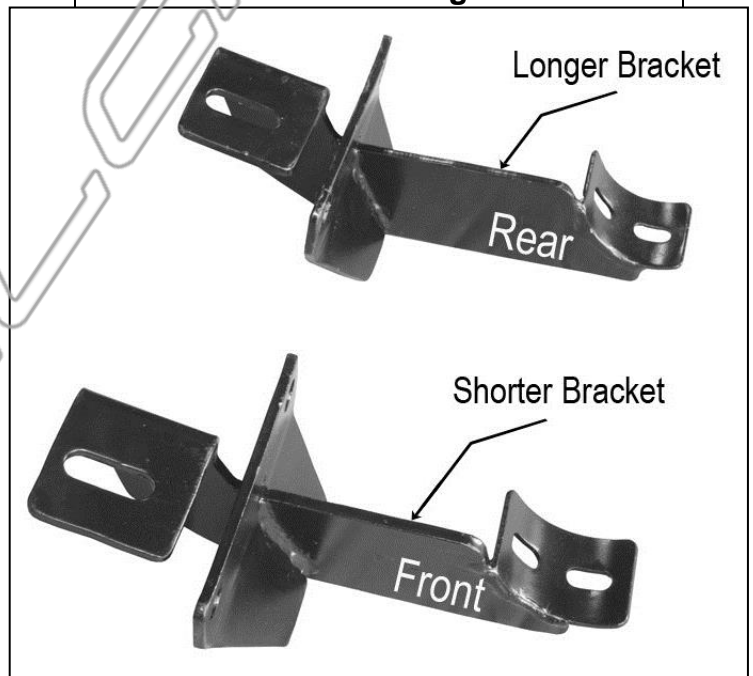
PARTS LIST:

1	Passenger Sidebar	4	10-1.50mm x 25mm Bolt Plates
1	Driver Sidebar	4	10mm Nylock Nuts
1	Passenger/Right Front Mounting Bracket	4	10mm ID x 26mm OD x 3mm Flat Washers
1	Passenger/Right Rear Mounting Bracket	16	8-1.25mm x 25mm Hex Head Bolts
1	Driver/Left Front Mounting Bracket	8	8mm Nylock Nuts
1	Driver/Left Rear Mounting Bracket	8	8mm Lock Washers
		24	8mm ID x 22mm OD x 1.5mm Flat Washers

Passenger Side Mounting Brackets



Driver Side Mounting Brackets



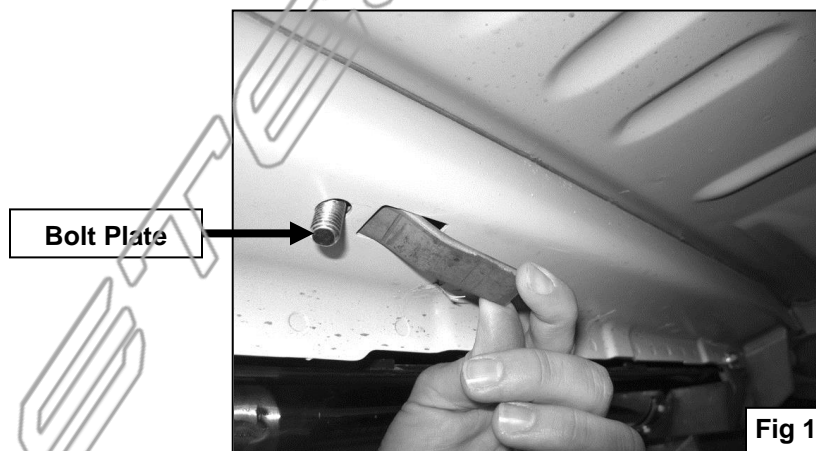
PROCEDURE:

1. **REMOVE CONTENTS FROM BOX. VERIFY ALL PARTS ARE PRESENT. READ INSTRUCTIONS CAREFULLY BEFORE STARTING INSTALLATION.**
2. Starting on the driver side rear of the vehicle, insert (1) 10-1.50mm x 25mm Bolt Plate into rectangular hole located in the side panel, so threaded Bolt Plate drops through round hole (**Figure 1**).
3. Partially hang driver side rear Mounting Bracket to already inserted Bolt Plate using the included (1) 10mm Nylock Nut and (1) 10mm Flat Washer to secure it (**Figure 2**).
NOTE: Rear Mounting Brackets are $\frac{1}{4}$ " longer than front Mounting Brackets and the 10mm mounting tab location on the brackets face the front of the vehicle. Make sure that the vertical mounting locations in the Brackets are on the outer side of pinch weld.
4. Attach Mounting Bracket to pinch weld using the included (2) 8-1.25mm x 25mm Hex Head Bolts, (2) 8mm Nylock Nuts, and (4) 8mm Flat Washers (**Figure 2**). Do not tighten at this time.
5. Repeat steps 2-4 for driver side front Mounting Bracket.
6. Position driver Sidebar onto Mounting Brackets. Attach Side Bar to Mounting Brackets using the included (4) 8-1.25mm x 25mm Hex Head Bolts, (4) 8mm Lock Washers, and (4) 8mm Flat Washers (**Figure 3**). Do not tighten at this time.
7. Level and adjust Side Bar properly; and then tighten all hardware at this time.
8. Repeat steps 2-7 for passenger Sidebar.
9. Do periodic inspections to the installation to make sure that all hardware is secure and tight.

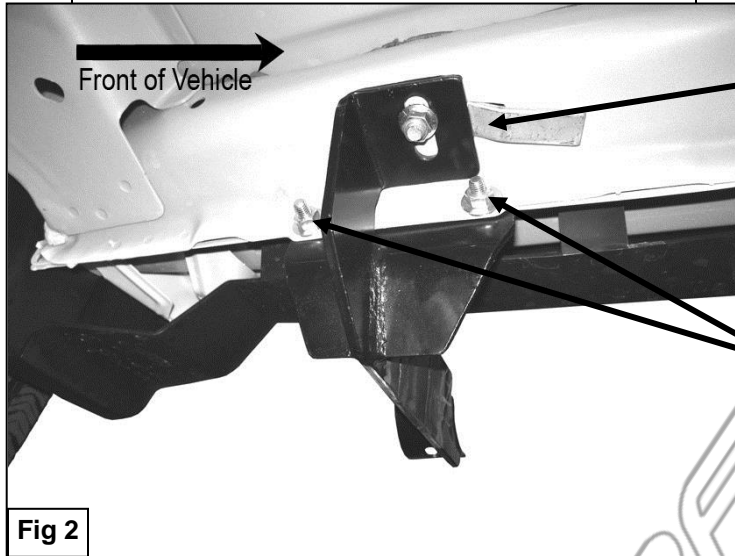
To protect your investment, wax this product after installing. Regular waxing is recommended to add a protective layer over the finish. Do not use any type of polish or wax that may contain abrasives that could damage the finish.

For stainless steel: Aluminum polish may be used to polish small scratches and scuffs on the finish. Mild soap may be used also to clean the Sidebar.

For gloss black finishes: Mild soap may be used to clean the Sidebar.



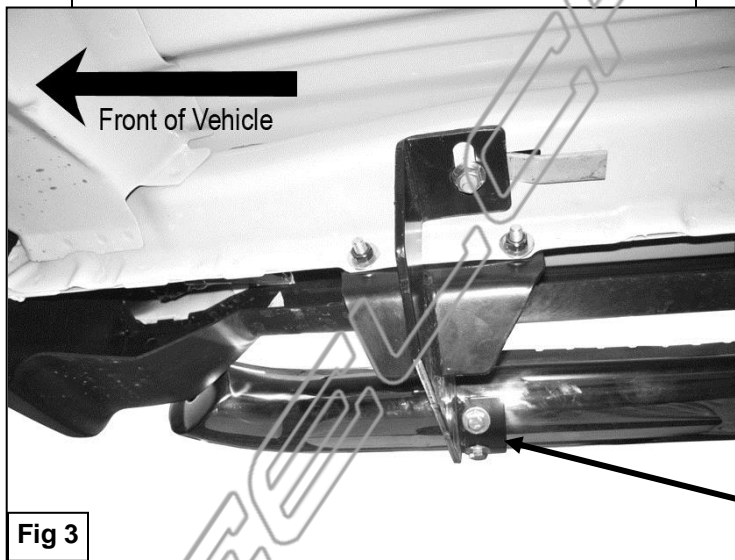
Driver Side Rear Mounting Bracket Shown



10mm Bolt Plate
10mm Nylock Nut
10mm Flat Washer

8mm Hex Head Bolts
8mm Nylock Nuts
8mm Flat Washers

Passenger Side Front Mounting Bracket Shown



8mm Hex Head Bolts
8mm Lock Washers
8mm Flat Washers

