



SIGNATURE OF QUALITY

AUTOMOTIVE PRODUCTS, INC.

# INSTRUCTIONS—INSTRUCCIONES—CONSIGNES

CLASS III RECEIVER HITCH  
APPLICATIONS: 1983-2011 FORD RANGER  
APP PART # 65-1065

ITEM	QUANTITY	DESCRIPTION	TOOLS NEEDED
1	1	CLASS 3 HITCH ASSEMBLY	TORQUE WRENCH
2	2	SPACER PLATE	
3	2	M12 STUD PLATE	
4	2	M14 HEX CAP SCREW	21MM SOCKET
5	2	M14 FLAT WASHERS	
6	2	M14 SPRING LOCK WASHERS	
7	2	M12 HEX NUTS	18MM SOCKET
8	2	M12 FLAT WASHERS	
9	2	M12 SPRING LOCK WASHERS	

**WARNING: Never exceed the capacity ratings shown on the receiver hitch or the tow vehicle. See your vehicle's owners guide for towing guidelines.**

1. Remove contents from box, verify if all parts listed are present and free from damage. Carefully read and understand all instructions before attempting installation.
2. Remove the rear OEM hex cap screws (fig 1). Repeat for both sides.
3. Position the hitch assembly (item 1) on vehicle, and install the M14 hex cap screws (item 4), M14 flat washers (item 5), and M14 lock washers (item 6), into the frame holes where the OEM hex cap screws were removed from (fig 2).
4. If front holes in the frame already exist, proceed to step 5. If no front holes exist for the hitch assembly brackets, use the hitch assembly bracket holes as a template and drill two 1/2" diameter holes into the frame (fig 3).
5. Install spacer plates (item 2) between hitch assembly bracket and frame for the front mounting holes (fig 4).
6. Install M12 stud plates (item 3) through top of front mounting hole and secure with M12 flat washers (item 8), M12 lock washers (item 9), and M12 hex nuts (item 7) (fig 5).
7. Level and align hitch assembly and tighten all hardware at this time. Torque M12 hardware to 75-80 ft-lbs and M14 hardware to 130-140 ft-lbs. (fig 6).

Note: Optional electrical bracket mounting holes located on drivers side tab.

NOTICE: This product complies with all safety specifications and requirements defined for V.E.S.C. regulation V-5 & SAE J684

### CARE INSTRUCTIONS

- BLACK FINISHES SHOULD BE CLEANED WITH MILD SOAP AND WATER



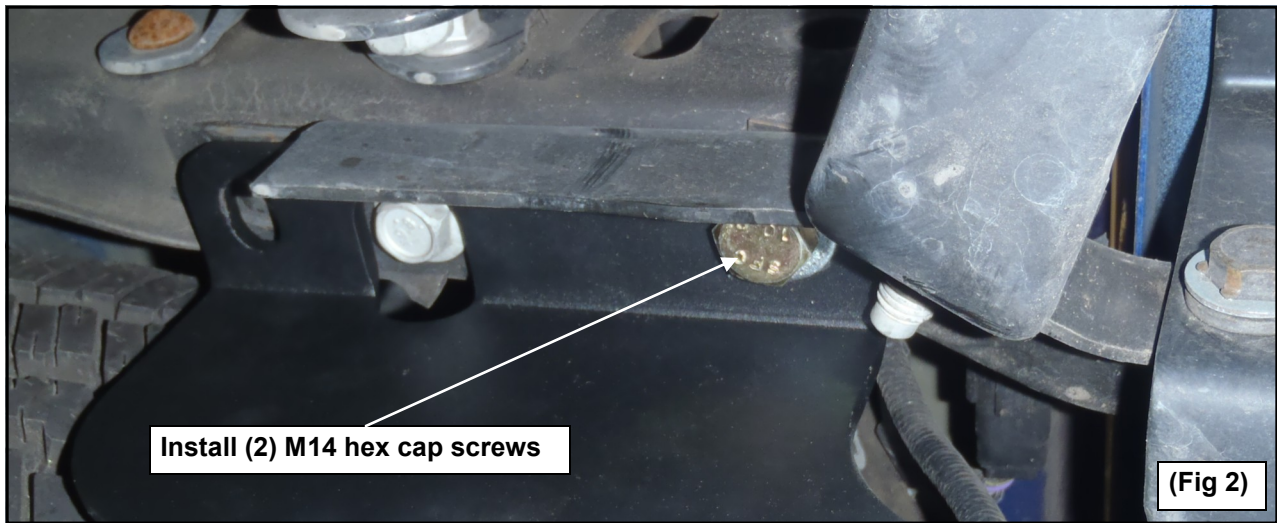
Westin Automotive Products, Inc.  
320 Covina Blvd  
San Dimas, Ca. 91773

Thank You for choosing Westin products  
For Additional installation assistance please call  
Customer service (800) 793-7846  
www.westinautomotive.com



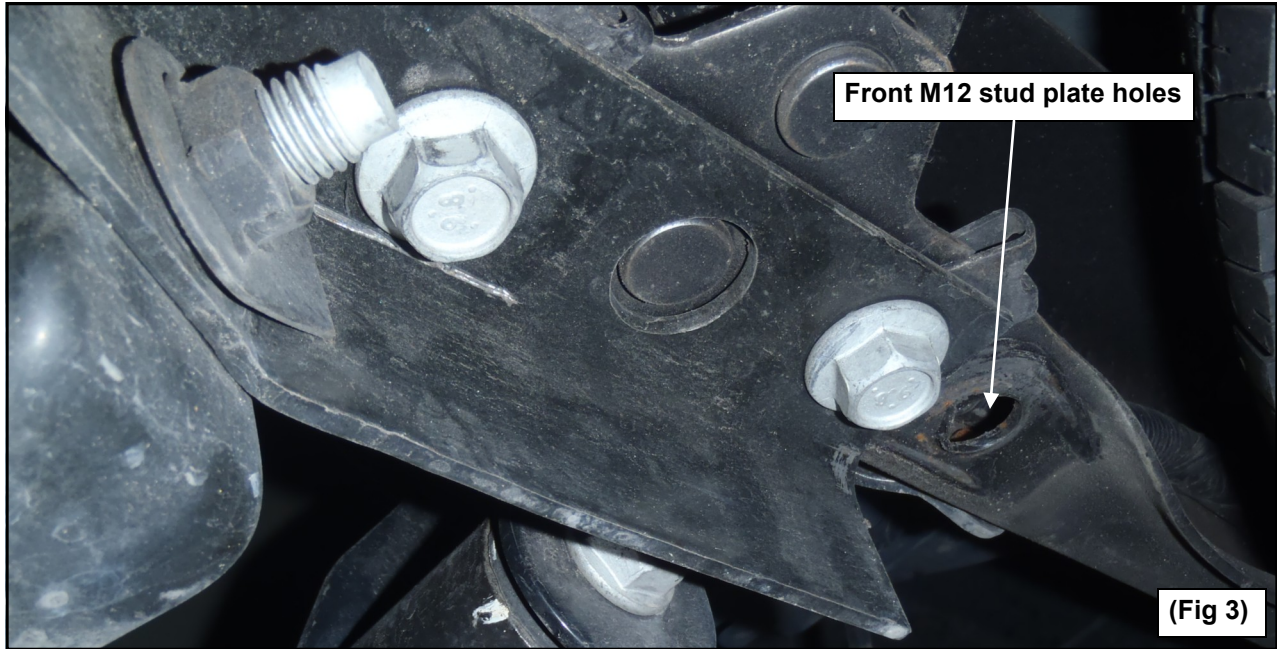
Remove (2) OEM hex cap screws

(Fig 1)



Install (2) M14 hex cap screws

(Fig 2)



Front M12 stud plate holes

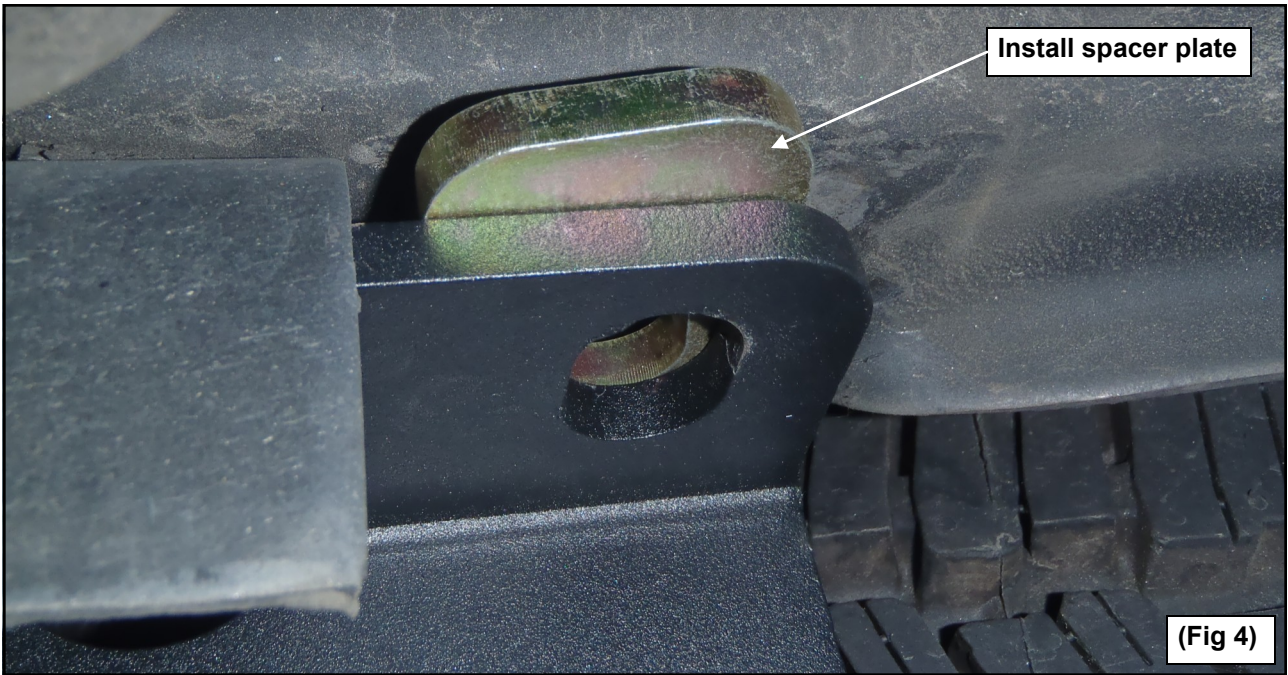
(Fig 3)



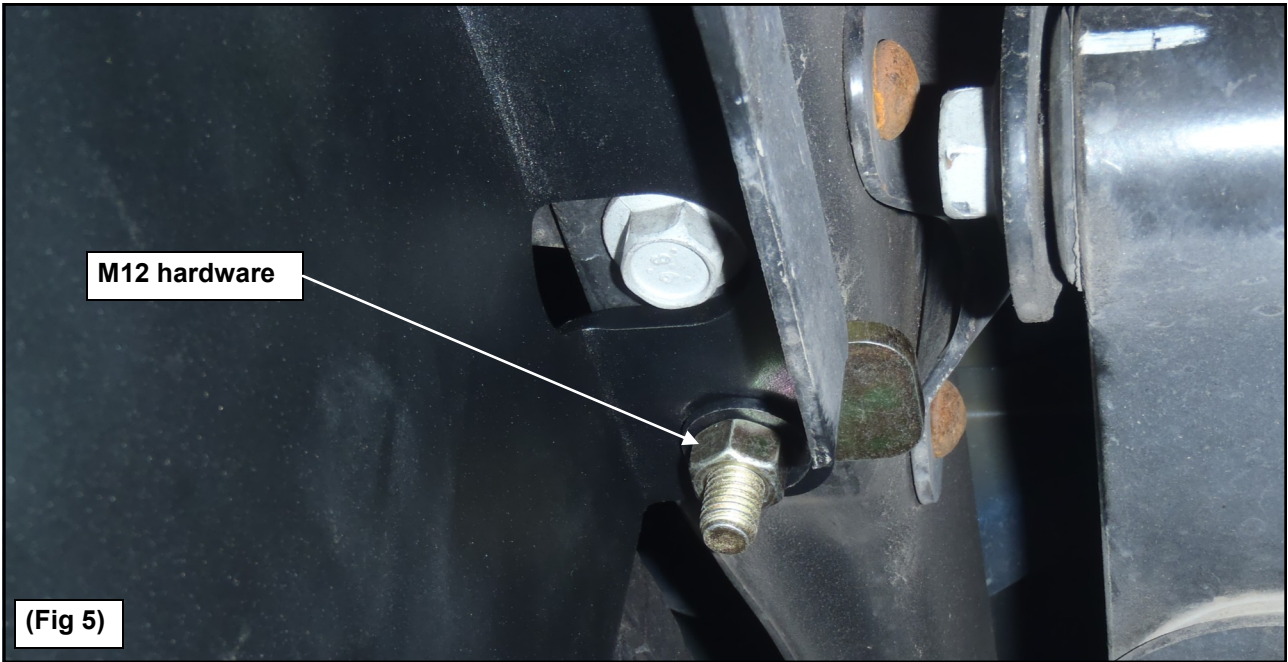
Westin Automotive Products, Inc.  
320 Covina Blvd  
San Dimas, Ca. 91773

Thank You for choosing Westin products  
For Additional installation assistance please call  
Customer service (800) 793-7846  
[www.westinautomotive.com](http://www.westinautomotive.com)





(Fig 4)



(Fig 5)



Westin Automotive Products, Inc.  
320 Covina Blvd  
San Dimas, Ca. 91773

Thank You for choosing Westin products  
For Additional installation assistance please call  
Customer service (800) 793-7846  
[www.westinautomotive.com](http://www.westinautomotive.com)



AUTOMOTIVE PRODUCTS, INC.  
San Dimas, California

## WARNINGS & NOTICES FOR THE INSTALLATION OF WESTIN TOWING PRODUCTS - CLASS III RECEIVER HITCH

### NOTICE

Westin Receiver Hitches are designed to accommodate a 2" - square receiver draw bar rated for class III/IV towing. Closely follow all Westin Installation Instructions for the proper installation of product. Improper installation can result in death, serious injury, and/or product and vehicle damage. In the operation of these products, it is imperative to observe precautions for your personal safety and the safety of others.

### **WARNING**

Failure to follow these instructions could lead to death, personal injury, and / or property damage.

#### FASTENERS:

All Westin supplied fasteners must be utilized and installed in accordance with the installation instructions and apply torque to the specifications as defined. **DOUBLE CHECK ALL FASTENERS BEFORE INITIAL USE, AND PERIODICALLY IN THE FUTURE TO ENSURE PROPER FUNCTION AND SAFETY.**

#### DRILLING:

Most Westin products do not require drilling for installation. If drilling is defined as required, use caution when drilling a vehicle. **FAILURE TO REVIEW AN AREA TO BE DRILLED MAY RESULT IN PERSONAL INJURY AND/OR INJURY TO OTHERS AS WELL AS VEHICLE DAMAGE.**

#### EYE PROTECTION:

**ALWAYS WEAR SAFETY GLASSES OR GOGGLES DURING THE INSTALLATION PROCESS TO AVOID PERSONAL INJURY.**

#### MAXIMUM TOWING/CARRYING CAPACITY:

The Westin Receiver Hitches will have a visible tow rating label affixed directly on the product. User should never exceed the vehicle manufacturers maximum tow and weight rating regardless of the capacity of the hitch. **FAILURE TO FOLLOW THESE GUIDELINES WILL VOID THE WESTIN WARRANTY AND MAY RESULT IN PERSONAL INJURY AND/OR INJURY TO OTHERS AS WELL AS VEHICLE DAMAGE.**



Westin Automotive Products, Inc.  
320 Covina Blvd  
San Dimas, Ca. 91773