



## Installation Instructions

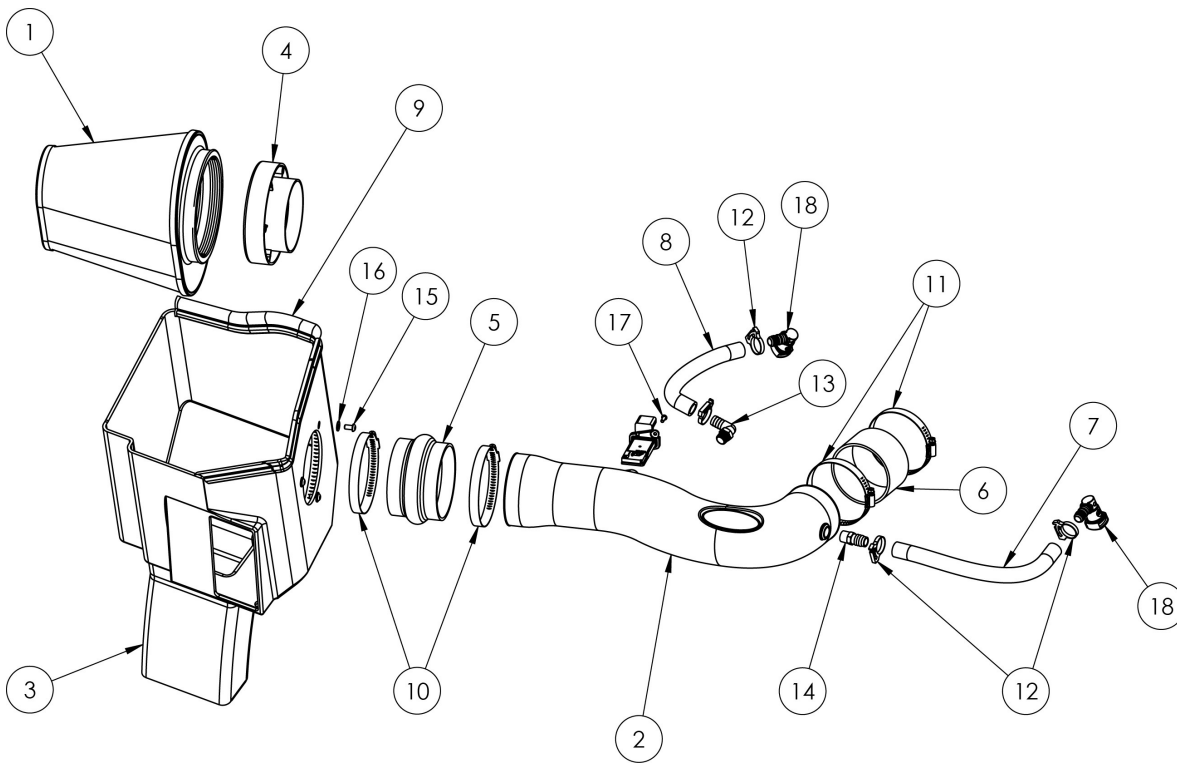
For Part Numbers :

- 200-285 720-472 Airaid Oiled Media Filter
- 201-285 721-472 SynthaMax Dry Media Filter - Red
- 202-285 722-472 SynthaMax Dry Media Filter - Black
- 203-285 723-472 SynthaMax Dry Media Filter - Blue

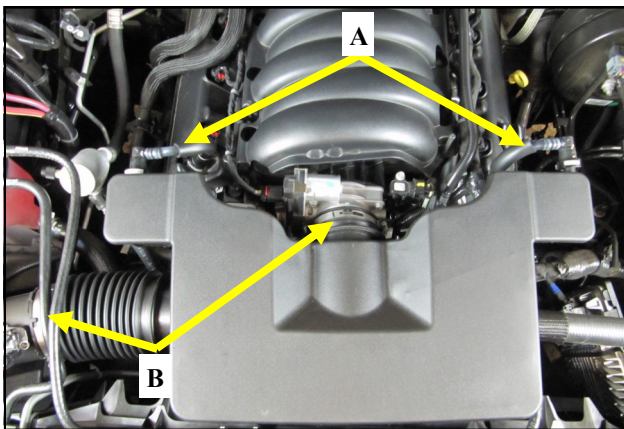
- 2014-15 Chevrolet Silverado 1500/ GMC Sierra
- 2015 Chevrolet Tahoe/ GMC Yukon
- 2015 Chevrolet Suburban 1500
- 5.3L V8

### Component Identification

1.	Airaid Premium Filter	1
2.	Airaid Intake Tube	1
3.	Cold Air Box	1
4.	Filter Adapter	1
5.	Silicone Hump Hose	1
6.	Silicone Coupler	1
7.	5/8" x 12" Breather Hose	1
	5/8" x 9.5" Breather Hose	1
	Weather strip 25 1/2"	1
10.	#68 Hose Clamp	2
11.	#56 Hose Clamp	2
12.	#19 Speed Clamp	4
13.	3/8" NPT x 5/8" Barb Elbow	1
14.	3/8" NPT x 5/8" Barb Fitting	1
15.	1/4-20 x 1/2" Button Head Screw	3
16.	1/4" Flat Washer	3
17.	#8-32 x 1/2" Button Head Screw	2
18.	Quick Connect Fitting	2
19.	Airaid Decal	2



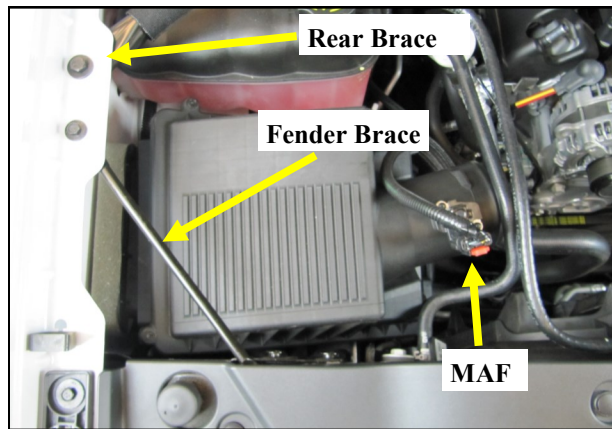
Full color instructions can be viewed on our web site at [Airaid.com](http://Airaid.com).



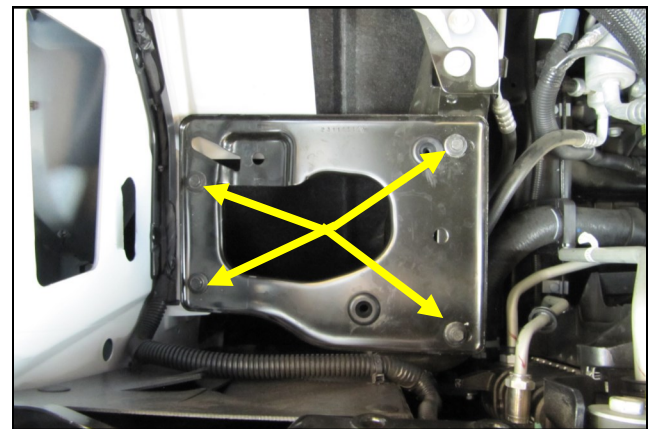
#### 1. Disconnect The Negative Battery Terminal!

**A.** Depress the Grey locking tabs in the PCV breather quick connect fittings and remove them from the vehicle.

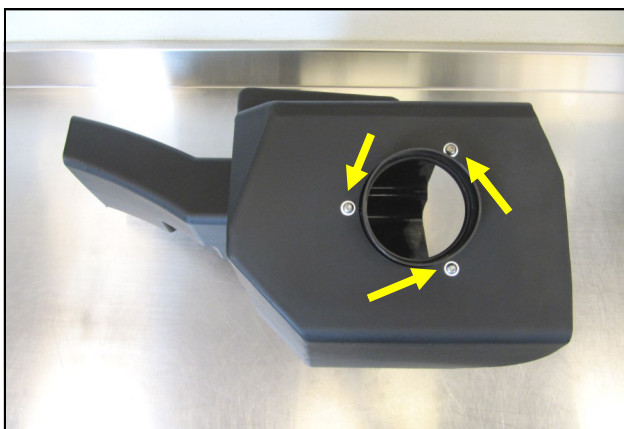
**B.** Loosen the clamps on the factory intake assembly and remove it from the vehicle.



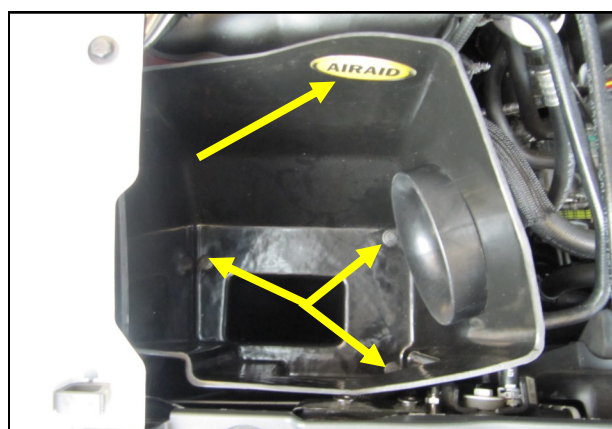
**2.** Using an open end wrench, remove the passenger side fender brace and set it aside. For ease of installation, remove the rear brace bolt and set it aside. Unplug the Mass Air Flow sensor, or MAF and un anchor it from the airbox. Unseat the airbox from it's mounting grommets and remove the factory airbox.



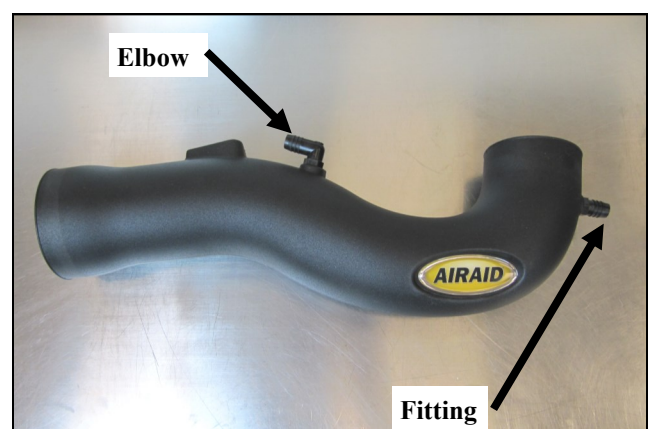
**3.** Remove the 4 bolts in the airbox mounting tray and set them aside. They will be reused in step 5. Remove the Tray, it will not be re used.



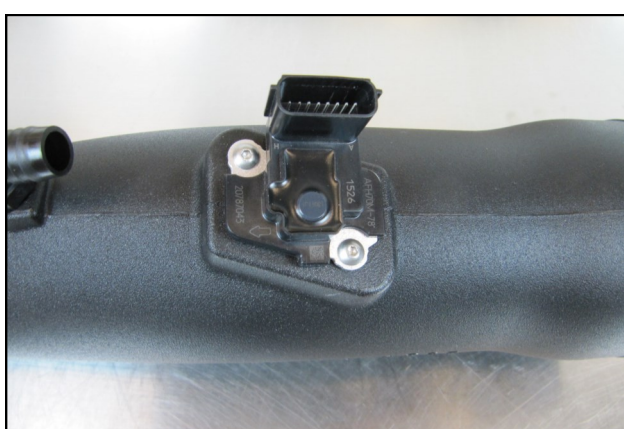
**4.** Install the Filter Adapter onto the Cold Air Box as shown using the three 1/4-20 Button Head Screws (#15) and 1/4" Flat Washers (#16).



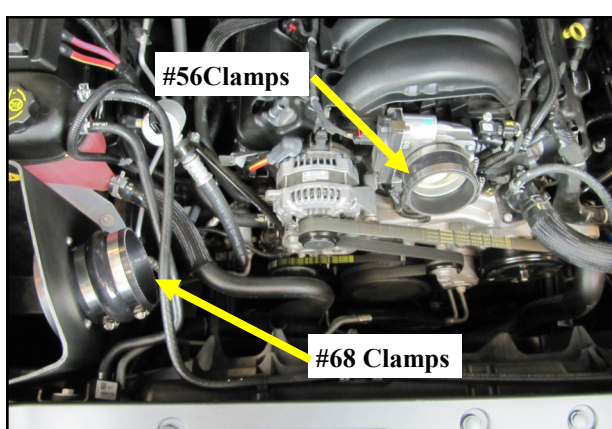
**5.** Slide the Airbox assembly into the inner fender area and secure it using 3 of the OEM bolts removed in step 3. Apply the Airaid Decal inside of the Airbox as shown.



**6.** Install the Barbed Fitting and Elbow (#s 13 and 14) into the Airaid Intake Tube. Apply the Airaid Decal onto the Tube as shown.



**7.** Transfer the Mass Air Flow sensor from the factory airbox into the Airaid Intake Tube. Secure the sensor using the two 8-32 Button Head Screws (#17).



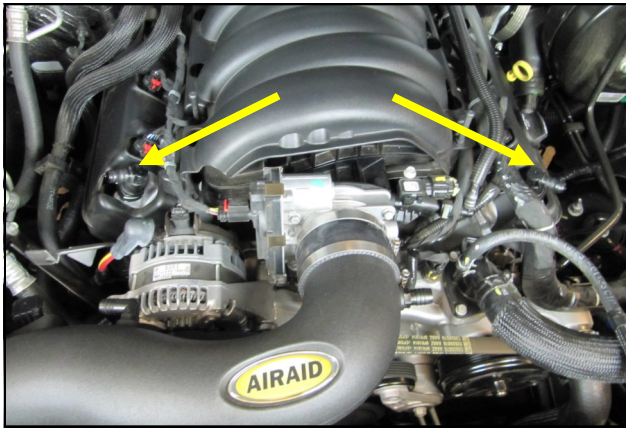
**8.** Slide the Hump Hose with the #68 Hose Clamps onto the Filter adapter and the coupler and the #56 Clamps onto the throttle body. Leave the clamps loose for now.



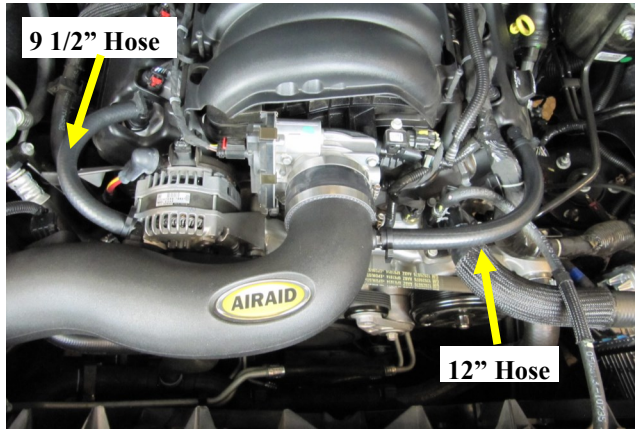
**9.** Install the Airaid Intake Tube into the Hump Hose and couplers. Adjust for fit and tighten all four Hose Clamps.

**Do Not Use Factory Hardware !**

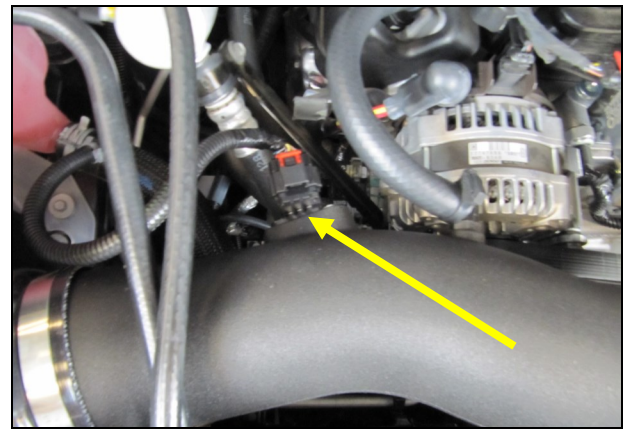




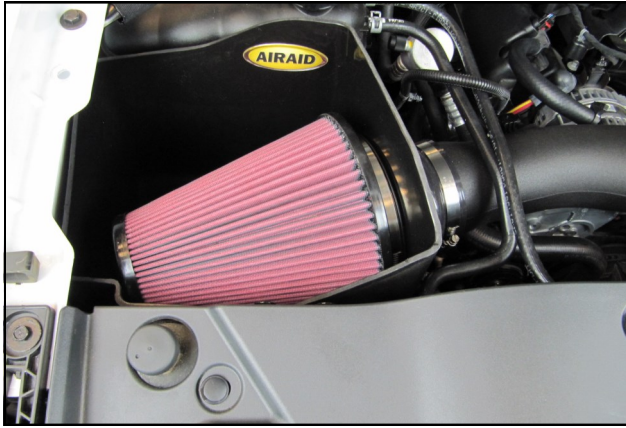
10. Install the supplied Quick Connect Fittings on to the valve cover breather fittings.



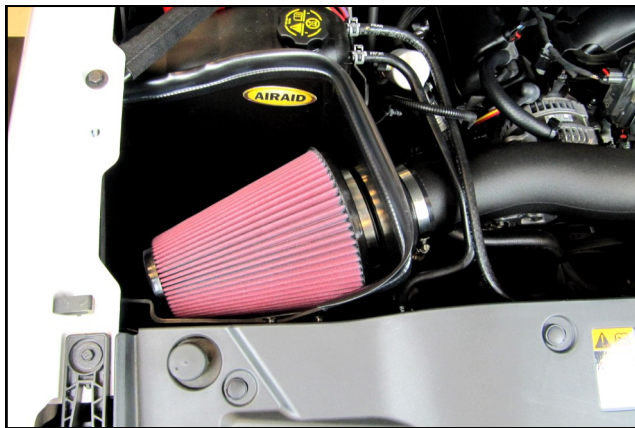
11. Connect the Barbed Fittings on the Intake tube to the Quick Connect Fittings on the Valve covers using the 5/8 Breather hoses. The 9 1/2" Hose is to be used on the Passenger side and the 12" Hose is to be on the Drivers side.



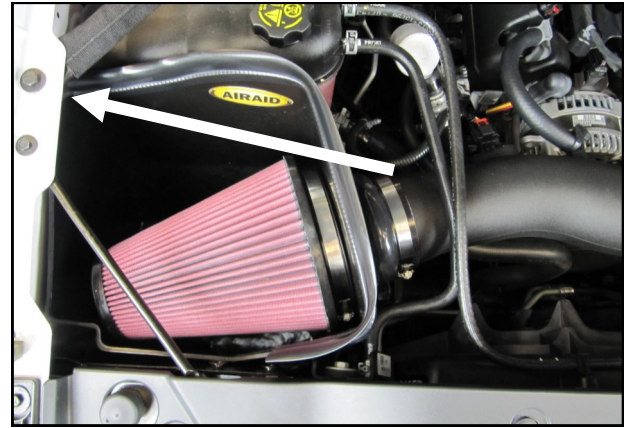
12. Reconnect the Mass Air Flow sensor.



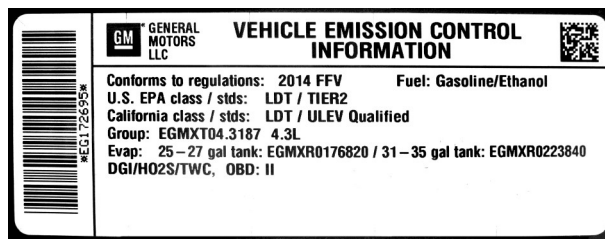
13. Install the Airaid Premium filter onto the Filter Adapter, and tighten the hose clamp.



14. Install the Weather Strip onto the top edge of the Cold Air Box with the contour rolling away from the filter.



15. Reinstall the fender brace and the rear brace bolt. Make sure all clamps, hoses, bolts, and screws are tight. Double check the hood clearance. Reconnect the negative battery cable. The CARB Decal included with this kit must be placed in a conspicuous location under the hood in order to pass a Smog check.



**WARNING!** If your vehicle has a Vehicle Emission Control Information decal affixed to the factory airbox, a new replacement label must be obtained and installed in a readily visible position in the engine compartment in order to remain CARB compliant. Failure to do so will prevent the vehicle from passing a smog check. Replacement labels can be ordered from your local dealership. Regulations state that the VECI label shall not be affixed to any equipment which is easily detached from the vehicle. Label placement, under the hood on a painted surface is recommended.

Thank you for purchasing the Airaid Intake System. Contact Airaid @ (800) 498-6951 8:00 AM - 5:00 PM MST weekdays for questions regarding fit or instructions that are not clear to you. Your Airaid Intake System was carefully inspected and packaged. Check that no parts are missing, or were damaged during shipping. If any parts are missing, contact Airaid. The air filter element is protected from direct exposure to water and debris; care should be taken not to drive through deep water. WATER INGESTION IS THE DRIVERS RESPONSIBILITY! The air filter is reusable and should be cleaned periodically.

## FILTER IDENTIFICATION

720-472 Airaid Oiled Media  
722-472 Airaid SynthaMax Dry Media - Black

721-472 Airaid SynthaMax Dry Media - Red  
723-472 Airaid SynthaMax Dry Media - Blue

For your Oiled media filter we suggest using the AIRAID Filter Tune-Up Kit!



P/N 790-551 Aerosol Spray  
P/N 790-550 Squeeze Spray



*SynthaMax*

**Do Not Oil**

Synthamax Air Filters do not require oil. Service air filter as needed by cleaning with common non-petroleum all-purpose household cleaner and water. Simple Green®, Formula 409® or equivalent works great. Apply cleaner to outside of air filter and allow to soak. Then flush filter clean from the inside out with a garden hose and repeat steps if necessary. Do not apply high pressure water or air to clean filter. Allow filter to air dry and reinstall.