





Assembly overview.....	2-3
1. Frame inspection.....	4
2. Headset installation.....	5
3. Cable housing installation.....	6-7
4. Seatpost installation.....	8
5. Saddle adjustment.....	9-10
6. Derailleur hanger adjustment.....	11
7. Parts listing.....	12-14

*For the warranty to be valid, the bicycle must be fully assembled by an authorized Argon 18 dealer. High-end components, particularly carbon parts, need extra care when assembled. Those components must be installed using a calibrated torque wrench to make sure every bolt is at the right torque setting to prevent damage.*



**1. Frame inspection**



**2. Headset installation**



**3. Cable housing installation**

IMPORTANT NOTICE: It is easier to install the cables and cable housings before the bearings.



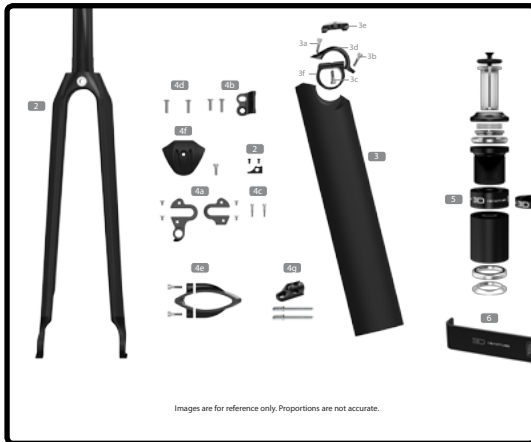
**4. Seatpost installation**



**5. Saddle adjustment**



**6. Derailleur hanger adjustment**



## 7. Parts listing

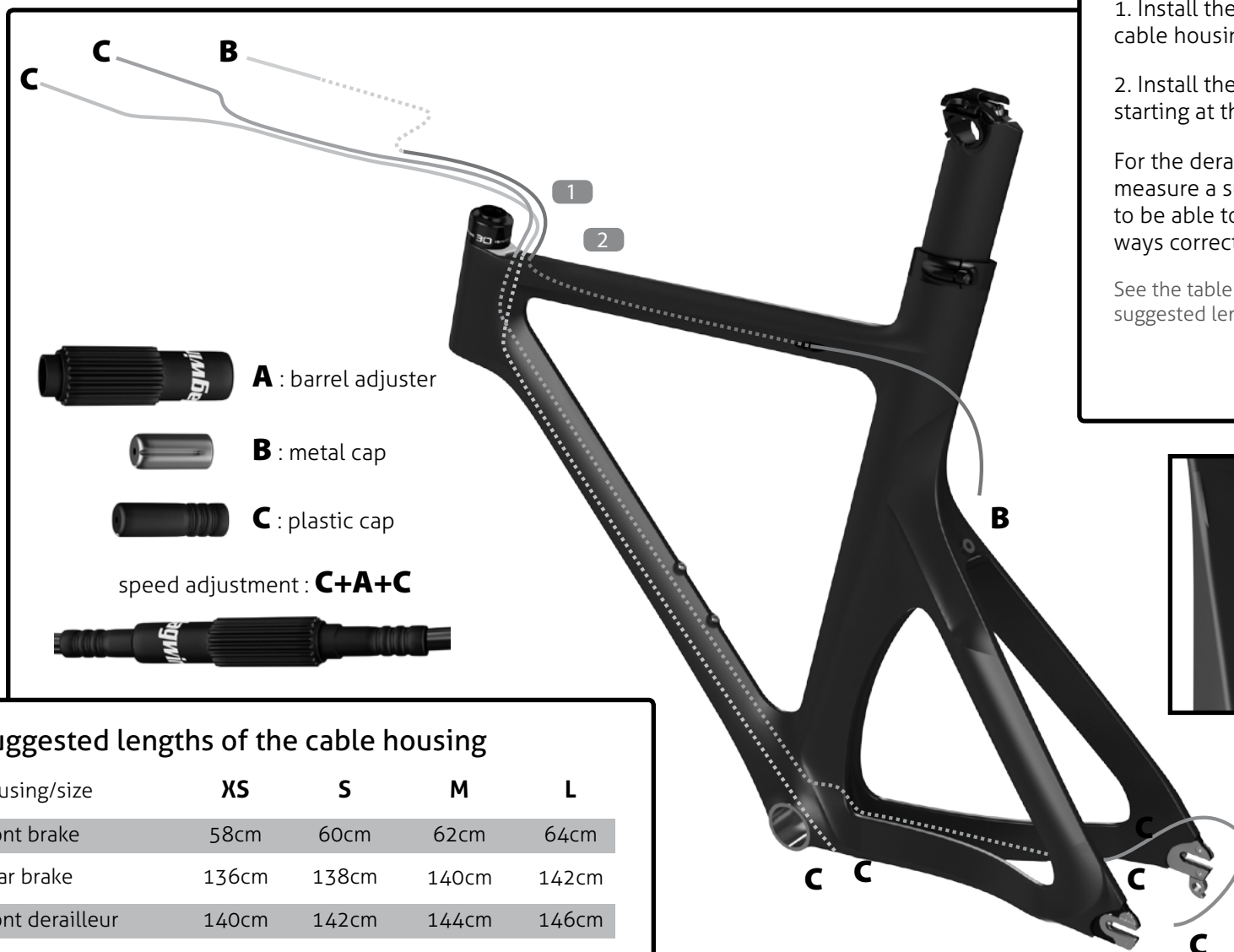


**When assembling a new frame, be sure to check if the following parts are assembled correctly.**

Parts installed on the frame Description			Screw type	Torque Nm	Detail
1	Front derailleur hanger	Screw (2)	3mm	4Nm	Loctite
2	Rear derailleur hanger	Screw (4)	3mm	4Nm	Loctite
3	Bottle cage	Screw (2)	4mm	3Nm	Grease
4	Bottom bracket cover	Screw (1)	5mm	2Nm	Grease



Install the 3D headset (9) according to the pressfit assembly guide. You can choose from 3 different heights : 25mm, 15mm or 0mm.

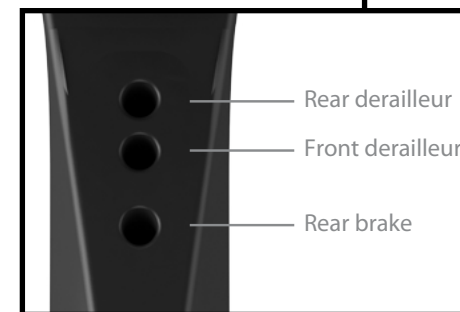


1. Install the front and rear derailleur cable housing starting at the head tube.

2. Install the rear brake cable housing starting at the head tube.

For the derailleur and brake housing, measure a sufficient length of housing to be able to turn the handlebar both ways correctly.

See the table below for the cable housing suggested length.



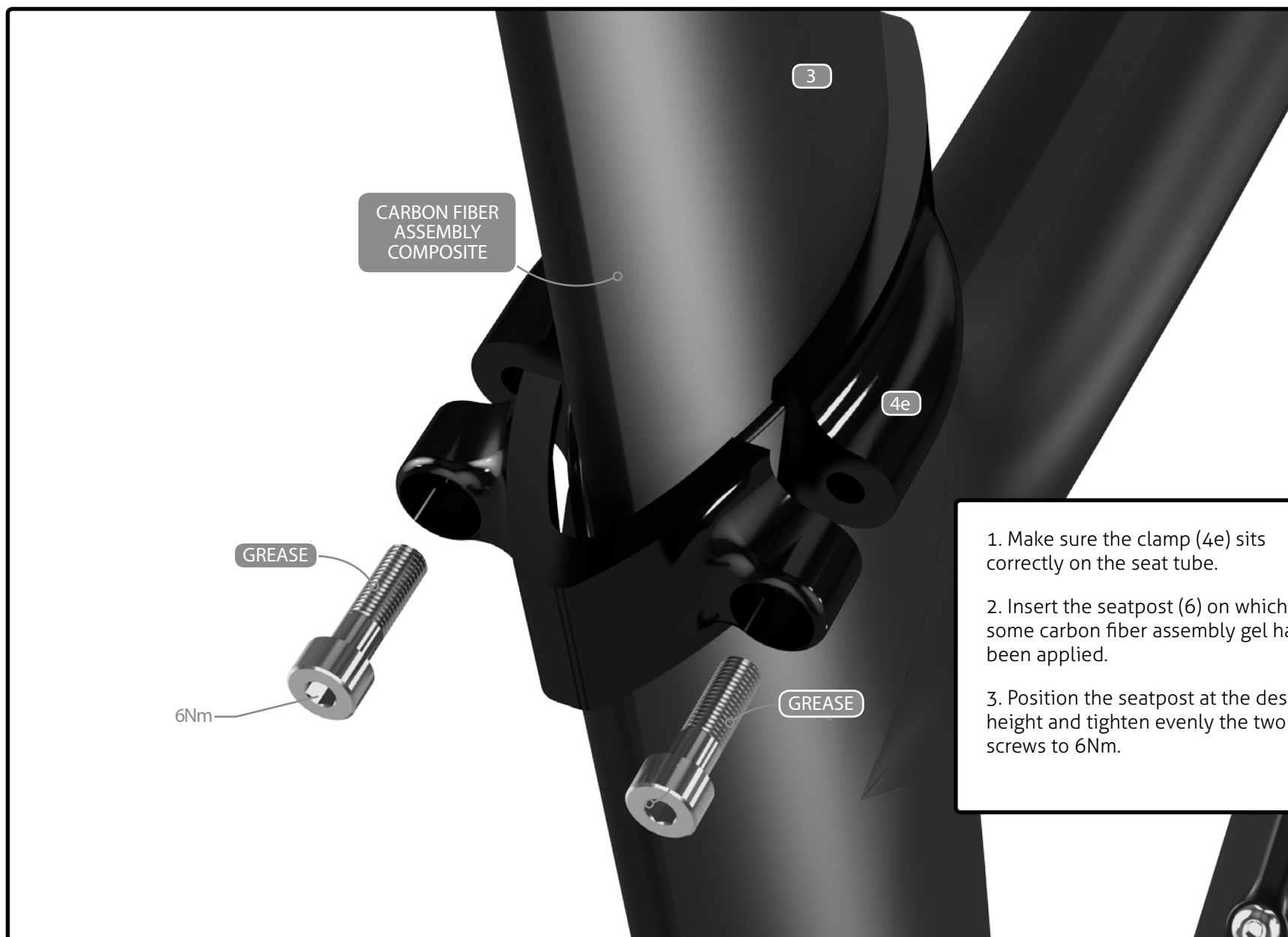
### Suggested lengths of the cable housing

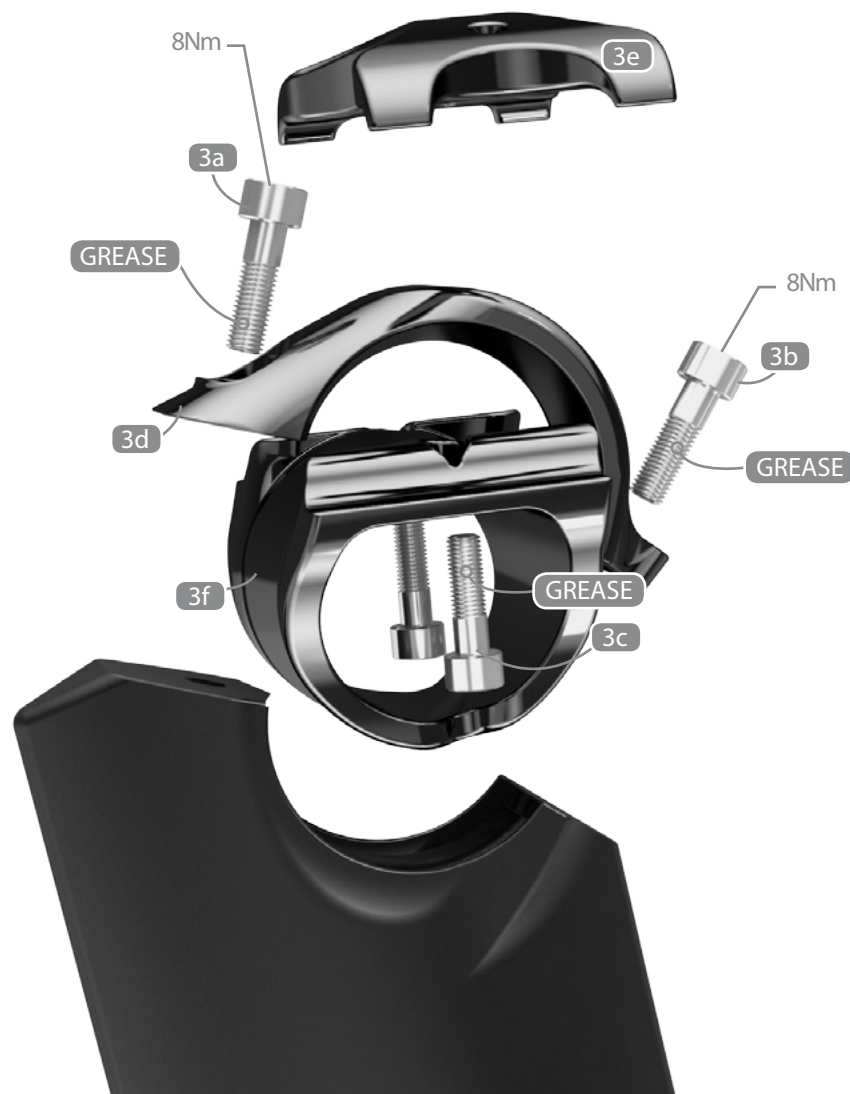
housing/size	XS	S	M	L
Front brake	58cm	60cm	62cm	64cm
Rear brake	136cm	138cm	140cm	142cm
Front derailleur	140cm	142cm	144cm	146cm
Rear derailleur	140cm	142cm	144cm	146cm
Rear derailleur (rear section)	40cm	40cm	40cm	40cm



Remove the cable guide and add a plastic cap on each cable housing (front and rear derailleur). Insert the plastic cap into the cable guide, then fix the guide to the frame with the M5 screw.







1. Install the saddle on the rocker (3f) and slightly tighten the rail clamp (3e) using a ball end hex key.

2. Tighten the upper screw of the rocker clamp (3a) by keeping a space of 2 to 3mm between the aluminum and carbon parts.

3. Adjust the angle of the saddle and tighten the lower bolt of the rocker clamp (3b).

4. Adjust the saddle offset and finalize the tightening of the rail clamp (3c).





The 2waypost ASP-4000 can be flipped to achieve a triathlon or a road position (75°/78°).

The seat clamp offset can be set by flipping the rail clamp (3d) and the rocker (3f).

Road : -10mm to -15mm

Tri : +10mm to 15mm



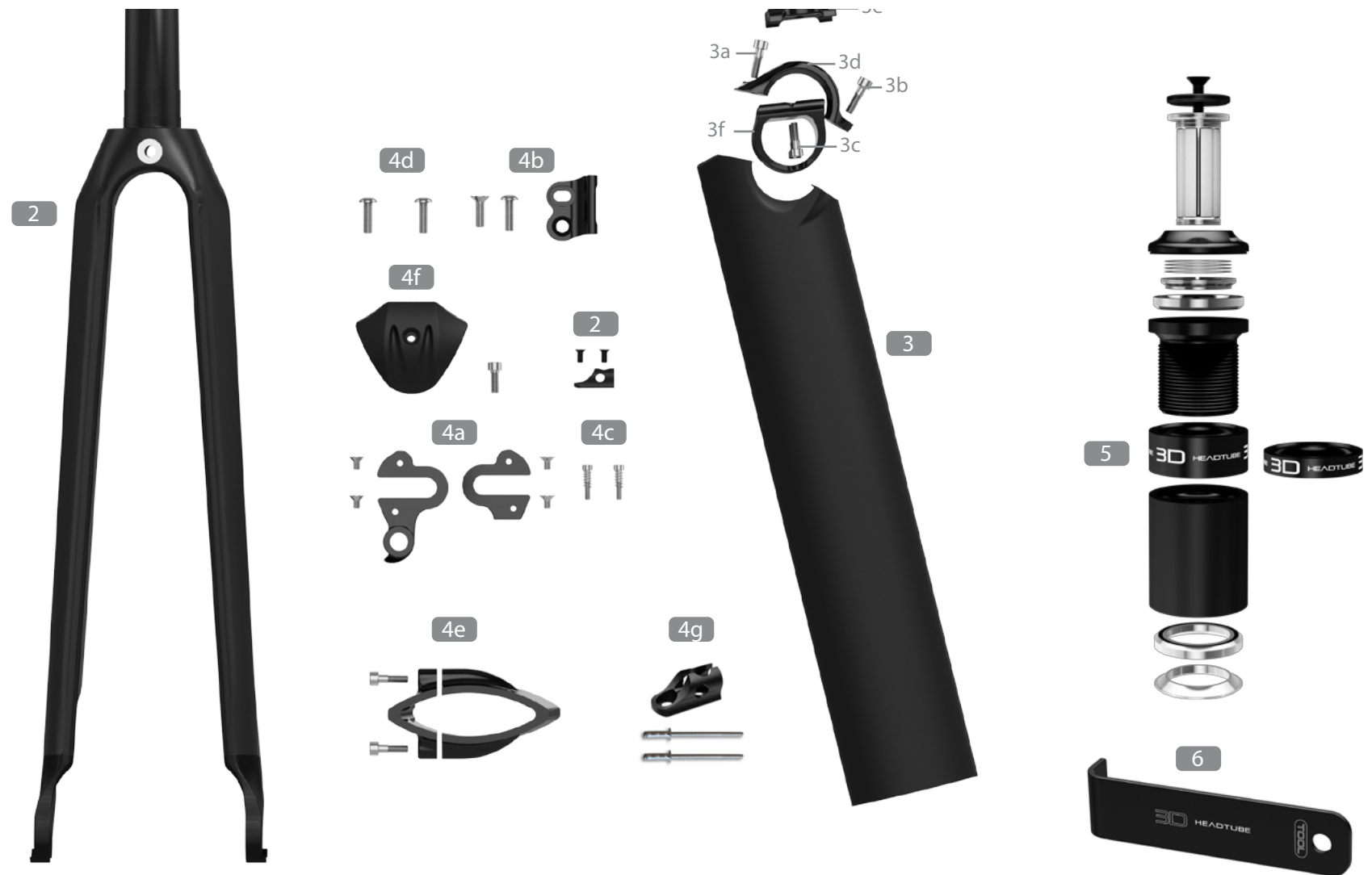


The front derailleur hanger can be adjusted according to the front derailleur angle to obtain an equal curve between the derailleur and the big chain ring. Once at the right angle, use blue 242 Loctite and screw in at 6Nm.

LOCTITE

4b

LOCTITE



Images are for reference only. Proportions are not accurate.



No.	Name	A18 SKU#	Qty
<b># Frameset Parts</b>			
1	E-112 frame		
2	E-112 fork		1
<b># Seat post with the following parts assembled</b>			
3	E-112 seat post (ASP-4000)		1
3a	• Upper HexSocket screw (M6*20mm S) for rocker clamp		1
3b	• Lower HexSocket screw (M6*20mm S) for rocker clamp		1
3c	• HexSocket screws (M5*20mm S)		2
3d	• Top rail clamp		1
3e	• Rocker clamp		1
3f	• Rocker		1
<b># Parts installed on the frame</b>			
4a	Rear derailleur hanger with screws M4x7mmF - Model F	37831	1 set
4b	Front derailleur hanger with screws M5x16mmB & M5x16mmF - Model D	36197	1
4c	Rear axel adjustment round head Phillips screws M3x20mm and springs	37834	2
4d	Screw for water bottle cage M5x16mmB	38234	2
4e	Seat clamp alloy polish black with screws M5x20mmS	37834	1
4f	Plastic BB cable guide with screw M5x12mmS and nut M5x19mm	36194	1
4g	FD cable guide with rivets	36659	1
<b># Also included with the frameset - shipped separately</b>			
5	Headset No. IS-2 6.5 + 3D with compressor TH-881-1	37859	1
6	3D headset tool	36165	1