

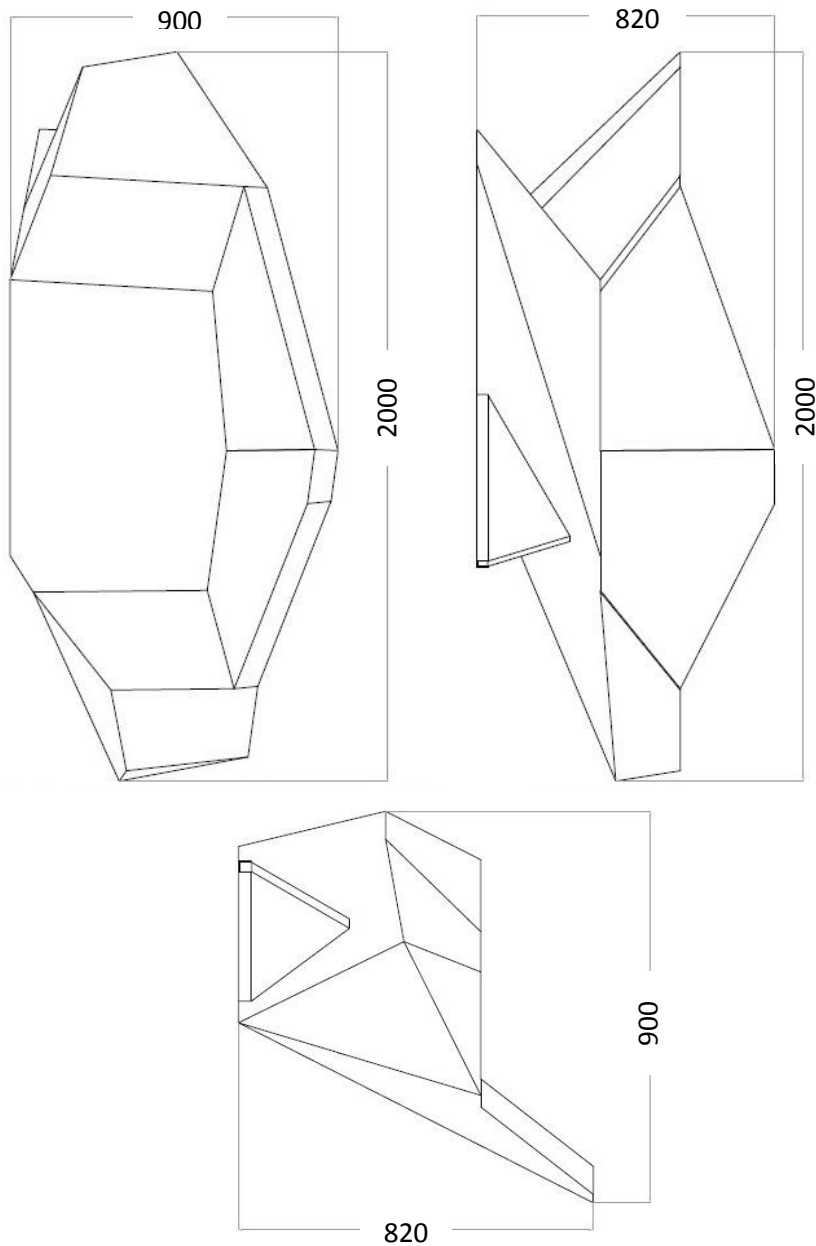
ENRICO MARONE CINZANO
FURNITURE

ARMCHAIR

ARMCHAIR



ARMCHAIR



- MEASUREMENTS, IN CM: W 200 X H 82 X D 90
- PINUS CEMBRA
- OXIDIZED STEEL
- RECYCLED GLASS
- 100% GOOSE DOWN FILLER
- SLIPCOVER IN NATURAL HEMP
- ISINGLASS (A NATURAL GLUE DERIVED FROM WASTE MATERIAL FROM THE FOOD INDUSTRY)
- WEIGHT 70 KG

ARMCHAIR



CIRMOLO, ANCIENT PINUS CEMBRA

- WOOD ORIGINALLY HARVESTED FROM THE VARAITA VALLEY, PIEDMONT, ITALY
- PLANKS RECOVERED FROM DISMANTLED MOUNTAIN CHALET'S ORIGINALLY BUILT IN THE 18TH CENTURY
- DOES NOT REQUIRE SPECIAL FINISHES BUT CAN BE TREATED WITH NATURAL BEESWAX
- THE WOOD WAS TREATED TO CONFORM TO INTERNATIONAL SHIPPING REQUIREMENTS TO REMOVE ALL MICROORGANISMS



LINSEED OIL

- PERMEABLE AND PROTECTIVE
- DERIVED FROM 100% COLD-PRESSED FLAXSEED

ARMCHAIR



25 MM GLASS

- SOURCED AND MANUFACTURED IN CUNEO, PIEDMONT, ITALY
- 7% RECYCLED CONTENT
- COMPLIES WITH NATIONAL POLICIES AND REGULATIONS RELATING TO ENERGY SAVINGS AND CO2 EMISSIONS
- CRADLE-TO-CRADLE CERTIFIED
- INERT MATERIAL, NOT SUBJECT TO HARMFUL EMISSIONS
- RECYCLED, RECYCLABLE, MONOMATERIAL



NATURAL GLUE

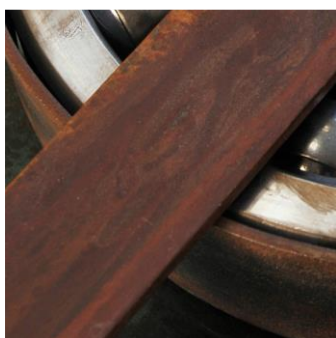
- HOMEMADE NATURAL GLUE DERIVED FROM FOOD INDUSTRY BY-PRODUCTS
- NONTOXIC

ARMCHAIR



HEMP FABRIC

- LOCALLY GROWN HEMP FROM THE VALLEYS OF PIEDMONT, ITALY
- 100% NATURAL PRODUCT
- HAND-LOOMED
- NONTOXIC
- NOT SUBMITTED TO CHEMICAL TREATMENTS
- RECYCLABLE, BIODEGRADABLE



OXIDIZED STEEL

- LOCALLY SOURCED
- HANDCRAFTED IN TURIN, ITALY
- SUPERFICIALLY TREATED WITH A WATER-BASED SOLUTION OF VINEGAR AND SODIUM CHLORIDE (UNREFINED COARSE SALT)
- RECOVERED, RECYCLABLE, MONOMATERIAL

AESTHETIC

CRAFTED

CONSCIOUS