

ENRICO MARONE CINZANO
FURNITURE

DONDOLO

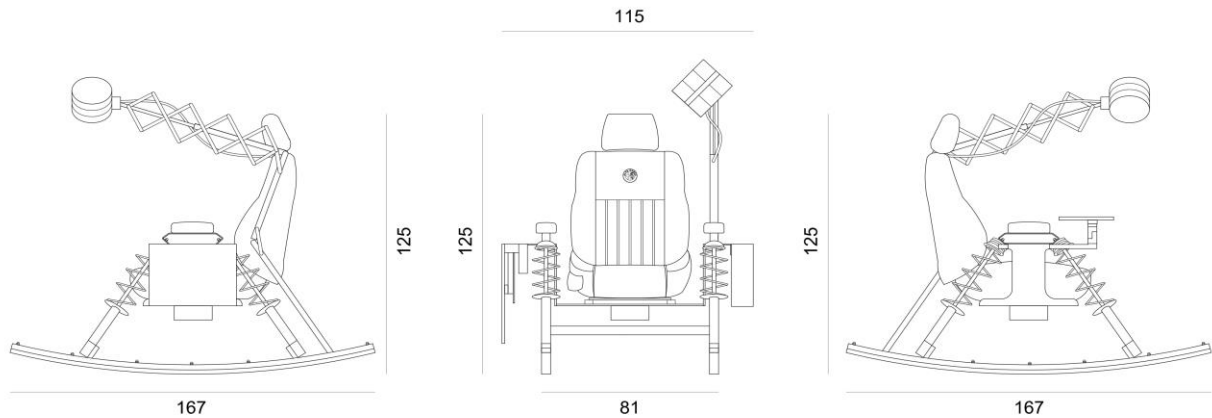
DONDOLO



DONDOLO

Considering I come from Torino, the car manufacturing capital, it only made sense that at some point I would extend my work to the automobile industry. I went scavenging through car junk yards and found that the aftermath of that industry produced a wealth of beautiful and extremely well made products which could be re-utilized into making furniture, hence the birth of 'Dondolo'. It's a rocking chair with a foot in the past and one in the future. Still benefitting from the factory-issue moving parts, the original leather Alfa Romeo 166 seat reclines and heats at will, powered by an eco-friendly gel based battery which can be charged with any power outlet. By means of two periscopic arms, it has the added comfort of providing a swinging, retractable work table to rest your laptop, and an efficient dimmable warm-toned LED light, housed in what was a beautiful metal FIAT 500 vintage headlight. I am adding an extra layer to the proverbial cake, by lining the bottom of the retractable table with a EMF and radiation protective fabric, which will mitigate the damage one incurs from using a computer at such proximity to the body. Lastly, for some finishing touches and to replace the molded plastic parts, I used hand embossed recovered leather from the furniture industry, replicating the pattern of car tyre marks, which look almost like natural crocodile patterns. Everything was sourced and made in Turin itself. A complex project but one that made alot of sense: back to my roots.

DONDOLO



- MEASUREMENTS, IN CM: W 167 X H 125 X D 81
- RECYCLED CAR PARTS
- STAINLESS STEEL STRUCTURE
- RECYCLED LEATHER
- RECOVERED MAHOGANY WOOD
- POWERED BY RECHARGEABLE GEL BATTERY
- SHIELDING FILM
- WEIGHT: 95 KG
- PRODUCTION YEAR: 2016

DONDOLO



RECYCLED CAR PARTS

- Locally sourced
- Shock absorbers
- Alfa Romeo 166 leather seat
- Fiat 500 headlight



RECYCLED LEATHER

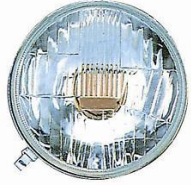
- Locally sourced
- Hand-embossed
- Recovered from furniture industry leftovers
- Not submitted to chemical treatments



STAINLESS STEEL

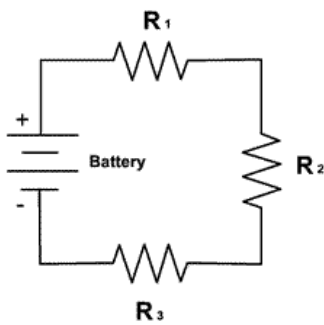
- Locally sourced
- Brushed finish
- Maintenance-free

DONDOLO



LIGHT

- Dimmable LED bulb
- 4 Watt - 200 Lumen output
- 3000K light colour
- 20.000 hrs lifetime



ELECTRIC SYSTEM

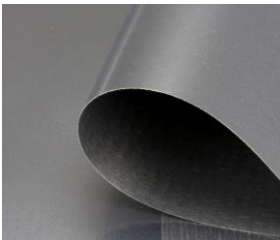
- Dc circuit powered by 12-volt gel battery
- Full electric movement control
- 12-Volt, 3.3 Amp battery charger
- Do not tamper with the original operating system

DONDOLO



GEL BATTERY

- 12 Volt, 22 Amp / hour
- Always fully charge the battery
- Do not open
- Avoid hot and cold extreme when charging
- Air-transport approved
- Replace with the same specifications product
- Complete battery specifications on [MK-Powered website](#)
- Charging system manual on [Ctek.com](#)



SHIELDING FILM

- Yshield MCL61 magnetic shielding film
- Made from an amorphous cobalt alloy
- Up to 30 Db attenuation of the LF magnetic fields
- Up to 75 Db attenuation of LF and HF electric fields

AESTHETIC

CRAFTED

CONSCIOUS