

SR 101 CROSSING AT PAMF HOSPITAL IMPROVEMENTS

PROJECT BACKGROUND

Two State Route 101 (SR 101) water main crossings exist in Zone 1 including a 500 LF 12" asbestos cement crossing between Karen Road and Sem Lane and another 12" PVC crossing a half mile to the north. The 12" AC was installed in 1963 in a 36" steel casing. As part of the PAMF development agreement at the south end of Zone 1, the District obtained a 15 ft easement along the northeast side of the PAMF property in addition to a 40 ft x 40 ft area in the northeast corner to serve as a staging area for an alternate SR 101 crossing. This project abandons the aging 12" AC crossing and relocates it to the PAMF easement with a new 1,100 LF 12" polyvinylchloride (PVC) water main. To loop the water main back to the existing water main on Shoreway Road requires the installation of an additional 1,200 LF 8" PVC. Hydraulic analysis indicates increased fire flows along Shoreway Road of approximately 200 gpm. This project will require extensive Caltrans coordination. Distribution System Analysis No. 077

PROPOSED IMPROVEMENTS

Install 1,100 LF of 12" PVC in steel casing and 1,200 LF of 8" PVC
Abandon 500 LF 12" AC
Install 2 fire hydrant assemblies, new intertie
Cathodic protection of all metallic fittings/materials

PROJECT BENEFITS

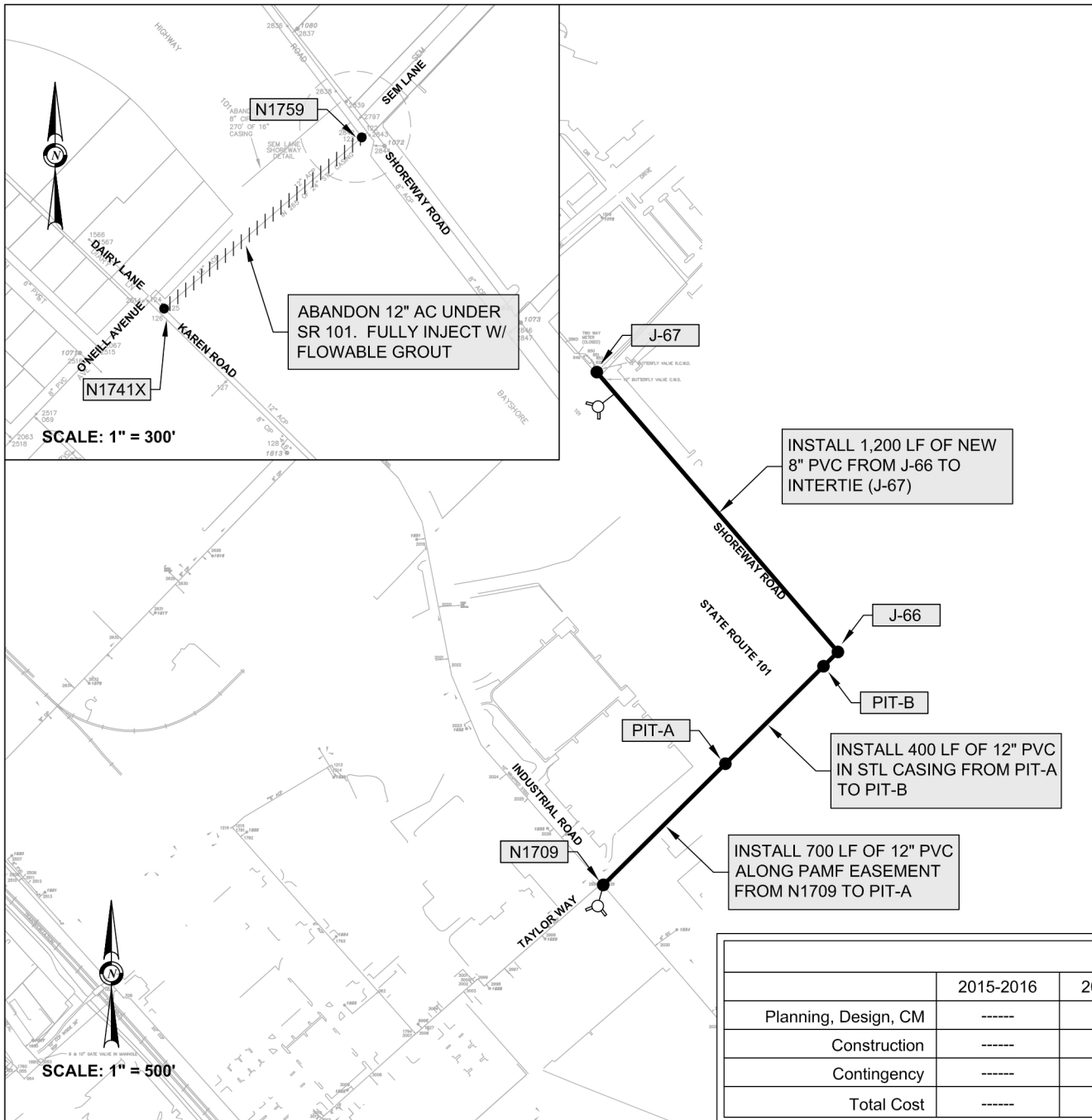
The SR 101 Crossing at PAMF Hospital Improvements replaces an old and aging water main capable of causing major disruptions on SR 101 in the event of a main break, eliminates a dead end, creates a looped system, improves fire flows, and constructs a serviceable underground inter-tie utility vault.

PROJECT BUDGET

700 LF - 12" PVC @ \$300/LF	\$ 210,000
400 LF - 12" PVC SR 101 @ \$1,000/LF	\$ 400,000
1,200 LF - 8" PVC @ \$250/LF	\$ 300,000
Abandon 12" - AC Crossing @ \$100,000/LS	\$ 100,000
2 Fire Hydrants @ \$15,000/EA	\$ 30,000
Subtotal Construction	\$ 1,040,000
Planning, Design, & Construction Support	\$ 350,000
Contingency (±20%)	\$ 280,000
Project Budget	\$ 1,670,000

EXPENDITURE SCHEDULE (2015 DOLLARS)

	2015-2016	2016-2017	2017-2018	2018-2019	2019-2020	Future
Planning, Design, CM	-----	-----	-----	-----	-----	-----
Construction	-----	-----	-----	-----	-----	-----
Contingency	-----	-----	-----	-----	-----	-----
Total Cost	-----	-----	-----	-----	-----	-----



Pakpour Consulting Group, Inc.
5776 Stoneridge Mall Road, Suite 320
Pleasanton, CA 94588
925.224.7717 Fax 925.224.7726
www.pcgengr.com

JOB No. 10012.07
DATE 05/28/15
SCALE AS NOTED
DRAWN: BY BL
CKD JP



MID-PENINSULA WATER DISTRICT
SAN MATEO COUNTY, CALIFORNIA
3 DAIRY LANE
BELMONT, CA 94002

CAPITAL IMPROVEMENT PROGRAM - 2015 UPDATE
SR 101 CROSSING AT PAMF HOSPITAL IMPROVEMENTS
PROJECT 15-72

SHEET X

OF X