



City of San Rafael Station No. 57 Project

February 2018
Issue 7

Executive Summary

In November 2013, Measure E was passed by the voters of San Rafael extending for 20 years an existing 0.5% sales tax and adding 0.25% in an effort to set aside funds to begin to address the aging public safety facilities in San Rafael. In July 2015 the City Council approved a strategic plan for essential public safety facilities which updated the 2003 facility condition assessments, developed space needs of essential facilities, feasibility studies of improving existing and new public safety facilities, developed project budgets and funding plan, prioritized projects, and developed a phasing and implementation schedule. The plan recommended seven projects including a new public safety center housing both the police and fire departments as well as the rebuilding of Fire Station 51, 52 and 57. In addition, the plan recommended upgrades to the other fire stations for seismic safety and operational improvements. In late 2015, architect and construction management team began the design process for the Phase 1 projects, which included Fire Station 51, 52, 57 and the Public Safety Center. **This report provides a current update on the progress of Fire Station 57 located on Civic Center Drive.**

Project Description/Scope

The new 9,855 square foot, two-story fire station, will remain located at 3530 Civic Center Drive in San Rafael, California, and will house five on-duty fire fighters/paramedics. The new station is designed to accommodate six on-duty personnel should additional staffing be required to better serve the community. The core elements of the new station include three drive-through apparatus bays, apparatus support spaces, public lobby, accessible restroom, office, kitchen, dining, dayroom, laundry room, private sleeping quarters, unisex restrooms, mechanical, electrical, communications rooms and staff parking. Other notable site/adjacent improvements include access aprons and sidewalk replacement along Civic Center Drive, median(s) in front of the station on Civic Center Drive will be modified to align with the new apparatus bay location, a "keep clear" zone will be striped in front of the apparatus bay apron on Civic Center Drive. Prior to the commencement of demolition activity, and in order to maintain uninterrupted service to the community, personnel and equipment from Fire Station 57 were relocated to Fire Station 53 at 30 Joseph Court, San Rafael, California. Modest modifications to Fire Station 53 were implemented as part of the relocation effort.

PROJECT TEAM:

Owner: City of San Rafael

Project/Construction Manager: Kitchell, Sacramento, CA

Architect: Mary McGrath Architects, Oakland, CA

Contractor – Alten Construction, Inc.

For more information on the San Rafael Essential Facilities, projects please visit
<https://www.cityofsanrafael.org/departments/facilities>

Project Progress

During the month of February, Alten Construction completed form work installation, rebar installation, and concrete pours for the new building foundation. Work on the site-specific drainage and manhole system began. The installation of pipe/conduit for underground utilities (with the new building foot print) was completed. The placement of underground MEP elements continued, while slab on grade work got underway. The review and processing of submittals and Request for Information (RFI's) continued at high volume/pace.



January progress pictures for Fire Station 57

Project Activities this Month

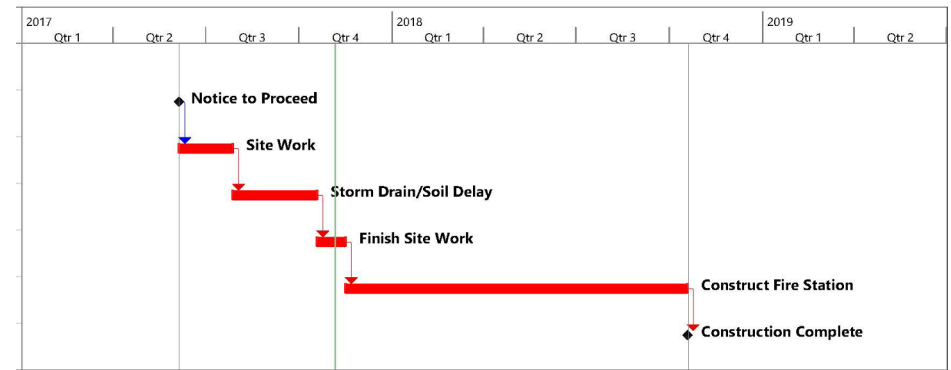
- ▶ Completion of form work, rebar, and foundation pours
- ▶ Commence new site-specific drainage and manholes
- ▶ Completion of pipe/conduit installation for underground utilities within building foot print
- ▶ Continued installation of underground MEP elements for new building (including deep interior MEP)
- ▶ Commencement of slab on grade

Anticipated March Activities

- ▶ Commencement of CMU placement at slab perimeter and interior walls (to slab elevation)
- ▶ Complete installation of underground MEP elements for new building (including deep interior MEP)
- ▶ Install under slab rock and vapor barrier
- ▶ Install Apparatus Bay trough drains
- ▶ Substantial completion of slab on grade
- ▶ Mobilize material for remainder of CMU placement (above slab elevation)



Project Schedule Information



Project Budget Information

	Budgeted/Bid Costs	Expensed to Date
Construction Hard Costs	\$9,719,465	\$1,631,161
Project Soft Costs	\$2,462,135	\$1,605,777
Total Project Costs	\$12,181,600	\$3,236,938

(*) cost data based on previous report projections which exceeded the period GL. Next month's report will show alignment with the GL Actual Cost.