

PROJECT TEAM:

Owner: City of San Rafael

Project/Construction Manager: Kitchell, Sacramento, CA

Architect: Mary McGrath Architects, Oakland, CA

Contractor – Alten Construction, Inc.

For more information on the San Rafael Essential Facilities, projects please visit

<https://www.cityofsanrafael.org/departments/facilities>



prepared by
KITCHELL

City of San Rafael Station No. 57 Project

June 2018
Issue 11

Executive Summary

In November 2013, Measure E was passed by the voters of San Rafael extending for 20 years an existing 0.5% sales tax and adding 0.25% in an effort to set aside funds to begin to address the aging public safety facilities in San Rafael. In July 2015 the City Council approved a strategic plan for essential public safety facilities which updated the 2003 facility condition assessments, developed space needs of essential facilities, feasibility studies of improving existing and new public safety facilities, developed project budgets and funding plan, prioritized projects, and developed a phasing and implementation schedule. The plan recommended seven projects including a new public safety center housing both the police and fire departments as well as the rebuilding of Fire Station 51, 52 and 57. In addition, the plan recommended upgrades to the other fire stations for seismic safety and operational improvements. In late 2015, architect and construction management team began the design process for the Phase 1 projects, which included Fire Station 51, 52, 57 and the Public Safety Center.

This report provides a current update on the progress of Fire Station 57 located on Civic Center Drive.

Project Description/Scope

The new 9,855 square foot, two-story fire station, will remain located at 3530 Civic Center Drive in San Rafael, California, and will house five on-duty fire fighters/paramedics. The new station is designed to accommodate six on-duty personnel should additional staffing be required to better serve the community. The core elements of the new station include three drive-through apparatus bays, apparatus support spaces, public lobby, accessible restroom, office, kitchen, dining, dayroom, laundry room, private sleeping quarters, unisex restrooms, mechanical, electrical, communications rooms and staff parking. Other notable site/adjacent improvements include access aprons and sidewalk replacement along Civic Center Drive, median(s) in front of the station on Civic Center Drive will be modified to align with the new apparatus bay location, a "keep clear" zone will be striped in front of the apparatus bay apron on Civic Center Drive. Prior to the commencement of demolition activity, and in order to maintain uninterrupted service to the community, personnel and equipment from Fire Station 57 were relocated to Fire Station 53 at 30 Joseph Court, San Rafael, California. Modest modifications to Fire Station 53 were implemented as part of the relocation effort.

Project Progress

During the month of June, Alten Construction completed the CMU installation for the Apparatus Bay. Steel elements (in conjunction with CMU activities) were completed for the Living Quarters. Embedded MEP elements were completed and the concrete slab was poured for the Apparatus Bay and Living Quarters. Shop fabrication for remaining steel commenced. Pot holing and site investigation for the on-site storm drain system was completed.

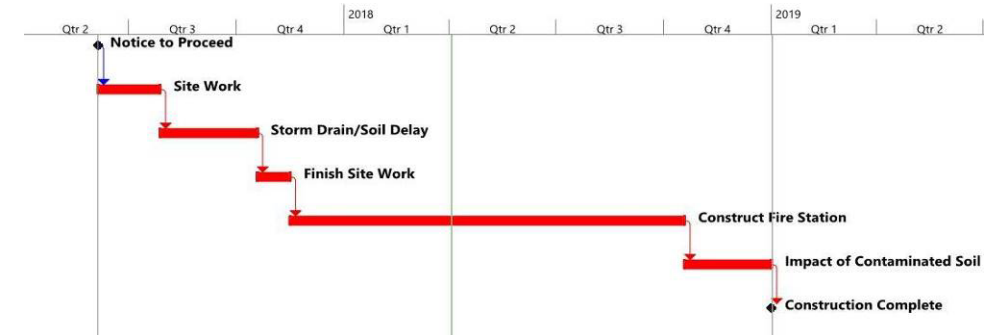


June progress pictures for Fire Station 57



June progress pictures for Fire Station 57

Project Schedule Information



Project Budget Information

FS 57	Budgeted/Bid Costs	Costs to Date
Alten Constr. Hard Cost (Incl CO 1-VE)	\$9,082,292	\$3,973,766
CO 002	\$114,464	
CO 004	\$223,071	
CO 006	\$648,030	
Remaining Construction Contingency	-\$531,450	
Early Demolition	\$155,401	\$156,997
Project Soft Cost - Design & Admin	\$2,462,135	\$1,883,518
TOTAL	\$12,153,943	\$6,014,281

Project Activities this Month

- ▶ Complete CMU installation (Apparatus Bay)
- ▶ Complete installation of steel elements (ledgers and columns for Living Quarters) in conjunction with CMU installation
- ▶ Complete slab on grade (Utility Rooms & Apparatus Bay)
- ▶ Complete MEP elements for slab on grade (Utility Rooms & Apparatus Bay)
- ▶ Complete pot holing and investigation for on-site storm drain.
- ▶ Commence shop fabrication of remaining steel.

Anticipated July Activities

- ▶ Complete CMU installation (Living Quarters)
- ▶ Complete 2nd Floor and Low Roof Steel and Decking
- ▶ Pour 2nd Floor Slab
- ▶ Commence High Roof Steel and Decking Installation
- ▶ Commence 1st Floor Framing
- ▶ Commence MEP rough-in at 1st Floor
- ▶ Complete on-site storm drain design and lay out
- ▶ Commence prep and lay out for work at Civic Center Drive