

WILDFIRE COMMUNITY MEETINGS

JANUARY, 2020

AGENDA

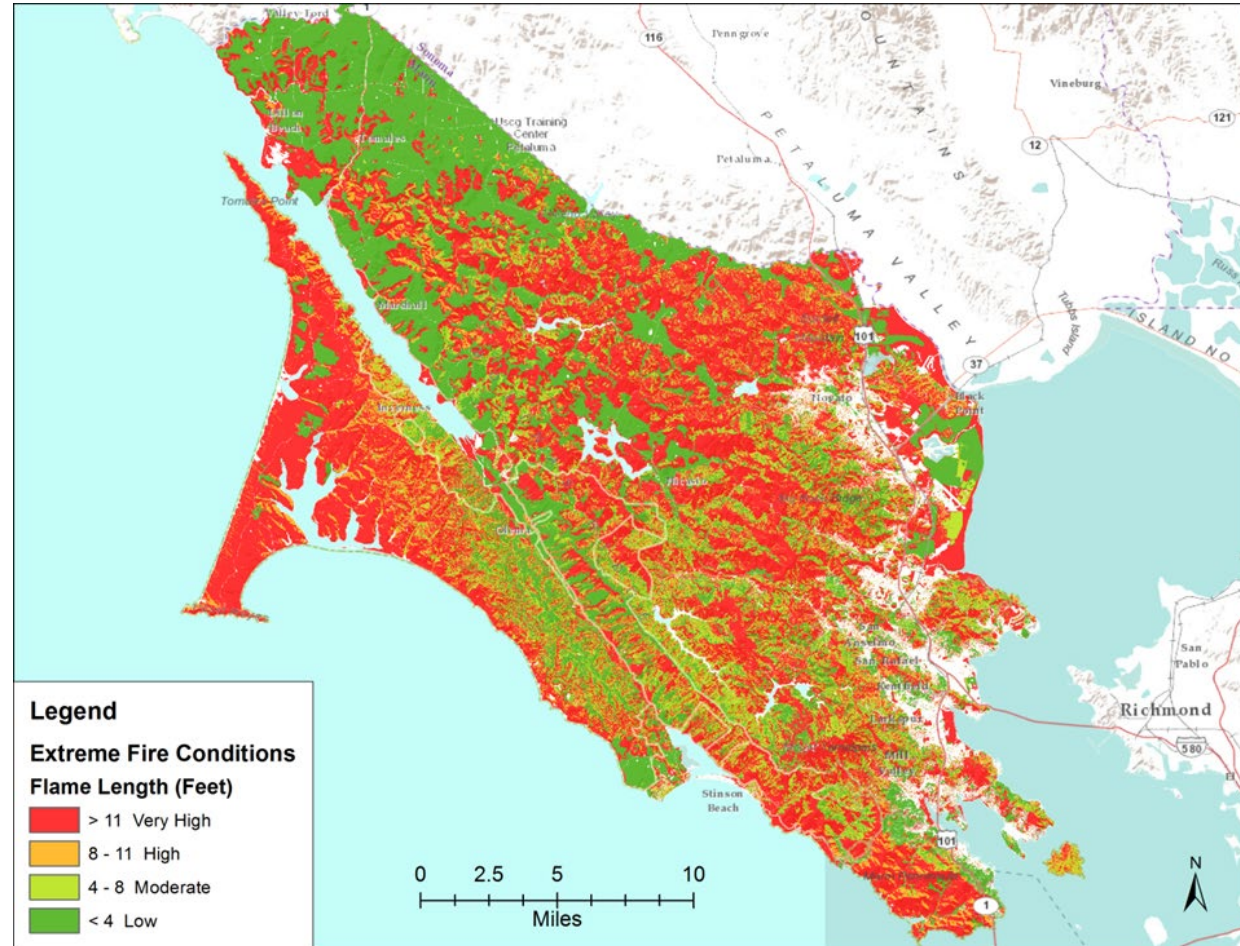
- Welcome and Introductions
- History
- Wildfire Plan Overview
- Completed and Ongoing Projects
- Evacuation Maps
- Marin Wildfire Prevention Authority

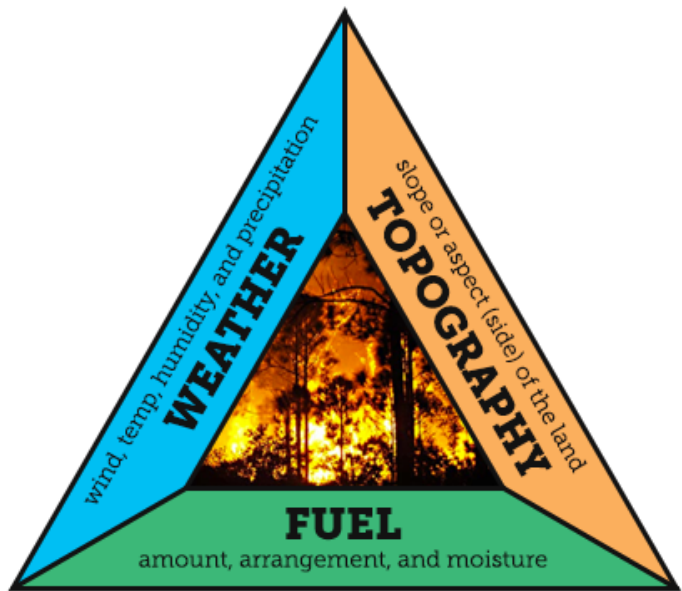
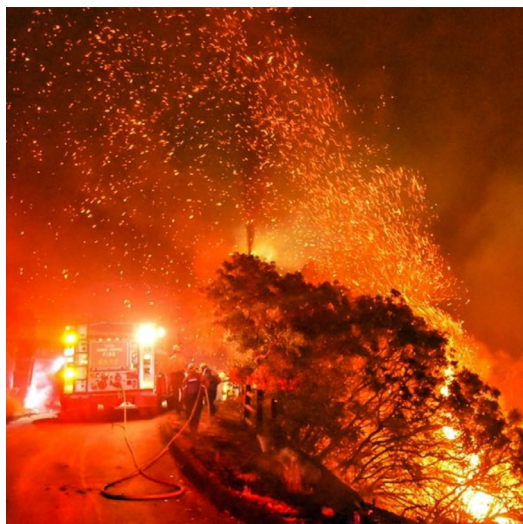


Growing Risk of Wildfire

Wildfires are

- Bigger
- Burn longer
- Cause more damage
- Kill more people





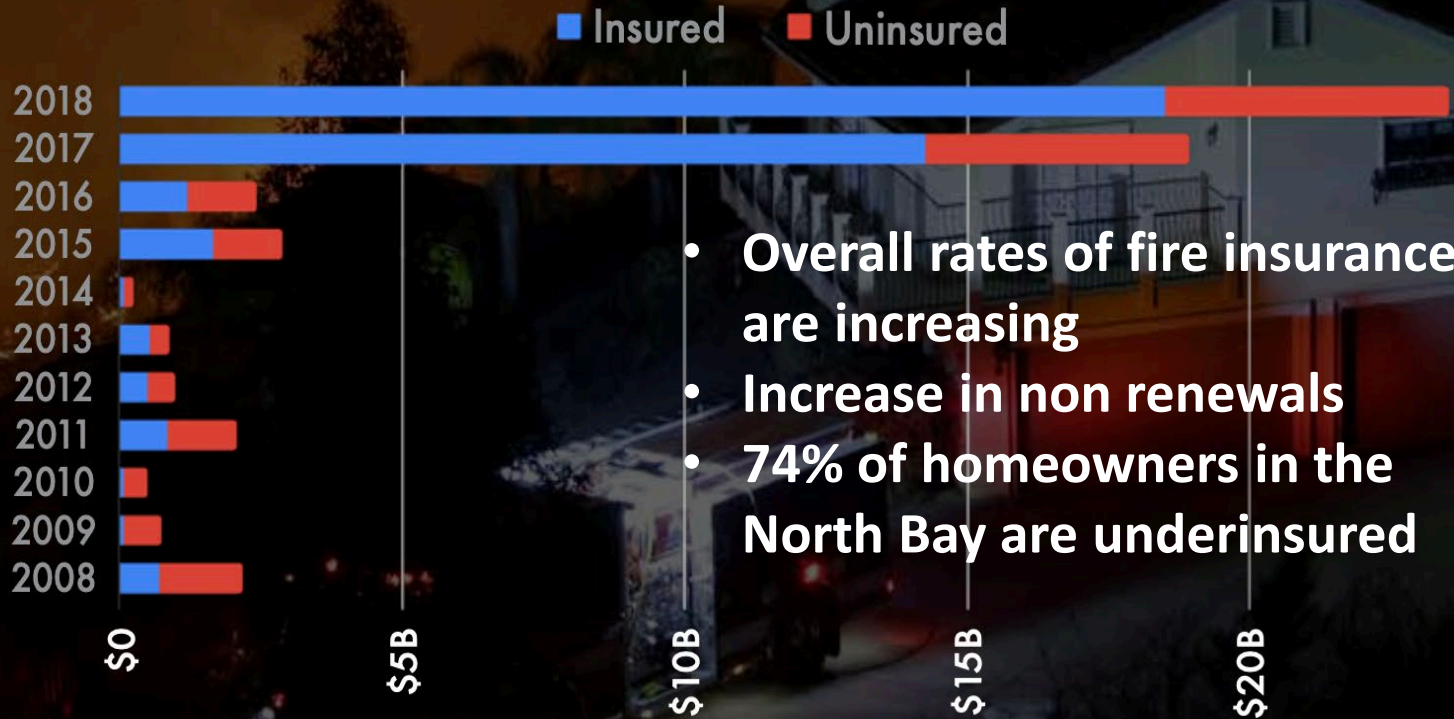
Fire Behavior Triangle





Insurance Implications

U.S. Wildfire Losses: Insured and Uninsured (2008-2018)



- Overall rates of fire insurance are increasing
- Increase in non renewals
- 74% of homeowners in the North Bay are underinsured

Sources: National Interagency Wildfire Center (NIFC); Insurance Information Institute

0





Wildfire Prevention and Protection Action Plan

DRAFTED MARCH 2019



SAN RAFAEL
THE CITY WITH A MISSION



2007 – Vegetation standards adopted

August 2018- City Council directed Fire Chief to “Be Bold” in a plan to reduce wildfire risk

January 22nd – Draft Plan Presented

March 2019 - Initial version of plan was approved as a framework

2019- Citizens Wildfire Advisory Committee provided plan feedback

November 2019- Updated Plan reviewed and supported by Committee

January 2020- Community Meetings

Mitigation, prevention, and preparedness work is ongoing

<https://www.cityofsanrafael.org/wildfire-action-plan/>

KEY COMMITTEE FEEDBACK

- Vegetation standards
- Offer support for those in need
- Emphasis on carrots, not sticks
- Create exemption process via inspections, not Vegetation Management Plans (VMPs)
- Phased implementation and enforcement
- Reduce ignitions
- Emphasis on public education and outreach



KEY POINTS OF THE PLAN

- Vegetation standards and suggestions
- Fuel and risk reduction
- Public education and outreach
- Evacuation planning
- Exemptions via inspections
- Coordination with regional partners
- Plan does not change any laws- ordinance updates still to come
- Plan execution limited by funding



Opt-in Alerts

- AlertMarin.org
- Nixle- text zip code to 888-777
- NOAA Weather Radios

Have and Practice a Family Plan

Personal Supplies- Go Bag, Grab and Go List

Mitigation



INDIVIDUAL EFFORTS

CITY WIDE MITIGATION AND PREPAREDNESS EFFORTS

- Fuel Reduction- open space, medians, chipper days, goats
- Individual Preparedness – 1 Hour 2 Get Ready Class
- Neighborhood Preparedness – CERT, NRGs, Firewise
- Short-term Rental standards
- Alert and evacuation improvements

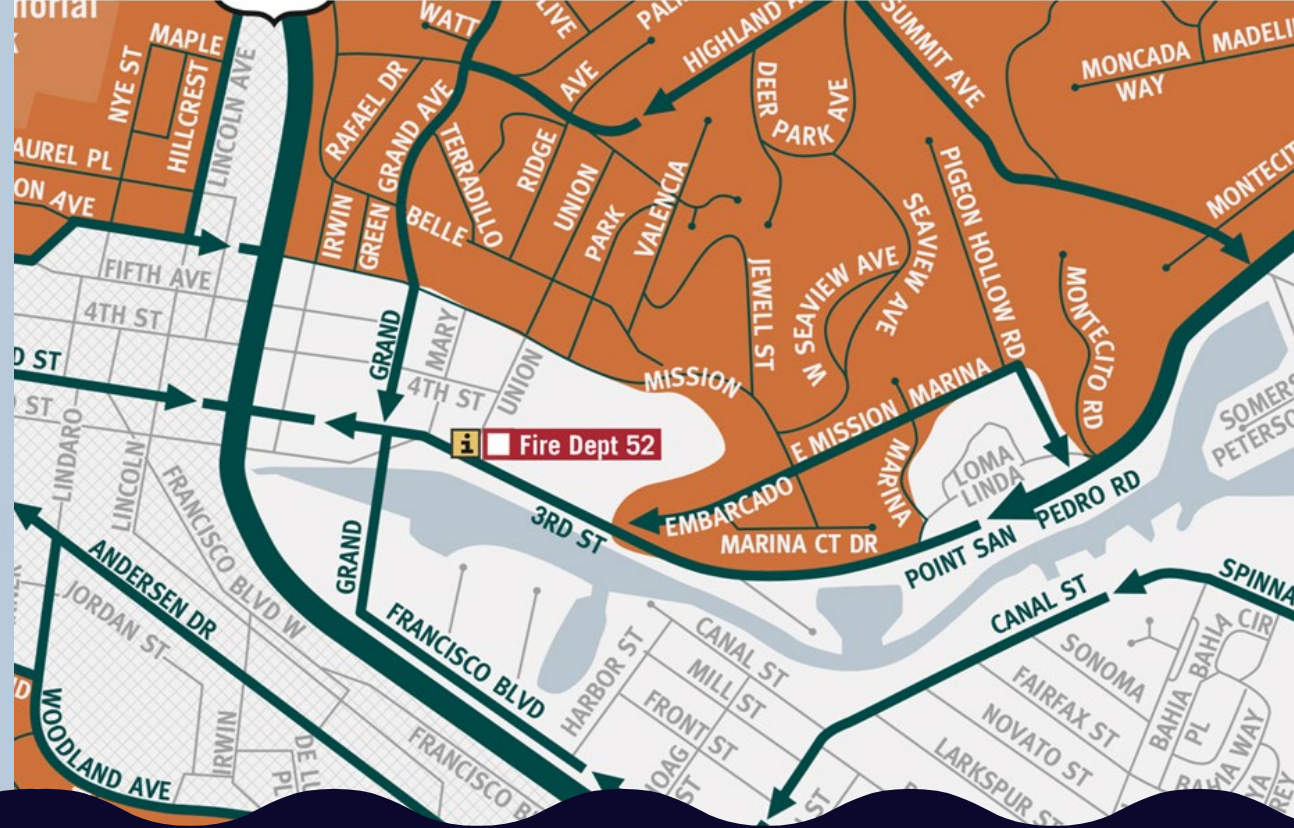
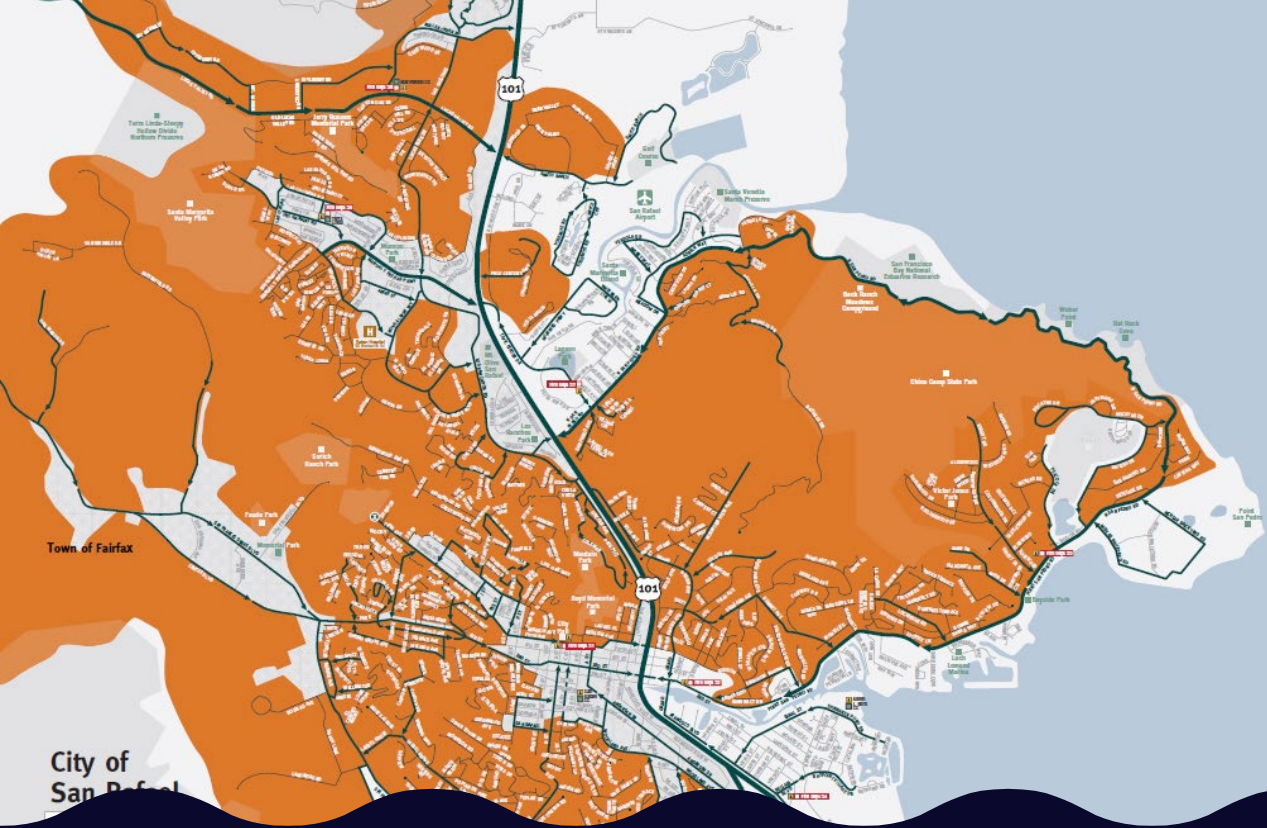


AMERICORPS PARTNERSHIP



<https://www.cityofsanrafael.org/wildfire-prevention-assistance/>





EVACUATION MAPS

DRAFT EXAMPLES

Don't wait. Plan now.

Quick facts about fire

Fire is fast: In less than 30 seconds a small flame can turn into a major fire. It only takes minutes for thick black smoke to fill a house or for it to be engulfed in flames.

Fire is hot: Heat is more threatening than flames. Room temperatures in a fire can be 300 degrees at floor level and rise to 600 degrees at eye level. Inhaling this super-hot air will scorch your lungs and melt clothes to your skin.

Fire is dark: Fire starts bright, but quickly produces black smoke and complete darkness.

Fire is deadly: Smoke and toxic gases kill more people than flames do. Fire produces poisonous gases that make you disoriented and drowsy. Asphyxiation is the leading cause of fire deaths, exceeding burns by a three-to-one ratio.

PUBLIC SAFETY POWER SHUTOFF PROGRAM

During elevated wildfire conditions, your power company may turn off power in some areas for safety. This is called a Public Safety Power Shutoff (PSPS). All Californians could be impacted by these emergency events and need to be prepared. For more information, visit: www.prepareforpowerdown.com.

Ready, Set, Go.

MANY RESIDENTS DO NOT FULLY UNDERSTAND THE IMPACT THAT COULD RESULT FROM WILDFIRE. THERE MAY NOT BE A LOT OF TIME TO FIGURE OUT WHO IS HOME, WHAT TO TAKE, WHERE OR WHEN TO GO. TAKE PERSONAL RESPONSIBILITY AND LEARN WHAT YOU CAN DO TODAY.



SCAN THE QR CODE FOR MORE DETAILS

READY...

Create a **DEFENSIBLE SPACE**. By following these suggestions a buffer can be made to slow or halt the spread of wildfire to a structure, and provide adequate safety for firefighters protecting the building.

- Remove all dead vegetation, including leaf litter, from yard, roof and rain gutters.
- Trim trees to keep branches a minimum of 10 feet from structures and other trees.
- Remove combustible material and vegetation from around and under decks.
- Remove or prune vegetation near windows.
- Remove "ladder fuels" (low-level vegetation that allows the fire to spread from the ground to the tree canopy).

Create a **DEFENSIBLE HOME**. There are measures that can be taken to safeguard a home from wildfire. Each of them will increase the home's, and possibly your family's, safety.

- Roofs covered with composition, metal or tile.
- Eaves protected by enclosing them with stucco or siding.
- Vent openings covered with 1/2" to 3/4" metal mesh.
- Exterior walls covered with non-combustible siding or stucco.
- Windows and door glazing of double pane with at least one pane tempered.
- Balconies and decks built with ignition resistant or non-combustible materials.

In case roads are blocked or unsafe for travel. **Emergency kits** should contain enough supplies and belongings for every member of your household for at least 72 hours. Your to-go bag holds items needed to help you evacuate quickly and safely.



GO.

Leave early! Knowing when to leave, what to take, where to go, and how to get there will prevent you and your family from being caught in smoke, fire, or road congestion while evacuating during a wildfire.

Don't wait to be told by authorities. If you are advised to leave, don't hesitate. Leave to a predetermined location. Have several travel routes.

by the fire or by emergency vehicles and equipment. Choose the route away from the fire.



Shelter in place If trapped by a wildfire, know when and how to shelter in place. Shelter away from outside walls. Patrol inside your home for spot fires and extinguish them. Wear long sleeves and long pants made of natural fibers such as cotton. Stay hydrated. Ensure you can exit the house if it catches fire (remember that if it's hot inside the house it is far to five times hotter outside) Check your roof and extinguish any fires, sparks, or embers. Check inside the attic for hidden embers. Patrol your property and

Know your way out.

FAMILIARIZE YOURSELF WITH YOUR NEIGHBORHOOD FIRE ZONE



- 1 Arch Beach Heights
- 2 Balboa Nyes
- 3 Big Bend
- 4 Bluebird Canyon
- 5 Boat Canyon
- 6 Canyon Acres
- 7 Coanotus
- 8 Club Laguna
- 9 North Coast
- 10 Central Coast
- 11 South Coast
- 12 Downtown
- 13 El Tero
- 14 Emerald Bay
- 15 Irvine Cove
- 16 Mir Vista
- 17 Old Top of the World
- 18 Park Avenue
- 19 Sunset
- 20 Temple Hills
- 21 Top of the World
- 22 Wesley



ECWSS

Your neighborhood fire information

City of Laguna Beach
www.lagunabeachcity.net

PLEASE KEEP FOR YOUR REFERENCE

How prepared are you?

Did you know that 88% of Laguna Beach is within the "Very High Fire Severity Zone"? Take personal responsibility and prepare long before the threat of a wildland fire so your home and family are ready.

Why should you evacuate?

Public Safety Officials use Immediate Evacuation Order as a protective action in certain emergencies to help save the lives of residents, visitors, and first responders. Upon receiving an Immediate Evacuation Order, you should leave as quickly as possible. Evacuation routes become severely congested during evacuations.

TYPES OF EVACUATION ORDERS

Immediate Evacuation Order

Immediate Evacuation Order means there is an imminent threat to life and property. People and their pets in the Immediate Evacuation Order area should evacuate now, without delay. Law enforcement personnel will clearly state failure to evacuate may result in physical injury or death, a future opportunity to evacuate may not exist, and resources to rescue them may not be available.

Potential Evacuation Order

During events with notice or other slowly unfolding incidents where advance warning is available, there may be situations where Potential Evacuation Orders are warranted. Potential Evacuation Order means that there is a potential threat to life and property and preparations should be made should an Immediate Evacuation Order be issued. Individuals with access or functional needs should consider leaving now. If at any time you feel threatened, action should be taken to leave for a safe area.

EMERGENCY NOTIFICATIONS

Notifications from AlertOC are targeted to areas with an imminent threat to life and safety rather than the entire city. Notifications from Nixle are sent to

anyone registered regardless of where the incident is in the city. Register for AlertOC by visiting www.alertoc.com and Nixle by texting 92651 to 888-777. **Both are important!**

Left image: Laguna Beach Fire 1993. Right image: Alois Fire 2016.

Get Connected.

This information could save your life! Share it with your family, neighbors and friends.

Website: www.lagunabeachcity.net/evacuation
Nixle Alert: Register by texting 92651 to 888-777
<https://local.nixle.com/register/>

AlertOC: www.alertOC.org
Twitter: @LagunabeachPD @Lagunabeachgov



BROCHURE EXAMPLE

2 OAK MANOR Know your way out.



Scan this QR code to download your neighborhood map on your phone or tablet!

Familiarize yourself with major routes out of your neighborhood in case of an evacuation.



Neighborhood Example

EVACUATION SAFETY TIPS

What to where?
Wear goggles, leather gloves, and heavy shoes/boots; protect skin with long cotton or wool clothing; protect airway and face with an N95 mask and bandanna. Wear a hat to protect hair from embers.

Where to go? Avoid hillsides. Head for a valley floor by car, away from the fire if possible.

Last resort... Go on foot or bicycle only if no other option exists. Sheltering indoors or in a car is usually safer than being exposed outside.

Never evacuate uphill, on fire roads, or into open spaces where there is unmaintained vegetation.

Don't panic in traffic! Inside a car on pavement is one of the safest places during a wildfire.

EMERGENCY ALERTS & FIRE INFORMATION

WILDFIRES CAN STRIKE SUDDENLY AND WITHOUT WARNING. EMERGENCY MANAGERS WILL ATTEMPT TO NOTIFY RESIDENTS WHEN EVACUATION IS NECESSARY, BUT THIS IS NOT ALWAYS POSSIBLE. ADVANCE PREPARATION AND SITUATION AWARENESS ARE REQUIRED.

ALERT MARIN: Emergency Notifications and Evacuations

For ACTION at a specific ADDRESS

- Critical evacuation and life safety information, during emergencies, to specific addresses.
- Voice, Text, and Email messages

To register visit www.alertmarin.org

NIXLE: Information Notices

For INFORMATION to an entire ZIP CODE

- General information and less critical updates to larger populations, by zip code only.
- Text messages only

To register, text your zip code to 888777

AM/FM RADIO, SOCIAL MEDIA:

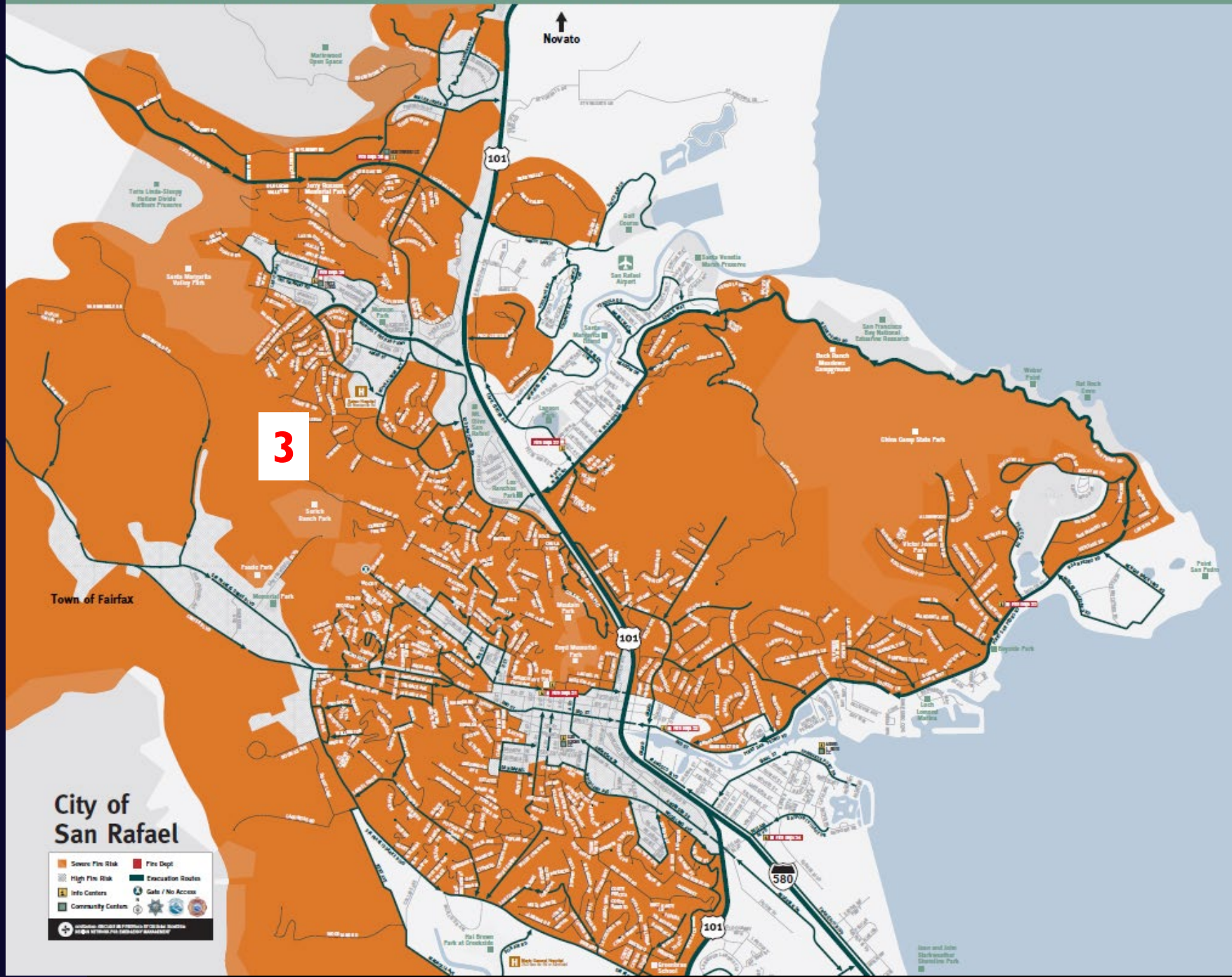
Bay Area News; Twitter, Facebook

Monitor FM 106.9, AM 740 (KCBS); AM 810 (KGO); FM 88.5 (KQED); FM 92.3; FM 90.5; FM 89.9 (KWMR)

Follow: @MarinSheriff, @MarinCountyFire, @FairfaxPD, and @RossValleyFire

NOAA Radios: tune to 162.500 or 162.400 (same code 006041)

Familiarize yourself with major routes and at least two ways out of your neighborhood in case of an evacuation.



Citywide Example

MAP FEEDBACK

1. Label dead ends and gates
2. Label Temporary Refuge Areas (name ideas?)
3. Citywide Landmarks
4. Neighborhood landmarks
5. Citywide effectiveness
6. Neighborhood effectiveness





WHAT'S LEFT AND NEXT

Ongoing fuel reduction

Updating ordinances

Outreach and education

Parking boxes


Open Space Ranger

Evacuation routes

Low income assistance

Limited by current budget

MARIN WILDFIRE PREVENTION AUTHORITY

- Fits with Plan item 38- Coordination with others
 - Would help achieve plan objectives
 - Local controlled funding would support park ranger and parking boxes among other projects
 - Will not exist without Ballot measure passing
 - More information on MWPA at <https://www.marinwildfire.org/>
- 



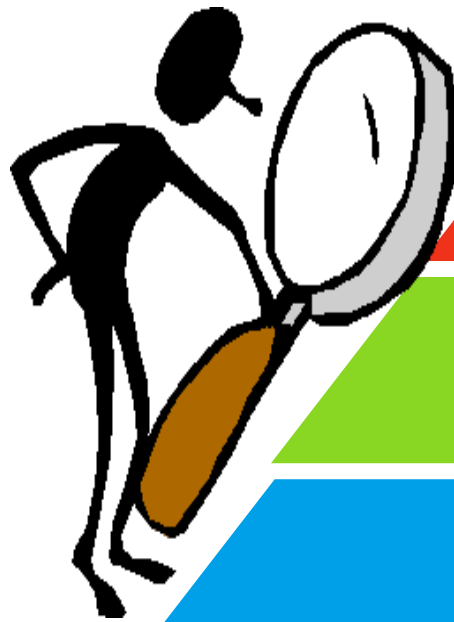
Goals of the Initiative

- Improve emergency alert and fire warning systems
- Improve evacuation routes and infrastructure for quicker, safer evacuations
- Reduce hazardous vegetation using environmentally-responsible practices
- Expand defensible space and fire safety evaluations
- Protect critical infrastructure
- Provide support for seniors, low-income homeowners and people with disabilities needing assistance to keep their homes fire resistant
- Expand neighborhood wildfire safety and preparedness programs
- Funding strictly for wildfire prevention and protection





Governance



Citizens Oversight Committee

Board of Directors

Elected Officials from Member Agencies

Operations/Budget Committee

Agency Staff of Members

Advisory Committee

LMA, PG&E, ESP, Technical Staff





Program Funding

Program Area		Estimated Funding	% of Funds
JPA Core	Wildfire Detection & Evacuation Program Improvements	\$11.5 million	60%
	Vegetation Management/Fire Hazard Reduction		
	Grants		
	Public Education -- FIRESafe MARIN		
Defensible Space Evaluations – Home Hardening With option for agency to administer vs JPA		\$3.9 million	20%
Agency Specific Wildfire Prevention Mitigation		\$3.9 million	20%
Total Cost:		\$19.3 million	100%





Structure of Parcel Tax

- **Up to 0.10 per building square foot**
 - Improved residential and commercial
 - Cost to average homeowner = \$17.50/month
- **Multi-unit residential (3 or more units)**
 - \$75/unit or \$6.25/month
- **Unimproved parcels**
 - 0 – 0.25 acres - \$25/parcel
 - 0.25 - 0.50 acres - \$100/parcel
 - 0.50 and greater - \$150/parcel
- **Senior low-income exemption**
- **Annual inflation adjustment** — Bay Area CPI 3% cap





- For more information
- www.marinwildfire.org



SUMMARY AND RESOURCES

- Emergency Alerts- Text zip code to 888-777 and AlertMarin.org
- Join CERT- ReadyMarin.org
 - Next meeting March 4th 6:30-9pm, B St.
- Vegetation Removal Assistance Program:
<https://www.cityofsanrafael.org/wildfire-prevention-assistance>
- More information on MWPA at <https://www.marinwildfire.org/>
- San Rafael Office of Emergency Services: SROES.org
- View the March 2019 Plan: <https://www.cityofsanrafael.org/wildfire-action-plan/>
- Request a vegetation inspection: 415-485-3304