



1 PERSPECTIVE
A|01 SCALE NTS

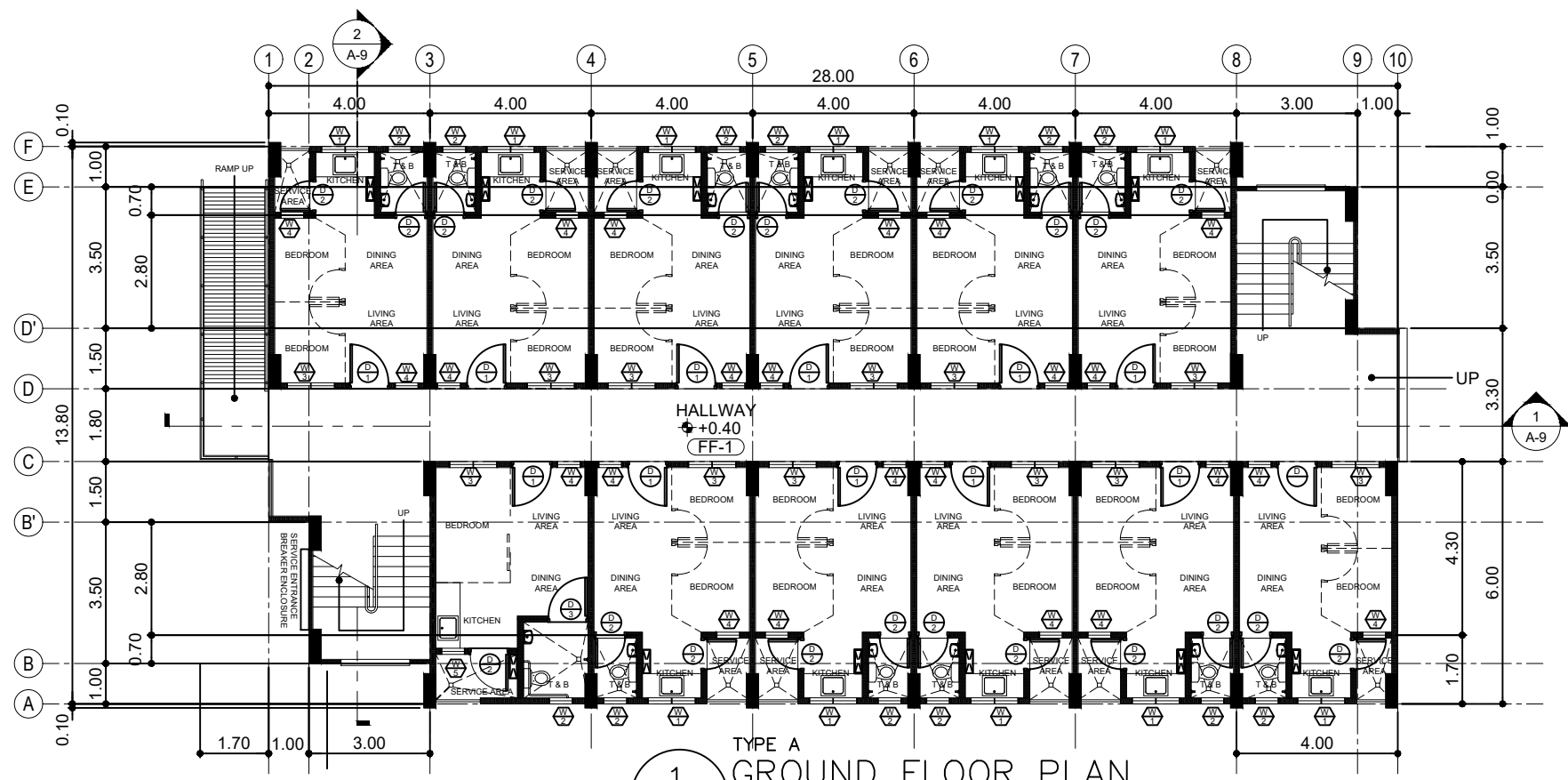
2 VICINITY MAP
A|01 SCALE NTS

TABLE OF CONTENTS		Republic of the Philippines OFFICE OF THE BUILDING OFFICIAL
SHEET NUMBER	SHEET TITLE / CONTENTS	District / City / Municipality
ARCHITECTURAL		
A01	PERSPECTIVE, VICINITY MAP, SITE DEVELOPMENT PLAN, LOCATION MAP, TABLE OF CONTENTS	
A02	GROUND FLOOR PLAN, PWD UNIT LAYOUT, GENERAL NOTES	
A03	SECOND FLOOR PLAN, THIRD FLOOR PLAN, TYPICAL UNIT LAYOUT, DOWNSPOUT AT LEDGE	
A04	FIFTH FLOOR PLAN, ROOF PLAN	
A05	REFLECTED CEILING PLAN (GROUND FLOOR-FIFTH FLOOR)	
A06	FRONT ELEVATION, RIGHT SIDE ELEVATION	
A07	REAR ELEVATION, LEFT SIDE ELEVATION	
A08	LONGITUDINAL SECTION, CROSS SECTION	
A09	SCHEDULE OF DOORS AND WINDOWS	
A10	STAIR DETAILS, STAIR SECTION, STAIR ELEVATION, BALUSTER DETAILS	
A11	T&B DETAILS, PWD T&B DETAILS, KITCHEN DETAILS	
A12	PIPE CHASE DETAILS, DROPPED FLOOR DETAILS, RAMP DETAILS	
A13	ACCESS LADDER DETAILS, ROOF GUTTER DETAILS	
A14	ROOF DECK DETAILS, OVERFLOW SCUPPER DETAILS	
A15	WINDOW DETAILS, SERVICE AREA DETAILS, RAILING DETAILS, LEDGE DETAILS	
A16	ROOF DECK DETAILS, PLANT BOX DETAILS	
STRUCTURAL		
LINE & GRADE		
ARCHITECTURAL		
ELECTRICAL		
E-01	LIGHTING AND POWER LAYOUT, BLOW-UP UNIT PLAN, BLOW-UP PWD UNIT PLAN, LEGEND	
E-02	AUXILIARY LAYOUT, GENERAL NOTES	
E-03	LOAD SCHEDULE, FIRE ALARM SINGLE LINE RISER DIAGRAM, PANEL DETAILS, SINGLE LINE RISER DIAGRAM	
E-04	CATV SINGLE LINE RISER DIAGRAM, SINGLE LINE TELEPHONE RISER DIAGRAM, PROPOSED CONCRETE SERVICE ENTRANCE WALL	
PLUMBING		
P01	SEWER AND DRAINAGE LAYOUT	
P02	SEWER AND DRAINAGE ISOMETRIC VIEW	
P03	WATER LINE LAYOUT, WATER LINE ISOMETRIC VIEW	
P04	BLOW-UP DETAILS OF SEWER AND WATER LINE LAYOUT	
P05	GROUND FLOOR WATER LINE RISER DIAGRAM, FIRE CABINET DETAILS, WATER LINE RISER DIAGRAM, DRY STAND PIPE RISER DIAGRAM	
P06	PUMP HOUSE DETAILS	
P07	PUMP HOUSE DETAILS	
P08	SEPTIC TANK DETAILS	
MECHANICAL		
FP01	GROUND FLOOR AFSS LAYOUT, TYPICAL 2ND-5TH FLOOR AFSS LAYOUT	
LAND DEVELOPMENT		
LD01	SITE DEVELOPMENT PLAN	
LD02	TOPOGRAPHIC MAP	
LD03	ROAD LAYOUT PLAN	
LD04	ROAD LAYOUT PLAN	
LD05	DRAINAGE LAYOUT	
LD06	SEWER LAYOUT	
LD07	ROAD, PARKING, CURB AND GUTTER DETAILS	
LD08	DRAINAGE CANAL, BOX CULVERT AND PATHWALK DETAILS	

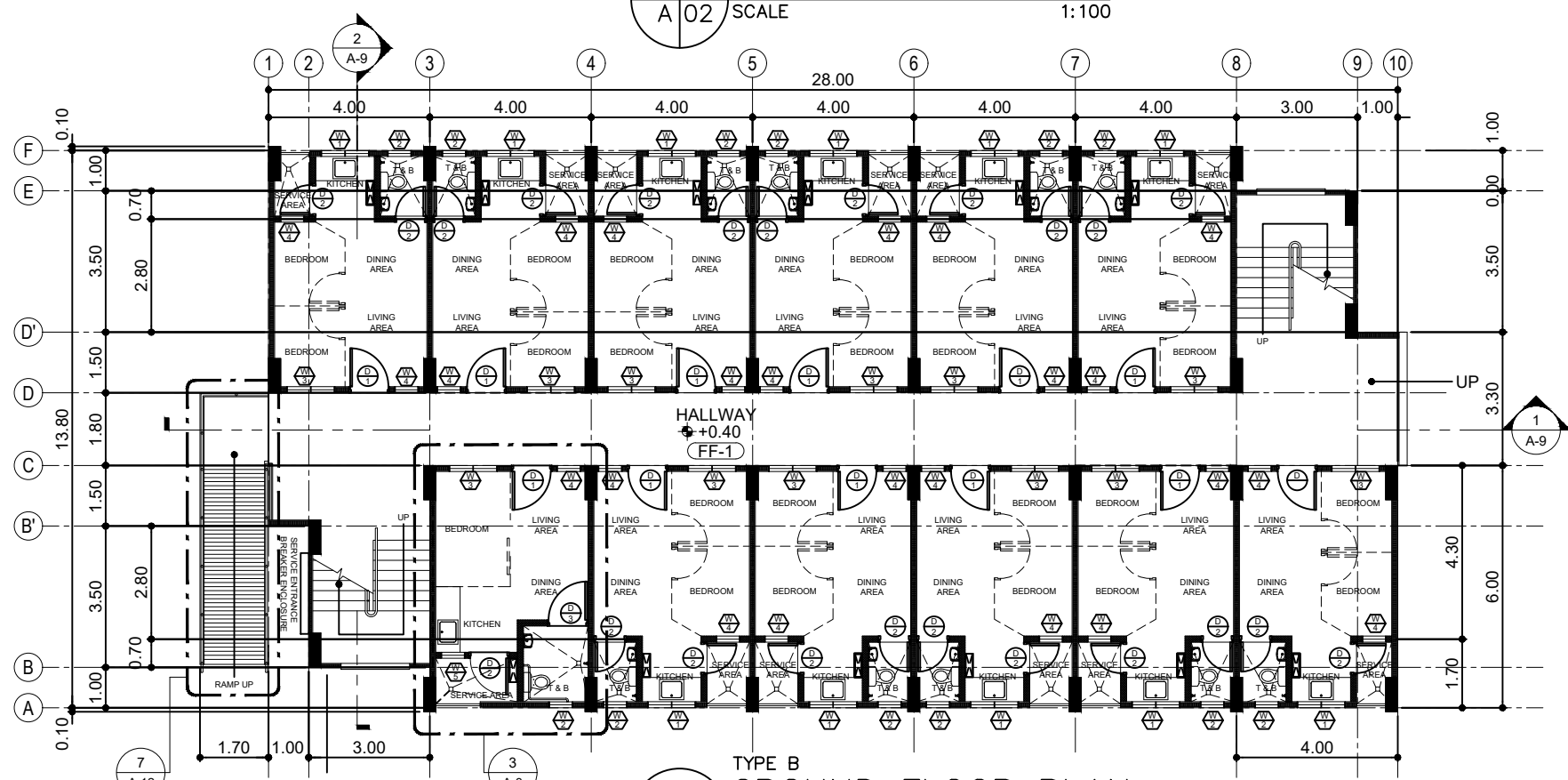
3 SITE DEVELOPMENT PLAN
A|01 SCALE 1:500

4 LOCATION MAP
A|01 SCALE NTS

<p>Office of the President NATIONAL HOUSING AUTHORITY Elliptical Road, Diliman, Quezon City</p> <p>PROJECT TITLE: PROPOSED STANDARD 5-STORY LOW-RISE BUILDING & LAND DEVELOPMENT</p> <p>LOCATION:</p>	ARCHITECT: JOSHUA S. DELOS REYES	DESIGNED BY: DRAWN BY: SHEET CONTENT: PERSPECTIVE, SITE DEVELOPMENT PLAN, LOCATION MAP, VICINITY MAP REVISIONS: DATE:	CHECKED BY: DATE:	STANDARD DESIGNED PREPARED BY: HOUSING TECHNOLOGY DEVELOPMENT OFFICE SUBMITTED BY:	REVIEWED BY:	RECOMMENDING APPROVAL:	APPROVED BY: MARCELINO P. ESCALADA, JR. GENERAL MANAGER	SHEET NO. A 01 16
	REG No.: 32136 DATE: 07/30/20 PTR No.: 10320138 PLACE: CALOOCAN CITY	JUANCHO M. CORPUZ DISTRICT MANAGER MANAVA DISTRICT OFFICE	MAURA D. AGGARAO PROGRAM MANAGER PROGRAM OFFICE, NORTH SECTOR	MARIA TERESA P. OBLIPIAS REGIONAL MANAGER NORTH SECTOR	MA. BENITA O. REGALA GROUP MANGER HSSG			



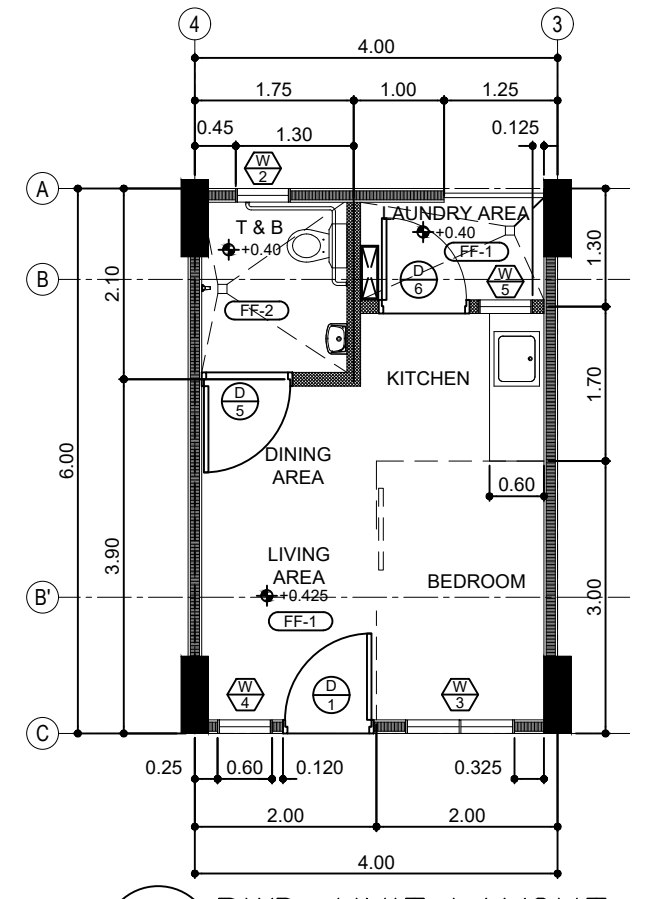
1 TYPE A
GROUND FLOOR PLAN
SCALE 1:100



2 TYPE B
GROUND FLOOR PLAN
SCALE 1:100

LEGEND	
FLOOR FINISHES	
FF-1	CONCRETE TOPPING, SMOOTH FINISH
FF-2	300 MM X 300 MM VITRIFIED UNGLAZED CERAMIC TILES
SCHEDULE OF WALL FINISHES	
EXTERIOR: PLAIN CEMENT PLASTERED, PAINTED FINISH	
INTERIORS EXCEPT AT T&B: PLAIN CEMENT PLASTERED FINISH	
T&B: 5 LAYERS OF 300 MM X 300 MM GLAZED CERAMIC TILES FROM BOTTOM OF WALL, AND PLAIN CEMENT PLASTERED FINISH FOR REST OF WALL	

- GENERAL NOTES:**
- SEPARATE APPROVALS FOR PERMITS MAY BE REQUIRED FOR BUILDING AND SITE IMPROVEMENT SYSTEMS INCLUDING, BUT NOT LIMITED TO, FIRE PROTECTION SYSTEM. PREPARATION OF DOCUMENTS FOR OBTAINING THE PERMIT(S) SHALL BE THE RESPONSIBILITY OF THE CONTRACTOR.
 - ALL FLOOR ELEVATIONS SHOWN REFERENCED AS FINISHED FLOOR ELEVATIONS REFER TO TOP OF CONCRETE SLAB UNLESS OTHERWISE NOTED.
 - DETAILS ARE INTENDED TO SHOW METHOD AND MANNER OF ACCOMPLISHING WORK MINOR MODIFICATIONS MAY BE REQUIRED TO SUIT JOB CONDITIONS AND SHALL BE INCLUDED AS PART OF CONTRACTOR'S WORK.
 - REFER TO CIVIL, LANDSCAPE, STRUCTURAL, MECHANICAL, PLUMBING, ELECTRICAL, FIRE PROTECTION AND OTHER DISCIPLINE DRAWINGS FOR ADDITIONAL GENERAL NOTES.
 - ALL INTERIOR PARTITIONS, FURNITURES LAYOUT, AND LANDSCAPE ELEMENTS ARE INDICATIVE ONLY AND MAY CHANGE. CONTRACTOR SHALL VERIFY THE DISCIPLINE DRAWINGS.
 - ALL DISTANCES, DATA, AND EXISTING STRUCTURES AND UTILITIES ABOVE OR BELOW THE GROUND, WITHIN THE LIMITS OF THIS PROJECT SHALL BE CHECKED BY THE CONTRACTOR. IN CASE OF CONFLICT, THE ARCHITECT SHALL BE NOTIFIED IMMEDIATELY IN ORDER THAT A CLARIFICATION MAY BE MADE.
 - CONTRACTOR SHALL VERIFY CONDITIONS AT THE SITE AND REPORT ANY DISCREPANCIES TO THE ARCHITECT BEFORE PROCEEDING THE WORK.
 - SITE SURVEY DRAWINGS ARE FOR INFORMATION ONLY. CONTRACTOR SHALL VERIFY AND PROVIDE ALL SITE SURVEY REQUIRED FOR THE WORK OF THIS PROJECT.
 - LOT AND BUILDING BOUNDARIES SHALL BE SUPPORTED BY RETAINING WALLS AND FENCES. CONTRACTOR SHALL VERIFY EXISTING HEIGHTS, ELEVATIONS, AND OTHER CONDITIONS.
 - CONTRACTOR SHALL VERIFY ALL DOOR SIZES, SWINGS, LOCATIONS AND DETAILS WITH JOB CONDITIONS PRIOR TO FABRICATION AND INSTALLATION.
 - FINISHES INDICATED IN WALL AND BSE, COLUMNS SHALL APPLY TO ALL WALLS AND COLUMNS WITHIN THE AREA, UNLESS OTHERWISE NOTED.
 - ALL WORKS HEREIN SHALL BE DONE UNDER THE STRICT SUPERVISION OF DULY LICENCED AND EXPERIENCED ARCHITECT/ENGINEER.
 - THE GENERAL CONTRACTOR, SUB-CONTRACTORS INCLUDING SPECIALTY CONTRACTORS SHALL SUBMIT PROPER SHOP DRAWINGS INCLUDING MATERIALS SAMPLE PRIOR TO INSTALLATIONS FOR ARCHITECT'S APPROVAL.



3 PWD-UNIT LAYOUT
SCALE 1:50



Office of the President
NATIONAL HOUSING AUTHORITY
Elliptical Road, Diliman, Quezon City

PROJECT TITLE:
**PROPOSED STANDARD 5-STORY
LOW-RISE BUILDING & LAND DEVELOPMENT**

LOCATION:

ARCHITECT:

DESIGNED BY: _____
DRAWN BY: _____
SHEET CONTENT:
**GROUND FLOOR PLAN, PWD-UNIT
LAYOUT GENERAL NOTES**

REVISIONS: _____ DATE: _____

REG No.: _____ DATE: _____
PTR No.: _____ PLACE: _____

STANDARD DESIGNED PREPARED BY:
HOUSING TECHNOLOGY DEVELOPMENT OFFICE

SUBMITTED BY: _____ REVIEWED BY: _____

JUANCHO M. CORPUZ
DISTRICT MANAGER
MANAVA DISTRICT OFFICE

MAURA D. AGGARAO
PROGRAM MANAGER
PROGRAM OFFICE, NORTH SECTOR

RECOMMENDING APPROVAL:

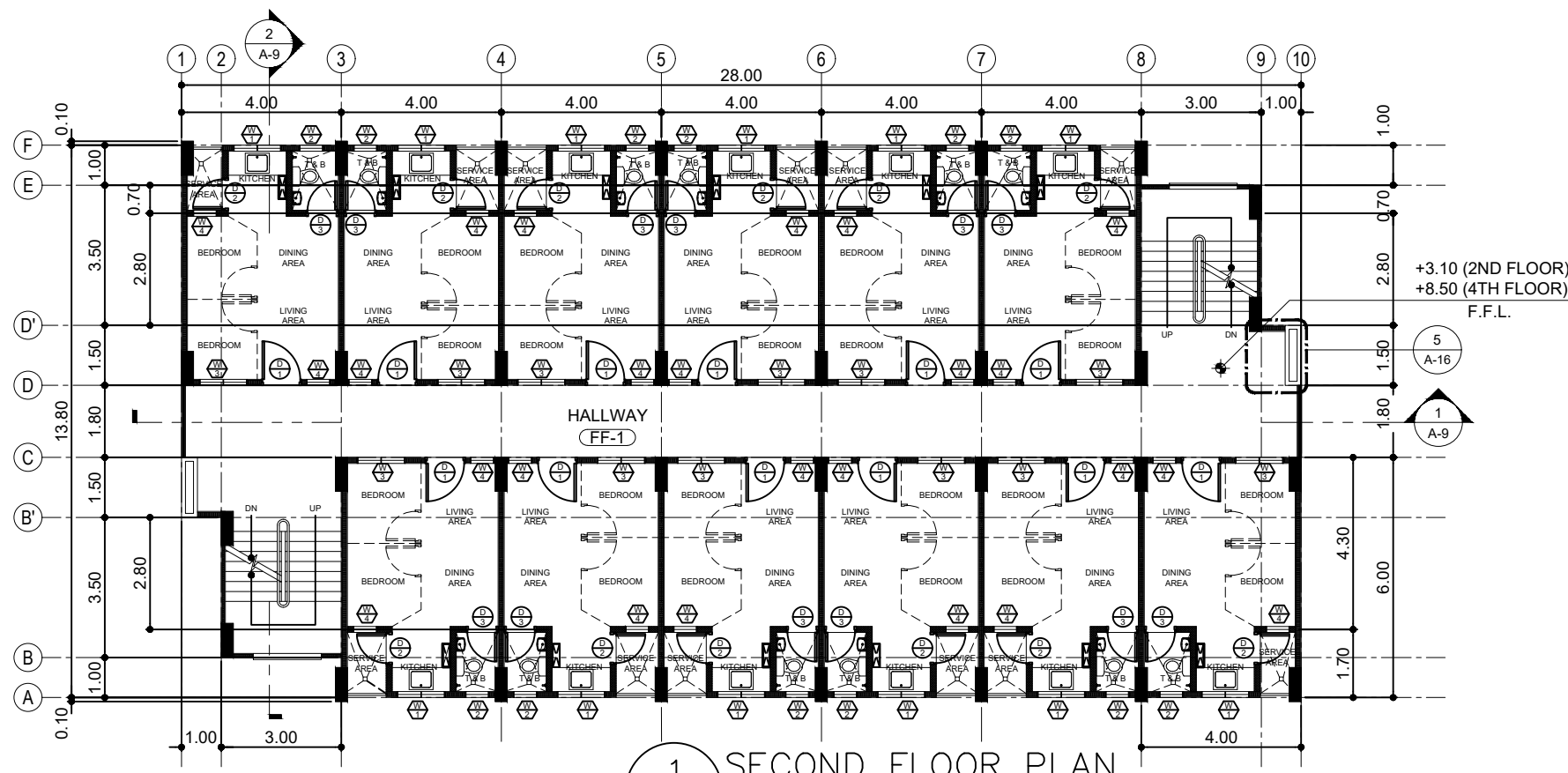
MARIA TERESA P. OBLIPIAS
REGIONAL MANAGER
NORTH SECTOR

MA. BENITA O. REGALA
GROUP MANGER
HSSG

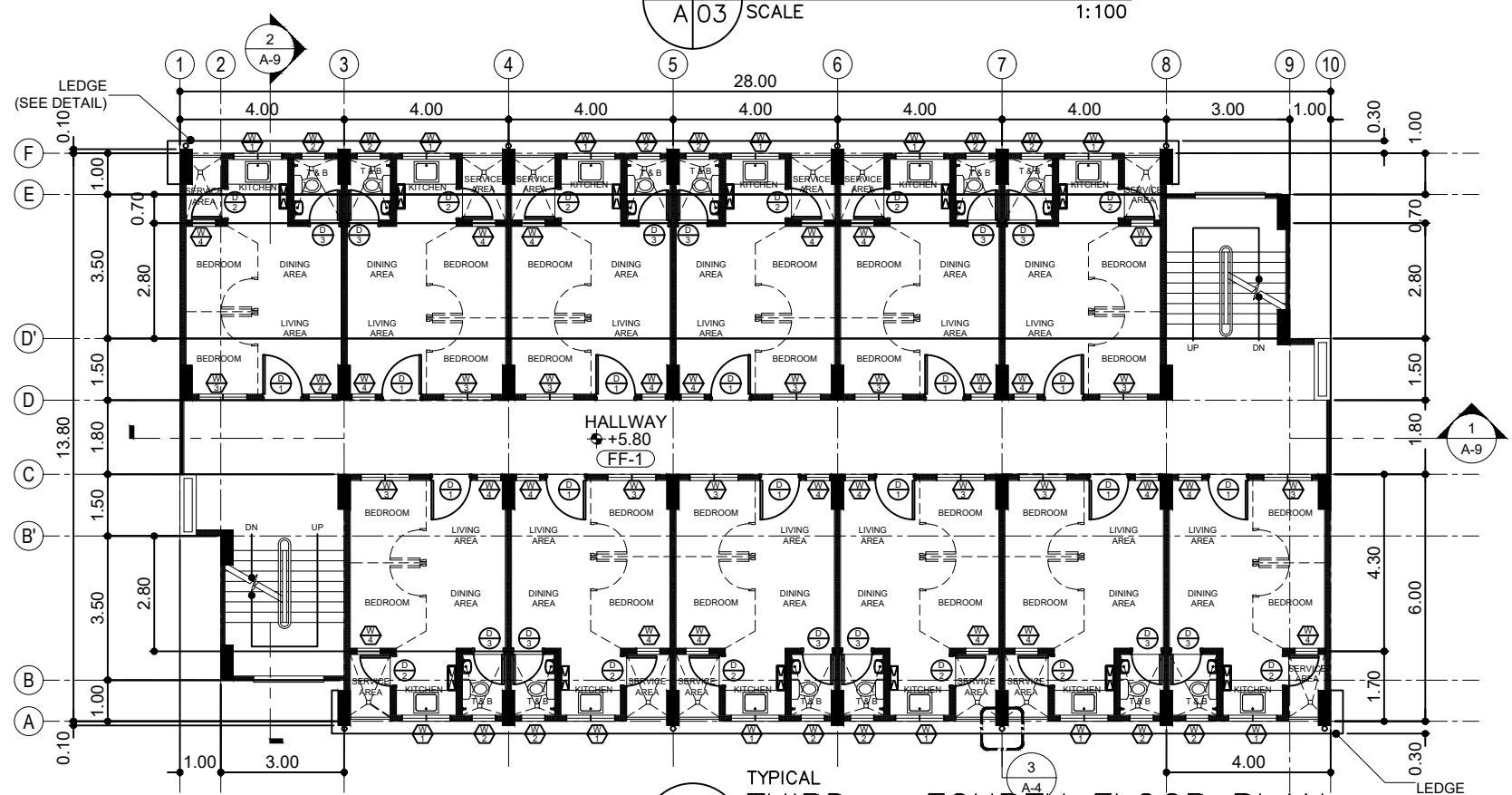
APPROVED BY:

MARCELINO P. ESCALADA, JR.
GENERAL MANAGER

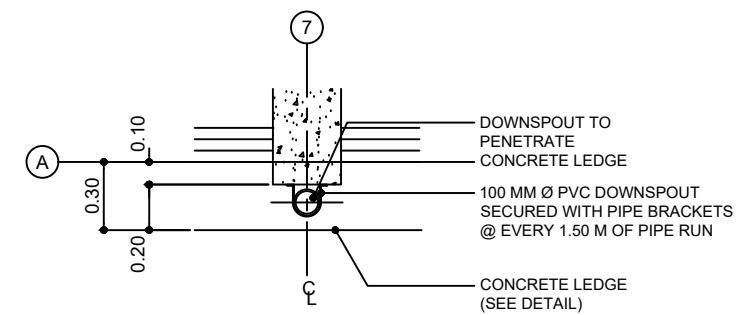
SHEET NO.
A
02
16



1 SECOND FLOOR PLAN
A/03 SCALE 1:100

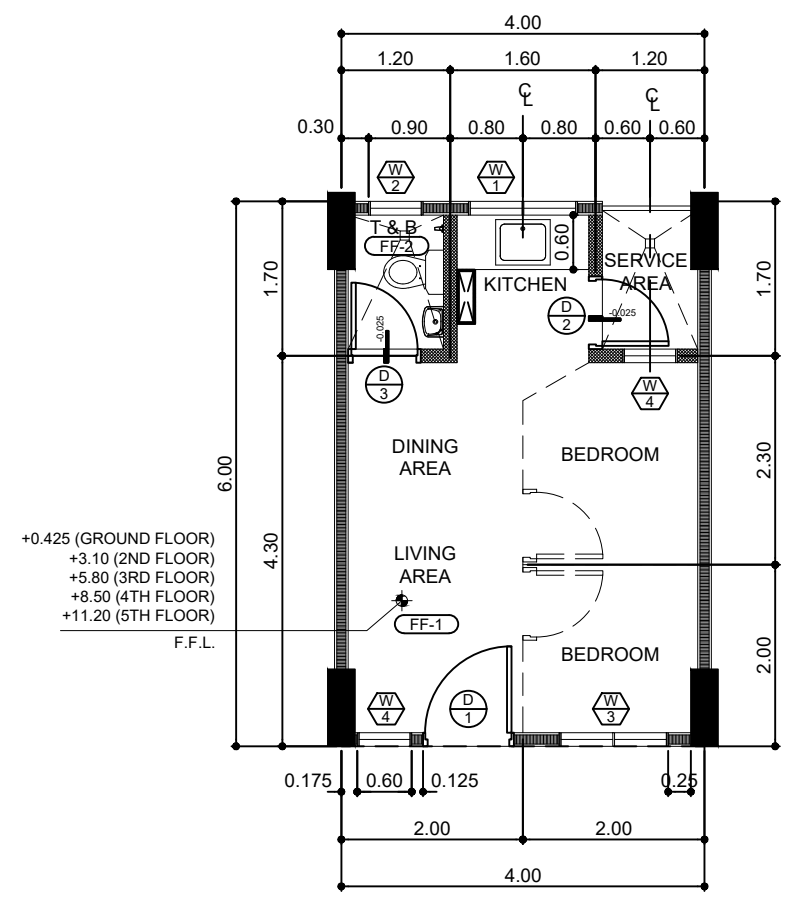


2 TYPICAL THIRD - FOURTH FLOOR PLAN
A/03 SCALE 1:100



4 TYPICAL DETAIL
DOWNSPOUT AT LEDGE
SCALE 1:20

LEGEND	
FLOOR FINISHES	
FF-1	CONCRETE TOPPING, SMOOTH FINISH
FF-2	300 MM X 300 MM VITRIFIED UNGLAZED CERAMIC TILES
SCHEDULE OF WALL FINISHES	
EXTERIOR: PLAIN CEMENT PLASTERED, PAINTED FINISH	
INTERIORS EXCEPT AT T&B: PLAIN CEMENT PLASTERED FINISH	
T&B: 5 LAYERS OF 300 MM X 300 MM GLAZED CERAMIC TILES FROM BOTTOM OF WALL, AND PLAIN CEMENT PLASTERED FINISH FOR REST OF WALL	



3 TYPICAL UNIT LAYOUT
A/03 SCALE 1:50



Office of the President
NATIONAL HOUSING AUTHORITY
Elliptical Road, Diliman, Quezon City
PROJECT TITLE:
**PROPOSED STANDARD 5-STOREY
LOW-RISE BUILDING & LAND DEVELOPMENT**
LOCATION:

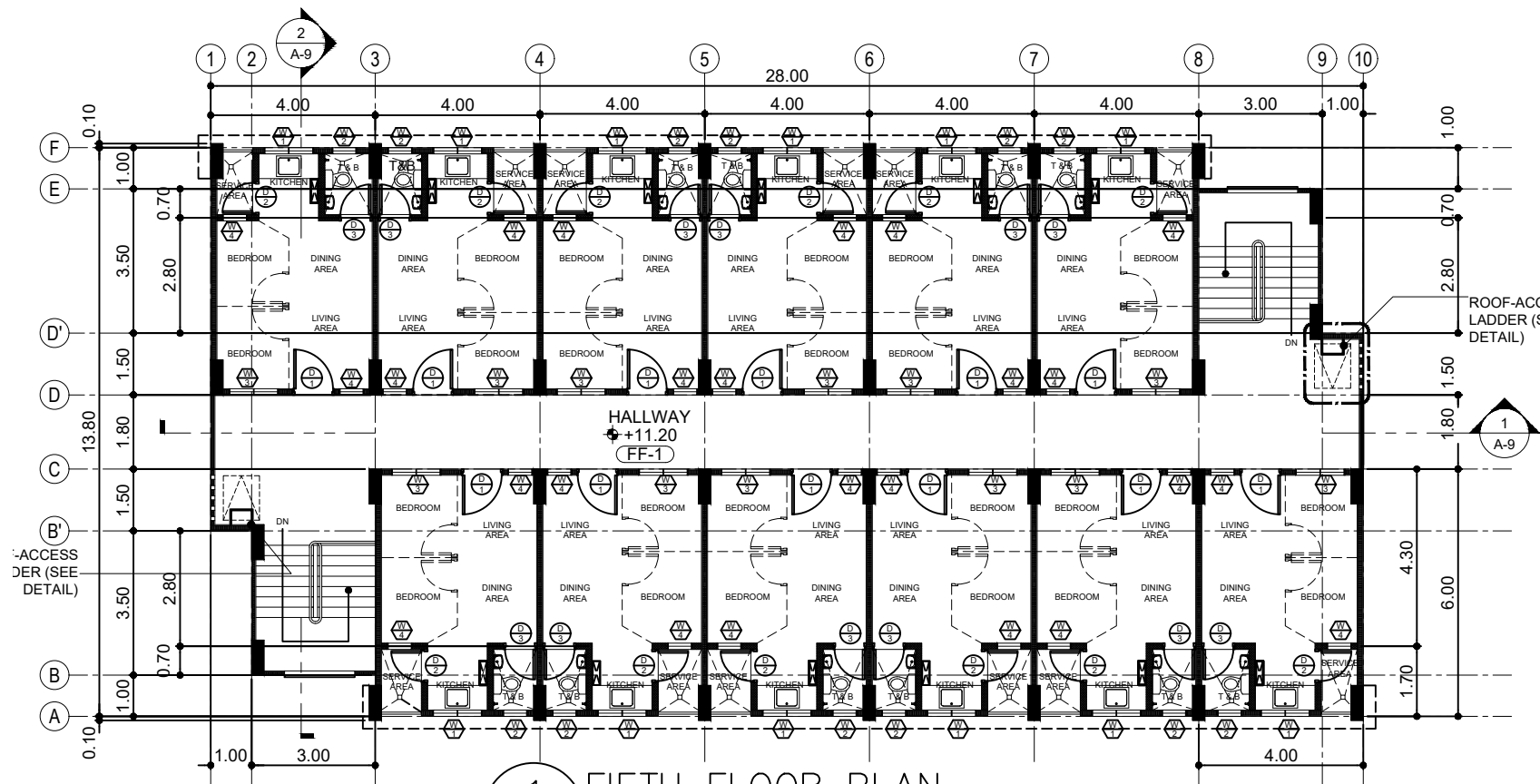
ARCHITECT:
DESIGNED BY:
DRAWN BY:
SHEET CONTENT:
REVISIONS:
REG No.:
PTR No.:

CHECKED BY:
DATE:
STANDARD DESIGNED PREPARED BY:
HOUSING TECHNOLOGY DEVELOPMENT OFFICE
SUBMITTED BY:
REVIEWED BY:
JUANCHO M. CORPUZ
DISTRICT MANAGER
MANAVA DISTRICT OFFICE

RECOMMENDING APPROVAL:
MARIA TERESA P. OBLIPIAS
REGIONAL MANAGER
NORTH SECTOR
MA. BENITA O. REGALA
GROUP MANGER
HSSG

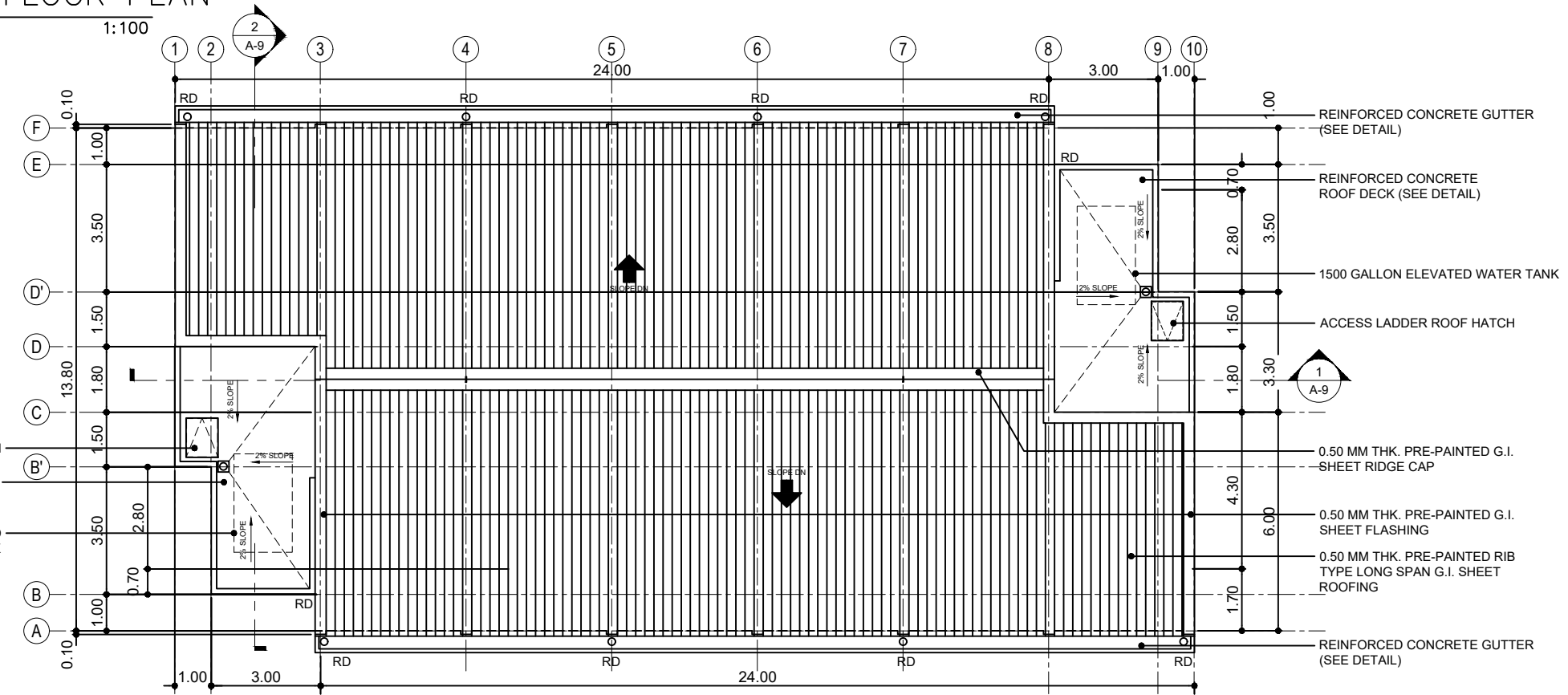
APPROVED BY:
MARCELINO P. ESCALADA, JR.
GENERAL MANAGER

SHEET NO.
A
03
16



1 FIFTH FLOOR PLAN
A/04 SCALE 1:100

LEGEND	
FLOOR FINISHES	
FF-1	CONCRETE TOPPING, SMOOTH FINISH
FF-2	300 MM X 300 MM VITRIFIED UNGLAZED CERAMIC TILES
SCHEDULE OF WALL FINISHES	
EXTERIOR: PLAIN CEMENT PLASTERED, PAINTED FINISH	
INTERIORS EXCEPT AT T&B: PLAIN CEMENT PLASTERED FINISH	
T&B: 5 LAYERS OF 300 MM X 300 MM GLAZED CERAMIC TILES FROM BOTTOM OF WALL, AND PLAIN CEMENT PLASTERED FINISH FOR REST OF WALL	



2 ROOF PLAN
A/04 SCALE 1:100



Office of the President
NATIONAL HOUSING AUTHORITY
Elliptical Road, Diliman, Quezon City
PROJECT TITLE:
**PROPOSED STANDARD 5-STOREY
LOW-RISE BUILDING & LAND DEVELOPMENT**
LOCATION:

ARCHITECT:
DESIGNED BY:
DRAWN BY:
SHEET CONTENT:
FIFTH FLOOR PLAN, ROOF PLAN
REVISIONS:
DATE:

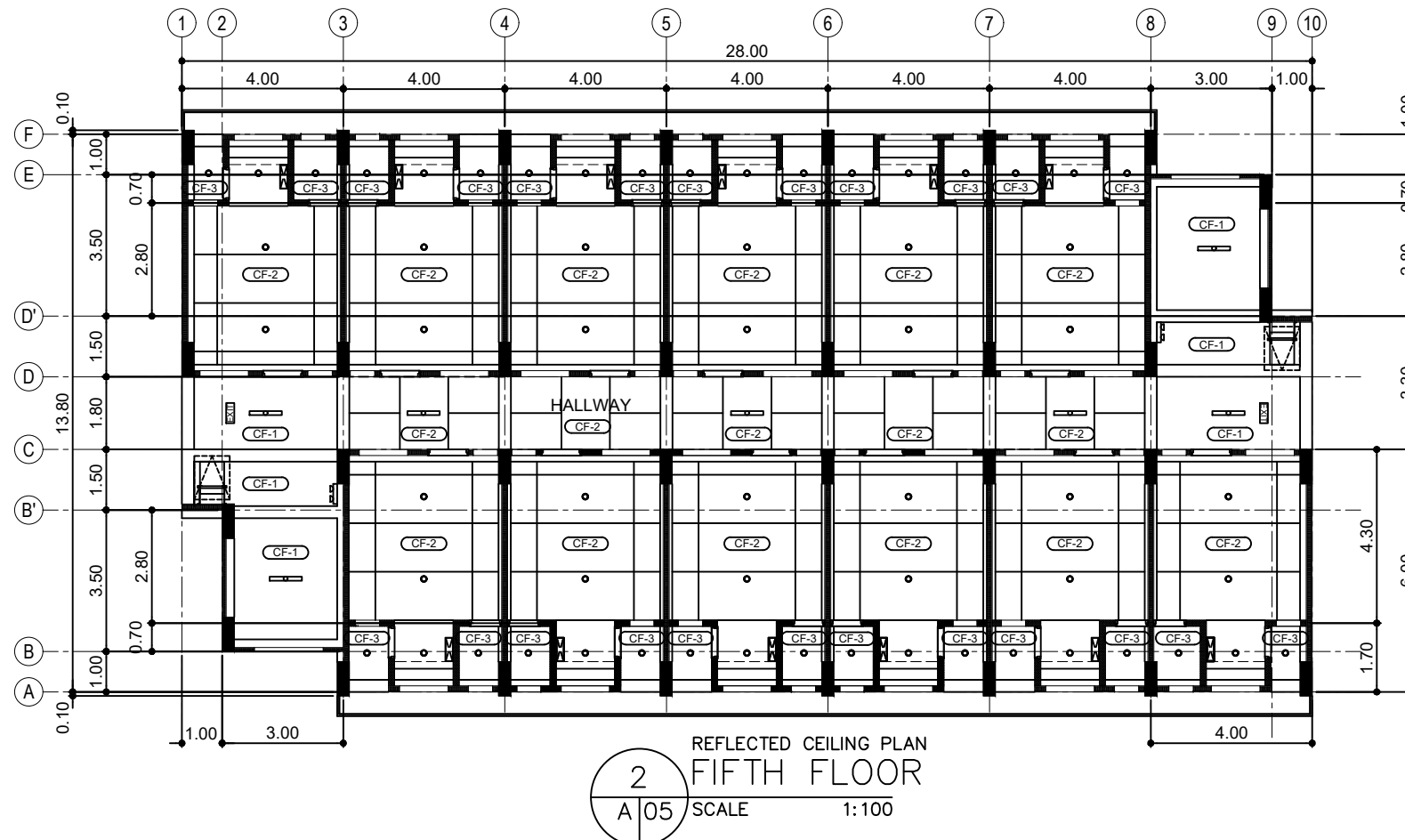
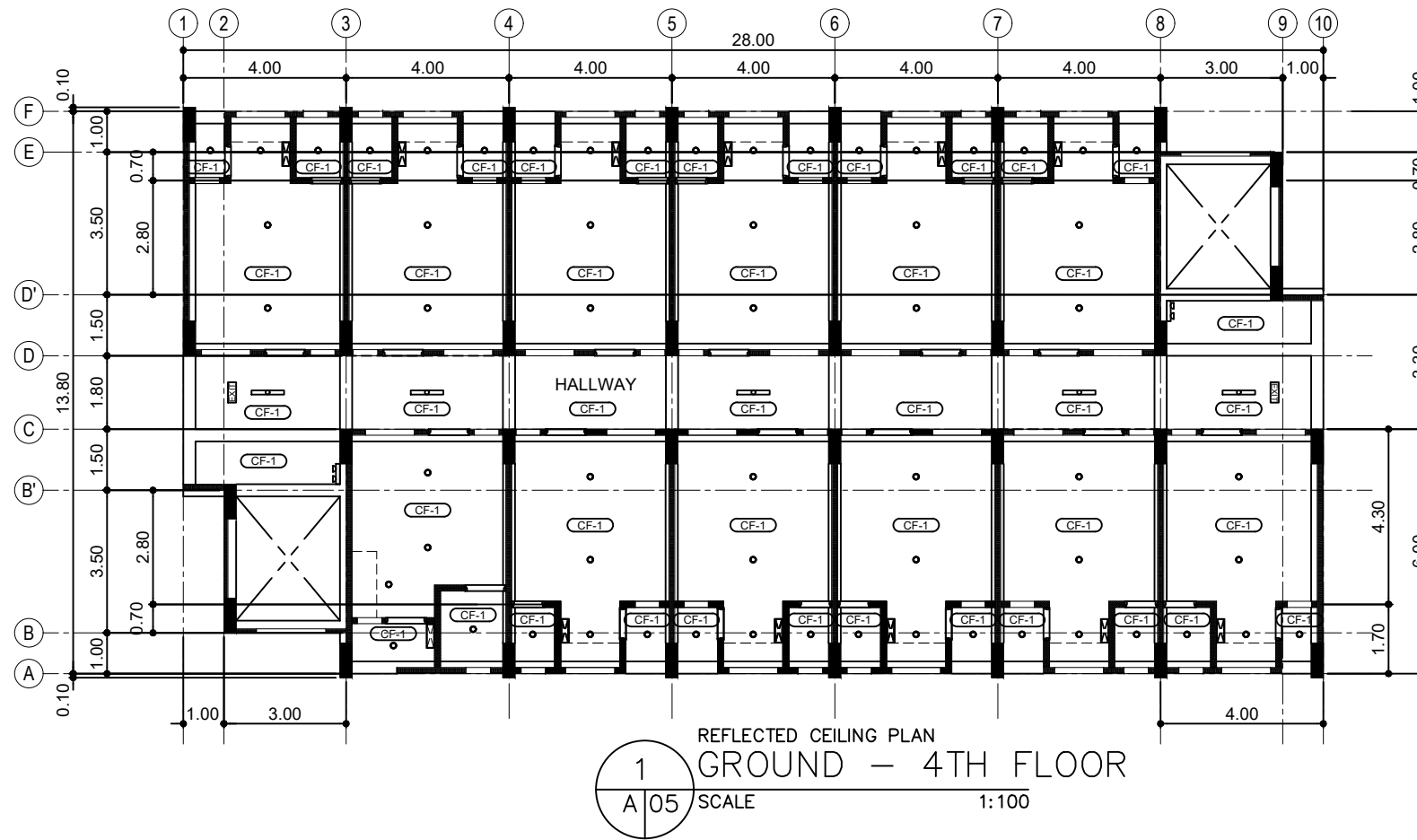
STANDARD DESIGNED PREPARED BY:
HOUSING TECHNOLOGY DEVELOPMENT OFFICE
SUBMITTED BY:
REVIEWED BY:
JUANCHO M. CORPUZ
DISTRICT MANAGER
MANAVA DISTRICT OFFICE
MAURA D. AGGARAO
PROGRAM MANAGER
PROGRAM OFFICE, NORTH SECTOR


RECOMMENDING APPROVAL:
MARIA TERESA P. OBLIPIAS
REGIONAL MANAGER
NORTH SECTOR
MA. BENITA O. REGALA
GROUP MANGER
HSSG

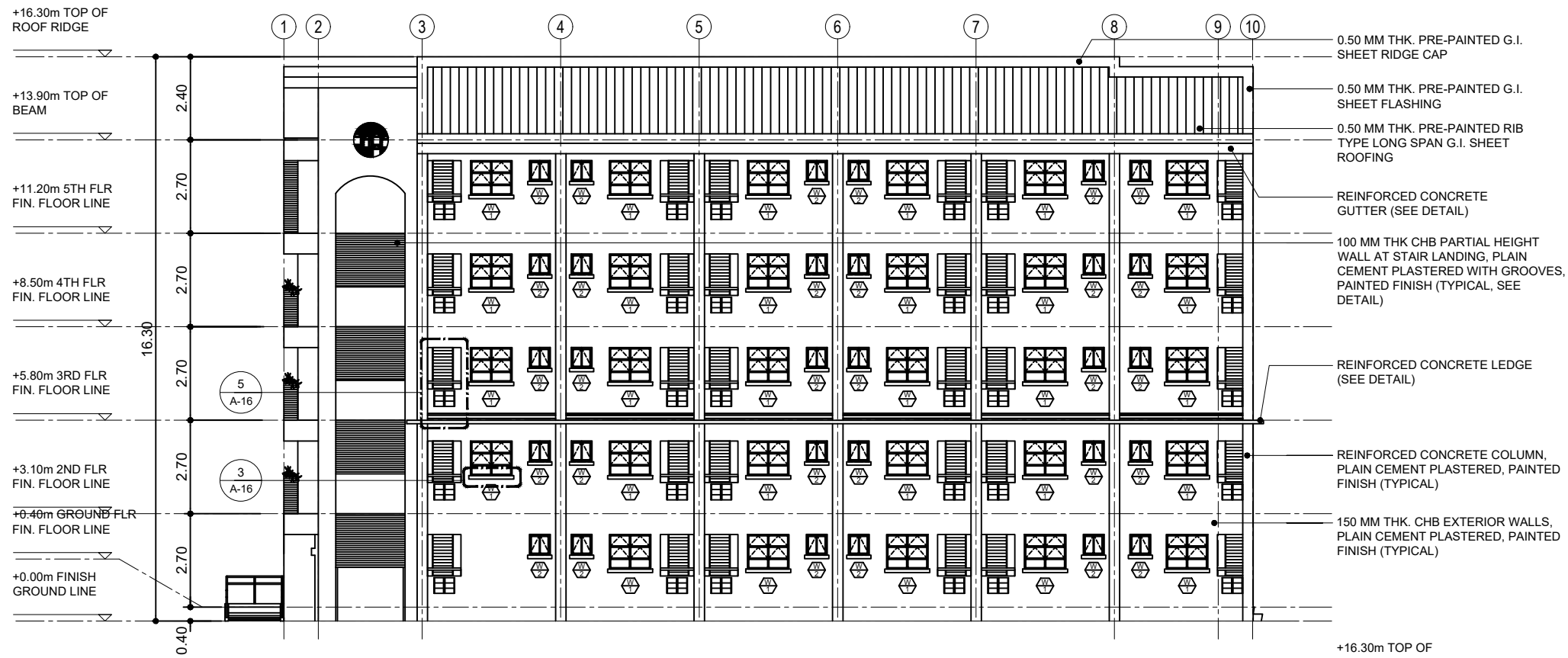
APPROVED BY:
MARCELINO P. ESCALADA, JR.
GENERAL MANAGER

SHEET NO.
A
04
16

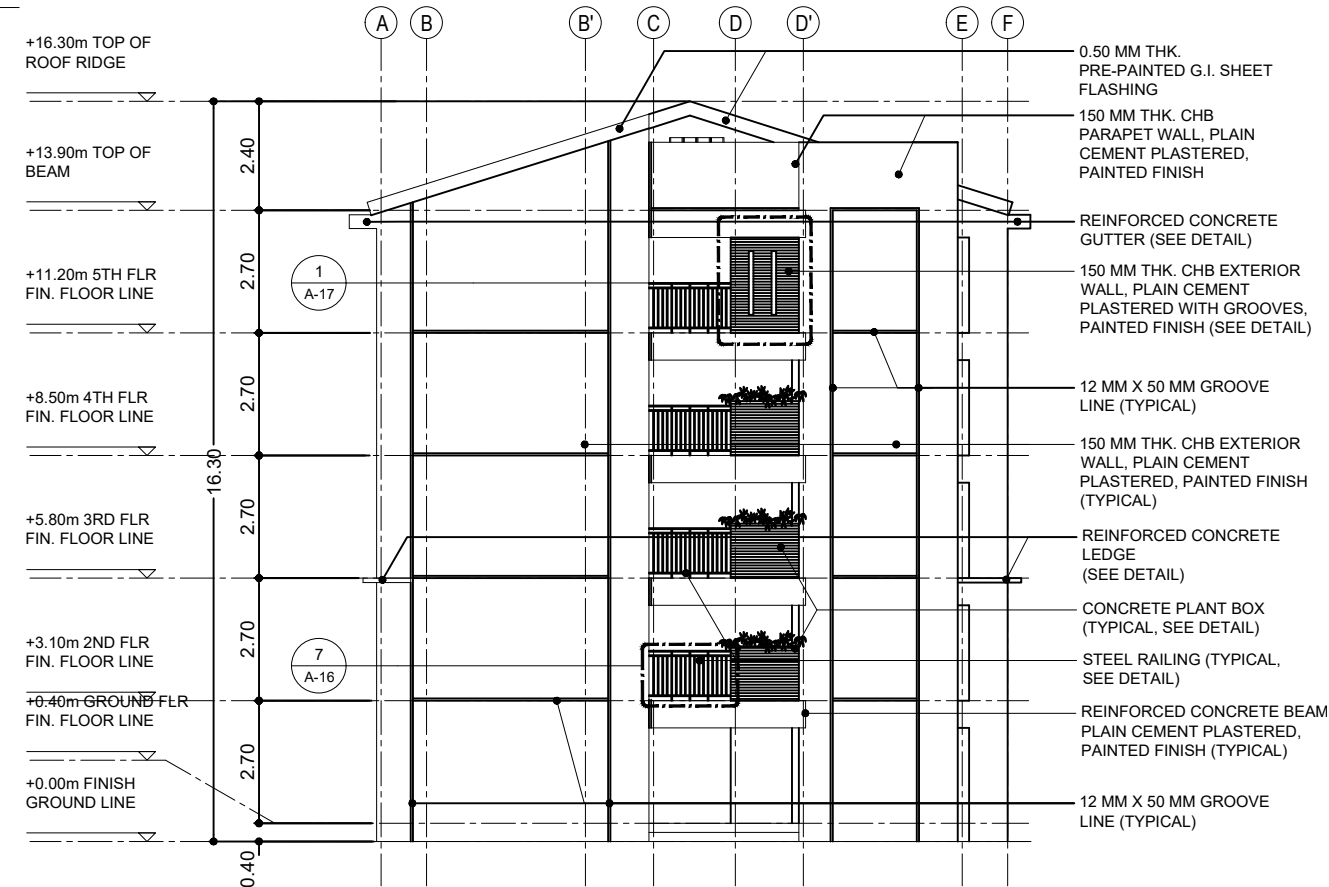
LEGEND	
CEILING FINISHES	
CF-1	PLAIN CEMENT PLASTERED SLAB SOFFIT
CF-2	12 MM THK. ORDINARY PLYWOOD ON 50 MM x 50 MM SOLID K/D WOOD CEILING JOISTS @ 600 MM O.C., PAINTED FINISH, LAYOUT PANELS AS SHOWN, CEILING HEIGHT = AT 2.65 M ABOVE 5TH FLOOR FFL
CF-3	12 MM THK. MARINE PLYWOOD ON 50 MM x 50 MM SOLID K/D WOOD CEILING JOISTS @ 600 MM O.C., PAINTED FINISH, LAYOUT PANELS AS SHOWN, CEILING HEIGHT = AT 2.65 M ABOVE 5TH FLOOR FFL
CEILING FIXTURES	
●	SURFACE-MOUNTED DOWNLIGHT
▭	SURFACE-MOUNTED TROFFER
EXIT	EXIT LIGHT
☐	EMERGENCY LIGHT



 NATIONAL HOUSING AUTHORITY Elliptical Road, Diliman, Quezon City	Office of the President	ARCHITECT:	DESIGNED BY:	CHECKED BY:	STANDARD DESIGNED PREPARED BY:	APPROVED BY:	SHEET NO.		
	PROJECT TITLE:		DRAWN BY:	DATE:	HOUSING TECHNOLOGY DEVELOPMENT OFFICE		A 05 16		
	PROPOSED STANDARD 5-STORY LOW-RISE BUILDING & LAND DEVELOPMENT		SHEET CONTENT:		SUBMITTED BY:	RECOMMENDING APPROVAL:			
	LOCATION:		REFLECTED CEILING PLAN (GRND-FIFTH)	REVISIONS:	DATE:	REVIEWED BY:			
REG No.:	DATE:				JUANCHO M. CORPUZ DISTRICT MANAGER MANAVA DISTRICT OFFICE	MAURA D. AGGARAO PROGRAM MANAGER PROGRAM OFFICE, NORTH SECTOR	MARIA TERESA P. OBLIPIAS REGIONAL MANAGER NORTH SECTOR	MA. BENITA O. REGALA GROUP MANAGER HSSG	MARCELINO P. ESCALADA, JR. GENERAL MANAGER

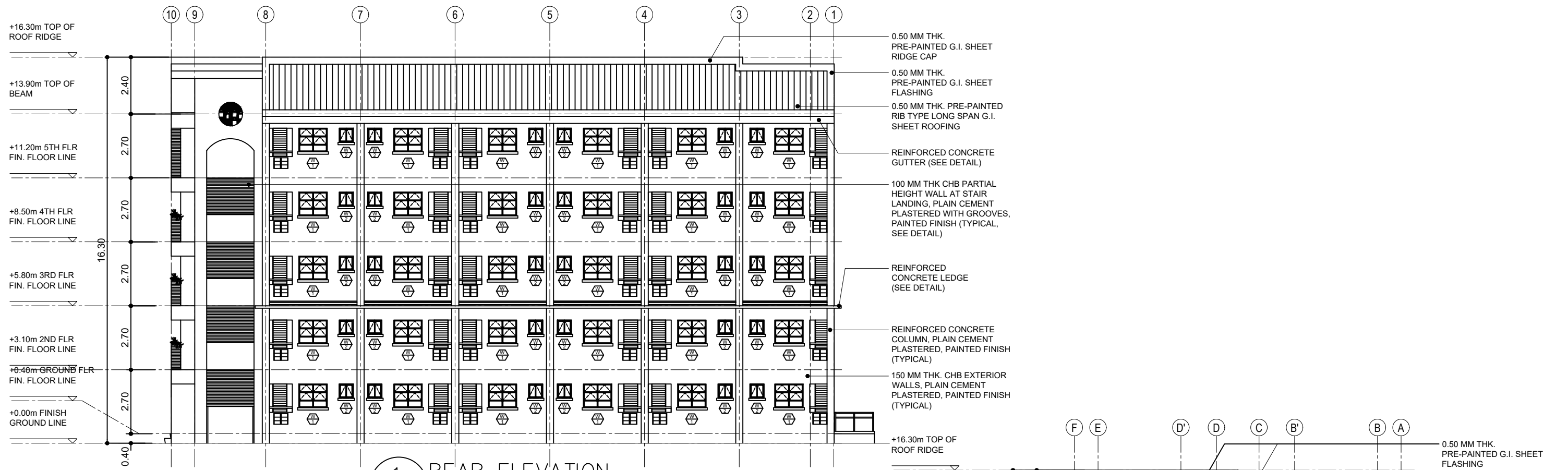


1 FRONT ELEVATION
A/06 SCALE 1:100

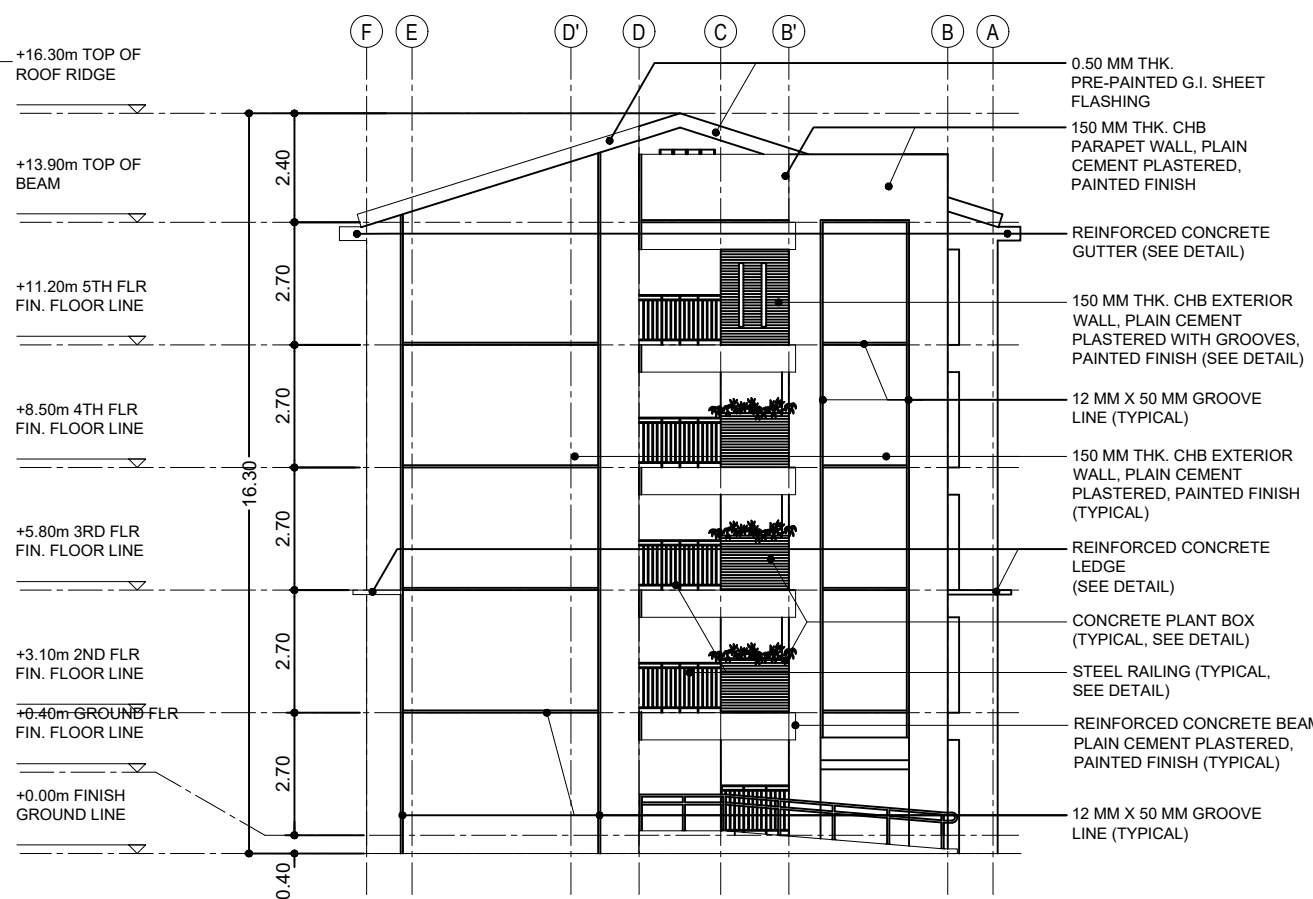


2 RIGHT SIDE ELEVATION
A/06 SCALE 1:100

<p>Office of the President NATIONAL HOUSING AUTHORITY Elliptical Road, Diliman, Quezon City</p> <p>PROJECT TITLE: PROPOSED STANDARD 5-STORY LOW-RISE BUILDING & LAND DEVELOPMENT</p> <p>LOCATION:</p>	ARCHITECT: 	DESIGNED BY: 	CHECKED BY: 	STANDARD DESIGNED PREPARED BY: 	APPROVED BY: 	SHEET NO. 	
	DRAWN BY: 	SHEET CONTENT: 	HOUSING TECHNOLOGY DEVELOPMENT OFFICE 	SUBMITTED BY: 	REVIEWED BY: 	RECOMMENDING APPROVAL: 	
	REVISIONS: 	DATE: 	JUANCHO M. CORPUZ DISTRICT MANAGER MANAVA DISTRICT OFFICE 	MAURA D. AGGARAO PROGRAM MANAGER PROGRAM OFFICE, NORTH SECTOR 	MARIA TERESA P. OBLIPIAS REGIONAL MANAGER NORTH SECTOR 	MA. BENITA O. REGALA GROUP MANGER HSSG 	MARCELINO P. ESCALADA, JR. GENERAL MANAGER
	REG No.: PTR No.: 	DATE: PLACE: 					A 06 16

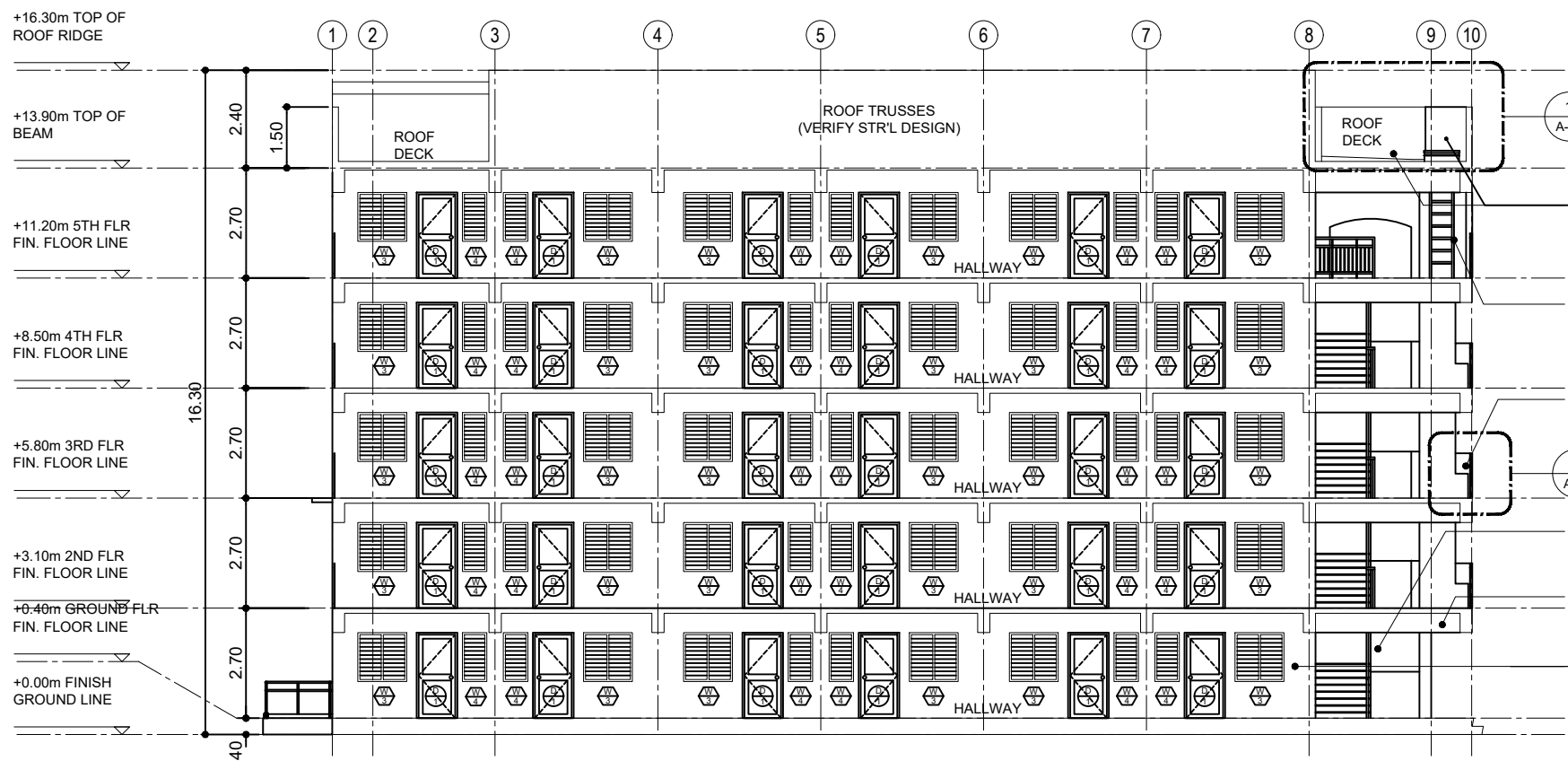


1 REAR ELEVATION
A/07 SCALE 1:100

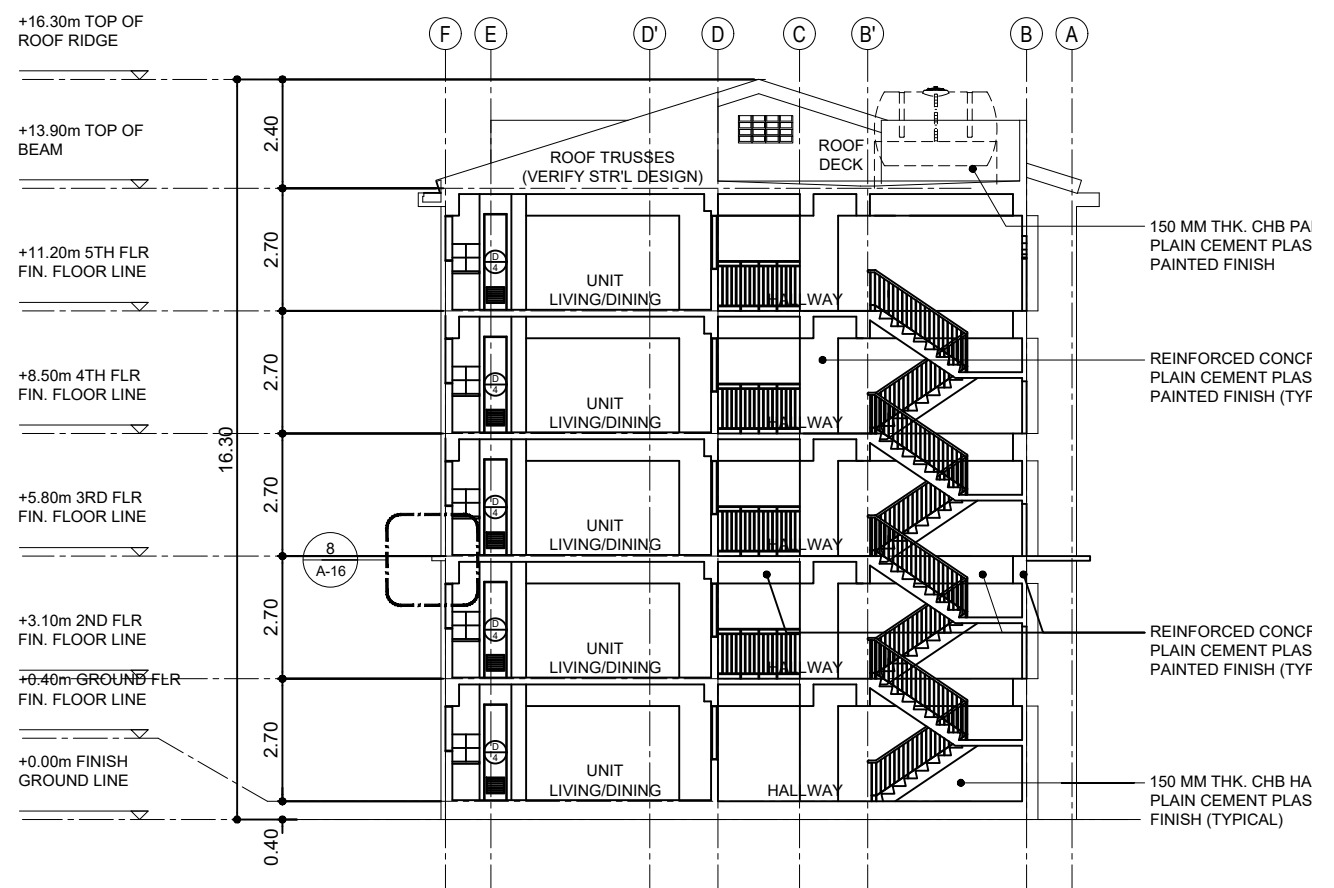


2 LEFT SIDE ELEVATION
A/07 SCALE 1:100


	Office of the President NATIONAL HOUSING AUTHORITY Elliptical Road, Diliman, Quezon City	ARCHITECT: DESIGNED BY: DRAWN BY: SHEET CONTENT: REAR ELEVATION, LEFT SIDE ELEVATION REVISIONS: DATE:	CHECKED BY: DATE:	STANDARD DESIGNED PREPARED BY: HOUSING TECHNOLOGY DEVELOPMENT OFFICE SUBMITTED BY: REVIEWED BY: RECOMMENDING APPROVAL:	APPROVED BY: 	SHEET NO. A 07 16	
	PROJECT TITLE: PROPOSED STANDARD 5-STORY LOW-RISE BUILDING & LAND DEVELOPMENT	REG No.: PTR No.:	DATE: PLACE:	JUANCHO M. CORPUZ DISTRICT MANAGER MANAVA DISTRICT OFFICE	MAURA D. AGGARAO PROGRAM MANAGER PROGRAM OFFICE, NORTH SECTOR	MARIA TERESA P. OBLIPIAS REGIONAL MANAGER NORTH SECTOR	MA. BENITA O. REGALA GROUP MANAGER HSSG
	LOCATION:	MARCELINO P. ESCALADA, JR. GENERAL MANAGER					

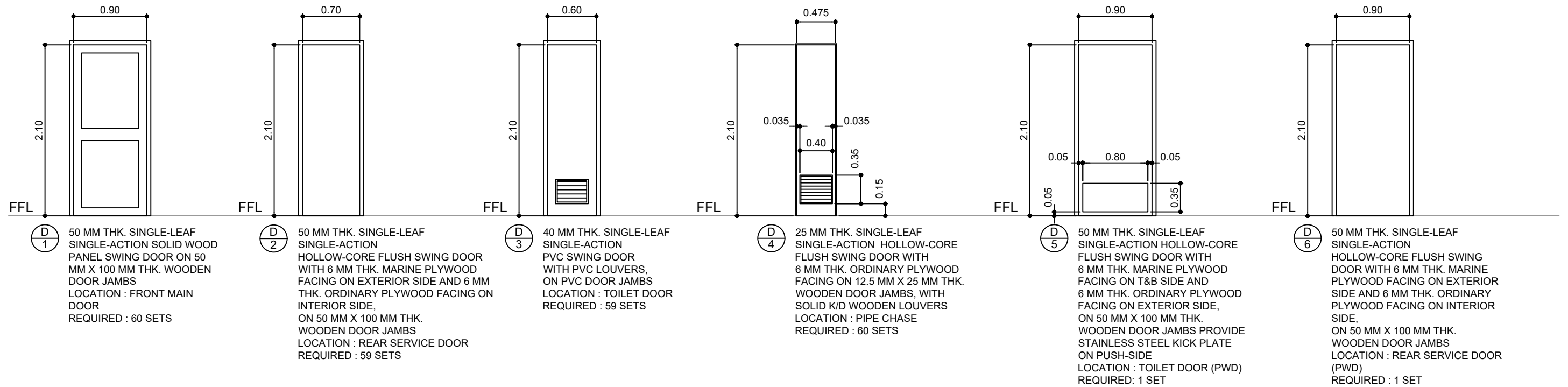


1 LONGITUDINAL SECTION
A/08 SCALE 1:100

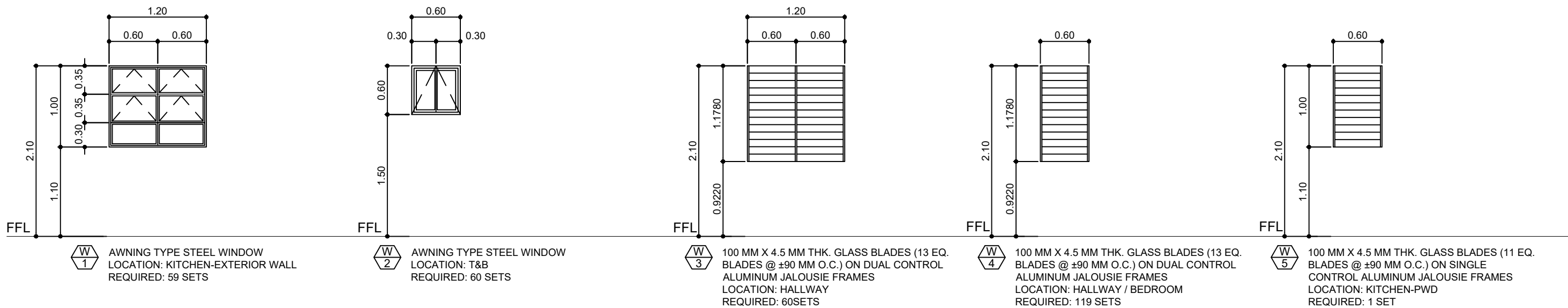


2 CROSS SECTION
A/08 SCALE 1:100

 <p>Office of the President NATIONAL HOUSING AUTHORITY Elliptical Road, Diliman, Quezon City</p>	ARCHITECT: DESIGNED BY: CHECKED BY: DRAWN BY: DATE: SHEET CONTENT: LONGITUDINAL SECTION, CROSS SECTION REVISIONS: DATE:	STANDARD DESIGNED PREPARED BY: HOUSING TECHNOLOGY DEVELOPMENT OFFICE SUBMITTED BY: REVIEWED BY: RECOMMENDING APPROVAL:	APPROVED BY:	SHEET NO. A 08 16			
	PROJECT TITLE: PROPOSED STANDARD 5-STORY LOW-RISE BUILDING & LAND DEVELOPMENT LOCATION:	REG No.: PTR No.:	DATE: PLACE:	JUANCHO M. CORPUZ DISTRICT MANAGER MANAVA DISTRICT OFFICE	MAURA D. AGGARAO PROGRAM MANAGER PROGRAM OFFICE, NORTH SECTOR	MARIA TERESA P. OBLIPIAS REGIONAL MANAGER NORTH SECTOR	MA. BENITA O. REGALA GROUP MANGER HSSG

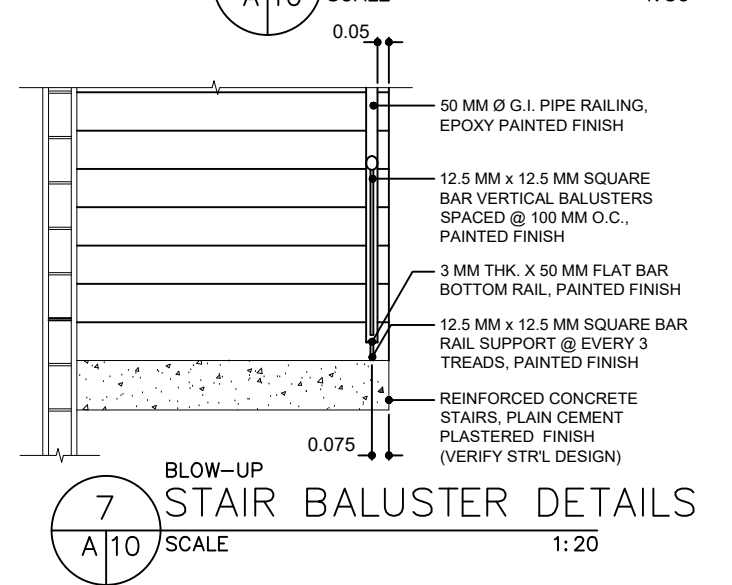
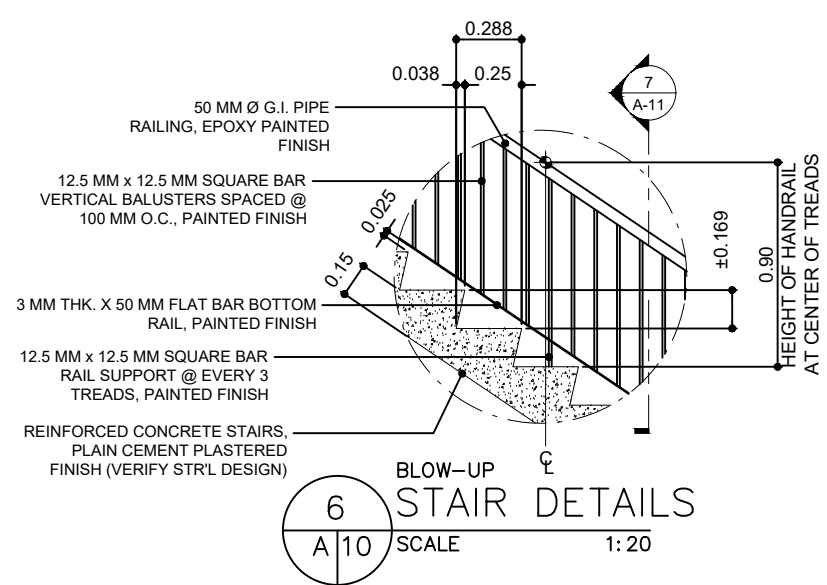
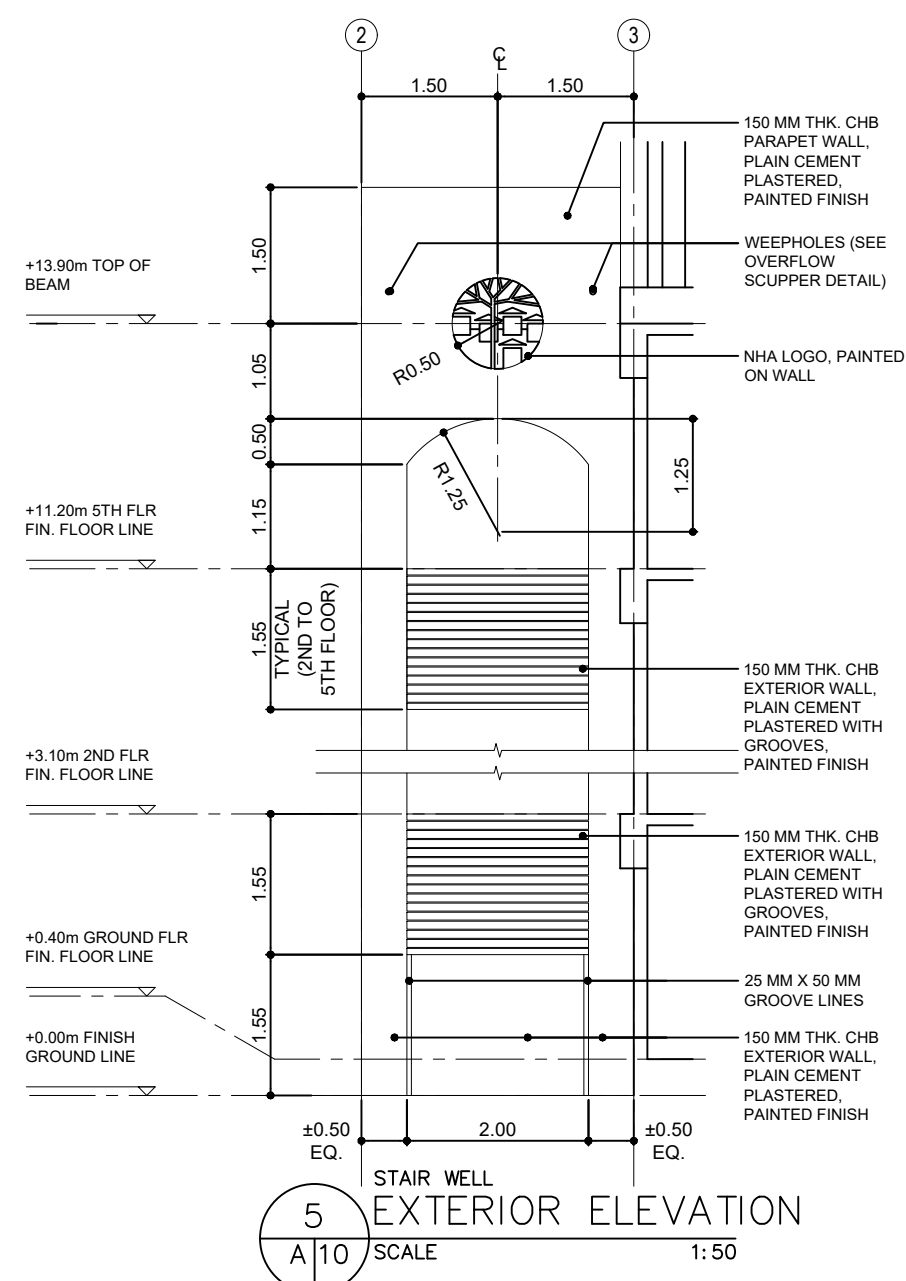
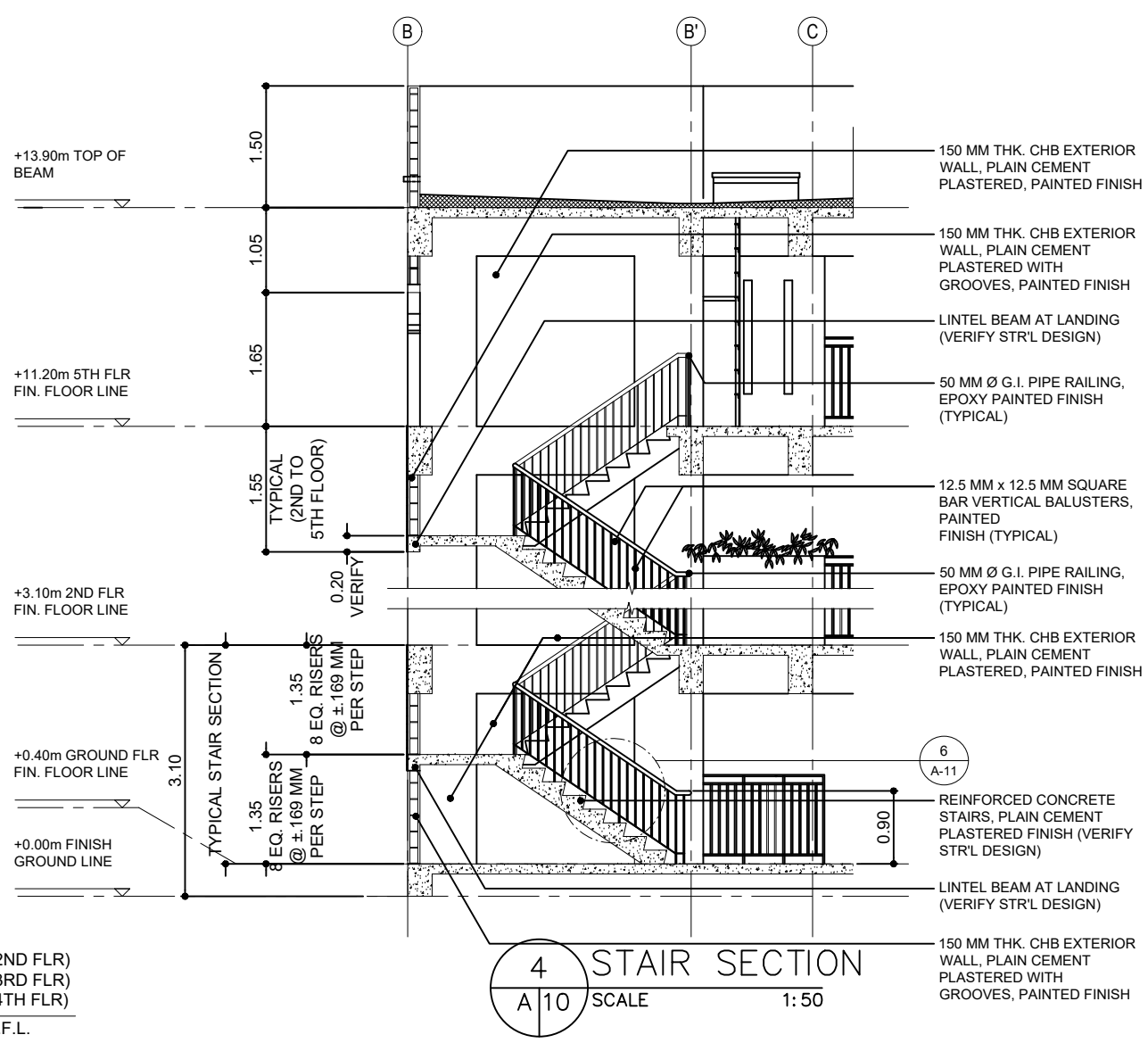
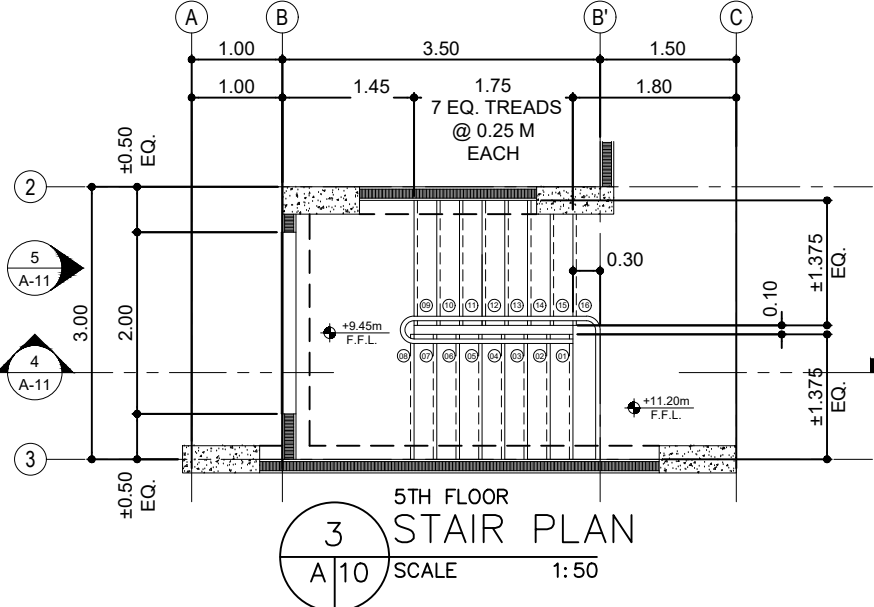
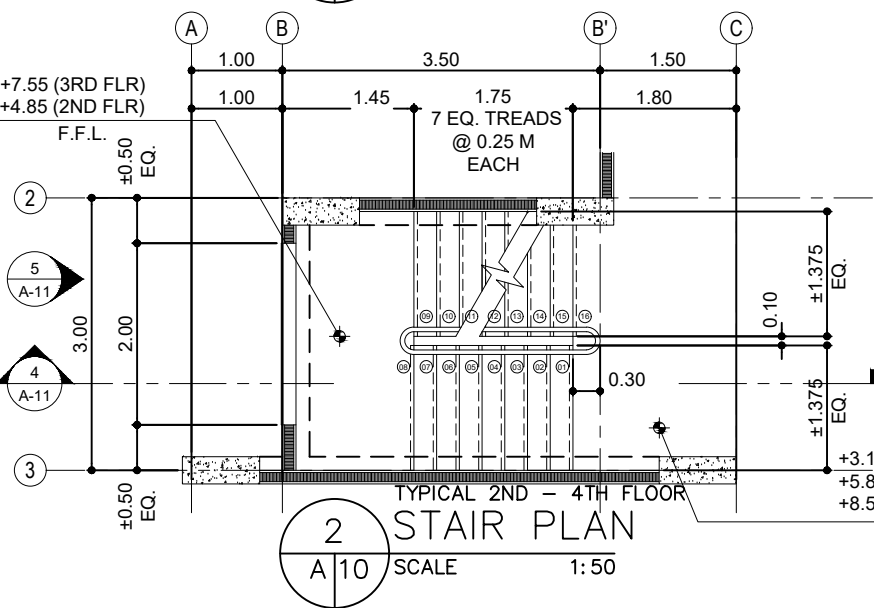
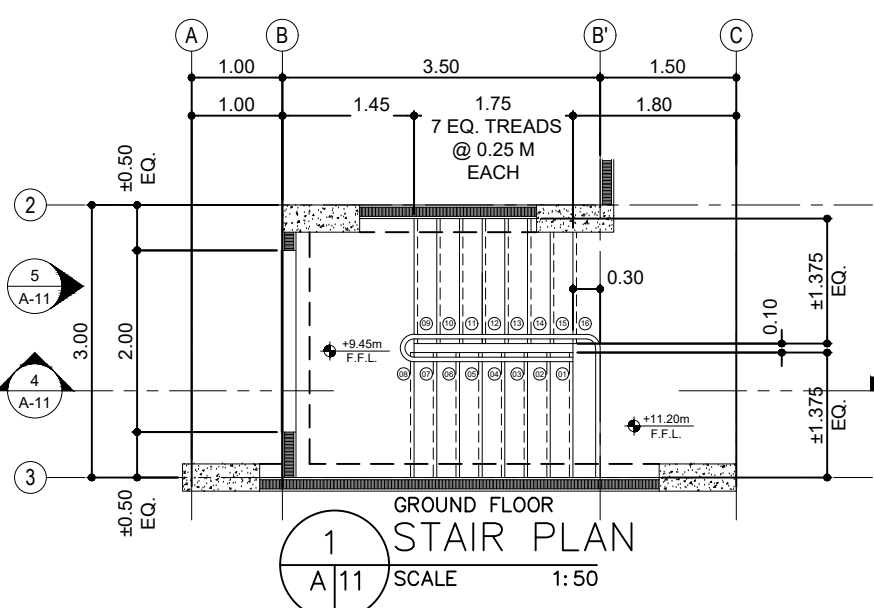


1 SCHEDULE OF DOORS
A/09 SCALE 1:30



2 SCHEDULE OF WINDOWS
A/09 SCALE 1:30

<p>Office of the President NATIONAL HOUSING AUTHORITY Elliptical Road, Diliman, Quezon City</p> <p>PROJECT TITLE: PROPOSED STANDARD 5-STOREY LOW-RISE BUILDING & LAND DEVELOPMENT</p> <p>LOCATION:</p>	ARCHITECT: 	DESIGNED BY: 	CHECKED BY: 	STANDARD DESIGNED PREPARED BY: 	APPROVED BY: 	SHEET NO.
	REG No.: PTR No.:	DATE: PLACE:	DRAWN BY: SHEET CONTENT: SCHEDULE OF DOORS AND WINDOWS REVISIONS: 	DATE: 	HOUSING TECHNOLOGY DEVELOPMENT OFFICE SUBMITTED BY: 	REVIEWED BY:
		JUANCHO M. CORPUZ DISTRICT MANAGER MANAVA DISTRICT OFFICE	MAURA D. AGGARAO PROGRAM MANAGER PROGRAM OFFICE, NORTH SECTOR	MARIA TERESA P. OBLIPIAS REGIONAL MANAGER NORTH SECTOR	MA. BENITA O. REGALA GROUP MANGER HSSG	MARCELINO P. ESCALADA, JR. GENERAL MANAGER



Office of the President
NATIONAL HOUSING AUTHORITY
 Elliptical Road, Diliman, Quezon City
 PROJECT TITLE:
**PROPOSED STANDARD 5-STOREY
 LOW-RISE BUILDING & LAND DEVELOPMENT**
 LOCATION:

ARCHITECT:
 DESIGNED BY:
 DRAWN BY:
 SHEET CONTENT:
**STAIR DETAILS, STAIR SECTION, STAIR
 ELEVATION, BALUSTER DETAILS**
 REVISIONS:
 DATE:

STANDARD DESIGNED PREPARED BY:
 HOUSING TECHNOLOGY DEVELOPMENT OFFICE
 SUBMITTED BY:
 REVIEWED BY:
 RECOMMENDING APPROVAL:

JUANCHO M. CORPUZ
 DISTRICT MANAGER
 MANAVA DISTRICT OFFICE

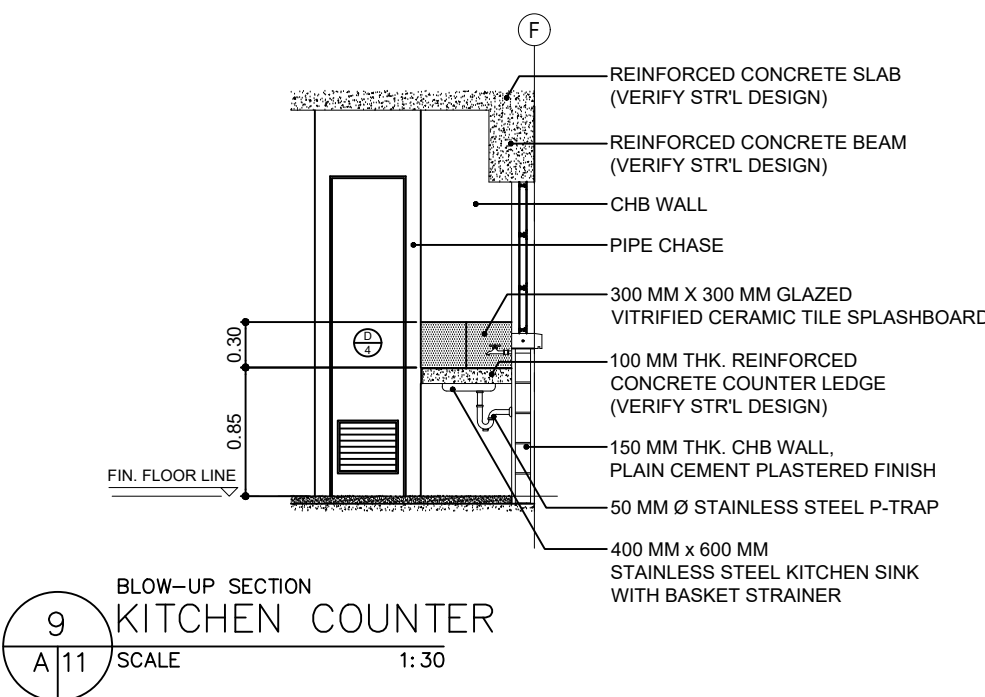
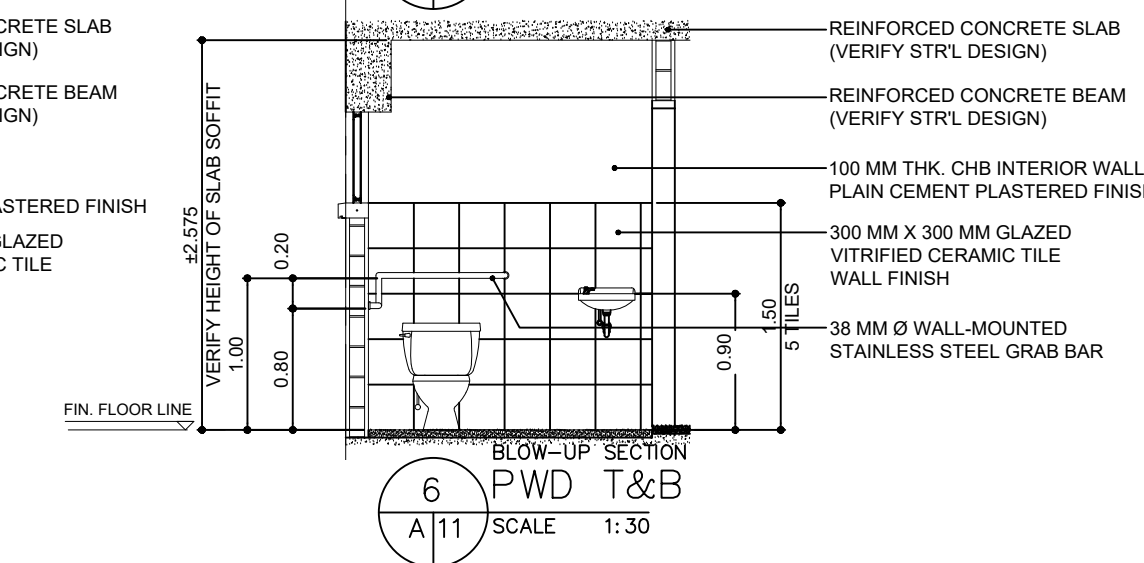
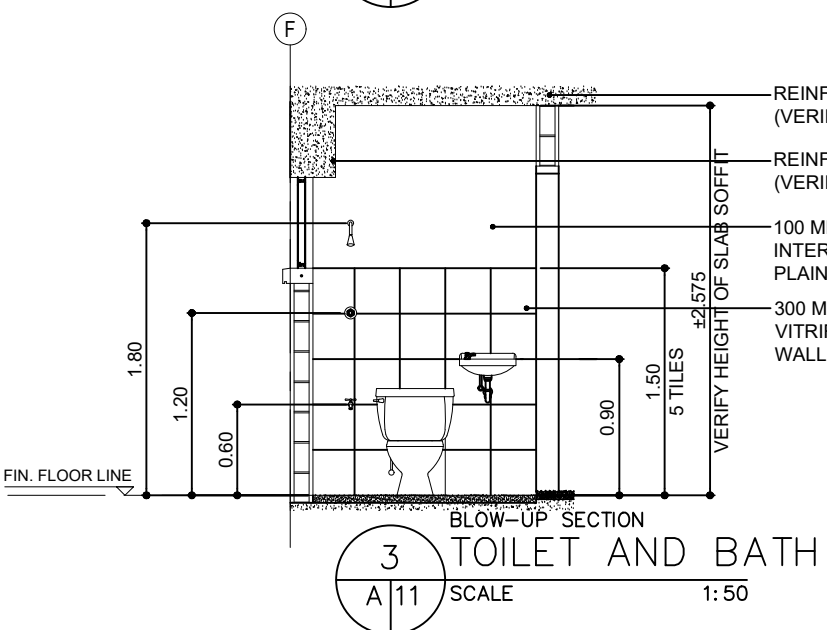
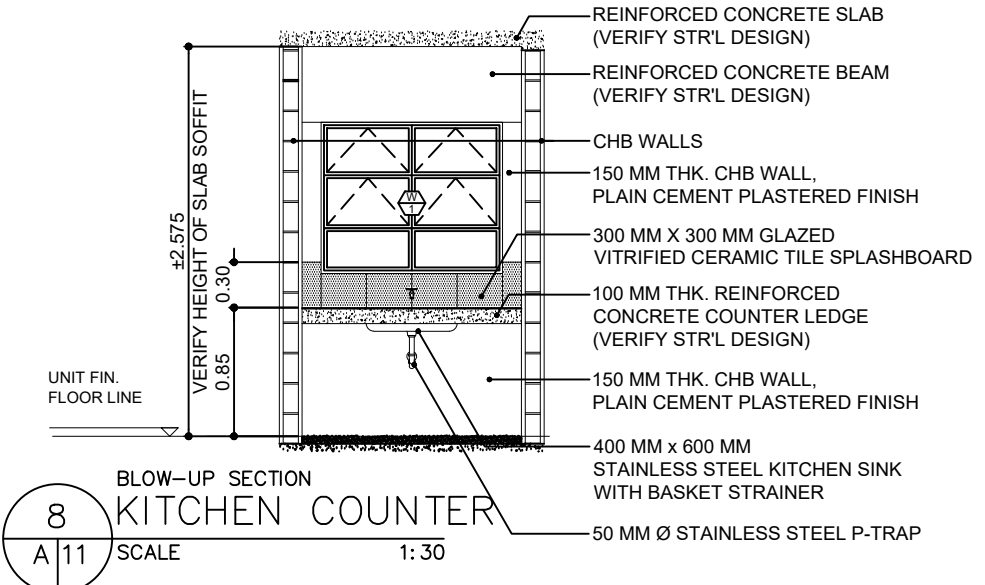
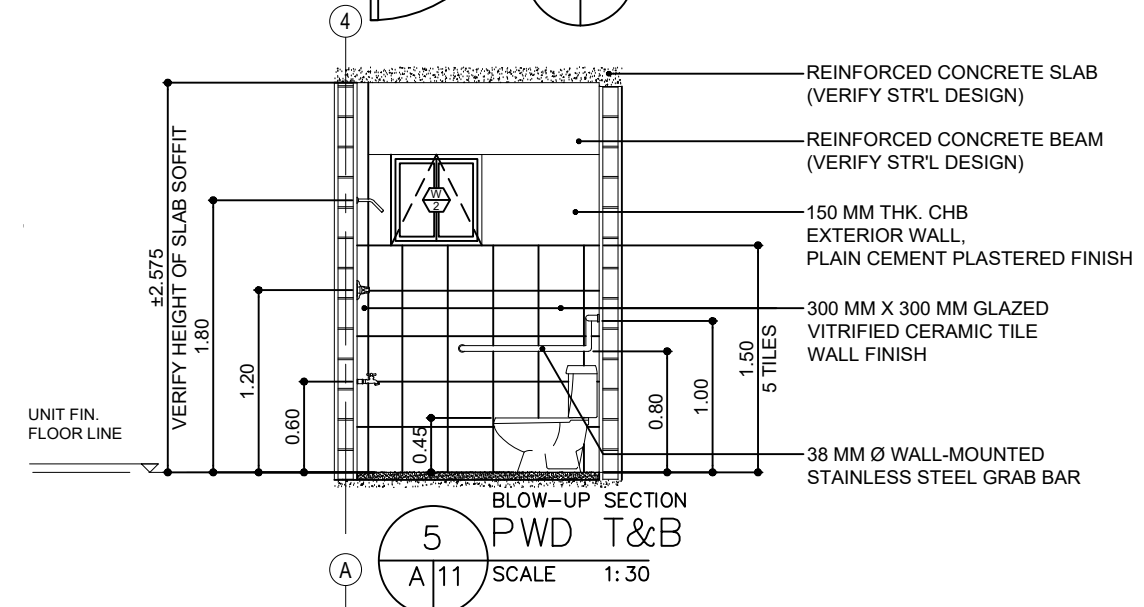
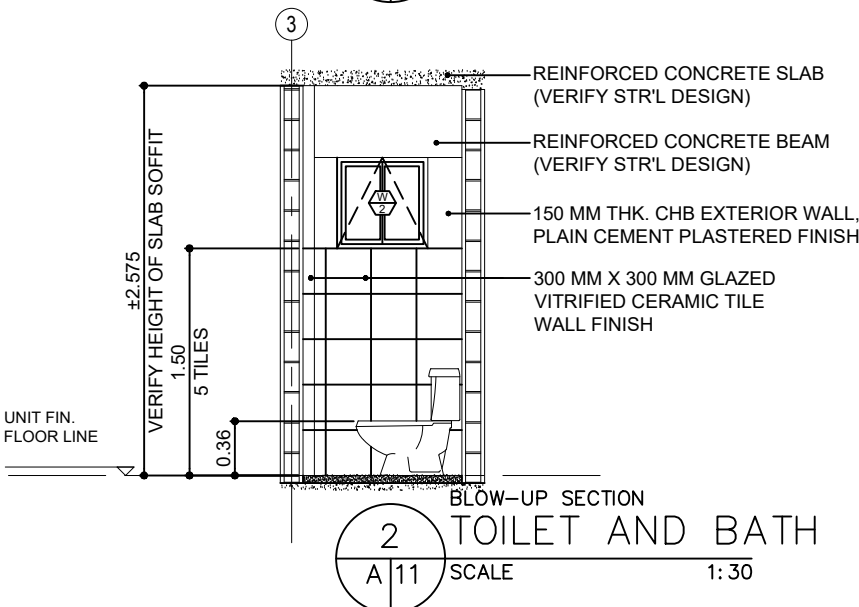
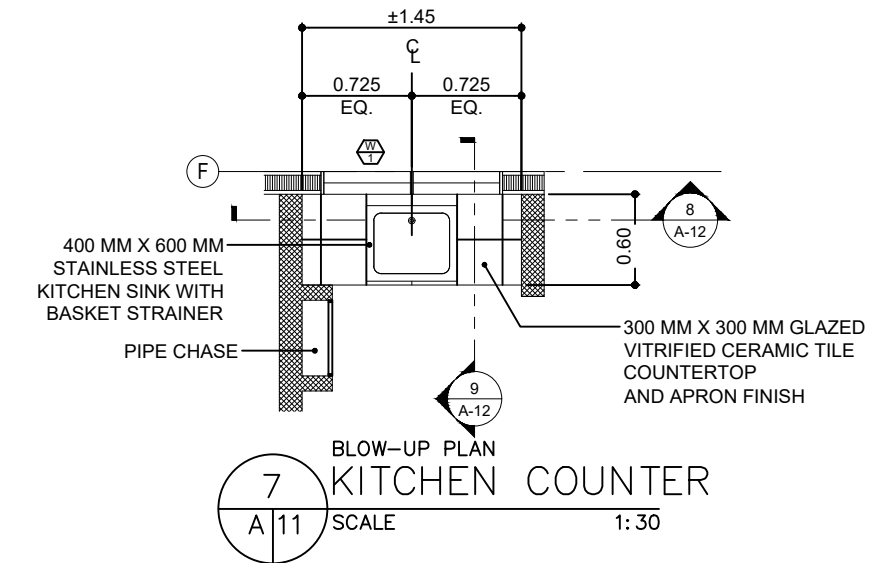
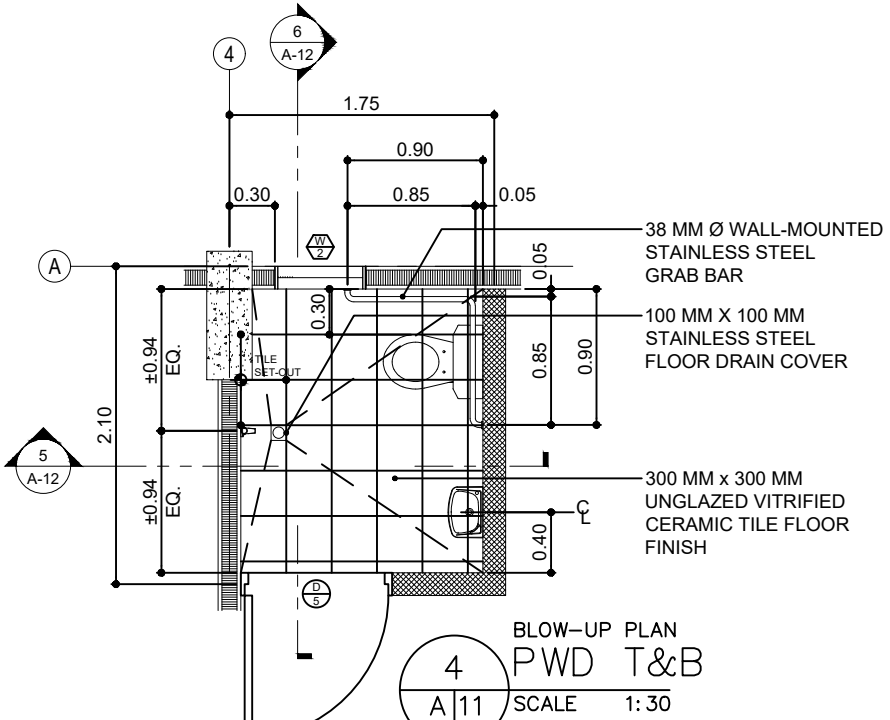
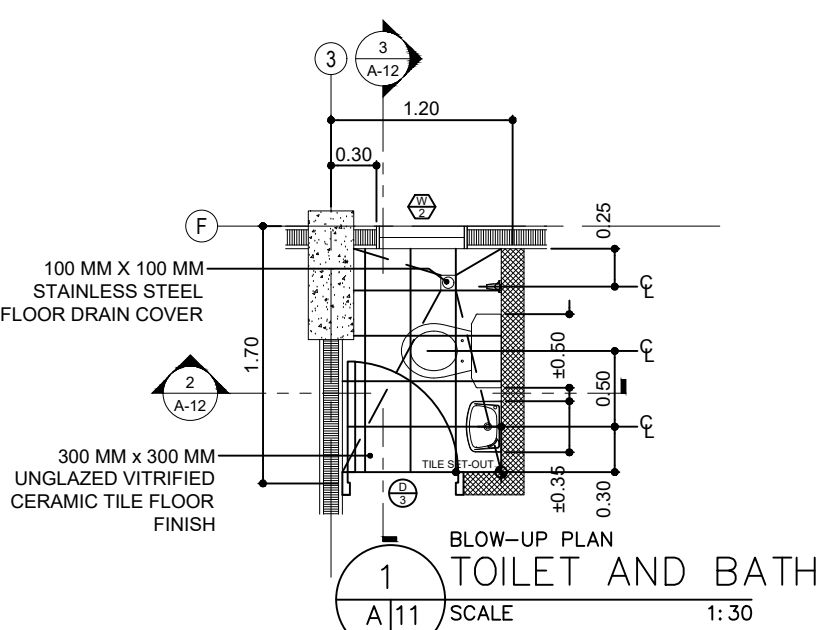
MAURA D. AGGARAO
 PROGRAM MANAGER
 PROGRAM OFFICE, NORTH SECTOR

MARIA TERESA P. OBLIPIAS
 REGIONAL MANAGER
 NORTH SECTOR

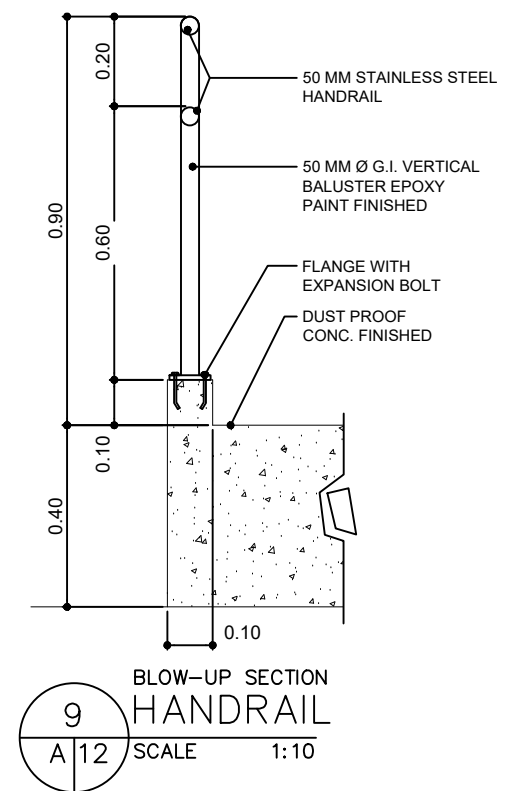
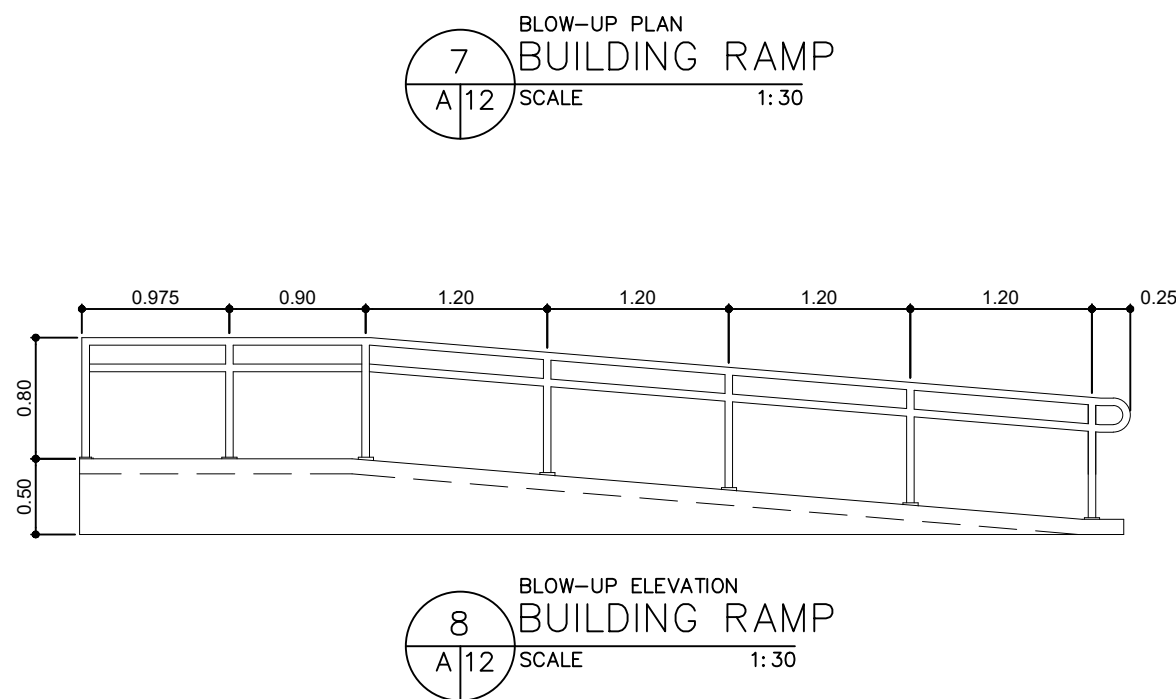
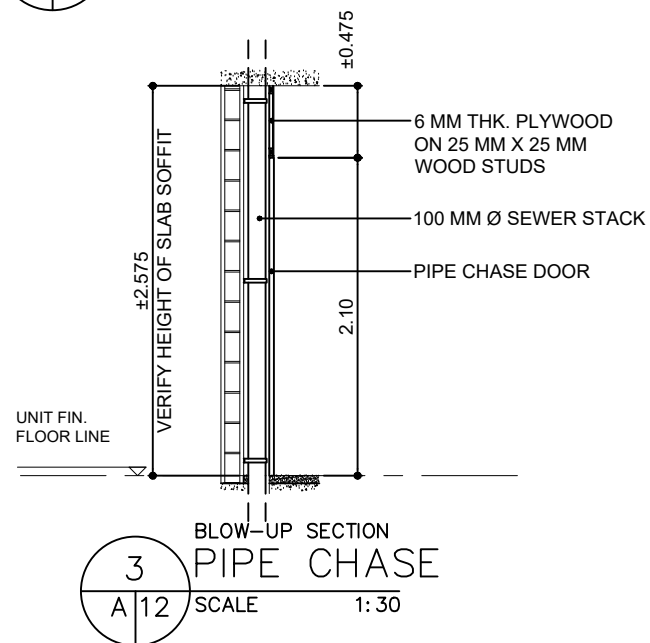
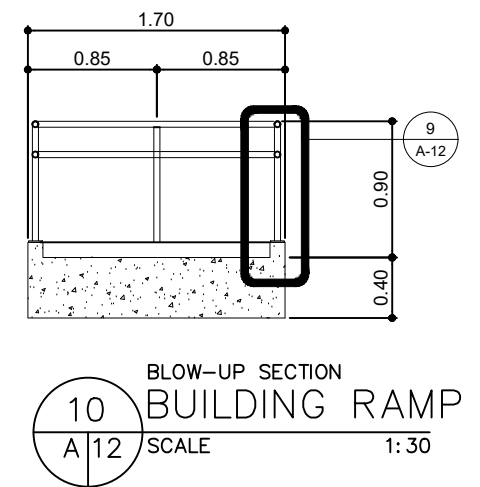
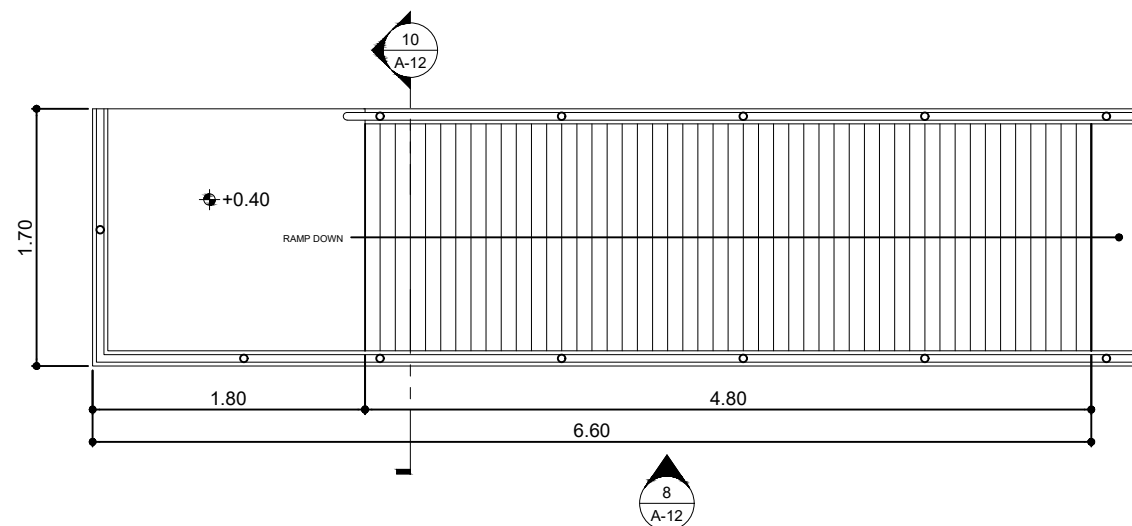
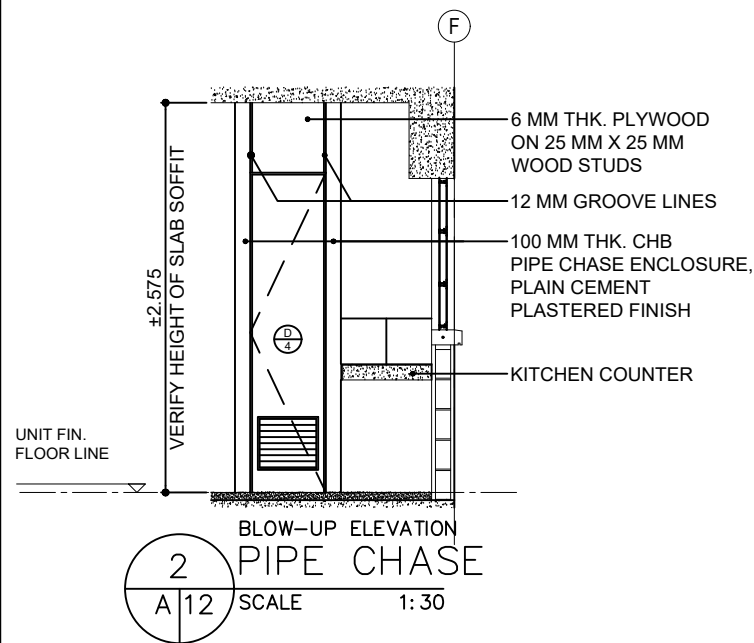
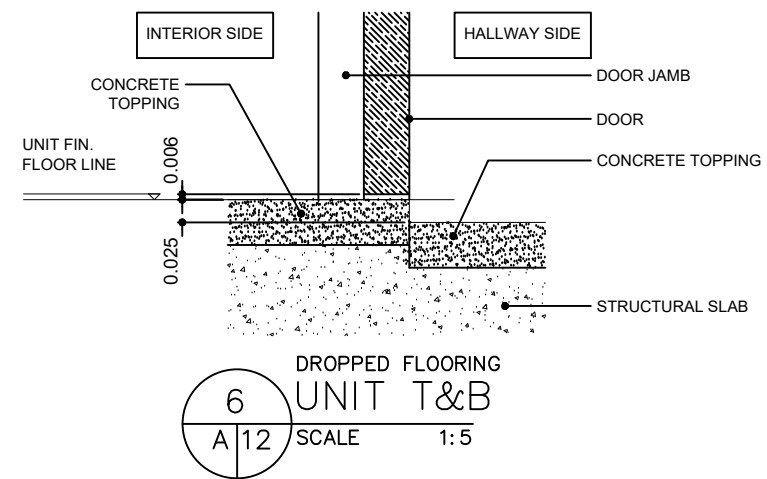
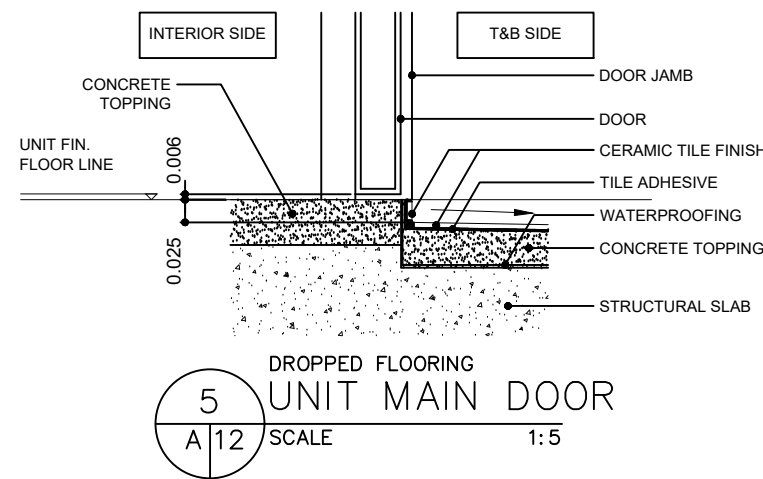
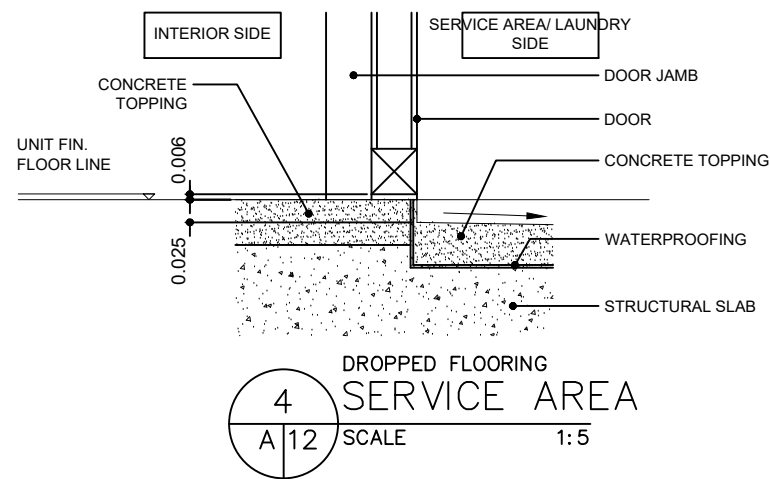
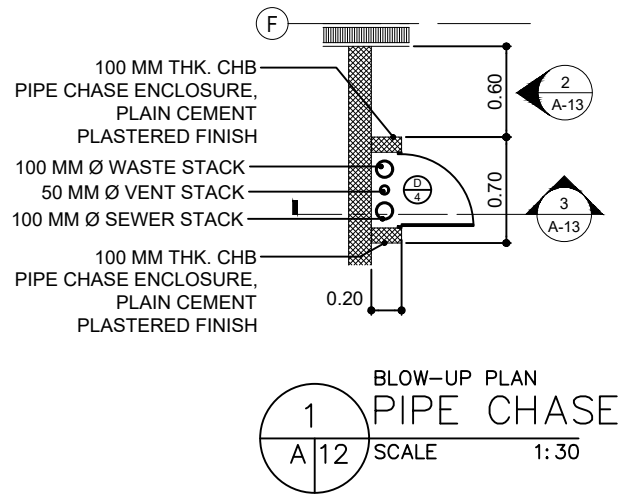
MA. BENITA O. REGALA
 GROUP MANAGER
 HSSG

APPROVED BY:
 MARCELINO P. ESCALADA, JR.
 GENERAL MANAGER

SHEET NO.
 A
 10
 16



<p>Office of the President NATIONAL HOUSING AUTHORITY Elliptical Road, Diliman, Quezon City</p> <p>PROJECT TITLE: PROPOSED STANDARD 5-STOREY LOW-RISE BUILDING & LAND DEVELOPMENT</p> <p>LOCATION:</p>	ARCHITECT: 	DESIGNED BY: 	CHECKED BY: 	STANDARD DESIGNED PREPARED BY: 	APPROVED BY: 	SHEET NO. 	
	REG No.: PTR No.:	DRAWN BY: SHEET CONTENT: T&B DETAILS, PWD T&B DETAILS, KITCHEN DETAILS REVISIONS: 	HOUSING TECHNOLOGY DEVELOPMENT OFFICE SUBMITTED BY: 	DATE: 	REVIEWED BY: 		
	DATE: PLACE:		MAURICIO M. CORPUZ DISTRICT MANAGER MANAVA DISTRICT OFFICE		MAURA D. AGGARAO PROGRAM MANAGER PROGRAM OFFICE, NORTH SECTOR	MARIA TERESA P. OBLIPIAS REGIONAL MANAGER NORTH SECTOR	MA. BENITA O. REGALA GROUP MANGER HSSG



Office of the President
NATIONAL HOUSING AUTHORITY
Elliptical Road, Diliman, Quezon City
PROJECT TITLE:
**PROPOSED STANDARD 5-STOREY
LOW-RISE BUILDING & LAND DEVELOPMENT**
LOCATION:

ARCHITECT:
DESIGNED BY:
DRAWN BY:
SHEET CONTENT:
PIPE CHASE DETAILS, DROPPED FLOOR
DETAILS, RAMP DETAILS
REVISIONS:
DATE:

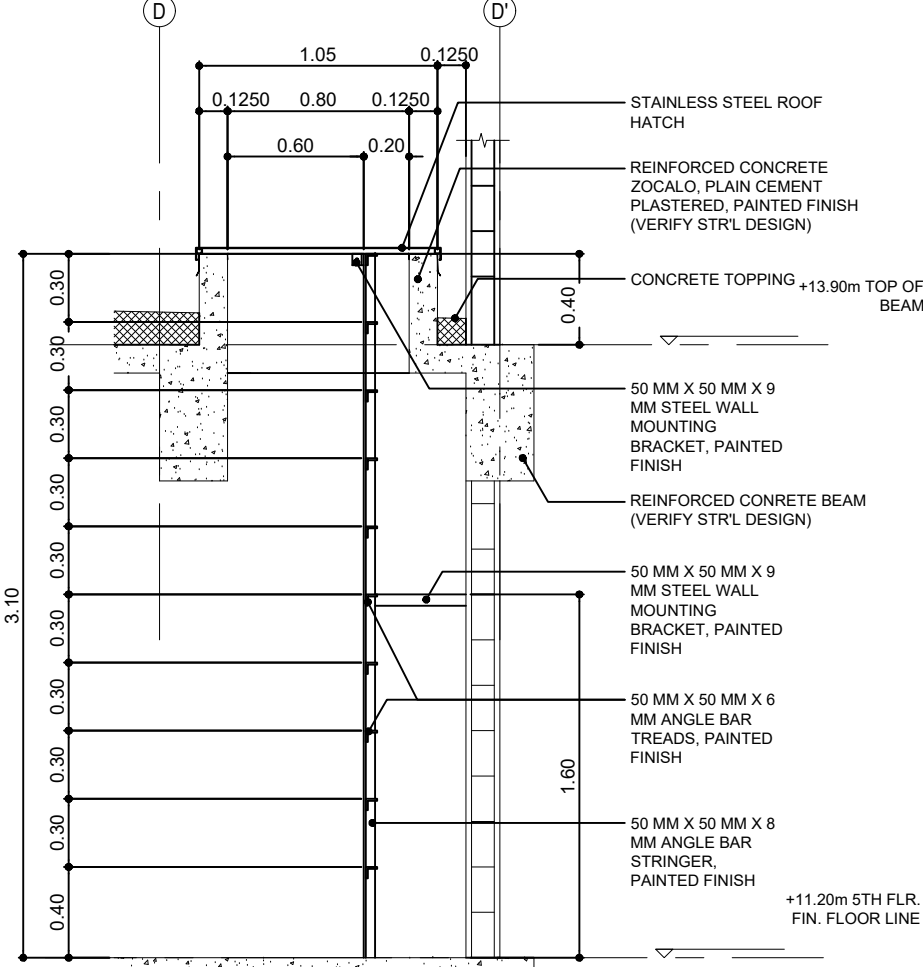
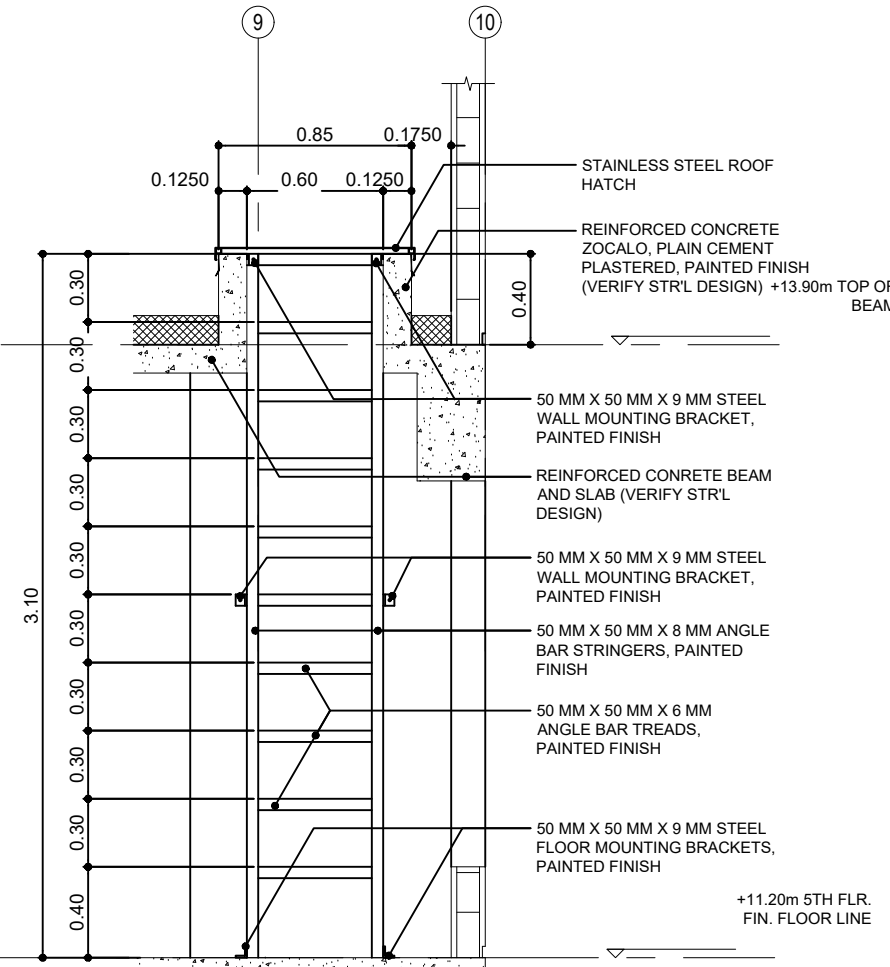
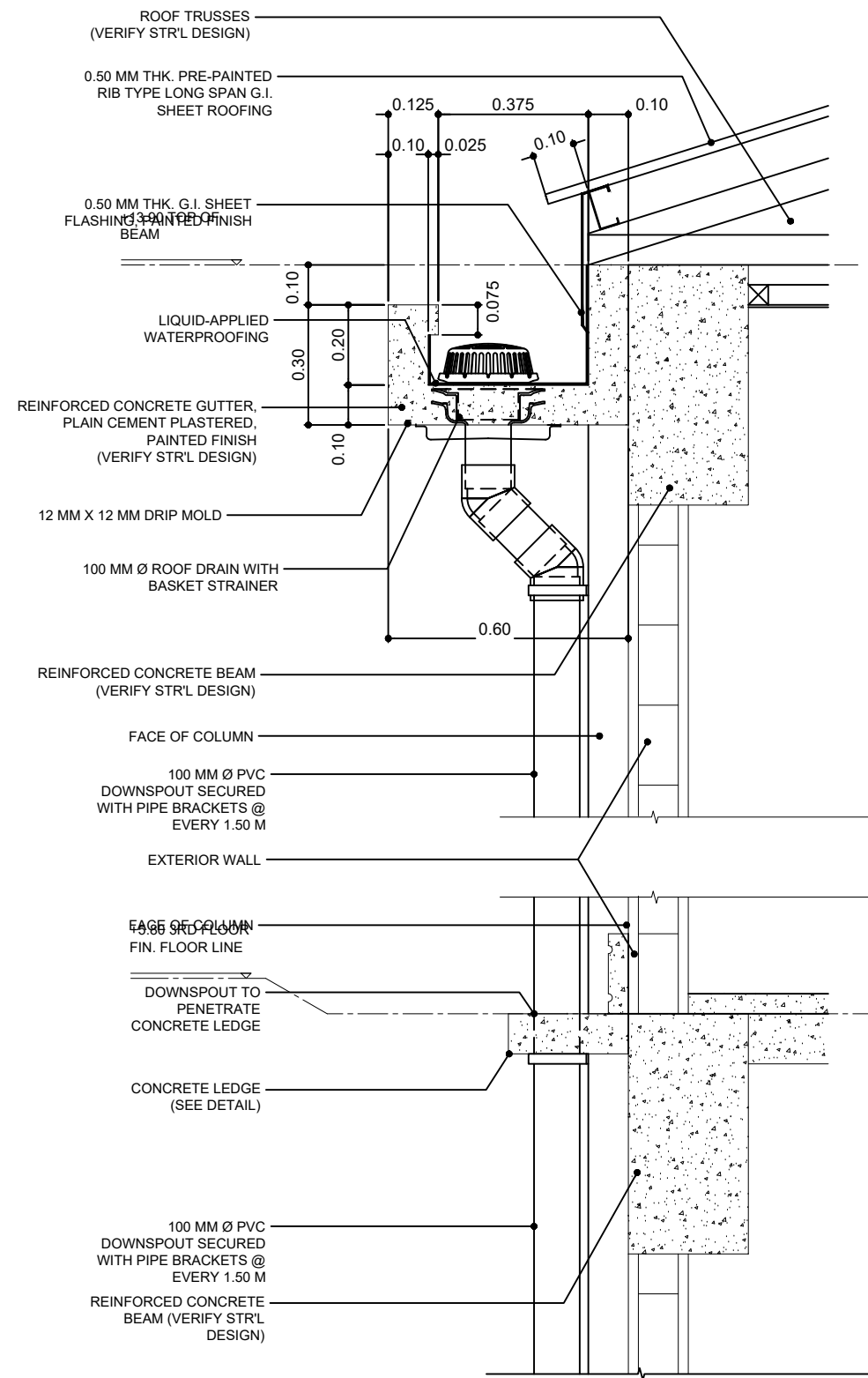
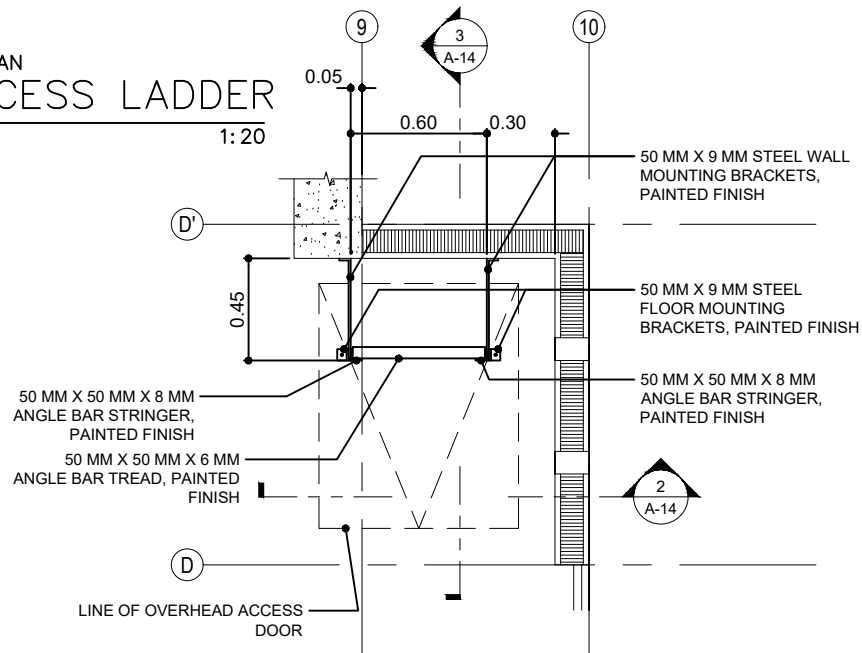
CHECKED BY:
DATE:
STANDARD DESIGNED PREPARED BY:
HOUSING TECHNOLOGY DEVELOPMENT OFFICE
SUBMITTED BY:
REVIEWED BY:
JUANCHO M. CORPUZ
DISTRICT MANAGER
MANAVA DISTRICT OFFICE
MAURA D. AGGARAO
PROGRAM MANAGER
PROGRAM OFFICE, NORTH SECTOR

RECOMMENDING APPROVAL:
MARIA TERESA P. OBLIPIAS
REGIONAL MANAGER
NORTH SECTOR
MA. BENITA O. REGALA
GROUP MANGER
HSSG

APPROVED BY:
MARCELINO P. ESCALADA, JR.
GENERAL MANAGER

SHEET NO.
A
12
16

1
A 13
SCALE 1:20
BLOW-UP PLAN
RD ACCESS LADDER

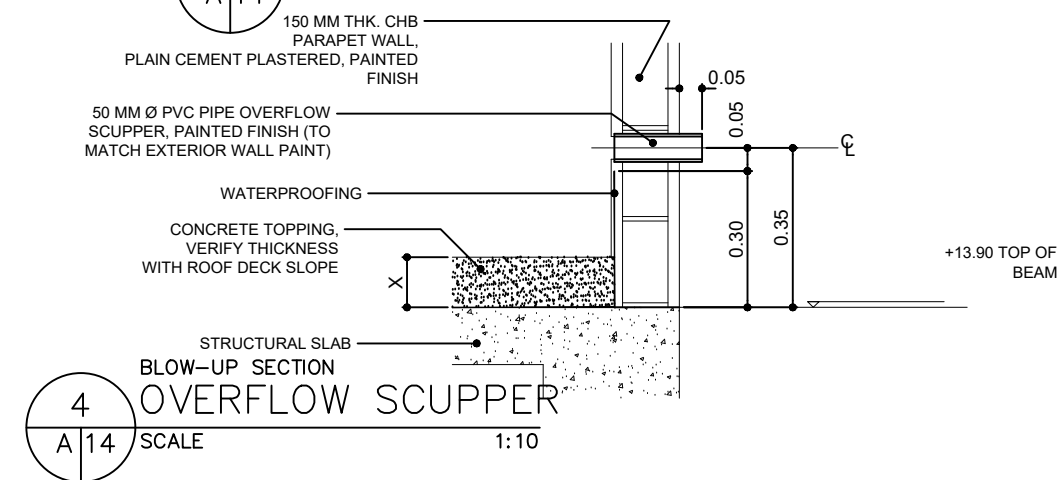
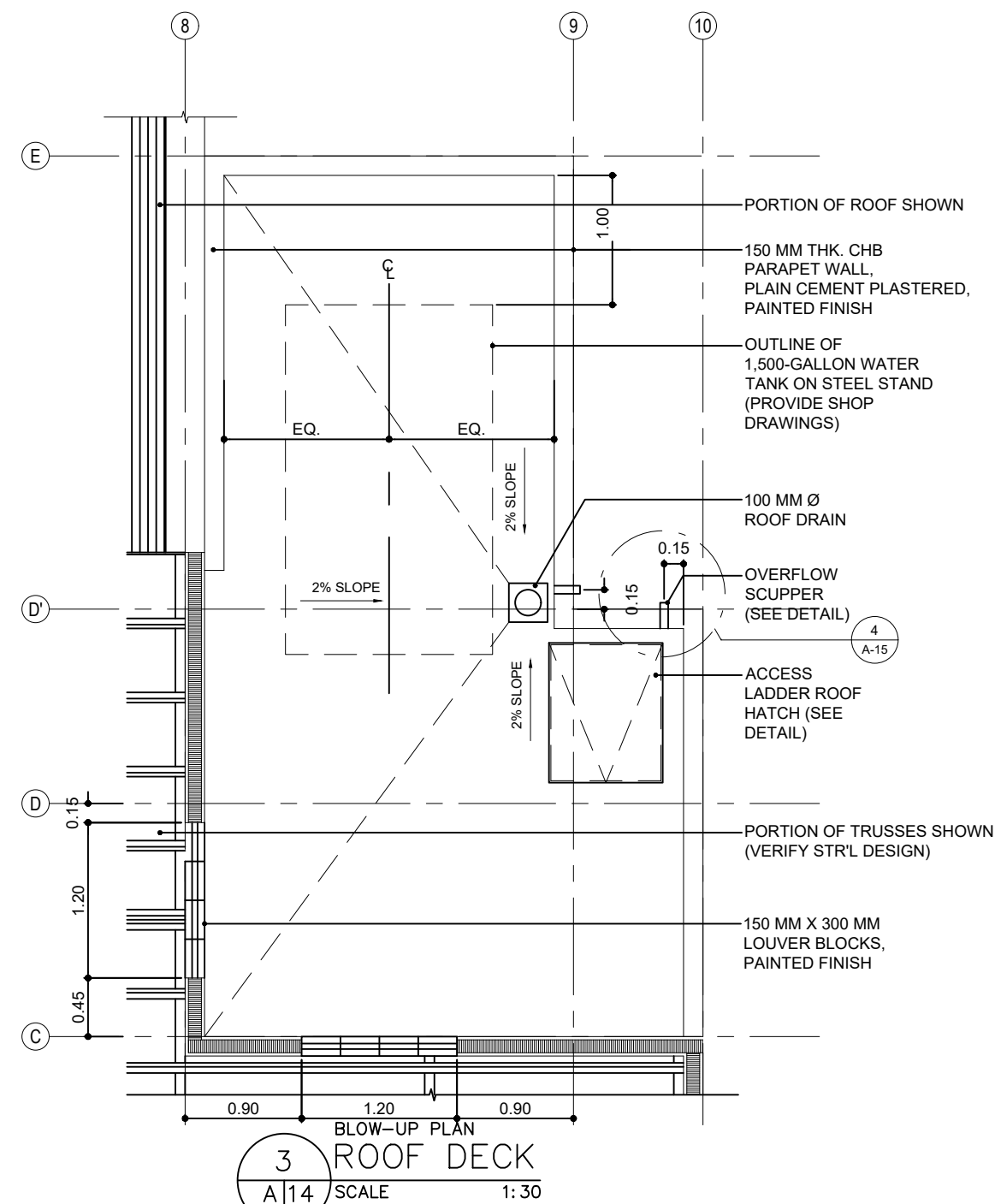
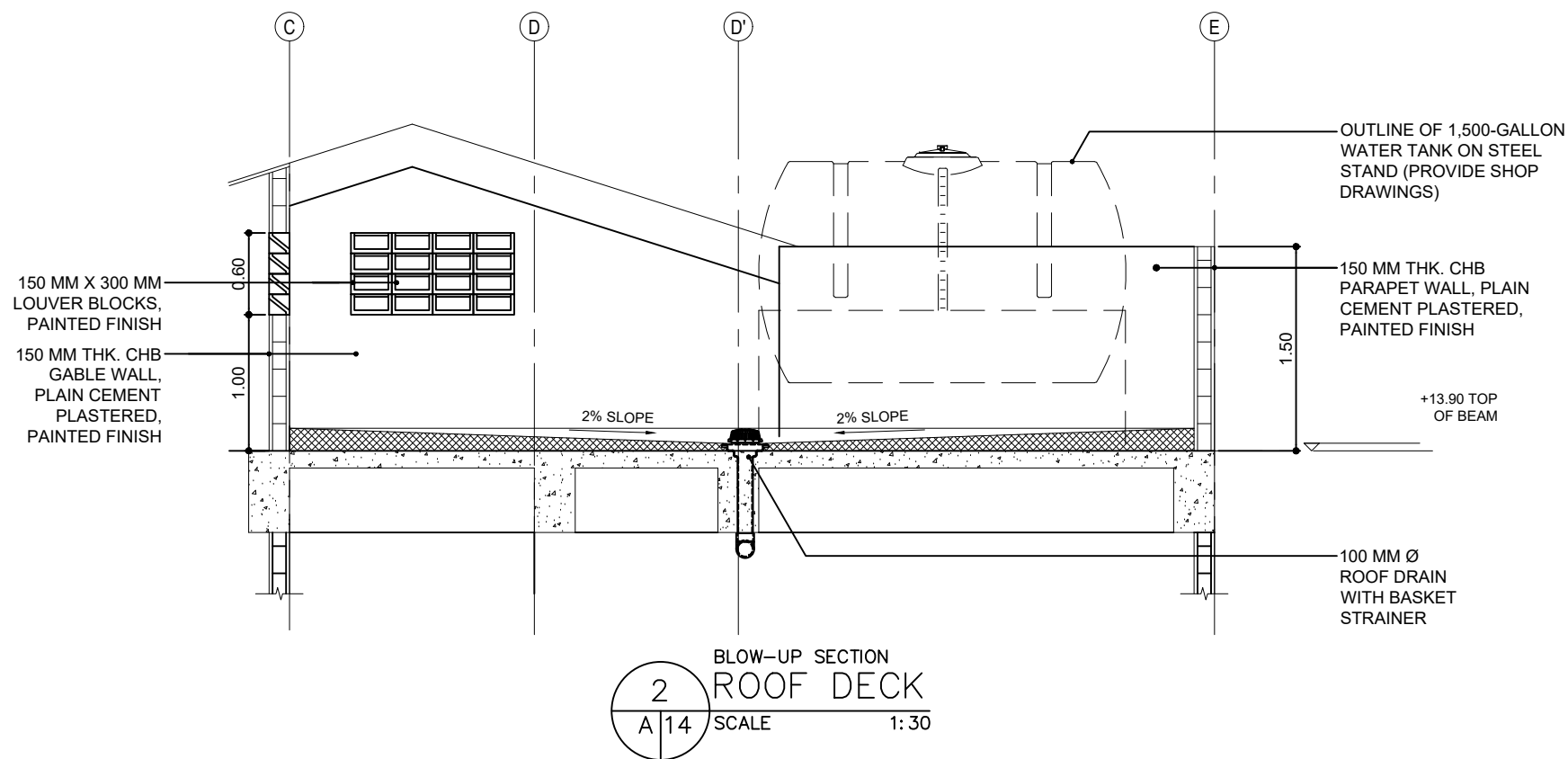
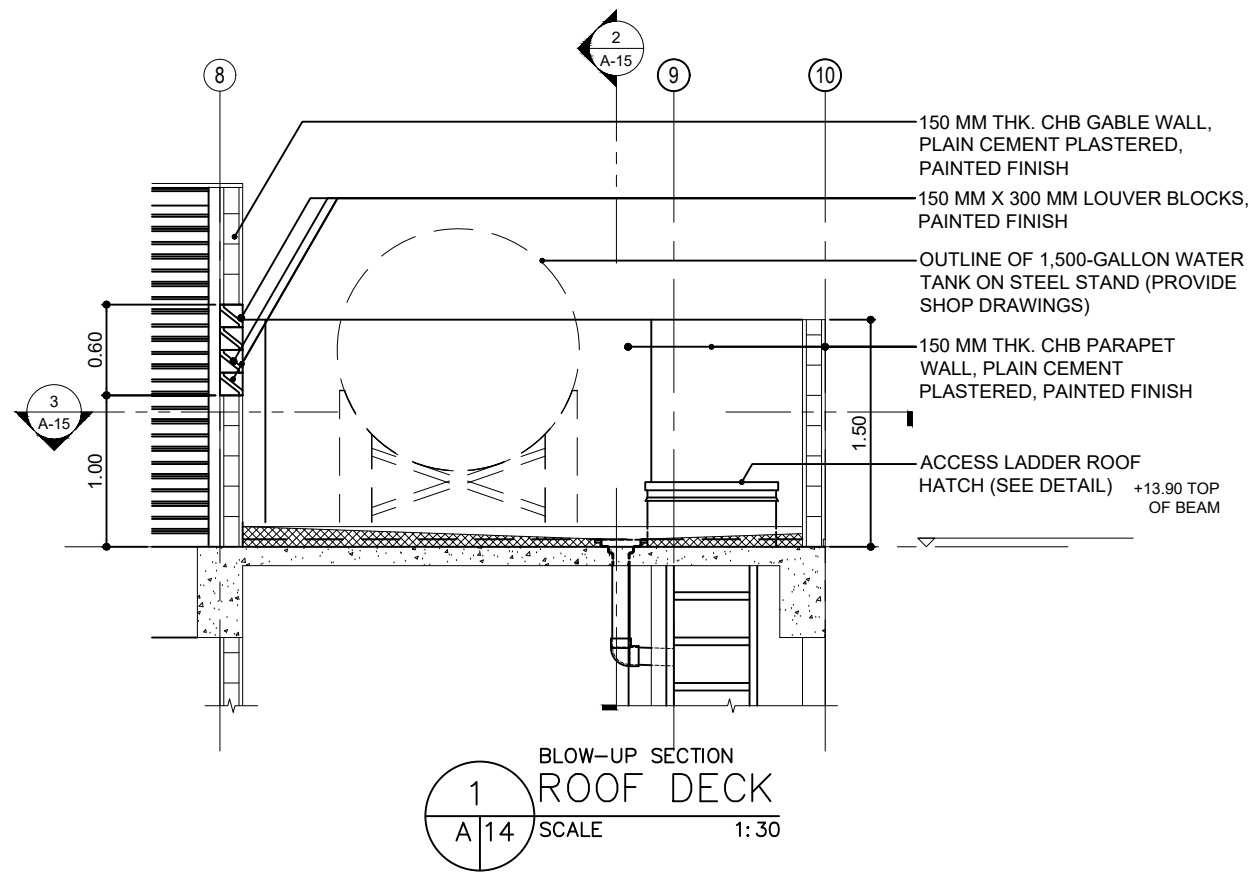


2
A 13
SCALE 1:20
BLOW-UP SECTION
RD ACCESS LADDER

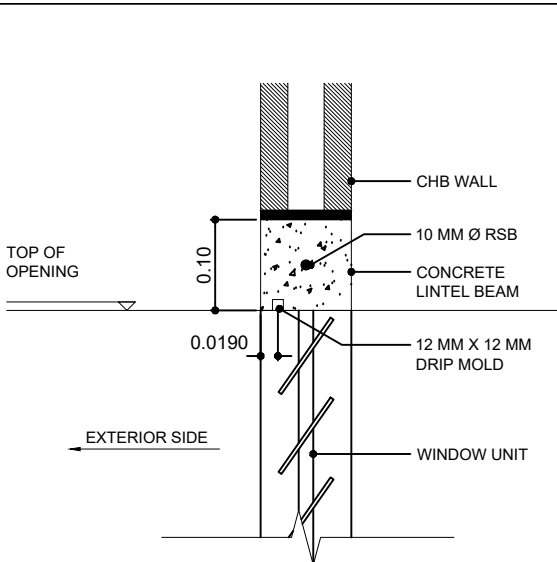
3
A 13
SCALE 1:20
BLOW-UP SECTION
RD ACCESS LADDER

4
A 13
SCALE 1:10
BLOW-UP DETAIL
ROOF GUTTER

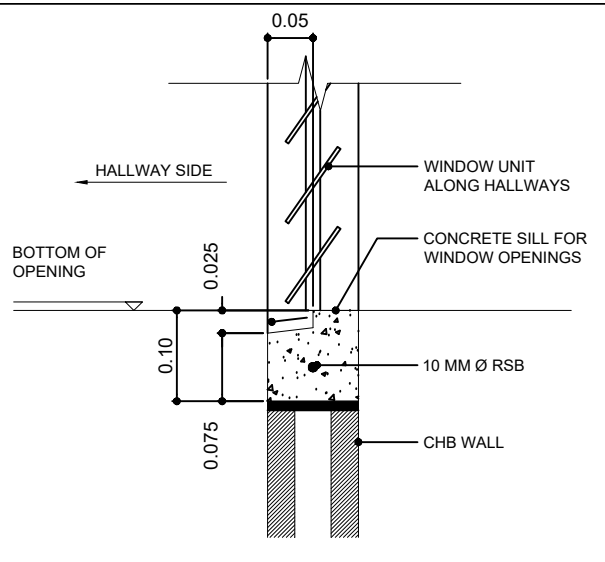
<p>Office of the President NATIONAL HOUSING AUTHORITY Elliptical Road, Diliman, Quezon City</p> <p>PROJECT TITLE: PROPOSED STANDARD 5-STOREY LOW-RISE BUILDING & LAND DEVELOPMENT</p> <p>LOCATION:</p>	<p>ARCHITECT:</p>	<p>DESIGNED BY:</p>	<p>CHECKED BY:</p>	<p>STANDARD DESIGNED PREPARED BY:</p>	<p>APPROVED BY:</p>	<p>SHEET NO.</p>	
	<p>REG No.:</p> <p>PTR No.:</p>	<p>DATE:</p> <p>PLACE:</p>	<p>DRAWN BY:</p> <p>SHEET CONTENT:</p> <p>ACCESS LADDER DETAILS, ROOF GUTTER DETAILS</p>	<p>DATE:</p>	<p>HOUSING TECHNOLOGY DEVELOPMENT OFFICE</p> <p>SUBMITTED BY:</p>	<p>RECOMMENDING APPROVAL:</p>	<p>A</p>
	<p>DATE:</p> <p>PLACE:</p>	<p>REVISIONS:</p>	<p>DATE:</p>	<p>DATE:</p>	<p>JUANCHO M. CORPUZ DISTRICT MANAGER MANAVA DISTRICT OFFICE</p>	<p>MAURA D. AGGARAO PROGRAM MANAGER PROGRAM OFFICE, NORTH SECTOR</p>	<p>MARIA TERESA P. OBLIPIAS REGIONAL MANAGER NORTH SECTOR</p>
	<p>DATE:</p> <p>PLACE:</p>	<p>REVISIONS:</p>	<p>DATE:</p>	<p>DATE:</p>	<p>MA. BENITA O. REGALA GROUP MANAGER HSSG</p>	<p>MARCELINO P. ESCALADA, JR. GENERAL MANAGER</p>	<p>13</p> <p>16</p>



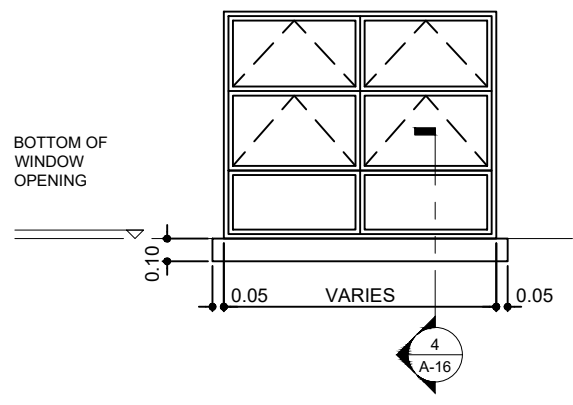
<p>Office of the President NATIONAL HOUSING AUTHORITY Elliptical Road, Diliman, Quezon City</p> <p>PROJECT TITLE: PROPOSED STANDARD 5-STOREY LOW-RISE BUILDING & LAND DEVELOPMENT</p> <p>LOCATION:</p>	ARCHITECT:	DESIGNED BY:	CHECKED BY:	STANDARD DESIGNED PREPARED BY:	APPROVED BY:	SHEET NO. A 14 16	
		DRAWN BY:	DATE:	HOUSING TECHNOLOGY DEVELOPMENT OFFICE			
		SHEET CONTENT:		SUBMITTED BY:	REVIEWED BY:		RECOMMENDING APPROVAL:
		REG No.:	DATE:	JUANCHO M. CORPUZ DISTRICT MANAGER MANAVA DISTRICT OFFICE	MAURA D. AGGARAO PROGRAM MANAGER PROGRAM OFFICE, NORTH SECTOR		MARIA TERESA P. OBLIPIAS REGIONAL MANAGER NORTH SECTOR
	PTR No.:	PLACE:				MARCELINO P. ESCALADA, JR. GENERAL MANAGER	



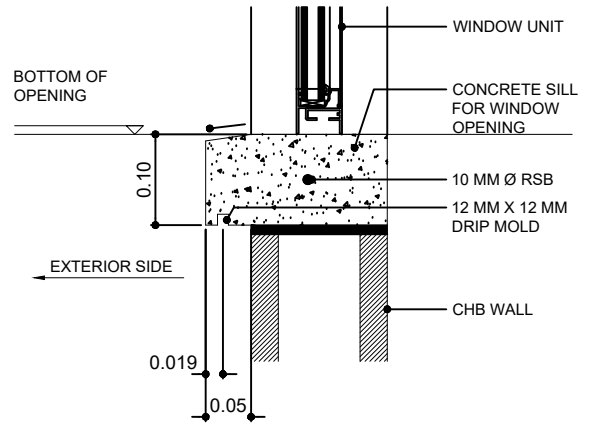
1 BLOW-UP SECTION WINDOW HEADER
A/15 SCALE 1:5



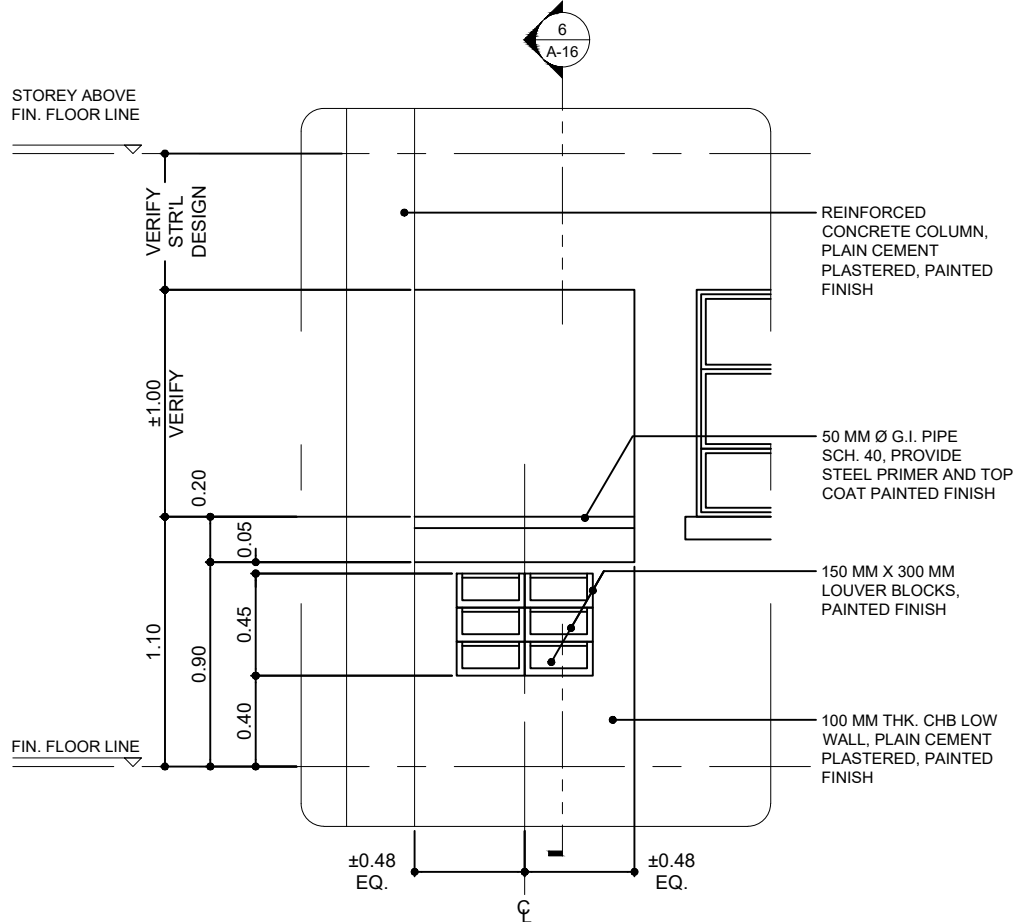
2 BLOW-UP SECTION HALLWAY WINDOW SILL
A/15 SCALE 1:5



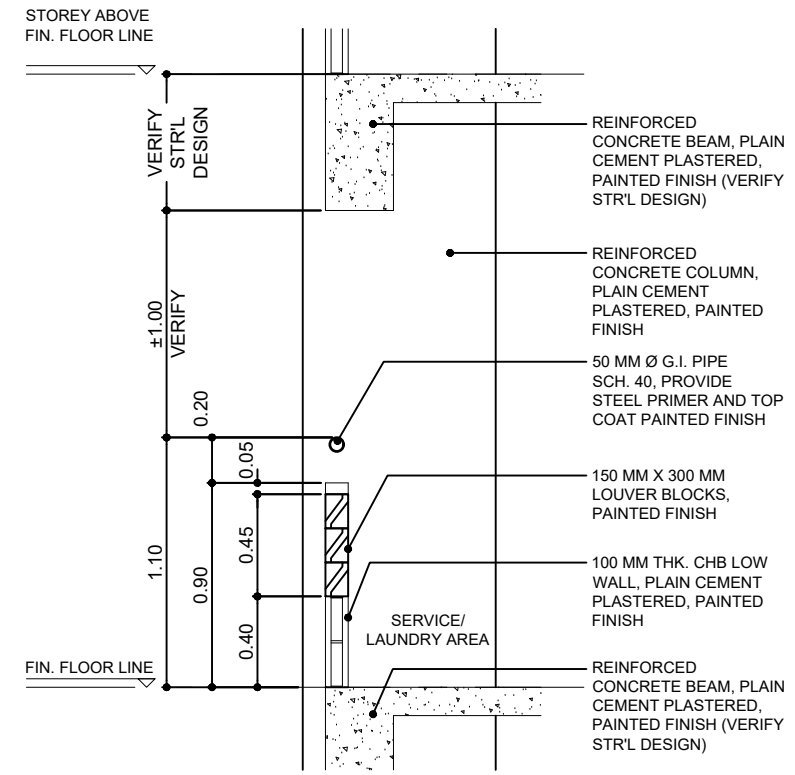
3 BLOW-UP DETAIL WINDOW LEDGE
A/15 SCALE 1:20



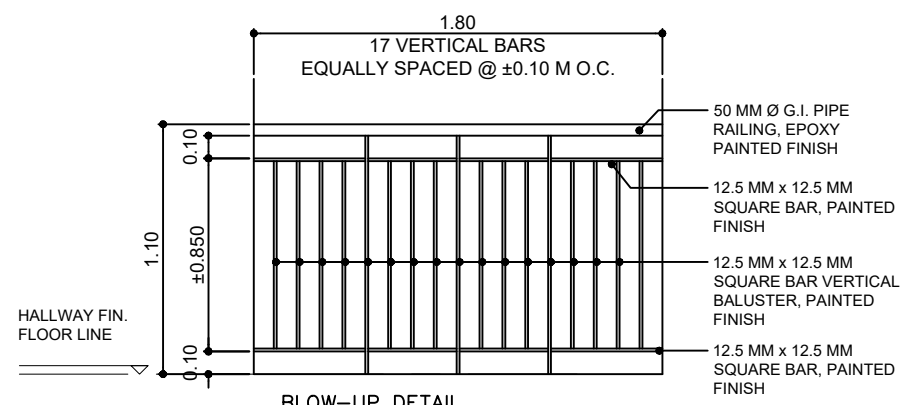
4 BLOW-UP SECTION WINDOW LEDGE
A/15 SCALE 1:20



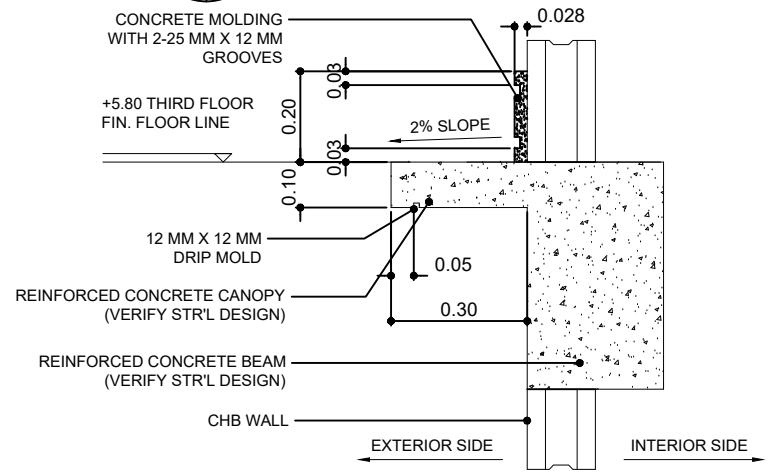
5 BLOW-UP ELEVATION LAUNDRY/SERVICE AREA
A/15 SCALE 1:20



6 BLOW-UP SECTION LAUNDRY/SERVICE AREA
A/15 SCALE 1:20



7 BLOW-UP DETAIL HALLWAY RAILINGS
A/15 SCALE 1:20



8 BLOW-UP SECTION CONCRETE LEDGE
A/15 SCALE 1:10



Office of the President
NATIONAL HOUSING AUTHORITY
Elliptical Road, Diliman, Quezon City
PROJECT TITLE:
**PROPOSED STANDARD 5-STOREY
LOW-RISE BUILDING & LAND DEVELOPMENT**
LOCATION:

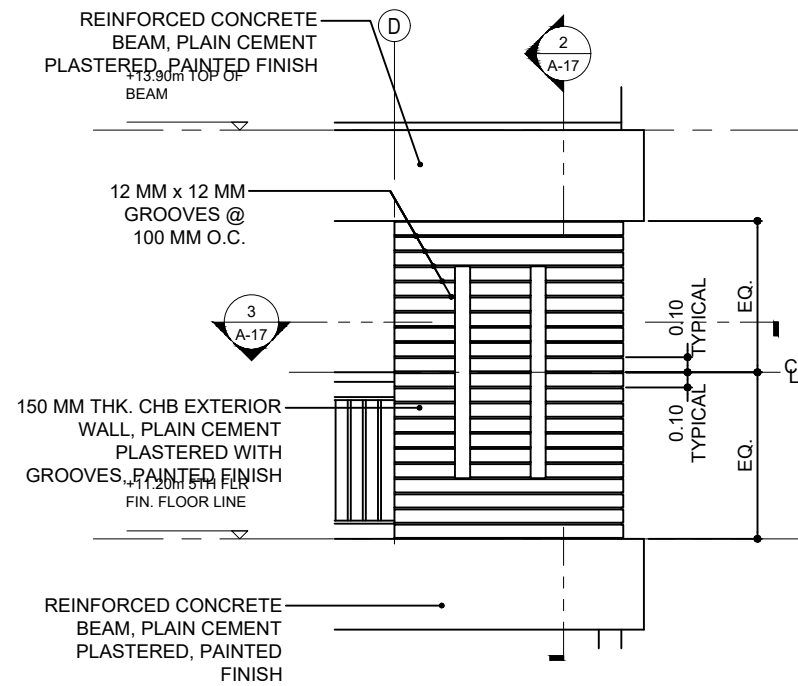
ARCHITECT:
DESIGNED BY:
DRAWN BY:
SHEET CONTENT:
REVISIONS:
DATE:
REG No.:
PTR No.:

STANDARD DESIGNED PREPARED BY:
HOUSING TECHNOLOGY DEVELOPMENT OFFICE
SUBMITTED BY:
JUANCHO M. CORPUZ
DISTRICT MANAGER
MANAVA DISTRICT OFFICE

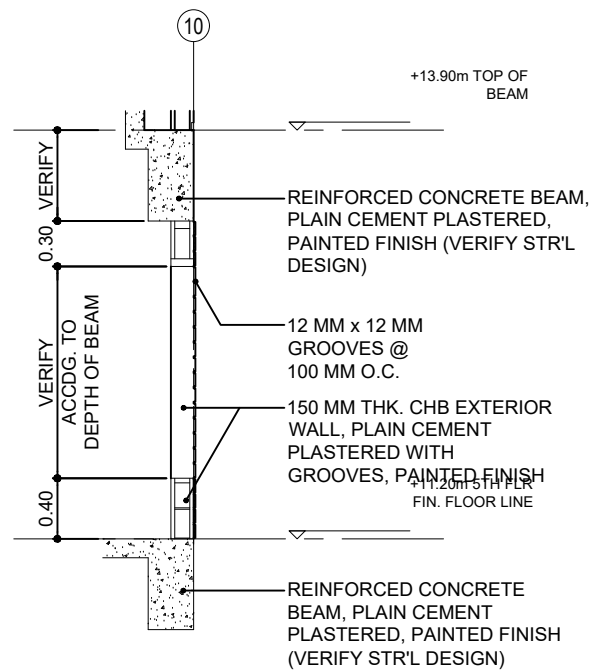
CHECKED BY:
DATE:
REVIEWED BY:
MAURA D. AGGARAO
PROGRAM MANAGER
PROGRAM OFFICE, NORTH SECTOR

RECOMMENDING APPROVAL:
MARIA TERESA P. OBLIPIAS
REGIONAL MANAGER
NORTH SECTOR
MA. BENITA O. REGALA
GROUP MANGER
HSSG
APPROVED BY:
MARCELINO P. ESCALADA, JR.
GENERAL MANAGER

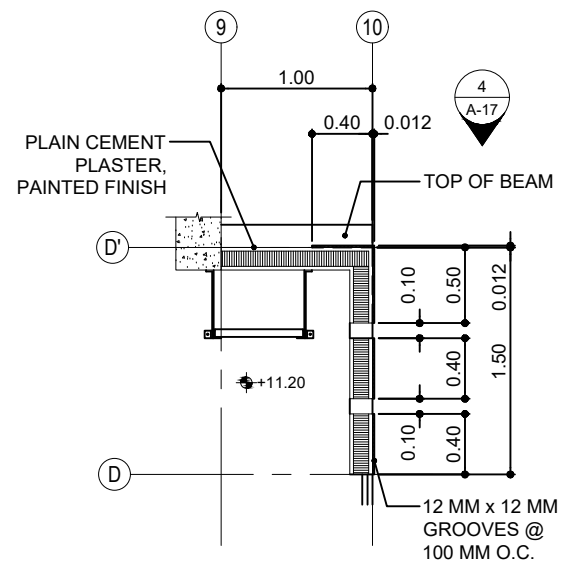
SHEET NO.
A
15
16



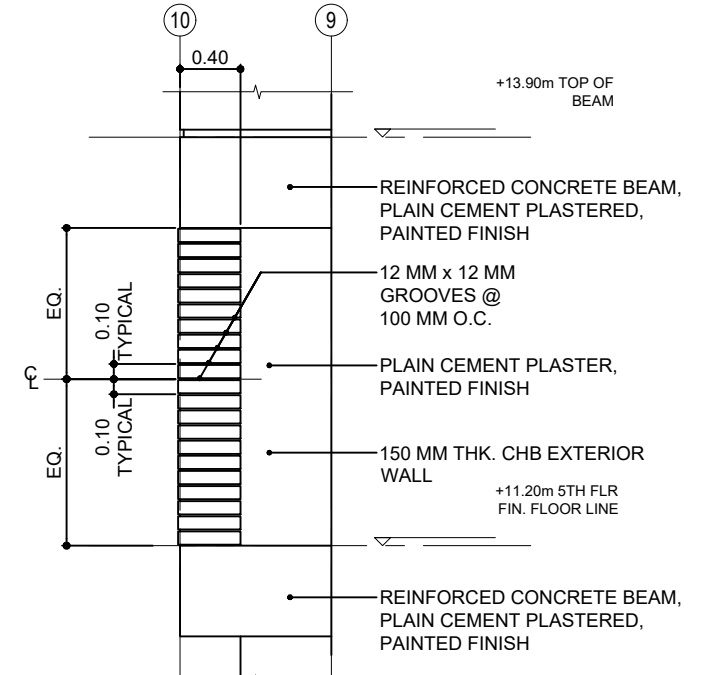
1 BLOW-UP ELEVATION
ROOF DECK WALL
SCALE 1:30



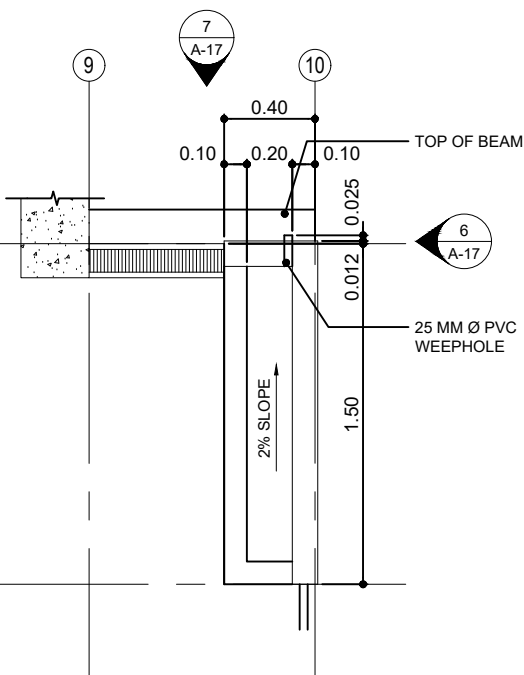
2 BLOW-UP SECTION
ROOF DECK WALL
SCALE 1:30



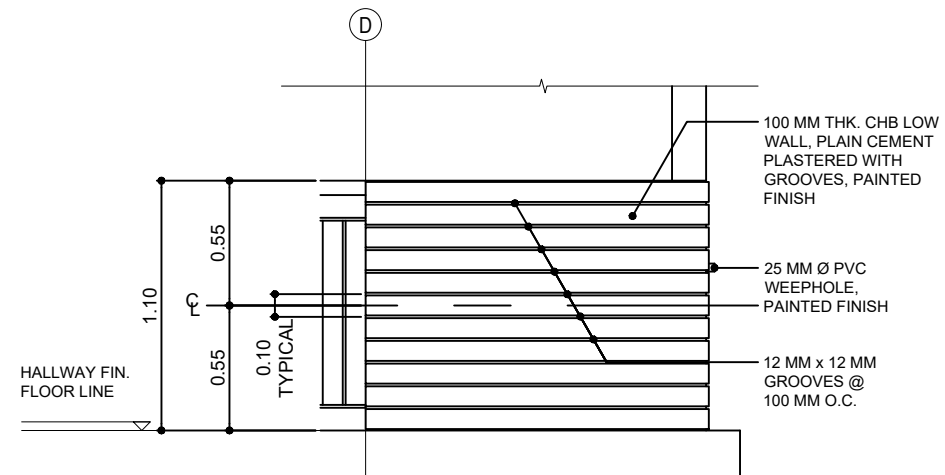
3 BLOW-UP PLAN
ROOF DECK WALL
SCALE 1:30



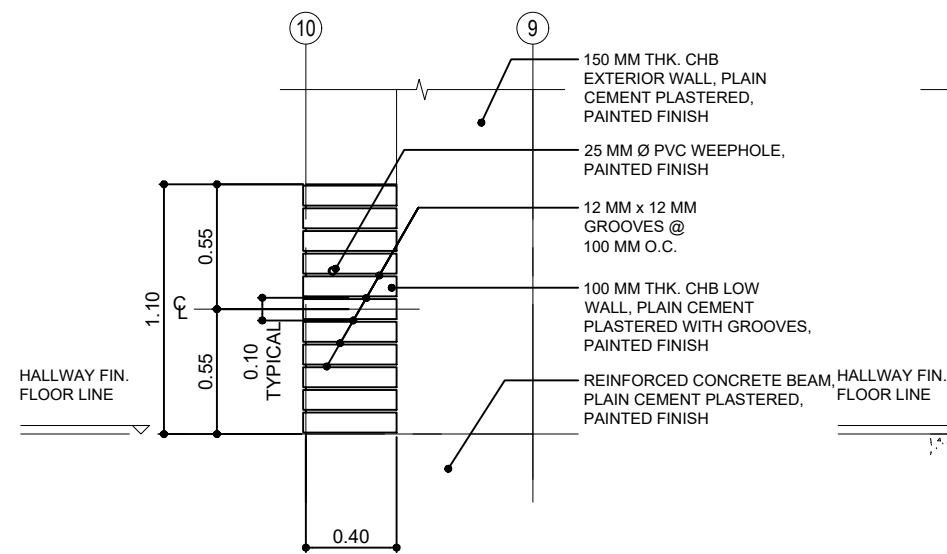
4 BLOW-UP SECTION
ROOF DECK WALL
SCALE 1:30



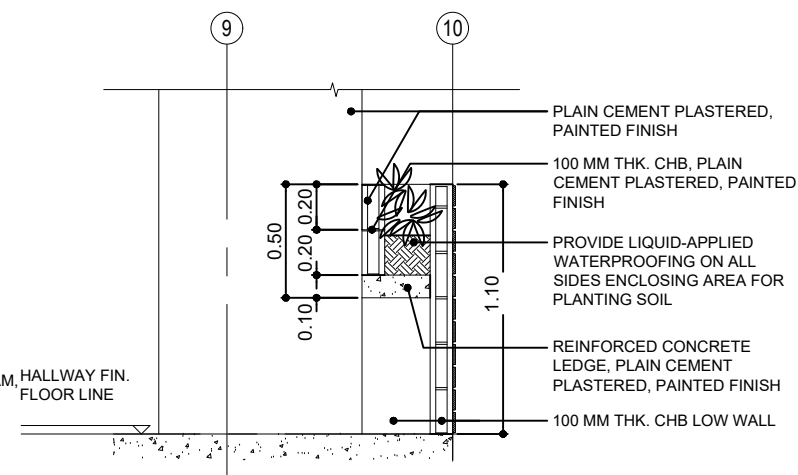
5 BLOW-UP PLAN
PLANT BOX
SCALE 1:20



6 BLOW-UP ELEVATION
PLANT BOX
SCALE 1:20



7 BLOW-UP ELEVATION
PLANT BOX
SCALE 1:20



8 BLOW-UP SECTION
PLANT BOX
SCALE 1:20

<p>Office of the President NATIONAL HOUSING AUTHORITY Elliptical Road, Diliman, Quezon City</p> <p>PROJECT TITLE: PROPOSED STANDARD 5-STOREY LOW-RISE BUILDING & LAND DEVELOPMENT</p> <p>LOCATION:</p>	ARCHITECT: 	DESIGNED BY: 	CHECKED BY: 	STANDARD DESIGNED PREPARED BY: 	APPROVED BY: 	SHEET NO. 	
	DRAWN BY: 	SHEET CONTENT: 	HOUSING TECHNOLOGY DEVELOPMENT OFFICE 	SUBMITTED BY: 	REVIEWED BY: 		
	REVISIONS: 	DATE: 	JUANCHO M. CORPUZ DISTRICT MANAGER MANAVA DISTRICT OFFICE 	MAURA D. AGGARAO PROGRAM MANAGER PROGRAM OFFICE, NORTH SECTOR 	MARIA TERESA P. OBLIPIAS REGIONAL MANAGER NORTH SECTOR 	MA. BENITA O. REGALA GROUP MANGER HSSG 	
	REG No.: PTR No.: 	DATE: PLACE: 				MARCELINO P. ESCALADA, JR. GENERAL MANAGER 	A 16 16