



TEXAS A&M UNIVERSITY

COMMERCE

Communicating Your Story with Institutional Effectiveness Processes

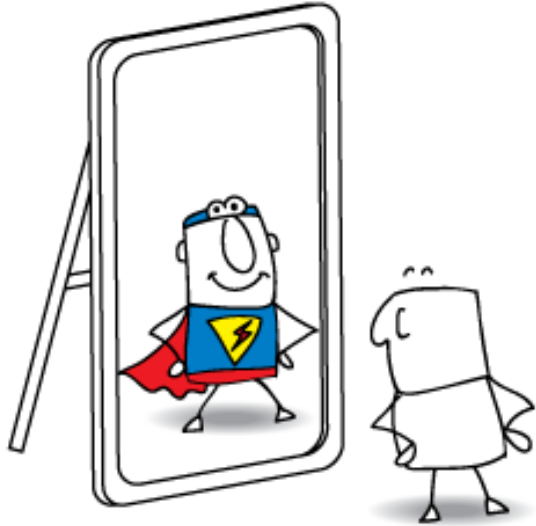
IE Spring Series | February 7th

Workshop Learning Outcomes

Participants will be able to –

- utilize A&M-Commerce's assessment documentation to demonstrate a narrative of strategic planning and continuous improvement efforts at the unit/program level
- evaluate the effectiveness of documented assessment results in providing evidence of seeking improvement based on analysis of results

Institutional Effectiveness Processes



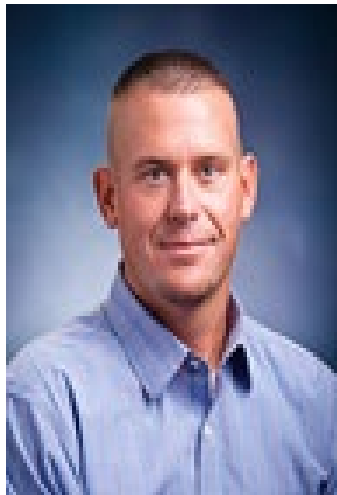
Why do we participate in IE Processes?



Who is SACSCOC?



Who is SACSCOC?



Who is SACSCOC?



Who is SACSCOC?



Sharing My Story

Dr. Tabetha Adkins



The First-Year TRAC

Transforming Relationships & Academic Connections



ORIENTATION

Gives you direction and guidance.



LION CAMP

Gets you ready and excited to start.



MENTOR HOUSE

Creates community and networks.



SIGNATURE COURSE

Representation of various courses.



BOOK IN COMMON

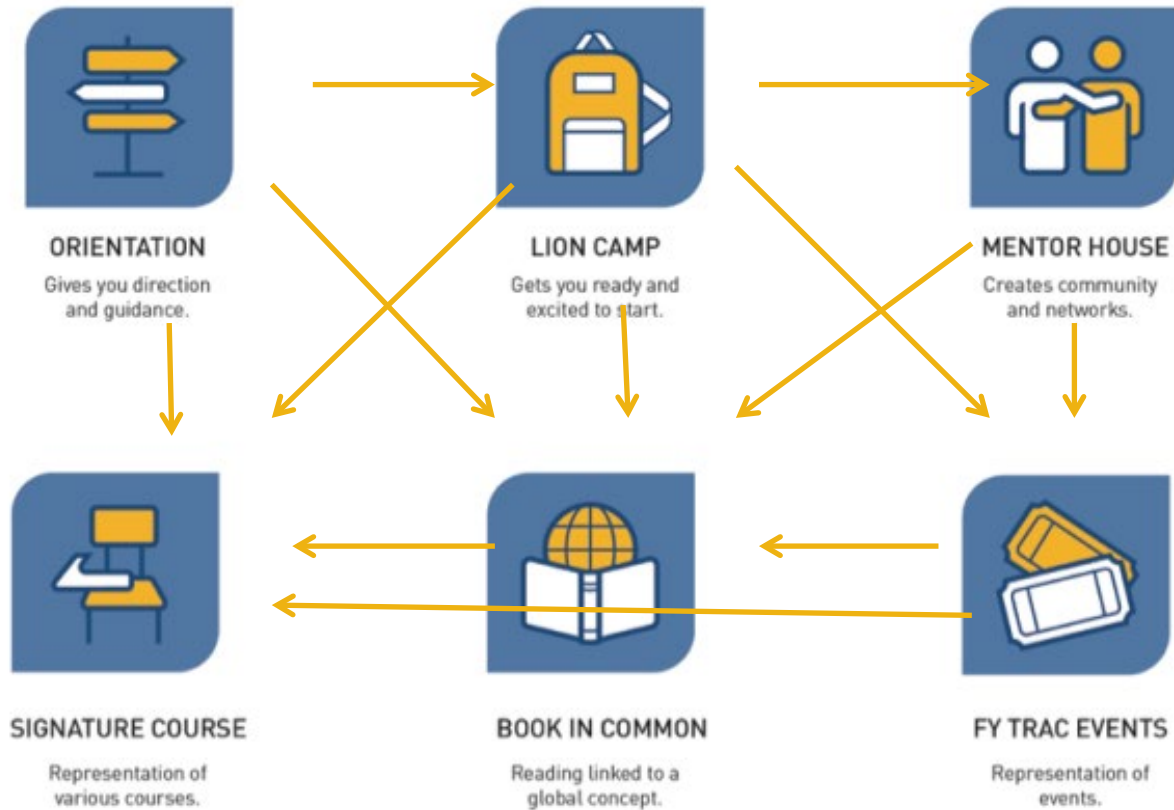
Reading linked to a global concept.



FY TRAC EVENTS

Representation of events.

TRAC Alignment



Assessment

Done:

- Survey of freshmen re: mentor groups
- Assessment of student work in Fall 2017
Signature Courses

Planned:

- Focus groups
- Survey of TRAC in general

Findings:

Mentor Groups:

- Students <3 their mentor
- ...but did not find purpose in mentor group
- But 15% of students who responded had no peer connections upon coming to the University
- Close to 40% knew 3 or fewer students upon coming to the university.

Signature Courses:

- Very promising results in oral communication (Core)

Result

- Mentors imbedded in Signature Course and select Core courses Fall 2018

Sharing My Story

Dr. Brent Donham



Institutional Effectiveness Processes

Lesson Learned (or still Learning)

Program Outcome:

Meet professional requirements necessary for engineering licensure

Assessment:

Students took the FE exam – performed poorly on heavy civil questions

Industry advisory board indicated graduates needed heavy construction

FE Exam benchmark – gap in the area of heavy civil/construction

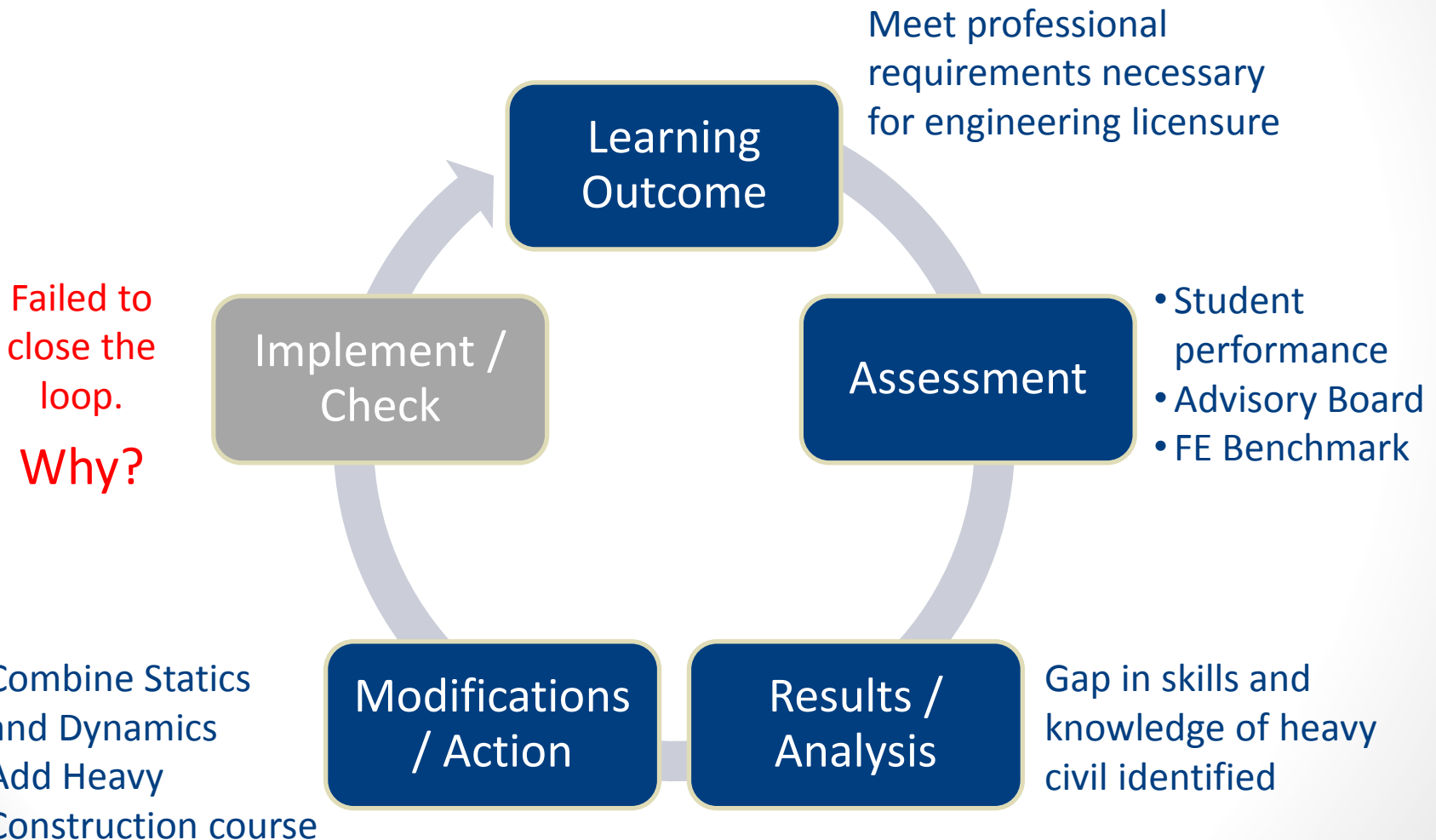
Action:

Added CONE 441 – Highway & Heavy Construction course to curriculum

Combined Statics and Dynamics in a single course to make room for CONE 441

Institutional Effectiveness Processes

Lesson Learned (or still Learning)



Institutional Effectiveness Processes

Support Services Example

Research:

University study – late registering students have a lower retention rate

CoSE Advising Goal:

Improve student retention rates

Assessment Method:

Actively track existing students who have registered for subsequent term

Standard of Success (Target):

85% of eligible existing students registered at least 1 week prior to start of the next term

2016-2017 Results:

70% of Spring students registered prior to Summer I (not met)

82.4% of Fall students registered prior to Spring (not met)

Institutional Effectiveness Processes

Support Services Example

CoSE Advising Goal

Improve student retention rates

Student Success

*Implement effective, research-based strategies, providing high-quality instruction and **student support**, through a variety of **services**, and resulting in **timely degree completion** by graduates who are prepared for the workforce or for continued study in graduate and/or professional programs.*

Group Activity



Questions?

Thank you for attending and for your participation!

Who is the
Lucky Winner?





Department of Institutional Effectiveness & Research

Institutional Effectiveness **SPRING SERIES**

This event series offers professional development opportunities for continuous improvement within academic programs and support units.

Register at [TAMUC.EDU/IER](https://tamuc.edu/ier)

AIR Webinar: Culture of Evidence Part 1 – February 22nd, 2:00-3:00pm

AIR Webinar: Culture of Evidence Part 2 – March 1st, 2:00-3:00pm

Peer-to-Peer: Review of IE Forms – March 21st, 10:00-11:00am

AIR Webinar: Dos and Don'ts of Survey Research Part 1 – April 3rd, 2:00-3:00pm

AIR Webinar: Dos and Don'ts of Survey Research Part 2 – April 10th, 2:00-3:00pm

Active Workshops: IE Forms and Processes – Offered April and May

Visit www.tamuc.edu/ie to register