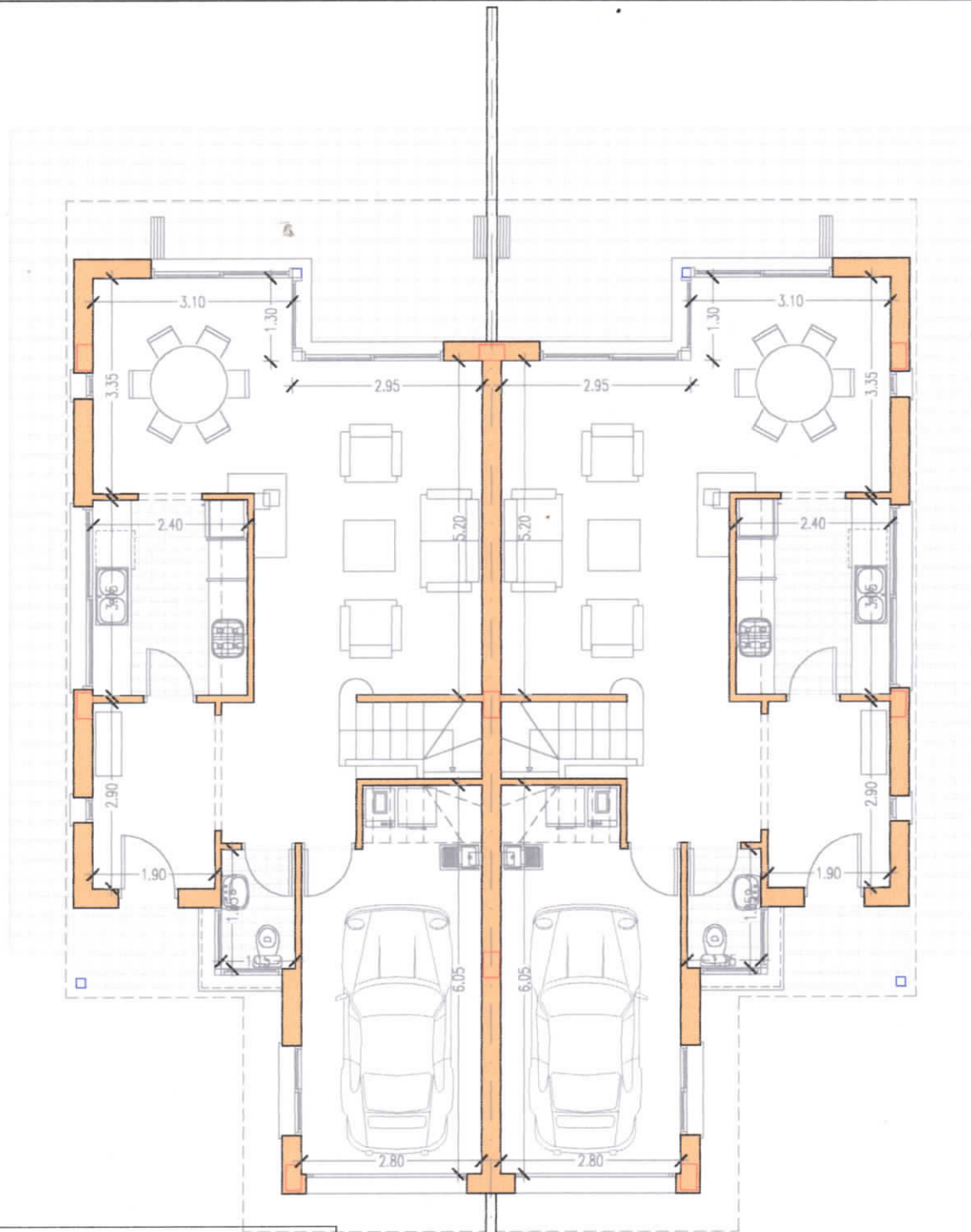




B3 - LOS PINOS	
EMPLAÇAMENT	e.1/500

LOS PINOS 6

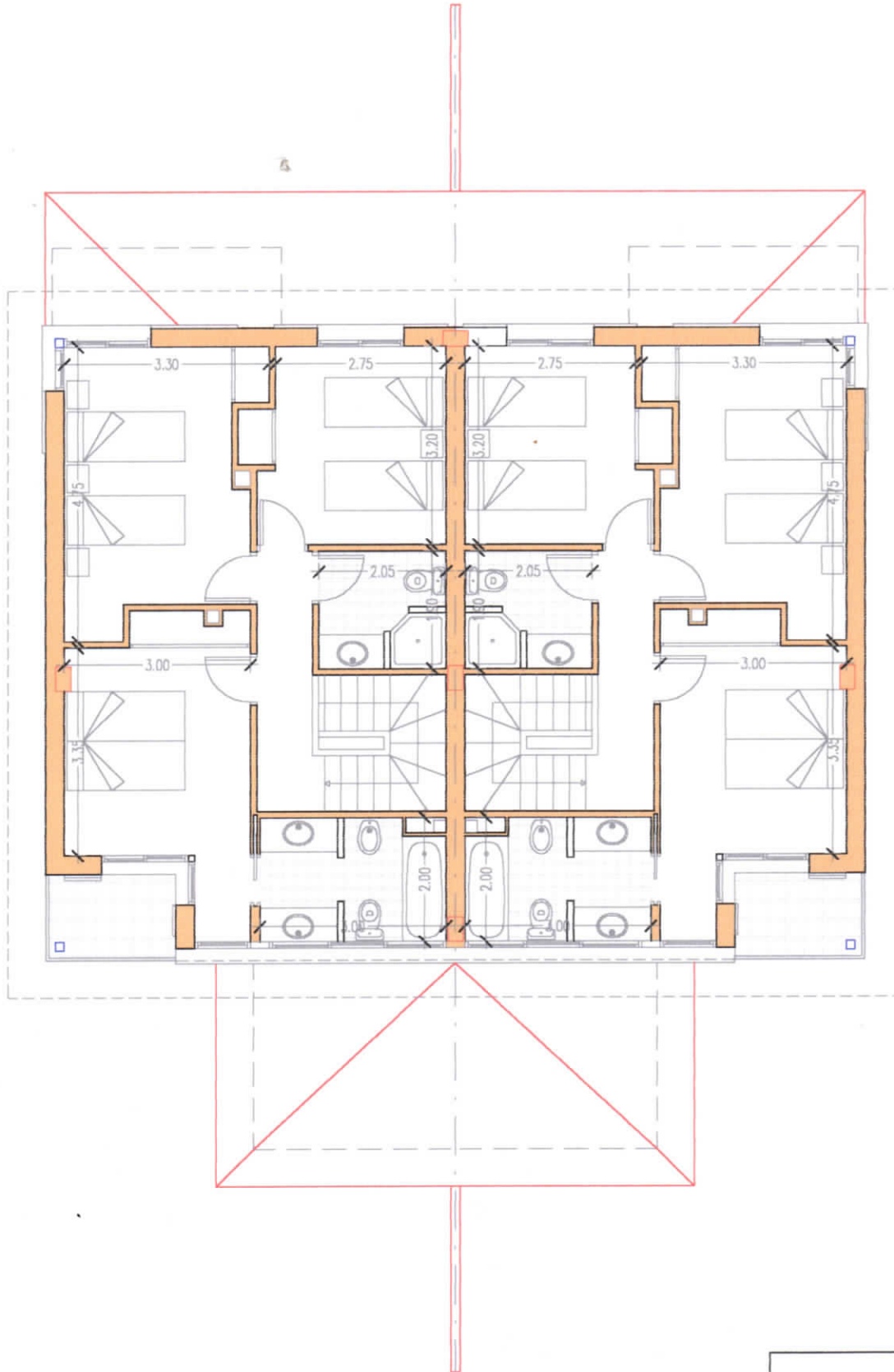


LOS PINOS 5

VOLADIU:	24.95 m2
TERRASSES:	25.80 m2
PERGOLA JARDI:	15.00 m2
SUPERFICIES CONSTRUIDES	
PLANTA BAIXA:	78.04 m2
PORXOS(100%):	6.14 m2
PLANTA PIS:	64.47 m2
PORXOS(100%):	2.95 m2
TOTAL:	151.60 m2

B3	
MODEL 3	
PL BAIXA	e.1/100

LOS PINOS 6



LOS PINOS 5

B3	
MODEL 3	
PL PIS	e.1/100