

Housing & Streetcar: Planned Together



Growing community along the line.

When city officials planned Portland's streetcar route in the mid-1990s, they knew that the success of our transit system was closely linked with housing development in the central city.

As a community, we planned the future of our land use and transportation systems together in a way that would foster vibrant neighborhoods and connect Portlanders to jobs, schools, and services. Today, we're seeing the results of that planning.

Since Portland Streetcar opened in 2001, nearly half of all multifamily housing built in Portland has been located within 1/4 mile of the streetcar's line. Today, this success story is growing: 54 percent of new multifamily units built in 2016 are along the Streetcar corridor.

The Streetcar is also linked closely with building more affordable housing. Over one-third of all regulated affordable housing units in Portland are located along the streetcar corridor and another 645 regulated affordable housing units are currently planned or under construction.

As we continue to plan for a growing, vibrant city, Portland Streetcar will play a leading role in guiding where and how housing investment happens.

HOUSING ALONG THE STREETCAR CORRIDOR

Located within 1/4 mile of the Portland Streetcar tracks are:

49% of all housing units built in Portland in the last 20 years

3,130 housing units built in 2016

5,600 new units planned/under construction

6,659 regulated affordable units

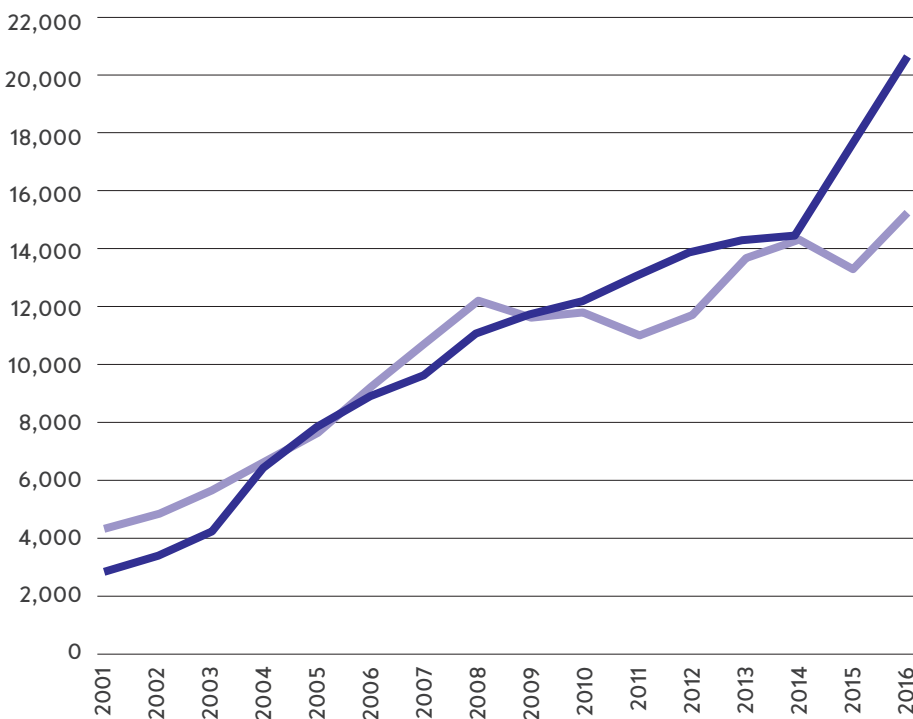
645 new regulated affordable units planned/under construction

\$8.4 BILLION in real market value created since 1998 (17.9% of real market value citywide)

As New Housing is Built, Streetcar Ridership Grows

Over the past 16 years, streetcar ridership has grown steadily along with housing construction, with over 15,000 riders per day and 4.7 million total riders last year. In 2016, 3,130 new multifamily housing units were built along the Streetcar Corridor, the most in the system's history.

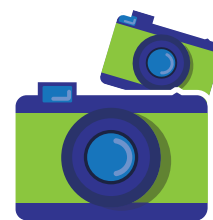
Total Number Of Housing Units Built Within 1/4 Mile Of Portland Streetcar & Average Weekday Ridership: 2001-2016



— Total Housing Units
— Weekday Ridership

DAILY TRANSPORTATION FOR THE CENTRAL CITY

40% OF RIDERS come from households without a car



LESS THAN 5% of riders are tourists

32% OF RIDERS earn less than \$30,000 per year



THE TOP DESTINATIONS

for Portland Streetcar Riders:

