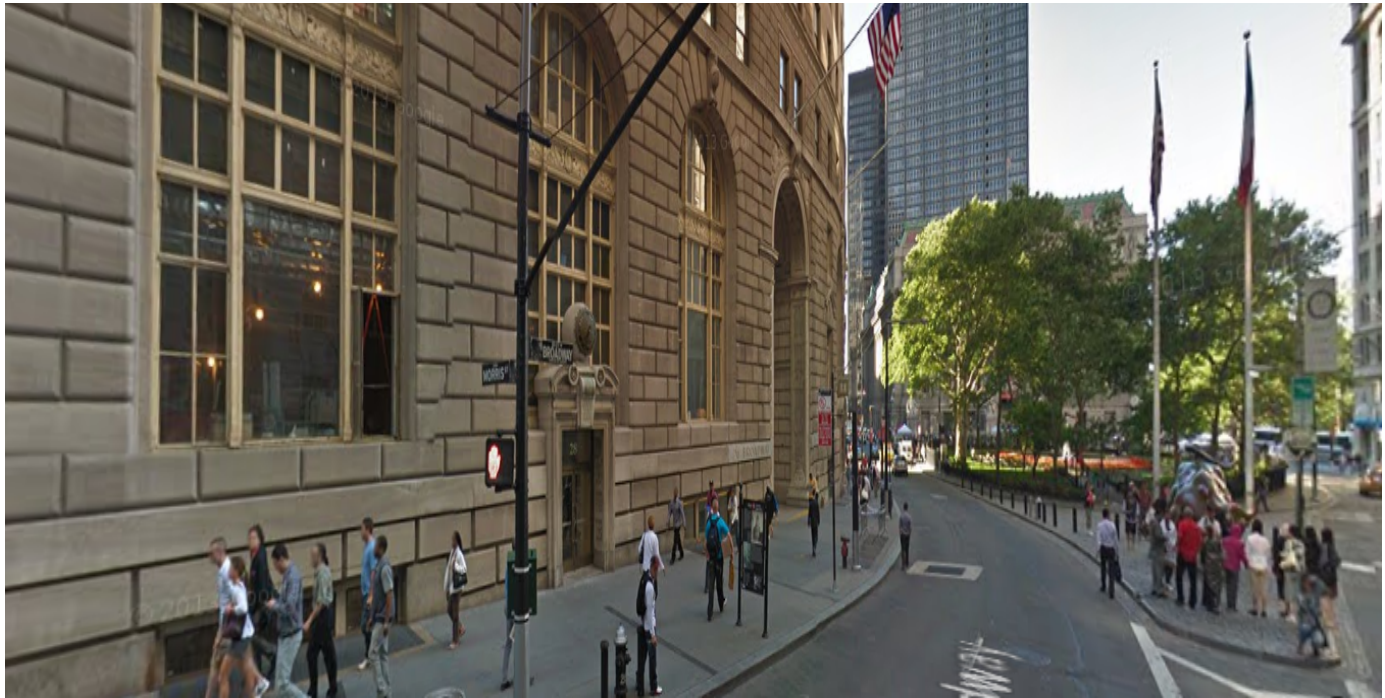


BROADWAY RETAIL SPACE
26 Broadway – Standard Oil Building
New York, NY 10004



NCL Capital Advisors



FLOOR

GROUND

BASEMENT

TOTAL

SIZE

9,000 SF

9,000 SF

18,000 SF

COMMENTS

- **Prime Broadway Location – 100 Feet of Frontage**
- **Heavy foot traffic 7 days a week (tourist, commercial and residential)**
- **The closest retail space to the Wall Street Charging Bull – “The most visited, most photographed and perhaps most loved and recognized statue in the city of New York”**
- **High Ceilings – 13’ 4” Ground Floor – 9’ 11” Basement**
- **Steps from Wall Street and major transportation**
- **Downtown annual spending power according to “Downtown Alliance” was \$5.2 BILLION as of 2014**
- **3,465 Additional Hotels in the Development Pipeline**
- **Downtown residential development estimated 61,000 residents in 30,500 units are expected to grow an additional 1,700 units which are under construction**

ASKING RENT

Upon Request

POSSESSION

Arranged

LEASE TYPE

Direct

USAGE

All Uses Considered

The information contained herein has either been given to us by the owner of the property or obtained from sources that we deem reliable. We have no reason to doubt its accuracy but we do not guarantee it. All zoning, buildable footages and uses must be independently verified.

BROADWAY RETAIL SPACE

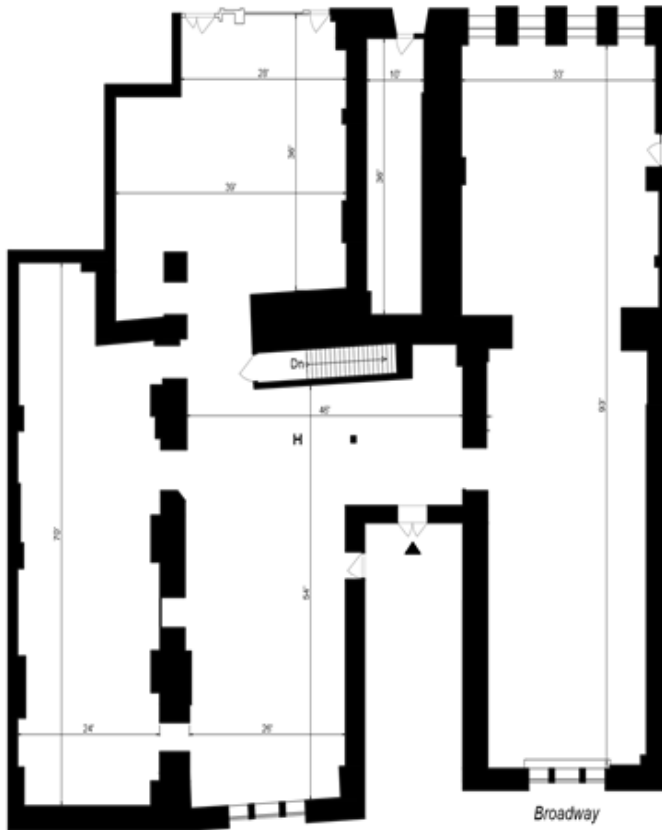
26 Broadway

New York, NY 10004



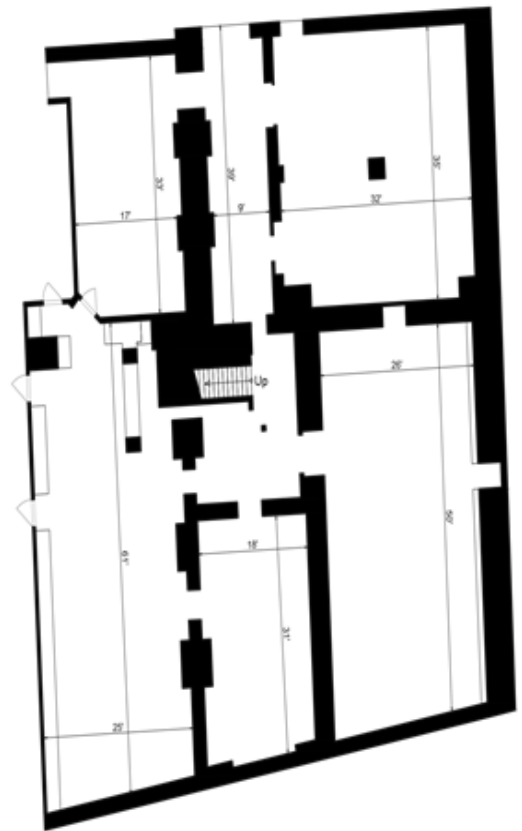
NCL Capital Advisors

FLOOR PLAN



FIRST FLOOR

Typical Ceiling Height: 13'-4"



BASEMENT

Typical Ceiling Height: 9' - 11" (to bottom of barrel vault ceiling)



For further information please contact:

Nelson Lee

917.885.0894 | nelson@nclcapa.com

Zachary Walter

201.787.6532 | Zach@nclcapa.com

BROADWAY RETAIL SPACE

26 Broadway

New York, NY 10004



NCL Capital Advisors



★ 26 Broadway

Hotel

Pedestrian Counts, Total Daily Traffic:

- 1 55,577
- 2 22,894
- 3 25,856
- 4 19,929
- 5 35,043
- 6 15,141
- 7 26,136

Subway Ridership, Average Weekday:

- 2,3 A.C.J.Z.4.5 at Fulton: 85,728
- 1 at Cortlandt & Greenwich: NA
- N.R at Church & Liberty: NA
- R.W at Rector & Trinity: 9,570
- 1 at Greenwich & Rector: 7,960
- 2.3 at Wall Street: 26,211
- 4.5 at Wall & Broadway: 22,401
- 4.5 at Bowling Green: 27,079
- 1.R.W at South Ferry: 29,299

Projected Daily Ridership at the Fulton Transit Center and Calatrava Transportation Hub: 400,00

Projected Annual Tourism in Lower Manhattan when the WTC Memorial & Museum open: 10 - 12 million



For further information please contact:

Nelson Lee

917.885.0894 | nelson@nclcapa.com

Zachary Walter

201.787.6532 | Zach@nclcapa.com

BROADWAY RETAIL SPACE

26 Broadway

New York, NY 10004



NCL Capital Advisors

AREA RETAIL MAP



For further information please contact:

Nelson Lee

917.885.0894 | nelson@nclcapa.com

Zachary Walter

201.787.6532 | Zach@nclcapa.com

BROADWAY RETAIL SPACE

26 Broadway

New York, NY 10004



NCL Capital Advisors

One World Trade Center

Lower Manhattan has seen a \$30 Billion public and private investment and is poised to become Manhattan's largest tourist attraction. Projects including One World Trade Center, The Fulton Center, and the 9/11 Memorial Museum are to be completed in 2014.

One World Trade Center is in the final stages of exterior completion. The Port Authority of New York and New Jersey has signed a 15-year deal with Legends Hospitality to develop and operate a 3-floor observation deck on the 100th, 101st, and 102nd floors. Legends Hospitality operates stadium facilities for the Dallas Cowboys and the New York Yankees. Legends will operate the observatory along with the event space and dining areas. "One World Observatory" totals 120,000 square feet and will compete with New York's other top observation decks when it opens in 2015. 30 Rockefeller Plaza and the Empire State Building currently draw approximately 4 million and 2.5 million yearly visitors, respectively.

*Statistics from Downtown Alliance



For further information please contact:

Nelson Lee

917.885.0894 | nelson@nclcapa.com

Zachary Walter

201.787.6532 | Zach@nclcapa.com

BROADWAY RETAIL SPACE

26 Broadway

New York, NY 10004



NCL Capital Advisors

9/11 Memorial Museum

The 9/11 Memorial Museum will have 110,000 square feet of exhibition space and will be located in the heart of the World Trade Center site. The exhibits will tell the story of 9/11 through multimedia displays, archives, narratives and a collection of authentic artifacts. Additionally, the 9/11 Memorial has seen more than 7 million visitors since it opened in September 2011.



For further information please contact:

Nelson Lee

917.885.0894 | nelson@nclcapa.com

Zachary Walter

201.787.6532 | Zach@nclcapa.com

BROADWAY RETAIL SPACE

26 Broadway

New York, NY 10004



NCL Capital Advisors

Transportation

Construction continues on the above-ground oculus of the Santiago Calatrava designed World Trade Center Transportation Hub. The hub will house the PATH station and connect underground to the Fulton Center on the east Brookfield Place on the west, and to retail within the structure. The Fulton Center will serve as an essential transportation and retail center in Lower Manhattan, providing easy transfer to eleven (11) different subway lines. 300,000 daily customers are projected to use the hub daily. The exterior and interior restoration of the 19th Century Corbin Building is now complete and the entire project is on track to be completed in June of 2014. New York City's long awaited bike sharing system, Citibike, is well serviced in the Lower Manhattan area. There are twenty-five (25) stations south of Chambers Street. They are located throughout Lower Manhattan and hold between 32-59 bikes, with the largest station located at the Staten Island Ferry Terminal.



World Trade Center Transportation Hub

For further information please contact:

Nelson Lee

917.885.0894 | nelson@nclcapa.com

Zachary Walter

201.787.6532 | Zach@nclcapa.com