

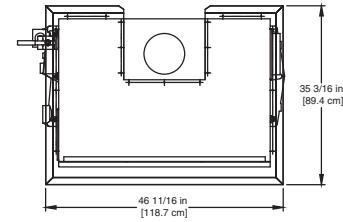
### CODE OPTIONS

<b>CSD-1</b>	UTC Lockout/Reset Control Manual Reset LWCO
<b>Kentucky</b> (Water Htr Only)	200°F Maximum Operating Control and High Limit

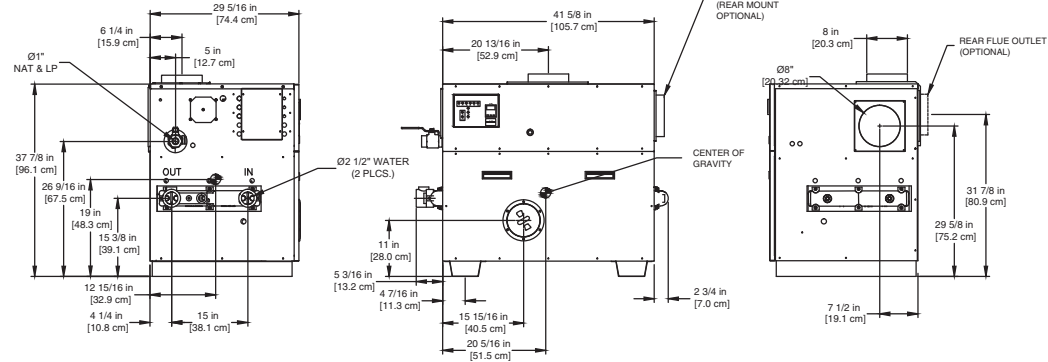
**NOTE:** Dimensions are approximate and should not be used to "rough-in" equipment.

\* Add circulator amps.

\*\*For incoming gas pressures lower than 7" WC natural or 11" WC propane, consult factory.



OUTDOOR TOP PANEL



RSUB-30-D

### AGA CERTIFIED RATINGS & CAPACITIES

<b>Fuel Type</b>	Natural/Propane Gas	<b>Boiler FLA</b>	5.9*
<b>Input BTU/hr.</b>	750,000 / 220 kW	<b>Min. Gas Pressure Required</b>	6" WC**
<b>Output BTU/hr.</b>	637,500 / 187 kW	<b>Max. Gas Pressure Allowed</b>	14" WC
<b>Electrical Requirements</b>	120VAC/ 1 ph/ 60 hz/ 8 amp	<b>Operating Weight</b>	573 lbs. / 260 kg.

### TEMPERATURE RISE / PRESSURE DROP

20°F / 11.1°C		25°F / 13.9°C		30°F / 16.7°C		35°F / 19.4°C					
Flow Rate	Pressure Drop	Flow Rate	Pressure Drop	Flow Rate	Pressure Drop	Flow Rate	Pressure Drop				
GPM	L/s	Ft	kPa	GPM	L/s	Ft	kPa	GPM	L/s	Ft	kPa
63.8	4.0	1.38	4.1	51.1	3.2	0.91	2.7	42.6	2.7	0.65	1.9

### BOILER TRIM & CONTROLS

<b>Main Gas Valve</b>	Honeywell V8944 1"	<b>Pilot Valve</b>	Honeywell VR8205
<b>Firing Valve</b>	Honeywell B200T1033 1"	<b>Air Switch</b>	Cleveland RSS-495
<b>Safety Valve</b>	ASCO L8214G 1"	<b>Blower Motor</b>	1/4 hp - FLA 5.1
<b>Ignition Control</b>	UTC 1003-61A	<b>Relief Valve - DW</b>	3/4" x 3/4" set @ 125 psi
<b>Operating Control</b>	Tekmar BTC-2PA	<b>Relief Valve - DB</b>	3/4" x 3/4" set @ 50 psi
<b>High Limit</b>	Honeywell L4008E	<b>Flow Switch</b>	TACO IFS-1

### RECOVERY CAPACITY

40°F	22°C	60°F	33°C	80°F	44°C	100°F	56°C	120°F	67°C	140°F	78°C
1913	7243	1276	4828	957	3621	765	2897	638	2414	547	2069

### ASME

<b>ASME Sect IV Htg Surface</b>	77.0 Sq. Ft. / 7.15 Sq. M.	<b>Design Data</b>	Max. 160 psig & 250°F
<b>Water Volume</b>	3.96 gal / 14.9 l (liters)		

**REP FIRM** \_\_\_\_\_  
**SUBMITTED BY** \_\_\_\_\_  
**JOB NAME** \_\_\_\_\_  
**ARCHITECT** \_\_\_\_\_  
**ENGINEER** \_\_\_\_\_  
**CONTRACTOR** \_\_\_\_\_  
**DATE** \_\_\_\_\_

# DOMINATOR 750

**Category I or Category III Appliance**  
(See Installation and Operation Manual for venting information)

**RBI**® A Division of Mestek, Inc.  
Westfield, MA 01085  
(413) 568-9571