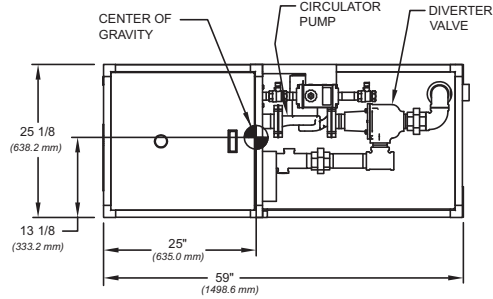


CODE OPTIONS

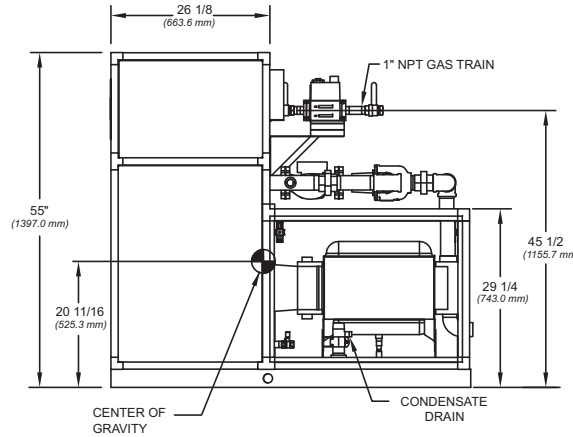
| | |
|-----------------|---|
| CSD-1 | Manual Reset LWCO |
| Kentucky | 200° F Maximum Operating Control and High Limit |

NOTE: Dimensions are approximate and should not be used to "rough-in" equipment.

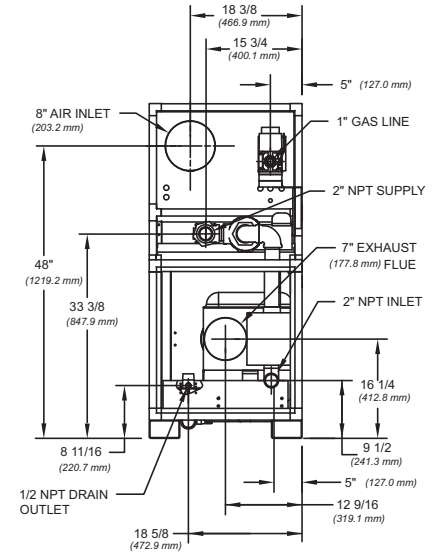
* Includes pump
 ** For incoming gas pressures lower than 2" W.C. natural or propane, consult factory.



TOP VIEW



SIDE VIEW



BACK VIEW

RSUB 97 REV. C

A.G.A. CERTIFIED RATINGS & CAPACITIES

| | | | |
|--------------------------------|---------------------|-----------------------------------|--------------------|
| Fuel Type | Natural/Propane Gas | Total FLA | 9* |
| Input BTU/hr. | 750,000 / 220 kW | Min. Gas Pressure Required | 2" W.C.** |
| Output BTU/hr. | 727, 500 / 213 kW | Max. Gas Pressure Allowed | 14" W.C. |
| Electrical Requirements | 120VAC/ 1 ph/ 60 hz | Operating Weight | 699 lbs. / 317 kg. |

TEMPERATURE RISE / PRESSURE DROP

| 20° F / 11.1° C | | | | 25° F / 13.9° C | | | |
|-----------------|-----|---------------|------|-----------------|-----|---------------|------|
| Flow Rate | | Total Loss*** | | Flow Rate | | Total Loss*** | |
| GPM | L/s | Ft | kPa | GPM | L/s | Ft | kPa |
| 65.3 | 4.1 | 10.5 | 31.4 | 52.2 | 3.3 | 7.7 | 23.0 |

***Includes primary, secondary, mixing valve and piping.

BOILER TRIM & CONTROLS

| | | | |
|--------------------------|------------------------|------------------------------|---------------------------|
| Main Gas Valve | Dungs DMV-SE512/11 | Manual Pilot Valve | Honeywell V8046C |
| Firing Valve | Honeywell B200T1033 1" | Air Switch | Cleveland RSS-495 |
| Ignition Control | Honeywell RM7895C | Blower Motor | Fasco 1/2 hp |
| Operating Control | HeatNet™ | Relief Valve - CW | 3/4" x 3/4" set @ 125 psi |
| High Limit | Jumo | Relief Valve - CB | 3/4" x 3/4" set @ 50 psi |
| Main Ball Valve | 1" | Flow Switch | IFS-1 |
| Pilot Cock | 1/4" Honeywell B528 | Solenoid Valve w/ Reg | CV100 |
| Economizer | RBI-1000 | Circulator | TACO 1400 - 70 - FLA - 5 |
| Mixing Valve | 2" | By-Pass Piping | 2" |

A.S.M.E.

| | | | |
|----------------------------------|-----------------------------|---------------------------------|------------------------|
| ASME Sect IV Htg Surface | 97.79 Sq. Ft. / 9.08 Sq. M. | Design Data | Max. 160 psig & 250° F |
| Water Volume | 3.7 gal. / 14.01 l (liters) | Secondary Heat Exchanger | 125 psi |
| Water Volume Secondary HX | 4.5 gal. / 17.03 l (liters) | | |

RECOVERY CAPACITY

| | | | | | | | | | | | |
|------|-------|------|-------|------|-------|-------|-------|-------|-------|-------|-------|
| 40°F | 22° C | 60°F | 33° C | 80°F | 44° C | 100°F | 56° C | 120°F | 67° C | 140°F | 78° C |
| 2183 | 8265 | 1456 | 5510 | 1092 | 4132 | 873 | 3306 | 728 | 2755 | 624 | 2361 |

| | | |
|---------------------|-------|--|
| REP FIRM | _____ | <p>FUTERA FUSION 750</p> <p>Category IV Appliance</p> <p>(see Installation and Operation Manual for venting information)</p> <p>RBI® A Division of Mestek, Inc. Westfield, MA 01085 (413) 568-9571</p> |
| SUBMITTED BY | _____ | |
| JOB NAME | _____ | |
| ARCHITECT | _____ | |
| ENGINEER | _____ | |
| CONTRACTOR | _____ | |
| DATE | _____ | |

SFTF-750-3