

CODE OPTIONS

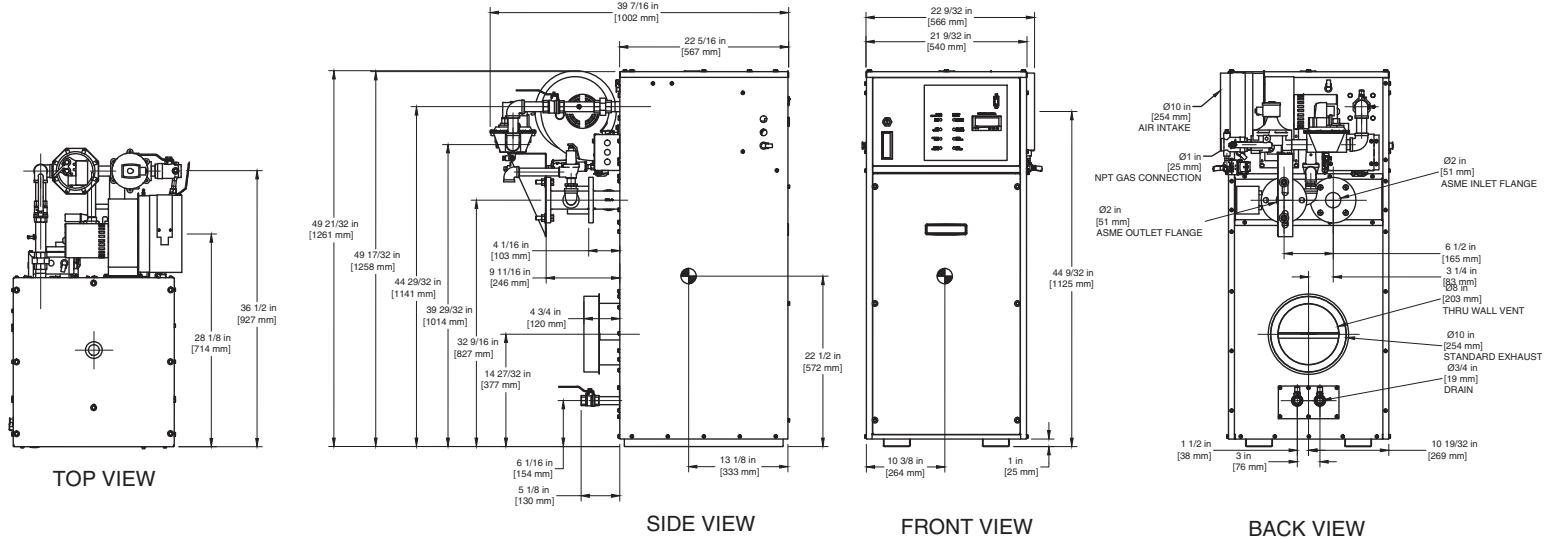
CSD-1	Manual Reset LWCO
Kentucky	200° F Maximum Operating Control and High Limit

NOTE: Dimensions are approximate and should not be used to "rough-in" equipment.

* Add circulator amps.

**For incoming gas pressures lower than 5" W.C. natural or 11" W.C. propane, consult factory.

INDOOR UNIT



NOTE: DIMENSIONS ARE SUBJECT TO CHANGE WITHOUT NOTICE

A.G.A. CERTIFIED RATINGS & CAPACITIES

Fuel Type	Natural/Propane Gas	Boiler FLA	5.3*
Input BTU/hr.	750,000 / 220 kW	Min. Gas Pressure Required	5" W.C.**
Output BTU/hr.	637,500 / 187 kW	Max. Gas Pressure Allowed	14" W.C.
Electrical Requirements	120VAC/ 1 ph/ 60 hz/ 6 amp	Operating Weight	468 lbs. / 212 kg.

TEMPERATURE RISE / PRESSURE DROP

20° F / 11.1° C				25° F / 13.9° C				30° F / 16.7° C				35° F / 19.4° C			
Flow Rate		Pressure Drop		Flow Rate		Pressure Drop		Flow Rate		Pressure Drop		Flow Rate		Pressure Drop	
GPM	L/s	Ft	kPa	GPM	L/s	Ft	kPa	GPM	L/s	Ft	kPa	GPM	L/s	Ft	kPa
63.8	4.0	1.57	4.6	51.0	3.2	1.04	3.1	42.5	2.7	0.70	2.2	36.4	2.3	0.60	1.6

BOILER TRIM & CONTROLS

Main Gas Valve	V4944B	Main Ball Valve	1"
Firing Valve	1"	Solenoid Valve w/ Reg	CV100
Safety Valve	ASCO L8214G 1"	Air Switch	HUBA
Ignition Control	Honeywell RM7897C	Blower Motor	Fasco 1/4 hp - FLA 3.6
Operating Control (FB/FW)	Jumo	Relief Valve - FB	3/4" x 3/4" set @ 50 psi
High Limit	Honeywell L4008E	Relief Valve - FW	3/4" x 3/4" set @ 125 psi
		Flow Switch	TACO IFS-1

RECOVERY CAPACITY

40°F	22° C	60°F	33° C	80°F	44° C	100°F	56° C	120°F	67° C	140°F	78° C
1913	7243	1276	4828	957	3621	765	2897	638	2414	547	2069

A.S.M.E.

ASME Sect IV Htg Surface	97.79 Sq. Ft. / 9.08 Sq. M.	Design Data	Max. 160 psig & 250° F
Water Volume	3.7 gal / 14.0 l (liters)		

REP FIRM _____

SUBMITTED BY _____

JOB NAME _____

ARCHITECT _____

ENGINEER _____

CONTRACTOR _____

DATE _____

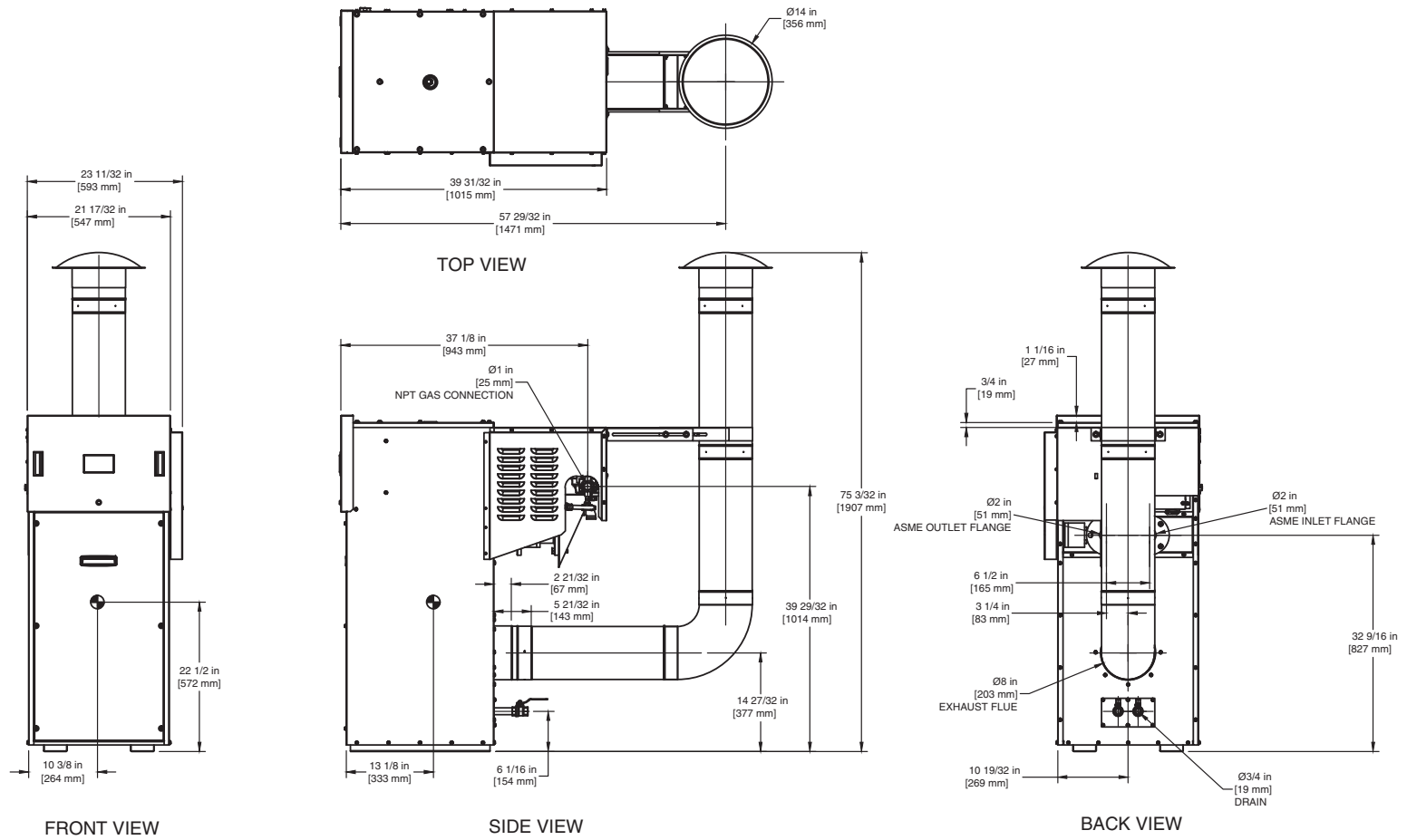
FUTERA II 750

Category I or Category III Appliance

(see Installation and Operation Manual for venting information)

A Division of Mestek, Inc.
Westfield, MA 01085
(413) 568-9571

OUTDOOR UNIT



NOTE: DIMENSIONS ARE SUBJECT TO CHANGE WITHOUT NOTICE