

## CODE OPTIONS

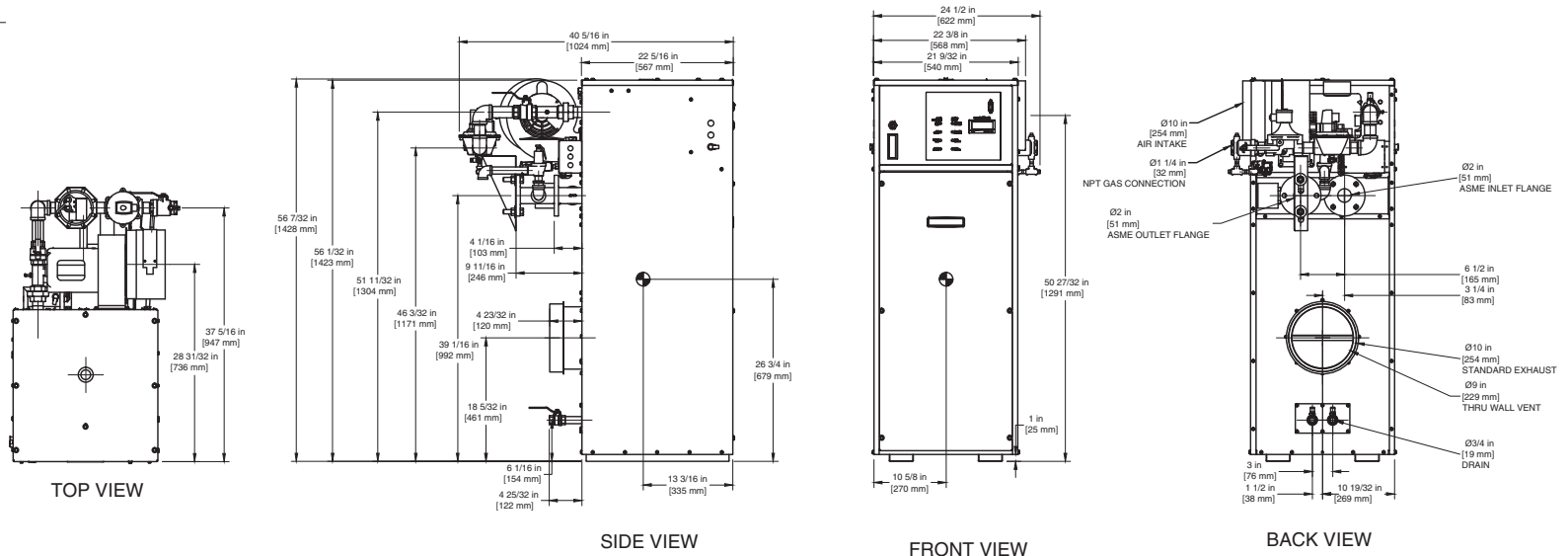
<b>CSD-1</b>	Manual Reset LWCO
<b>Kentucky</b>	200° F Maximum Operating Control and High Limit

**NOTE:** Dimensions are approximate and should not be used to "rough-in" equipment.

\* Add circulator amps.

\*\*For incoming gas pressures lower than 5" W.C. natural or 11" W.C. propane, consult factory.

# INDOOR UNIT



NOTE: DIMENSIONS ARE SUBJECT TO CHANGE WITHOUT NOTICE

## A.G.A. CERTIFIED RATINGS & CAPACITIES

<b>Fuel Type</b>	Natural/Propane Gas	<b>Boiler FLA</b>	5.3*
<b>Input BTU/hr.</b>	1,000,000 / 293 kW	<b>Min. Gas Pressure Required</b>	5" W.C.**
<b>Output BTU/hr.</b>	850,000 / 249 kW	<b>Max. Gas Pressure Allowed</b>	14" W.C.
<b>Electrical Requirements</b>	120VAC / 1 ph / 60 hz / 6 amp	<b>Operating Weight</b>	578 lbs. / 262 kg.

## TEMPERATURE RISE / PRESSURE DROP

20° F / 11.1° C				25° F / 13.9° C				30° F / 16.7° C				35° F / 19.4° C			
Flow Rate		Pressure Drop		Flow Rate		Pressure Drop		Flow Rate		Pressure Drop		Flow Rate		Pressure Drop	
GPM	L/s	Ft	kPa	GPM	L/s	Ft	kPa	GPM	L/s	Ft	kPa	GPM	L/s	Ft	kPa
85.0	5.4	3.44	10.1	68.0	4.3	2.27	6.7	56.7	3.6	1.60	4.8	48.6	3.1	1.20	3.6

## BOILER TRIM & CONTROLS

<b>Main Gas Valve</b>	V4944B	<b>Main Ball Valve</b>	1 1/4"
<b>Firing Valve</b>	1 1/4"	<b>Solenoid Valve w/ Reg</b>	CV100
<b>Safety Valve</b>	ASCO L8214G 1 1/4"	<b>Air Switch</b>	HUBA
<b>Ignition Control</b>	Honeywell RM 7897C	<b>Blower Motor</b>	Fasco 1/4 hp - FLA 3.6
<b>Operating Control (FB/FW)</b>	Jumo	<b>Relief Valve - FB</b>	3/4" x 1" set @ 50 psi
<b>High Limit</b>	Honeywell L4008E	<b>Relief Valve - FW</b>	3/4" x 3/4" set @ 125 psi
		<b>Flow Switch</b>	TACO IFS-1

## RECOVERY CAPACITY

40°F	22° C	60°F	33° C	80°F	44° C	100°F	56° C	120°F	67° C	140°F	78° C
2551	9657	1701	6438	1276	4828	1020	3863	850	3219	729	2759

## A.S.M.E.

<b>ASME Sect IV Htg Surface</b>	126.07 Sq. Ft. / 11.71 Sq. M.	<b>Design Data</b>	Max. 160 psig & 250° F
<b>Water Volume</b>	4.0 gal / 15.2 l (liters)		

REP FIRM \_\_\_\_\_  
 SUBMITTED BY \_\_\_\_\_  
 JOB NAME \_\_\_\_\_  
 ARCHITECT \_\_\_\_\_  
 ENGINEER \_\_\_\_\_  
 CONTRACTOR \_\_\_\_\_  
 DATE \_\_\_\_\_

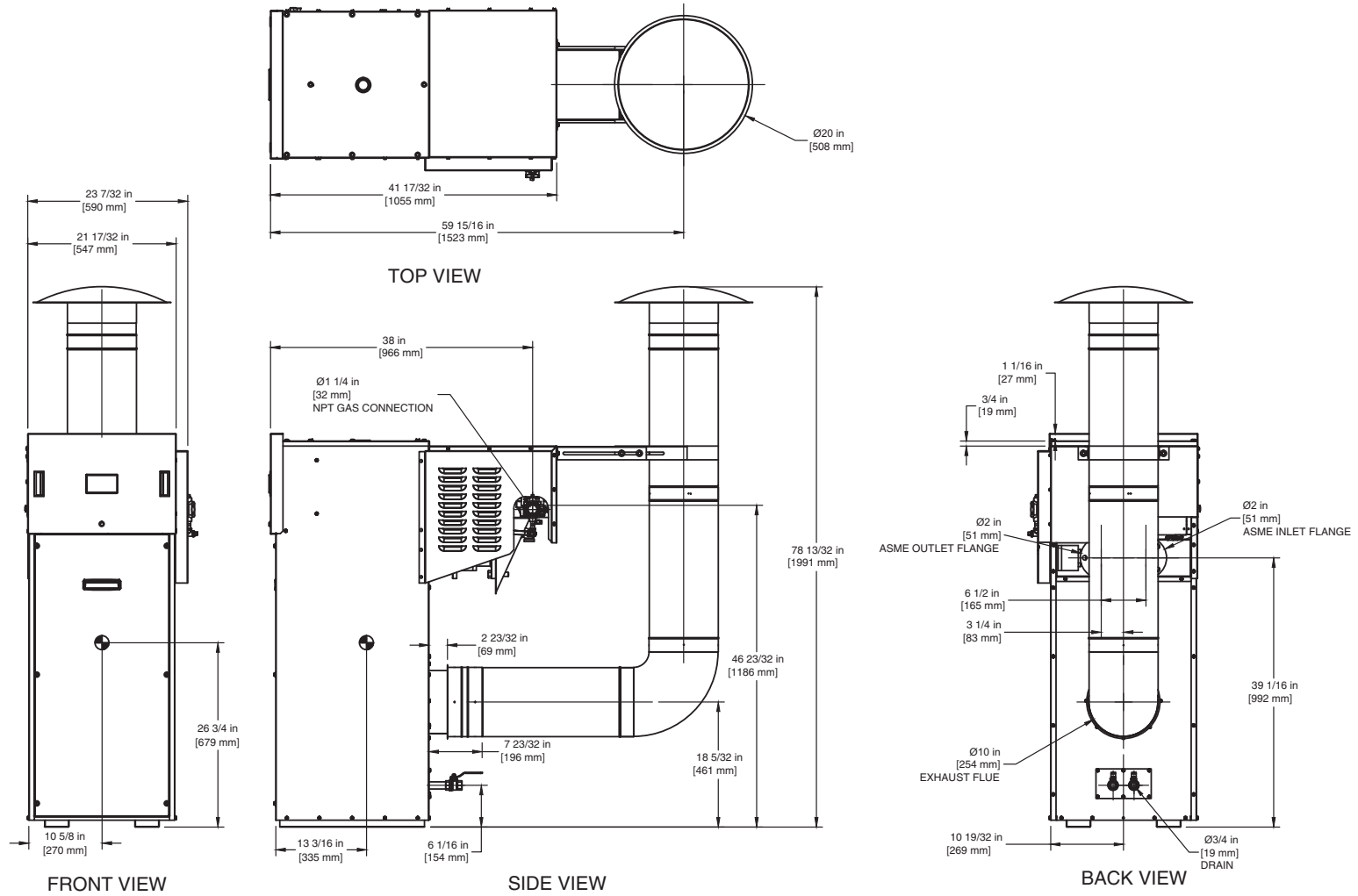
# FUTERA II 1000

**Category I or Category III Appliance**  
 (see Installation and Operation Manual for venting information)



A Division of Mestek, Inc.  
 Westfield, MA 01085  
 (413) 568-9571

# OUTDOOR UNIT



NOTE: DIMENSIONS ARE SUBJECT TO CHANGE WITHOUT NOTICE