

CODE OPTIONS

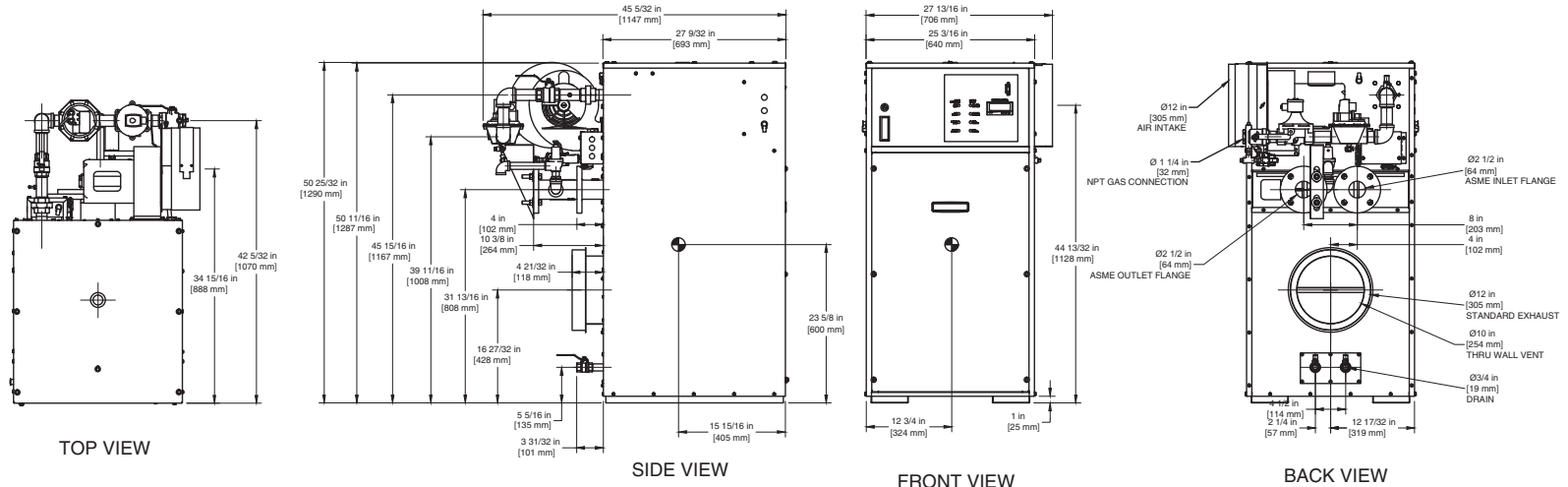
CSD-1	Manual Reset LWCO
Kentucky	200° F Maximum Operating Control and High Limit

NOTE: Dimensions are approximate and should not be used to "rough-in" equipment.

* Add circulator amps.

**For incoming gas pressures lower than 5" W.C. natural or 11" W.C. propane, consult factory.

INDOOR UNIT



NOTE: DIMENSIONS ARE SUBJECT TO CHANGE WITHOUT NOTICE

A.G.A. CERTIFIED RATINGS & CAPACITIES

Fuel Type	Natural/Propane Gas	Boiler FLA	9.9*
Input BTU/hr.	1,250,000 / 366 kW	Min. Gas Pressure Required	5" W.C.**
Output BTU/hr.	1,062,500 / 311 kW	Max. Gas Pressure Allowed	14" W.C.
Electrical Requirements	120VAC/ 1 ph/ 60 Hz/ 10 amp	Operating Weight	673 lbs. / 305 kg.

TEMPERATURE RISE / PRESSURE DROP

20° F / 11.1° C				25° F / 13.9° C				30° F / 16.7° C				35° F / 19.4° C			
Flow Rate		Pressure Drop		Flow Rate		Pressure Drop		Flow Rate		Pressure Drop		Flow Rate		Pressure Drop	
GPM	L/s	Ft	kPa	GPM	L/s	Ft	kPa	GPM	L/s	Ft	kPa	GPM	L/s	Ft	kPa
106.3	6.7	2.11	6.2	85.0	5.4	1.40	4.1	70.8	4.5	1.00	2.9	60.7	3.8	0.70	2.2

BOILER TRIM & CONTROLS

Main Gas Valve	V4944B	Solenoid Valve w/ Reg	CV100
Firing Valve	1 1/4"	Main Ball Valve	1 1/4"
Safety Valve	ASCO L8214G 1 1/4"	Air Switch	HUBA
Ignition Control	Honeywell RM7897C	Blower Motor	Fasco 1/2 hp - FLA 8.2
Operating Control (FB/FW)	Jumo	Relief Valve - FB	3/4" x 1" set @ 50 psi
High Limit	Honeywell L4008E	Relief Valve - FW	3/4" x 3/4" set @ 125 psi
		Flow Switch	TACO IFS-1

RECOVERY CAPACITY

40° F	22° C	60° F	33° C	80° F	44° C	100° F	56° C	120° F	67° C	140° F	78° C
3189	12071	2126	8047	1594	6035	1276	4828	1063	4024	911	3449

A.S.M.E.

ASME Sect IV Htg Surface	133.76 Sq. Ft. / 12.43 Sq. M.	Design Data	Max. 160 psig & 250° F
Water Volume	4.7 gal / 17.8 l (liters)		

REP FIRM _____
SUBMITTED BY _____
JOB NAME _____
ARCHITECT _____
ENGINEER _____
CONTRACTOR _____
DATE _____

FUTERA II 1250

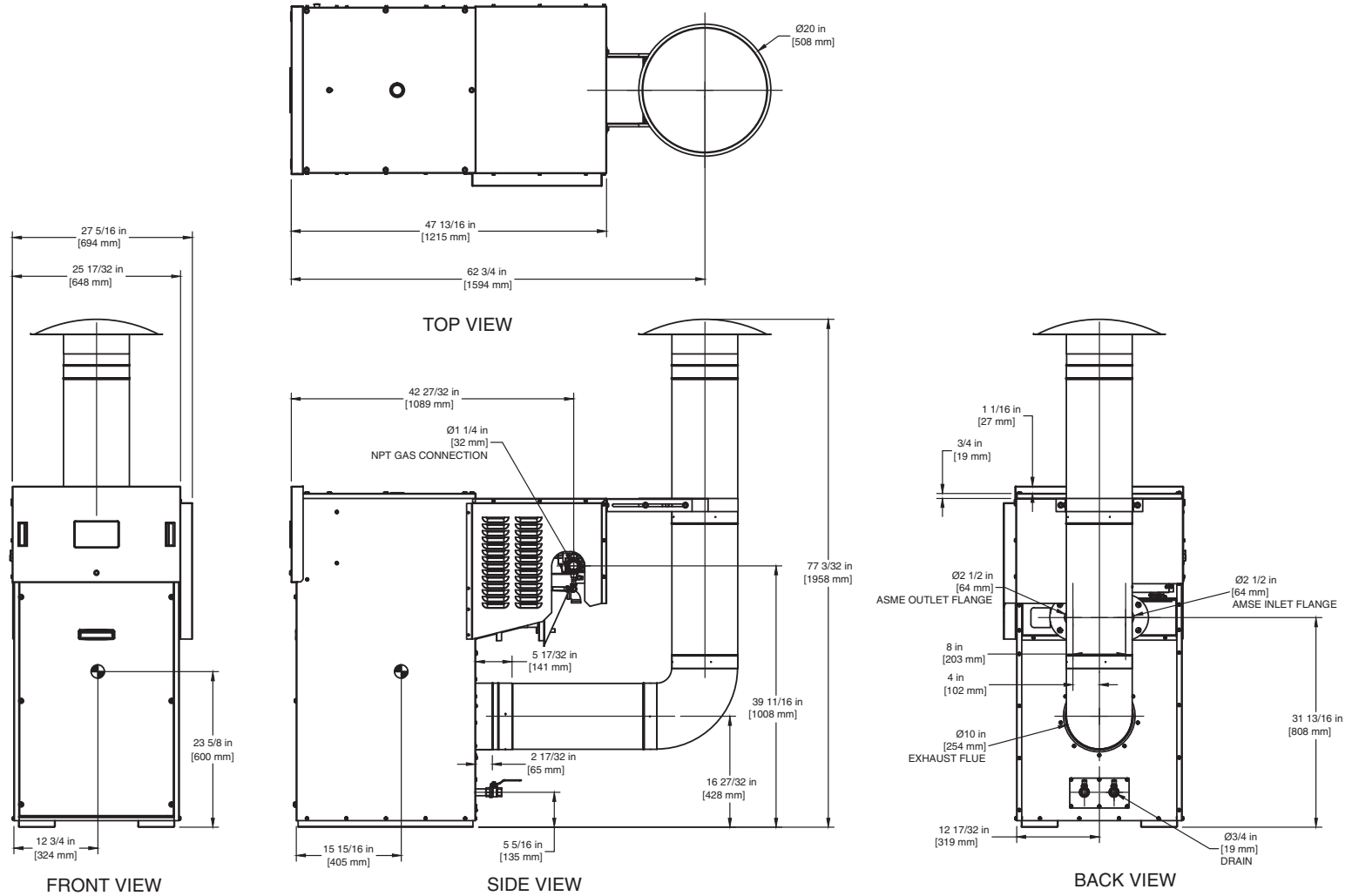
Category I or Category III Appliance

(see Installation and Operation Manual for venting information)



A Division of Mestek, Inc.
Westfield, MA 01085
(413) 568-9571

OUTDOOR UNIT



NOTE: DIMENSIONS ARE SUBJECT TO CHANGE WITHOUT NOTICE