

### CODE OPTIONS

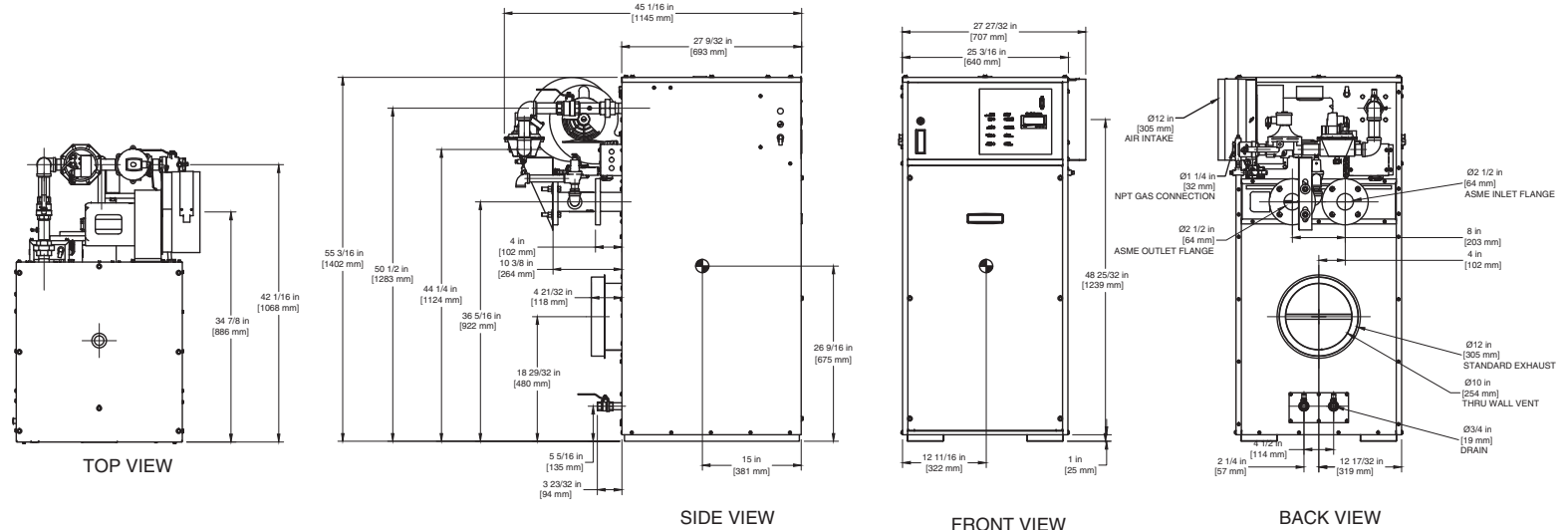
<b>CSD-1</b>	Manual Reset LWCO
<b>Kentucky</b>	200° F Maximum Operating Control and High Limit

**NOTE:** Dimensions are approximate and should not be used to "rough-in" equipment.

\* Add circulator amps.

\*\*For incoming gas pressures lower than 5" W.C. natural or 11" W.C. propane, consult factory.

# INDOOR UNIT



NOTE: DIMENSIONS ARE SUBJECT TO CHANGE WITHOUT NOTICE

### A.G.A. CERTIFIED RATINGS & CAPACITIES

<b>Fuel Type</b>	Natural/Propane Gas	<b>Boiler FLA</b>	9.9*
<b>Input BTU/hr.</b>	1,500,000 / 440 kW	<b>Min. Gas Pressure Required</b>	5" W.C.**
<b>Output BTU/hr.</b>	1,275,000 / 374 kW	<b>Max. Gas Pressure Allowed</b>	14" W.C.
<b>Electrical Requirements</b>	120VAC/ 1 ph/ 60 hz/ 10 amp	<b>Operating Weight</b>	732 lbs. / 332 kg.

### TEMPERATURE RISE / PRESSURE DROP

20° F / 11.1° C				25° F / 13.9° C				30° F / 16.7° C				35° F / 19.4° C			
Flow Rate		Pressure Drop		Flow Rate		Pressure Drop		Flow Rate		Pressure Drop		Flow Rate		Pressure Drop	
GPM	L/s	Ft	kPa	GPM	L/s	Ft	kPa	GPM	L/s	Ft	kPa	GPM	L/s	Ft	kPa
127.5	8.1	3.57	10.5	102.0	6.4	2.36	7.0	85.0	5.4	1.70	5.0	72.9	4.6	1.30	3.7

### BOILER TRIM & CONTROLS

<b>Main Gas Valve</b>	V4944B	<b>Main Ball Valve</b>	1 1/4"
<b>Firing Valve</b>	1 1/4"	<b>Solenoid Valve w/ Reg</b>	CV100
<b>Safety Valve</b>	ASCO L8214G 1 1/4"	<b>Air Switch</b>	HUBA
<b>Ignition Control</b>	Honeywell RM7897C	<b>Blower Motor</b>	Fasco 1/2 hp - FLA 8.2
<b>Operating Control (FB/FW)</b>	Jumo	<b>Relief Valve - FB</b>	1" x 1 1/4" set @ 50 psi
<b>High Limit</b>	Honeywell L4008E	<b>Relief Valve - FW</b>	3/4" x 3/4" set @ 125 psi
		<b>Flow Switch</b>	TACO IFS-1

### RECOVERY CAPACITY

40°F	22° C	60°F	33° C	80°F	44° C	100°F	56° C	120°F	67° C	140°F	78° C
3827	14485	2551	9657	1913	7243	1531	5794	1276	4828	1093	4139

### A.S.M.E.

<b>ASME Sect IV Htg Surface</b>	161.16 Sq. Ft. / 14.97 Sq. M.	<b>Design Data</b>	Max. 160 psig & 250° F
<b>Water Volume</b>	5.0 gal / 18.9 l (liters)		

**REP FIRM** \_\_\_\_\_  
**SUBMITTED BY** \_\_\_\_\_  
**JOB NAME** \_\_\_\_\_  
**ARCHITECT** \_\_\_\_\_  
**ENGINEER** \_\_\_\_\_  
**CONTRACTOR** \_\_\_\_\_  
**DATE** \_\_\_\_\_

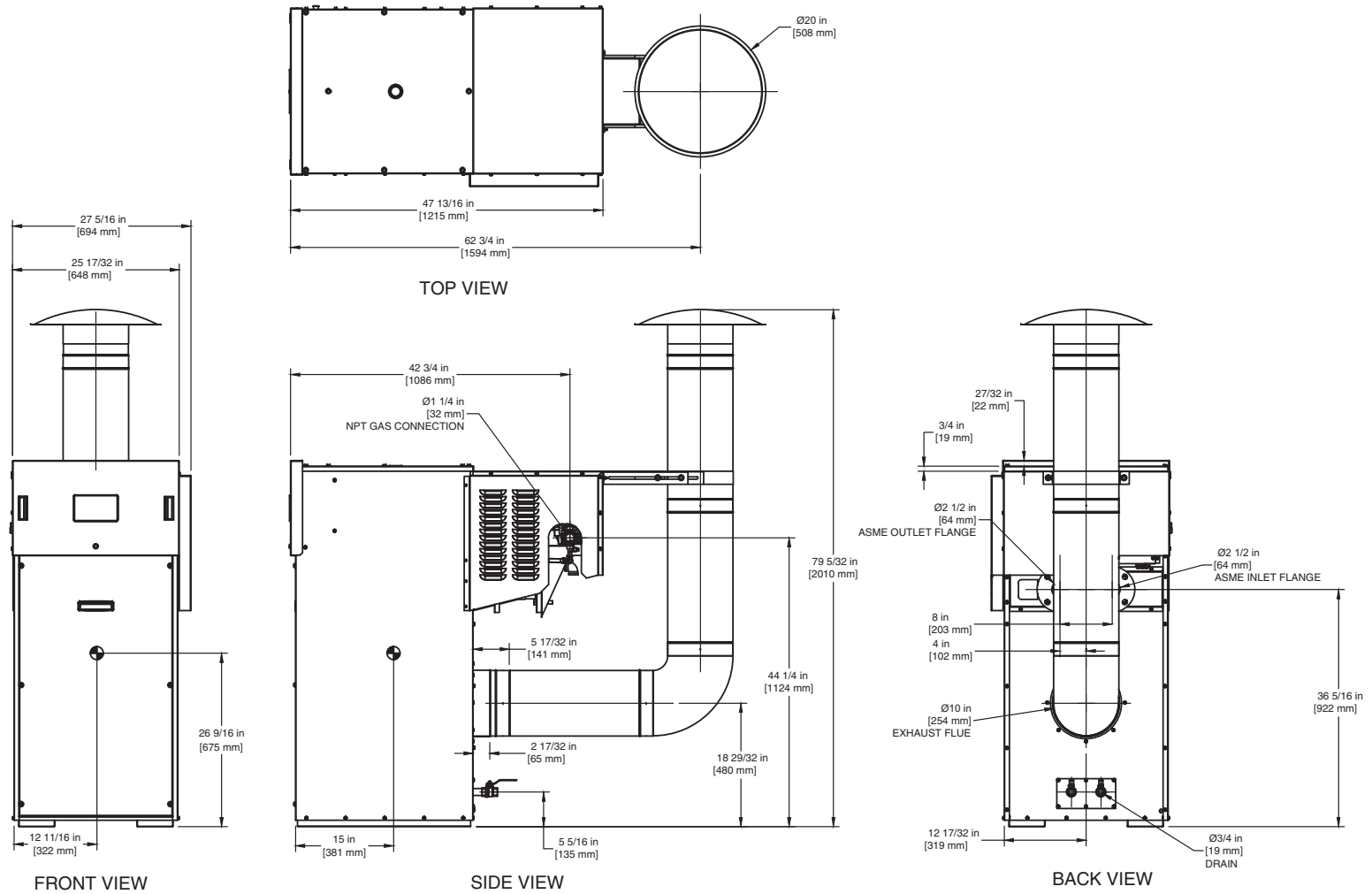
## FUTERA II 1500

**Category I or Category III Appliance**  
(see Installation and Operation Manual for venting information)



A Division of Mestek, Inc.  
Westfield, MA 01085  
(413) 568-9571

# OUTDOOR UNIT



NOTE: DIMENSIONS ARE SUBJECT TO CHANGE WITHOUT NOTICE