

CODE OPTIONS

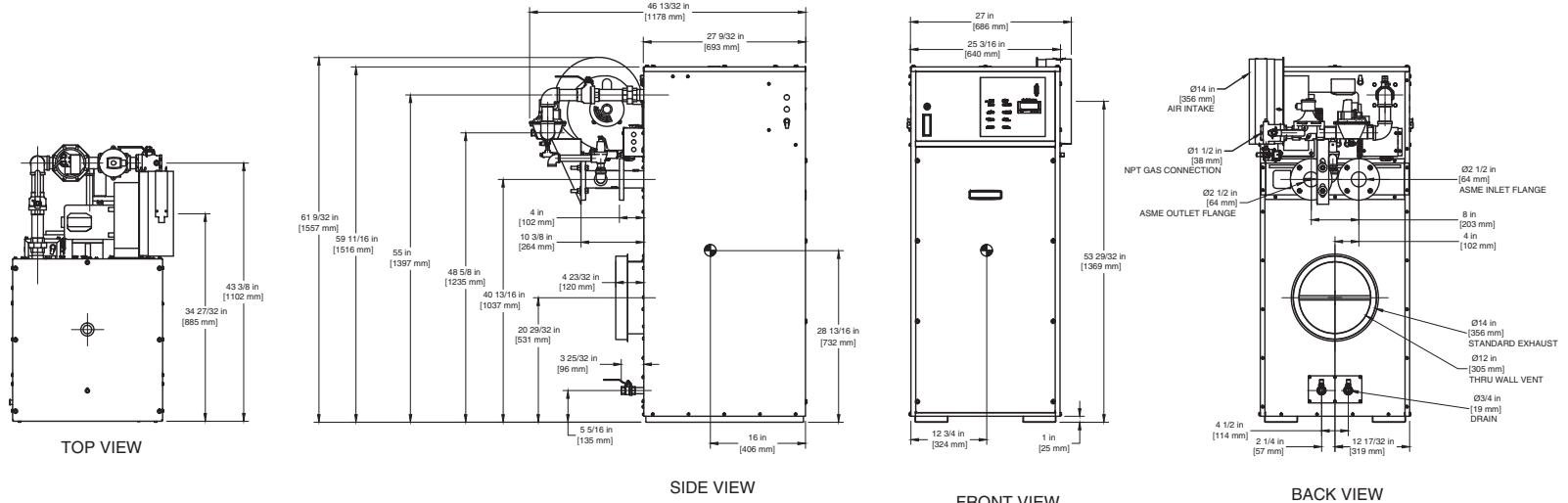
CSD-1	Manual Reset LWCO
Kentucky	200° F Maximum Operating Control and High Limit

NOTE: Dimensions are approximate and should not be used to "rough-in" equipment.

* Add circulator amps.

**For incoming gas pressures lower than 5" W.C. natural or 11" W.C. propane, consult factory.

INDOOR UNIT



NOTE: DIMENSIONS ARE SUBJECT TO CHANGE WITHOUT NOTICE

A.G.A. CERTIFIED RATINGS & CAPACITIES

Fuel Type	Natural/Propane Gas	Boiler FLA	11.5*
Input BTU/hr.	1,750,000 / 513 kW	Min. Gas Pressure Required	5" W.C.**
Output BTU/hr.	1,487,500 / 436 kW	Max. Gas Pressure Allowed	14" W.C.
Electrical Requirements	120VAC / 1 ph / 60 hz / 12 amp	Operating Weight	799 lbs. / 362 kg.

TEMPERATURE RISE / PRESSURE DROP

25° F / 13.9° C				30° F / 16.7° C				35° F / 19.4° C			
Flow Rate		Pressure Drop		Flow Rate		Pressure Drop		Flow Rate		Pressure Drop	
GPM	L/s	Ft	kPa	GPM	L/s	Ft	kPa	GPM	L/s	Ft	kPa
119.0	7.5	3.67	10.8	99.2	6.3	2.60	7.7	85.0	5.4	2.00	5.8

BOILER TRIM & CONTROLS

Main Gas Valve	V4944B	Main Ball Valve	1 1/2"
Firing Valve	1 1/2"	Solenoid Valve w/ Reg	CV100
Safety Valve	ASCO L8214G 1 1/2"	Air Switch	HUBA
Ignition Control	Honeywell RM7897C	Blower Motor	Marathon 3/4 hp - FLA 9.8
Operating Control (FB/FW)	Jumo	Relief Valve - FB	1" x 1 1/4" set @ 50 psi
High Limit	Honeywell L4008E	Relief Valve - FW	3/4" x 3/4" set @ 125 psi
		Flow Switch	TACO IFS-1

A.S.M.E.

ASME Sect IV Htg Surface	188.57 Sq. Ft. / 17.52 Sq. M.	Design Data	Max. 160 psig & 250° F
Water Volume	5.3 gal / 20.1 l (liters)		

RECOVERY CAPACITY

40° F	22° C	60° F	33° C	80° F	44° C	100° F	56° C	120° F	67° C	140° F	78° C
4464	16899	2976	11266	2232	8450	1786	6760	1488	5633	1276	4828

REP FIRM _____
SUBMITTED BY _____
JOB NAME _____
ARCHITECT _____
ENGINEER _____
CONTRACTOR _____
DATE _____

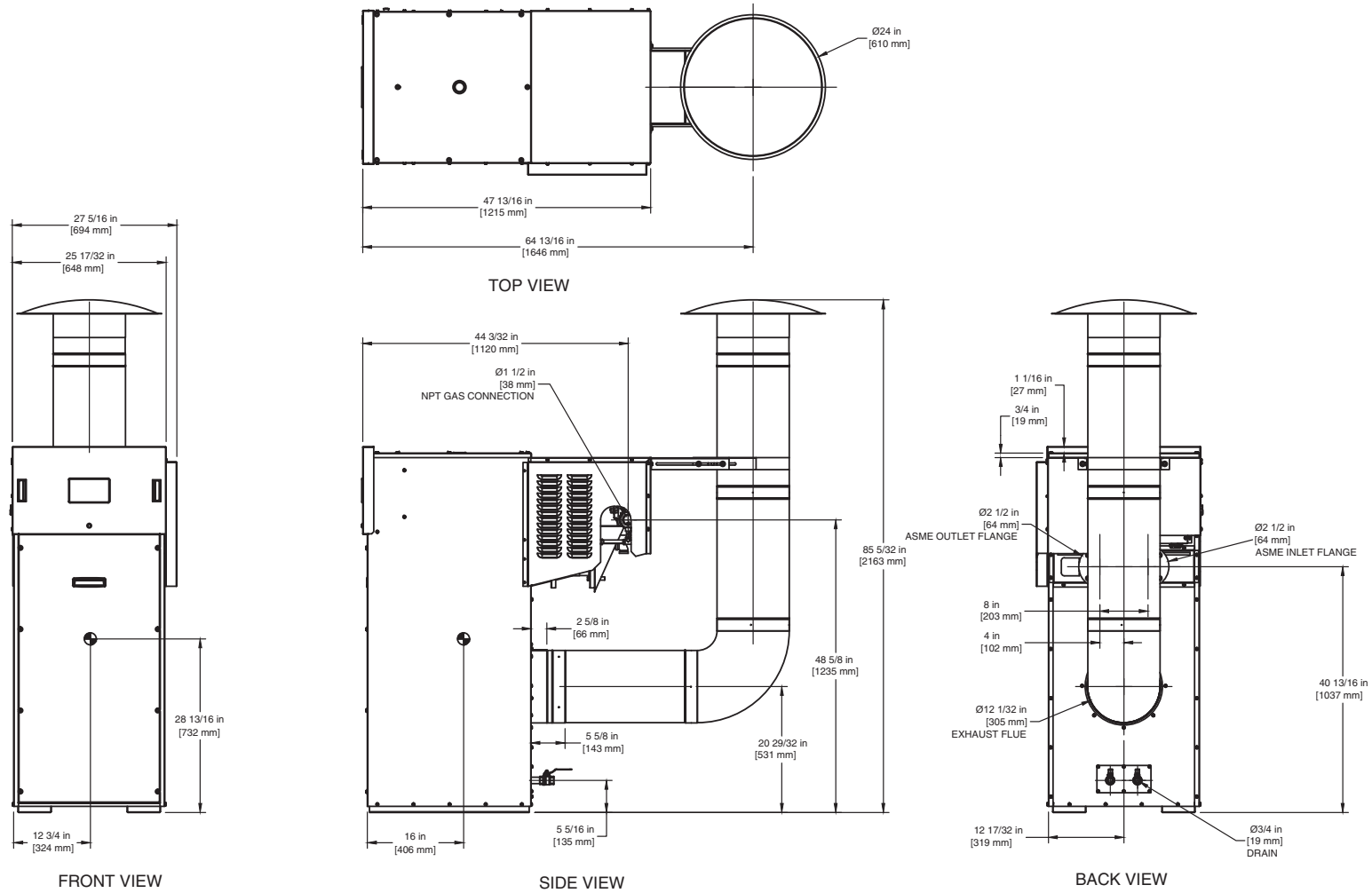
FUTERA II 1750

Category I or Category III Appliance
(see Installation and Operation Manual for venting information)



A Division of Mestek, Inc.
Westfield, MA 01085
(413) 568-9571

OUTDOOR UNIT



NOTE: DIMENSIONS ARE SUBJECT TO CHANGE WITHOUT NOTICE