

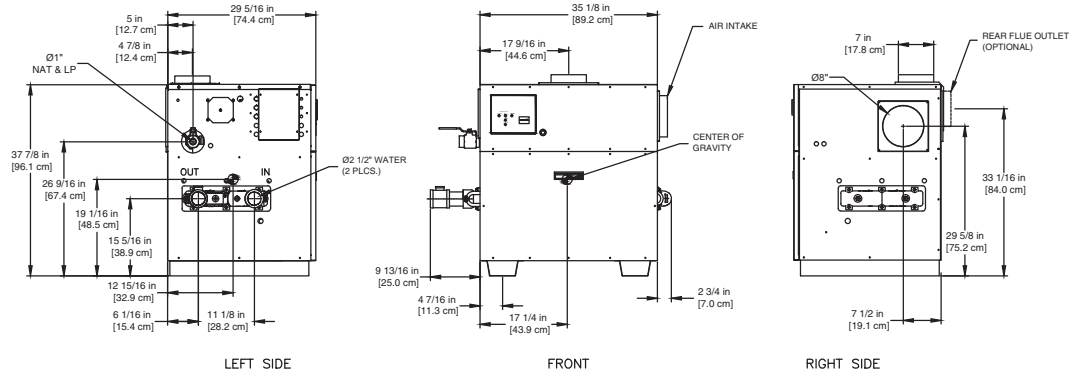
CODE OPTIONS

CSD-1	UTC Lockout/Reset Control Manual Reset LWCO
Kentucky (Water Htr Only)	200°F Maximum Operating Control and High Limit

NOTE: Dimensions are approximate and should not be used to "rough-in" equipment.

* Add circulator amps.

**For incoming gas pressures lower than 6" WC natural or 11" WC propane, consult factory.



RSUB-16-E

AGA CERTIFIED RATINGS & CAPACITIES

Fuel Type	Natural/Propane Gas	Boiler FLA	3.8*
Input BTU/hr.	600,000 / 176 kW	Min. Gas Pressure Required	6" WC**
Output BTU/hr.	492,000 / 144 kW	Max. Gas Pressure Allowed	14" WC
Electrical Requirements	120VAC/ 1 ph/ 60 hz/ 6 amp	Operating Weight	523 lbs. / 237 kg.

TEMPERATURE RISE / PRESSURE DROP

15°F / 8.3°C				20°F / 11.1°C				25°F / 13.9°C				30°F / 16.7°C			
Flow Rate		Pressure Drop		Flow Rate		Pressure Drop		Flow Rate		Pressure Drop		Flow Rate		Pressure Drop	
GPM	L/s	Ft	kPa	GPM	L/s	Ft	kPa	GPM	L/s	Ft	kPa	GPM	L/s	Ft	kPa
65.6	4.1	1.84	5.4	49.2	3.1	1.08	3.2	39.4	2.5	0.71	2.1	32.8	2.1	0.51	1.5

BOILER TRIM & CONTROLS

Main Gas Valve	Honeywell V8944B 1"	Pilot Valve	Honeywell VR8205Q
Firing Valve	Honeywell B200T1033 1"	Air Switch	Cleveland RSS-495
Safety Valve	Honeywell V48A 1"	Blower Motor	1/4 hp - FLA 3.0
Ignition Control	UTC 1003-61A	Relief Valve - LW	3/4" x 3/4" set @ 125 psi
Operating Control (LB/LW)	Jumo	Relief Valve - LB	3/4" x 3/4" set @ 50 psi
High Limit (LB/LW)	Jumo	Flow Switch	TACO IFS-1

RECOVERY CAPACITY

40°F	22°C	60°F	33°C	80°F	44°C	100°F	56°C	120°F	67°C	140°F	78°C
1477	5590	984	3726	738	2795	591	2236	492	1863	422	1597

ASME

ASME Sect IV Htg Surface	51.3 Sq. Ft. / 4.77 Sq. M.	Design Data	Max. 160 psig & 250°F
Water Volume	1.58 gal / 5.9 l (liters)		

REP FIRM _____
SUBMITTED BY _____
JOB NAME _____
ARCHITECT _____
ENGINEER _____
CONTRACTOR _____
DATE _____

LCD 600

Category I or Category III Appliance
(See Installation and Operation Manual for venting information)



A Division of Mestek, Inc.
Westfield, MA 01085
(413) 568-9571