

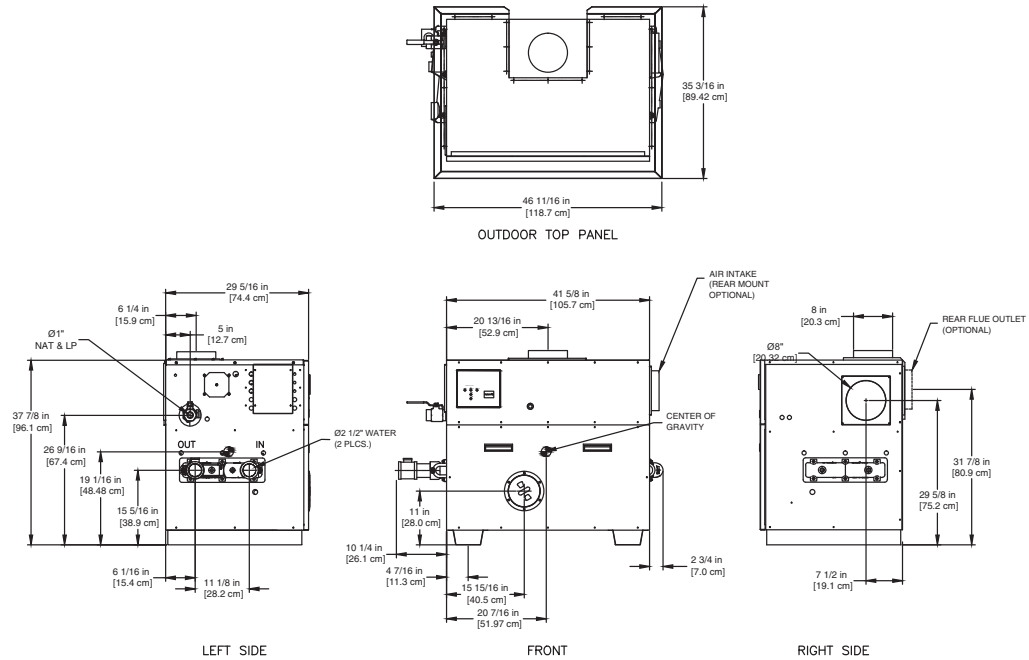
CODE OPTIONS

| | |
|-------------------------------------|---|
| CSD-1 | UTC Lockout/Reset Control Manual Reset LWCO |
| Kentucky (Water Htr Only) | 200°F Maximum Operating Control and High Limit |

NOTE: Dimensions are approximate and should not be used to "rough-in" equipment.

* Add circulator amps.

**For incoming gas pressures lower than 6" WC natural or 11" WC propane, consult factory.



RSUB-17-E

AGA CERTIFIED RATINGS & CAPACITIES

| | | | |
|--------------------------------|----------------------------|-----------------------------------|--------------------|
| Fuel Type | Natural/Propane Gas | Boiler FLA | 5.9* |
| Input BTU/hr. | 750,000 / 220 kW | Min. Gas Pressure Required | 6" WC** |
| Output BTU/hr. | 615,000 / 180 kW | Max. Gas Pressure Allowed | 14" WC |
| Electrical Requirements | 120VAC/ 1 ph/ 60 hz/ 8 amp | Operating Weight | 554 lbs. / 251 kg. |

TEMPERATURE RISE / PRESSURE DROP

| 20°F / 11.1°C | | 25°F / 13.9°C | | 30°F / 16.7°C | | 35°F / 19.4°C | | | | | | | | | |
|---------------|---------------|---------------|---------------|---------------|---------------|---------------|---------------|------|-----|------|-----|------|-----|------|-----|
| Flow Rate | Pressure Drop | Flow Rate | Pressure Drop | Flow Rate | Pressure Drop | Flow Rate | Pressure Drop | | | | | | | | |
| GPM | L/s | Ft | kPa | GPM | L/s | Ft | kPa | GPM | L/s | Ft | kPa | GPM | L/s | Ft | kPa |
| 61.5 | 3.9 | 1.95 | 5.7 | 49.2 | 3.1 | 1.29 | 3.8 | 41.0 | 2.6 | 0.92 | 2.7 | 35.1 | 2.2 | 0.69 | 2.0 |

BOILER TRIM & CONTROLS

| | | | |
|----------------------------------|------------------------|--------------------------|---------------------------|
| Main Gas Valve | Honeywell V8944B 1" | Pilot Valve | Honeywell VR8205Q |
| Firing Valve | Honeywell B200T1033 1" | Air Switch | Cleveland RSS-495 |
| Safety Valve | Honeywell V48A 1" | Blower Motor | 1/4 hp - FLA 5.1 |
| Ignition Control | UTC 1003-61A | Relief Valve - LW | 3/4" x 3/4" set @ 125 psi |
| Operating Control (LB/LW) | Jumo | Relief Valve - LB | 3/4" x 3/4" set @ 50 psi |
| High Limit (LB/LW) | Jumo | Flow Switch | ITT FS4-3 |

RECOVERY CAPACITY

| 40°F | 22°C | 60°F | 33°C | 80°F | 44°C | 100°F | 56°C | 120°F | 67°C | 140°F | 78°C |
|------|------|------|------|------|------|-------|------|-------|------|-------|------|
| 1846 | 6987 | 1230 | 4658 | 923 | 3493 | 738 | 2795 | 615 | 2329 | 527 | 1996 |

ASME

| | | | |
|---------------------------------|----------------------------|--------------------|-----------------------|
| ASME Sect IV Htg Surface | 61.7 Sq. Ft. / 5.73 Sq. M. | Design Data | Max. 160 psig & 250°F |
| Water Volume | 1.71 gal / 6.5 l (liters) | | |

REP FIRM _____
 SUBMITTED BY _____
 JOB NAME _____
 ARCHITECT _____
 ENGINEER _____
 CONTRACTOR _____
 DATE _____

LCD 750

Category I or Category III Appliance
 (See Installation and Operation Manual for venting information)

RBI® A Division of Mestek, Inc.
 Westfield, MA 01085
 (413) 568-9571