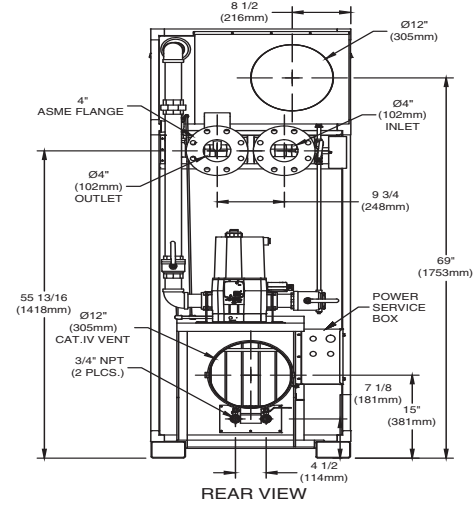
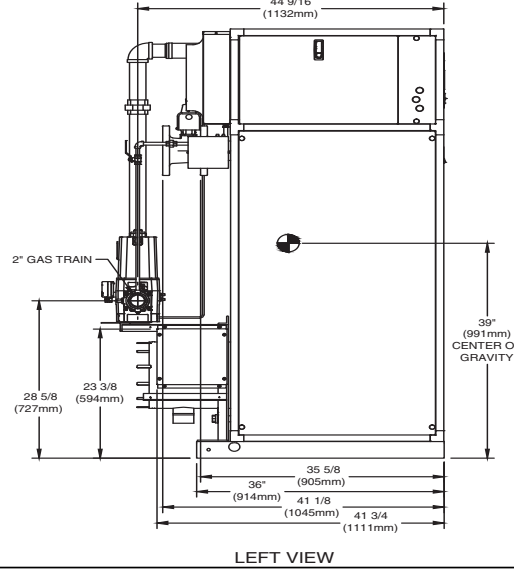
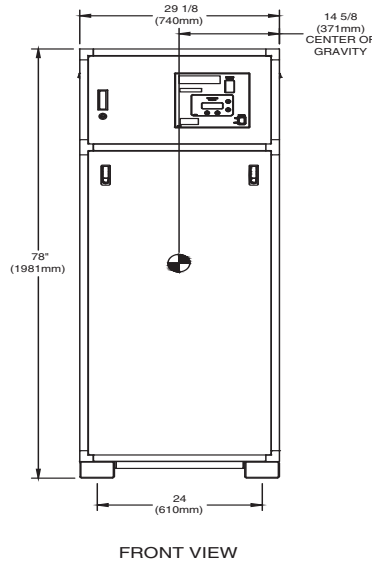


NOTE: Dimensions are approximate and should not be used to "rough-in" equipment.

* Add circulator amps.

**For incoming gas pressures lower than 3.5" WC natural, consult factory.

INDOOR UNIT



NOTE: DIMENSIONS ARE SUBJECT TO CHANGE WITHOUT NOTICE.

RSUB 149

AGA CERTIFIED RATINGS & CAPACITIES

Fuel Type	Natural	Boiler FLA	9.5* @ 230V
Input BTU/hr.	5,000,000 / 1,465 kW	Min. Gas Pressure Required	3.5" WC**
Output BTU/hr.	4,255,000 / 1,247 kW	Max. Gas Pressure Allowed	14" WC
Electrical Requirements	(L1, L2, L3, GND) 230 VAC/3 ph/60 hz	Operating Weight	1,684 lbs. / 765 kgs

TEMPERATURE RISE / PRESSURE DROP

30 °F / 16.7 °C		35 °F / 19.4 °C	
Flow Rate	Pressure Drop	Flow Rate	Pressure Drop
GPM	L/s	Ft	kPa
290*	18.3	21.20	62.5
248.6*	15.7*	19.7*	58.0*

*Flow exceeds recommended maximum use a greater temperature rise or consult manufacturer. Cupronickel heat exchanger standard.

BOILER TRIM & CONTROLS

Main Gas Valve Body	Dungs MBC 4000	High Limit (Manual Reset)	Jumo
Firing Valve	Honeywell B200T1066 2"	High Limit (Auto Reset)	Jumo
Main Ball Valve	2"	Blocked Flue Switch	HUBA
Manual Pilot Valve	1/4" Honeywell B528	Air Switch	HUBA
Solenoid Valve w/Reg	CV100	Blower Motor	American Fan 5 HP - FLA 9
Ignition Control	Honeywell RM7895C	Relief Valve - MB	1-1/2" x 2" set @ 50 psi
Operating Control	HeatNet®	Relief Valve - MW	1" x 1" set @ 125 psi
		Flow Switch	ITT FS8W

RECOVERY CAPACITY

40 °F	22 °C	60 °F	33 °C	80 °F	44 °C	100 °F	56 °C	120 °F	67 °C	140 °F	78 °C
12,770	48,340	8,513	32,227	6,385	24,170	5,180	19,336	4,257	16,113	3,649	13,811

ASME

ASME Sect IV Htg Surface	544.3 Sq Ft / 50.56 Sq M	Design Data	Max. 160 psig & 250 °F
Water Volume	15.6 gal / 59.12 (liters)		

REP FIRM _____

SUBMITTED BY _____

JOB NAME _____

ARCHITECT _____

ENGINEER _____

CONTRACTOR _____

DATE _____

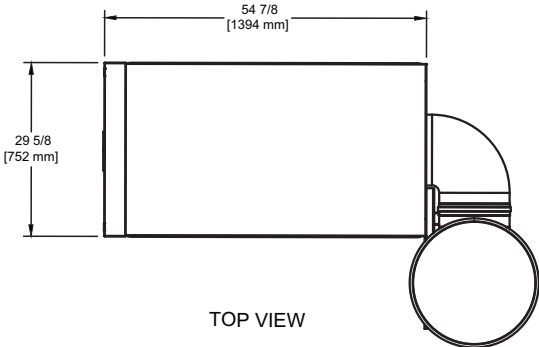
FUTERA XLF 5000

Category II or Category IV Appliance
(see Installation and Operation Manual for venting information)

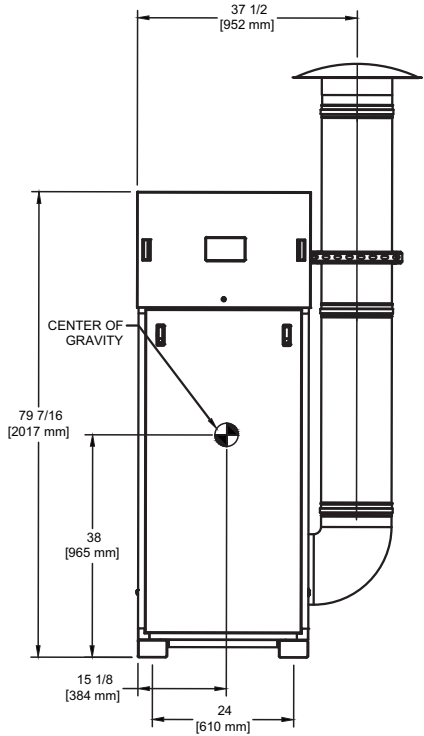


® A Division of Mestek, Inc.
Westfield, MA 01085
(413) 568-9571

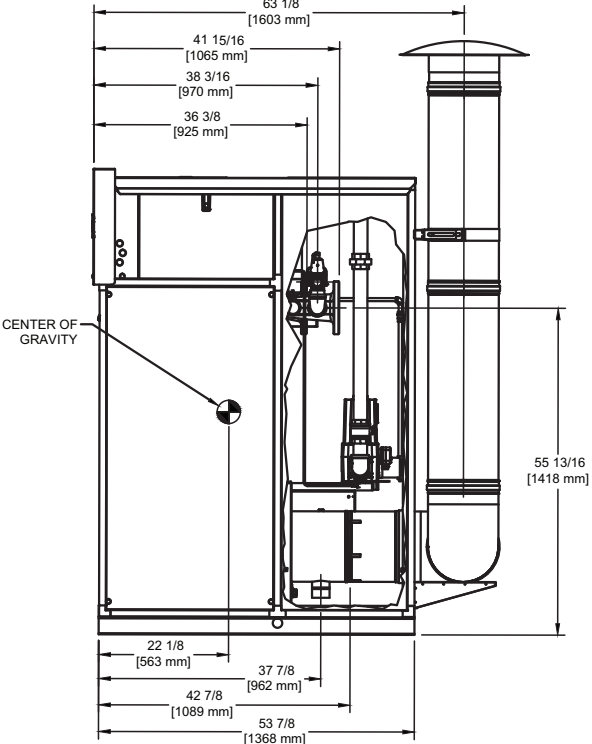
OUTDOOR UNIT



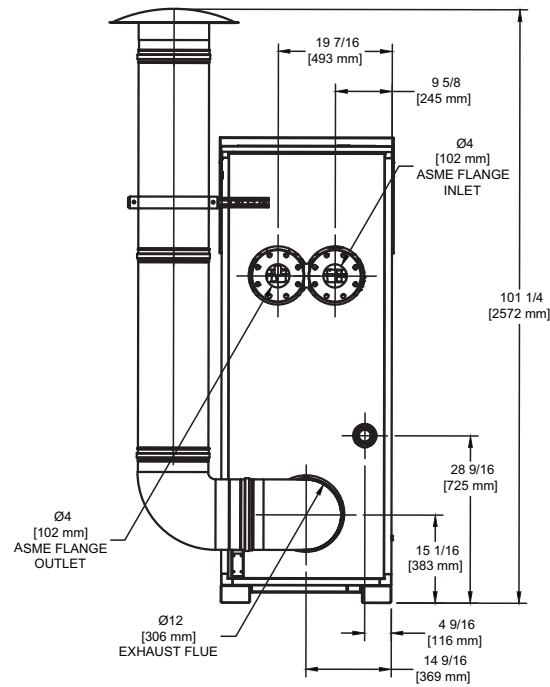
TOP VIEW



FRONT VIEW



SIDE VIEW



BACK VIEW

Note: Dimensions are subject to change without notice

RSUB 150-B

