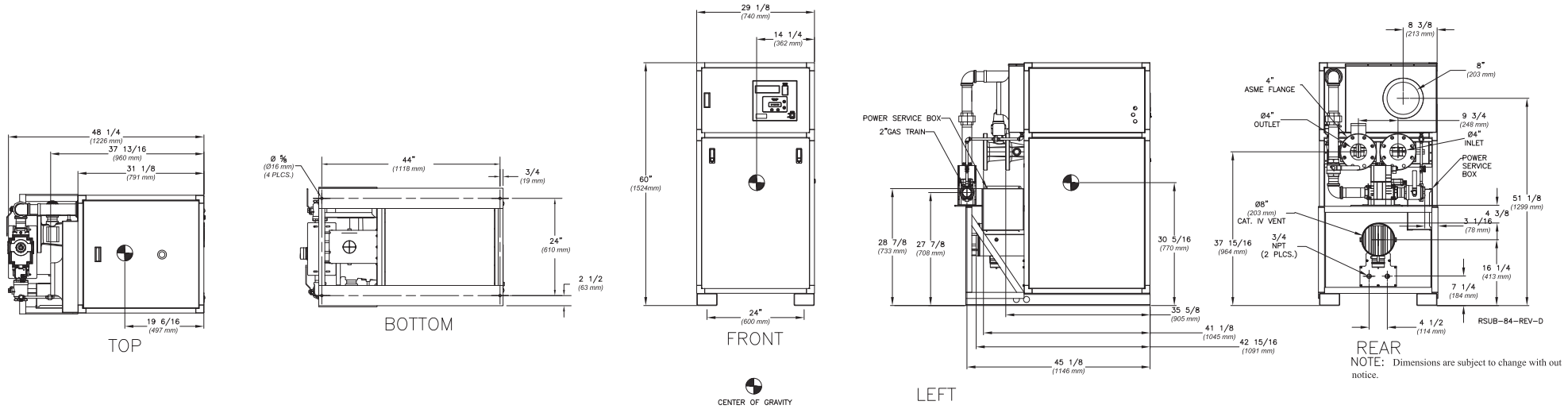


NOTE: Dimensions are approximate and should not be used to "rough-in" equipment.

* Add circulator amps.

**For incoming gas pressures lower than 3.5" W.C. natural, consult factory.



A.G.A. CERTIFIED RATINGS & CAPACITIES

Fuel Type	Natural Gas	Boiler FLA	17*
Input BTU/hr.	3,000,000 / 879 kW	Min. Gas Pressure Required	3.5" W.C.**
Output BTU/hr.	2,610,000 / 765 kW	Max. Gas Pressure Allowed	14" W.C.
Electrical Requirements	230V/1 ph/ 60 hz	Operating Weight	1142 lbs. / 518 kgs.

TEMPERATURE RISE / PRESSURE DROP

20° F / 11.1° C		25° F / 13.9° C		30° F / 16.7° C		35° F / 19.4° C									
Flow Rate	Pressure Drop	Flow Rate	Pressure Drop	Flow Rate	Pressure Drop	Flow Rate	Pressure Drop								
GPM	L/s	Ft	kPa	GPM	L/s	Ft	kPa	GPM	L/s	Ft	kPa				
261.0	16.5	15.20	44.8	208.8	13.2	9.73	28.7	174.0	11.0	6.75	19.9	149.1	9.4	4.65	13.7

BOILER TRIM & CONTROLS

Main Gas Valve Body	Dungs MBC 2500	High Limit (Manual Reset)	Jumo
Firing Valve	Honeywell B200T1066 2"	High Limit (Auto Reset)	Jumo
Main Ball Valve	2"	Blocked Flue Switch	HUBA
Manual Pilot Valve	1/4" Honeywell B528	Air Switch	HUBA
Solenoid Valve w/Reg	CV100	Blower Motor	American Fan 3 HP - FLA 8
Ignition Control	Honeywell RM7800	Relief Valve - MB	1-1/4" x 1-1/2" set @ 50 psi
Operating Control	HeatNet™	Relief Valve - MW	3/4" x 3/4" set @ 125 psi
		Flow Switch	ITT FS251

RECOVERY CAPACITY

40°F	22° C	60°F	33° C	80°F	44° C	100°F	56° C	120°F	67° C	140°F	78° C
7,833	29,652	5,222	19,768	3,917	14,826	3,133	11,861	2,611	9,884	2,238	8,472

A.S.M.E.

ASME Sect IV Htg Surface	325.0 Sq. Ft. / 30.19 Sq. M.	Design Data	Max. 160 psig & 250° F
Water Volume	12.8 gal / 48.45 l (liters)		

REP FIRM	_____	FUTERA XLF 3000
SUBMITTED BY	_____	
JOB NAME	_____	Category II or Category IV Appliance
ARCHITECT	_____	(see Installation and Operation Manual for venting information)
ENGINEER	_____	RBI ® A Division of Mestek, Inc. Westfield, MA 01085 (413) 568-9571
CONTRACTOR	_____	
DATE	_____	