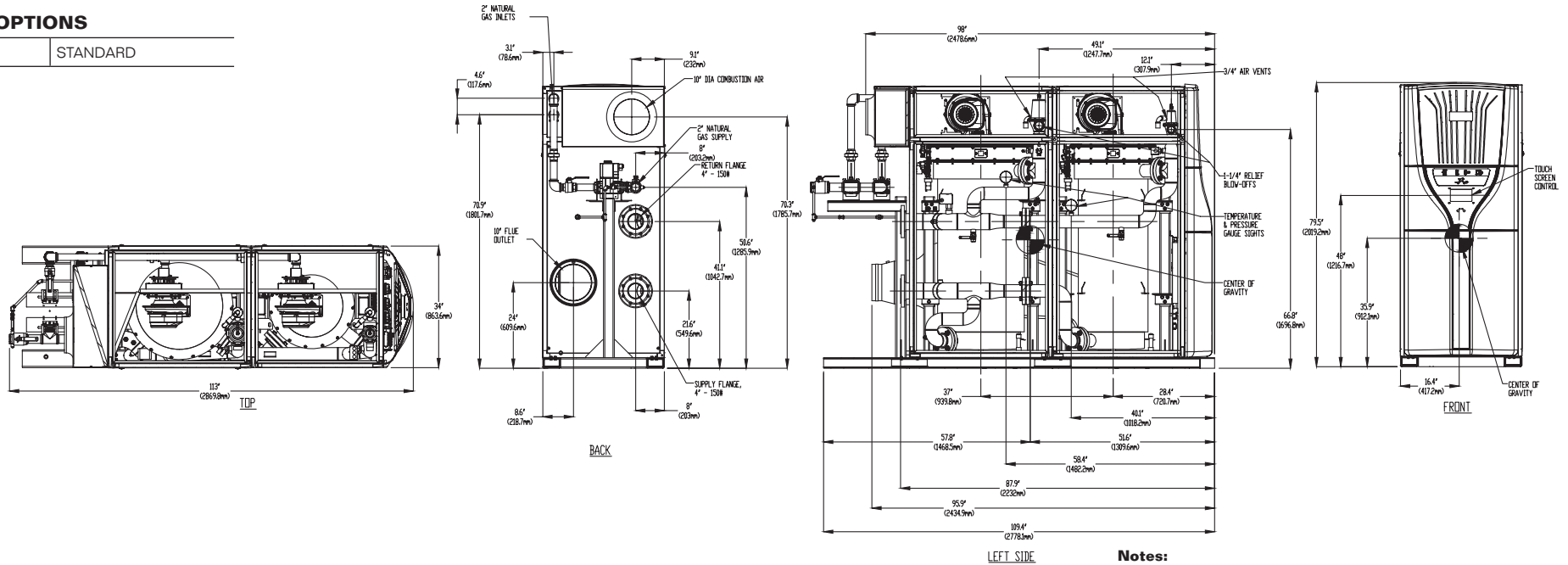


CODE OPTIONS

CSD-1	STANDARD
-------	----------



Notes:

1. Dimensions are approximate and should not be used to "rough-in" equipment.
2. Dimensions are subject to change without notice.

BOILER CERTIFIED RATINGS & CAPACITIES

Fuel Type	Natural Gas	Boiler FLA	***
Input BTU/hr.	4,500,000 / 1319 KW	Boiler HP	128.9
Output BTU/hr.	4,315,500 MBH / 1265 KW	Min. Gas Pressure Required	3" W.C.
Electrical Requirements	208/230 VAC 60 hz/3PH (with neutral)	Max. Gas Pressure Allowed	14" W.C.
		Operating Weight	***

BOILER TRIM & CONTROLS

Main Gas Valve	Dungs MBC	Air Switch	Huba
Firing Valve	1 1/2" Apollo	Flow Switch	TACO
Ignition Control	Honeywell RM7895C	Blocked Flue Switch	Cleveland NS2
Operating Control	HeatNet®	Blower Motor	Ametek
High Limit	Honeywell L4006E	L.W.C.O.	750P-MT-120
Main Ball Valve	1 1/2" Apollo	Relief Valve (2)	1-1/4" x 2" set @ 50 psi 1-1/4" x 1-1/4"
Pilot Cock	1/4"	Pilot Regulator	CV100

A.S.M.E.

ASME Sect IV Fire Side Htg Surface	359 Sq. Ft. / 33.3 Sq. M.	Design Data	Max. 160 psig & 210°F
ASME Sect IV Water Side Htg Surface	376 Sq. Ft. / 34.9 Sq. M.	Water Volume	96 gal / 363 liters
CV. GPM (1PSID)	***		

* Add circulator amps.

BOILER TEMPERATURE RISE / PRESSURE DROP (Based on Full Input)

20°F / 11.1°C		40°F / 22.2°C		60°F / 33.3°C		80°F / 44.4°C		100°F / 55.5°C											
Flow Rate	Pressure Drop	Flow Rate	Pressure Drop	Flow Rate	Pressure Drop	Flow Rate	Pressure Drop	Flow Rate	Pressure Drop										
GPM	L/s	Ft	kPa	GPM	L/s	Ft	kPa	GPM	L/s	Ft	kPa								
431.7	27.2	***	***	215.9	13.6	***	***	143.9	9.1	***	***	107.9	6.8	***	***	86.3	5.4	***	***

Flow GPM		Temp. Rise** (°F)		Vent Length (Equiv. Ft.)		Air Inlet Length (Equiv. Ft.)	
Min	Max	Min	Max	Min	Max	Min	Max
86.3	431.7	20	100	6	100	0	100

** Min/Max delta t reflects boiler operation at full input. For applications requiring operation above/below these parameters please consult factory.

***Pending

REP FIRM _____
SUBMITTED BY _____
JOB NAME _____
ARCHITECT _____
ENGINEER _____
CONTRACTOR _____
DATE _____

FlexCore 4500

Category II or Category IV Appliance
(see Installation and Operation Manual for venting information)



A Division of Mestek, Inc.
Westfield, MA 01085
(413) 568-9571