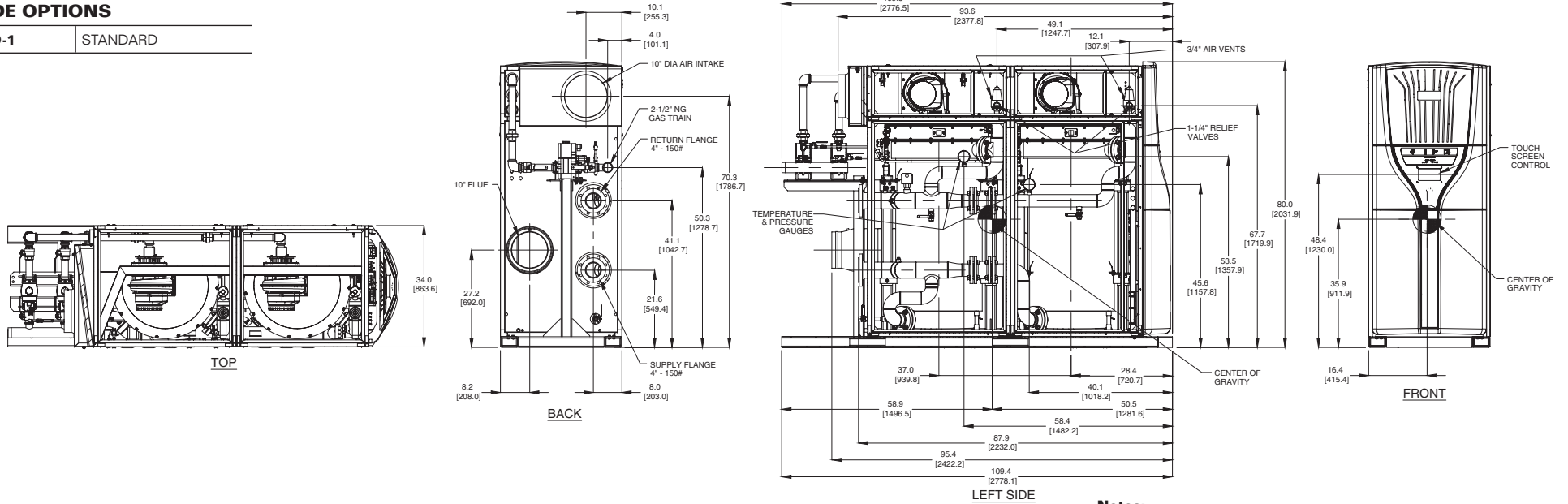


CODE OPTIONS

CSD-1	STANDARD
--------------	----------



Notes:

1. Dimensions are approximate and should not be used to "rough-in" equipment.
2. Dimensions are subject to change without notice.
3. All dimensions are inches (mm).

BOILER CERTIFIED RATINGS & CAPACITIES

Fuel Type	Natural Gas	Boiler FLA	20.7*
Input BTU/hr.	3,998,000 / 1172 KW	Boiler HP	113.6
Output BTU/hr.	3,802,098 MBH / 1114 KW	Min. Gas Pressure Required	3" W.C.
Electrical Requirements	230 VAC 60 hz/3PH (with neutral)	Max. Gas Pressure Allowed	14" W.C.
		Operating Weight	4950 lbs / 2245 kg

BOILER TRIM & CONTROLS

Main Gas Valve	Dungs MBC	Air Switch	Huba
Firing Valve	1 1/2" Apollo	Flow Switch	TACO
Ignition Control	Honeywell RM7895C	Blocked Flue Switch	Cleveland NS2
Operating Control	HeatNet®	Blower Motor	Ametek
High Limit	Honeywell L4006E	L.W.C.O.	750P-MT-120
Main Ball Valve	1 1/2" Apollo	Relief Valve (2)	1" x 1-1/4" set @ 50 psi
Pilot Cock	1/4"	Pilot Regulator	CV100

A.S.M.E.

ASME Sect IV Fire Side Htg Surface	336 Sq. Ft. / 31.2 Sq. M.	Design Data	Max. 160 psig & 210°F
ASME Sect IV Water Side Htg Surface	348 Sq. Ft. / 32.4 Sq. M.	Water Volume	124 gal / 468 liters
CV. GPM (1PSID)			

BOILER TEMPERATURE RISE / PRESSURE DROP (Based on Full Input)

20°F / 11.1°C		40°F / 22.2°C		60°F / 33.3°C		80°F / 44.4°C		100°F / 55.5°C											
Flow Rate	Pressure Drop	Flow Rate	Pressure Drop	Flow Rate	Pressure Drop	Flow Rate	Pressure Drop	Flow Rate	Pressure Drop										
GPM	L/s	Ft	kPa	GPM	L/s	Ft	kPa	GPM	L/s	Ft	kPa	GPM	L/s	Ft	kPa				
380.4	24.0	18.5	55.3	158.3	10.0	8.3	24.8	126.8	8.0	4.1	12.3	95.1	6.0	2.9	8.7	76.1	4.8	2.1	6.3

Flow GPM		Temp. Rise** (°F)		Vent Length (Equiv. Ft.)		Air Inlet Length (Equiv. Ft.)	
Min	Max	Min	Max	Min	Max	Min	Max
76.1	380.4	20	100	6	100	0	100

** Min/Max delta t reflects boiler operation at full input. For applications requiring operation above/below these parameters please consult factory.

REP FIRM	_____	<h1 style="margin: 0;">FlexCore 4000</h1> <p style="margin: 0;">Category II or Category IV Appliance (see Installation and Operation Manual for venting information)</p> <p>A Division of Mestek, Inc. Westfield, MA 01085 (413) 568-9571</p>
SUBMITTED BY	_____	
JOB NAME	_____	
ARCHITECT	_____	
ENGINEER	_____	
CONTRACTOR	_____	
DATE	_____	

* Add circulator amps.