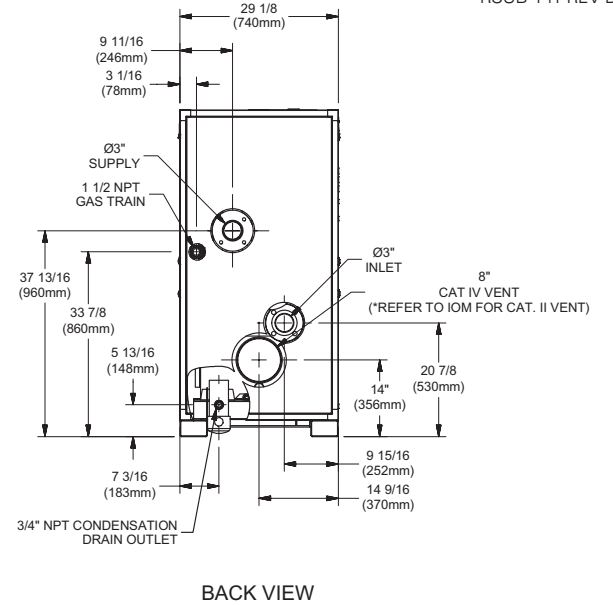
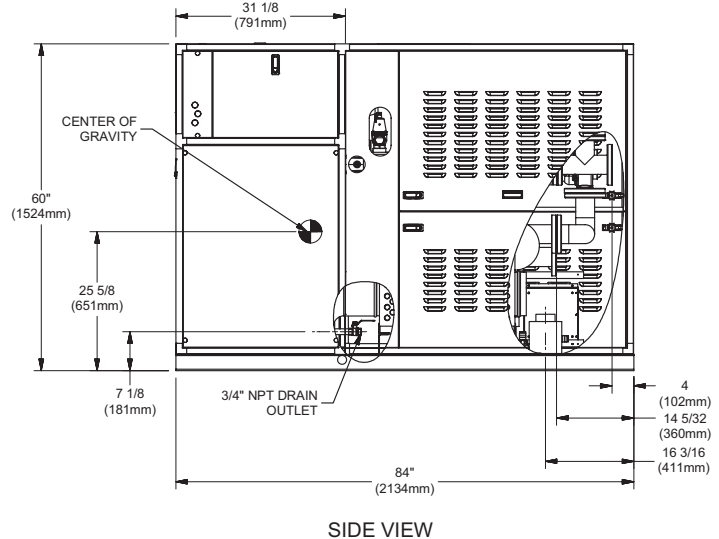
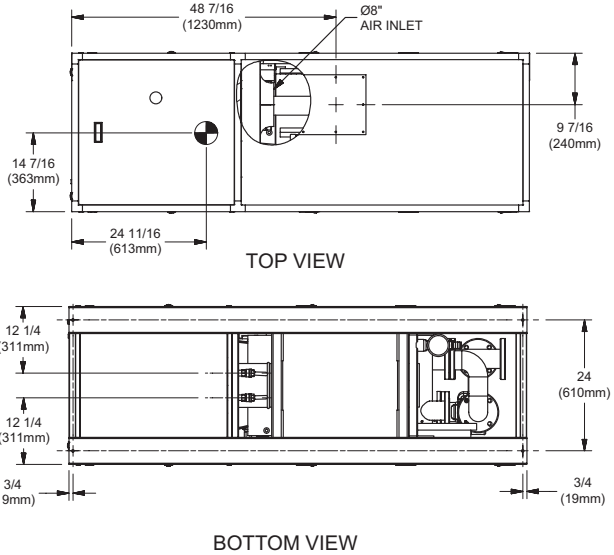


INDOOR UNIT



- Notes:**
1. Dimensions are approximate and should not be used to "rough-in" equipment.
 2. Dimensions are subject to change without notice.

BOILER CERTIFIED RATINGS & CAPACITIES

Fuel Type	Natural/Propane Gas	Total FLA	25.5* @ 230V
Input BTU/hr.	3,000,000 / 879 kW	Min. Gas Pressure Required	3.5" W.C.**
Output BTU/hr.	2,820,000 / 826 kW	Max. Gas Pressure Allowed	14" W.C.
Electrical Requirements	(L1, L2, NEU, GND) 208-230 VAC / 1PH / 60Hz	Operating Weight	2,407 lbs / 1,093 Kg

BOILER TEMPERATURE RISE / PRESSURE DROP

30°F / 16.7°C			
Flow Rate***		Total Loss****	
GPM	L/s	Ft	kPa
174.0	10.9	23.4	69.1

*** Primary Heat Exchanger
 **** Includes primary, secondary, mixing valve and piping.

BOILER / WATER HEATER TRIM & CONTROLS

Main Gas Valve	Dungs MBC 2500	Air Switch	HUBA
Firing Valve	2"	Blower Motor	American Fan 3HP - FLA 8
Ignition Control	Honeywell RM7895C	Relief Valve - CW	3/4" x 3/4" set @ 125 psi
Operating Control	HeatNet®	Relief Valve - CB	1" x 1-1/4" set @ 50 psi
High Limit	Jumo	Flow Switch	ITT FS8W
Main Ball Valve	2"	Solenoid Valve w/ Reg	CV100
Economizer	RBI-3000	Circulator - CW	B&G Series 580 (3HP) - FLA 17
Mixing Valve	3"	Circulator - CB	B&G Series e-80 (2 HP) - FLA 12
		By-Pass Piping	3"

WATER HEATER HOURLY RECOVERY CAPACITY

40°F	22°C	60°F	33°C	80°F	44°C	100°F	56°C	120°F	67°C	140°F	78°C
8,355	31,583	5,570	21,055	4,178	15,792	3,342	12,633	2,785	10,528	2,387	9,024

A.S.M.E.

ASME Sect IV Htg Surface	325.0 Sq Ft / 30.19 Sq M	Design Data	Max. 160 psig & 250°F
Water Volume	12.8 gal / 48.45 Liters	Secondary Heat Exchanger	125 psi
Water Volume Secondary HX	11.5 gal / 43.53 Liters		

* Includes pump
 ** For incoming gas pressures lower than 3.5" W.C. natural or propane, consult factory.

REP FIRM _____

SUBMITTED BY _____

JOB NAME _____

ARCHITECT _____

ENGINEER _____

CONTRACTOR _____

DATE _____

FUSION XLF 3000

Category II or IV Appliance

(see Installation and Operation Manual for venting information)

A Division of Mestek, Inc.
 Westfield, MA 01085
 (413) 568-9571