



SUSPENDED ELECTROMAGNETS TRAMP MTL 11E (4/99)

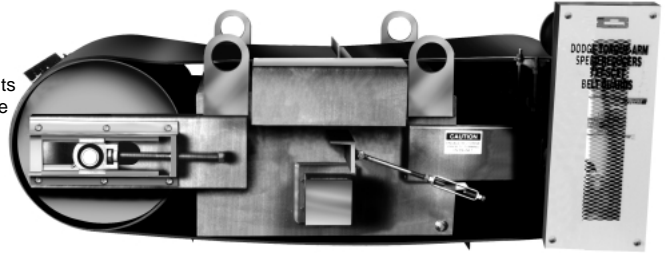
Self-Cleaning

CLASS 2 CONSTRUCTION

SPECIFICATIONS:

- Non-combustible coolant
- External expansion tank
- Manganese impact plate
- Insulated copper coils
- 3 year limited warranty on coils

*Photo represents products at date of publication.

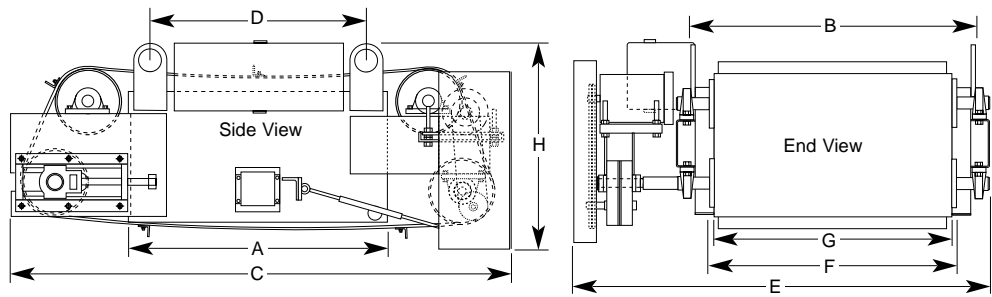


CLASS 2 CONSTRUCTION FEATURES:

- Dodge drive components
- Drive pulley lagged
- Stainless steel angled cleats
- "C" channel construction
- 1.4 service factor on drive
- Shaft mounted belt drive reducer
- Stainless steel mechanical belt splice

OPTIONS:

- Turnbuckles
- Permanent plate magnet extensions
- Custom steel tube mounting frame



Note: All dimensions are stated in inches.

SEMO SC2 Model	Magnet Dim. A x B	Overall Length C	Lift Lug Centers D	Overall Width E	Pulley Width F	Belt Width G	Overall Height H	Number of Pulleys	Pulley Dia.	Motor H.P.	Magnet Voltage VDC	Magnet Wattage	Approx Weight Lbs.
SEMO241SC2	24" x 24"	62"	16"	44"	20"	18"	32"	2	16"	2	115	1,650	1,335
SEMO301SC2	30" x 30"	75"	22"	51"	26"	24"	32"	2	20"	2	115	2,700	2,200
SEMO361SC2	36" x 36"	89"	28"	58"	32"	30"	34"	2	24"	2	115	3,800	3,340
SEMO422SC2	42" x 42"	95"	34"	64"	38"	36"	34"	2	24"	3	230	5,000	4,650
SEMO482SC2	48" x 48"	93"	40"	69"	44"	42"	38"	4	12"	3	230	6,600	6,215
SEMO542SC2	54" x 54"	95"	46"	75"	51"	48"	42"	4	12"	3	230	8,000	7,800
SEMO602SC2	60" x 60"	97"	52"	81"	57"	54"	45"	4	12"	5	230	10,000	10,160
SEMO662SC2	66" x 66"	103"	58"	87"	63"	60"	48"	4	12"	5	230	12,250	13,575
SEMO722SC2	72" x 72"	120"	64"	93"	69"	66"	51"	4	12"	7-1/2	230	14,500	20,275
SEMO782SC2	78" x 78"	126"	70"	99"	75"	72"	51"	4	12"	7-1/2	230	17,000	22,550

*Dimensions represent product at date of publication. If dimensions are critical call for up-to-date changes.

POWER SUPPLY FEATURES FOR SUSPENDED ELECTROMAGNETS

- NEMA 4 enclosure
- Isolation transformer
- Continuous duty rated transformer
- Three phase full wave bridge
- Class J fuses

SEMO Model No.	Required Power Supply	Dimensions H x W x D	Input Voltage	Output Voltage	Supply Wattage
241(SC2)	PSS43200	24" x 24" x 12"	240VAC3Ø	115VDC	2,000
	PSS53200	24" x 24" x 12"	480VAC3Ø	115VDC	2,000
301(SC2)	PSS43300	24" x 24" x 12"	240VAC3Ø	115VDC	3,000
	PSS53300	24" x 24" x 12"	480VAC3Ø	115VDC	3,000
361(SC2)	PSS43400	24" x 24" x 12"	240VAC3Ø	115VDC	4,000
	PSS53400	24" x 24" x 12"	480VAC3Ø	115VDC	4,000
422(SC2)	PSS44500	36" x 30" x 16"	240VAC3Ø	230VDC	5,000
	PSS54500	36" x 30" x 16"	480VAC3Ø	230VDC	5,000
482(SC2)	PSS44700	36" x 30" x 16"	240VAC3Ø	230VDC	7,000
	PSS54700	36" x 30" x 16"	480VAC3Ø	230VDC	7,000

SEMO Model No.	Required Power Supply	Dimensions H x W x D	Input Voltage	Output Voltage	Supply Wattage
542(SC2)	PSS44800	36" x 30" x 16"	240VAC3Ø	230VDC	8,000
	PSS54800	36" x 30" x 16"	480VAC3Ø	230VDC	8,000
602(SC2)	PSS441000	36" x 30" x 16"	240VAC3Ø	230VDC	10,000
	PSS541000	36" x 30" x 16"	480VAC3Ø	230VDC	10,000
662(SC2)	PSS441250	36" x 30" x 16"	240VAC3Ø	230VDC	12,500
	PSS541250	36" x 30" x 16"	480VAC3Ø	230VDC	12,500
722(SC2)	PSS541500	36" x 30" x 16"	240VAC3Ø	230VDC	15,000
	PSS541500	36" x 30" x 16"	480VAC3Ø	230VDC	15,000
782(SC2)	PSS542000	36" x 30" x 16"	240VAC3Ø	230VDC	20,000
	PSS542000	36" x 30" x 16"	480VAC3Ø	230VDC	20,000

Note: Power Supplies are available in VAC single phase and 240/480 and 575 three phase. Power supply enclosures are available in NEMA 1, 4, 9 and 12.

Note: Magnets are sized according to application requirements. Coolant oil levels must be checked regularly.

©1999 Industrial Magnetics, Inc.

IMI Is Represented By Air Process Systems & Conveyors Co., Inc.

774 Burr Oak Drive • Westmont, Illinois 60559 • Phone: 630.887.0770 800.822.0771

Fax: 630.887.0771 • Email: Sales@AirProcessSystems.com

Web: www.AirProcessSystems.com