

# sierrasleep<sup>®</sup>

— BY ASHLEY —



# iKids Memory Foam

sierrasleep<sup>®</sup>

— BY ASHLEY —



Size	Pattern
Twin	M80211
Full	M80221

- 1" Memory Foam
- 5" Support Core

# iKids Innerspring

# sierrasleep<sup>®</sup>

— BY ASHLEY —



- Soft Comforma Fiber
- Blended Cotton Fiber
- 1" Luxury Support Quilt Foam
- 1" Conforma Soft Foam
- High Density Support Pad
- Verticoil Spring Unit

Size	Pattern
Twin	M80411
Full	M80421

# INNERSPRING

# sierrasleep®

— BY ASHLEY —



## Sierra Sleep Firm

Size	Pattern
Twin	M90611
Full	M90621
Queen	M90631
King	M90641
Cal King	M90651

- Luxury Fiber Barrier (85% Rayon, 15% Polyester)
- 1" High Density Quilt Foam
- High Density Firming Pad
- 312, 6.5", Bonnell Coil Unit

INNERSPRING

sierrasleep®

— BY ASHLEY —



## Longs Peak Ltd. Plush

Size	Pattern
Twin	M90711
Full	M90721
Queen	M90731
King	M90741
Cal King	M90751

- Luxury Fiber Barrier (85% Rayon, 15% Polyester)
- 2" High Density Quilt Foam
- High Density Firming Pad
- 1" Firm Support Foam
- 609, 7" 15 Gauge Pocketed Coils



INNERSPRING

sierrasleep®

— BY ASHLEY —



## Limited Edition Firm

Size	Pattern
Twin	M96611
Full	M96621
Queen	M96631
King	M96641
Cal King	M96651

- Ultra Loft Comforma Fiber
- Blended Cotton Fiber
- 1" High Density Quilt Foam
- .5" Lumbar Gel Memory Foam
- 2" Firm Support Foam
- 3" High Density Foam Encasement
- 720 Power Packed Wrapped Coil Unit



INNERSPRING

sierrasleep®

— BY ASHLEY —



## Limited Edition Plush

Size	Pattern
Twin	M96711
Full	M96721
Queen	M96731
King	M96741
Cal King	M96751

- Ultra Loft Comforma Fiber
- Blended Cotton Fiber
- 2" Luxury Support Quilt Foam
- .5" Lumbar Gel Memory Foam
- 1" Conforma Soft Support Foam
- 3" High Density Foam Encasement
- 720 Power Packed Wrapped Coil Unit



INNERSPRING

sierrasleep®

— BY ASHLEY —



## Limited Edition Pillow Top

Size	Pattern
Twin	M96811
Full	M96821
Queen	M96831
King	M96841
Cal King	M96851

- Ultra Loft Comforma Fiber
- Blended Cotton Fiber
- 2" Luxury Support Quilt Foam
- 1" Conforma Soft Support Foam
- .5" Lumbar Gel Memory Foam
- 3" High Density Foam Encasement
- 720 Power Packed Wrapped Coil Unit





INNERSPRING

sierrasleep<sup>®</sup>

— BY ASHLEY —



## Mt. Dana Firm



Size	Pattern
Twin	M95611
Full	M95621
Queen	M95631
King	M95641
Cal King	M95651

- 1 oz. High Loft Comfort Fiber
- 1 oz. Luxury Cotton
- 3/4" High Density Quilt Foam
- 2" High Density Firm Zoned Sculpted Pressure Relief Foam
- 3" High Density Firm Upholstery Grade Body Foam
- 1/2" High Density 3 lb. Gel Memory Foam Lumbar Support
- 720 Power Packed Wrapped Coil Unit
- 3" High Density Foam Encased Edge Support System
- ❖ Vertical Handles

INNERSPRING

sierrasleep®

— BY ASHLEY —



## Mt. Dana Plush

Size	Pattern
Twin	M95711
Full	M95721
Queen	M95731
King	M95741
Cal King	M95751

- 1 oz. High Loft Comfort Fiber
- 1 oz. Luxury Cotton
- 3/4" High Density Quilt Foam
- 2" High Density Plush Zoned Sculpted Pressure Relief Foam
- 3" High Density Plush Upholstery Grade Body Foam
- 1/2" High Density 3 lb. Gel Memory Foam Lumbar Support
- 720 Power Packed Wrapped Coil Unit
- 3" High Density Foam Encased Edge Support System
- ❖ Vertical Handles



INNERSPRING

sierrasleep®

— BY ASHLEY —



## Mt. Dana Euro Top

Size	Pattern
Twin	M95811
Full	M95821
Queen	M95831
King	M95841
Cal King	M95851

- 1 oz. High Loft Comfort Fiber
- 1 oz. Luxury Cotton
- 1.5" High Density Quilt Foam
- 2" High Density Plush Zoned Sculpted Pressure Relief Foam
- 4" High Density Firm Upholstery Grade Body Foam
- 1/2" High Density 3 lb. Gel Memory Foam Lumbar Support
- 720 Power Packed Wrapped Coil Unit
- 3" High Density Foam Encased Edge Support System
- ❖ Vertical Handles





# Mt. Rogers Ltd. Firm

- Ultra Loft Comforma Fiber
- Blended Cotton Fiber
- 1" High Density Quilt Foam
- 2" High Density Memory Foam
- 1" Super Firm Support Foam
- 3" High Density Foam Encasement
- 720 8" Individually Encased Coils



Size	Pattern
Queen	M90331
King	M90341
Cal King	M90351



INNERSPRING

sierrasleep®



## Mt. Rogers Ltd. Plush



Size	Pattern
Queen	M90431
King	M90441
Cal King	M90451

- Ultra Loft Comforma Fiber
- Blended Cotton Fiber
- 1" High Density Quilt Foam
- 2" High Density Memory Foam
- 1" Super Firm Support Foam
- 3" High Density Foam Encasement
- 720 8" Individually Encased Coils
- Vertical Handles



INNERSPRING

sierrasleep®



## Mt. Rogers Pillow Top

Size	Pattern
Queen	M90531
King	M90541
Cal King	M90551

- Ultra Loft Comforma Fiber
- Blended Cotton Fiber
- 2" Luxury Support Quilt Foam
- 2" High Density Memory Foam
- 1" Conforma Firm Support Foam
- 3" High Density Foam Encasement
- 720 8" Individually Encased Coils



INNERSPRING

sierrasleep®

— BY ASHLEY —



## Manhattan Design - Firm

Size	Pattern
Queen	M97631
King	M97641
Cal King	M97651

- 1 oz. High Loft Comfort Fiber
- 1 oz. Luxury Cotton
- 1.5" High Density Firm Quilt Foam
- 1" Synthetic Latex
- 3" High Density Firm Upholstery Foam
- **2" High Density 3 lb. Firm Memory Foam**
- 968 Quantum Encased Wrapped Coil System
- Steel Encased Edge Support Quantum Coils

Quantum Edge Steel Perimeter Innerspring

sierrasleep®

— BY ASHLEY —



## Manhattan Design - Plush

Size	Pattern
Queen	M97731
King	M97741
Cal King	M97751

- 1 oz. High Loft Comfort Fiber
- 1 oz. Luxury Cotton
- 1.5" High Density Firm Quilt Foam
- 1" Synthetic Latex
- 3" High Density Firm Upholstery Foam
- **2" High Density 2.5 lb. Firm Memory Foam**
- 968 Quantum Encased Wrapped Coil System
- Steel Encased Edge Support Quantum Coils

# Mygel Hybrids

sierrasleep®



## Mygel Hybrid 1100

Size	Pattern
Twin	M82611
Full	M82621
Queen	M82631
King	M82641
Cal King	M82651

- 2" Mygel Foam
- 3" High Density Foam
- 6" Pocketed Coil System
- Luxurious knit cover
- Removable and Washable



# Mygel Hybrids

# sierrasleep®



## Mygel Hybrid 1300

Size	Pattern
Twin	M82711
Full	M82721
Queen	M82731
King	M82741
Cal King	M82751

- 3" Mygel Foam
- 2" High Density Foam
- 8" Pocketed Coil System
- Luxurious knit cover
- Removable and Washable



# Mygel Memory Foam

# sierrasleep®

— BY ASHLEY —

## Memory Foam



Real Mattress In a Box  
**Compression Technology**  
results in the most efficient transportation  
and a lower carbon footprint for this  
mattress

**Compression packed beds allow retailers to maintain higher inventory levels while taking up less space in their DC's. In addition, by compressing the beds, consumers are delivered a very consistent feel from what they lay on in the showrooms.**



**BioFoam™**  
Natural Seed Oil  
minimizes the use  
of petrol-based  
chemical oils

**Sierra Sleep uses 30% castor seed oil in lieu of petroleum which provides a better carbon foot print than most memory foam products in the market place.**



**Green tea extract is added to the memory foam formula of all Sierra Sleep specialty beds. The green tea acts as a breath of fresh air and aids in the elimination of petroleum odors often associated with memory foam products.**



**Charcoal is infused into Sierra Sleep memory foam during production. This process is proven to reduce the amount of petroleum odor often associated with competitors products.**



**CertiPUR-US® approved foams are: Made without chemicals associated with ozone depletion. Made without PBDE flame retardants. Made without mercury, lead and other heavy metals. Made without formaldehyde.**

# Mygel Memory Foam

# sierrasleep®

— BY ASHLEY —



## 7" Mygel

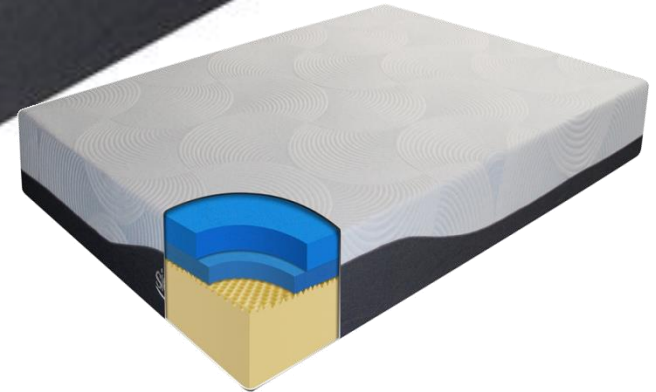
King	M88241
Cal King	M88251
<b>Size</b>	<b>Pattern</b>
Twin	M97111
Full	M97121
Queen	M97131

- 2in Mygel Foam
- 5in High Density Foam
- Upgraded luxurious knit cover

# Mygel Memory Foam

# sierrasleep®

— BY ASHLEY —



## 9" Mygel

Size	Pattern
Twin	M97211
Full	M97221
Queen	M97231
King	M97241
Cal King	M97251

- 2.5" Mygel Foam
- 1" Reticulated High Density Foam
- 5.5" High Density Fresh Air Base foam

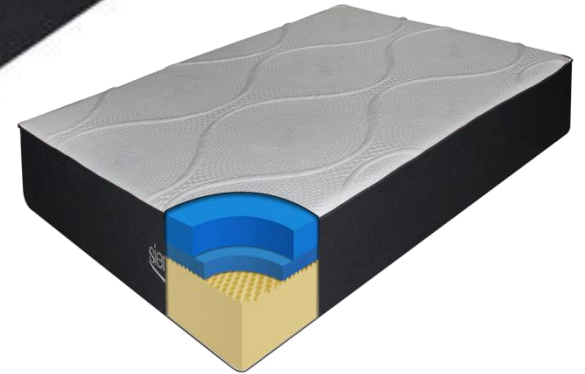
# Mygel Memory Foam

# sierrasleep®

— BY ASHLEY —



## 11" Mygel



Size	Pattern
Queen	M97331
King	M97341
Cal King	M97351

- 3.5" Mygel Foam
- 1" Reticulated High Density Foam
- 6.5" High Density Fresh Air Base Foam

# Mygel Memory Foam

# sierrasleep®

— BY ASHLEY —



## 13" Mygel

Size	Pattern
Queen	M97431
King	M97441
Cal King	M97451

- 1 ½" Quilt with 1" Synthetic Latex
- 2" Mygel Foam
- 2" Synthetic Latex
- 1" Reticulated High Density Foam
- 6.5" High Density Fresh Air Base Foam



# Power Bases

# sierrasleep<sup>®</sup>

— BY ASHLEY —



## Good

Size	Model #
Queen	M9X432
King	M9X442
	M9X442A
Cal King	M9X452
	M9X452A

- Wireless hand control
- One touch to flat feature
- Fully Upholstered surround enhances finished bed appearance
- All steel frame, requires no additional supports
- Mountable to headboards (separate mounting kit)
- Low profile design works with platform and storage
- True wall-hugger design, keeps you close to night stands
- 650 lbs. weight capacity tested to 15,000 cycles
- 3 year non prorated warranty bumper to bumper
- One piece King

# Power Bases

sierrasleep®

— BY ASHLEY —



## Better

Size	Model #
Queen	M9X532
King	M9X542
	M9X542A
Cal King	M9X552
	M9X552A

- Fully independent head and foot motors, infinite adjustment
- Wireless hand control
- One touch to flat position
- USB charging ports
- All steel frame, requires no additional supports
- Mountable to headboards (separate mounting kit)
- Low profile design works with platform and storage
- True wall-hugger design, keeps you close to night stands
- 650 lbs. weight capacity tested to 15,000 cycles
- 3 year non prorated warranty bumper to bumper
- One piece King

# Power Bases

# sierrasleep®

— BY ASHLEY —



## Best

Size	Model #
Queen	M9X632
King	M9X642
	M9X642A
Cal King	M9X652
	M9X652A

- Fully independent head and foot motors, infinite adjustment
- One touch to flat position
- USB charging ports
- LED under bed night lights
- Pre-programmed Zero Gravity and Anti-Snore positions
- Head and Foot massage motors with variable intensity
- All steel frame, requires no additional supports
- Mountable to headboards (separate mounting kit)
- Low profile design works with platform beds
- True wall-hugger design, keeps you close to night stands
- 650 lbs. weight capacity tested to 15,000 cycles
- 3 year non prorated warranty bumper to bumper
- One piece King

# sierrasleep®

— BY ASHLEY —



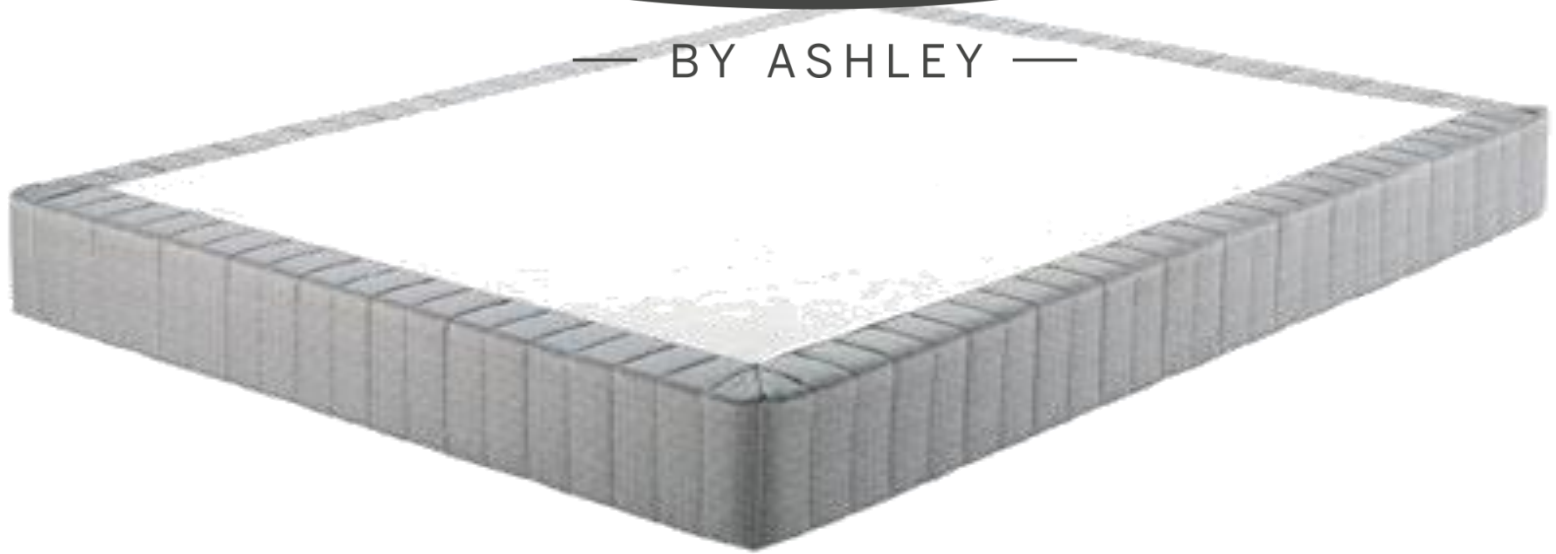
## Better Than a Box Spring

Size	Pattern
Twin	M86X12
Full 2 pc	M86X22
Queen 2pc	M86X32
King 2pc	M86X42
Cal King 2pc	M86X52

- Acts as bed frame and foundation
- 14" Height
- 12 Touch points to the floor
- Easy to assemble
- Compact shipping design
- Headboard brackets included

# Foundations

sierrasleep<sup>®</sup>  
— BY ASHLEY —



## Standard / Low Profile Foundations

Size	Standard	Low Profile
Twin	M81X12	M83X12
Full	M81X22	M83X22
Queen	M81X32	M83X32
King	M81X42	M83X42
Cal King	M81X52	M83X52

- All wood construction
- 5" or 9" Heights
- Stylish gray cover



# sierrasleep®

— BY ASHLEY —

Travel Contour Memory Foam Pillow



- Ship 4 per case
- Great for promotions
- Each pillow comes with tote
- Ideal for back sleepers

	PATTERN
Travel (4)	M82501

Traditional Latex Pillow



- 100% Poly Jacquard cover
- Ventilated NuRest Synthetic Latex
- Available in Queen and King size
- Ship 2 per case

	PATTERN
Queen (2)	M82502
King (2)	M82503

Traditional Memory Foam Pillow



- 100% Poly Jacquard cover
- Ventilated Ecofusion Memory Foam
- Available in Queen and King size
- Ship 2 per case

	PATTERN
Queen (2)	M82504
King (2)	M82505

Dual Sided Memory Foam Pillow



- 100% Poly Jacquard cover
- Ventilated Mesh-Grey
- Ventilated Ecofusion Memory Foam
- Microfiber (Synthetic Down)
- Available in Queen and King size
- Ship 2 per case

	PATTERN
Queen (2)	M82506
King (2)	M82507

Better Than Down Pillow



- Micro Fabric cover
- (2) Ventilated Ecofusion Memory Foam Inserts
- Microfiber (Synthetic Down)
- Adjustable for all sleep positions
- Available in Queen and King size
- Ship 2 per case

	PATTERN
Queen(2)	M82508
King(2)	M82509

sierrasleep<sup>®</sup>

— BY ASHLEY —