



AMERICAN
TRADING
COMPANY

CATALOG 2015



werzalit®
LASTING. BEAUTY.

TROPICALSUAL™

ATGOWOOD™

ATGOSTONE™

EGONOX™

ATCOMFORT SEATING™



This American Trading Company catalog is devoted to restaurant furniture, mostly in stock, at popular prices representing excellent values. We also wanted you to be aware of our Hospitality Furniture presented under the TropiCasual[™] and ArtieGarden brands. These two brands are presented in separate catalogs and websites. ArtieGarden presents the latest designs and offers a residential feeling for hospitality and contract. ArtieGarden quality is second to none, and you benefit from our direct relationship with Artie which allows for very competitive pricing.

TropiCasual[™] describes a great range of products manufactured by ArtieGarden especially created for the Hotel, Resort, Club, Condominium, Villa, Time Share and Casino projects searching for a balance of quality, style and cost.

Manufactured to order, you have the possibility of choosing weave colors, powder-coat colors, weave styles, and fabrics, as well as some critical dimensions.

ArtieGarden is manufactured to true contract specifications using type 6063 marine grade aluminum, powder-coated to exterior grade standards in colors matching your choice of weave for the longest life. We use only 3000 hour (or more) UV rated high density polyethylene and Sunbrella fabrics to assure your satisfaction. Go to www.artiegarden.com for a complete tour of ArtieGarden products, or contact www.tropi-casual.com to receive a full catalog quickly.

Cover Photo: Cincinnati Zoo featuring Curacao chairs, Werzalit tables, Andalusia Bases. Photo: © Brett Drury, www.architectural-photography.com

OUR MISSION

American Trading Company is dedicated to bringing well designed furniture of exceptional value to the hospitality market.

All featured products are true contract quality and are guaranteed to look better longer.

American Trading Company proudly presents ATCOMfort seating, uniquely reflecting our "value" philosophy. Every chair or barstool shown has been sat-in, evaluated, adjusted, redesigned, revised, reevaluated and finally selected and approved to offer you the best seating choice possible.

We feature Werzalit® brand table tops made of weather-resistant, seamless, molded laminate. We also offer a variety of tables in laminate, stainless steel, solid wood, wood-edged, wood veneer, real stone, Corian®, teak and resin to meet virtually any of your design requirements.

It is our mission that our clients always feel that they get more than they pay for!

www.atcfurniture.com



Find us on
Facebook

TABLE TOPS

Werzalit® In Stock _____	p.4
Werzalit® Wood Look _____	p.5
Werzalit® Stone Look _____	p.6
Werzalit® Colors _____	p.6
Werzalit® Inspirations _____	p.7
Werzalit® Basics _____	p.7
Werzalit® Borders _____	p.8
Werzalit® Custom _____	p.8
Granite _____	p.8
ATCOstone™ _____	p.9
ATCOwood™ _____	p.10
Veneer & Marquetry _____	p.11
Teak and Atcosolid™ _____	p.12
Corian® & Staron® _____	p.13
Weave _____	p.18

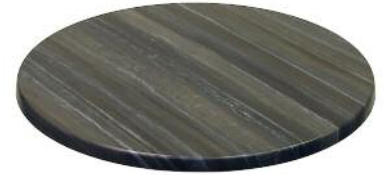
BASES p.14-17

CHAIRS

TropiCasual™ _____	p.2
Cast Aluminum _____	p.18
Teak _____	p.19
Hawaii, Tahiti, Fiji, _____	p.20
Ballina, Santorini & Jessie	
Aruba _____	p.21
Oviedo & Villa _____	p.22
Isabella & Premier _____	p.23
Tatta _____	p.24
Lotus & Pisa _____	p.25
Resin _____	p.26-27
Faux Rattan _____	p.28
Manhattan _____	p.29
Catalina and Elegance Teak _____	p.30
Jardin & Fleet _____	p.31
Curacao & Toledo _____	p.32
South Beach & Edina II _____	p.33
Fabric Colors _____	p.34
Lounge Furniture _____	p.35

UMBRELLAS

Aurora _____	p.36
Eclipse & Giant _____	p.37
Patio _____	p.38
Market _____	p.39



Tempera Silver
Werzalit Top



Weave
Table



Manhattan
Side Chair
Red



Futura
Black Base



Werzalit® tops are created by fusing melamine top and bottom surfaces to a resin-impregnated, chopped hardwood substrate under heat and pressure. The process produces a seamless, weather-resistant and water-resistant table top that looks good for a long time.



American Trading has selected and programmed to keep these table tops in stock in the most popular sizes in reasonable quantities. This does not guarantee unlimited quantities of all colors or sizes, and all stock items are subject to prior sale, so please contact American Trading to verify stock conditions before ordering when delivery times are critical.

All tops are available in round, square and rectangle.

SIZES AVAILABLE					
DIA 24	DIA 28	DIA 32	DIA 36	DIA 42	DIA 48
24x24	28x28	32x32	36x36		
24x32	28x44	32x48			

Prefix "p" in the part number is premium, otherwise standard pricing applies.

WOOD LOOK



STONE LOOK



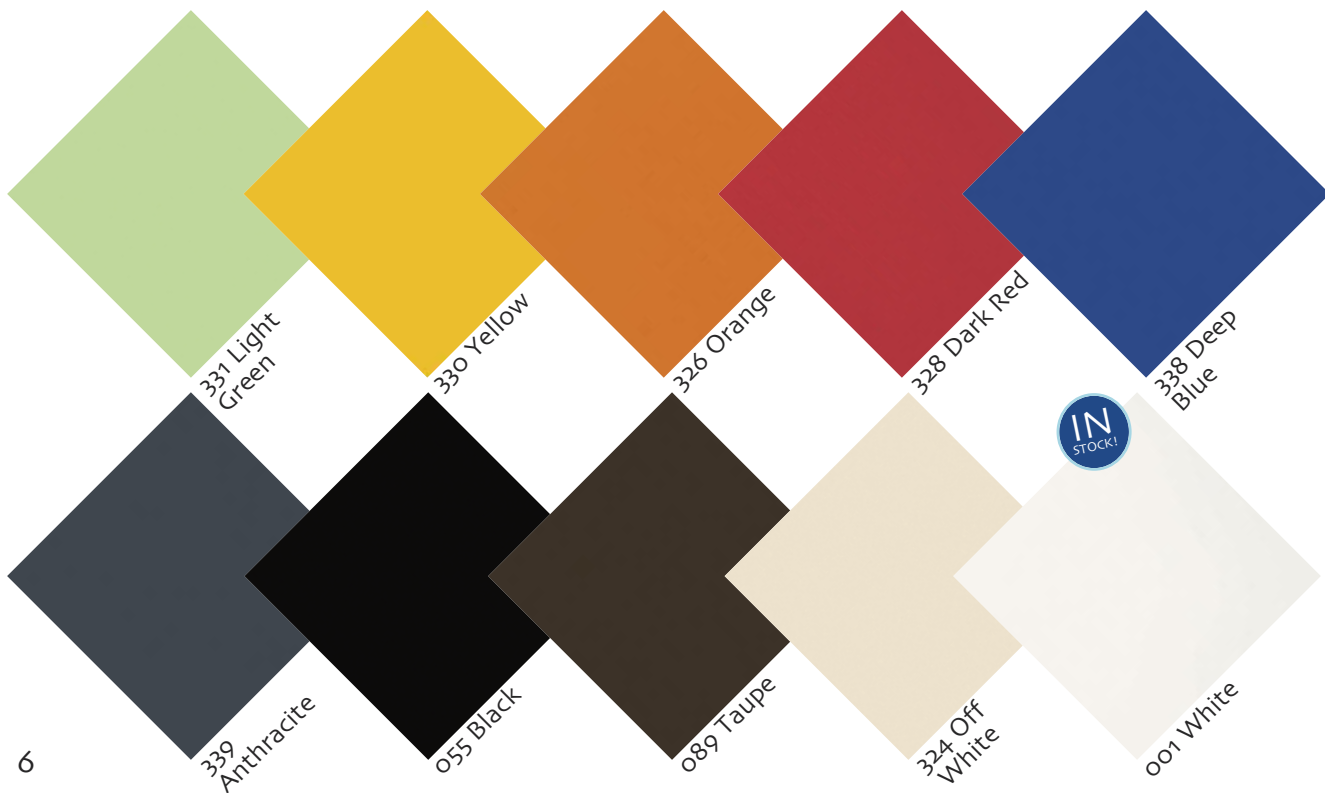
Werzalit® molded laminate tops come as you see here, in a wide variety of looks.



COLORS



SIZES AVAILABLE					
DIA 24	DIA 28	DIA 32	DIA 36	DIA 42	DIA 48
24x24	28x28	32x32	36x36		
24x32	28x44	32x48			



INSPIRATIONS

Inspirations tops are not available in 42 & 48 DIA, 32x48

werzalit
LASTING. BEAUTY.

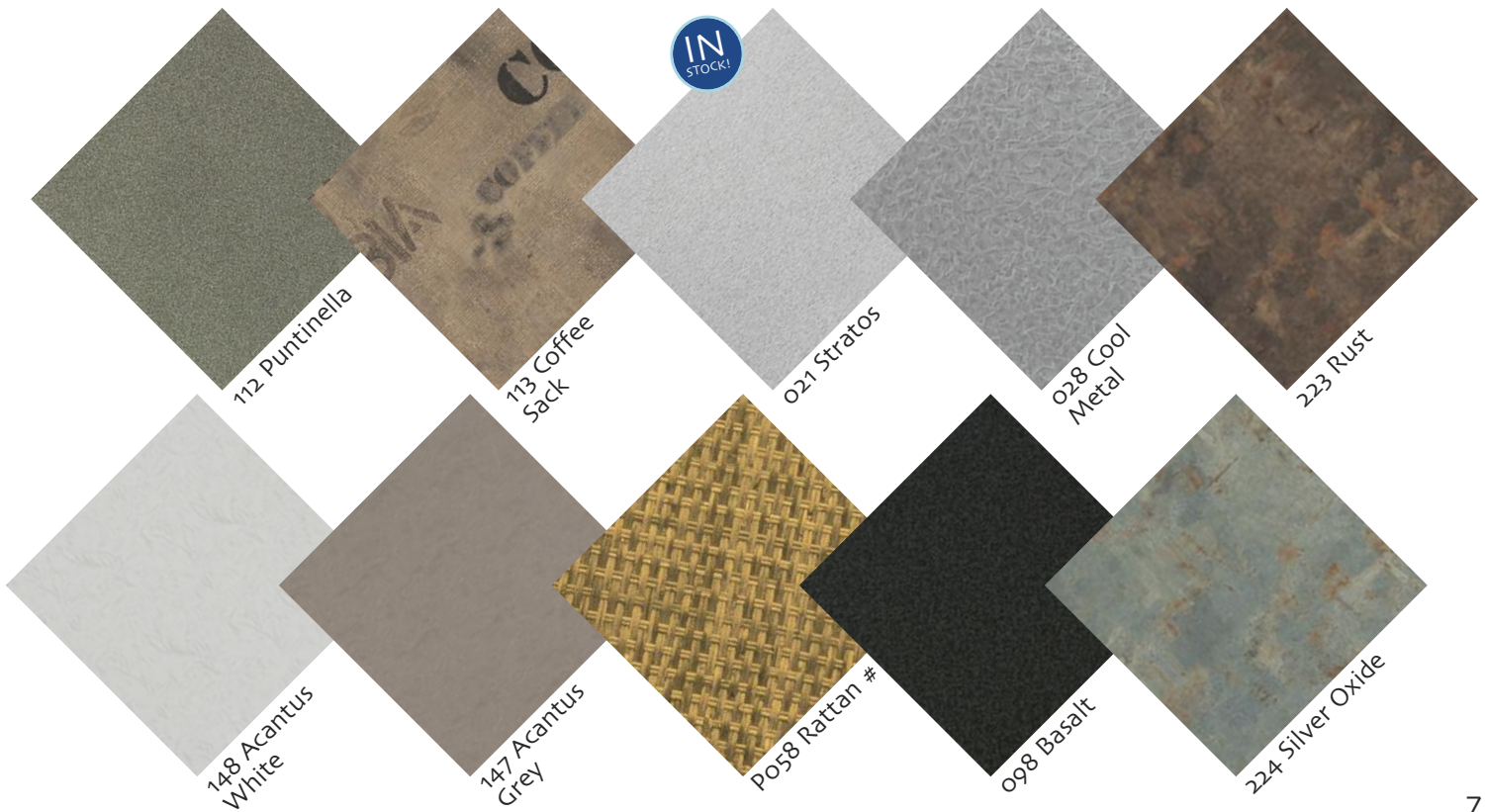
TABLE TOPS



BASICS

indicates tops which are not available in 42 & 48 DIA, 32x48

werzalit
LASTING. BEAUTY.



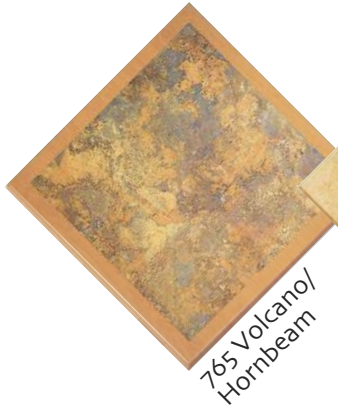
BORDERS

Borders pricing applies.

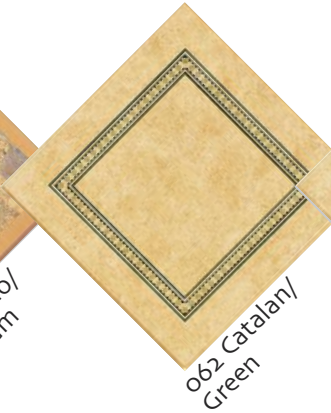
werzalit
LASTING. BEAUTY.

SIZES AVAILABLE

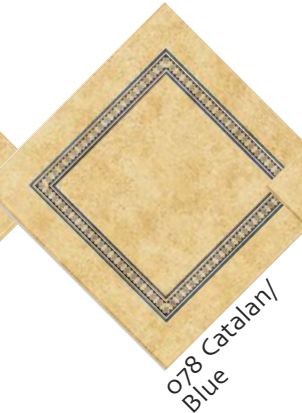
DIA 24	DIA 28	DIA 32
24x24	28x28	32x32
24x32	28x44	32x48



765 Volcano/
Hornbeam



062 Catalan/
Green



078 Catalan/
Blue



309 Catalan/
Red



743 Burl/
Black

CUSTOM

Custom tops are made to your order. We just need a JPEG image at a resolution of 300 dpi to get started. Minimum quantity is just 15 tops. Let us help you personalize your décor.

SIZES AVAILABLE

DIA 24	DIA 28	DIA 32	DIA 36	DIA 42
24x24	28x28	32x32	36x36	
24x32	28x44	32x48		



GENUINE GRANITE

ATC features beautiful real solid 3 cm (1 3/16") granite in the most popular colors sized to your needs. A 3/4" plywood mounting plate is included and delivery is 4 weeks or less.



Black Pearl



Tan Brown



Uba Tuba



Juparana Gold Dark



Juparana Gold Light



ATCOSTONE is created by melding Granite, marble or other real stones and applying them onto a weather-proof stainless steel frame. Usable inside or out, available in most popular sizes, ATCOSTONE tables complement any décor at an affordable price. Sand Beige pattern is stocked but others are available using your imagination. Minimum quantities may apply for custom tops.



TABLE TOPS

SIZES AVAILABLE						
DIA 24	DIA 28	DIA 32	DIA 36	DIA 42	DIA 48	DIA 54
24x24	28x28	32x32	36x36			
24x32	28x44	32x48				

Standard Sand Beige Pattern



Note: Below table tops are custom orders. Use your imagination to create your own design and patterns!



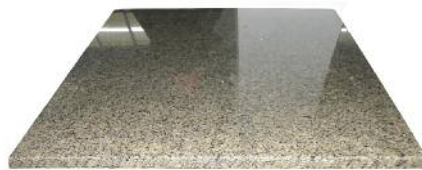
Custom A



Custom B



Custom C



Custom D



Custom E



Custom F



Custom G



Custom H

SOLID WOOD



Atcwood™ tables feature exclusive ScratchShield™ finish. ScratchShield™ is UV cured, with ceramic dust scratch inhibitors and is almost impossible to scratch. It also has anti-microbial properties.



Solid Wood tops are available in both Maple and Oak, standard and custom sizes available.

Maple

Plank Ogee Walnut Stain



Plank Traditional Dark Cherry Stain



Plank Fluted Natural Stain



Plank Bullnose Dark Cherry Stain



Plank Traditional Cherry Stain



Plank Eased Dark Cherry Stain



Oak

Plank Traditional Walnut Stain



Plank Ogee Dark Cherry Stain



Plank Block Dark Cherry Stain



Plank Chamfer Dark Cherry Stain



Plank Bullnose Natural Stain



Plank Waterfall Light Cherry Stain



WOOD EDGE

In addition, we offer the same finish on our wood edge tops, with wood veneer or laminate surfaces from leading laminate suppliers such as Wilsonart, Formica, Nevamar, or Pionite. For more information, view our website: www.atcfurniture.com.

Oak Edge Block
1 1/4" x 1 1/4" Laminate



Oak Edge Bullnose
2" x 1 1/4" Laminate



Oak Edge Waterfall
1 3/4" x 1 3/4" Laminate



Oak Edge Waterfall
1 1/4" x 1 1/4" Laminate



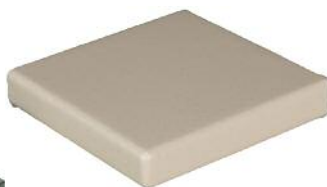
Oak Edge Waterfall
1 1/4" x 1 1/4" Laminate



Oak Edge Traditional
1 1/4" x 1 1/4" Laminate



Padded



Diner Edge



Self Edge Laminate



T-Molding Edge



VENEER AND MARQUETRY



ATCOWOOD™ tops can be made in beautiful veneers and patterns like sunburst, Diamonds, reverse diamonds, with borders inlaid...your imagination can be your guide. Atcwood tops can be made with real reclaimed oak, or new woods can be used and distressed to look old. Special woods like Zebrawood are also available. Some of our current offerings are presented here, but feel free to send us your own ideas for quoting.



Straight Veneer



Diamond Pattern



Marquetry



Square-to-Round Plank



Antiqued



Bullnose Inlaid Border Veneer



Compass Top



Diamond Box Qtr
Macassar Ebony veneer



Marquetry A



Marquetry C



Reclaimed Oak



Self Edge Wenge Veneer
with Poly Finish



Walnut and Maple
Butcher Block



Zebrawood Veneer with
2" wide Walnut Edge



Zebrawood Veneer

IN STOCK! TEAK

ATC features real plantation grown teak tops with a 1 1/8" edge profile, strong screw fabrication with reinforced slats for your choice of bases. ATC teak tops are fabricated, then weathered and sanded again to remain smooth in use. These are natural unfinished tops and will weather to a silver grey unless oiled or finished.



Square

SIZES AVAILABLE		
DIA 24	24 x 24	24x30
DIA 30	30 x 30	30x48
DIA 36	36 x 36	
DIA 42		
DIA 48		
DIA 60		



Round



Reverse Side - Heavy duty construction assures long service life. Mortise and tenon construction, screwed and glued, blocked and pinned.

Rectangle



ATCOSOLID™

ATCosolid tops are manufactured with a polyester surface backed by a solid resin substrate further backed with built-up fiberglass over plywood and honeycomb. The appearance is of a solid table and the decorative surface is about 1/8" thick. It is lighter weight than solid tables and won't warp, yet it is still field repairable. ATCosolid tops can be used outside in protected environments.



Riverstone Square



Buttercreme 24" Round



CORIAN® & STARON®

ATC features Genuine Corian and Staron by Samsung manufactured by an accredited "Gold Seal" fabricator offering a durable, classic, premium table top providing years of trouble-free service. Twenty-four standard colors are featured at standard prices with a 1" edge profile. Ogee, bullnose, semi-bullnose and beveled edges as well as premium colors are available at a reasonable upcharge. Some minimum quantities apply.



Staron® by Samsung

Genuine Corian®

Grade A							
	Sanded Icicle Si414	Sanded Gold Dust SG441	Sanded Grey SG420	Pebble Grey PG810	Savannah	Cobalt	
	Grade A						
		Pebble Saratoga PS820	Sanded Vermillion SV430	Sanded Mocha SM453	Aspen Mine AM633	Sahara	Sand
Grade A							
	Aspen Pepper AP640	Aspen Brown AB632	Sanded Dark Nebula DN421	Sanded Onyx SO423	Flint	Sandstone	
Grade B							
	Quarry Oyster TO310	Quarry Mesa QM242	Quarry Bluff QB244	Earthen Bark QL257	Moss	Platinum	

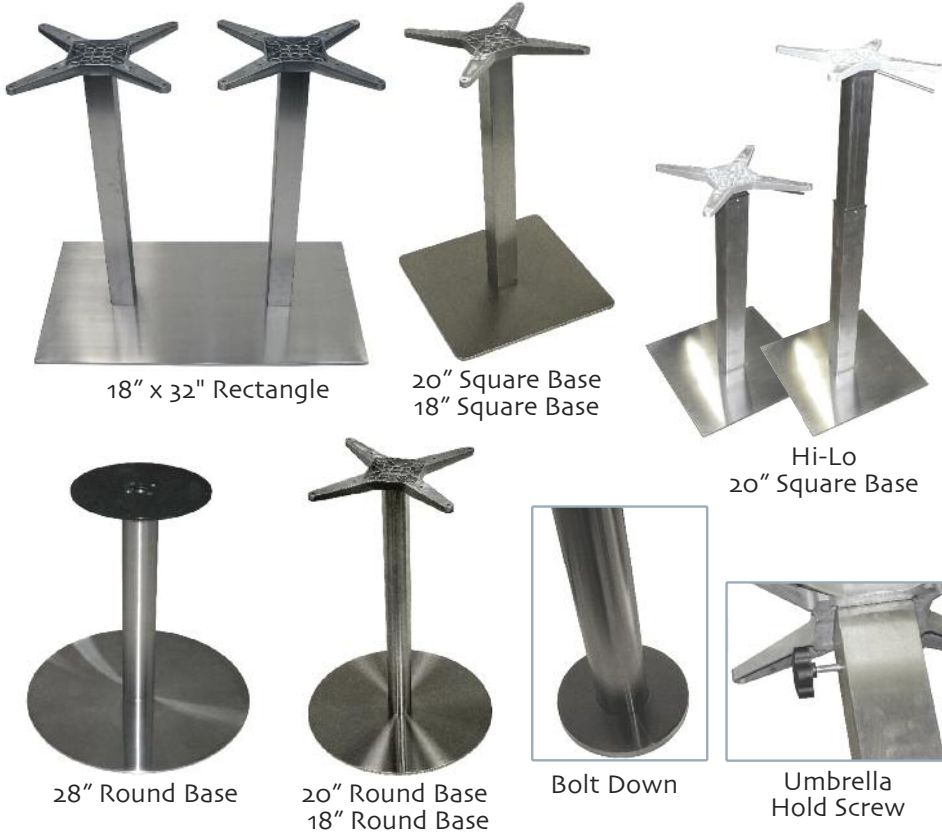


FUTURA

STAINLESS STEEL FUTURA

Futura Stainless Steel bases are manufactured in brushed 201 series stainless steel cladding powder coated steel to provide a beautiful, heavy, stable base that can be used outdoors with minimum maintenance.

Also available in Bar Height. 28" round and 20" square also available in models capable of being used with umbrellas.



18" x 32" Rectangle

20" Square Base
18" Square Base

Hi-Lo
20" Square Base

28" Round Base

20" Round Base
18" Round Base

Bolt Down

Umbrella
Hold Screw

BLACK FUTURA

Futura Black bases are manufactured in galvanized mild steel for corrosion resistance and then double powder-coated for protection. They can be used outdoors with minimum maintenance.



20" Square
Bar Height

20" Round

18" x 32" rectangle



STAINLESS STEEL AMANDA

Amanda is a stainless steel base line complete with matching nesting flip base. Constructed in sturdy 201 Stainless Steel, it is ideal for places where corrosion is a problem. Amanda Bases have stainless steel columns and are also available in bar heights.



Detail of Amanda
flip mechanism



Amanda 4 Small

Amanda 4 Medium

Amanda 4 Large

Amanda Rectangle

Amanda "Flip"

IN STOCK!

ECONOX™

Stainless Steel clad bases with aluminum spyders and columns



Econox™ 3



Econox™ 4



Econox™ 4 Bar Height



Econox™ Rectangle



Econox™ Rectangle Bar Height

BASES

IN STOCK!

ASPEN

RAINBOW



This American Trading Company exclusive has a cast aluminum base plate for long life exterior use. Aspen is available in clear coat brushed finish or pepper powder coat.



Pepper Finish



Cart can be used with Aspen, Amanda & Rainbow



Clear Coat Bar Height Flipped

Introducing the Rainbow flip base. Made of anodized extruded aluminum, it will never rust or corrode making it ideal for waterfront locations. It nests like the Amanda and Aspen and can use the same cart.

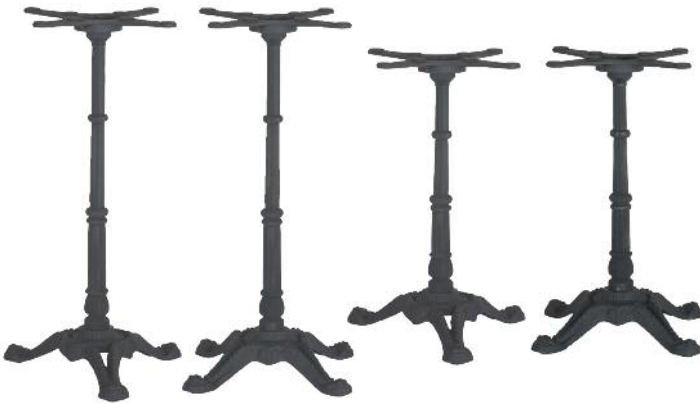


CAST IRON

IN STOCK!

BISTRO

Limited outdoor use advised



Bistro Tabletop Attachment Detail



Two fasteners prevent turning



Base Foot Detail

IN STOCK!

B-SERIES

Indoor Use Only

Also available in Bar Height

22" x 5"

22" x 22"



30" x 30"

36" x 36"



22" x 30"



C-SERIES

Indoor Use Only



18" DIA
22" DIA
28" DIA

Standard Black Wrinkle Finish

LITCHFIELD

Indoor Use Only



22" x 22"
26" x 26"



32" x 32"

ELGIN

Indoor Use Only



Shown in Standard Black Wrinkle Finish

COOPER

Indoor Use Only



Shown in Chrome Premium Finish

ASHLEY

Indoor Use Only



Shown in Brushed Premium Finish

All bases are available in 18" DIA, 22" DIA and 30" DIA.



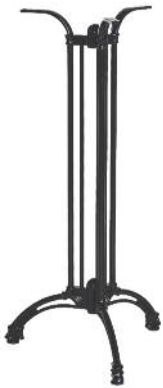
CAST ALUMINUM

ANDALUSIA

Note: Andalusia available in black only



Andalusia 3



Andalusia 3 Bar Height



Andalusia 3 Special



Andalusia 3 Special Bar Height



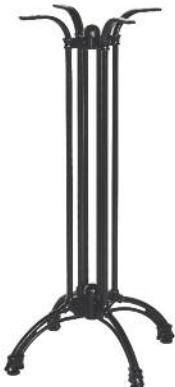
Andalusia Rectangle



Andalusia Rectangle in Bar Height



Andalusia 4



Andalusia 4 Bar Height



Andalusia 4 Special



Andalusia 4 Special Bar Height



STONE

Heavyweight cast aluminum for heavy and large tables. Stone bases available in Small, Medium, and Large Sizes, plus rectangle. Ideal for Atcostone and Granite tables.



BASES



JENNIFER

Cast Aluminum Bases with added weights



Jennifer-3 Pepper Powdercoat



Jennifer-3 Polished



Jennifer-4 Polished



Jennifer-5 Polished



Jennifer-4 Bar Height Polished



Jennifer Rectangle Black Pepper



Jennifer Rectangle Polished

Note: All Jennifer bases are available in both polished clear coat or black pepper finish, as well as bar height.



Standard "D" ring for chaining with purse hook

ADA Compliant WheelChair Accessible Patent Pending Used with 32" x 48" table only.



CAST ALUMINUM



Antique Bronze

IN STOCK! EMPIRE



Arm Chair



Barstool

IN STOCK! DIRECTOR



Arm Chair



Barstool

IN STOCK! CAPE COD

Cast aluminum seat & back with tubular aluminum frame



Barstool



Arm Chair



Bench

NANTUCKET



Arm Chair



Bench

Empire creates a Deco look in sturdy cast aluminum stackable armchairs. Director recalls the classic director's chair in durable cast aluminum. Cape Cod and Nantucket marry castings with tubing to present a cast look at very affordable pricing. Weave tables offer a smooth surface but tricks the eye to think it undulates. All durably powder coated and hand decorated to present an antique bronze look.

IN STOCK! WEAVE
Solid cast aluminum



42" and 48" DIA

42" Bar Height



30" DIA



Side Table
18" x 18" x 18"



Large Rectangle



Small Square

SIZES AVAILABLE		
DIA 30	18 x 18	38x60 47x102
	24 x 24	
	32 x 32	
	36 x 36	
DIA 42		
DIA 48		



Weave Close-Up

Tables are sold complete with bases



TEAK

ATC presents genuine plantation grown commercial grade teak seating. The Alice folding chair folds flat and opens easily with no pinch points or hardware to fasten. Reno and Vegas arm and side chairs stack. The Vegas barstool also complements the Vegas chairs and is sturdily braced. The Hawaii bench is ideal for waiting areas or booth seating. All ATC teak seating is fabricated then weathered and sanded again to remain smooth in use. These are natural, unfinished items and will weather to a silver grey unless oiled or finished.



Hawaii Bench



Vegas Barstool



Vegas Arm Chair



Vegas Side Chair



Alice Folding Chair



Alice Folding Chair



Reno Arm Chair



Reno Side Chair

IN STOCK!

JESSIE

Stackable Chairs and Barstools

Powder coated heavy weight aluminum frame with polyethylene weaving



Barstool (Espresso)



Side Chair (White)



Arm Chair (Espresso)



Arm Chair (Espresso)

HAWAII

Stackable Chairs



Side Chair (White)

Aluminum Frame and polyethylene weave



Side Chair (Hawaii PCC)

TAHITI

Stackable Chairs

Heavy weight black pepper powder-coated aluminum frames featuring tapered legs and star weaving in polyethylene. Cushions are optional.



Ruby

SANTORINI

Stackable Chairs



Shown in Granite Grey

IN STOCK!

FIJI

Stackable Chairs

Powder coated heavy weight aluminum frame with polyethylene weaving



Star Weave (Espresso)



Standard Weave (Espresso)

BALLINA

Stackable Chairs and Barstools

Ballina Series is manufactured with heavy duty aluminum frames and unique polyethylene weaving. Also available in Standard Weaving. Cushion is optional



Barstool (White)



Arm Chair (Espresso)



Side Chair (Espresso)

IN STOCK!

ARUBA I

Stackable Chairs (Barstools are not stackable)

Powder coated heavy weight aluminum frame with polyethylene weaving

Note: Aruba I available in Espresso only



Espresso Round Weave Detail



Black Pepper Finish Detail



Side Chair (Espresso)



Arm Chair (Espresso)



Barstool (Espresso)

IN STOCK!

ARUBA II

Stackable Chairs (Barstools are not stackable)

Powder coated heavy weight aluminum frame with polyethylene weaving



Espresso Weave Detail



New Natural Weave Detail



Granite Grey Weave Detail



Side Chair (New Natural)



Arm Chair (Granite Grey)



Arm Chair (Espresso)



Barstool (Espresso)

IN STOCK!

OVIEDO

Stackable Chairs (Barstools are not stackable)

Powder coated heavy weight aluminum frame with polyethylene weaving



Arm Chair
(Espresso)



Side Chair
(Granite Grey)



Side Chair
(New Natural)



Barstool
(Espresso)

IN STOCK!

VILLA

Powder coated heavy weight aluminum frame with polyethylene weaving



Corner Bench



Standard 48" Villa outdoor booth bench
(Espresso)



Villa Deuce Booth
(Espresso)



ISABELLA

Stackable Chairs

Powder coated heavy weight aluminum frame with polyethylene weaving



Side Chair
(Expresso)



Arm Chair
(New Natural)



Arm Chair
(Expresso)

CHAIRS



PREMIER

Stackable Barstools



Barstool
(Expresso)



Backless Barstool
(Expresso)



Arm Chair
(Granite Grey)



TATTA

The Tatta family expands to include classically styled dining furniture. Heavy duty aluminum framed barstools, side chairs and arm chairs with elegant wide polyethylene weave is ideal for resorts, restaurants and clubs.



Dining Table
Rectangle



Dining Table
Square



Barstool
(White)



Side Chair
(Expresso)



Arm Chair
(Chocolate)



Arm Chair
(White)

LOTUS

Lotus presents a dining scaled club chair which doubles as a lounge chair. Raised skirt is swept back for comfortable dining. Lotus adds elegance to any setting.



Dining Club Chair



PISA

Pisa is a larger scaled club style chair with cane style weaving. Raised and swept back skirt maximizes comfort for dining in a relaxing upscale atmosphere. Heavyweight marine grade aluminum tubing and tight UV protected polyethylene weaving assures long life.

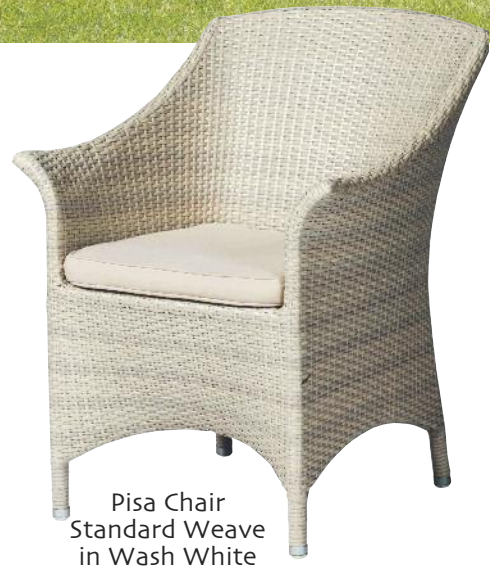


CHAIRS



Pisa Chair
Cane Weave
in Espresso

Shown with
optional
cushions



Pisa Chair
Standard Weave
in Wash White

RESIN



ATCOMfort™ Seating is ergonomically designed for comfort and conceived to be 100% recyclable for environmental concerns. The Resin seating series is manufactured from polypropylene reinforced with chopped fiber glass to be completely resistant to the elements. All feature UV inhibitors to resist color changes. Domenica features matte finished anodized aluminum legs. These chairs are light-weight yet strong, spacious and comfortable, yet compact and classically modern. These are affordably priced and offer exceptional value as do all American Trading Company products.



DOMENICA Stackable Chairs and Barstools

Note: Domenica and Martinique are available in Black, Red, Orange, Green, Grey, Ivory & White.



Arm Chair
(Red)



Arm Chair
(Green)



Arm Chair
(Black)



Barstool
(Green)



Side Chair
(White)



Side Chair
(Orange)



Side Chair
(Red)



Barstool
(Orange)

IN STOCK!

MARTINIQUE

Stackable Chairs



Side Chair (Black)



Arm Chair (Grey)



Side Chair (Orange)



Side Chair (Red)



Side Chair (Green)



Side Chair (White)



Side Chair (Grey)

IN STOCK!

VERONA

Stackable Chairs



Side Chair (Espresso)



Side Chair (White)

CAPRI

Stackable Chairs



Arm Chair (Espresso)



Arm Chair (White)

IN STOCK!

FLORIDA

Stackable Chairs and Barstool



Side Chair (Espresso)

Barstool (Espresso)



IN STOCK!

IBIZA

Stackable Chairs



Arm Chair (Espresso)

FAUX RATTAN

American Trading Company has reproduced the tropical look of rattan as a finish on durable, rust-free and rot-free aluminum tubing. Parisienne chairs and barstools are stocked in five classic color combinations.

PARISIENNE Stackable Chairs and Barstools



Arm
Chair
(stacked)

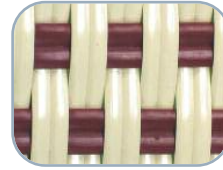


Barstool



Side
Chair

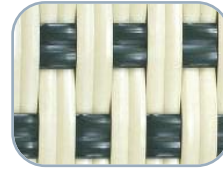
Available Weaves:



Ivory Red



Ivory Honey



Ivory Green



Ivory Black



White Blue

IN STOCK!

IN STOCK!

IN STOCK!

KEY WEST Stackable Chairs and Barstools

Aluminum imitation rattan with textilene upholstery.



Arm Chair



Side Chair



Barstool

More formal styled, Key West is stocked in neutral ivory-beige textilene.



Textilene Detail

IN STOCK!

MANHATTAN

Stackable Chairs and Barstools

A classic presented by ATC; Side chairs and barstools are available in perforated type 304 stainless steel, or solid steel-zinc treated and powder-coated for long life. Armchairs are available in solid steel only. Optional bamboo or PVC seats also available.



Stainless Mesh Detail

Available Colors:



Gun Metal



White



Red



Green



Black



Yellow



Barstool (Yellow)



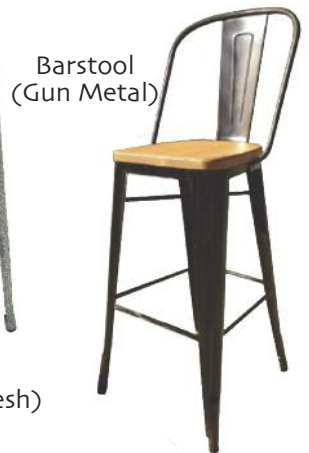
Barstool (Green)



Barstool (Red)



Barstool (Stainless Mesh)



Barstool (Gun Metal)



Side Chair (Stainless Mesh)



Side Chair (Red)



Side Chair (Gun Metal)



Side Chair (White)



Side Chair (Black)



Side Chair (Green)



Side Chair (Yellow)



Arm Chair (Red)



Arm Chair (Green)



Arm Chair (Yellow)



Arm Chair (White with Wood Seat)

CHAIRS



CATALINA

Stackable Chairs

Catalina is fabricated from heavy aluminum sheet and tube into strong, contemporary, resistant chairs.



Arm Chair
(Silk Grey)



Side Chair
(Silk Grey)



Side Chair
(Textilene)



Arm Chair
(Textilene)



ELEGANCE - TEAK

Elegance is heavy duty marine grade aluminum tubing, powder coated in our exclusive black pepper. Natural or faux teak available.



Elegance Teak
Barstool



Elegance Teak
Side Chair



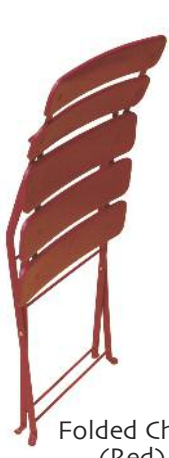
Elegance Teak
Arm Chair

IN STOCK!

JARDIN

Foldable Chairs and Tables

Jardin re-creates a classic bistro look in heavy-weight zinc treated powder coated steel. Light and strong, both chairs and tables fold compactly for storage. Stocked in four iconic colors, Jardin is ideal for seasonal operations, ideal for "extra" seating, ideal for tight budgets, and ideal when space is limited.



Folded Chair (Red)



(Blue)



(Green)



(Gun Metal)



(Red)



28 x 44 Table (Red)



28 x 28 Table (Red)



28 x 28 Table (Red)

CHAIRS

IN STOCK!

FLEET

ATC presents Fleet, a heavy-duty welded construction, brushed finish welded anodized aluminum seating family.



Arm Chair



Side Chair



Side Chair (Back)



Armless Barstool

IN STOCK!

CURACAO

Stackable Side and Arm Chairs

Powder coated heavy weight aluminum frame with teak wood slats.



Arm Chair



Side Chair



Barstool



Armless Barstool
in optional black pepper finish.

IN STOCK!

TOLEDO

Stackable Arm Chairs

Toledo presents a modern classic style in a stackable, welded, polished and anodized aluminum interpretation.



Arm Chair



Arm Chair
(Back)



Barstool

IN STOCK!

SOUTH BEACH

Stackable Club and Side Chairs

Anodized welded heavy weight aluminum frame with PVC seat and back



Barstool (Black)



Side Chair (Blue)



Club Chair (Black)



Club Chair (Blue)



Club Chair (Green)



Club Chair (Red)



Club Chair (Grey)



Club Chair (Stacked)

EDINA II

Stackable Side Chairs

Colorful, playful design reminiscent of classic bentwood, interpreted in reinforced aluminum tubing with UV resistant polyethylene weaving.



Side Chair (Apple Green)



Side Chair (Bay Brown)



Side Chair (Blue)



Side Chair (Feather)



Side Chair (Orange)



Side Chair (Red)



Side Chair (White)



Side Chair (Yellow)



Cross Section of Tube Detail

CHAIRS

FABRIC COLORS

Stripes and Dupione are shown 1/5 of actual size, see website for actual size. Cushions are available in the colors shown here in selected popular Sunbrella or OutDura outdoor fabrics.



OD 4750
Persuit Aqua Stripe



OD 7901
Bay Street Shipper



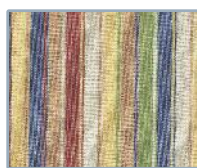
SB 56001
Dolce Oasis



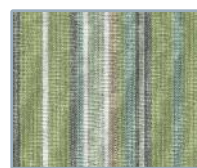
SB 5601
Bravada Salsa



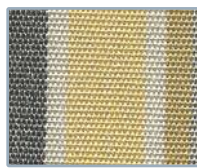
SB 5603
Harwood Crimson



SB 5604
Castanet Beach Stripe



SB 56049
Foster Surfside



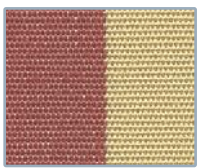
SB 56051
Foster Metallic



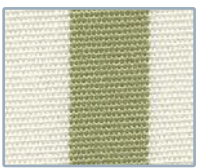
SB 5630
Green & White Stripe



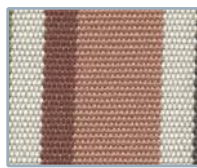
SB 5698
Dorsett Autumn



OD 3004
Captiva Cassel Stripe



OD 3008
Captiva Tidewater Stripe



OD 2010
Passage Island



SB 8012
Dupione Corn Silk



SB 40236
Dupione Marcello Sunset



SB 8053
Dupione Papaya



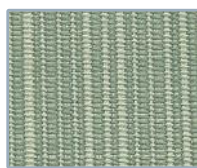
SB 8014
Dupione Maize



SB 8066
Dupione Latte



SB 8017
Dupione Walnut



SB 8058
Dupione Seafoam



SB 5404
Natural White



SB 5472
Birds Eye



SB 5453
Canvas



SB 5438
Buttercup



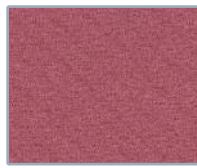
SB 5435
Corn silk



SB 5428
Glacier



SB 5410
Air Blue



SB 5462
Capri



SB 5452
Sapphire Blue



SB 5401
Pacific Blue



SB 5499
True Blue



SB 5439
Navy Blue



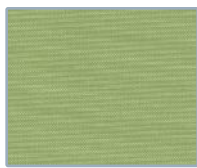
SB 5419
Celadon



SB 5413
Spa



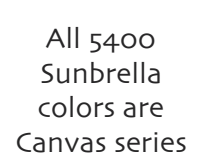
SB 5473
Stone Green



SB 5405
Parrot



SB 54011
Ginkgo



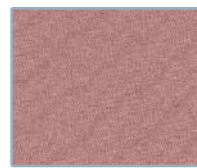
All 5400
Sunbrella
colors are
Canvas series



OD 5428
Olive



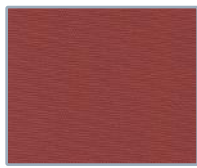
SB 5446
Forest Green



SB 5427
Coral



SB 5462
Hot Pink



SB 5403
Jockey Red



SB 48027
Spectrem Grenadine



SB 5409
Brick



SB 5440
Terra Cotta



SB 5436
Burgundy



SB 5415
Melon



SB 5406
Tangerine



SB 5417
Tuscan



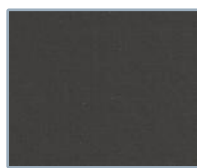
SB 5422
Antique Beige



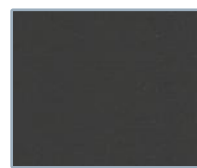
SB 5476
Heather Beige



SB 48029
Spectrum Coffee



SB 5470
Walnut



SB 5408
Black

LOUNGE FURNITURE

American Trading Company offers a full range of lounge furniture through its TropiCasual collection. Here are just a few examples. The Tatta is stocked in Espresso and Wash White. Visit www.tropi-casual.com or call us or your local representative for more information.

IN STOCK!

TATTA

Sofa

Arm Chair

Ottoman

Coffee Table

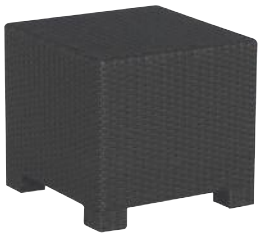


Contract quality sofas, coffee tables, ottoman, planters, tables and accessories are presented by ATC. Shown here are Tatta sofas which are also available as sectionals in different scales of sizes to fit a variety of spaces from waiting areas to lounges to lobbies. Jessie tables extend the woven rattan look to tables in heavy marine grade aluminum framing under UV protected polyethylene weaving. All are weather-resistant, good looking and durable.

IN STOCK!

JESSIE

Tatta Cube



Bar Table



Dining Table



Tatta



CHAIRS

UMBRELLAS

ATC umbrella selections are chosen to provide shade with a minimum of fuss and maintenance. Only marine grade, 9 ounce, acrylic fabrics are used. Wind vents are standard on most grades of umbrellas. Designed for function, durability, and beauty our umbrellas are offered with aluminum, wood and fiberglass ribs.

AURORA UMBRELLA

ATC introduces Aurora as a medium duty 10 foot square or 11 foot octagon cantilever. Aurora comes with either a four 50 lb paver style base, a bazooka in-ground base or a bolt down base. The extruded anodized aluminum pole comes standard with a crank lift and wind vent. Available in 22 standard colors as shown on page 39.



UMBRELLAS

ECLIPSE UMBRELLA

ATC presents Eclipse, an oversized, cantilevered or offset heavy-duty, aluminum frame umbrella designed for semi-permanent installation. Available in a 10 foot square or 13 foot octagon, the entire unit can be swiveled 360 degrees with the special mounting plates, and Eclipse also tilts to offer maximum shading from the sun. Wind stabilizer comes standard. Choose your colors on page 39.



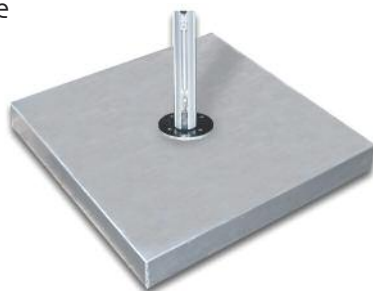
GIANT UMBRELLA

ATC presents Giant, an oversized, heavy-duty, room sized, aluminum frame, umbrella designed for semi-permanent installation. Available in 13 foot square or 16 foot octagon, the Giant offers unequalled durability and stability. Choose from available colors on page 39.



AURORA, ECLIPSE AND GIANT MOUNTING SYSTEMS

Eclipse and Giant Umbrella mounting systems provide stable attachments for these large umbrellas. The Eclipse system can be bolted to a deck, lagged into concrete, or an anchor can be buried in concrete, and a 360 degree rotation provided. The Giant system also can be bolted or lagged, or the buried anchor used, but without the rotation. In addition a 500 lb free standing mounting frame is also available if bolting systems cannot be used, at the beach for example.



UMBRELLAS

ROUND PATIO UMBRELLAS



7 1/2 Foot Steel Rib



7 1/2 Foot Fiberglass Rib

Available in 7 1/2 foot diameter sizes with either zinc plated steel or fiberglass ribs. Poles are 1 1/2" diameter anodized aluminum (with steel ribs) or aluminum finished in white or wood grain (with fiberglass ribs). Valances are standard.

BASES



50lbs Steel
Black and White



70lbs Resin Clad Concrete
Available in Bronze, Black and White



75 lb Steel
Available in Black and White



50lbs Resin Clad Concrete
Available in Bronze, Black and White



100 lb Aluminum Clad Concrete



Bazooka
in-ground
mounting
base

POLES



Bronze
Tone



Wood Pole
With
Brass Joint



Black



Wood
Grain



Silver
Mist



White

All Market umbrella ribs are field replaceable. Fiberglass ribs on market umbrellas are 1/2" diameter. Wooden ribs are 3/4" x 1 1/8" and aluminum ribs are 3/4" x 3/4". Extra long poles are available for bar height tables.



Logo Printing Available

OCTAGONAL MARKET UMBRELLAS

Available in 7 1/2, 9 and 11 foot diameter sizes with fiberglass or aluminum ribs. Wooden rib umbrellas are available in 7 1/2 foot and 9 foot with a matching 1 1/2" diameter wooden pole. Aluminum rib umbrellas come standard with matching silver mist finished 1 1/2" diameter heavy duty aluminum pole. Fiberglass ribs are finished in white, bronzetone, black or wood grain with matching finish on 1 1/2" diameter heavy duty aluminum poles. Wind vents and pulley pull up with locking pins are standard.



Aluminum Rib



Wood Rib



Fiberglass Rib

SQUARE MARKET UMBRELLAS

Available in 6 1/2 and 7 1/2 foot square with fiberglass or aluminum ribs. Aluminum rib umbrellas come standard with silver mist finished 1 1/2" diameter heavy duty aluminum poles. Fiberglass ribs are finished in white, bronzetone, black or wood grain with matching finish on heavy duty 1 1/2" diameter aluminum poles. Single wind vent, pulley pull up and round finial is standard.



Fiberglass Rib (also available in Aluminum Rib)

AVAILABLE COLORS

- Black
- Brown
- Burgundy
- Red
- Terra Cotta
- Forest Green
- Capri Blue
- Navy Blue
- Pacific Blue
- Linen
- Toast
- Natural
- Red Stripe
- Yellow Stripe
- Teal Stripe
- Blue Stripe
- Turquoise Stripe
- Cadet Grey
- Orange
- Yellow
- Pistachio
- Turquoise



12 Headley Place • Fallsington, PA 19054
Phone: 215-295-4040 • Fax: 215-295-4488
Sales@atcfurniture.com • www.atcfurniture.com

2015-03-15
7000-REGENT PROMOTIONS • (812) 401-1350