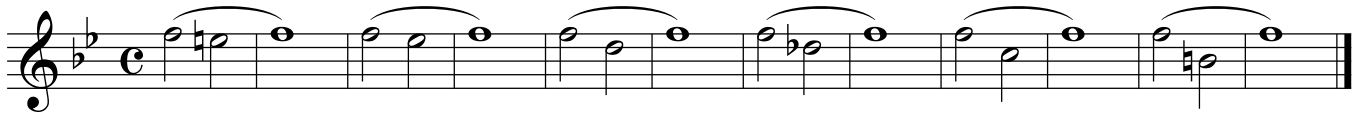


Band Warmups

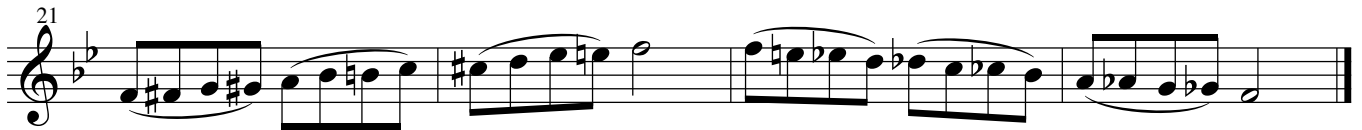
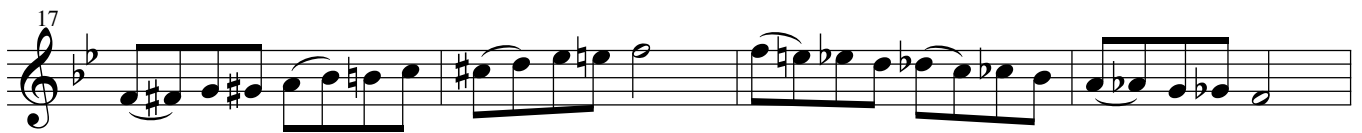
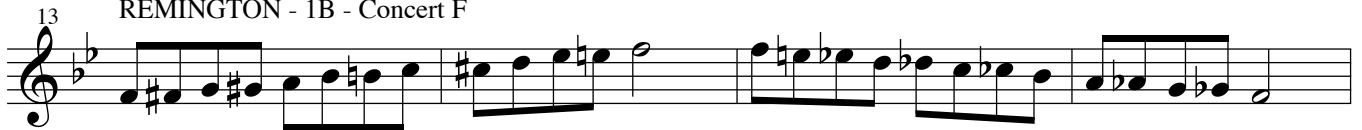
**Where there are "A" and "B" parts, these may be played separately or simultaneously.*

C Treble Clef
Flute, Piccolo, Oboe

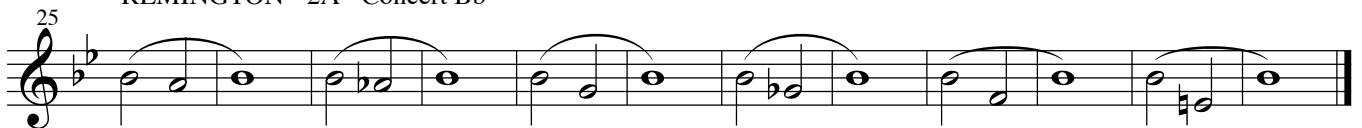
REMINGTON - 1A - Concert F



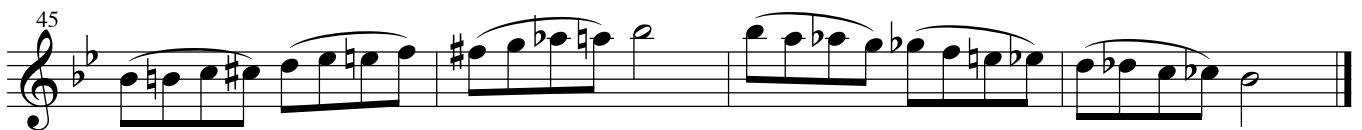
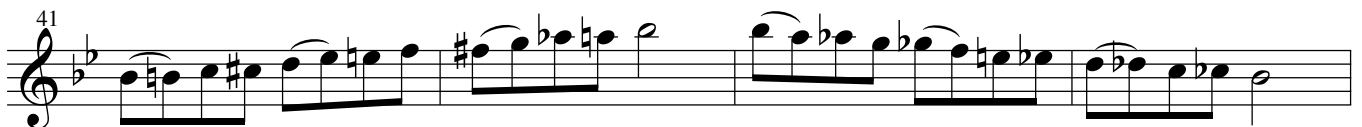
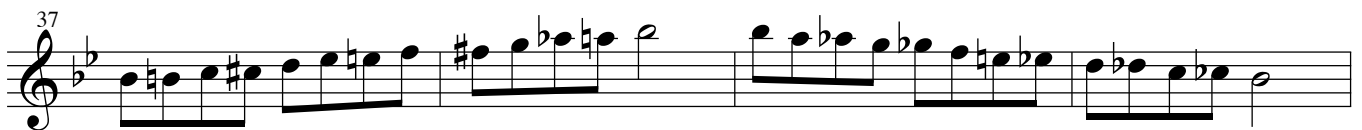
REMINGTON - 1B - Concert F



REMINGTON - 2A - Concert Bb



REMINGTON - 2B - Concert Bb



49 FLEXIBILITY - 1A

Musical staff for FLEXIBILITY - 1A, measures 49-56. The staff is in C major with a treble clef. It contains a sequence of eighth and sixteenth notes with various slurs and ties.

61 FLEXIBILITY - 1B

Musical staff for FLEXIBILITY - 1B, measures 61-66. The staff is in C major with a treble clef. It contains a sequence of eighth and sixteenth notes with various slurs and ties.

67 FLEXIBILITY - 1B

Musical staff for FLEXIBILITY - 1B, measures 67-72. The staff is in C major with a treble clef. It contains a sequence of eighth and sixteenth notes with various slurs and ties.

73 FLEXIBILITY - 2A

Musical staff for FLEXIBILITY - 2A, measures 73-78. The staff is in C major with a treble clef. It contains a sequence of eighth and sixteenth notes with various slurs and ties.

85 FLEXIBILITY - 2B

Musical staff for FLEXIBILITY - 2B, measures 85-90. The staff is in C major with a treble clef. It contains a sequence of eighth and sixteenth notes with various slurs and ties.

91 FLEXIBILITY - 2B

Musical staff for FLEXIBILITY - 2B, measures 91-96. The staff is in C major with a treble clef. It contains a sequence of eighth and sixteenth notes with various slurs and ties.

FLEXIBILITY - 3

C Treble Clef

97

103

Musical notation for FLEXIBILITY - 3, measures 97-103. The piece is in C major with a treble clef. It consists of two staves of music. The first staff starts at measure 97 and the second at measure 103. The music features a sequence of eighth notes with slurs, followed by a fermata on a whole note. The notes are: G4, A4, B4, C5, B4, A4, G4, F4, E4, D4, C4.

FLEXIBILITY - 4

109

115

Musical notation for FLEXIBILITY - 4, measures 109-115. The piece is in C major with a treble clef. It consists of two staves of music. The first staff starts at measure 109 and the second at measure 115. The music features a sequence of eighth notes with slurs, followed by a fermata on a whole note. The notes are: G4, A4, B4, C5, B4, A4, G4, F4, E4, D4, C4.

TUNING #1 in Concert Bb Major

**Separate the ensemble into groups or everyone pick a note.*

121

Musical notation for TUNING #1, measures 121-127. The piece is in Bb major with a treble clef. It consists of a single staff of music. The music features a sequence of chords with a fermata on the final chord. The chords are: Bb4, C5, Bb4, A4, G4, F4, E4, D4, C4.

TUNING #2 in Concert F Major

**Separate the ensemble into groups or everyone pick a note.*

128

Musical notation for TUNING #2, measures 128-134. The piece is in F major with a treble clef. It consists of a single staff of music. The music features a sequence of chords with a fermata on the final chord. The chords are: F4, G4, A4, Bb4, C5, Bb4, A4, G4, F4.

TUNING #3 in Concert F Major

**Divide the ensemble into 3 groups, such as "top" "middle" and "root". This exercise may be extended by continuing from the fermata chord and following the same pattern of alterations.*

135

Musical notation for TUNING #3, measures 135-141. The piece is in F major with a treble clef. It consists of a single staff of music. The music features a sequence of chords with a fermata on the final chord. The chords are: F4, G4, A4, Bb4, C5, Bb4, A4, G4, F4.

Technique Studies #1A

MAJOR SCALE

MAJOR ARPEGGIO

The image displays a musical score for 'Technique Studies #1A', divided into two sections: 'MAJOR SCALE' and 'MAJOR ARPEGGIO'. The score consists of ten staves of music, each beginning with a measure number and a key signature. The first section, 'MAJOR SCALE', covers measures 142 to 195. The second section, 'MAJOR ARPEGGIO', covers measures 196 to 202. Each staff contains a sequence of notes, primarily eighth notes, with a double bar line and repeat sign in the middle of each line. The key signatures for the ten staves are: 1. C major (no sharps or flats), 2. D minor (two flats), 3. E major (two sharps), 4. F major (one flat), 5. G major (one sharp), 6. A major (three sharps), 7. B major (three sharps), 8. C minor (three flats), 9. D major (two sharps), and 10. E major (two sharps).

208

214

220

This section contains three staves of music. The first staff (measures 208-213) is in G major. The second staff (measures 214-219) is in D major. The third staff (measures 220-225) is in G major. Each staff contains six measures of music, with a double bar line after the third measure.

TECHNIQUE STUDIES #1B (Major Keys)

226

232

238

244

250

256

262

268

This section contains eight staves of music, each with six measures. The keys are: 226-231 (G major), 232-237 (D major), 238-243 (G major), 244-249 (D major), 250-255 (G major), 256-261 (D major), 262-267 (G major), and 268-273 (D major). Each staff contains six measures of music, with a double bar line after the third measure.

274

280

286

292

298

304

TECHNIQUE STUDIES #2 (Major Keys)

310

317

324

331

Articulation (Tonguing) Exercises

Use single tonguing for exercises 1 - 4. For the Double- and Triple-tonguing exercises, use the indicated patterns with either the "Tu" syllable produced with the front of the tongue or the "ku" syllable produced with the back.

Articulation #1

A musical staff in common time (C) starting with a whole note, followed by two measures of quarter notes, and ending with a whole note.

Articulation #2

A musical staff in common time (C) starting with a whole note, followed by two measures of quarter notes, and ending with a whole note.

Articulation #3

A musical staff in common time (C) starting with a whole note, followed by two measures of quarter notes, and ending with a whole note.

Articulation #4

A musical staff in common time (C) starting with a whole note, followed by two measures of quarter notes, and ending with a whole note.

Double Tonguing

Two musical staves for double tonguing exercises. The first staff has a melody with lyrics: tu tu tu tu tu ku tu ku tu tu tu tu tu tu tu tu ku tu ku tu ku tu ku. The second staff has a more complex rhythmic pattern with lyrics: tu tu tu tu tu tu tu tu tu ku tu ku tu ku tu ku tu tu tu tu tu tu tu tu tu ku tu ku tu ku tu ku tu.

Triple Tonguing

Two musical staves for triple tonguing exercises. The first staff has a melody with lyrics: tu tu tu tu tu tu tu tu tu tu tu ku tu tu ku tu tu ku tu tu. The second staff has a more complex rhythmic pattern with lyrics: tu tu tu tu tu tu tu tu tu tu tu tu ku tu tu ku tu tu ku tu.