

# Band Warmups

*\*Where there are "A" and "B" parts, these may be played separately or simultaneously.*

C Bass Clef  
Trombone, Baritone B.C., Bass

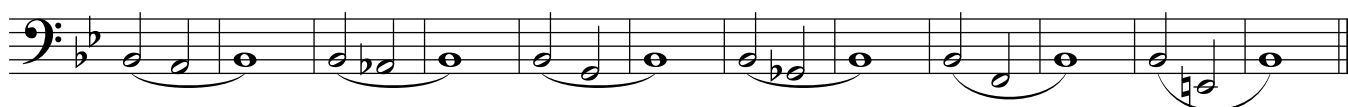
## REMINGTON - 1A - Concert F



## REMINGTON - 1B - Concert F



## 25 REMINGTON - 2A - Concert Bb



## 37 REMINGTON - 2B - Concert Bb



FLEXIBILITY - 1A

C Bass Clef

49

FLEXIBILITY - 1B

61

67

FLEXIBILITY - 2A

73

FLEXIBILITY - 2B

85

91

FLEXIBILITY - 3

C Bass Clef

97

103

FLEXIBILITY - 4

109

115

TUNING #1 in Concert Bb Major

*\*Separate the ensemble into groups or everyone pick a note.*

121

TUNING #2 in Concert F Major

*\*Separate the ensemble into groups or everyone pick a note.*

128

TUNING #3 in Concert F Major

*\*Divide the ensemble into 3 groups, such as "top" "middle" and "root". This exercise may be extended by continuing from the fermata chord and following the same pattern of alterations.*

135

Technique Studies #1A

MAJOR SCALE

MAJOR ARPEGGIO

142



148



154



160



166



172



178



184



190



196



202



208



214



220



### TECHNIQUE STUDIES #1B (Major Keys)

226



232



238



244



250



256



262



268



274

280

286

292

298

304

TECHNIQUE STUDIES #2 (Major Keys)

310

317

324

331

338

345



352



359



366



373



380



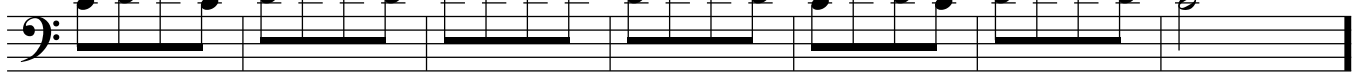
387



394



401



408



