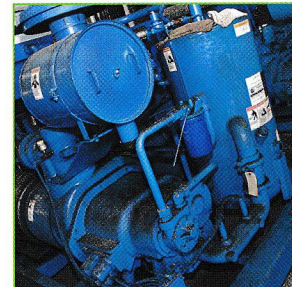


CP-1516 Series Lubricants

CP-1516 Series lubricants are a unique custom blend of polyalkylene glycols with additive enhancement that delivers all of these key features:

- Excellent oxidation stability
- Superior corrosion protection
- Metal deactivation
- Excellent lubricity
- Thermal stability
- Low ash content
- High viscosity
- Shear stability



These high performance lubricants are recommended for use in:

- Flooded rotary screw compressors
- Propane refrigeration

Your local CPI representative can help you determine the appropriate product and viscosity for your needs.



All CPI lubricants are Kosher, Pareve, and Halal registered.

Preliminary Product Selection Guide

Product Name	Physical Properties*				
	Viscosity @ 40° C cSt ASTM D445	Viscosity @ 100° C cSt ASTM D445	Viscosity Index ASTM D2270	Pour Point °F (°C) ASTM D97	Flash Point °F (°C) ASTM D92
CP-1516-68	61.5	10.8	168	-55 (-48)	425 (229)
CP-1516-100	92.3	18.6	223	-40 (-40)	500 (260)
CP-1516-150	153	23.5	184	-30 (-34)	500 (260)
CP-1516-220	219	35.9	214	-25 (-32)	500 (260)

* These values are not intended for use in preparing specifications. For assistance, consult your CPI representative.



REPRESENTATIVE

Rolenor USA LLC

4801 Woodway, Suite 306 · Houston, TX 77056

832-308-9332 · email: sales@rolenor.com