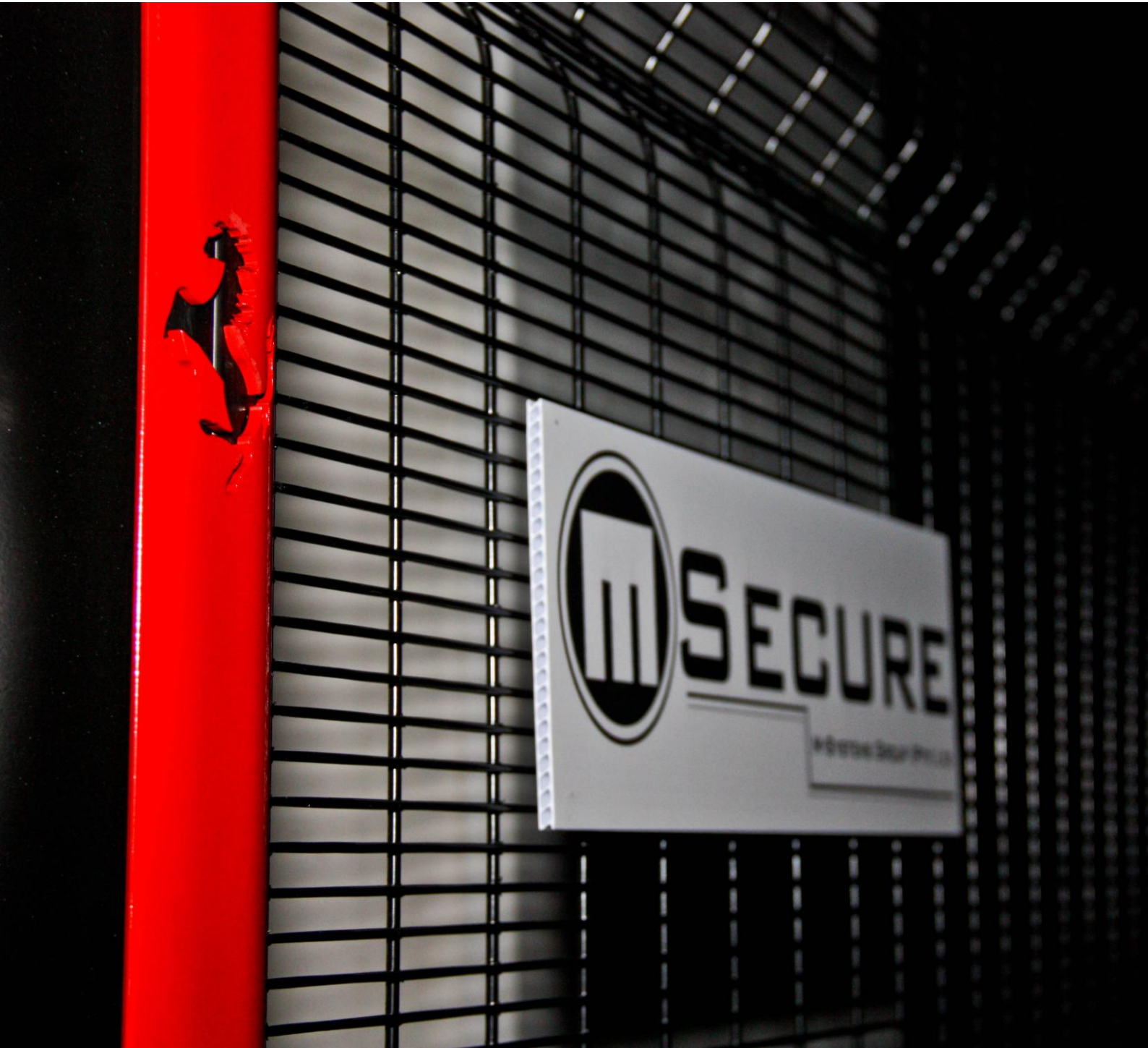


 **M-SECURE**  
M-SYSTEMS GROUP (PTY) LTD

[WWW.MSYSTEMS.CO.ZA](http://WWW.MSYSTEMS.CO.ZA)

M3 AND M4 COMPLETE SECURITY SOLUTION

[INFO@MSYSTEMS.CO.ZA](mailto:INFO@MSYSTEMS.CO.ZA)



P.O. BOX 3032 | 37 INDUSTRIAL RD.  
KENMARE | BOLTONIA,  
1745 | KRUGERSDORP  
1740

TEL: +27 11 769-1440  
FAX: +27 11 769-1449

[WWW.MSYSTEMS.CO.ZA](http://WWW.MSYSTEMS.CO.ZA)

[INFO@MSYSTEMS.CO.ZA](mailto:INFO@MSYSTEMS.CO.ZA)

THE M-SECURE PRODUCT OFFERS THE MAXIMUM IN SECURITY AND COST EFFECTIVENESS WHILST BEING UNOBTRUSIVE. BEING HIGHLY VERSATILE THIS SYSTEM CAN FOLLOW CONTOURS, ACHIEVE ANGLES AND SECURE MOST OBSTRUCTIONS LIKE PIPES AND DRAINS.



FABRICATED FROM 3 OR 4 MM WIRE WITH APERTURES OF 12.7 X 75 (H X W) MAKING IT EXTREMELY UNLIKELY TO BE BREACHED, PROVIDING MAXIMUM TIME DELAY FOR INTRUSION DETECTION AND REACTION.



3MM & 4MM WIRE PANELS

75MM X 12.7MM APERTURE

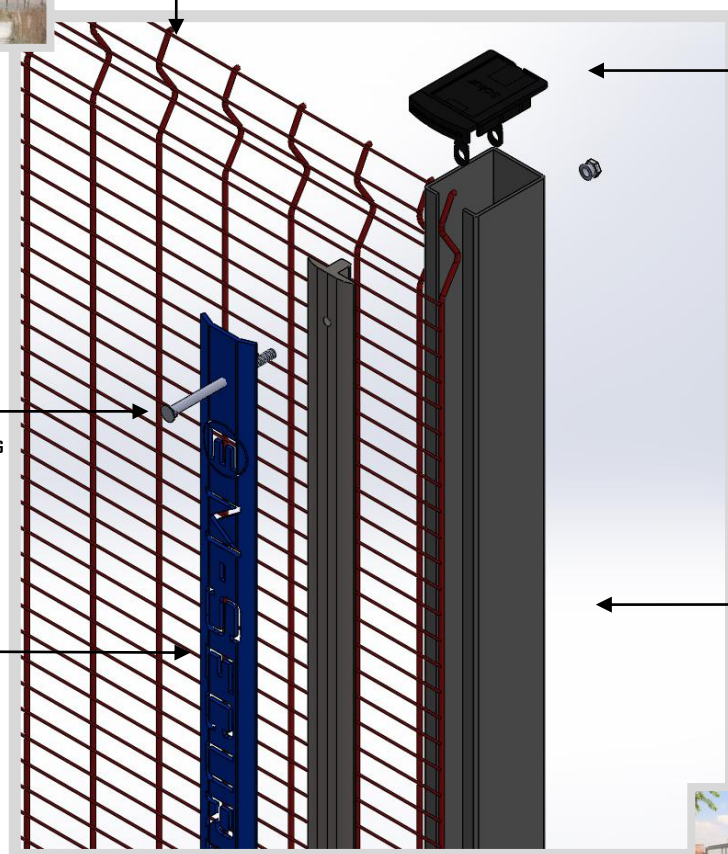
V-BENDS FOR RIGIDITY THROUGH OUT WIDTH OF PANEL WITH TOP AND BOTTOM BEND FOR SUPPORT

UV STABLE POLYPROPYLENE CAP WITH DUAL PURPOSE ARRANGEMENT

M8 NIB BOLT FOR FLUSH FINISH TO PREVENT TAMPERING

CUSTOM MARKETING CUT OUT OPTION

80MM X 60MM X 3MM OR 2.5MM STRUCTURAL TUBE SECTION



60MM X 4MM CONCAVE STEEL COVER CLAMP

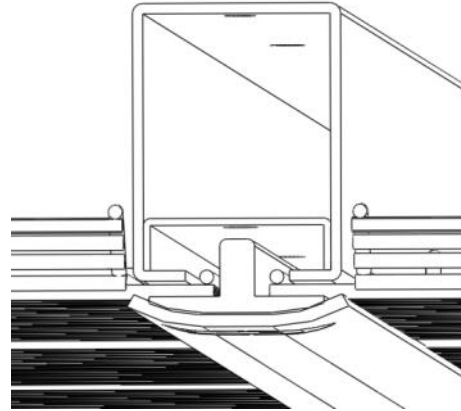
POLYPROPYLENE GASKET



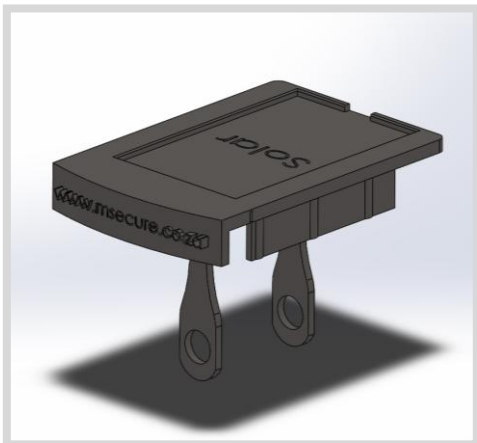
**THE CLAMPING SYSTEM**



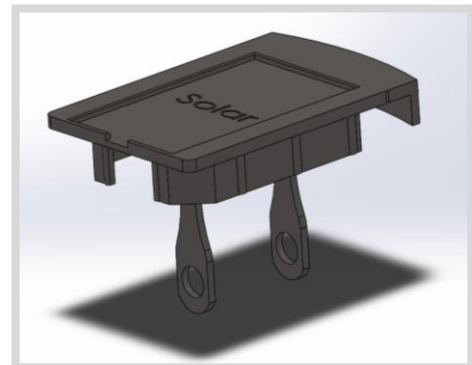
CLAMPING OF ALL LINE WIRES AND ADDITIONAL 4MM VERTICAL WIRE FOR A SECURE CONNECTION SPREAD ACROSS THE ENTIRE HEIGHT OF THE PANEL AND POST. THE HDPE GASKET ENSURES MAXIMUM GRIP ON THE PANEL IS MAINTAINED.



**THE CAP**



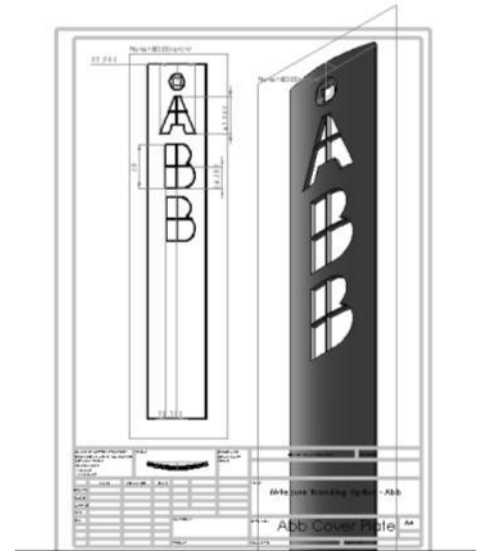
THE CAP IS MADE FROM A UV STABILISED POLYPROPYLENE WITH INTERNAL FIXING FEATURES TO ENSURE ONCE INSTALLED IT CAN NOT BE REMOVED. THE CAP CAN BE SPLIT IN TWO SHOULD THE CLAMP SYSTEM BE EXTENDED FOR AN ELECTRIC FENCING SYSTEM OR ANTI SCALING OPTIONS. THE CAP CAN ALSO HOUSE A SOLAR PANEL FOR THE MARKETING CUT OUT ON THE COVER CLAMP. PLEASE SEE BELOW FOR MORE DETAILS.





## THE COVER CLAMP

THE COVER CLAMP IS MANUFACTURED FROM A CONCAVE 60MM X 4MM FLAT SECTION FOR SUPERIOR CLAMPING PERFORMANCE. THE COVER CLAMP MAY BE ORDERED TO ANY SPECIFIC COLOUR WITH YOUR COMPANY NAME OR LOGO LASER CUT INTO IT FOR ACCESS AREAS. THE PLASTIC GASKET ALSO COMES IN A VARIETY OF COLOURS TO HIGHLIGHT THE BRANDED CUT OUT.



WE ALSO SUPPLY SOLAR POWERED ILLUMINATION OPTIONS OF HIGHLIGHTING THE CUT-OUT AT NIGHT



## THE GASKET



THE POLYPROPYLENE GASKET HAS BEEN MOULDED TO ENHANCE THE CLAMPING EFFICACY OF THE CLAMPING SYSTEM. THE GASKET IS ACID RESISTANT, UV STABLE, HEAT RESISTANT DUE TO THE COMPOSITE MATERIAL BEING USED, IT IS ALSO EXTREMELY HARD TO BREAK WITH HAMMERING OR CRUSHING ACTION.

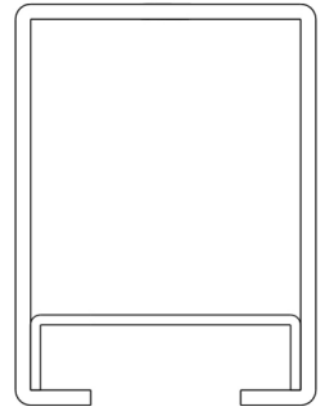
THE GASKET IS AVAILABLE IN MULTIPLE COLOURS TO ENHANCE THE BRANDING OPTIONS ON THE COVER CLAMPS WITH THE LIGHTING ENHANCEMENTS.



## THE POST



THE STRUCTURAL POST IS 80MM DEEP, 60MM WIDE AND AVAILABLE IN 2.5MM OR 3MM THICK MILD STEEL. BRACED WITH AN OPTIONAL INTERNAL BRACE TO CREATE A STRONG AND STURDY UPRIGHT ELEMENT TO ENSURE MAXIMUM STRENGTH AND RIGIDITY. THIS FORMS A STOUT FRONT SECTION FOR THE PANEL TO BE PINNED IN AGAINST THE GASKET AND THE COVER CLAMP. ALL ELEMENTS OF THIS SYSTEM ARE PREDRILLED AS NOT TO BREACH ANY OF THE CORROSION PROTECTION APPLIED AFTER MANUFACTURING. THE POST ALSO HAS PREDRILLED HOLES FOR THE M-SECURE ELECTRIC FENCE BRACKET.

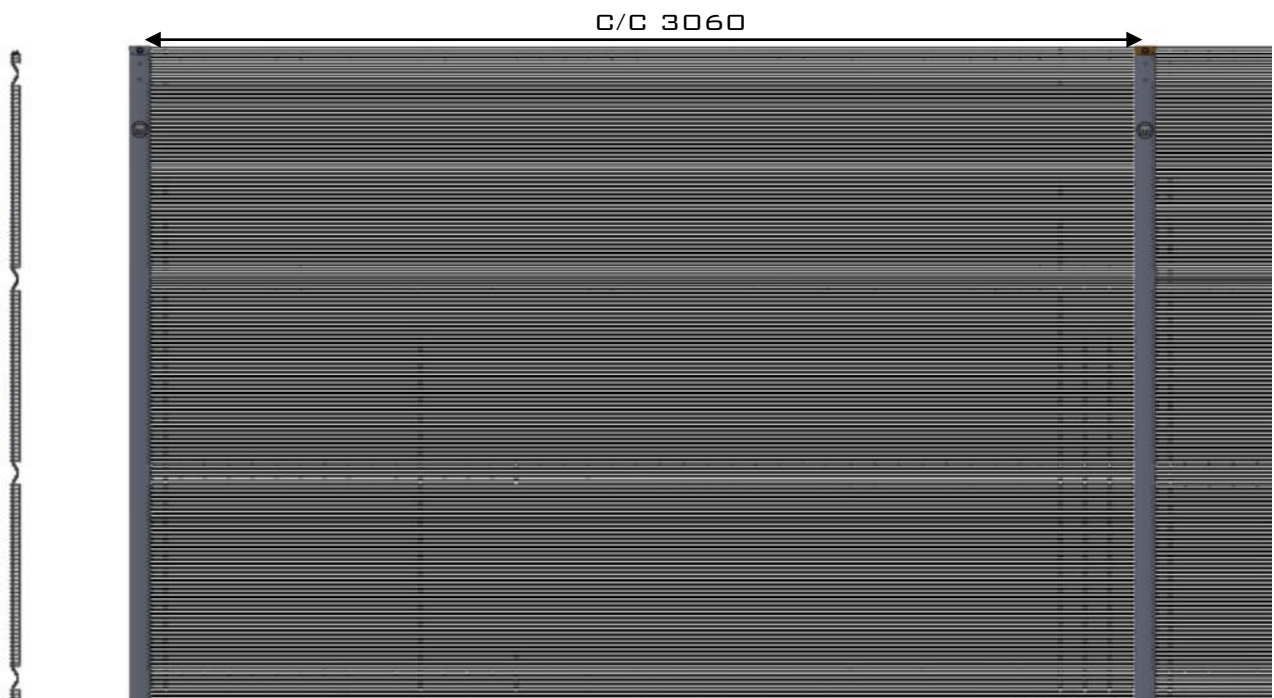


THE POST CONFIGURATION ALLOWS FOR MANY ANTI SCALING SYSTEMS. STANDARD OPTIONS INCLUDE WALL TOP ELECTRIC FENCING, FLAT WRAP OR COIL RAZOR PRODUCTS AND AN ESKOM SPECIFICATION WALL SPIKE.

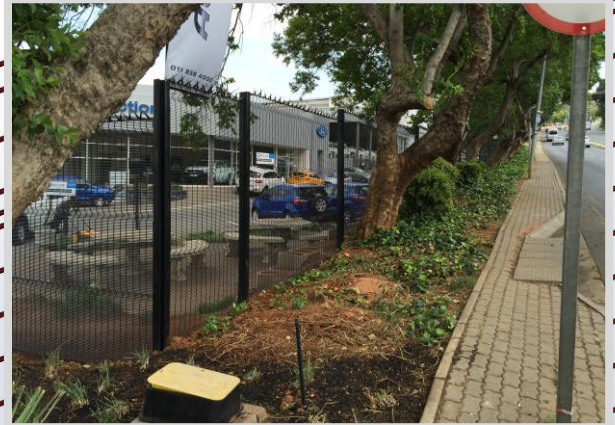
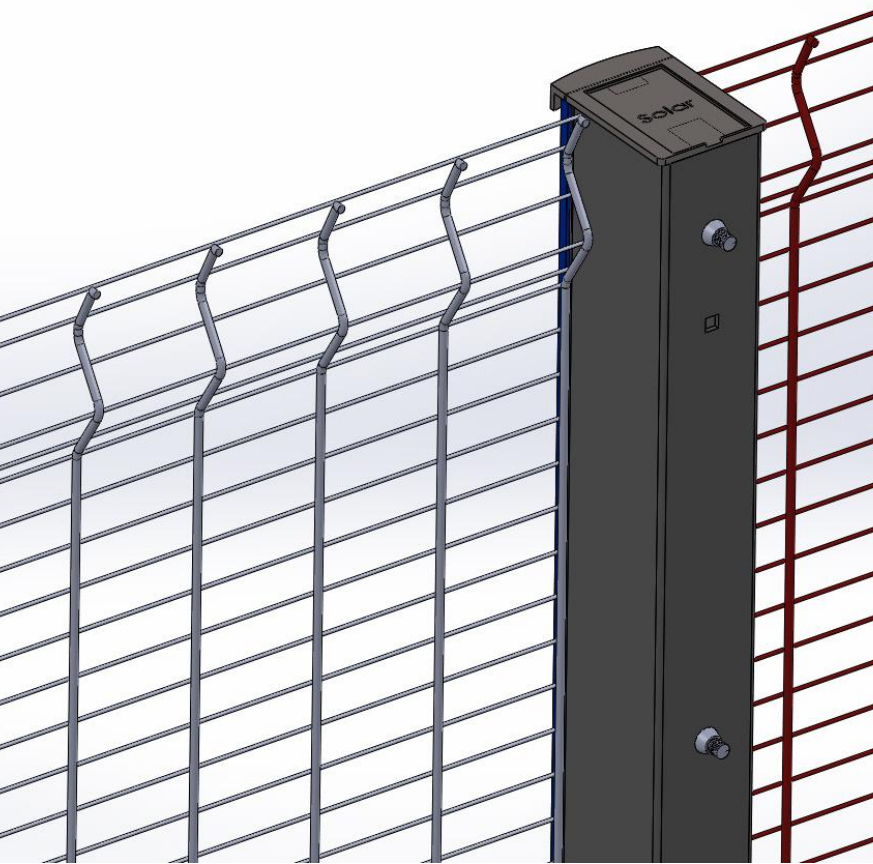
THE PANEL NESTS SECURELY BEHIND THE GASKET AND STEEL COVER CLAMP TO FORM A UNIFORM CLAMPING SURFACE. THE PANEL HAS MULTIPLE V-BENDS WITH 2 STIFFENER BENDS AT THE TOP AND THE BOTTOM

THE FOLLOWING STANDARD SYSTEM HEIGHTS ARE AVAILABLE.

1200MM	1800MM
2000MM	2400MM
3000MM	



BACK VIEW / INSIDE VIEW OF SYSTEM



**THE BOLTS AND NUTS**

THE FIXING SYSTEM HAS BEEN OPTIMISED TO ENSURE NO RISK FROM THE OUT SIDE OF THE PERIMETER FENCING LINE WHILE KEEPING A MINIMALISTIC APPEARANCE FROM THE INSIDE



FLUSH HEAD FOR  
INVISIBLE FIXING  
THROUGH THE STEEL  
CLAMP PLATE

M8 HOT DIPPED  
GALVANISED BOLT WITH  
TORQUE SECURITY  
SHEER NUT



**COATINGS**

THE PANELS ARE AVAILABLE IN A GALVAN COATING WITH SELF HEALING PROPERTIES. HEAVY GALVANISED PANELS ARE AVAILABLE

ON REQUEST.

THE POSTS ARE AVAILABLE - HOT DIPPED GALVANISED.

ALL BOLTS, NUTS AND WASHERS ARE HOT DIPPED GALVANISED.



ALL MATERIAL CAN BE POWDER OR THERMAL PLASTIC COATED TO MOST COLOUR REQUIREMENTS.




# PPA571

How long does your coating last?  
PPA571 will outlast them all.

The Plascoat® PPA571 series is one of the most versatile coatings available on the market today, able to provide superior resistance to environmental exposure, wear and tear, damage, and malicious attack with no effect to its performance and low maintenance requirements.

- Extremely long life
- Corrosion resistance in hostile environments
- Aesthetic longevity
- Low toxicity
- Low Fume toxicity
- Warm to the touch
- Low fungal growth
- No primer required
- Graffiti resistant – easily removed with no staining
- Water & food contact approvals

Extensive Plascoat lab tests & real world use indicate working life of over 70 years.

Swedish Corrosion Institute tests show underground life of PPA571 of over 200 years.

**SGS**

Global leader in inspection, testing and certification. SGS certify that PPA571 will last:

- 10 years in normal conditions
- 5 years in heavy industrial & marine environments.

**Advantages over Epoxy:**

- Flexibility
- No curing required
- Significantly higher UV resistance

**Advantages over Nylon coatings:**

- Very low water absorption
- Cost effective
- No primer required

**Advantages over PVC coatings:**

- Very low toxicity
- No plasticizers, chlorine & halogens
- Low temperature performance to -70°C
- Does not shrink or become brittle in hot weather

**Advantages over Polyester:**

- No curing required
- Lasts longer in harsh environments

The Plascoat® PPA571 series is available in fluidised bed dip, electrostatic spray, flock spray and extrusion grades.

Contact us for more information:

**Plascoat Systems Ltd**  
T: +44 (0)1252 733777  
F: +44 (0)1252 733233  
E: sales@plascoat.com

**Plascoat Europe BV**  
T: +31 (0)181 458888  
F: +31 (0)181 458877  
E: salespce@plascoat.nl

**Plascoat Corp**  
T: +01 800 489 7236  
F: +01 216 520 1273  
E: sales@punda.com

www.plascoat.com



# PPA571

## Stock Colours

Plascoat® PPA571 is available in these listed stock colours. A comprehensive colour matching service is available for larger orders. Please contact us for further details.



Our colour range is listed in Plascoat 3-digit codes, and RAL 4-digit identification.



Beige 222 | RAL 1015



Red 233 | RAL 3020



Yellow 344 | RAL 1021



Green 475 | RAL 6005



Blue 536



Blue 542 | RAL 5015



Grey 613 | RAL 7035



Grey 654 | RAL 7001



Grey 695



Grey 640 | RAL 7016



Brown 813 | RAL 3009



Brown 838



Black 700 | RAL 9005



White 110 | RAL 9016



Silver | RAL 9006

**Please note:**

Whilst every effort is made to ensure the colours on this page are as accurate as possible, due to printing & on-screen limitations this card should be used as guidance only. Colours reflect coated finish, and matched to nearest RAL value where appropriate. Samples are available as coated plates or powder.



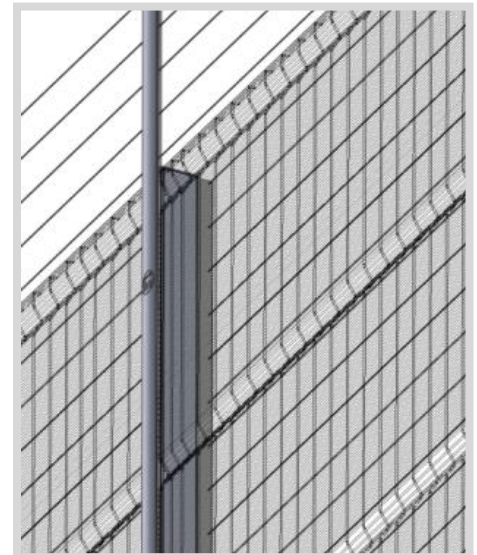
**ANTI SCALING TECHNOLOGIES**

The M-Secure system is the only system on the market today that was designed to accept “after market” additional security technologies such as electric fencing, vibration detection systems, anti-scaling options like razor strips, Razor flat wrap and Razor Coil including Shark tooth type strips.

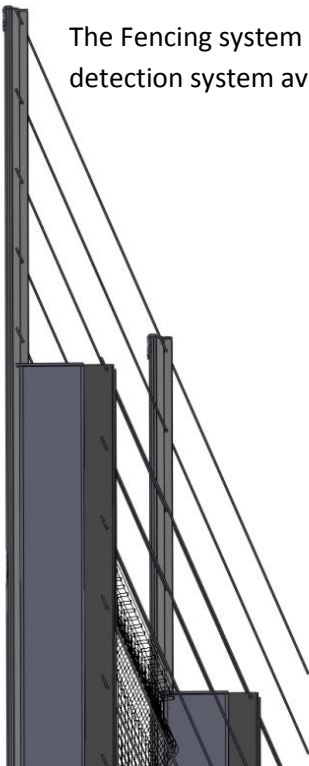


Extending our Cover plate with the HDPE Gasket creates a seamless transition to a wall top electric fencing system without the need to additionally fix any line brackets saving time and money

We offer a full length bracket should you wish to have a full length electric fence. This option is a pure bolt-on system and does not require.

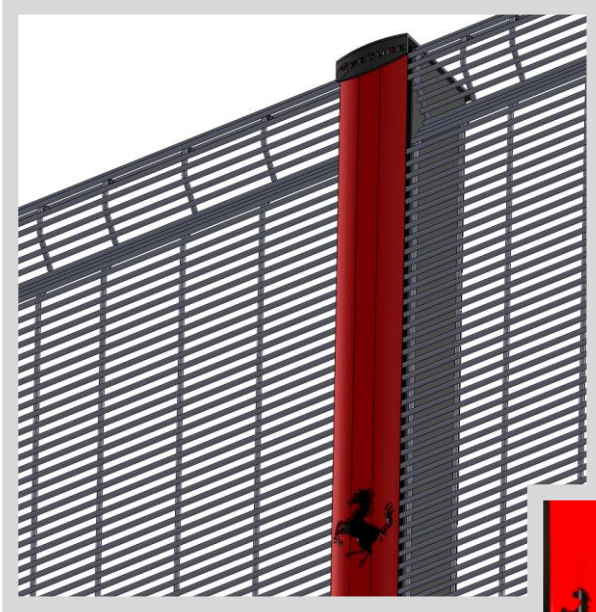


The Fencing system can accommodate the majority of vibrations detection system available on the market today.

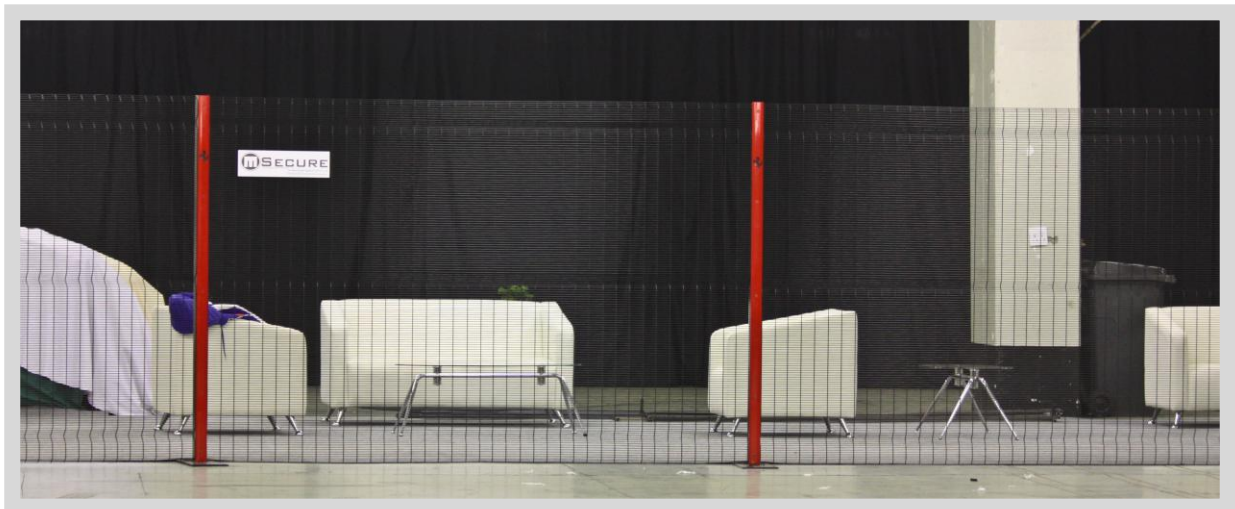




CONCEPT DRAWING  
PROPOSED TO CLIENT



ACTUAL FENCE



EXTERNAL VIEW OF M254



INTERNAL VIEW OF M254

