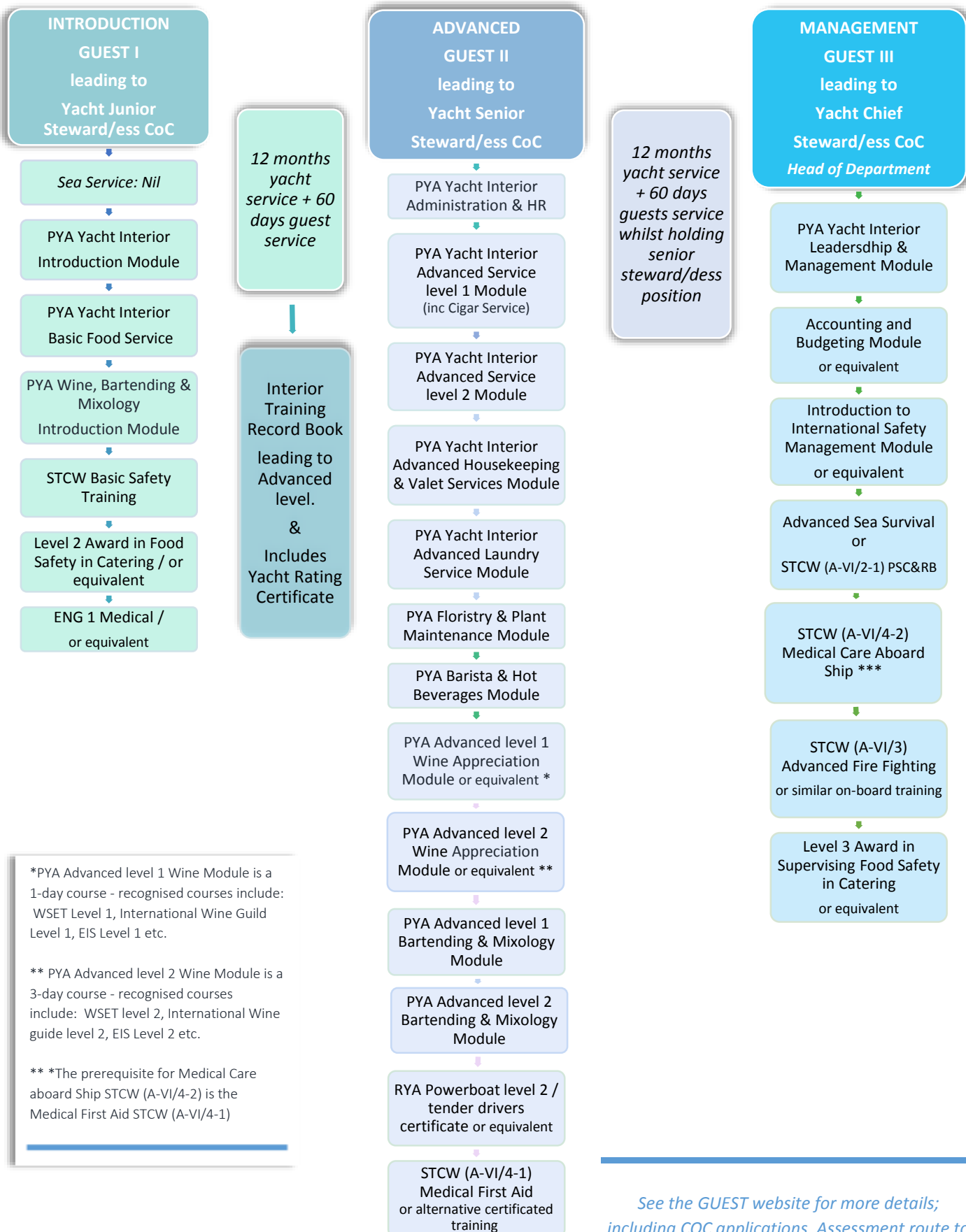


PYA GUEST© Interior Crew Training & Certification Development route 2016 REV 31



*PYA Advanced level 1 Wine Module is a 1-day course - recognised courses include: WSET Level 1, International Wine Guild Level 1, EIS Level 1 etc.

** PYA Advanced level 2 Wine Module is a 3-day course - recognised courses include: WSET level 2, International Wine guide level 2, EIS Level 2 etc.

** *The prerequisite for Medical Care aboard Ship STCW (A-VI/4-2) is the Medical First Aid STCW (A-VI/4-1)

See the GUEST website for more details; including COC applications, Assessment route to CoC and to download your Training Record Book.
www.guest-program.com

