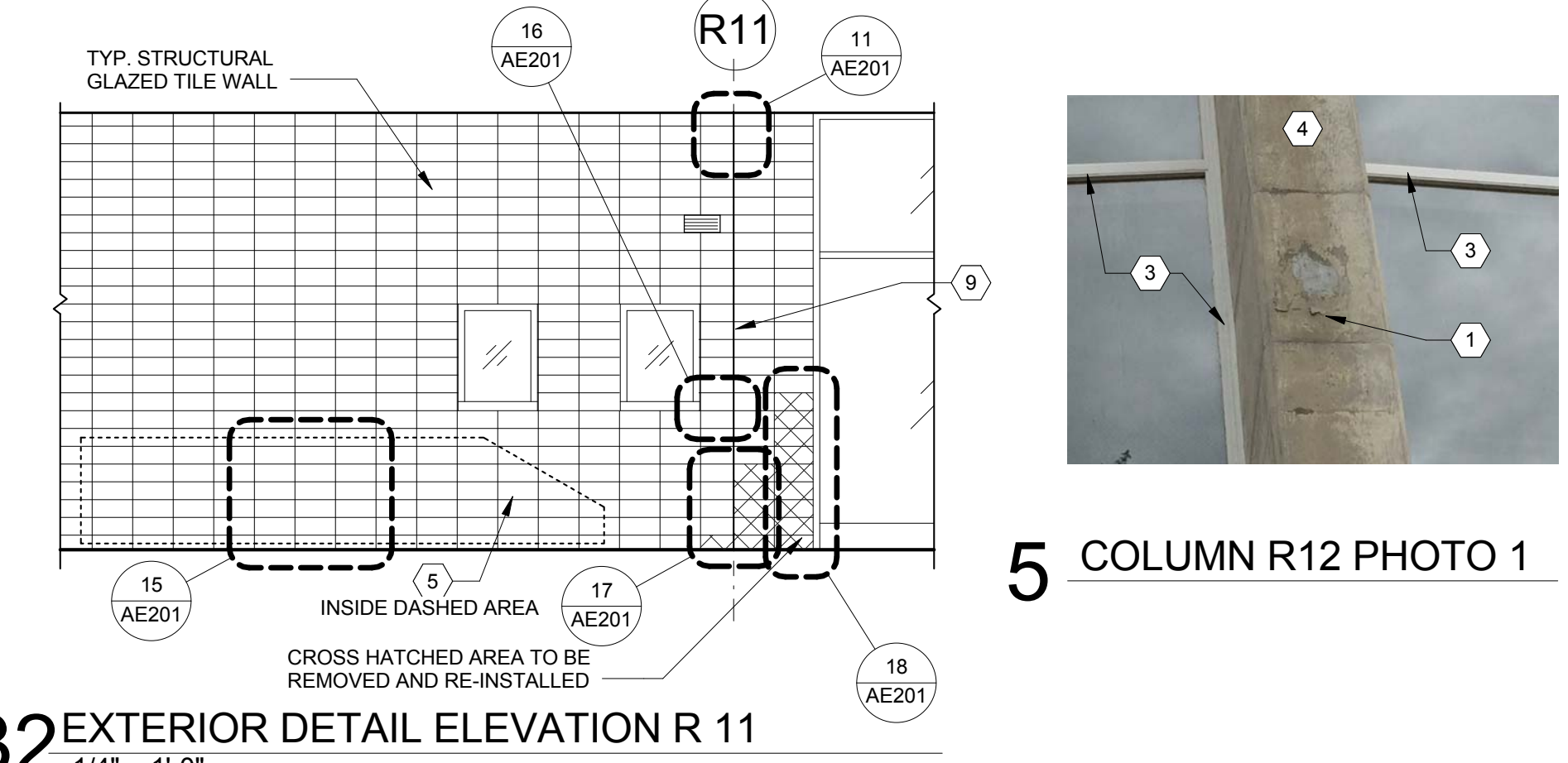
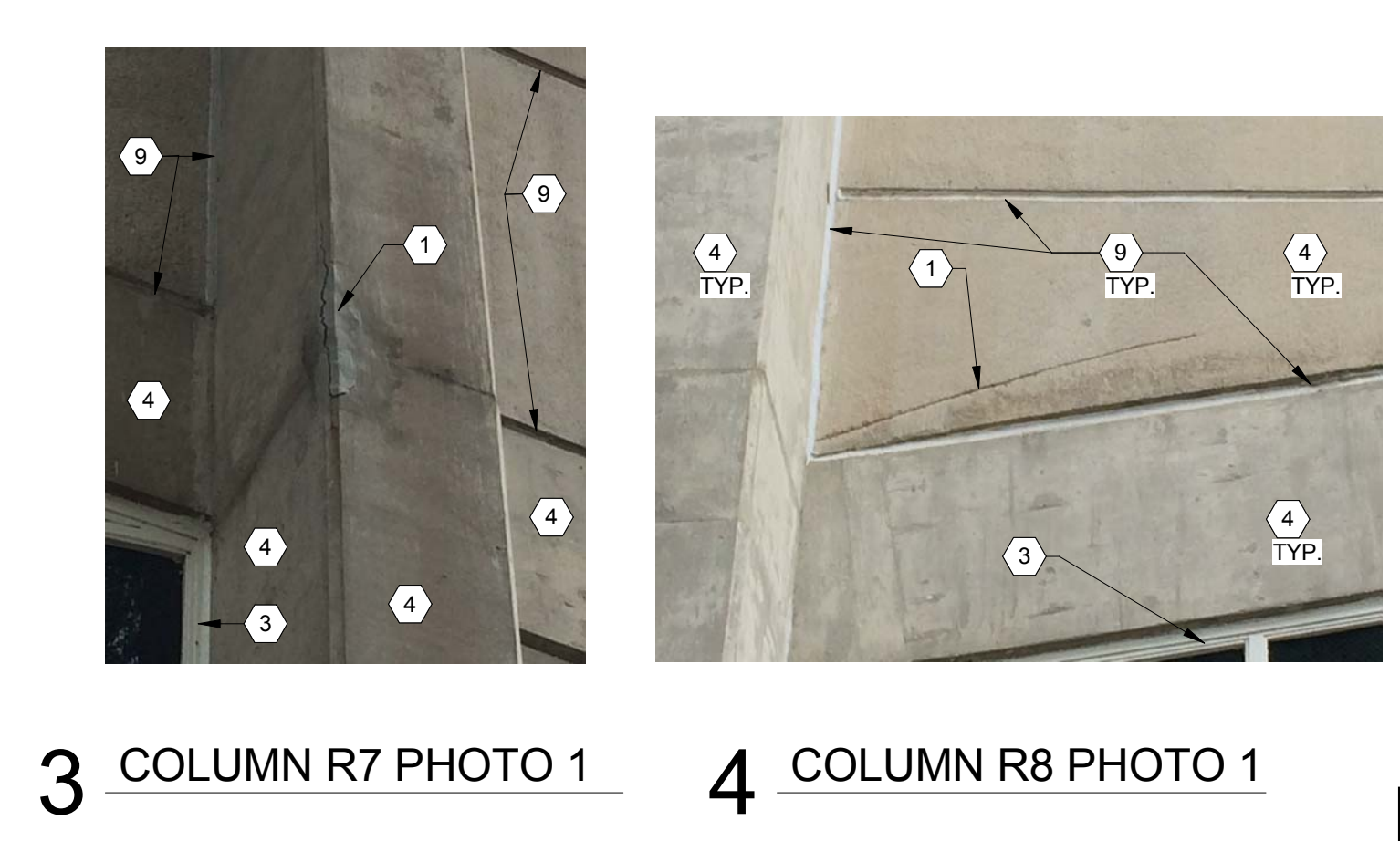
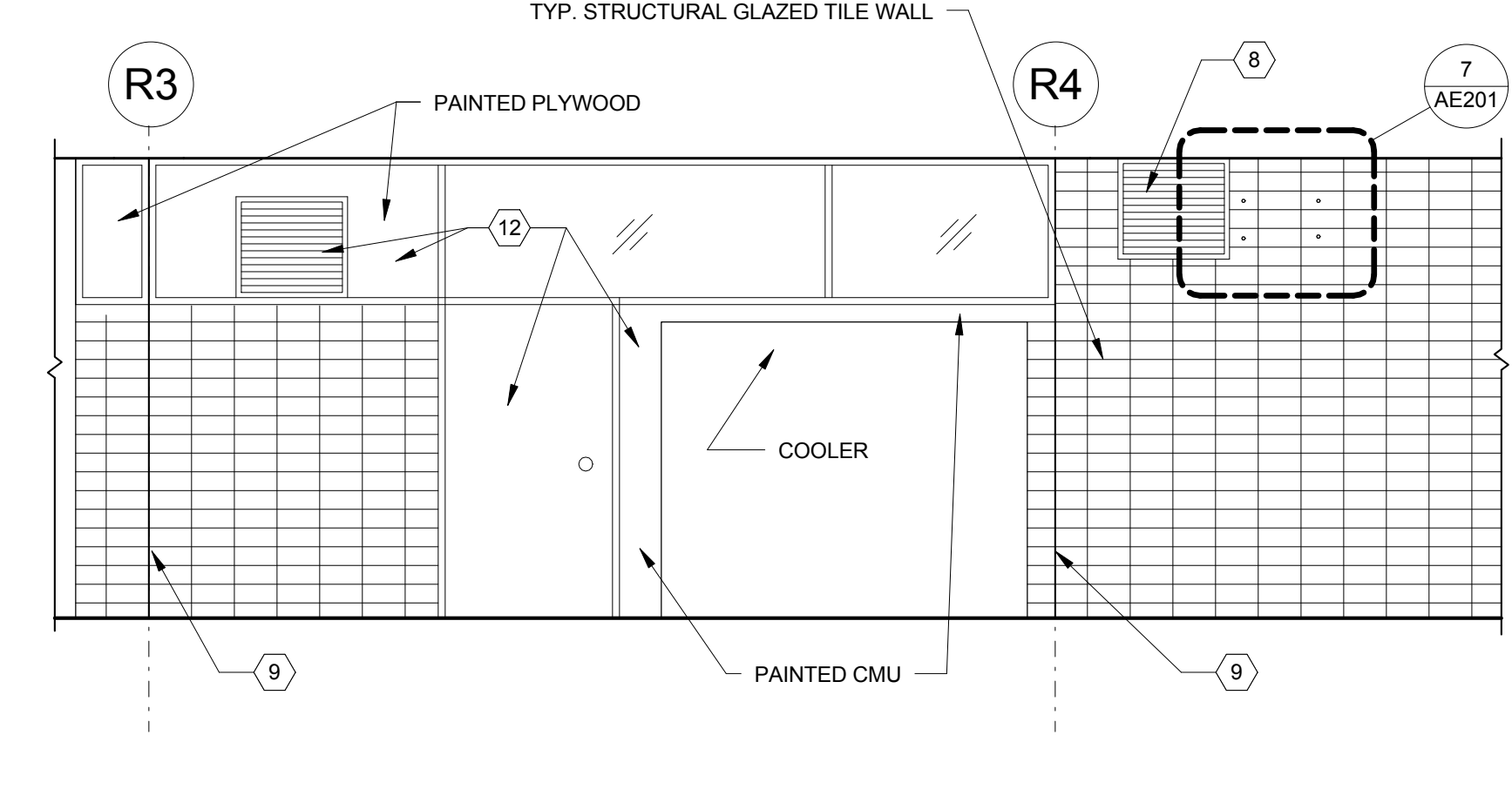
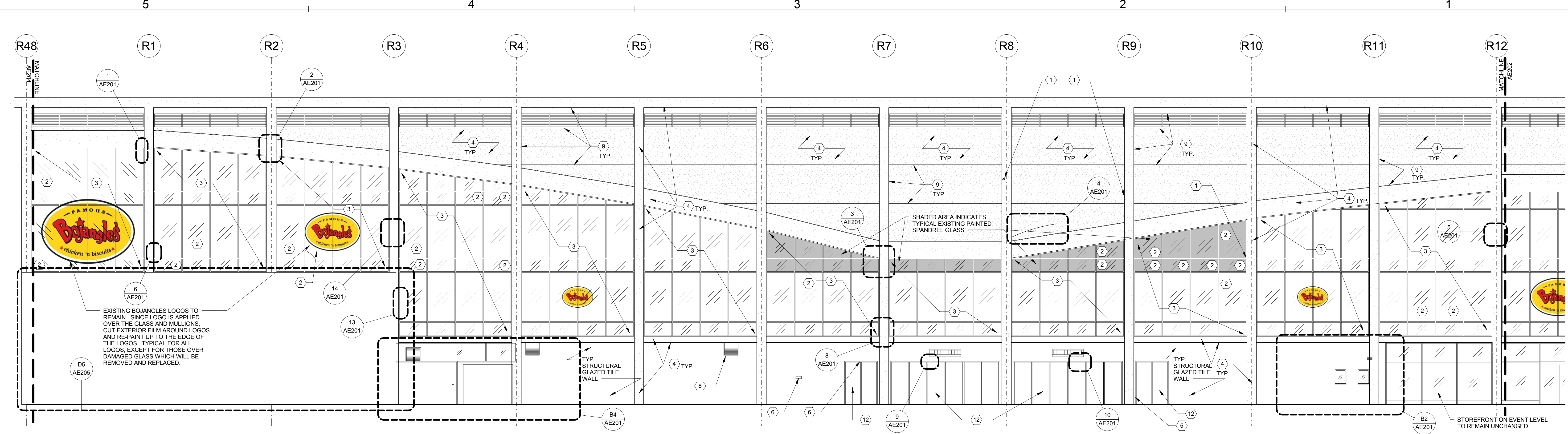


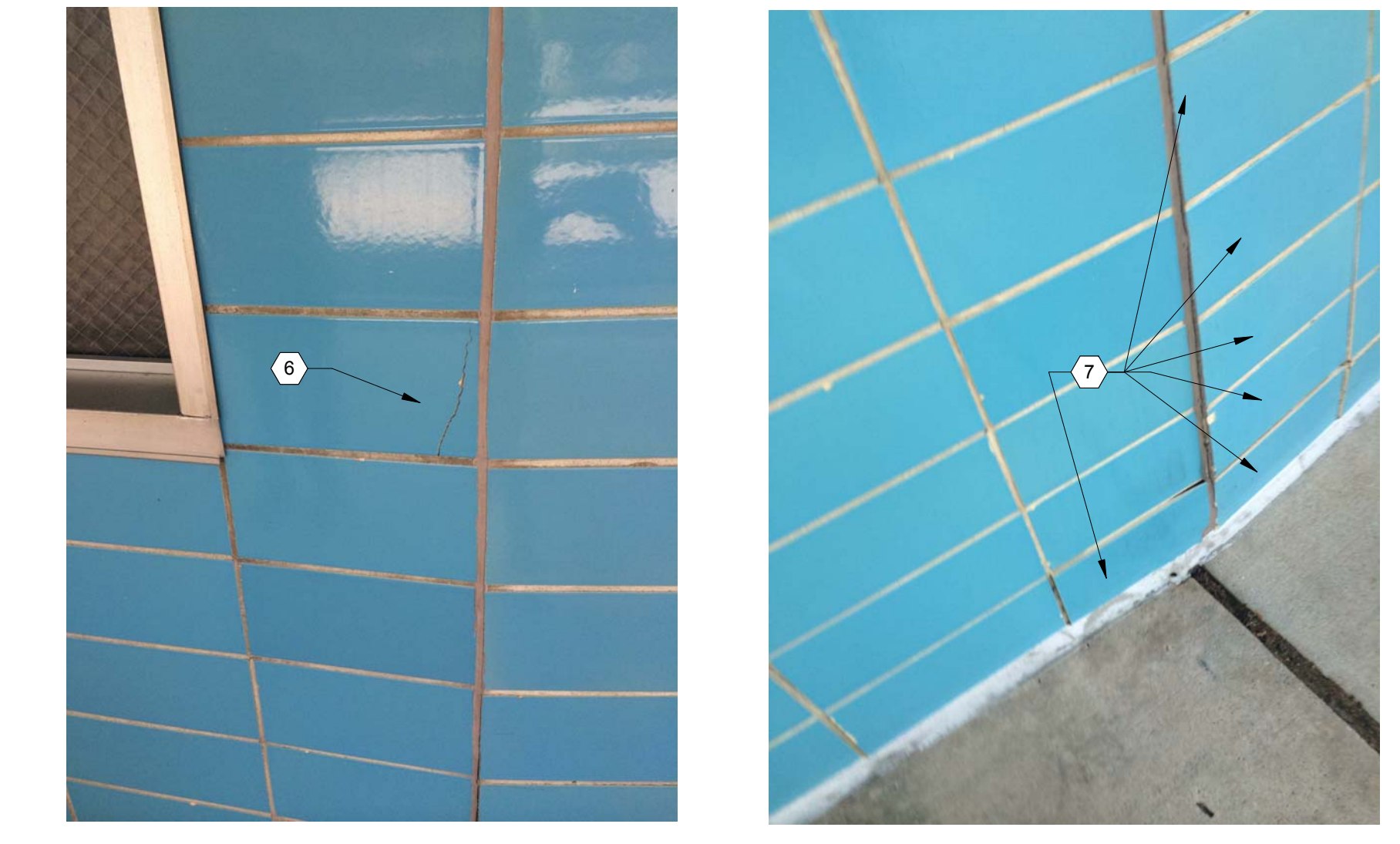
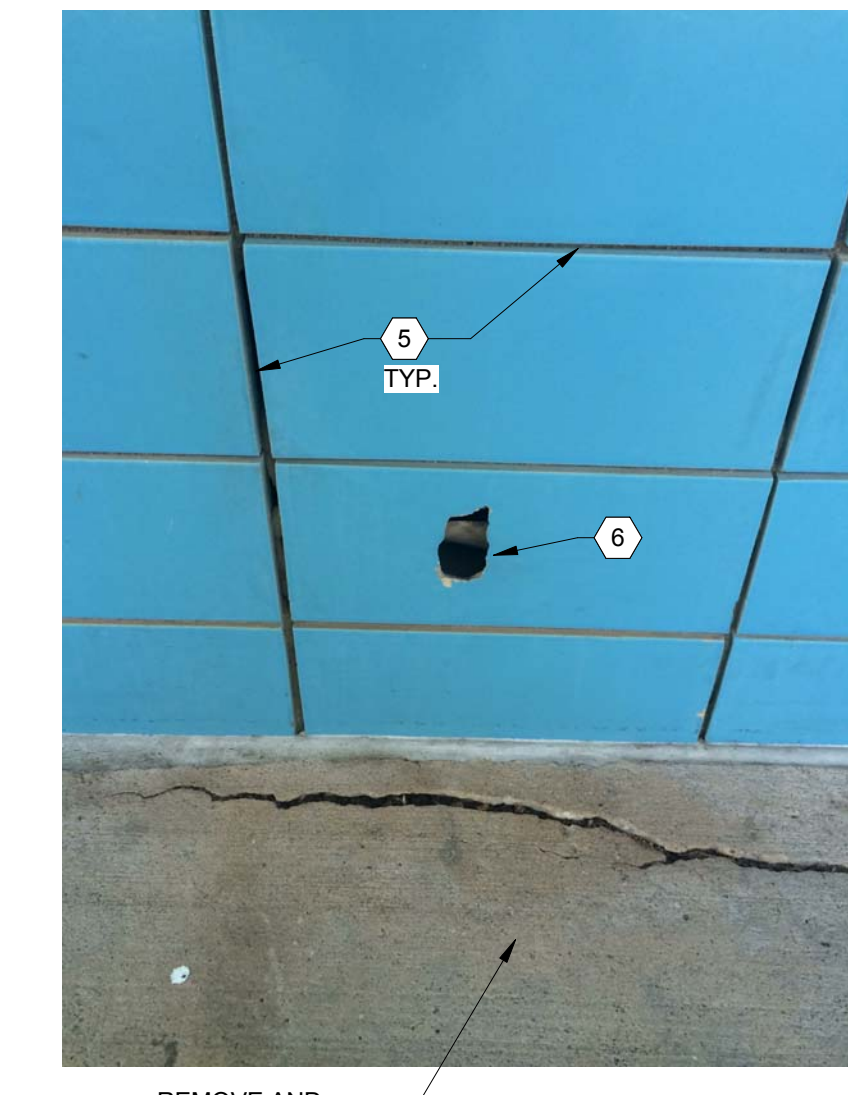
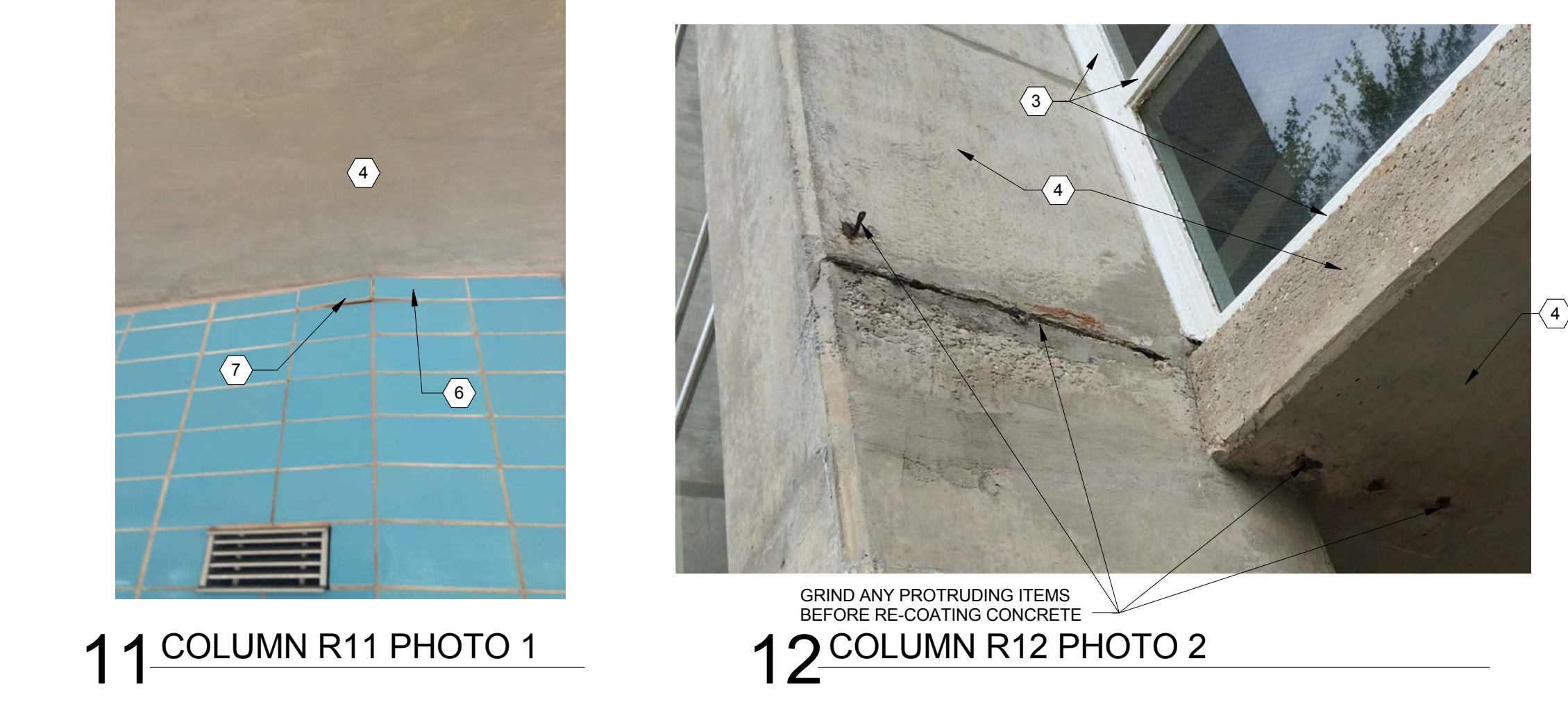
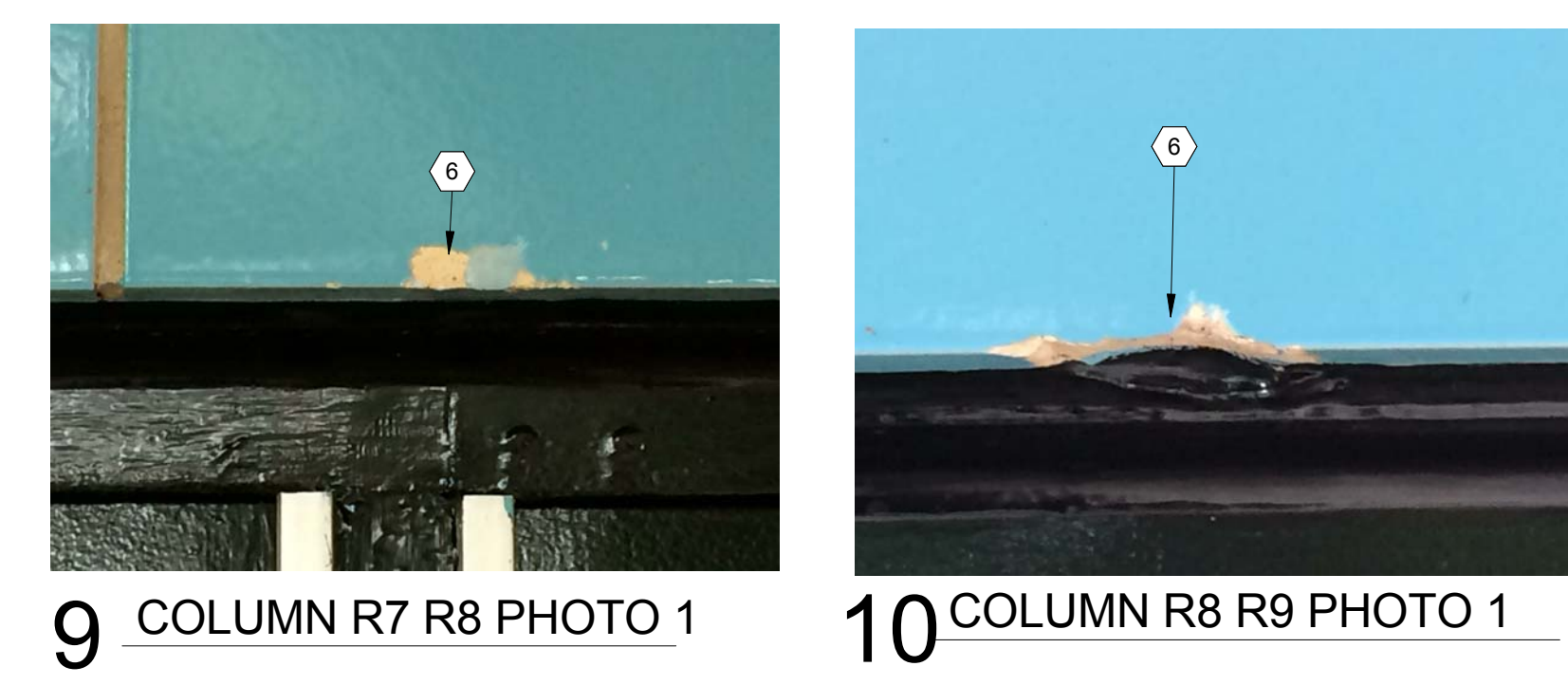
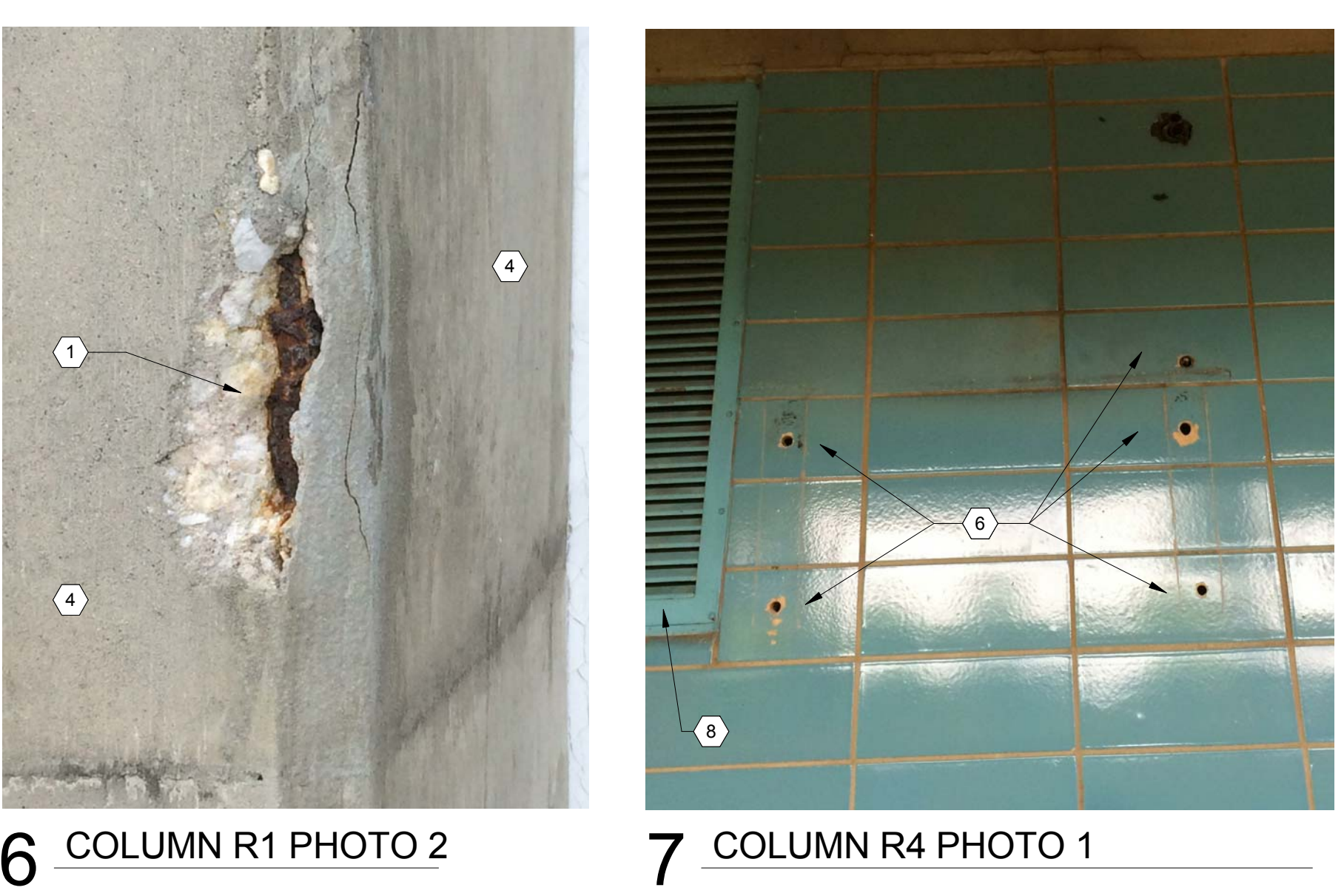
**Bojangles' Coliseum
Phase 2**

2700 EAST INDEPENDENCE
BOULEVARD CHARLOTTE, NC 28205

CITY OF CHARLOTTE

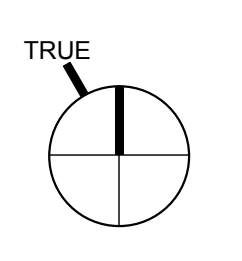


5 COLUMN R12 PHOTO 1



KEYNOTE LEGEND

NOTE	DESCRIPTION
1	REPAIR SPALLING CONCRETE
2	REPLACE DAMAGED GLASS PANES
3	TREAT RUST SPOTS AND REPAINT INTERIOR AND EXTERIOR CURTAIN WALL MULLIONS. REMOVE OLD FRAME EDGE AND GLAZED EDGE SEALANT AND RELACE WITH NEW.
4	POWER WASH ALL EXPOSED CONCRETE WALLS, COLUMNS, BEAMS AND PRECAST PANELS THEN RE-COAT WITH CEMENTITIOUS COATING.
5	RE-GROUT STRUCTURAL GLAZED TILE.
6	REMOVE AND REPLACE DAMAGED STRUCTURAL GLAZED TILE.
7	REMOVE AND RE-INSTALL STRUCTURAL GLAZED TILE.
8	RE-PAINT LOUVER, CONCRETE WALL.
9	REMOVE AND REPLACE SEALANT JOINT.
10	SECURE EXISTG TRIM AS NECESSARY
11	ALUMINUM STOREFRONT TO REMAIN
12	TOUCH UP EXISTING PAINTED SURFACE
13	NEW PLAZA GUARDRAIL PANELS
14	NEW PLAZA GUARDRAIL & HANDRAIL
15	NEW OVERHEAD COILING DOOR
16	NEW CONCRETE STAIR
17	NEW LOUVER
18	NOT USED



REVISION	DATE	DESCRIPTION
ADDENDA OR MODIFICATION		
CD	TBD	CONSTRUCTION DOCUMENTS
DD	TBD	DESIGN DEVELOPMENT
SD	TBD	SCHEMATIC DESIGN
ISSUE	DATE	DESCRIPTION
FULL SET ISSUES		

PROJECT NO: 3800-005
P.I.C. M. Woolfen
P.MGR. M. Woolfen
P.ARCH. G. Gupte
DESIGN BY B. Bartholomew
JOB CAPTAIN
DRAWN BY Author
CHECKED BY Checker

**EXTERIOR
ELEVATIONS
FLATTENED**

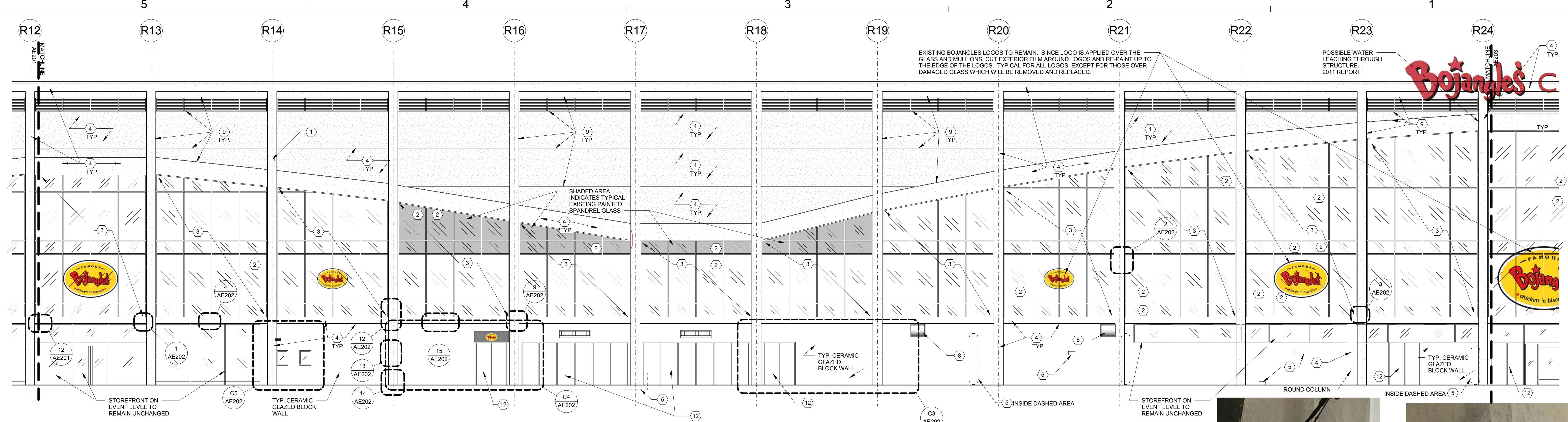
SHEET IDENTIFIER
AE201

3/23/2018 8:58:42 AM P:\3800-005_Bojangles_Coliseum_Restoration\03_080000_Bojangles_Coliseum_Restoration_Phase2.rvt

Bojangles' Coliseum
Phase 2

2700 EAST INDEPENDENCE
BOULEVARD CHARLOTTE, NC 28205

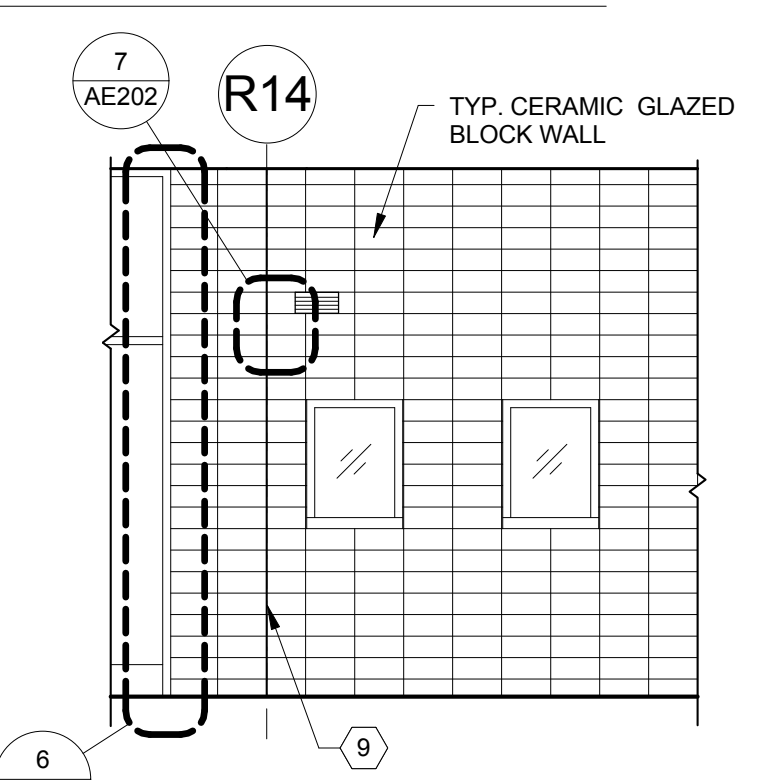
CITY OF CHARLOTTE



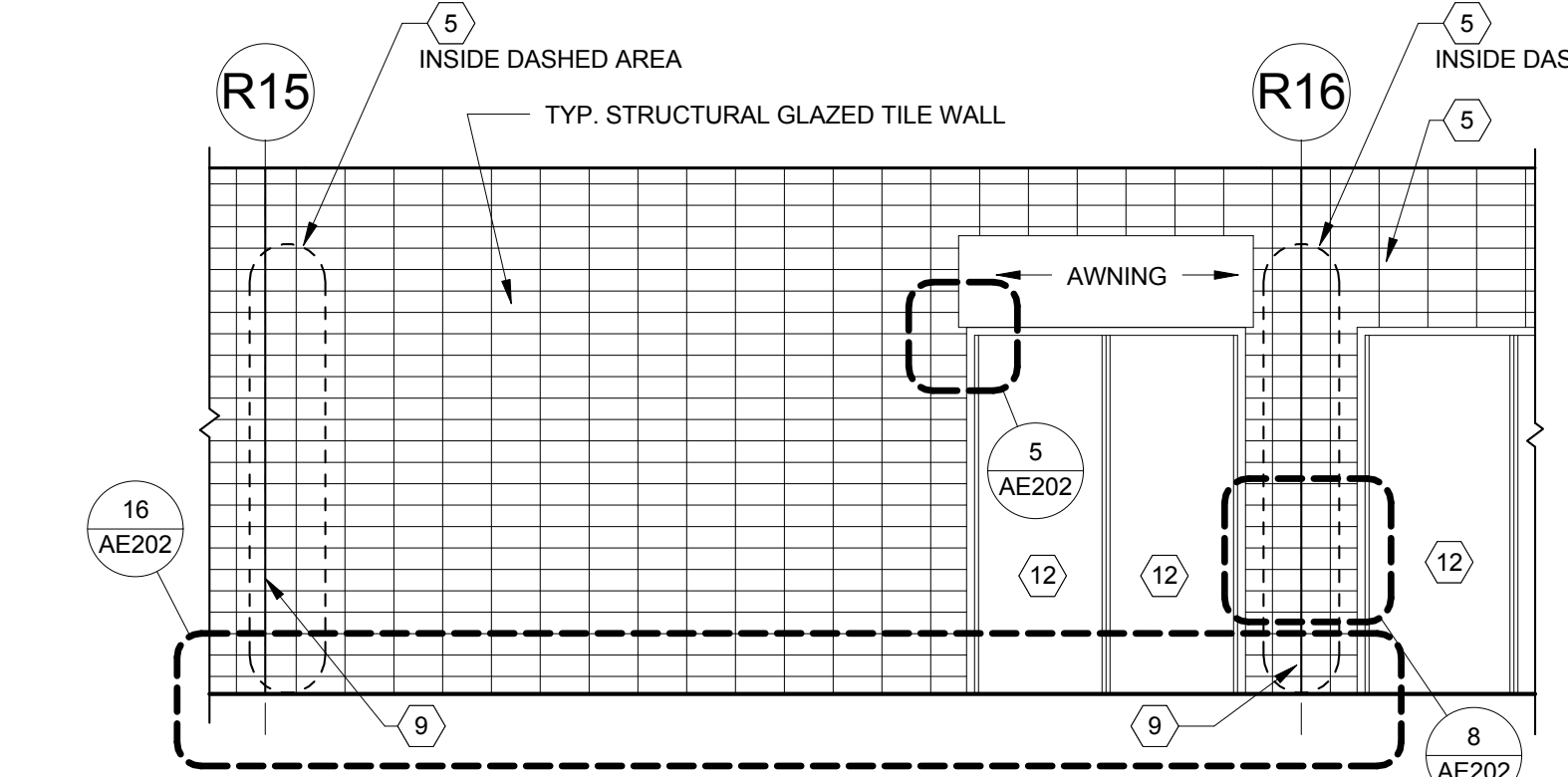
D5 EXTERIOR ENLARGED ELEVATION COLUMN LINES 13-24
1/8" = 1'-0"



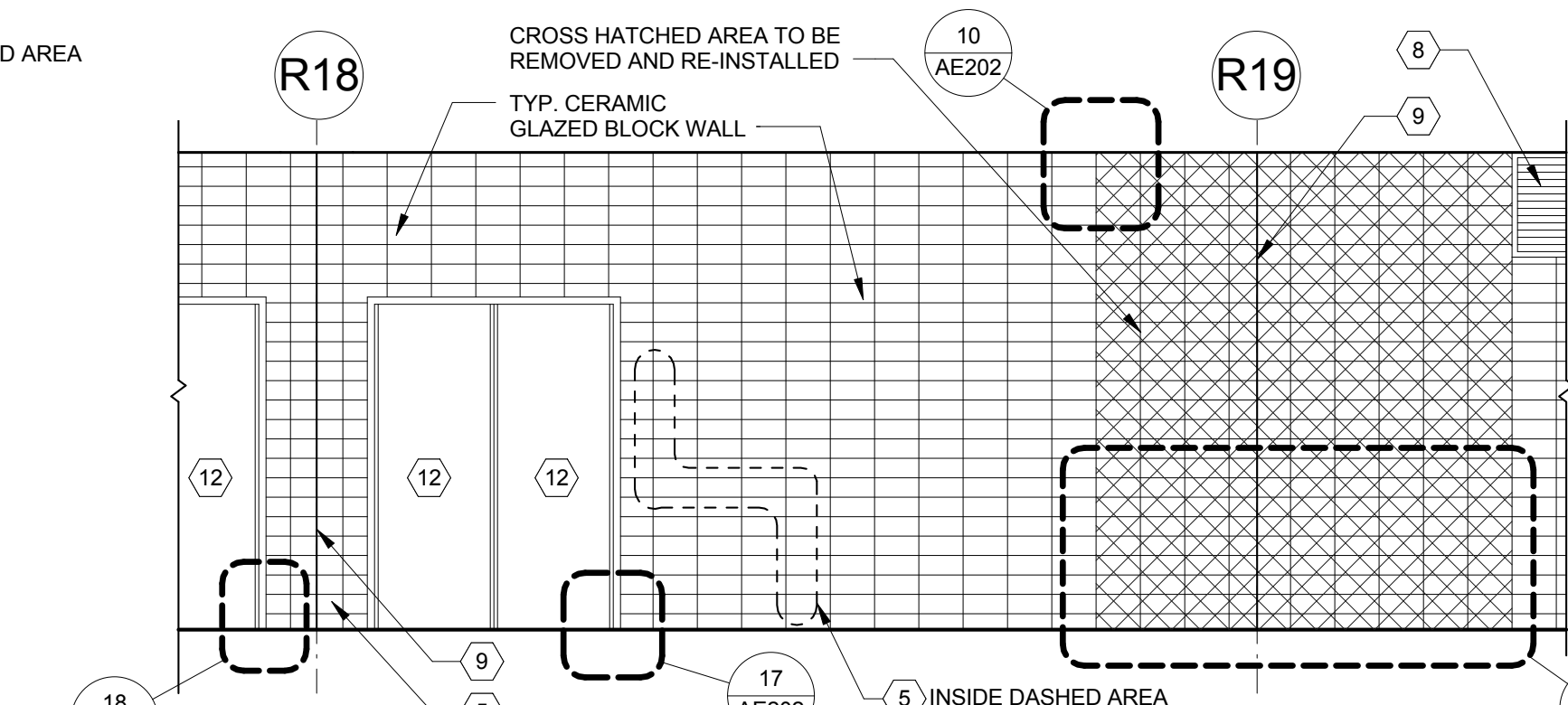
1 COLUMN R13 PHOTO 1



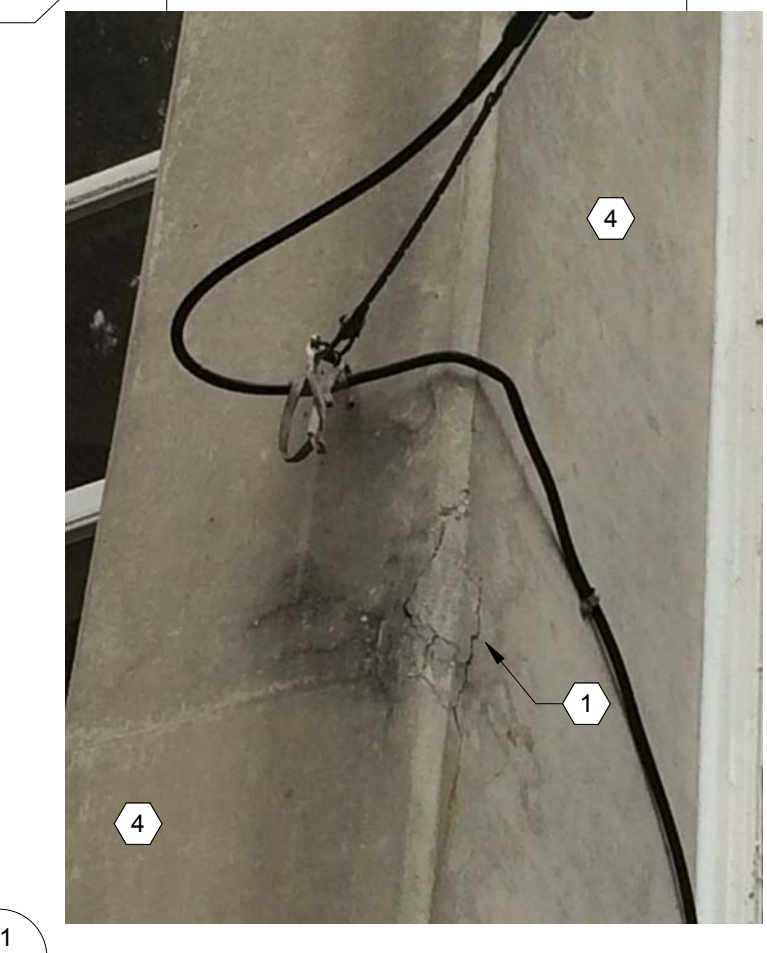
C5 EXTERIOR DETAIL ELEVATION R14
1/4" = 1'-0"



C4 EXTERIOR DETAIL ELEVATION R16
1/4" = 1'-0"



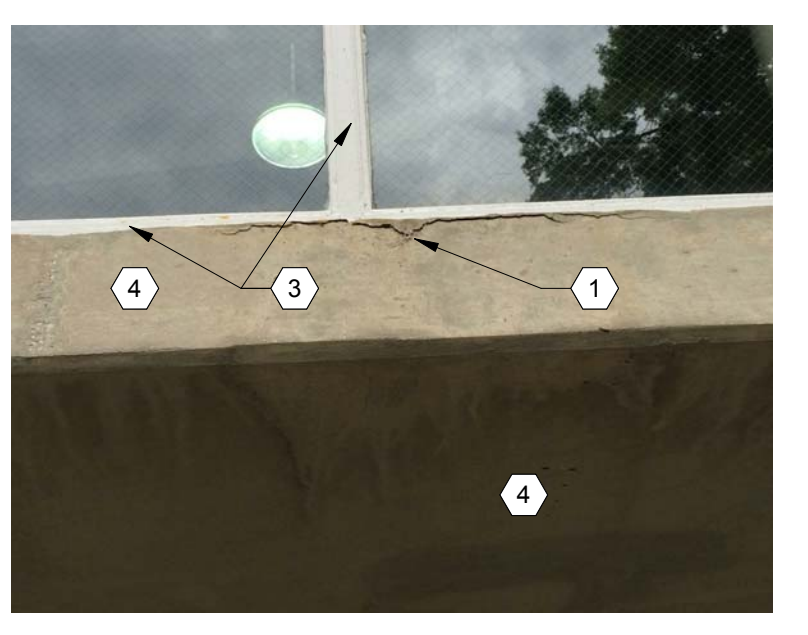
C3 EXTERIOR DETAIL ELEVATION R18-19
1/4" = 1'-0"



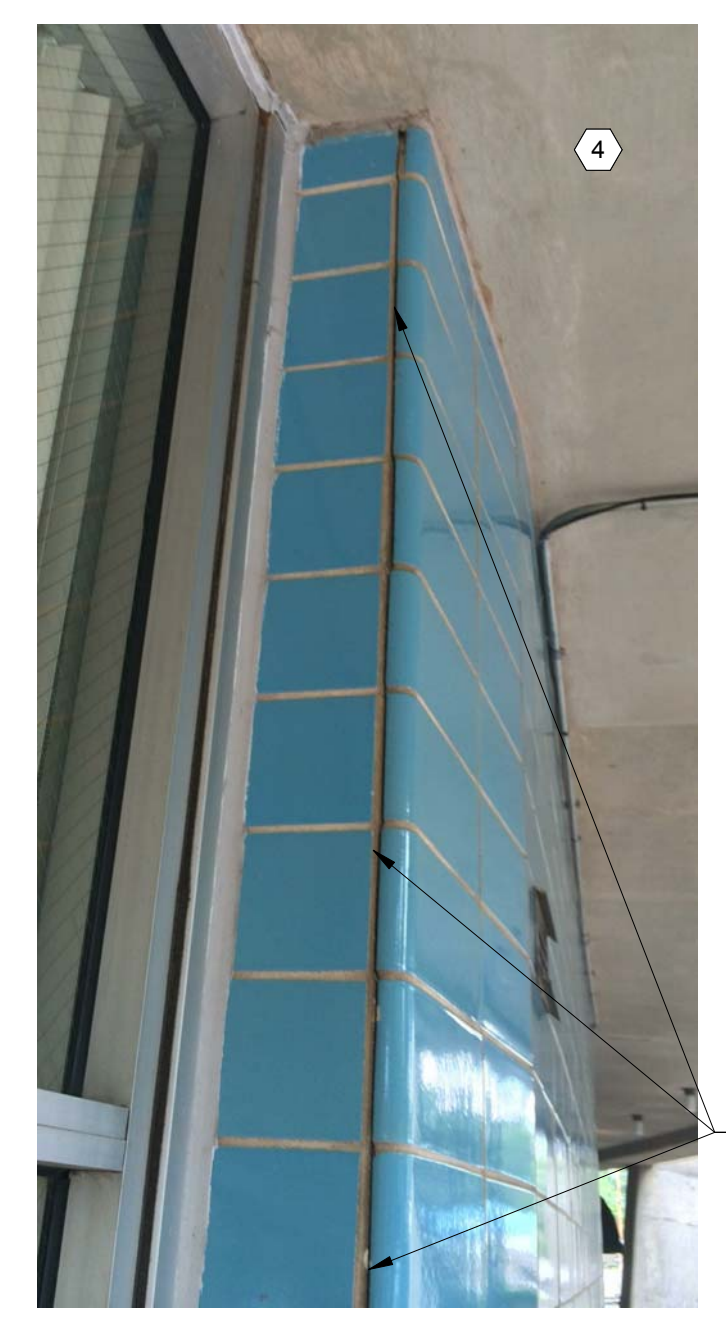
2 COLUMN R21 PHOTO 1



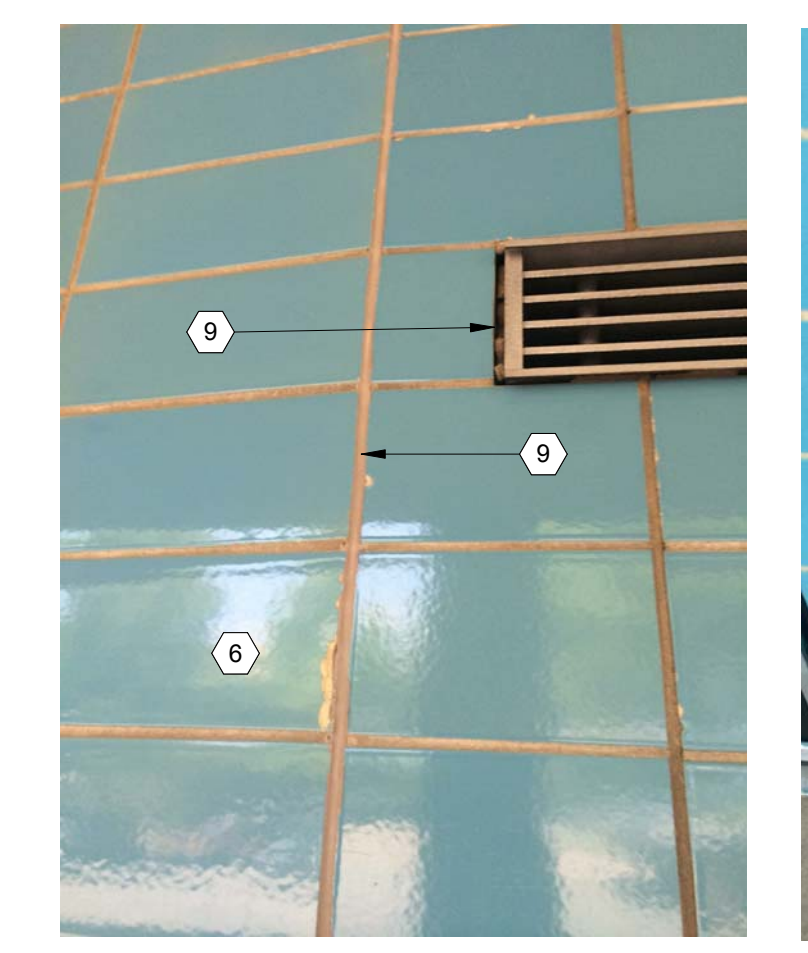
3 COLUMN R23 PHOTO 1



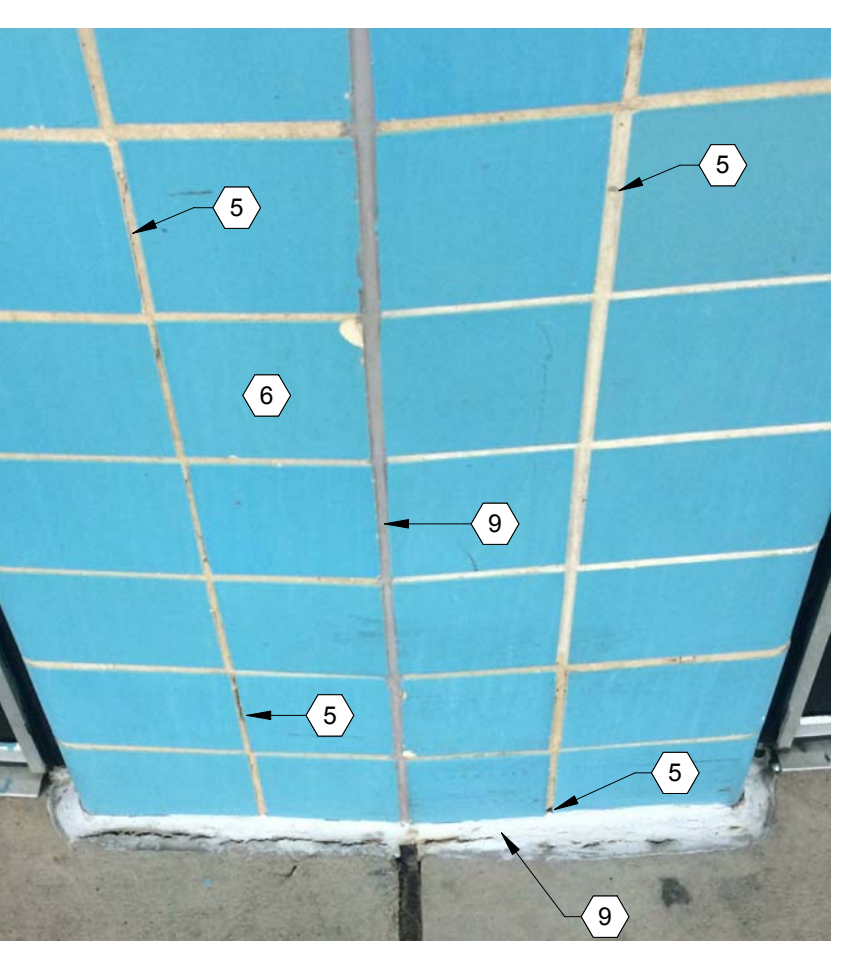
4 COLUMN R13 R14 PHOTO 1



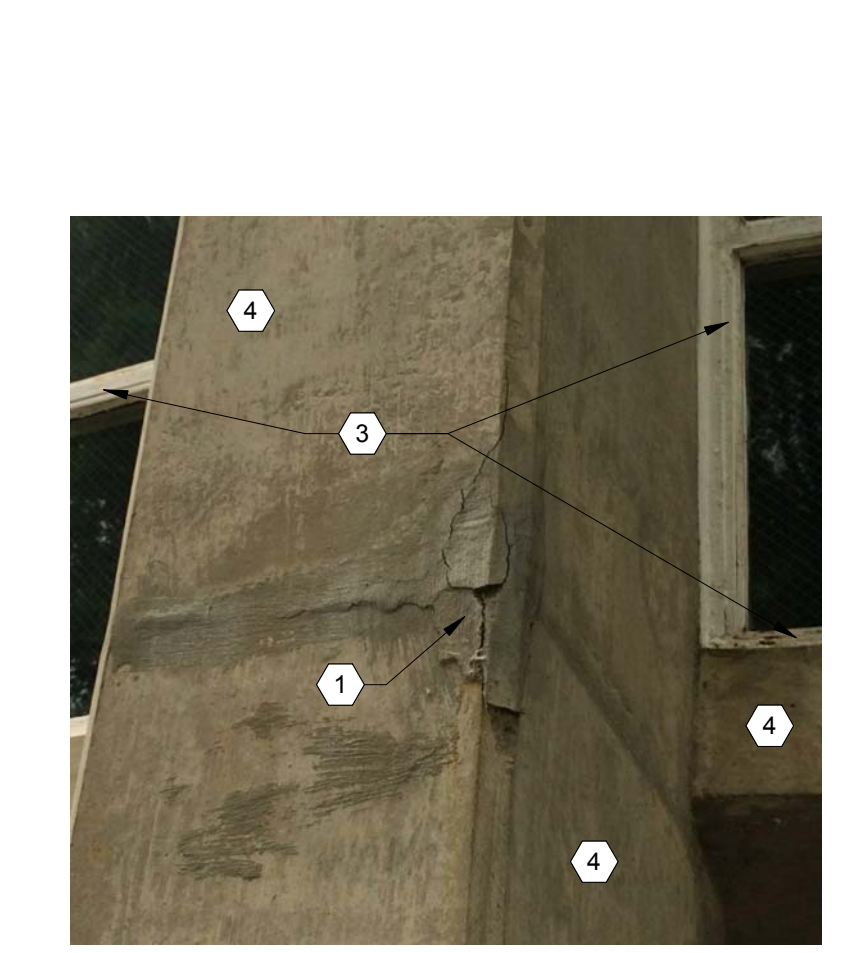
6 COLUMN R14 PHOTO 3
1/4" = 1'-0"



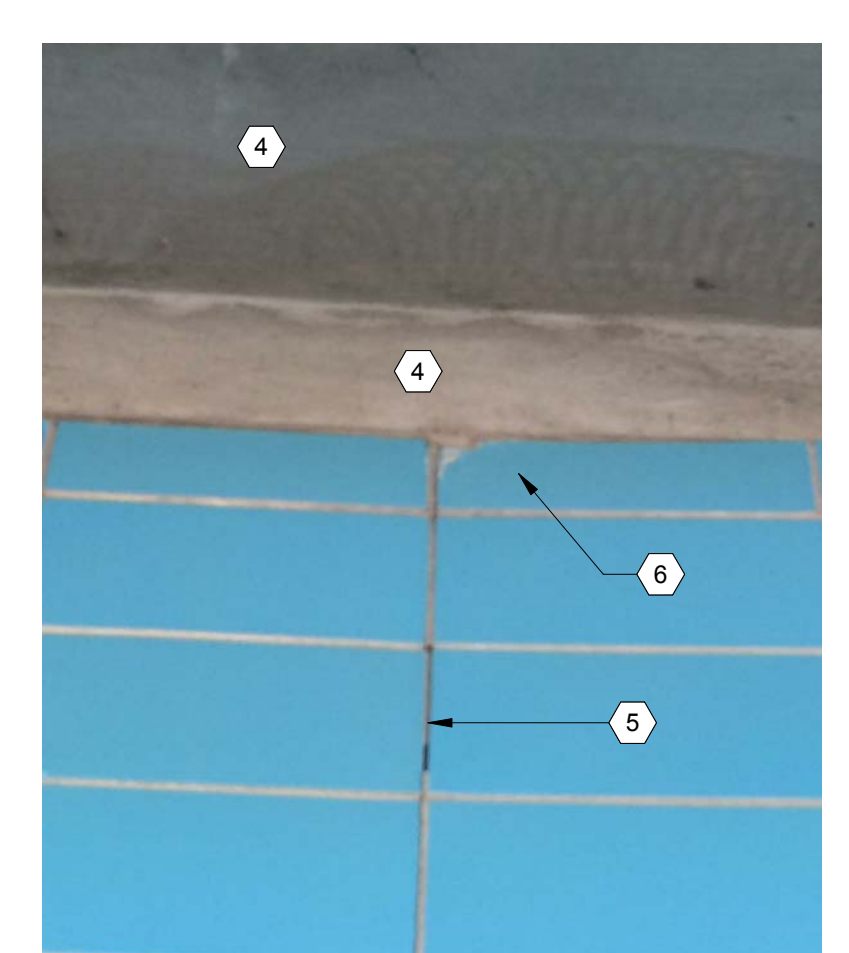
7 COLUMN R14 PHOTO 1



8 COLUMN R16 PHOTO 1



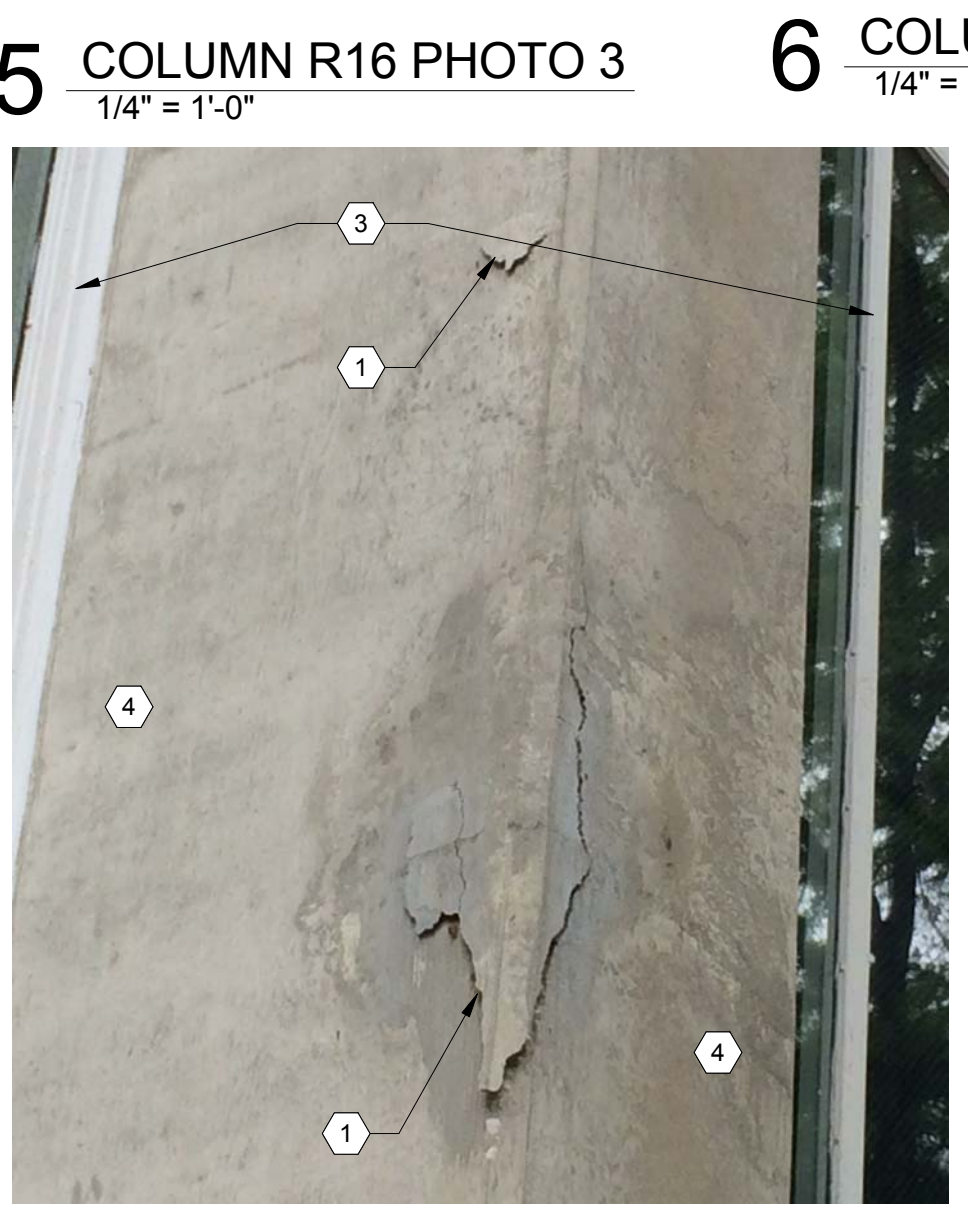
9 COLUMN R16 PHOTO 2



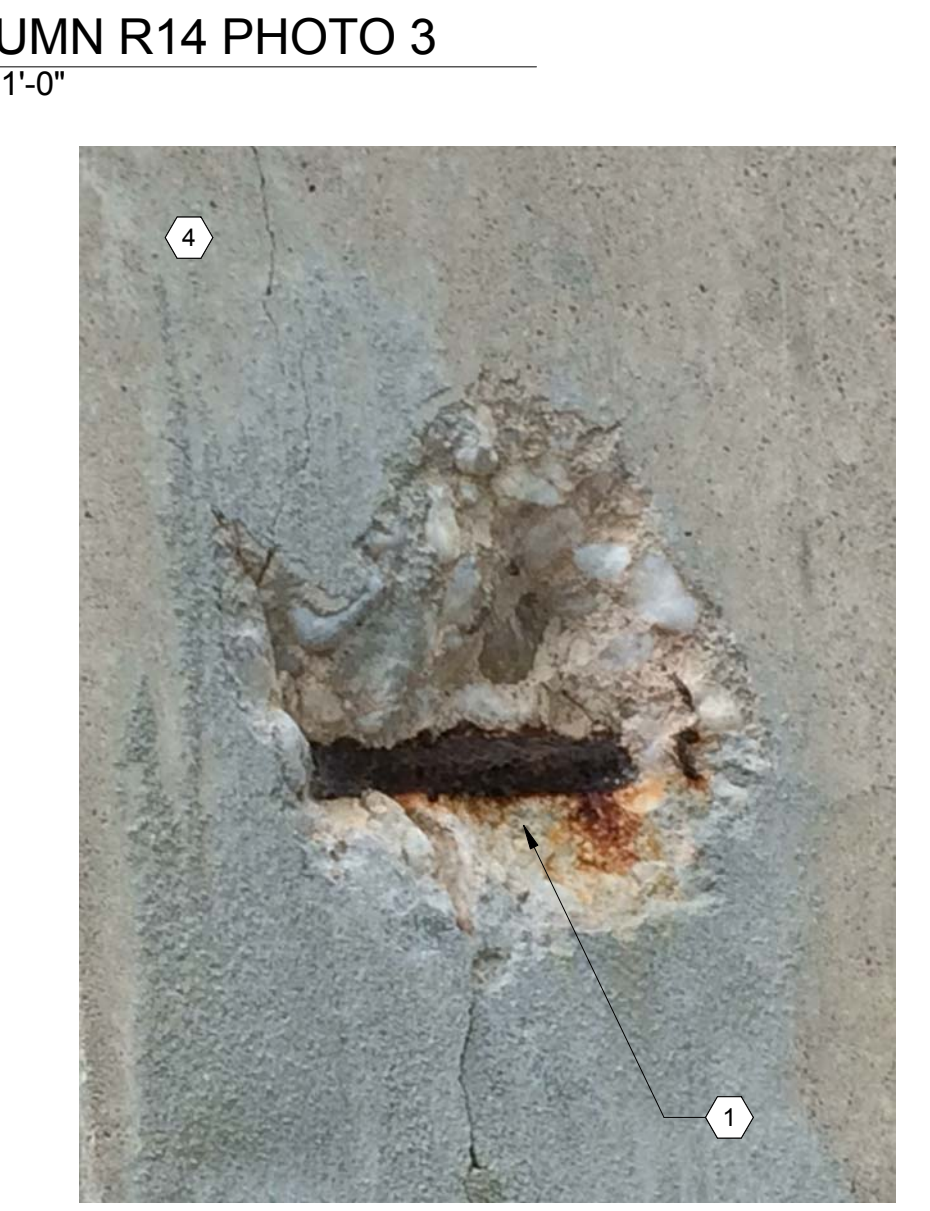
10 COLUMN 19 PHOTO 2



11 COLUMN 19 PHOTO 1



12 COLUMN R15 PHOTO 1



13 COLUMN R15 PHOTO 2



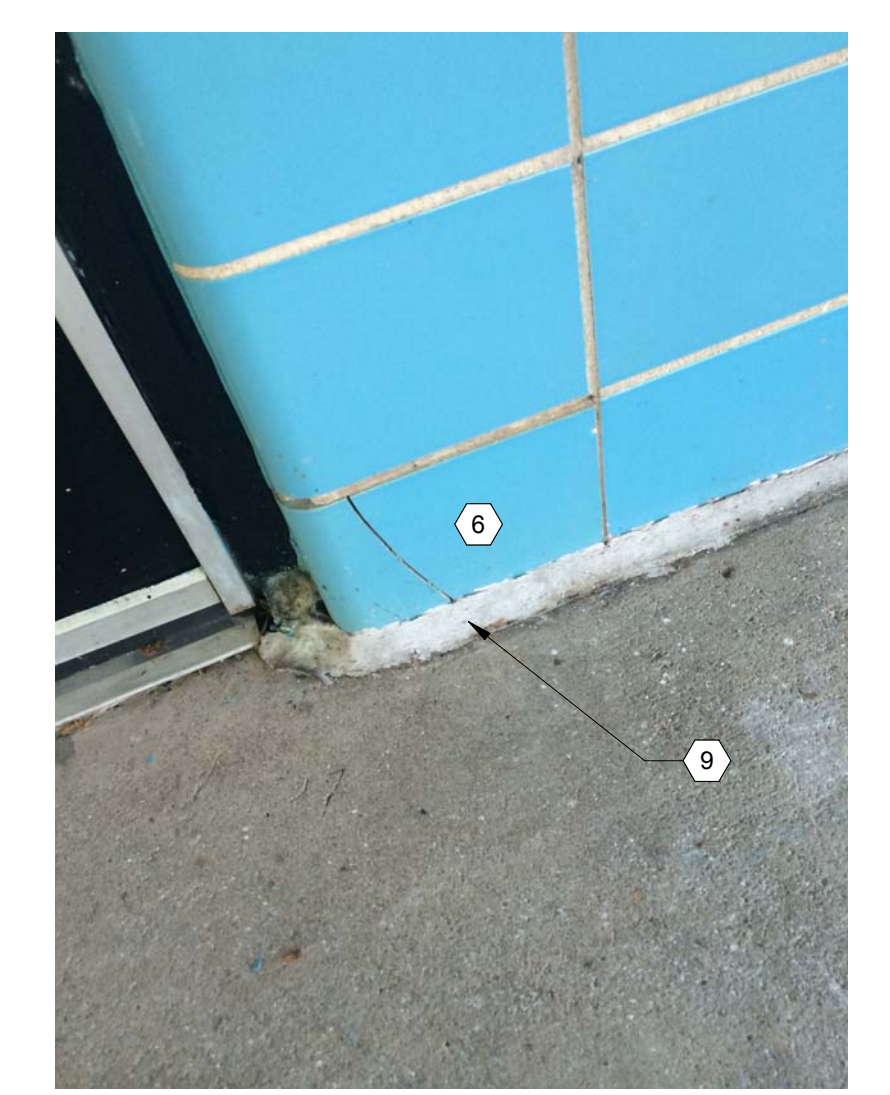
14 COLUMN R15 PHOTO 3



15 COLUMN R15 R16 PHOTO 1



16 COLUMN R15 R16 PHOTO 2



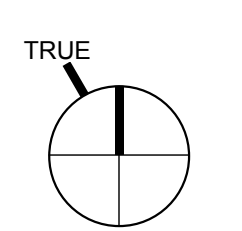
17 COLUMN R18 PHOTO 2



18 COLUMN R18 PHOTO 1

KEYNOTE LEGEND

NOTE	DESCRIPTION
1	REPAIR SPALLING CONCRETE
2	REPLACE DAMAGED GLASS PANE
3	TREAT RUST SPOTS AND REPAINT INTERIOR AND EXTERIOR CURTAIN WALL MULLIONS. REMOVE OLD FRAME EDGE AND GLAZED EDGE SEALANT AND RELACE WITH NEW.
4	POWER WASH ALL EXPOSED CONCRETE WALLS, COLUMNS, BEAMS AND PRECAST PANELS THEN RE-COAT WITH CEMENTITIOUS COATING.
5	RE-GROUT STRUCTURAL GLAZED TILE.
6	REMOVE AND REPLACE DAMAGED STRUCTURAL GLAZED TILE.
7	REMOVE AND RE-INSTALL STRUCTURAL GLAZED TILE.
8	RE-PAINT LOUVER, CONCRETE JOINT.
9	REMOVE AND REPLACE SEALANT JOINT.
10	SECURE EXSTG TRIM AS NECESSARY
11	ALUMINUM STOREFRONT TO REMAIN
12	TOUCH UP EXISTING PAINTED SURFACE
13	NEW PLAZA GUARDRAIL PANELS
14	NEW PLAZA GUARDRAIL & HANDRAIL
15	NEW OVERHEAD COILING DOOR
16	NEW CONCRETE STAIR
17	NEW LOUVER
18	NOT USED



REVISION	DATE	DESCRIPTION
ADDENDA OR MODIFICATION		
CD	TBD	CONSTRUCTION DOCUMENTS
DD	TBD	DESIGN DEVELOPMENT
SD	TBD	SCHEMATIC DESIGN
ISSUE	DATE	DESCRIPTION
FULL SET ISSUES		

PROJECT NO:	3800-005
P.I.C.	M. Woolen
P.MGR.	M. Woolen
P.ARCH.	G. Gupte
DESIGN BY	B. Bartholomew
JOB CAPTAIN	Author
DRAWN BY	Checker
CHECKED BY	Checker
ODELL ASSOCIATES INC. © 2014	

EXTERIOR ELEVATIONS
FLATTENED

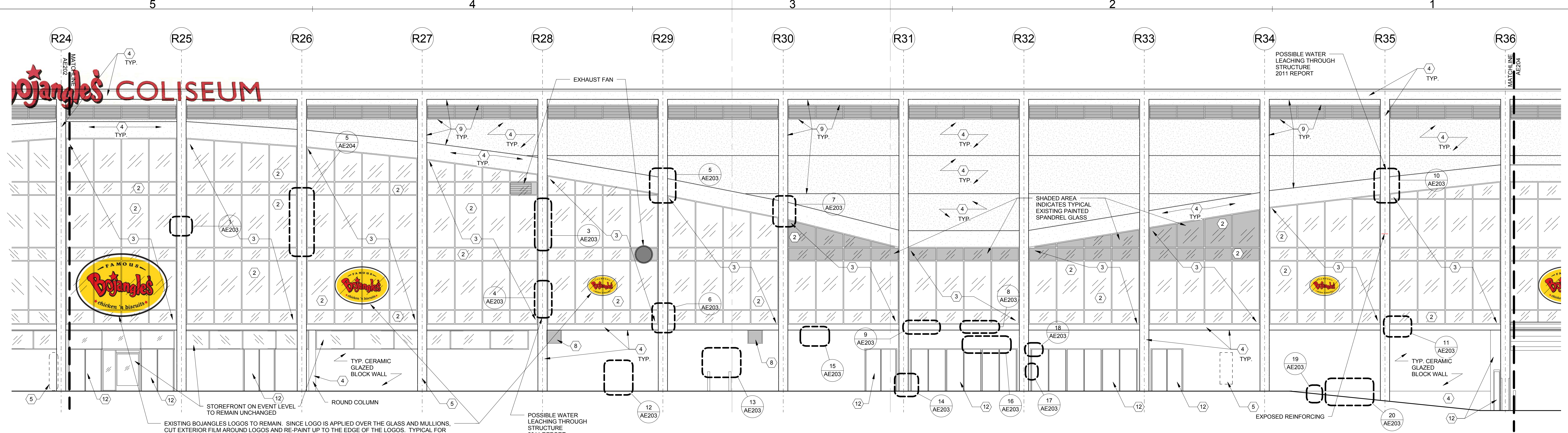
SHEET IDENTIFIER
AE202

3/23/2018 8:58:28 AM P:\3800-005_Bojangles_Coliseum_Rev02\Drawings_Coliseum_Rev02\Phase 2.rvt

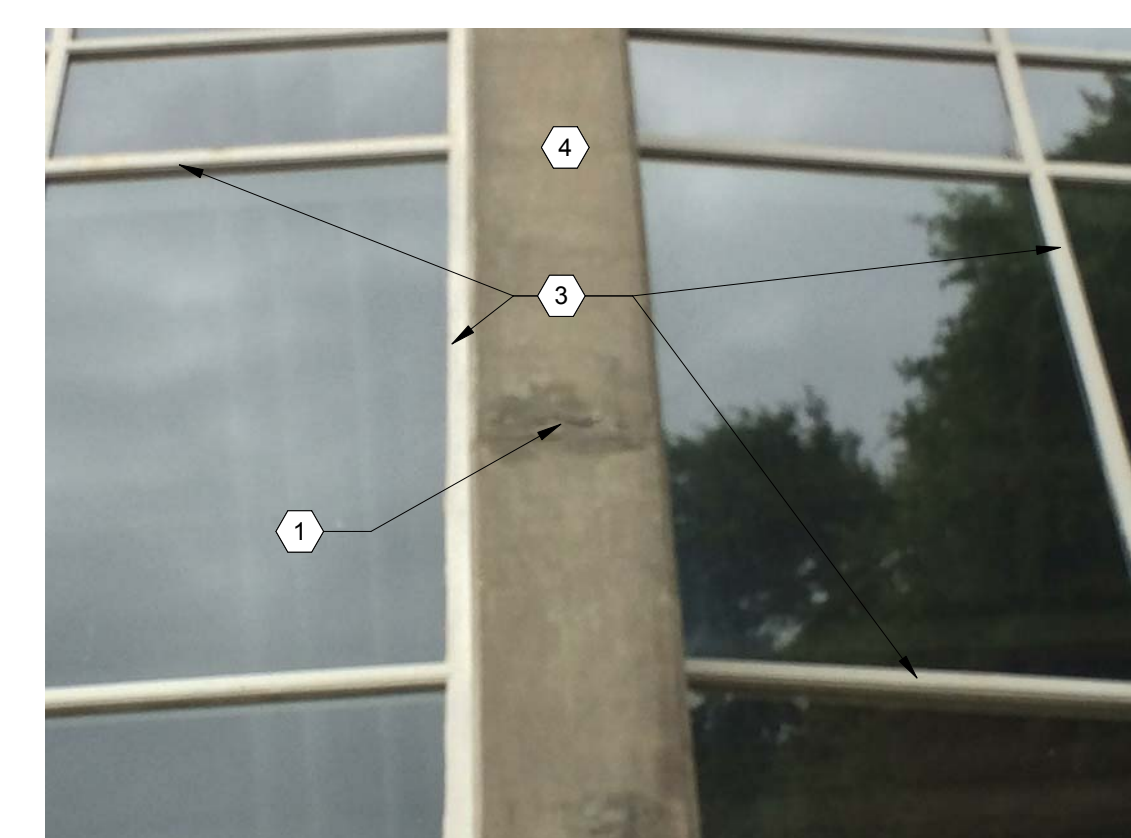
Bojangles' Coliseum
Phase 2

2700 EAST INDEPENDENCE
BOULEVARD CHARLOTTE, NC 28205

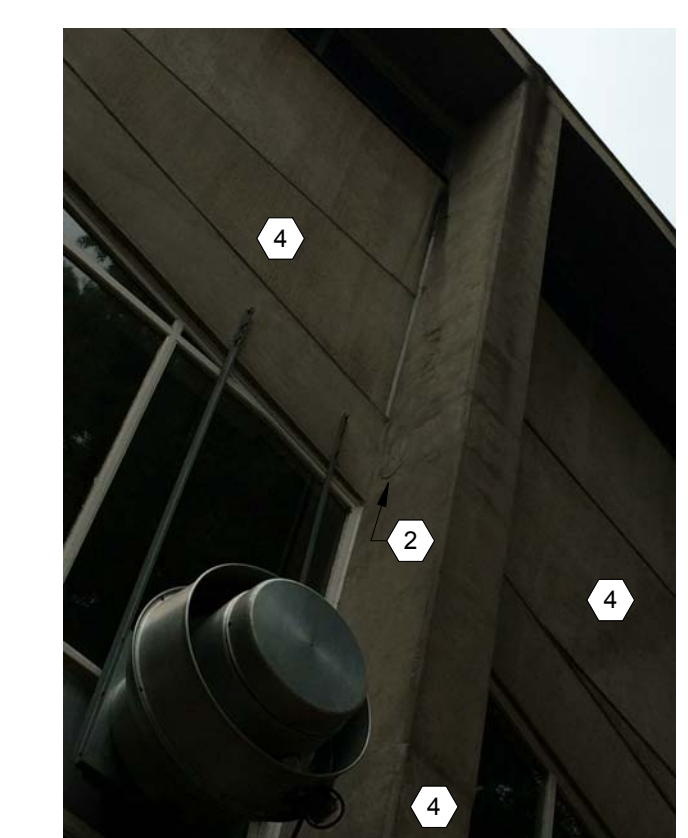
CITY OF CHARLOTTE



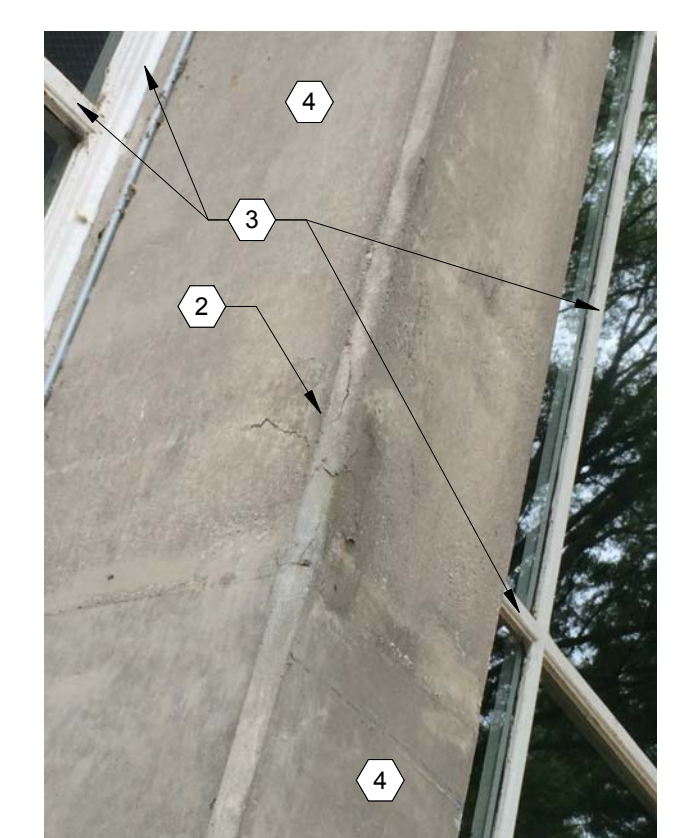
D5 EXTERIOR ENLARGED ELEVATION COLUMN LINES 25-36
1/8" = 1'-0"



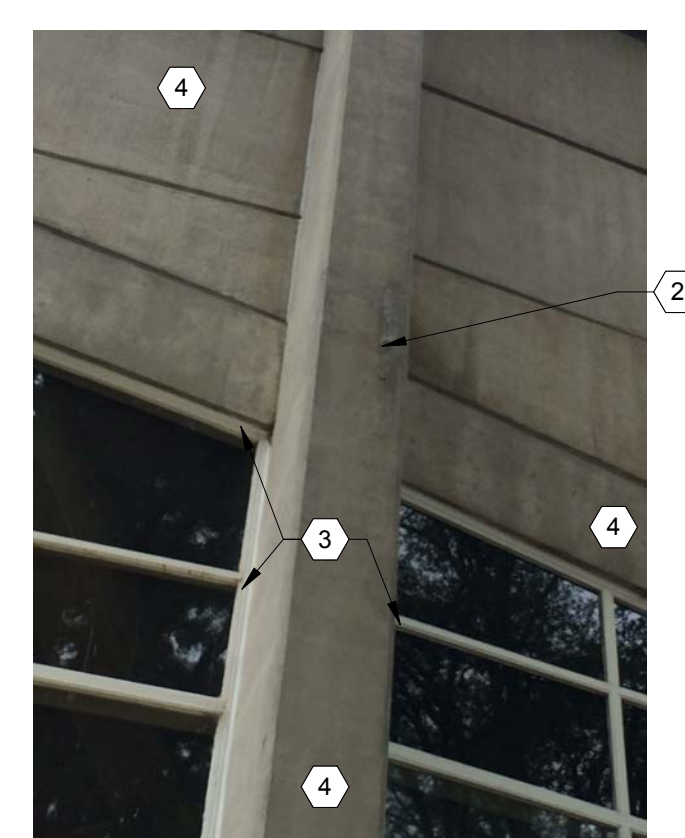
1 COLUMN R25 PHOTO 1



5 COLUMN R29 PHOTO 1



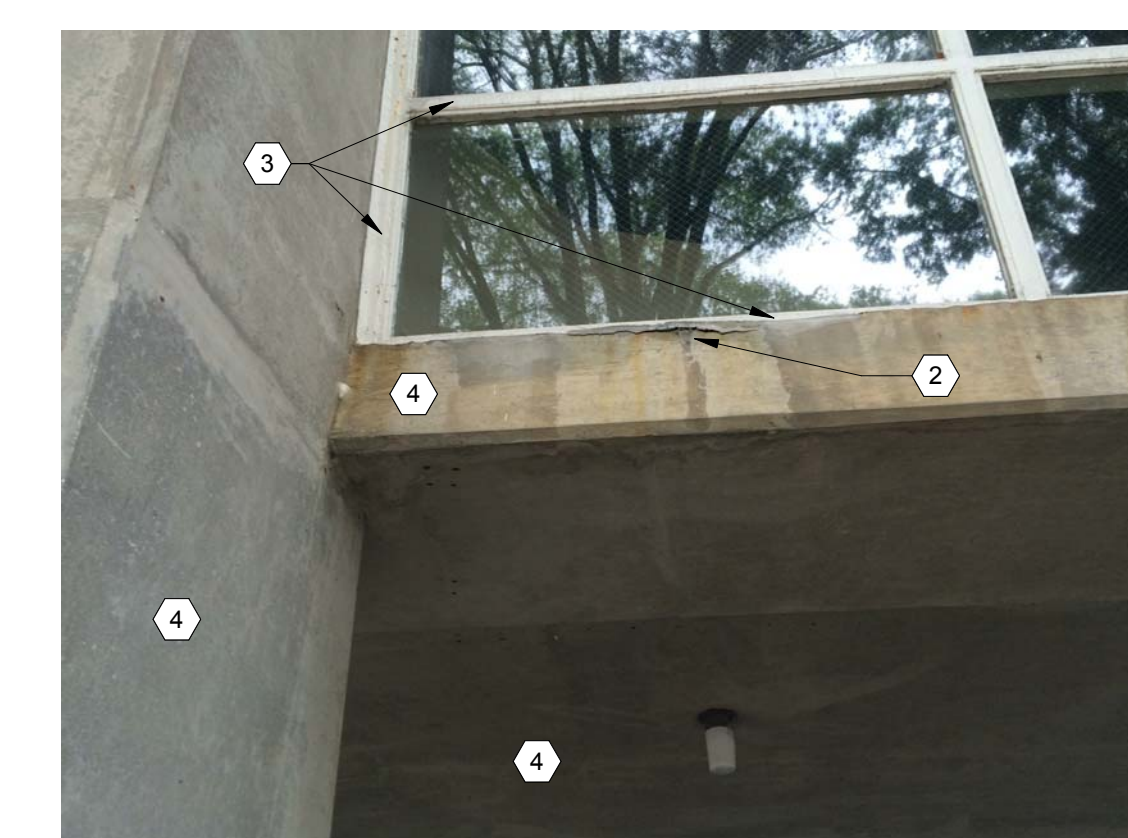
6 COLUMN R29 PHOTO 2



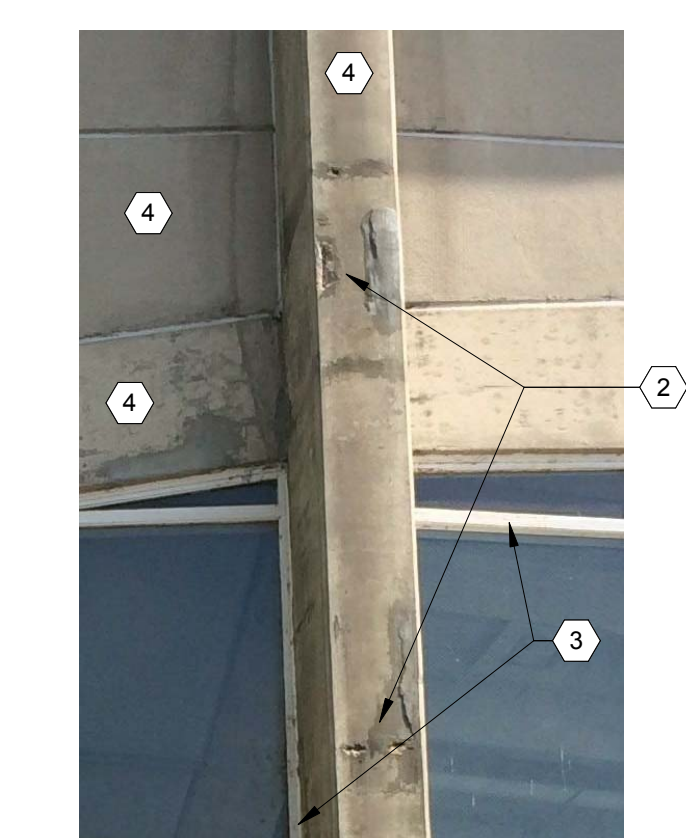
7 COLUMN R30 PHOTO 1



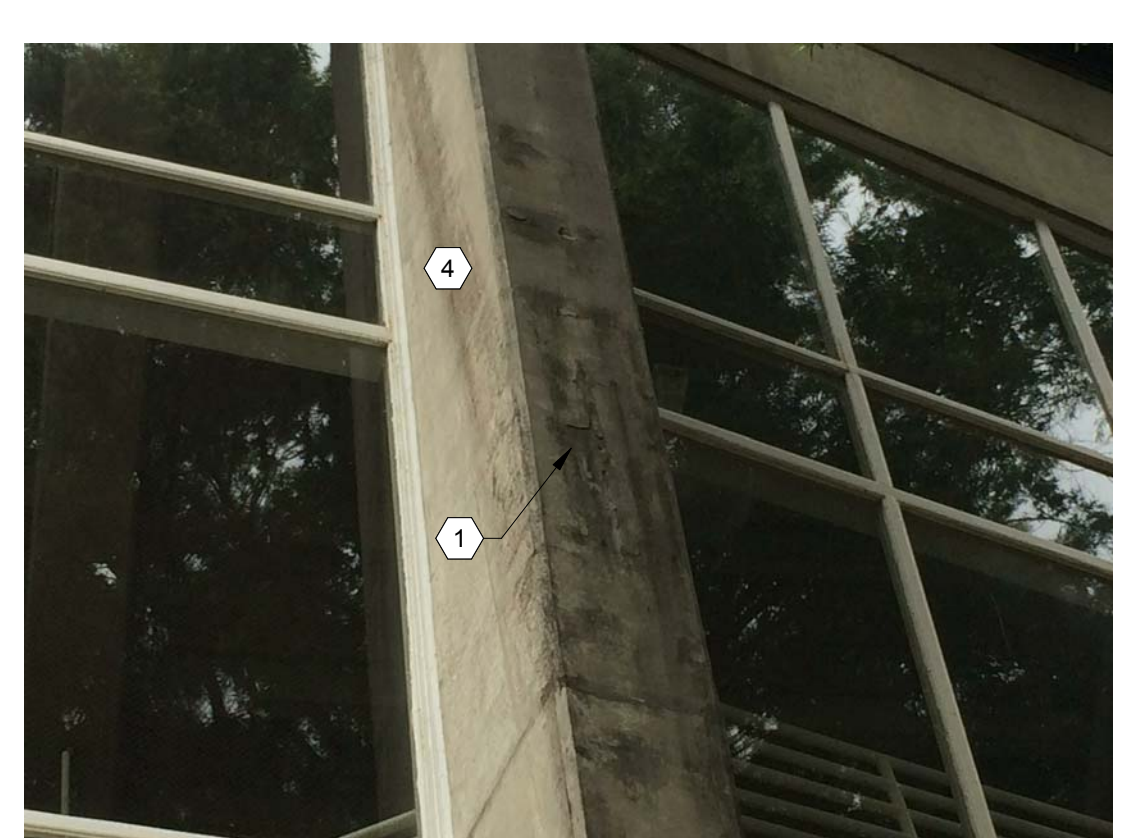
8 COLUMN R31-32 PHOTO 1



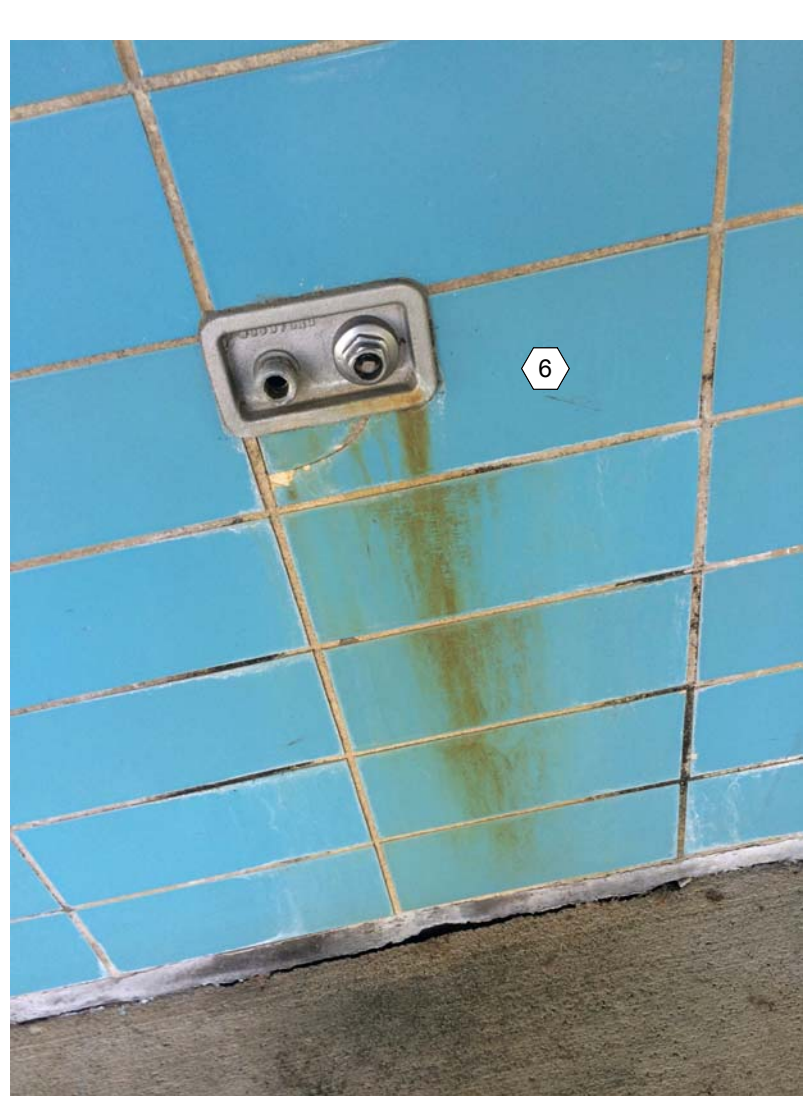
9 COLUMN R31 PHOTO 1



10 COLUMN R35 PHOTO 1



2 COLUMN R26 PHOTO 1



12 COLUMN R28 R29 PHOTO 1



13 COLUMN R29 R30 PHOTO 3



18 COLUMN R32 PHOTO 2



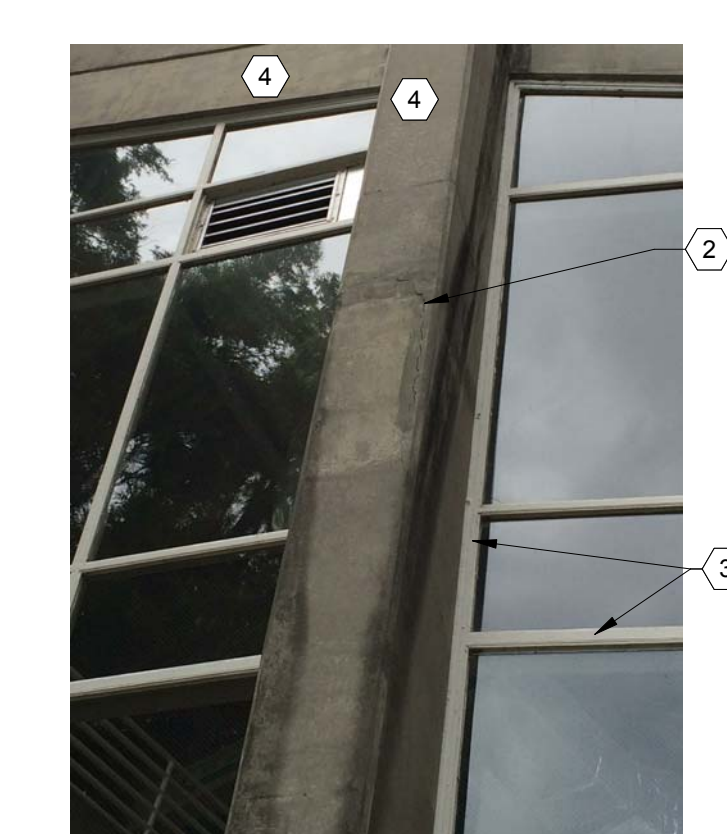
15 COLUMN R30 R31 PHOTO 1



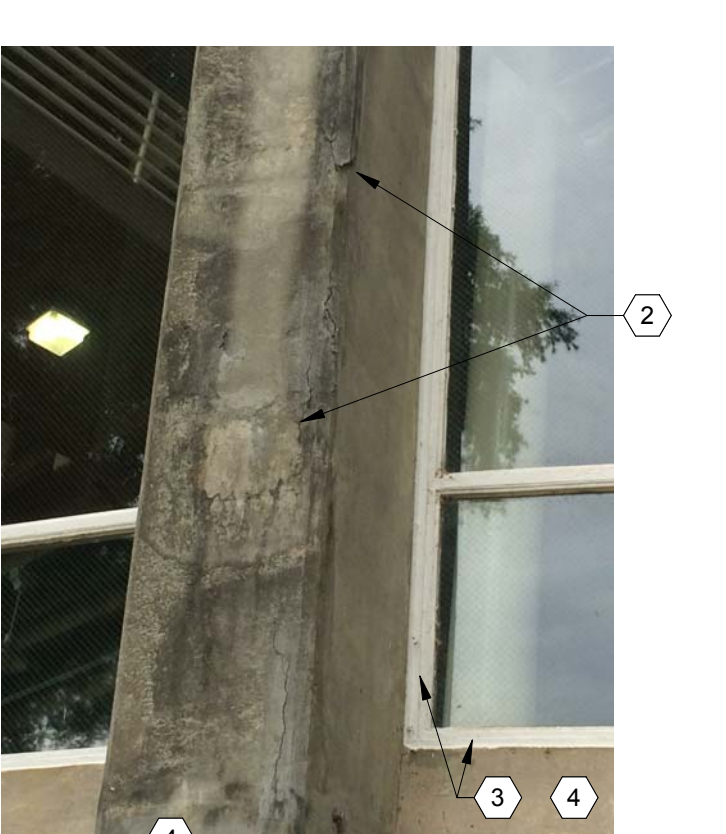
19 COLUMN R34 R35 PHOTO 1



11 COLUMN R35 PHOTO 2



3 COLUMN R28 PHOTO 1



4 COLUMN R28 PHOTO 2



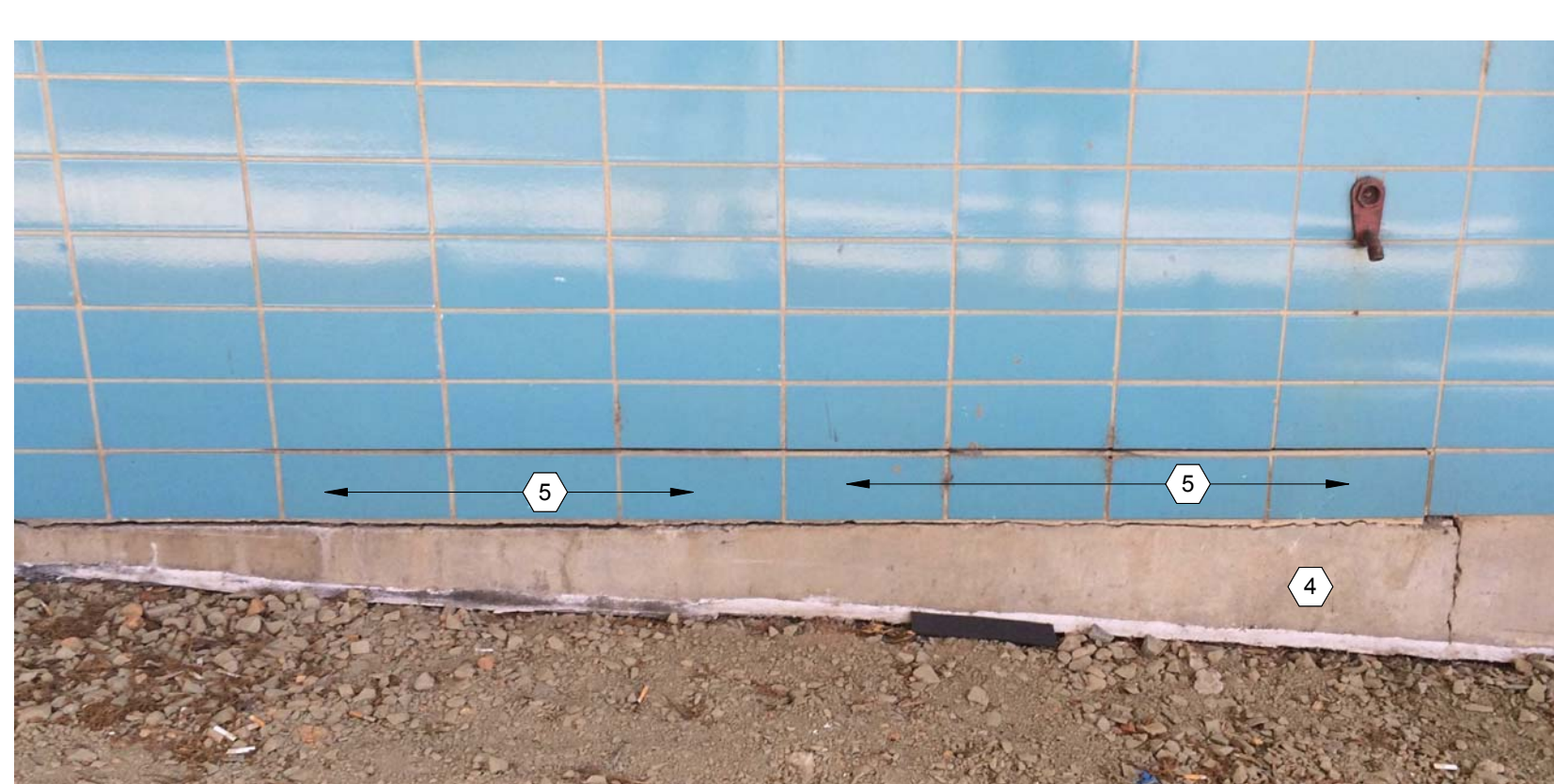
14 COLUMN R31 PHOTO 2



17 COLUMN R32 PHOTO 1



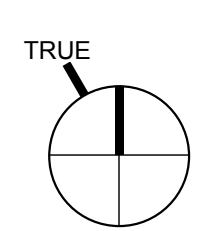
16 COLUMN R31 R32 PHOTO 1



20 COLUMN R34 R35 PHOTO 2

KEYNOTE LEGEND

NOTE	DESCRIPTION
(1)	REPAIR SPALLING CONCRETE
(2)	REPLACE DAMAGED GLASS PANES
(3)	TREAT RUST SPOTS AND REPAINT INTERIOR AND EXTERIOR CURTAIN WALL MULLIONS. REMOVE OLD FRAME EDGE AND GLAZED EDGE SEALANT AND RELACE WITH NEW.
(4)	POWER WASH ALL EXPOSED CONCRETE WALLS, COLUMNS, BEAMS AND PRECAST PANELS THEN RE-COAT WITH CEMENTITIOUS COATING.
(5)	RE-GROUT STRUCTURAL GLAZED TILE.
(6)	REMOVE AND REPLACE DAMAGED STRUCTURAL GLAZED TILE.
(7)	REMOVE AND RE-INSTALL STRUCTURAL GLAZED TILE.
(8)	RE-PAINT LOUVER, CONCRETE WALL.
(9)	REMOVE AND REPLACE SEALANT JOINT.
(10)	SECURE EXISTG TRIM AS NECESSARY.
(11)	ALUMINUM STOREFRONT TO REMAIN.
(12)	TOUCH UP EXISTING PAINTED SURFACE.
(13)	NEW PLAZA GUARDRAIL PANELS.
(14)	NEW PLAZA GUARDRAIL & HANDRAIL.
(15)	NEW OVERHEAD COILING DOOR.
(16)	NEW CONCRETE STAIR.
(17)	NEW LOUVER.
(18)	NOT USED.



REVISION	DATE	DESCRIPTION
CD	TBD	CONSTRUCTION DOCUMENTS
DD	TBD	DESIGN DEVELOPMENT
SD	TBD	SCHEMATIC DESIGN
ISSUE	DATE	DESCRIPTION

FULL SET ISSUES

PROJECT NO: 3800-005
P.I.C. M. Woollen
P.MGR. M. Woollen
P.ARCH. G. Gupte
DESIGN BY B. Bartholomew
JOB CAPTAIN
DRAWN BY Author
CHECKED BY Checker

ODELL ASSOCIATES INC. © 2014

SHEET TITLE
EXTERIOR ELEVATIONS FLATTENED

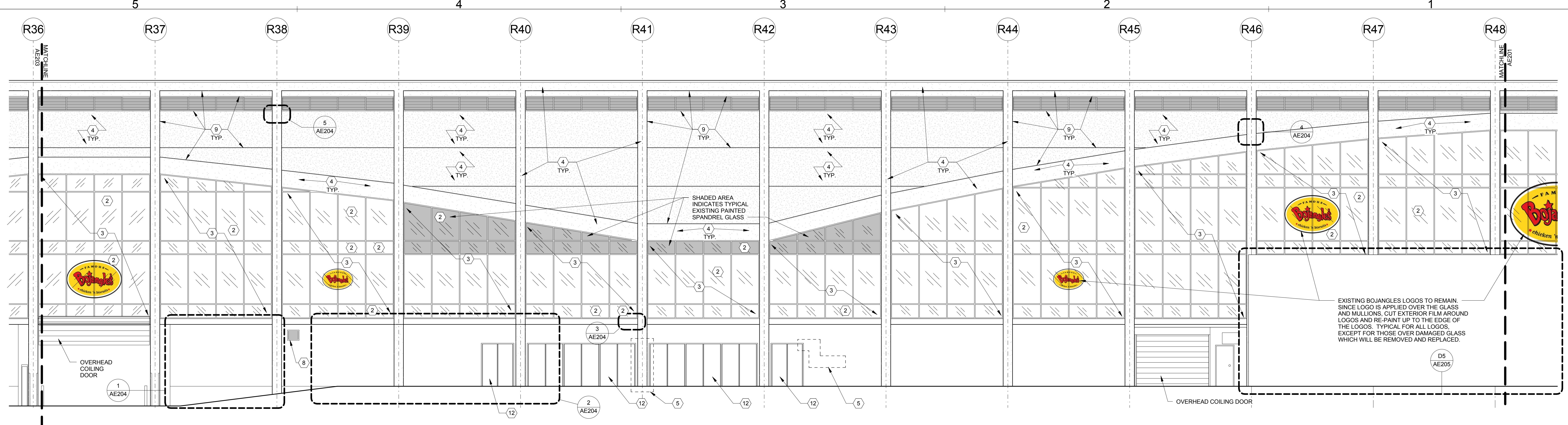
SHEET IDENTIFIER
AE203

3/23/2018 8:51:18 AM P:\3800-005_Bojangles_Coliseum_Revamp\Drawings\Columns_Revamp\Bojangles_Coliseum_Revamp_Phase 2.rvt

**Bojangles' Coliseum
Phase 2**

2700 EAST INDEPENDENCE
BOULEVARD CHARLOTTE, NC 28205

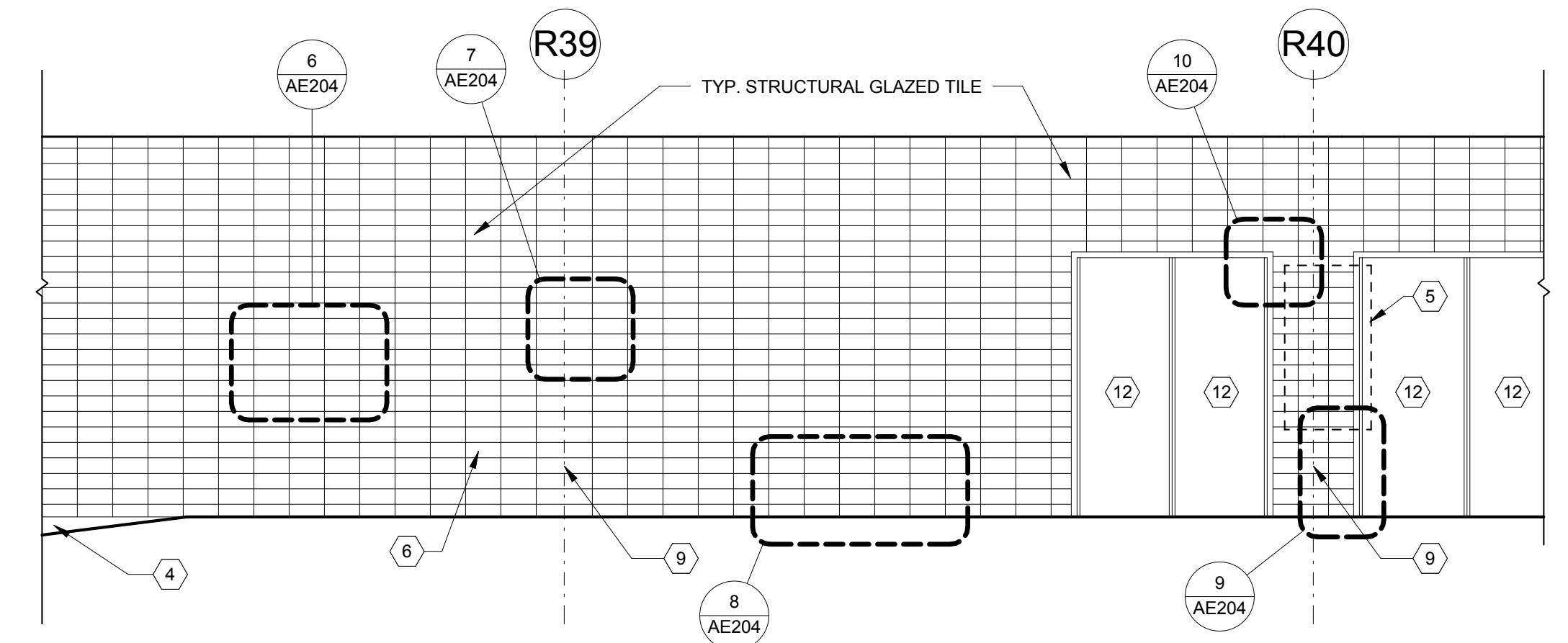
CITY OF CHARLOTTE



D5 EXTERIOR ENLARGED ELEVATION COLUMN LINES 37-48
1/8" = 1'-0"



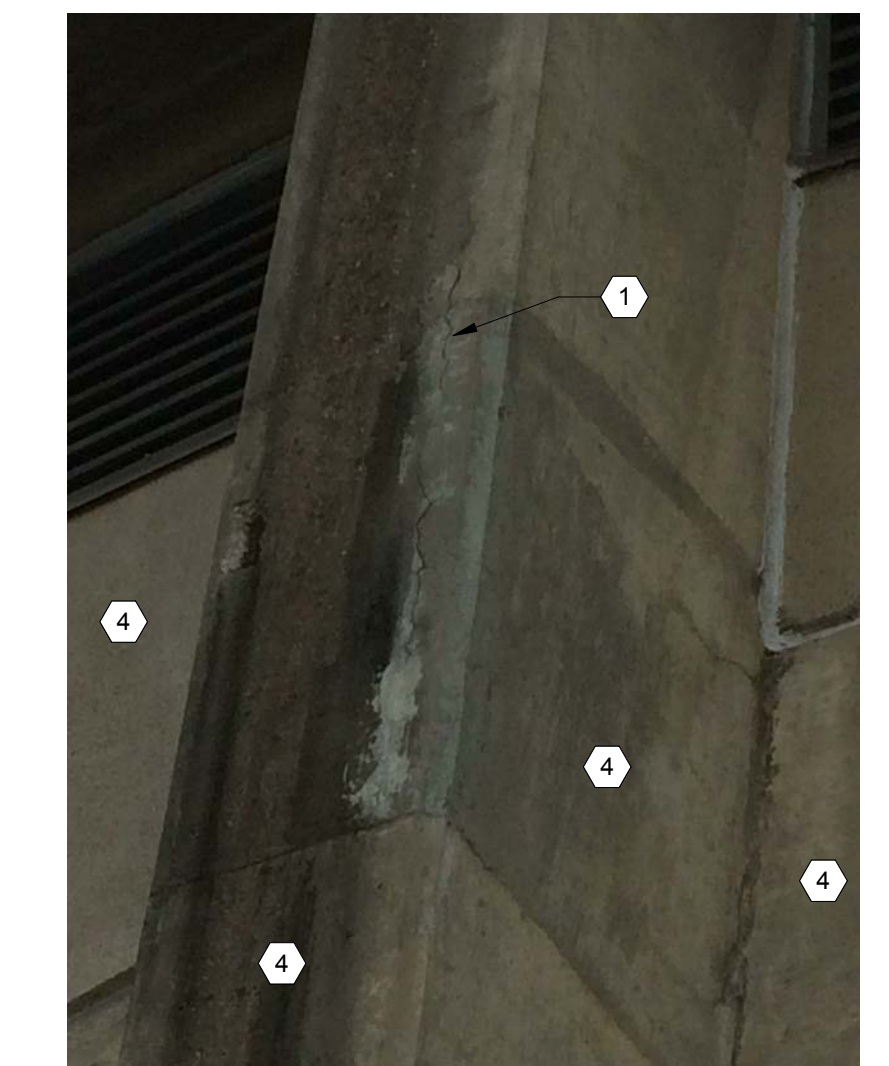
1 COLUMN R37-38 PHOTO 1



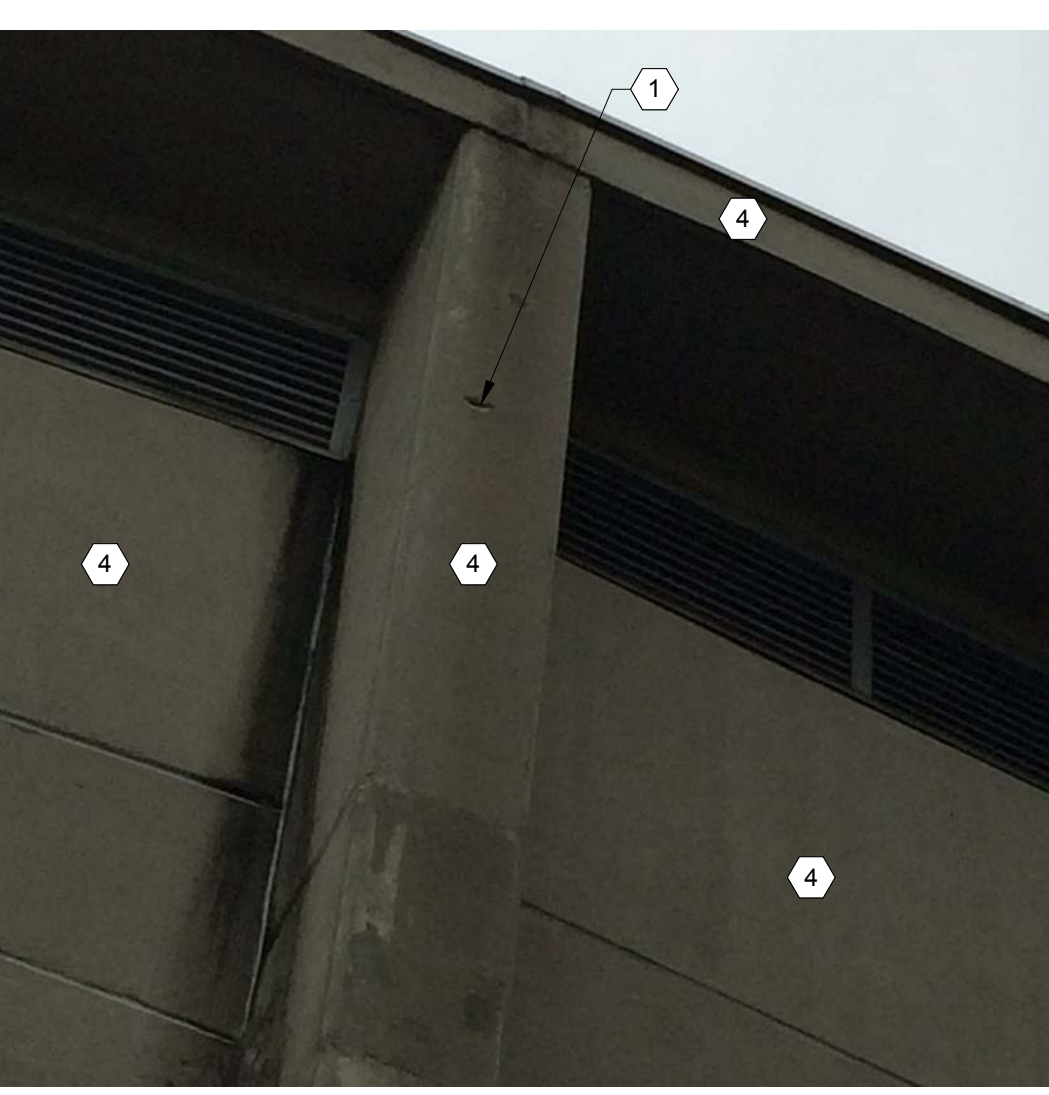
2 EXTERIOR DETAIL ELEVATION R38-R40
1/4" = 1'-0"



3 COLUMN R41 PHOTO 1



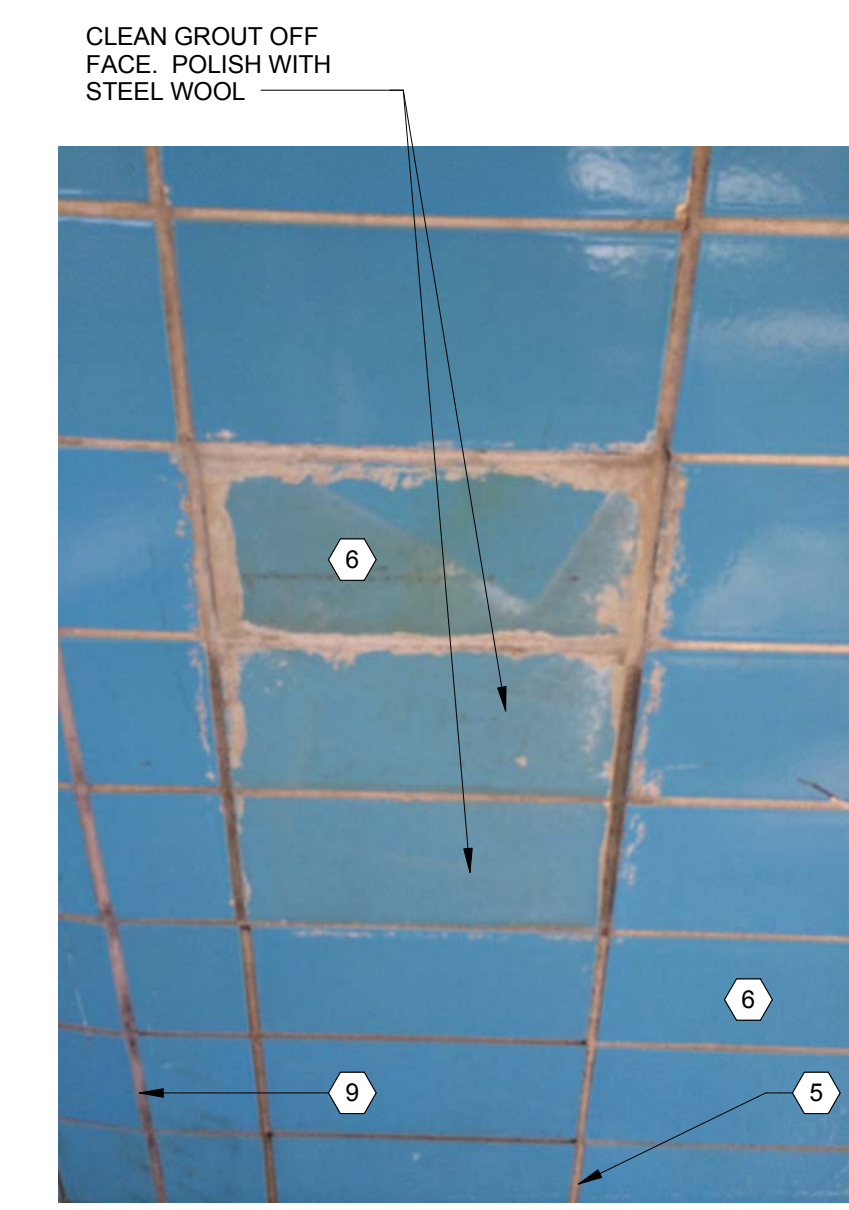
4 COLUMN R46 PHOTO 1



5 COLUMN R38 PHOTO 1



6 COLUMN R38 R39 PHOTO 1



7 COLUMN R39 PHOTO 1



8 COLUMN R39 R40 PHOTO 1



9 COLUMN R40 PHOTO 2



10 COLUMN R40 PHOTO 1

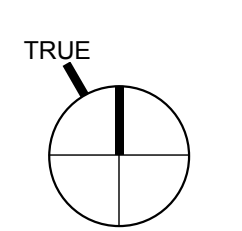


11 TYPICAL SIGN

REMOVE AND REPLACE ALL SIGNS BEFORE COATING CONCRETE SURFACES

KEYNOTE LEGEND

NOTE	DESCRIPTION
1	REPAIR SPALLING CONCRETE
2	REPLACE DAMAGED GLASS PANE
3	TREAT RUST SPOTS AND REPAINT INTERIOR AND EXTERIOR CURTAIN WALL MULLIONS. REMOVE OLD FRAME EDGE AND GLAZED EDGE SEALANT AND RELACE WITH NEW.
4	POWER WASH ALL EXPOSED CONCRETE WALLS, COLUMNS, BEAMS AND PRECAST PANELS THEN RE-COAT WITH CEMENTITIOUS COATING.
5	RE-GROUT STRUCTURAL GLAZED TILE.
6	REMOVE AND REPLACE DAMAGED STRUCTURAL GLAZED TILE
7	REMOVE AND RE-INSTALL STRUCTURAL GLAZED TILE.
8	RE-PAINT LOUVER, CONCRETE WALL.
9	REMOVE AND REPLACE SEALANT JOINT.
10	SECURE EXSTG TRIM AS NECESSARY
11	ALUMINUM STOREFRONT TO REMAIN
12	TOUCH UP EXISTING PAINTED SURFACE
13	NEW PLAZA GUARDRAIL PANELS
14	NEW PLAZA GUARDRAIL & HANDRAIL
15	NEW OVERHEAD COILING DOOR
16	NEW CONCRETE STAIR
17	NEW LOUVER
18	NOT USED



REVISION	DATE	DESCRIPTION
ADDENDUM OR MODIFICATION		
CD	TBD	CONSTRUCTION DOCUMENTS
DD	TBD	DESIGN DEVELOPMENT
SD	TBD	SCHEMATIC DESIGN
ISSUE	DATE	DESCRIPTION
FULL SET ISSUES		

PROJECT NO: 3800-005
P.I.C. M. Woollen
P.MGR. M. Woollen
P.ARCH. G. Gupte
DESIGN BY B. Bartholomew
JOB CAPTAIN
DRAWN BY Author
CHECKED BY Checker

ODELL ASSOCIATES INC. © 2014

**EXTERIOR
ELEVATIONS
FLATTENED**

SHEET IDENTIFIER
AE204

3/23/2018 8:52:32 AM P:\3800\005_Bojangles_Coliseum_Rev01\Drawings\Columns\Exterior\Phase2.rvt