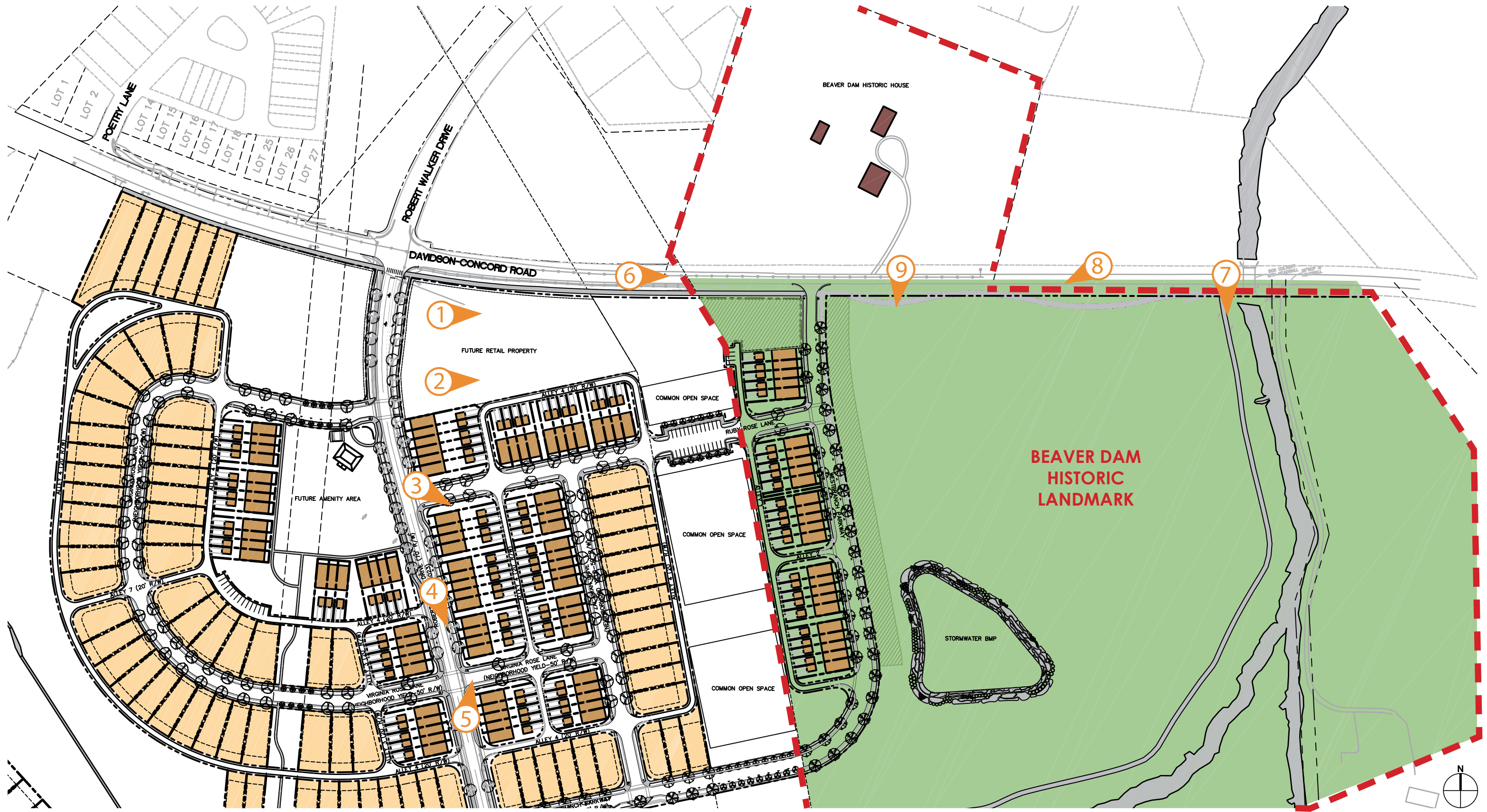


--- FORMER HISTORIC LANDMARK (39.10 ACRES)  
 --- NEW HISTORIC LANDMARK (59.50 ACRES)

**LEGEND / LOT KEY**

- Proposed Townhome Lots
- Proposed 42 ft Lots
- Proposed 65 ft Lots
- Proposed 90 ft Lots
- Future Development

SCALE: 1"=100'  
 0 100 200 300'



**WestBranch**  
 AREA PLAN  
 DAVIDSON, NC  
 08/26/16





**WestBranch**  
BEAVER DAM CONTEXT  
DAVIDSON, NC  
08/26/16



BEAVER DAM HISTORIC HOUSE



BEAVER DAM CHARACTER



HISTORIC VIEWSHED



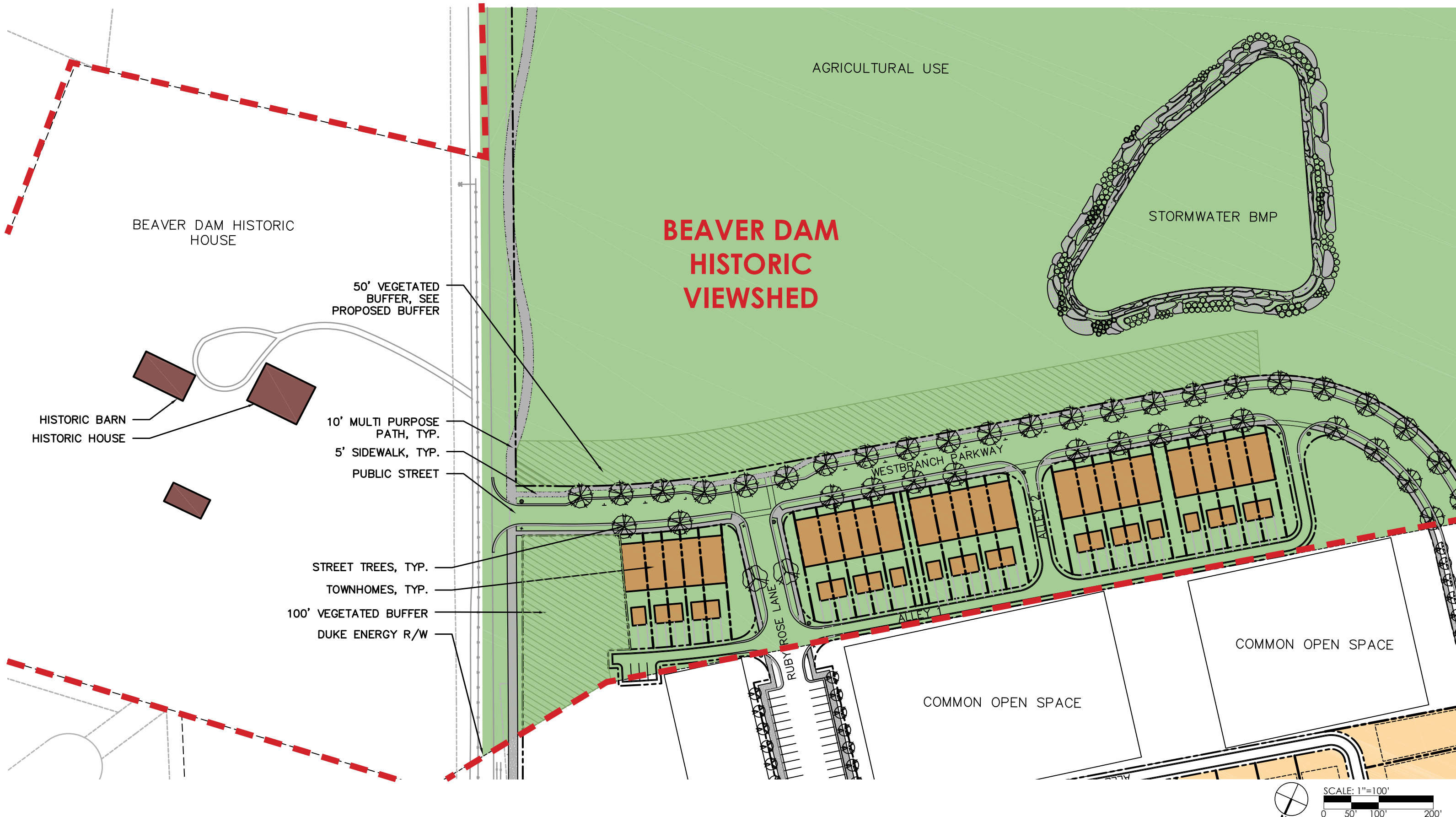
WestBranch  
BEAVER DAM PROPERTY  
DAVIDSON, NC  
08/26/16





**WestBranch**  
 HISTORICAL LANDMARK SITE PLAN  
 DAVIDSON, NC  
 08/26/16





**WestBranch**  
 HISTORICAL LANDMARK SITE PLAN ENLARGEMENT  
 DAVIDSON, NC  
 08/26/16



WITHOUT TOWNHOMES/BUFFER



WITH TOWNHOMES/BUFFER



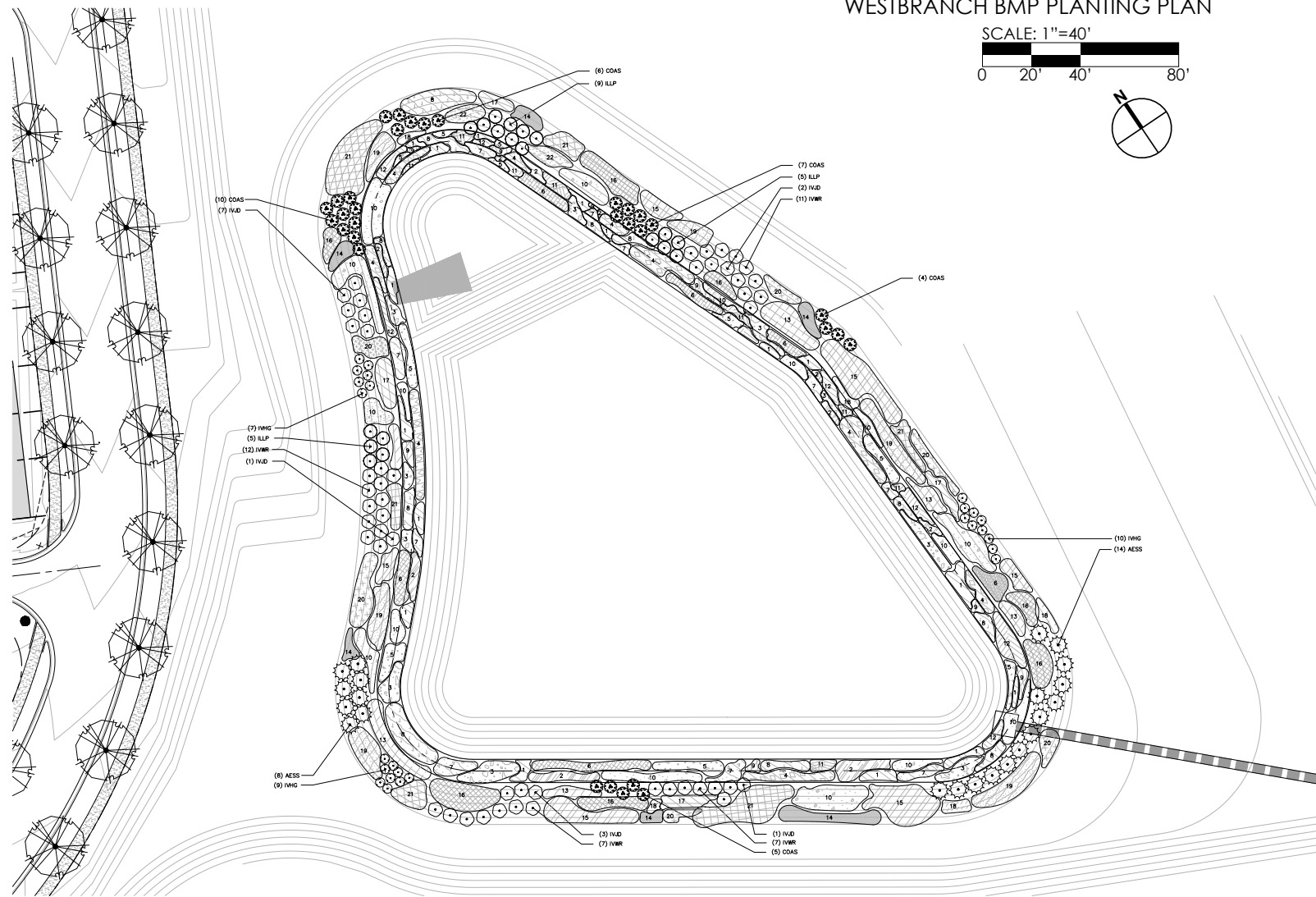
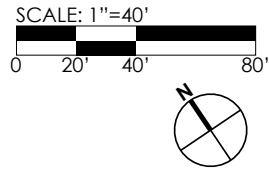
TOWNHOME ELEVATION



WestBranch  
PERSPECTIVES / ELEVATIONS  
DAVIDSON, NC  
08/26/16



WESTBRANCH BMP PLANTING PLAN



CMC LINCOLN



WESTBRANCH PROPOSED BUFFER ELEVATION

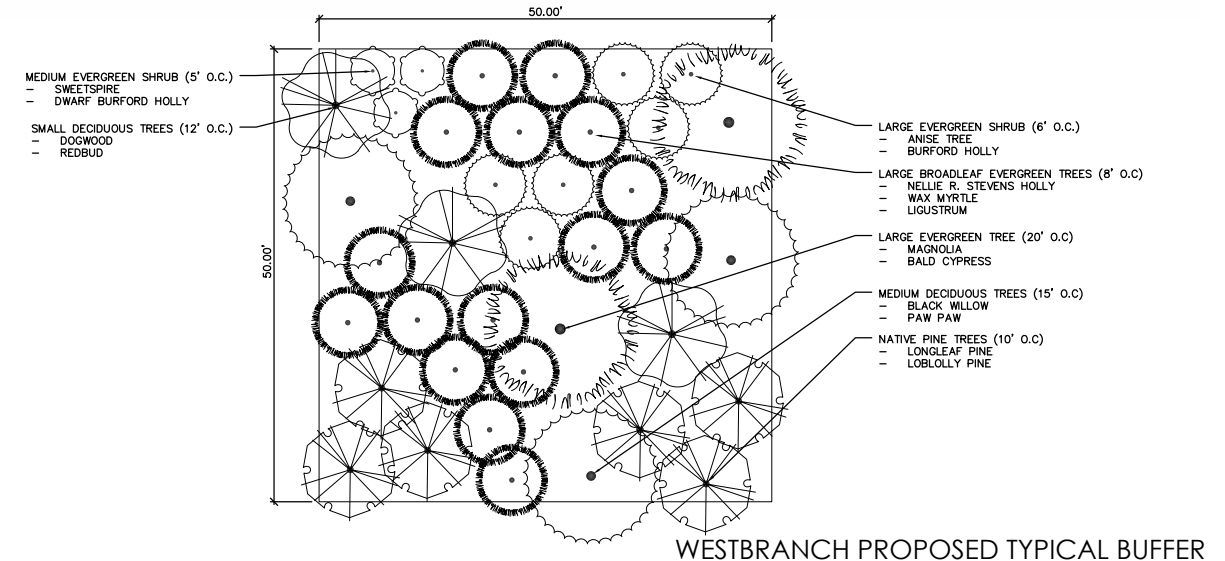
PLANT SCHEDULE BMP 2

PLANT SCHEDULE MET POND BANK

SHRUBS	QTY	BOTANICAL NAME	COMMON NAME	CONT.	SIZE	SPAC.	REMARKS
AESS	22	AESCLUSUS SYLVATICA	PAINTED BUCKEYE	CONT.	36"-42" HT.		
COAS	32	CORNUS ALBA 'SIBIRICA'	REDBARK DOGWOOD	CONT.	24" - 30" HT.	5' O.C.	
IVLD	14	ILEX VERTICILLATA 'JIM DANDY'	JIM DANDY WINTERBERRY	CONT.	24" - 30" HT.	5' O.C.	MALE COMPANION
IVWR	37	ILEX VERTICILLATA 'WINTER RED'	WINTER RED WINTERBERRY	CONT.	24" - 30" HT.	5' O.C.	NEEDS MALE COMPANION FOR POLLINATION
ILP	19	ILLICUM PARVIFLORUM	ANISE TREE	CONT.	36"-42" HT.	6' O.C.	
IVHD	26	ITEA VIRGINICA	SWEETSPHIRE	CONT.	18"-24" HT.	3'-6" O.C.	
SHRUB AREAS	QTY	BOTANICAL NAME	COMMON NAME	CONT.	SEAC		REMARKS
(13) ASCO	129	ASCLEPIAS INCARNATA	SWAMP MILKWEED	CONT.	30" O.C.		
(14) BELN	26	BERBERIS JULIANAE 'NANA'	DWARF WINTERGREEN BARBERRY	CONT.	5' O.C.		20"-24" HT.
(15) BTCP	95	BERBERIS THUNBERGII 'CRIMSON PYGMY'	CRIMSON PYGMY BARBERRY	CONT.	4' O.C.		6"-10" HT.
(6) COSC	49	CORNUS SERICEA 'CARDINAL'	'CARDINAL' RED-TWIG DOGWOOD	CONT.	4' O.C.		
(16) EUPD	295	EUPATORIUM DUBIUM	JOE-PYE WEED	CONT.	2' O.C.		
(8) JEBA	273	JUNCUS EFFUSUS 'BLUE ARROWS'	BLUE ARROWS SOFT RUSH	2" DIA X 5" PLUG	24" O.C.		
(17) LIAP	202	LIASTRIS PYCNOSTACHYA	PRAIRIE BLAZING STAR	CONT.	18" O.C.		
(18) LOBC	154	LOBELIA CARDINALIS	CARDINAL FLOWER	2" DIA X 5" PLUG	18" O.C.		
(10) PANW	540	PANICUM VIRGATUM 'NORTH WIND'	NORTHWIND SWITCH GRASS	2" DIA X 5" PLUG	24" O.C.		
(19) PAVS	204	PANICUM VIRGATUM 'SHEMANGOAH'	SWITCH GRASS	2" DIA X 5" PLUG	30" O.C.		
(20) PYPY	84	PYRACANTHA X 'RED ELF' TM	RED ELF PYRACANTHA	CONT.	3" O.C.		
(21) SCHR	356	SCHIZACHYRUM SCOPARIUM	LITTLE BLUESTEM GRASS	2" DIA X 5" PLUG	24" O.C.		
(22) VERN	25	VERNONIA NOVEBORACENSIS	COMMON IRONWEED	2" DIA X 5" PLUG	36" O.C.		

PLANT SCHEDULE LITTORAL SHELF

SHRUB AREAS	QTY	BOTANICAL NAME	COMMON NAME	CONT.	SPAC.
(1) ACCV	345	ACORUS CALAMUS 'VARIEGATUS'	STRIPED SWEET FLAG	2" DIA X 5" PLUG	18" O.C.
(2) BIDA	118	BIDENS ARISTOSA	TICKSEED SUNFLOWER	2" DIA X 5" PLUG	2" O.C.
(3) CARN	215	CAREX NORMALIS	GREATER STRAW SEDGE	2" DIA X 5" PLUG	24" O.C.
(4) CARS	688	CAREX STRICTA	TUSsock SEDGE	2" DIA X 5" PLUG	15" O.C.
(5) CHED	289	CHELONE OBLIQUA	ROSE TURTLE-HEAD	CONT.	18" O.C.
(6) COSC	49	CORNUS SERICEA 'CARDINAL'	'CARDINAL' RED-TWIG DOGWOOD	CONT.	4' O.C.
(7) IRIV	575	IRIS VIRGINICA	BLUE FLAG IRIS	2" DIA X 5" PLUG	12" O.C.
(8) JEBA	273	JUNCUS EFFUSUS 'BLUE ARROWS'	BLUE ARROWS SOFT RUSH	2" DIA X 5" PLUG	24" O.C.
(9) MDBS	143	MONARDA DIDYMA 'BLUE STOCKINGS'	BEE BALM	CONT.	15" O.C.
(10) PANW	540	PANICUM VIRGATUM 'NORTH WIND'	NORTHWIND SWITCH GRASS	2" DIA X 5" PLUG	24" O.C.
(11) SAGL	166	SAGITTARIA LATIFOLIA	LANCE-LEAFED ARROWHEAD	2" DIA X 5" PLUG	15" O.C.
(12) SCIA	256	SCIRPUS ATROVIRENS	DARK GREEN BULRUSH	2" DIA X 5" PLUG	18" O.C.



WESTBRANCH PROPOSED TYPICAL BUFFER



**WestBranch**  
 HISTORICAL LANDMARK STORMWATER BMP  
 DAVIDSON, NC  
 08/26/16

