

We Believe

A healthy organization is accountable to the community.



Families
PLM Together

ANNUAL REPORT
2013/14

Dear PLM Families Together Supporters,

Thirty-four years ago, PLM Families Together was founded by people who saw a need in our community and decided to make a difference. In 2013-14, we carried on that tradition of caring with a year that saw continued growth and a stronger-than-ever commitment to help families experiencing homelessness. Through our program, we helped 81 families return to independence last year. That's one family every 4.5 days.

We enter 2014-15 a solid, stable agency with a model that is effective and efficient. We strive to be an integral, connected part of the community, and a leader among service providers in the areas of advocacy, operational excellence, and post-housing support. As PLM Families Together grows in our capacity to change what tomorrow looks like for families in crisis, we are dedicated to honoring our history of compassion and innovation.

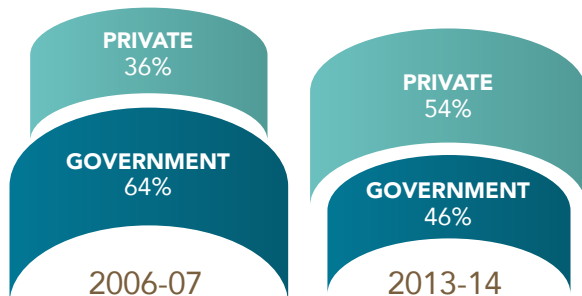
The support we receive from individuals, corporations, foundations, the government, and fellow non-profits enables us to make a true difference in the lives of the people we are honored to serve. We thank everyone who has helped us move families from homelessness to independence for a successful year, and we look forward to the future.



KATHY BLUM
President — Board of Directors

REDUCING DEPENDENCE ON GOVERNMENT FUNDING

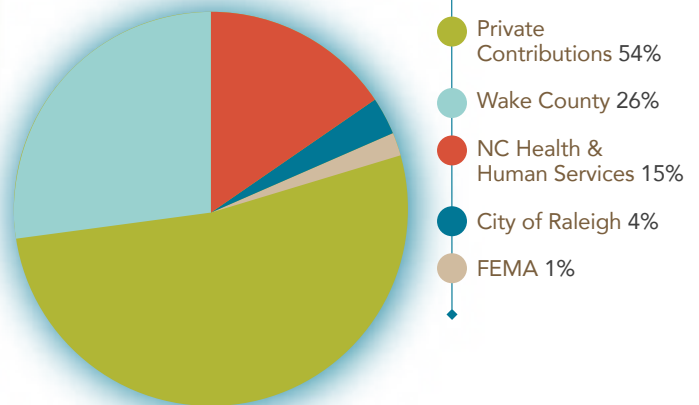
In the last seven years, we have increased our private revenue by 68%.



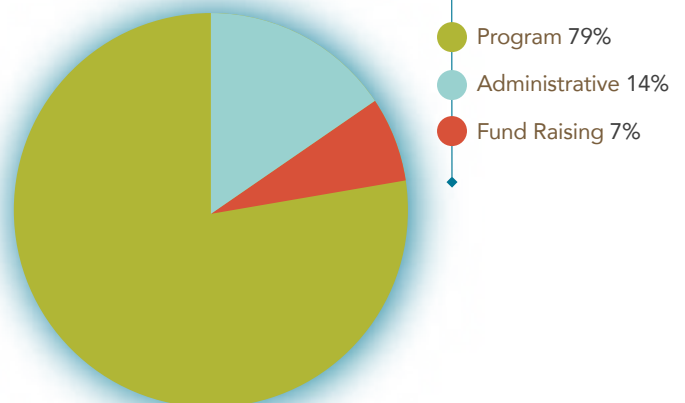
STATEMENT OF FINANCIAL POSITION

REVENUE \$884,309
EXPENSES \$811,212

2013-14 REVENUE



2013-14 EXPENSES



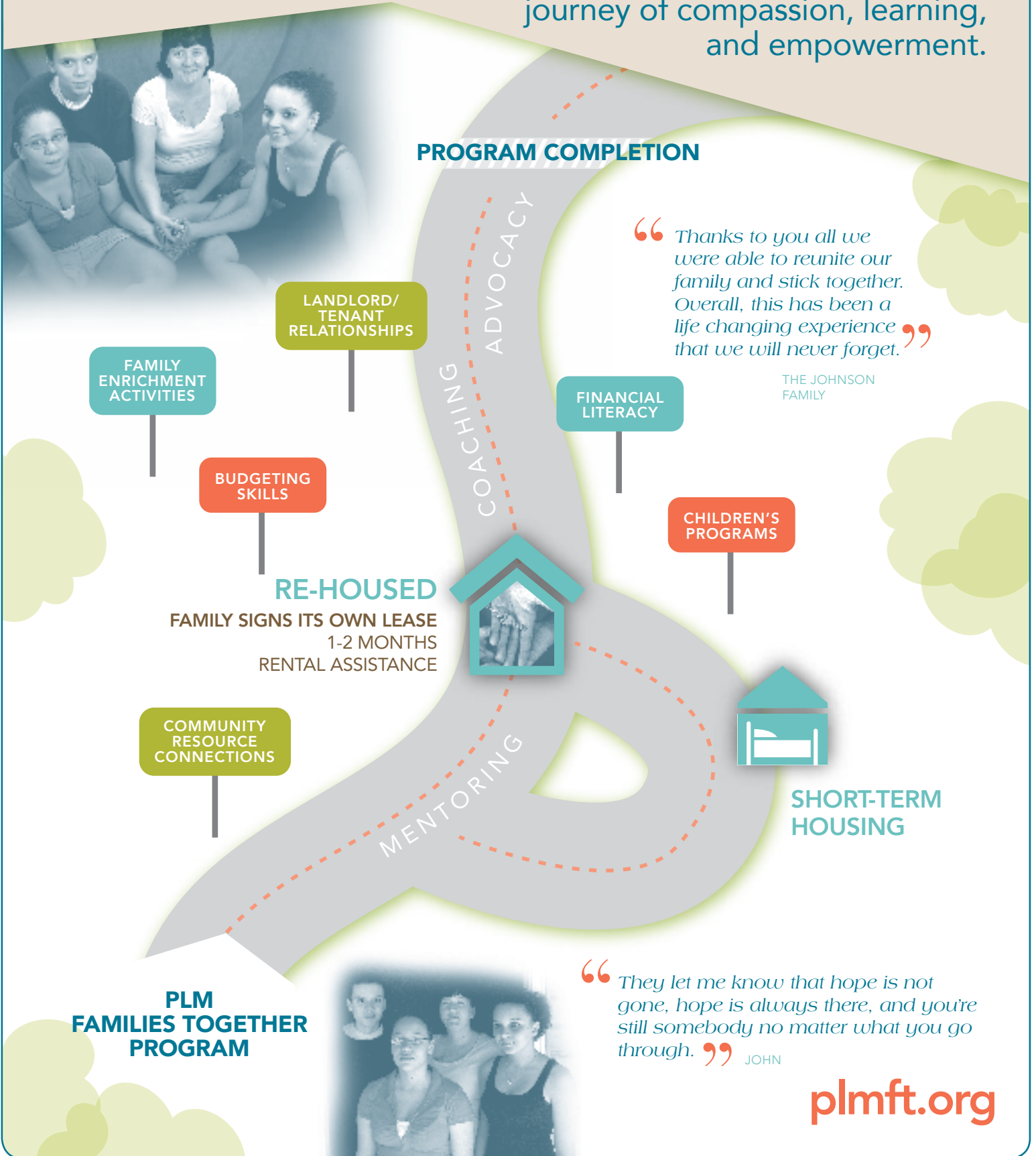
plmft.org



**Families
PLM Together**

We Believe

The road to independence is a journey of compassion, learning, and empowerment.



PROGRAM COMPLETION

“ Thanks to you all we were able to reunite our family and stick together. Overall, this has been a life changing experience that we will never forget. ”

THE JOHNSON FAMILY

FINANCIAL LITERACY

CHILDREN'S PROGRAMS

BUDGETING SKILLS

FAMILY ENRICHMENT ACTIVITIES

LANDLORD/TENANT RELATIONSHIPS

RE-HOUSED

FAMILY SIGNS ITS OWN LEASE
1-2 MONTHS
RENTAL ASSISTANCE

COMMUNITY RESOURCE CONNECTIONS

SHORT-TERM HOUSING

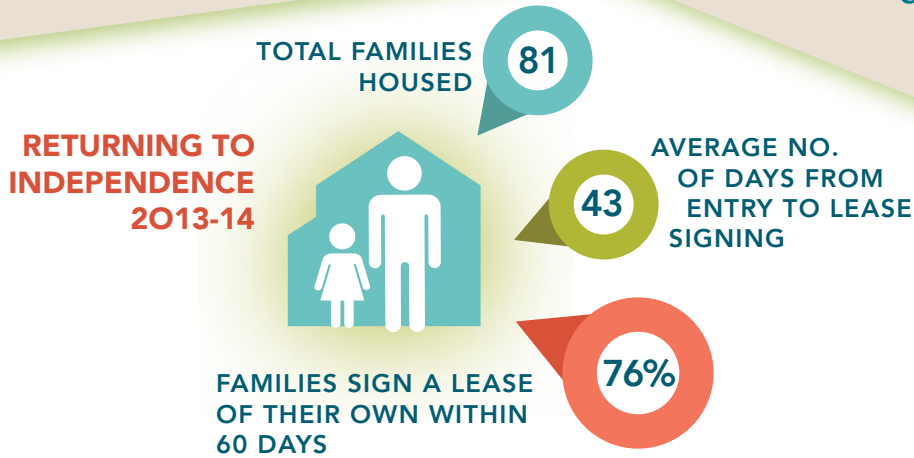
**PLM
FAMILIES TOGETHER
PROGRAM**

“ They let me know that hope is not gone, hope is always there, and you're still somebody no matter what you go through. ” JOHN

plmft.org

We Believe

Effectiveness and efficiency are the foundation of a healthy cutting-edge program.



“ I didn’t know what to expect at PLM Families Together, but it really made me feel like I had a second chance. ”

MARY



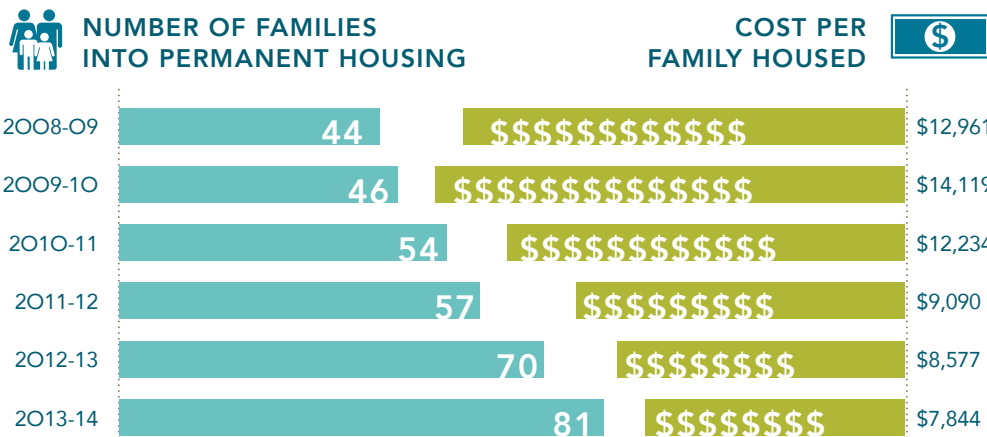
ACHIEVING STABILITY

83-86% of families remain housed at least 12 months beyond their lease date. (2008-09 through 2013-14)

“ It has always been a dream of mine to raise my children in a home they can call their own, and with the help of PLM Families Together, I can see this dream coming true. ”

SHARI

INCREASING OUTCOMES — LOWERING PROGRAM COSTS



39% REDUCTION

352 families lifted out of homelessness in the last six years
= **ONE FAMILY EVERY 6.2 DAYS**

Shaping the future

Strategic Goals For 2014 - 2017

Strengthen the PLMFT Brand

Utilize a market-driven approach to telling our story

Diversify and Grow Funding

Expand funding partners and broaden our donor base



Organize for Operational Excellence

Drive quality improvement and optimize resources



Broaden Community Impact

Establish PLMFT as leader in collaboration and widen program reach in Wake County

Optimize Asset Portfolio

Enhance use of real property

2013-14 BOARD OF DIRECTORS

Kathy Blum, *President*
John Davis, *Vice President*
Janet Monaghan, *Treasurer*
MaryJane Selgrade, *Secretary*

Joe Baden
Beth Chartrand
Dyretta Denkins
Pamela Denning
Helen Hauser
Julie Helmey
Katie Kingsbery
Mark Mantey

John Niffenegger
Knowles Parker
Vince Rozier
Becky Stanford
Ann Thomas
Machiel VanDyk
Alicia Williams

OUR MISSION

Moving Wake County families from homelessness to stable homes through mentoring, housing support and connecting to community resources

OUR VISION

No homeless families in Wake County

OUR VALUES

We value services that are empowering, inclusive, responsive, compassionate, family-driven, advocating, respectful, innovative, and show integrity.

VOLUNTEERS MAKING AN IMPACT IN 2013-14



*dollar value: \$44,520 (independentsector.org)

We Believe Neighbors helping neighbors strengthens the whole community.

"Serve the Homeless" Volleyball Tournament fundraising champion



“Volunteering at PLMFT has been such a rewarding experience. Bonding with the children while providing them with fun, enriching activities to do is amazing! They're learning from me and I'm learning from them as well.”

KELSEY BARBOUR