



LYNCH ALUMINUM PRODUCT CATALOG

Quality Products, First Class Service, Competitive Prices



We want to thank our customers for their loyalty through the years and our employees for their jobs well done. You have made doing business a pleasure and Lynch Aluminum a success!

800-383-3231

8810 N University St.
Peoria, IL. 61615



www.LynchAluminum.com





Family Owned & Operated

40 Years of Outstanding Service!

1967-1970 (Peoria, IL)



1970-1972 (Peoria, IL OFFICE)



1970-1972 (Peoria, IL MFG)



1973-1986 (DEER CREEK, IL MFG)



1974-1981 (BLOOMINGTON, IL LOCATION)



1972-1982 (PEORIA, IL LOCATION)



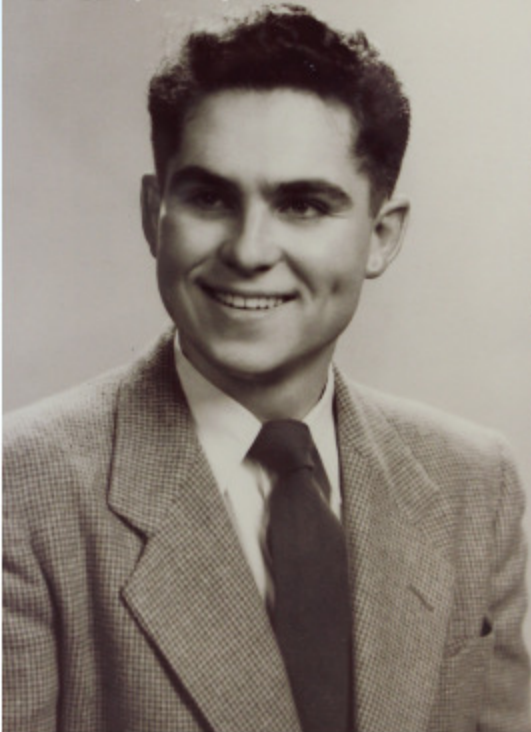
1982-PRESENT (PEORIA, IL LOCATION)



Lynch Aluminum, located in Peoria, IL has 40 years of experience serving the seamless gutter and trim industry. Our growing service area now encompasses 23 states in the Midwest, most of which receives weekly deliveries from our own fleet of trucks. Our reputation of dependable service is one that so many have come to know and appreciate through the years.

← 1970'S INSTALLATION ADVERTISEMENTS →

DALLAS LYNCH



FOUNDERS



DOROTHY LYNCH



SECOND GENERATION



ALL THREE GENERATIONS



FROM LEFT TO RIGHT: MATT LYNCH, COREY LYNCH, DAVID LYNCH, DALLAS LYNCH, DOROTHY LYNCH, KEN LYNCH, BRANDY LYNCH, JASON LYNCH

Lynch Aluminum has always prided itself on being a company that was built by installers for installers. Lynch was started in the 1950s as a "Mom and Pop" siding company that began in the garage of the founders, Dallas and Dorothy Lynch. Now on the third generation of Lynchs, the company still remains a family oriented establishment focused on the needs and concerns of its customers from the smallest of installation companies to large-scale distributors. From its humble beginnings, Lynch has grown to be a worldwide provider of rainware products and accessories with an ever-growing customer base. At Lynch Aluminum, it is easy to see why our customers have always been able to tell the difference!!

We're proud of the relationships we have built with our customers over the years. We credit this to our focus of offering them "Simply the Best", the best in products, service, and competitive pricing. Our facilities, machinery, equipment, and dedicated employees are all the result of this focus. The trust and loyalty of our customers deserves nothing but the best and their satisfaction continues to drive all that we do. Our success tells us that we're still doing it right!

1-800-383-3231

www.LynchAluminum.com



Consistent product quality

Our warehouse and distribution facilities occupy two buildings totalling 120,000 square feet. Our machines are fully automated, high production units that give us the two things most important to a business in manufacturing: Speed of operation to ensure adequate, available inventory, and an end product of superior and consistent quality.

Years of experience have gone into the methods we have developed for production, quality control, and material handling. We are very proud and welcome you to tour our facilities. We think you would find it both interesting and educational.



All coils are wrapped in cardboard to protect the roll from potential damage



Each elbow is individually bagged in plastic to keep the elbow free of dents and scratches



Each box of downspout has several layers of paper for maximum protection

Meet the Lynch Team

Officers



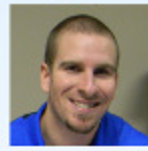
Ken L.



Wayne K.



Corey L.



Jason L.



Matt L.



Front Office



Jackie S.



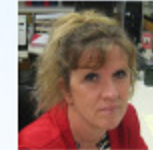
John M.



Amber W.



Brandy Y.



Debbie H.

Sales



Dan K.



Kerry Y.



Joel W.



Jace F.



Bob C.

Drivers



Cary H.



Bob F.



Martin B.



Jeremy G.



Jay M.



Dale E.



Terry W.

Warehouse



Tom W.



Dave L.



Todd H.



Terry S.



Kyle P.



Tyler D.



Mark A.

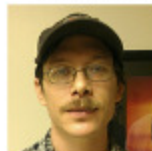


Chris P.

MFG



Lee K.



Andre L.



Gary T.



Dale R.



Rusty B.



Rick W.



Karen O.

Mechanic



Jon S.



Geoff G.



Rich H.



Gary M.

Electrician



Craig D.



Ray R.

Lynch Aluminum Mfg. Co. - Painted Rainware Products

LIMITED LIFETIME WARRANTY

Under normal and proper use and subject to the terms and conditions described in this warranty, Lynch Aluminum Mfg. Co. ("manufacturer") warrants to the property owner(s) ("owner"), named in this certificate, that its coated aluminum soffit panels, accessories, and rainware products ("product") is free from manufacturing defects and will not peel, check, chip, crack (except for such crazing or slight cracking as may occur on tightly roll-formed edges or brake bends and which is accepted as standard), blister, split, or flake, as a direct result of manufacturing defects.

This warranty does not cover damage of any kind resulting from improper use, improper installation, or fire, flood, ice, hail, storm, windborne objects, tornado, earthquake, or other acts of God, use of incompatible accessories, exposure to harmful materials or chemicals directly applied or in the atmosphere (including but not limited to, chemical fumes or salt spray and any corrosion resulting therefrom), falling objects, settlement of the building, failure of the structure, external forces, mildew accumulation, surface oxidation, normal weathering, damage to the product occasioned by moisture or other contamination (attributable to improper storage, handling, shipping, or processing), failure of owner to provide reasonable and necessary maintenance, or any other similar or dissimilar occurrences beyond the control of the manufacturer.

Color may change due to normal weathering, which is defined as exposure to ultraviolet sun light and extremes of weather and atmosphere causing any color or painted surface to fade, darken, chalk, or acquire a surface accumulation of dirt or stain, is excluded from this warranty.

This warranty shall remain in force for as long as the owner(s) named in this certificate shall live and own an interest in the property as identified herein. If more than one property owner is named, the warranty shall remain in force as long as at least one of the original property owners is living and owns an interest in the property. If the structure is owned by a corporation, an unincorporated association, or by a governmental or public entity, including without limitation a church or school, the warranty shall be fifty years from the date of installation. Warranty coverage is subject to the conditions, remedies, limitations, and legal rights set forth herein and is non-transferable or otherwise assignable.

The attached warranty registration card must be fully completed and returned to the manufacturer within thirty (30) days of installation or the initial purchase of a newly constructed commercial or residential structure, whichever is later, for the owner to be entitled to warranty coverage.

Claims under this warranty must be made in writing to the manufacturer within thirty (30) days of the date the defect is first discovered or reasonably could have been discovered. The manufacturer shall have a reasonable opportunity to inspect the product involved for defects and may request information or evidence concerning your claim.

If the product contains a defect covered by this warranty, the manufacturer, at its sole discretion, will either; a) pay for the cost of materials to repair or replace the product, b) provide a replacement product of equal quality or value as a substitute, or c) refund the purchase price of the product. In no event shall the manufacturer be obligated to pay for the cost of labor for such repair or maintenance. Since a color variance may occur between any new replacement panel or piece in comparison to the originally installed product due to normal weathering, this condition shall not be indicative of defective products.

Except as set forth herein, the manufacturer makes no other warranties with respect to the product, expressed or implied, and shall not be liable for any incidental, indirect, consequential, or special damages with respect to the products covered by this warranty. The manufacturer's complete liability and the owners exclusive remedies are limited to repair, replacement, or refund on the basis stated herein. This warranty shall apply only to the product shipped to and used within the Continental United States. All the foregoing conditions constitute material terms of this warranty and violation by the owner or its agents or representatives of any one or more conditions shall release the manufacturer of its obligations hereunder.

Some states do not allow the exclusion or limitation of incidental or consequential damages, so the above limitations may not apply to you. This warranty gives you specific legal rights, and you may have other rights with vary from state to state.

Table of Contents

1) Downspout	7) Bay Miters	12) Connectors
2) Elbows	8) Outlets	12) Hinges
3) KwikFlip	8) Brackets/Hangers	12) Barnetts Valley Controller
3) Convert-A-Bow	9) Endcaps	13) Speed Screen®
3) Brickledge Offsets	9) Screws	13) Drop-In Gutter Guard
4) Gutter Coil	9) Pop Rivets	13) Small Hole Speed Screen
4) Mini/Junior Coil	9) Nails	14) Leaf Relief®
4) Trim Coil	10) Paint Cans	14) EZ-Lock Gutter Guard
4) Flashing Coil	10) Ferrules	15) Leaf Exterminator™
5) Soffit	10) Splash Guard	15) Leafproof®
6) Channel	10) Wedges	15) Leafproof® Accessories
6) Fascia	10) Funnel	15) Klynch Channel
6) Roof Edge	10) Diverters	16) Tools & Accessories
6) Drip Edge	11) Sealant	17 & 18) Gutter Machines
7) Saddles	11) Strainers	19) Klynch Channel Info
7) Pipebands	11) Hook Straps	20) Speed Screen Info
7) Box Miters	11) Grip-Tite Spikes	21) KwikFlip Info
7) Strip Miters	11) Tile Adapters	

Color Legend

HG: High Gloss 80° White

LG: Low Gloss 30° White

LN: Linen

AL: Almond

IV: Antique Ivory

CC: Classic Cream

WK: Wicker

CY: Clay

PG: Pearl Gray

BZ: Terratone Bronze

RW: Rosewood

RB: Royal Brown

MB: Musket Brown

GG: Grecian Green

TG: Tuxedo Gray

BL: Black

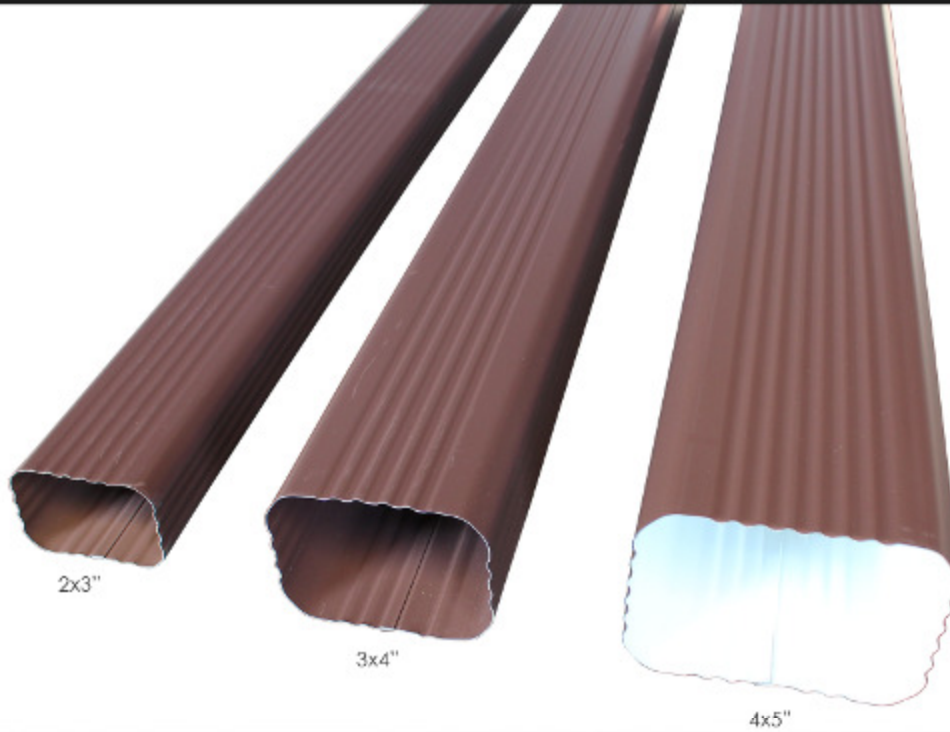
CH: Charcoal
(Leafproof Only)

Color cards and metal chips are available upon request. Please contact your sales person.





Aluminum Downspout



8' Downspout

- 2x3" Painted Aluminum Downspout (.019)
- 3x4" Painted Aluminum Downspout (.019)
- 3x4" Painted Aluminum Downspout (.024)

Colors Available

- All Colors
- HG, LG, IV, CC, WK, CY, PG, BZ, RB, MB, TG, BL
- HG, LG, IV, CC, WK, CY, PG, BZ, RB, MB, BL

10' Downspout

- 2x3" Painted Aluminum Downspout (.019)
- 3x4" Painted Aluminum Downspout (.019)
- 3x4" Painted Aluminum Downspout (.024)
- 4x5" Painted Aluminum Downspout (.027) 60'/box

- All Colors
- All Colors
- All Colors
- LG, AL, CC, WK, CY, GG, PG, BZ, RB, MB, BL

11' Downspout (No Crimp) 110'/box

- 2x3" Painted Aluminum Downspout (.019)
- 3x4" Painted Aluminum Downspout (.024)

- HG, LG, IV, CC, WK, CY, PG, BZ, RB, MB, BL, LN, GG, AL
- LG, CY, RB



Elbows

2x3" Elbows

- 2x3" A's Elbows @50 Count (.019)
- 2x3" B's Elbows @50 Count (.019)
- 2x3" A's Elbows @30 Count (.019)
- 2x3" B's Elbows @30 Count (.019)
- 2x3" A's 45° Elbows @25 Count (.019)
- 2x3" B's 45° Elbows @25 Count (.019)



Colors Available

- LG, RB, CY, HG
- LG, RB, CY, HG
- All Colors
- All Colors
- LG, RB, CY, HG
- LG, RB, CY, HG

3x4" Elbows

- 3x4" A's Elbows @25 Count (.019)
- 3x4" B's Elbows @20 Count (.019)
- 3x4" A's Elbows @25 Count (.024)
- 3x4" B's Elbows @20 Count (.024)
- 3x4" A's 45° Elbows @20 Count (.019)
- 3x4" B's 45° Elbows @20 Count (.019)



- All Colors
- All Colors
- All Colors
- All Colors
- LG, RB, CY, HG
- LG, RB, CY, HG

4x5" Elbows

- 4x5" A's Elbows @9 Count (.027)
- 4x5" B's Elbows @9 Count (.027)



- LG, AL, CC, WK, CY, PG, BZ, RB, MB, GG, BL
- LG, AL, CC, WK, CY, PG, BZ, RB, MB, GG, BL



KwikFlip/Convert-A-Bow/Brick Offset

KwikFlip (for more information, see page 21)

KwikFlip 2x3" "A" @12 Count

KwikFlip 2x3" "B" @12 Count

KwikFlip 3x4" "A" @12 Count

KwikFlip 3x4" "B" @12 Count

Colors Available

All Colors

All Colors

All Colors

All Colors

Convert-A-Bow

Convert-A-Bow 2x3" @12 Count

Convert-A-Bow 3x4" @12 Count

All Colors

All Colors

Brickledge Offset (2 piece)

2x3" 45° Offset @12 Count (.019)

3x4" 45° Offset @8 Count (.019)

4x5" 45° Offset @6 Count (.027)

All Colors

All Colors

LG



KwikFlip



Convert-A-Bow
Converts "B" elbow
into an "A" elbow



Brick Offset (2 piece)



Aluminum Gutter Coil/Trim Coil/Mini-Junior Rolls



Gutter Coil



Mini Roll



24" Trim Coil



18" Trim Coil



13 3/4" Trim Coil



Flashing Coil

Gutter Coil

- .027x11 3/4" Coil (Weight & Length Varies)
- .032x11 3/4" Coil (Weight & Length Varies)
- .027x15" Coil (Weight & Length Varies)
- .032x15" Coil (Weight & Length Varies)
- .032x18" Coil (Weight & Length Varies)

Colors Available

All Colors

All Colors

HG, LG, AL, IV, CC, WK, CY, PG, BZ, RB, MB, GG, BL

All Colors

LG, BR

Mini Coil

- .027x11 3/4" Mini @150'
- .032x11 3/4" Mini @150'
- .027x15" Mini @120'
- .032x15" Mini @120'

All Colors

All Colors

HG, LG, AL, IV, CC, WK, CY, PG, BZ, RB, MB, GG, BL

All Colors

Junior Coil

- .027x11 3/4" Junior @75'
- .032x11 3/4" Junior @75'
- .027x15" Junior @75'
- .032x15" Junior @75'

All Colors

All Colors

HG, LG, AL, IV, CC, WK, CY, PG, BZ, RB, MB, GG, BL

All Colors

Trim Coil

- 13x3/4" Trim Coil @50'
- 18" Trim Coil @50'
- 24" Trim Coil @50'
- 2 1/4" Flashing Coil @270'

LG, LN, AL, IV, CC, WK, CY, PG, BZ, RW, RB, MB, GG, TG, BL

LG, RB, BL, IV

LG, LN, AL, IV, CC, WK, CY, PG, BZ, RW, RB, MB, GG, TG, BL

LG, CY, RB, BZ, Mill Finish



Soffit

Soffit

Colors Available

CVP-12" Soffit 12' @16 Count

LG, LN, AL, IV, CC, WK, CY, PG, BZ, RB, MB, GG, BL, TG, RW

SVP-12" Soffit 12' @16 Count

LG, LN, AL, IV, CC, WK, CY, PG, BZ, RB, MB, GG, BL, TG, RW

12" Tri-4 Vent 12' @16 Count

LG, IV, CC, WK, CY, PG, BZ, RB, MB

12" Tri-4 Solid 12' @16 Count

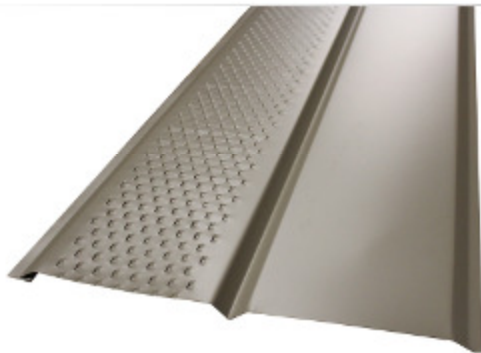
LG, IV, CC, WK, CY, PG, BZ, RB, MB

16" Quad Vent 12' @12 Count

LG, LN, AL, IV, CC, WK, CY, PG, BZ, RB, MB, GG, BL, TG, RW

16" Quad Solid 12' @12 Count

LG, LN, AL, IV, CC, WK, CY, PG, BZ, RB, MB, GG, BL, TG, RW



12" Old Style Vented



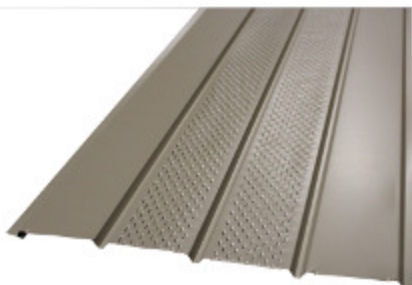
12" Old Style Solid



12" Tri Vented



12" Tri Solid



16" Quad Vented



16" Quad Solid



Fascia/Channel/Roof & Drip Edge



6" Fascia

8" Fascia

10" Fascia

Fascia

6" L-Fascia 12' (.019) @25 Count

LG, LN, AL, IV, CC, WK, CY, PG, BZ, RB, MB, GG, BL, TG, RW

8" L-Fascia 12' (.019) @25 Count

LG, LN, AL, IV, CC, WK, CY, PG, BZ, RB, MB, GG, BL, TG, RW

10" L-Fascia 12' (.019) @25 Count

LG, RB

Channel

1/2" F-Channel 12' @25 Count

LG, LN, AL, IV, CC, WK, CY, PG,
BZ, RB, MB, GG, BL, TG, RW

1/2" J-Channel 12' @50 Count

J Channel

LG, LN, AL, IV, CC, WK, CY, PG,
BZ, RB, MB, GG, BL, TG, RW

3/8" F-Channel 12' @25 Count

F Channel

LG, LN, AL, IV, CC, WK, CY, PG,
BZ, RB, MB, GG, BL, TG, RW

3/8" J-Channel 12' @50 Count

LG, LN, AL, IV, CC, WK, CY, PG,
BZ, RB, MB, GG, BL, TG, RW

Roof & Drip Edge

1 1/2"x3" Roof Edge 12' @50 Count

LG, LN, AL, IV, CC, WK, CY, PG,
BZ, RB, MB, GG, BL, TG, RW

3x2" Drip Edge 12' @50 Count

Roof Edge

Drip Edge

LG, LN, AL, IV, CC, WK, CY, PG,
BZ, RB, MB, GG, BL, TG, RW



Saddles/Pipebands/Miters

Saddles

2x3" Saddle @100 Count

3x4" Saddle @50 Count



Colors Available

All Colors

All Colors

Pipebands

2x3" Standard/Ornamental Pipeband @100 Count

3x4" Standard/Ornamental Pipeband @100 Count

HG, LG, AL, IV, CC, WK, CY, PG, BZ, RB, MB, GG, TG, BL

All Colors

Box Miters

5" I/S Box Miter @20 Count

5" O/S Box Miter @20 Count

6" I/S Box Miter @20 Count

6" O/S Box Miter @20 Count



All Colors

All Colors

All Colors

All Colors

Strip Miters

5" I/S Strip Miter @20 Count

5" O/S Strip Miter @20 Count

6" I/S Strip Miter @20 Count

6" O/S Strip Miter @20 Count

7" I/S Strip Miter @20 Count

7" O/S Strip Miter @20 Count



All Colors

All Colors

All Colors

All Colors

LG

LG

Bay Miters

5" I/S Bay Miter @20 Count

5" O/S Bay Miter @20 Count

6" I/S Bay Miter @20 Count

6" O/S Bay Miter @20 Count



All Colors

All Colors

LG, RB, CY

LG, RB, CY



Outlets/Brackets/Hangers

Outlets

- 2 3/4" Pop-In Outlet @50 & 250 Count
- 2 3/8" Pop-In Outlet @50 & 250 Count
- 3 3/8" Pop-In Outlet @100 Count
- 2x3" B-Flange @30 & 200 Count
- 3x4" B-Flange @50 Count
- 4x5" B-Flange (Sold By The Piece)
- 4" Oval Outlet @60 Count



Colors Available

- Mill Finish
- Mill Finish
- Mill Finish
- Mill Finish
- Mill Finish
- Mill Finish
- Mill Finish

Brackets/Hangers

- 5" Brute™ W/Clip @500 Count
- 5" Brute™ NO/Clip @500 Count
- 6" Brute™ W/Clip @300 Count
- 6" Brute™ NO/Clip @300 Count
- 5" Standard W/Clip @500 Count
- 5" Standard NO/Clip @500 Count
- 5" Quickscrew W/Clip @500 Count
- 6" Quickscrew W/Clip @300 Count
- 7" Quickscrew W/Clip @100 Count
- 5" Raytec Hangtite™ W/Clip @1,000 Count
- 5" Raytec Hangtite™ NO/Clip @1,000 Count
- 6" Raytec Hangtite™ W/Clip @1,000 Count
- 6" Raytec Hangtite™ NO/Clip @1,000 Count
- 5" Raytec Hangfast™ W/Clip @500 Count
- 6" Raytec Hangfast™ W/Clip @500 Count
- 5" Wrap Around Hanger @100 Count
- 6" Wrap Around Hanger @100 Count



- Mill Finish
- Mill Finish
- Mill Finish
- Mill Finish
- Mill Finish
- Mill Finish
- Mill Finish
- Mill Finish
- Mill Finish
- Mill Finish
- Mill Finish
- Mill Finish
- Mill Finish
- Mill Finish
- Mill Finish

HG, LG, IV, RB, BL

HG, RB



End Caps/Screws/Pop Rivets/Nails



Left

Right

End Caps

- 5" L/R End Cap @50 Count
- 6" L/R End Cap @50 Count
- 7" L/R End Cap @50 Count



Pop Rivets



- All Colors
- All Colors
- LG

Screws

#6x3/8" Painted Screws @1,000ct. box & (18,000 Count In Lg Only)

LG, LN, AL, IV, CC, WK, CY, PG, BZ, RW, RB, MB, GG, TG, BL

#8x1/2" Painted Screws @100(bag), 1,000ct. box & (15,000 Count In LG & RB Only)

LG, LN, AL, IV, CC, WK, CY, PG, BZ, RB, MB, GG, TG, BL

#8x1/2" Hex Head Screws (STL STEEL) @1,000 Count

LG, LN, AL, IV, CC, WK, CY, PG, BZ, RW, RB, MB, GG, TG, BL

#9x1 1/2" Neoprene Screws @2,500 Count

Mill Finish

#10x1 1/2" Screws (Mill Finish) @250 & 2,500 Count

Mill Finish

#10x1 1/2" Screws (Stainless Steel) @2,500 Count

Stainless Steel

#10x2" Screws (Mill Finish) @2,000 Count

Mill Finish

#10x3" Screws @250 Count

Mill Finish

#10x5" Pole Barn Screws @100 Count

Mill Finish

Pop Rivets

Pop Rivets @100(bag) & 1,000 Count

LG, LN, AL, IV, CC, WK, CY, PG, BZ, RW, RB, MB, GG, TG, BL

Nails

1 1/4" Stainless Steel Trim Nails @1 Pound Boxes

LG, LN, AL, IV, CC, WK, CY, PG, BZ, RW, RB, MB, GG, TG, BL

2" Spiral Gutter Bracket Nail @50 Pound Boxes

Mill Finish

2 1/2" Spiral Gutter Bracket Nail @50 Pound Boxes

Mill Finish



Paint/Ferrules/Splash Guard/Wedges/Funnels/Diverter

Paint Cans

12oz. Spray Paint Can



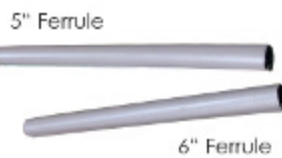
Colors Available

All Colors

Ferrules

5" Inner Ferrule (.024) @500 Count

6" Inner Ferrule (.024) @500 Count



Washcoat

Washcoat

Splash Guard

Splash Guard @10 Count



LG, IV, CC, WK, CY, PG, BZ, RB, MB, BL

Wedges

5" Standard Gutter Wedges @100 Count

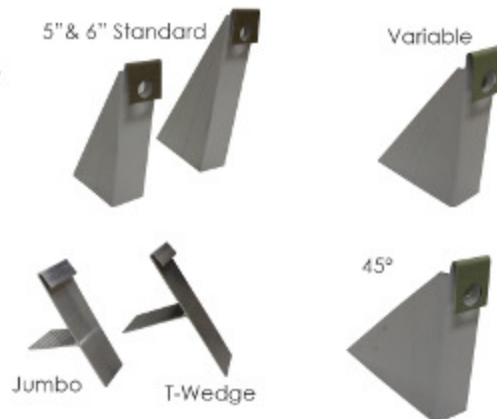
6" Standard Gutter Wedges @50 Count

5" Variable Wedges @100 Count

45° Wedge @100 Count

T-Wedges @50 Count

Jumbo T-Wedges @50 Count



LG, RB

LG

LG

LG

Mill Finish

Mill Finish

Funnels

2x3" Funnels @12 Count

3x4" Funnels @12 Count



LG, RB

LG, RB

Diverter

2x3" Diverter @10 Count

3x4" Diverter @6 Count



LG, CY, RB

LG, CY, RB



Sealant/Strainers/Hook Straps/Spikes/Tile Adapters



Sealant

Colors Available

- | | |
|---|-------------------|
| (1) Ultra Silicone Sealant @12 Count | LG, Clear |
| (2) Geocel 2320 Sealant @24 Count | LG, Silver, Clear |
| (3) OSI Gutter Mastic @12 Count (VOC) | LG |
| (4) 12-1 Seamsealer @12 Count (Winter Blend) | Silver |
| (5) 12-3 Self Leveling Sealant @12 Count (Summer Blend) | Silver |
| (6) Ruscoe #2 Seamsealer @12 Count (Summer Blend) | Silver |
| (7) Ruscoe #1 Seamsealer @12 Count (Winter Blend) | Silver |
| (8) 5oz. Tube Gutter Sealant (OSI) @24 Count (VOC) | LG |
| (9) 4oz. Tube Gutter Sealant @12 Count | Silver |
| (10) Ruscoe Self Leveling Permanent Sealer @24 Count | Silver |

Strainers

3" & 4" Basket Strainers @48 Count



Mill Finish

Hook Straps

Hook Straps @100 Count



Mill Finish

T-Straps @100 Count

Mill Finish

Grip-tite Spikes

7" Grip-tite Spike (Ring Shank) @500 Count



AL, BL, CY, IV, LN, LG, RB

8" Grip-tite Spike (Ring Shank) @500 Count

LG, RB, PG, WK, CY, IV, MBR

Tile Adapters

2"x3"x4" Tile Adapter (Sold by the piece)

3"x4"x4" Tile Adapter (Sold by the piece)

4"x6"x6" Tile Adapter (Sold by the piece)



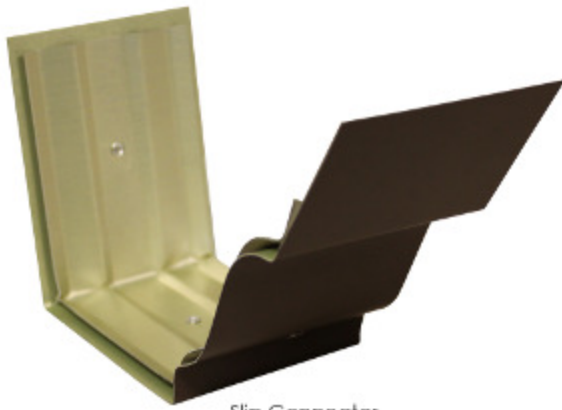
Black

Black

Black



Connectors/Hinges/Valley Controller



Slip Connector



Neoprene Connector

Connectors

5" Slip Connector @50 Count

HG, LG, RB

5" Neoprene Connector @12 Count

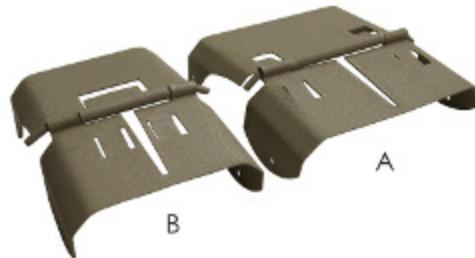
Mill Finish

6" Neoprene Connector @12 Count

Mill Finish

Hinges

2x3" A-B Hinge @12 Count



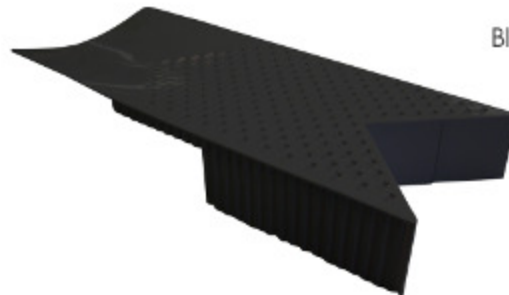
LG, RB, CY

3x4" A-B Hinge @12 Count

LG, RB, CY

Valley Controller

Barnetts Valley Controller (sold by the piece)



Black



The Valley Controller eliminates the need for a splash diverter and is designed to take maximum advantage of three things present on your roof, wind, water (and the properties of water)



Speed Screen®/Drop-In Gutter Guard



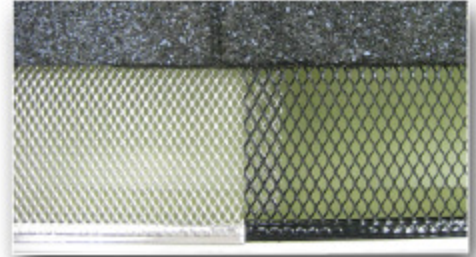
Speed Screen
Mill Finish & Powder Coated



Drop In
Mill Finish

Small Hole
5/32"

Standard
1/4"



Speed Screen (See page 20 for more information)

- 5" Speed Screen® 4' Length @200'
- 6" Speed Screen® 4' Length @200'
- 5" Speed Screen® Elite 4' Length @100'
- 6" Speed Screen® Elite 4' Length @100'
- 5" Small Hole Speed Screen® 4' Length @200'
- 6" Small Hole Speed Screen® 4' Length @200'
- 5" Small Hole Speed Screen® Elite 4' Length @100'
- 6" Small Hole Speed Screen® Elite 4' Length @100'

Colors Available

- Mill Finish
- Mill Finish
- Black Powder Coated
- Black Powder Coated
- Mill Finish
- Mill Finish
- Black Powder Coated
- Black Powder Coated

Drop-In

- 5" Drop-In Gutter Guard 4' Length @200' Mill Finish
- 6" Drop-In Gutter Guard 4' Length @200' Mill Finish
- 7" Drop-In Gutter Guard 4' Length @200' Mill Finish
- 5" Small Hole Drop-In Gutter Guard 4' Length @200' Mill Finish
- 6" Small Hole Drop-In Gutter Guard 4' Length @200' Mill Finish
- 5" Small Hole Drop-In Gutter Guard Elite 4' Length @100' Black Powder Coated
- 6" Small Hole Drop-In Gutter Guard Elite 4' Length @100' Black Powder Coated



Leafproof®/Leaf Exterminator™



Leafproof® & Accessories

- Standard Leafproof® @100'
- XP Leafproof® @100'
- L/R Leafproof® Endcaps @25 Count (each box)
- 1/S Leafproof® Corner @10 Count
- Leafproof® Splash Diverter @10 Count
- 5" Leaf Exterminator™ 6' Pieces @50 Count *
- 6" Leaf Exterminator™ 6' Pieces @50 Count *



Colors Available

- LG, CC, WK, CY, PG, BZ, RB, MB, GG, CH, BL
- LG, CC, WK, CY, PG, BZ, RB, MB, GG, CH, BL
- LG, CC, WK, CY, PG, BZ, RB, MB, GG, CH, BL
- LG, CC, WK, CY, PG, BZ, RB, MB, GG, CH, BL
- LG, CC, WK, CY, PG, BZ, RB, MB, GG, CH, BL
- BL, LG
- BL, LG

* Leaf Exterminator™ is a fully enclosed gutter protection that fits new or existing gutters. The unique, Micro-Pore filtration is designed to prevent leaves, seeds, pine needles, and all other debris from entering your gutters. The only thing that can pass through the system is rainwater.



Klynch Channel

(See page 19 for more information)



Colors Available

Klynch Channel - 150' per box (20pcs @ 7'6" sections)

LG, CY, BL, Mill Finish



Tools & Accessories



Assorted Tools

(1) Ladder Max Stand Off

(2) Ladder Max Multi Pro

(3) Ladder Max Leveler Set

(4) Ladder Max Base Unit Ladder Leveler

(5) Kabonger Nail Set

(6) 1/8" Drill Bit

(7) 1/4" Head Magnetic Nut Driver 1 3/4", 4", 6", & 8"

(8) Downspout Crimper

(9) Endcap Crimper

(10) Holesaw W/Pilot Bit 2 3/8"

(11) Holesaw W/Pilot Bit 2 3/4"

(12) Holesaw W/Pilot Bit 3 3/8"

(13) 2-in-1 Pop Rivet Gun

(14) X-Lite Caulking Gun

(15) Newborn Caulking Gun

(16) Newborn Gator Trigger Caulking Gun

(17) 1/2" Tesa Tape

(18) Electricians Hammer (For Bracket Nailing)

(19) Utility Knife

(20) Malco Main Frame

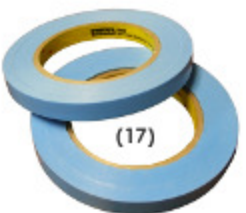
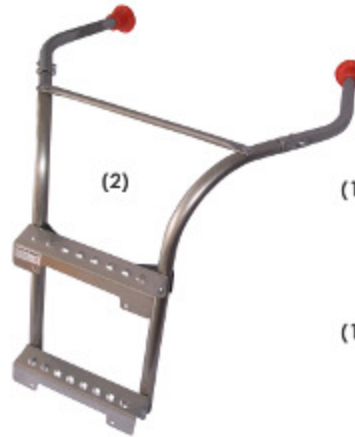
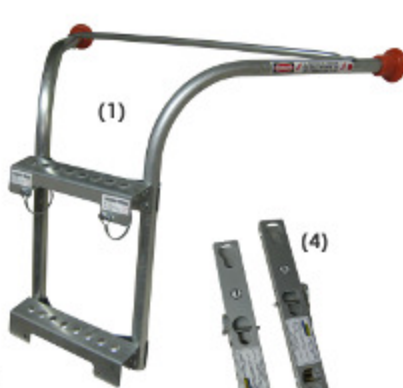
(21) Malco Outlet Punches (X-Punch, 2x3", 3x4")

(22) Turboshear HD

(23) Andy Snips

(24) Economy Pop Rivet Gun

(25) 3 Aviator Snips





We have a wide variety of gutter machines and accessories on hand. From 5", 6" and 7" machines to roll out stands, we have it!

Give us a call today for more information.



Ironman 5" Seamless Rollformer (Junior Also Available)

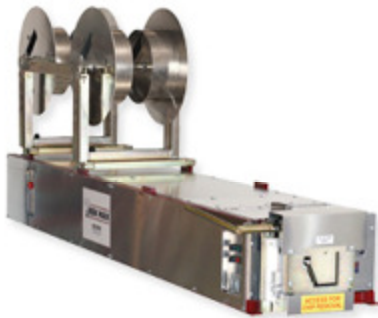
Polyurethane Drive Train

.002 Hard Chrome Plated Steel Forming Rollers

Electrical and Control System

Push button entry and exit end controls with safety wiring and "jog" feature
3/4 HP, 110 volt, single phase motor, 13.6 ampere

*Specs: 5" Machine (98.5"x48"x24"w - 1,100 lbs.)
5" Junior Machine (81"x48"x24"w - 686 lbs.)*



Ironman 6" Seamless Rollformer (Junior Also Available)

Polyurethane Drive Train

.002 Hard Chrome Plated Steel Forming Rollers

Electrical and Control System

Push button entry and exit end controls with safety wiring and "jog" feature
3/4 HP, 110 volt, single phase motor, 13.6 ampere

*Specs: 6" Machine (122"x48"x24"w - 1,300 lbs.)
6" Junior Machine (107.5"x48"x24"w - 960 lbs.)*



Panther 5" Seamless Rollformer

Standard equipment includes:

Front pull guillotine, seven station aluminum box, emergency shutdown switch, easy adjust entrance guides, two quick release runout stands.

2 spool turnstile upright & 2 aluminum spools less than half the weight of steel spools, modular upright system that distributes the weight of the coils to the floor of the vehicle, not the machine, coil tension brake, and transfer bar.

Specs: 5" Machine (96"x46"x23"w - 1,200 lbs.)



Panther 6" Seamless Rollformer

Standard equipment includes:

Front pull guillotine, seven station aluminum box, emergency shutdown switch, easy adjust entrance guides, two quick release runout stands.

2 spool turnstile upright & 2 aluminum spools less than half the weight of steel spools, modular upright system that distributes the weight of the coils to the floor of the vehicle, not the machine, coil tension brake, and transfer bar.

Specs: 6" Machine (127"x52"x25"w - 1,200 lbs.)



Ironman 5-6" Combo Seamless Rollformer

Polyurethane Drive Train

.002 Hard Chrome Plated Steel Forming Rollers

Electrical and Control System

Push button entry and exit end controls with safety wiring and "jog" feature
3/4 HP, 110 volt, single phase motor, 13.6 ampere

Specs: 5-6" Combo Machine (122"x48"x24"w - 1,400 lbs.)



Ironman 5-6" Junior Combo Seamless Rollformer

Polyurethane Drive Train

.002 Hard Chrome Plated Steel Forming Rollers

Electrical and Control System

Push button entry and exit end controls with safety wiring and "jog" feature
3/4 HP, 110 volt, single phase motor, 13.6 ampere

Specs: 5-6" Junior Combo Machine (107.5"x48"x24"w - 1,075lbs.)



Ironman 7" Seamless Rollformer

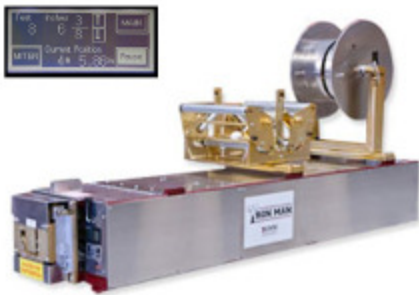
Polyurethane Drive Train

.002 Hard Chrome Plated Steel Forming Rollers

Electrical and Control System

Push button entry and exit end controls with safety wiring and "jog" feature
3/4 HP, 110 volt, single phase motor, 13.6 ampere

Specs: 7" Machine (168"x48"x24"w - 1,300 lbs.)



Next Generation Smart Machine

Let the IronMan Next Generation Smart Machine do the work for you by controlling gutter lengths plus or minus 1/8" without manually measuring!

With a touch of the screen, the Ironman Next Generation Smart Machine will automatically add for miters, if applicable, and keep a total of the daily material ran and the total footage. Activate the password protection feature and you'll be assured only authorized personnel will be able to operate the machine.



Call us for more information at 800-383-3231

Velcro Runout Stand



Deluxe Runout Stand



Small Coil Cradle



Coil Spool



Works On All Roof Types

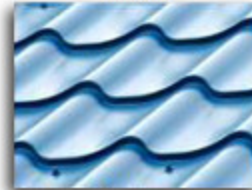
Asphalt



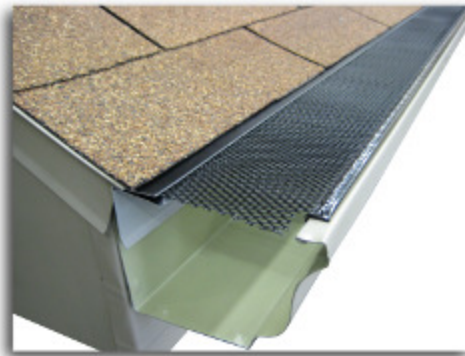
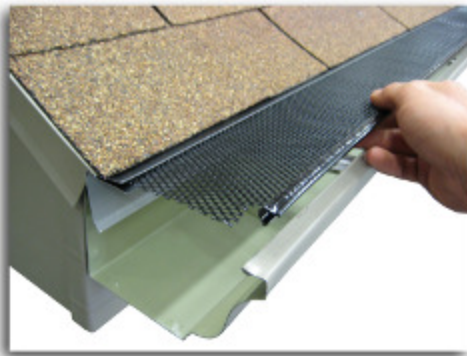
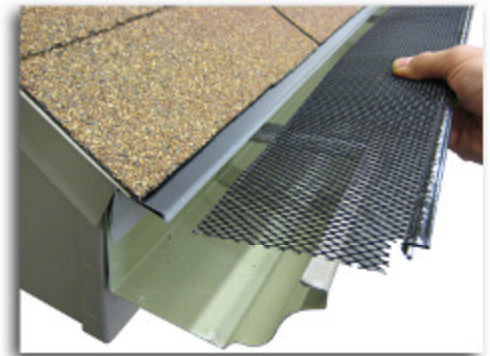
Wood Shake



Metal



Ceramic



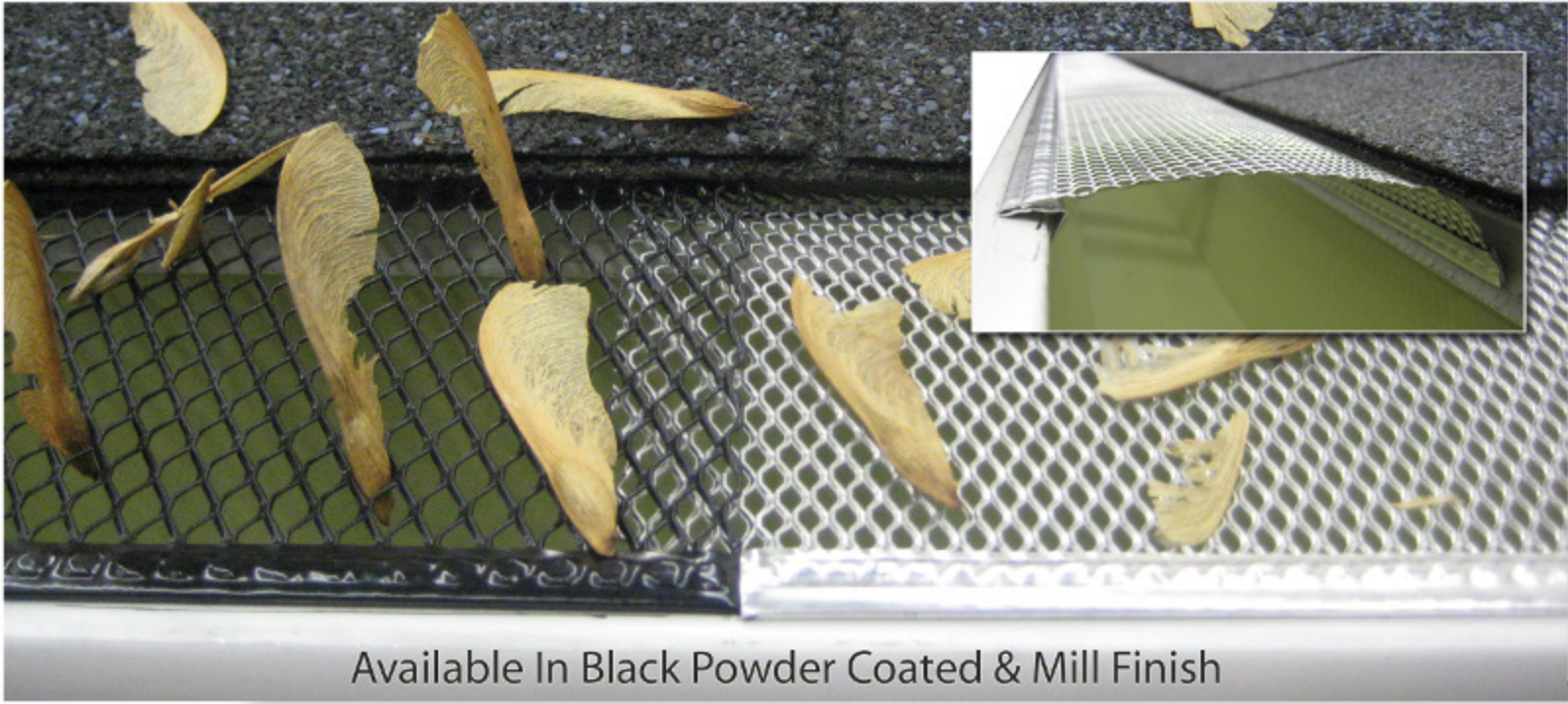
Not all applications require material to be cut or altered.

Try using the TurboShear HD from Malco Tool. This shear makes easy work of trimming any gutter protection up to .060 gauge. The TurboShear HD fits on any cordless drill. The TurboShear HD is available at Lynch Aluminum for only \$89.

- Attaches to the fascia or drip edge so roofing material is not disturbed
- Allows gutter protection to be installed on all roof types. i.e. slate, metal, tile, ceramic
- Manufactured from .019 gauge aluminum adding strength to the gutter protection installed
- Roll formed for superior strength and consistency
- Channel accepts all types of gutter protection from screens to solid covers
- Convenient 7' 6" section installs easily and can even be shipped via UPS
- Klynch allows standard gutter protection to be installed on 7" gutters
- Virtually invisible from the ground
- Available in White, Black, and Clay
- 150' boxes provide enough Klynch to do the average home
- Manufactured in the USA by Lynch Aluminum MFG Co.

SPEED SCREEN™

Same Product. More Protection!



Available In Black Powder Coated & Mill Finish

It's A SNAP!

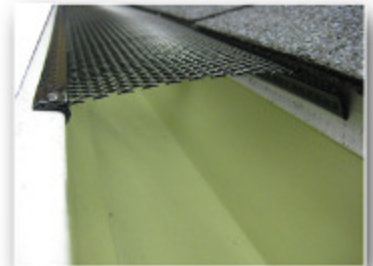
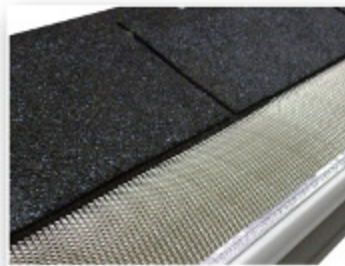
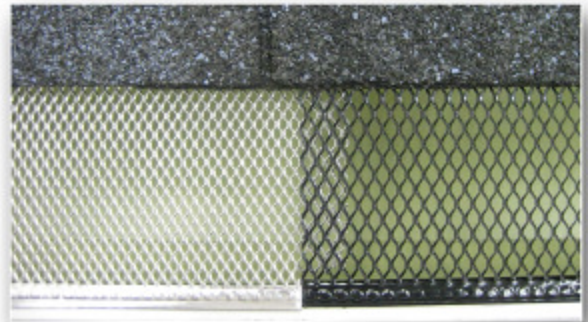
We are proud to introduce, Speed Screen™, an all aluminum gutter screen that requires no screws and no lifting of shingles to install. You simply place the back of the screen inside the gutter, on top of the gutter brackets, then compress to spring load the screen and snap it into place. It's That Easy!

- > Pre-notched for overlaps
 - > All aluminum - no rust
 - > Sizes for 5" & 6" gutters
 - > 4' sections for fast installation
 - > Spring-like tension holds screen securely in place
 - > Reinforced edge provides strength & support between hangers
 - > Simply sits on top of the gutter brackets and snaps into place
 - > No screws and no shingles to deal with
 - > Low profile design allows debris to blow off easily
 - > Virtually invisible from the ground
 - > Proudly made in the USA
- Speed Screen™ is sold per box. 4' sections @ 50 pcs per box (200' per box)
 - Speed Screen™ Elite is sold per box. 4' sections @ 25 peices per box (100' per box)

For bulk orders, please contact our sales team and they will further assist you.

Small Hole
5/32"

Standard
1/4"



Kwik FLIP

The Hidden Hinge

Tired of battling the same old problems with hinges or assemblies made of plastic, painted steel, special pins, screws, or rivets? Fed up with the unattractive plastic clips and Velcro used to hold the downspout up? Sick of the expense associated with all of the above?

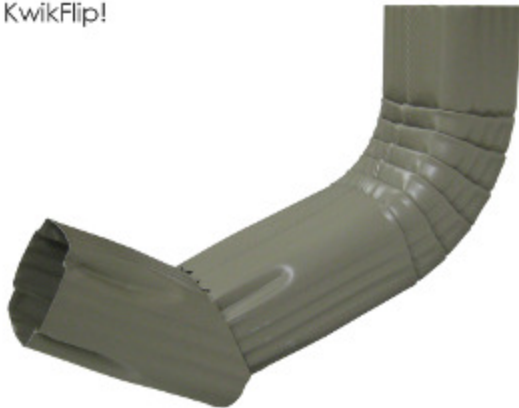
The KwikFlip eliminates all of that!

US PATENT 8,322,083

KwikFlip comes completely assembled and ready to install. Simply slip the KwikFlip elbow on the home's existing downspout and screw in place as you normally would. Next, slide the length of downspout on to the other end that you need to disperse the water away from the home. Installation complete!


The KwikFlip elbow is manufactured with extended length so the downspout angles back towards the house when raised.

There are no additional labor costs involved with installing the KwikFlip!

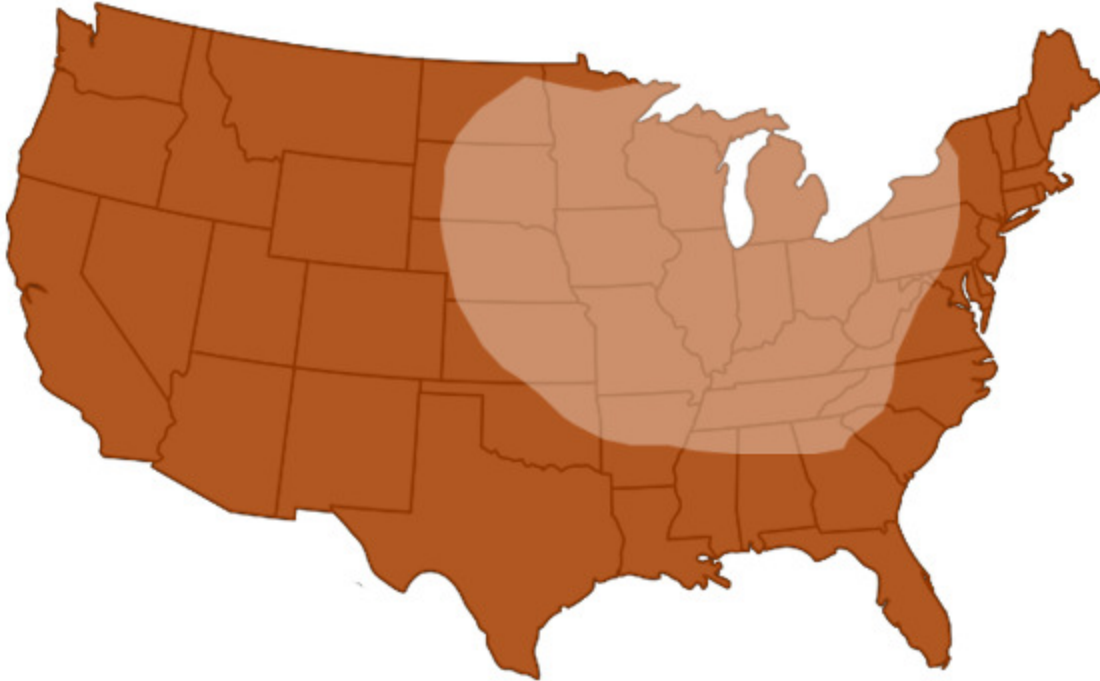


- * Ingenious design creates it's own hinge
- * Absolutely no on-site custom cutting or fitting
- * No unsightly screws, rivets, bolts or assemblies
- * All aluminum components - No rusting
- * Completely assembled and ready to install
- * Elongated elbow allows raised downspout to stay in place without special clips or Velcro
- * Tapered design adds strength and durability for years of use
- * All 16 colors available to match perfectly with existing gutter system

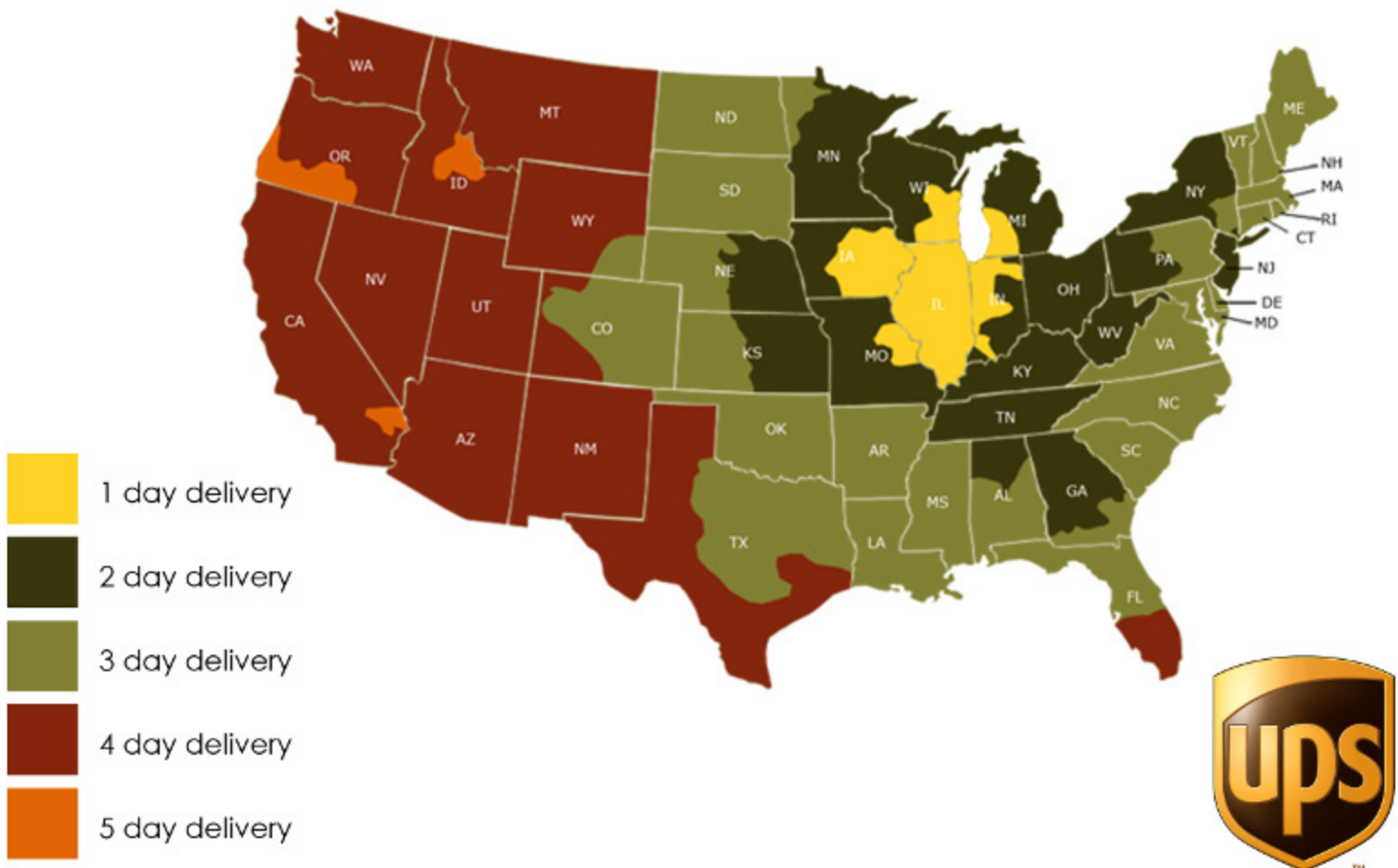
Shipping

 Delivery area - Our Trucks
Most areas weekly!

Please call us if you are interested in deliveries outside the area covered in our trucks as we are always able to ship via UPS or through common carrier anywhere in the world.



We ship orders daily by UPS. Simply call your order in by noon Central Standard Time and we will get it out that same day. Our mini and junior sized coils make it possible for us to even UPS gutter coil.



Sales & Marketing Tools

Use all the tools available to you. We offer a variety of handy items that we've designed to assist you with your day to day activities. Contact your sales person if you need any sales aides or if your're interested in having custom fliers tailored to your business

WARNING
ELECTRICITY KILLS
WATCH FOR WIRES
LYNCH ALUMINUM MFG. CO. PEORIA, IL 1-800-383-2321

CAUTION
DO NOT TRANSPORT THIS MACHINE WITHOUT COIL FED THROUGH ALL ROLLER STATIONS
LYNCH ALUMINUM MFG. CO. PEORIA, IL 1-800-383-2321

LYNCH ALUMINUM MFG. CO.
800 N UNIVERSITY ST. PEORIA, IL 61615
1-800-383-2321

SOFF-A-CHART

SPAN	12" HOLE	12" HOLE
12'	1.11	1.11
14'	1.55	1.55
16'	2.00	2.00
18'	2.44	2.44
20'	2.89	2.89
22'	3.33	3.33
24'	3.78	3.78
26'	4.22	4.22
28'	4.67	4.67
30'	5.11	5.11
32'	5.56	5.56
34'	6.00	6.00
36'	6.44	6.44
38'	6.89	6.89
40'	7.33	7.33
42'	7.78	7.78
44'	8.22	8.22
46'	8.67	8.67
48'	9.11	9.11
50'	9.56	9.56
52'	10.00	10.00
54'	10.44	10.44
56'	10.89	10.89
58'	11.33	11.33
60'	11.78	11.78
62'	12.22	12.22
64'	12.67	12.67
66'	13.11	13.11
68'	13.56	13.56
70'	14.00	14.00
72'	14.44	14.44
74'	14.89	14.89
76'	15.33	15.33
78'	15.78	15.78
80'	16.22	16.22
82'	16.67	16.67
84'	17.11	17.11
86'	17.56	17.56
88'	18.00	18.00
90'	18.44	18.44
92'	18.89	18.89
94'	19.33	19.33
96'	19.78	19.78
98'	20.22	20.22
100'	20.67	20.67

COIL-CULATOR

TOLL FREE 1-800-383-2321

WEATHER GRIP TITE

COIL SIZE	12" HOLE	12" HOLE
12'	1.11	1.11
14'	1.55	1.55
16'	2.00	2.00
18'	2.44	2.44
20'	2.89	2.89
22'	3.33	3.33
24'	3.78	3.78
26'	4.22	4.22
28'	4.67	4.67
30'	5.11	5.11
32'	5.56	5.56
34'	6.00	6.00
36'	6.44	6.44
38'	6.89	6.89
40'	7.33	7.33
42'	7.78	7.78
44'	8.22	8.22
46'	8.67	8.67
48'	9.11	9.11
50'	9.56	9.56
52'	10.00	10.00
54'	10.44	10.44
56'	10.89	10.89
58'	11.33	11.33
60'	11.78	11.78
62'	12.22	12.22
64'	12.67	12.67
66'	13.11	13.11
68'	13.56	13.56
70'	14.00	14.00
72'	14.44	14.44
74'	14.89	14.89
76'	15.33	15.33
78'	15.78	15.78
80'	16.22	16.22
82'	16.67	16.67
84'	17.11	17.11
86'	17.56	17.56
88'	18.00	18.00
90'	18.44	18.44
92'	18.89	18.89
94'	19.33	19.33
96'	19.78	19.78
98'	20.22	20.22
100'	20.67	20.67

Sorry we missed you!

☐ We will call you to schedule a visit.

☐ We would like to schedule a demo for you.

☐ We would like to schedule a training session for you.

☐ We would like to schedule a maintenance visit for you.

☐ We would like to schedule a repair visit for you.

☐ We would like to schedule a parts order for you.

☐ We would like to schedule a consultation for you.

☐ We would like to schedule a site inspection for you.

☐ We would like to schedule a safety training session for you.

☐ We would like to schedule a safety audit for you.

☐ We would like to schedule a safety inspection for you.

☐ We would like to schedule a safety training session for you.

☐ We would like to schedule a safety audit for you.

☐ We would like to schedule a safety inspection for you.

Weather Watch **GripTite**

Isac

BRUTE! **Buddy**

LYNCH ALUMINUM MFG. CO.
800 N UNIVERSITY ST. PEORIA, IL 61615
1-800-383-2321

MUSCLE!

LYNCH ALUMINUM MFG. CO.
800 N UNIVERSITY ST. PEORIA, IL 61615
1-800-383-2321

Leaf Believer

LYNCH ALUMINUM MFG. CO.
800 N UNIVERSITY ST. PEORIA, IL 61615
1-800-383-2321

LADDER-MAX™
STAND-OFF 55#B LIZES

SMALL HOLE SPEED SCREEN™
Same Product. More Protection.

It's A SNAP!

LYNCH ALUMINUM MFG. CO.
800 N UNIVERSITY ST. PEORIA, IL 61615
1-800-383-2321

Painted Rainware Products

LIMITED LIFETIME WARRANTY

LYNCH ALUMINUM MFG. CO.
800 N UNIVERSITY ST. PEORIA, IL 61615
1-800-383-2321

REGISTERED WARRANTY CARD

REGISTERED INFORMATION:

Customer Name: _____
Address: _____
City, State, Zip: _____
Phone: _____
Signature: _____
Date: _____

DISTRIBUTION INFORMATION:

Purchased from: _____
City, State, Zip: _____
C/O: _____

Kwik Flip

LYNCH ALUMINUM MFG. CO.
800 N UNIVERSITY ST. PEORIA, IL 61615
1-800-383-2321

Outlet Punches

LYNCH ALUMINUM MFG. CO.
800 N UNIVERSITY ST. PEORIA, IL 61615
1-800-383-2321

LYNCH ALUMINUM MFG CO.

Outlets For Any

LYNCH ALUMINUM MFG. CO.
800 N UNIVERSITY ST. PEORIA, IL 61615
1-800-383-2321

Gutter Hangers & Accessories

LYNCH ALUMINUM MFG. CO.
800 N UNIVERSITY ST. PEORIA, IL 61615
1-800-383-2321

Mini/Junior Coil

LYNCH ALUMINUM MFG. CO.
800 N UNIVERSITY ST. PEORIA, IL 61615
1-800-383-2321

800 N University St. Peoria, IL 61615

1-800-383-2321



Lynch Aluminum Mfg. Co.
8810 N. University St.
Peoria, IL. 61615

Toll Free 800-383-3231
309-692-3230
309-692-1120 Fax



We are pleased to announce that we now have a traveling sales representative here at Lynch Aluminum. Jace Fickler and our "traveling showroom" are soon coming to a town near you. We have completely customized a Sprinter van with all of our products, samples, brochures, sales aides, and anything else that could be useful to our customers. We have even included a roof section for gutter guard installation and other demonstrations of various products. We have supplied Jace with all of the training, knowledge, and products to be able to go anywhere in our delivery area and provide our current customers and potential clients an exceptional service. Showcasing brand new products, providing unique installation tips, and offering samples of any of our products are just some of the activities our new program provides. We would love the opportunity to come to your facility and show you all we have to offer. Please give us a call to find out when we will be in your area next!



Product stock is subject to change. To the best of our knowledge, products listed in this catalog are accurate. Lynch Aluminum Mfg. Co. reserves the right to correct any listing in the event of adding and/or expiring products.

www.LynchAluminum.com

© 2013 Lynch Aluminum Mfg. Co. All Rights Reserved.

All images, graphics, and content are © Copyright 2013 protected by Lynch Aluminum MFG Co. All Rights are reserved.