



Army OneSource (AOS) Services Locator on the iPad™ Quick Start Guide

Developed 04/2010



Notice

This Quick Start Guide and all of the information contained herein are confidential and proprietary to U.S. Army Family and MWR Command (FMWRC). By accepting this document, the recipient agrees to use this document and its associated materials solely as an end-user of this software application. The recipient further agrees to hold the information in this document as personal and confidential and, except as required by law, not to disclose this information to any other person or organization.

© 2010 U.S. Army Family and MWR Command. All Rights Reserved.
This document was prepared on behalf of:

Shaunya Murrill
Chief, Outreach and Strategic Integration Division
Family Programs Directorate
Family and Morale, Welfare and Recreation Command

2406 Gun Shed Road, 2nd FL
Ft. Sam Houston, TX 78234-1222

email: Shaunya.Murrill@us.army.mil
Army OneSource - www.myarmyonesource.com/

Welcome to ARMY OneSource's Services Locator on the iPad™

The Services Locator on the iPad makes it easy to find services anywhere, at anytime!

Searching for services is simple – Enter your location, tap search and view your results. From the search results, you can get directions and add services to your contacts.

Who Will Find the Services Locator iPad App Useful?

Great for when you are on the go – the Services Locator was designed to help Soldiers, Families and others find services and get directions. Are you looking for childcare, housing, healthcare or other programs and services? Services Locator on the iPad can help you find those services - everywhere you go.

Getting Started

Download the free Services Locator application from the App Store and sync it to your iPad.

Once the app is synced to the iPad, tap the **Services Locator** icon to open the application.

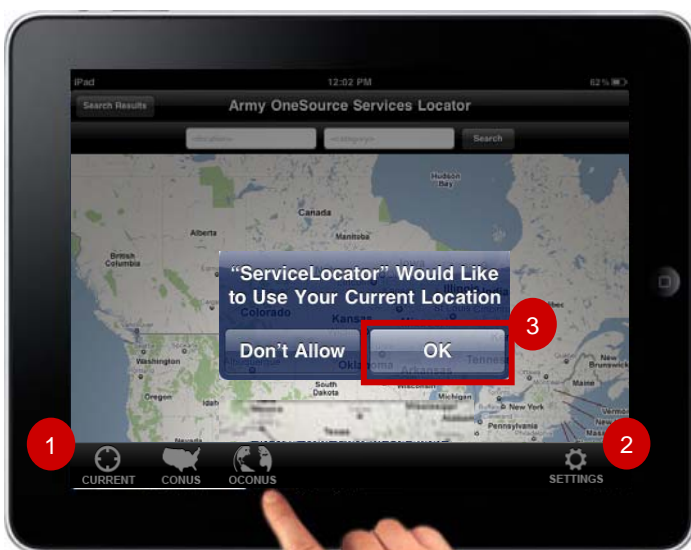


Find Current Location

Services Locator can be configured to find your current location on the map. When opening Services Locator for the first time, you will be prompted to use this feature.

Tap **'OK'**, to always center the map on your current location when the app opens. Tap **'Don't Allow'** to turn this setting off. The app will then open with a view of the US map.

You can always change your settings later or view your current location at anytime.



To show your current location

1. Tap the **Current** icon.



To configure default settings

2. Tap the **Settings** icon.
3. Tap **OK**, to use your current location.



Find CONUS vs. OCONUS Services

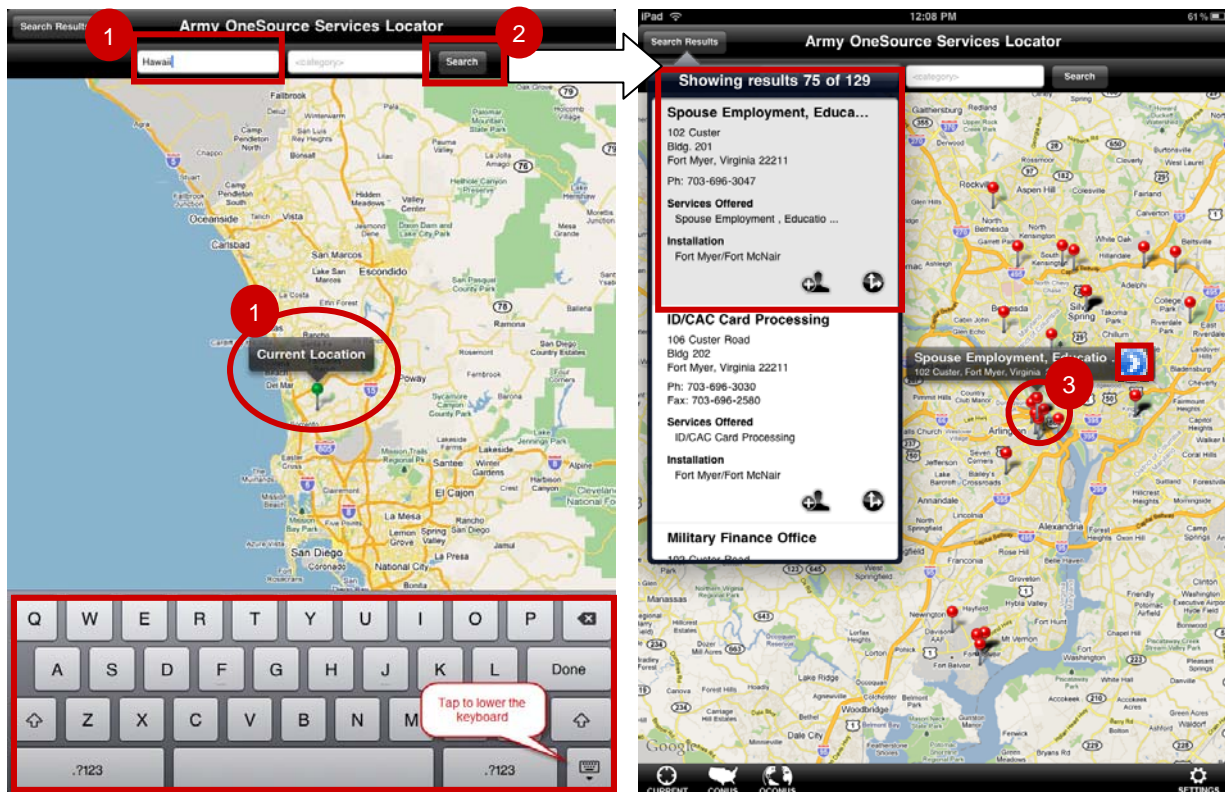
Tap **CONUS** or **OCONUS** to search for services inside or outside the Continental US.



Search for Services

Searching for services is simple – Enter your location, tap search and view your results. Notice that you can enter your Location more than one way.

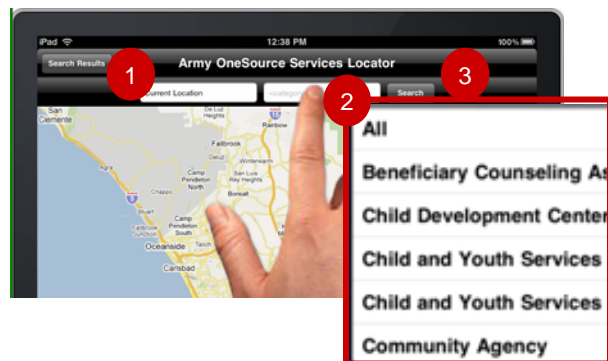
1. Enter your **Location**.
 - Use your **Current Location**, or
 - Tap the map to zoom in to a location, or
 - Tap **Location** to bring up the keyboard and type city, zip or address
2. Tap **Search**, to mark ALL services on the map.
3. View your Search Results.
 - Tap a **Pin** to see its name and address.
 - Tap the **Blue Arrow** to highlight the service in the results list.
 - Select a **Service** from the results to see it on the map.



Filter the Results

You can filter or limit your search results to display specific types of services e.g. Child Development Centers, Counseling, etc.

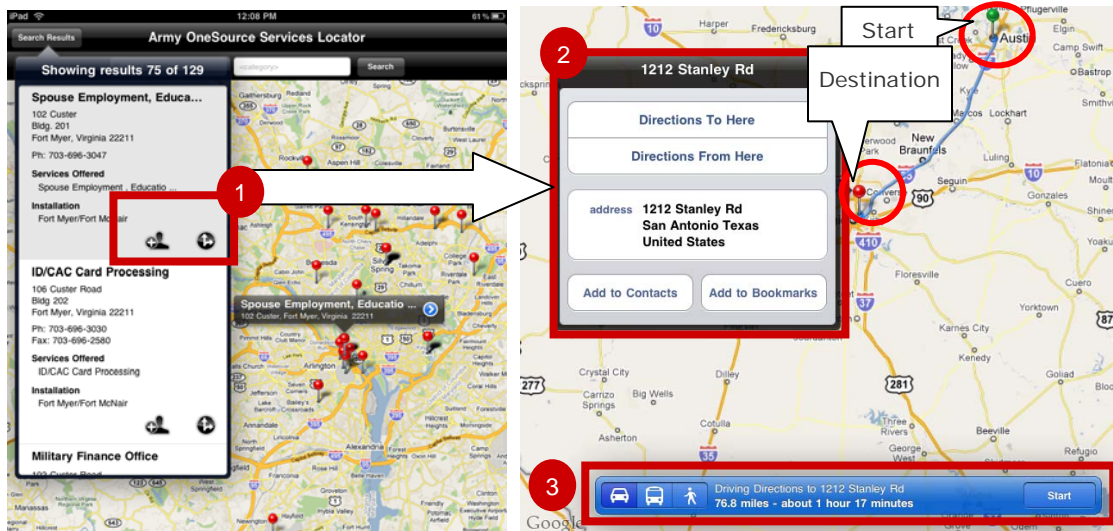
1. Enter your **Location**.
2. Tap **Services** and select a type of service from the drop-down list.
3. Tap **Search**, to mark ALL services.



Get Directions

Once you find a service, you can get directions to the location.

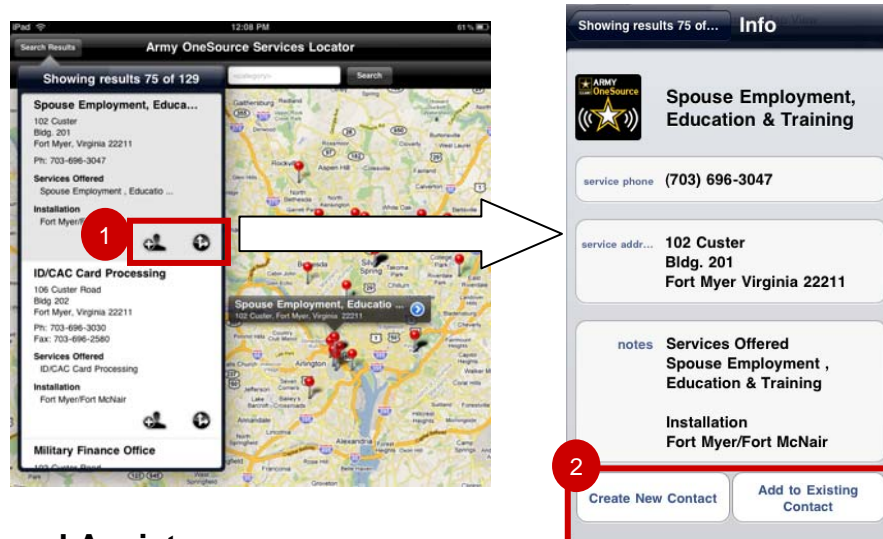
1. Tap the **Directions** icon from the search results list. The iPad Maps app opens to show driving directions, travel time and the route on the map.
2. Tap 'Directions To Here or Directions From Here' to view or reverse the directions.
3. Use the toolbar buttons to get walking, driving or transit directions.



Add Contacts

Once you find a service, you can add it to your contacts so you can locate them later.

1. Tap the **Add Contact** icon from the search results.
2. From the Info pop-up window, tap **Create New Contact**.



For Additional Assistance

If you have additional questions that this guide did not answer, contact the DefenseWeb Technical Support Team at (877)811-ARMY or customersupport@myarmyonesource.com.