



Quality and Performance without Compromise
Custom built in New Zealand

KK 5500 12 Seat Jet Tour Boat

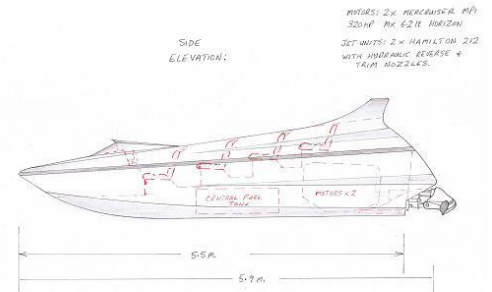


Proudly made in New Zealand for over 30 years



Boat Specifications:

- L.O.A** 5.5 m
- Beam:** 2.3m
- Deadrise:** 10 – 12 degrees constant
- Height :** 2.4 metres
- Seats:** 4 rows of seats, (1st row, 2 + driver / 2nd row, 3 / 3rd row 3, 4th row 3 across) **11 + driver.**



Maximum passenger load : 1,050 kgs

Engine : Single 450hp MarinePower 6.2 Litre petrol LS3 factory marinised or 520 hp Marinepower LSA

Jet Unit: 1 x Hamilton 213 Jet Unit

Paint: Marine specification Altex paint

Fuel Tank: 200 litres

Construction: marine grade 5083 certified alloy.

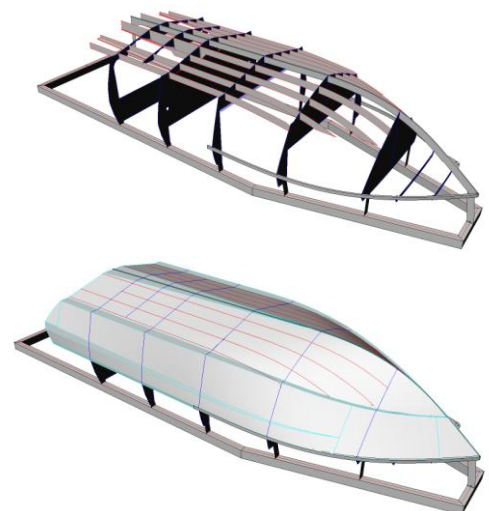
Stringers: 10mm, Frames: 4mm

Centre hull keel plate: 10mm

Hull: 6mm

Topsides: 4mm

Transom: 6mm.



2





Standard Boat Package

- Foot rests and grab rails for each passenger
- Individual drivers bucket seat, straight cushion passenger seats
- Alloy windscreen with deflector
- Fully marine upholstered dry foam seats, easily removable bases for drying and cleaning
- Sealed buoyancy areas -semi sealed engine compartment for buoyancy
- Rear wing with air intakes for motor
- Portofino style transom with rear platform
- Central mounted fuel tank forward of engine fully plumbed
- Storage areas each side of engine, accessible from engine bay
- Drive shaft coupling to suit application
- Marine battery set up with full isolation capability
- Two heavy duty bilge pumps in engine bay and one in the seating area with auto float switches,
 - Three way bilge switch (manual/off/auto)
- Full gauge set on dash to suit engine management
- Eight way switch panel
- Tinned wiring to all electrical components
- LED navigation lights
- Hydraulic steering and hydraulic reverse bucket controls



Options/Upgrades

- Boat cover
- Additional paint colours
- Graphics and signage
- Full suspension drivers seat
- Anti-foul
- Hand held fire extinguisher mounted mid cockpit area
- Driver operated Seafire MD-300 fire extinguisher system in engine bay.
- Individual upholstered passenger seats
- LED underwater lights



- LED lighting strip in seating area
- VHF radio and aerial on wing
- Flag pole on wing
- Fusion stereo system (wireless Bluetooth streaming)and four speakers
- Stereo upgrade. Four speakers plus amp plus sub woofer
- Tandem axle alloy trailer with brakes and spare wheel
- Weed grill rake
- Two buoyancy life rings and holders
- GPS and chart plotter (including speed over ground)
- Compass
- Video camera
- Closed circuit TV monitor
- Lifejackets and water proof capes
- Portable alloy beach loading bow step
- Marine dual trumpet horn
- LED driving light bar
- Anchor and rope
- Spares packages: impellers,driveshafts,cables,bearings etc
- Safety kit: first aid,flares,bailer,throw bag etc
- Marine survey
- Driver training Programme



Operating Conditions

Kwikkraft boats are built to suit river , lake and sea conditions as standard but can be constructed to suit individual requirements .These boats are operating all around the world in differing conditions .



* Boats are built to Maritime New Zealand rule 82 standards for carrying passengers and rule 40 for construction.



* Noise can be controlled and minimised

* All boats are built to a extremely high standard of workmanship with quality materials and components.

Warranties

Engines and jet units have their respective factory warranties. Term of warranty is dependant on where the boats are operating and conditions they are working under. Kwikkraft boats structural hull warranty for commercial use is 12 months (provided operation is within factory guidelines) and all parts, materials and paint have a repair or replace warranty for 12 months . Full details are specified in the Construction and Supply contract provided by KwikKraft.

KwikKraft Boat Service Programme

The Kwikkraft team will provide a factory Service Programme which identifies service and maintenance checks required when a new boat is commissioned. For the warranty to remain in place the owner must have the service and inspections completed as required by the manufacturer.

Insurance

Boat insurance is covered by KwikKraft until sea trials are complete. After issue of the handover certificate all insurance is the owner's responsibility.



KwikKraft are builders of custom alloy Tour Jet boats from 8 through to 24 seaters for use on rivers and the sea. They have four standard alloy boats – a 12 seater, an 18 seater and two 24 seaters. (sea and river)



Kwikkraft are one of the world's leading manufacturers of custom built alloy Tour Jet boats and have boats operating in USA, Australia, Korea, Hong Kong, Croatia, Finland, Turkey, Lebanon, Africa and New Zealand.





KwikKraft Boats Points of Difference :

Hulls are designed by a Professional Designer, renowned New Zealand boat designer Scott Robson and the plans and systems are approved by a New Zealand Government accredited Naval Architect. The Tour Jet hulls have an exceptional load carrying ability, exceptional stability and have low planing speeds.

Boats are built on a jig from computer cut marine grade alloy which means every boat is identical, they are therefore built strong, built to last and will not twist or bend. The boats are inspected by a Marine Surveyor during the build which gives purchasers the security of knowing the boats comply with Maritime New Zealand Rule 82, from new. This is important when new boats enter most of our export destinations or if operators on-sell boats for use by other Tourism operators.

KwikKraft Jet Tour boats are proven over time with the likes of Rapid Jets, Taupo , New Zealand having run their twelve and fifteen seater boats for over fifteen years with outstanding performance, safety, comfort and handling in river conditions.



The river hull is 10 degrees deadrise and gives the driver the ability to do slow, lazy jet spins with excellent safety and control.

The 14 degree sea hull also has excellent Jet spin capabilities with passengers experiencing little G- force if drivers are trained correctly.



Tour boats feature tiered (staged) seating allowing passengers to see the water conditions ahead. Internal width is maximised for seating. The boats have high sides with good freeboard even at displacement.

The design is aimed at the ultimate in passenger comfort and safety. They get an enjoyable, comfortable and dry ride. The seat spacing, safety

rails and ergonomic seating ensure that varying sizes of passengers can comfortably be carried.

KwikKraft Tour Boats are designed to be easy on drivers, passengers and engines. This results in lower stress on the hull and less maintenance overall. The drivers seat and cockpit area give a lot of room for the comfort and safety of the driver ensuring that they can operate for longer periods with less fatigue.

New Business Set Up

KwikKraft can assist off shore clients in the set up of a new Jet Boat tour business. This extends from help in gaining customs and import clearance through to gaining maritime consent to operate. They have a financial spreadsheet that is available for purchasers to assist in budgeting for possible passenger numbers and financial returns that can be achieved.



KwikKraft's experienced staff can advise on the combinations of hull size and type of boat that will optimise a new start up business allowing their customers to be fully operational in as shorter time frame as possible.

Safe Operational Plans

The KwikKraft Safe Operational Plan covers all the necessary systems and procedures required to start up a new business. A simple template allows check lists to be monitored and records to be kept which can ultimately assist in legal and insurance compliance.

KwikKraft's experienced staff also have a vast network of existing operators and maritime suppliers that can also assist in setting up in countries where climate or water conditions may introduce new challenges.

Driver Training

KwikKraft are able to provide driver training in New Zealand or on site once the new boats are commissioned. A single engine KK 5800 12 seater jet tour boat is used by kwikKraft in New Zealand for driver training allowing drivers to become competent before the new boats come into work.

KwikKraft provide the opportunity for new or existing Jet Tour operators to get drivers trained to operate KwikKraft Jet boats on the sea, lakes or in river conditions. River training incorporates conditions from shallow braided streams through to fast flowing rapids in rocky gorge areas. The training schedule begins with basic jet boat handling through to advanced driver skills on shallow water and open sea or lake conditions. The training also incorporates basic river reading and navigation skills, hazard identification, controlled jet spins, power brake manoeuvres and docking in flowing water. Drivers will also be taught the basics of engine, boat and jet unit maintenance. Skills attained will be in line with Maritime New Zealand standards.

The unique handling characteristics of a Jet boat plus the extra weight of 11 passengers require the driver to be very skilled so that the passengers have a safe, comfortable and yet exciting trip. They must be aware of the river or harbour rules, safe cornering set up lines and drive lines. If required drivers can receive advanced training in New Zealand in skills such as white-water boat handling, negotiating rapids, and driving in narrow braided streams such as the lower Waimakariri river.



Driver selection and training is paramount for the success of a new business. The drivers must be carefully selected as they are the face of the business. This includes their approach and attitude with passengers through to the safe operation and maintenance of the boats. Training also includes the process of carrying out daily boat checks and what to do in an emergency boat handling situation. In terms of adopting best practice ongoing driver training is essential in skill enhancement.

The KwikKraft Team – Quality and Performance without Compromise

Based in the South Island of New Zealand at Rangiora, KwikKraft Boats build custom alloy commercial Jet Tour boats, a wide range of family jet boats, race boats (tunnel and mono hulls) an Offshore range of boats and Offshore Pontoon boats.

Gary Tomes – Director gary@kwikkraft.co.nz *mobile :* +64 21 280 1123

Gary has over thirty years experience with all types of boats. Six times World Jet Sprint Champion Gary has been an innovator in the development of alloy boat hulls in New Zealand. His company Icon Brands International builds the KwikKraft range, the Ramco boat range and a number of large alloy recreational and commercial boats. Gary is uncompromising in his quest for excellence in design and construction and personally oversees the building of every boat in the factory.

Kevin Jenkins – Director kevin@kwikkraft.co.nz *mobile :* +64 27 577 4232

Kevin has over forty years experience with all types of boats including off-shore ocean sailing. He has used practical experience gained in adventure jet boating and river racing to put together a driver training programme and undertakes the commissioning of boats off-shore. Kevin has raced and sprinted his own jet boats and as a navigator has been placed in World Jet Boat Marathons. He holds a Maritime New Zealand commercial jet boat drivers licence and operates a charter business 'Jet Extreme (NZ)' with a KK 5800 River 12 seater Jet tour boat.

Web sites

KwikKraft boats can be found on www.youtube.com – type in 'KwikKraft' or 'Bullet Jet boat' Or go to www.aucklandadventurejet.co.nz , www.aucklandjetboattours.co.nz or the website www.kwikkraft.co.nz.



Finland : under Sarkanniemi Adventure Park and go to Speed Boat or
<http://www.youtube.com/watch?v=mV54n84MEb8> or
<http://www.sarkanniemi.fi/en/attractions/speedboat>

Rapids Jet, New Zealand : <http://www.rapidsjet.com/>

Jet Adventure , Lebanon : <http://www.youtube.com/watch?v=jrI43qoX2ZU>

Bullet Jet, Croatia : http://www.youtube.com/watch?v=_pWk8TwhiM

Turkey : Kapadokya Jet Boat and Gondola
<http://www.youtube.com/watch?v=s4ueTKa3aU4> and
<http://www.youtube.com/watch?v=qp3EXyzpnKo>

Zambia,Africa : <http://www.youtube.com/watch?v=9044fN8qAqA> and
<http://www.safpar.com/jet-boat.html>



*KwikKraft
welcome an
inspection of
their factory in
Rangiora..*



Factory and Postal Address : 305 Flaxton Road, Rangiora , South Island, New Zealand

Phone + 64 3 313 3560 email : sales@kwikkraft.co.nz

web: www.kwikkraft.co.nz