

Infrared Model of the Property



Figure 1: 3D Model of the Property



## Contents

- Property Overview
  - Surfaces
  - Perimeter, Pitch and Surface Area
  - Edge Measurements
  - Edge Type
-

## Property Overview



Figure 2: Overview



Surfaces

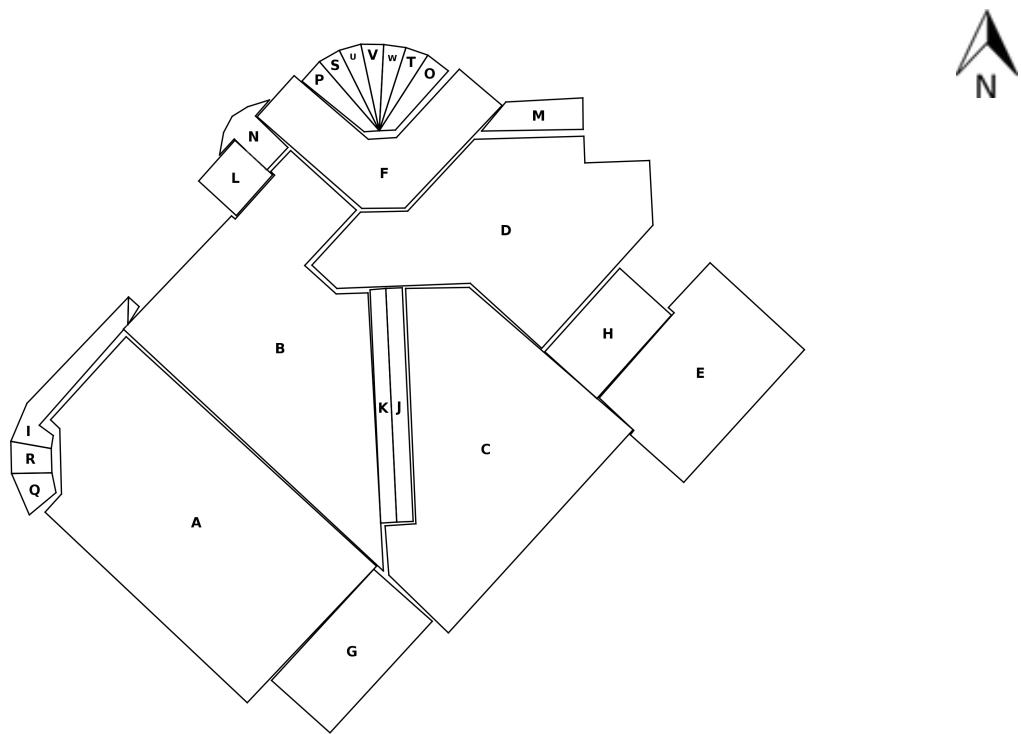


Figure 3: Surfaces

Perimeter, Pitch and Surface Area

Label	Perimeter	Slope	Pitch	Surface Area
A	583' 3"	1.1	0.2/12	19488.14
B	644' 10"	0.61	0.1/12	17040.92
C	545' 3"	0.24	0.1/12	15380.33
D	522' 7"	0.7	0.1/12	13050.83
E	351' 3"	0.97	0.2/12	7152.47
F	373' 11"	0.81	0.2/12	5095.64
G	262' 3"	0.52	0.1/12	3863.78
H	207' 11"	0.96	0.2/12	2554.35
I	242' 7"	14.48	3.1/12	1313.8
J	286' 12"	16.95	3.7/12	1297.63
K	286' 10"	18.61	4.0/12	1292.48
L	120' 11"	1.27	0.3/12	911.72
M	141' 11"	0.92	0.2/12	875.56
N	141' 5"	3.1	0.7/12	706.66
O	122' 8"	11.12	2.4/12	537.58
P	123' 6"	11.08	2.3/12	532.06
Q	81' 8"	13.96	3.0/12	389.72
R	80' 1"	12.86	2.7/12	381.93
S	118' 5"	10.32	2.2/12	339.58
T	116' 5"	10.42	2.2/12	335.55
U	116' 10"	10.84	2.3/12	332.31
V	115' 2"	11.11	2.4/12	327.53
W	114' 4"	11.18	2.4/12	325.25
X	36' 12"	14.87	3.2/12	50.34
Total	-	-	-	93576.16

Table 1: Perimeter, Pitch and Surface Area (units: ffi / ffi <sup>2</sup>)

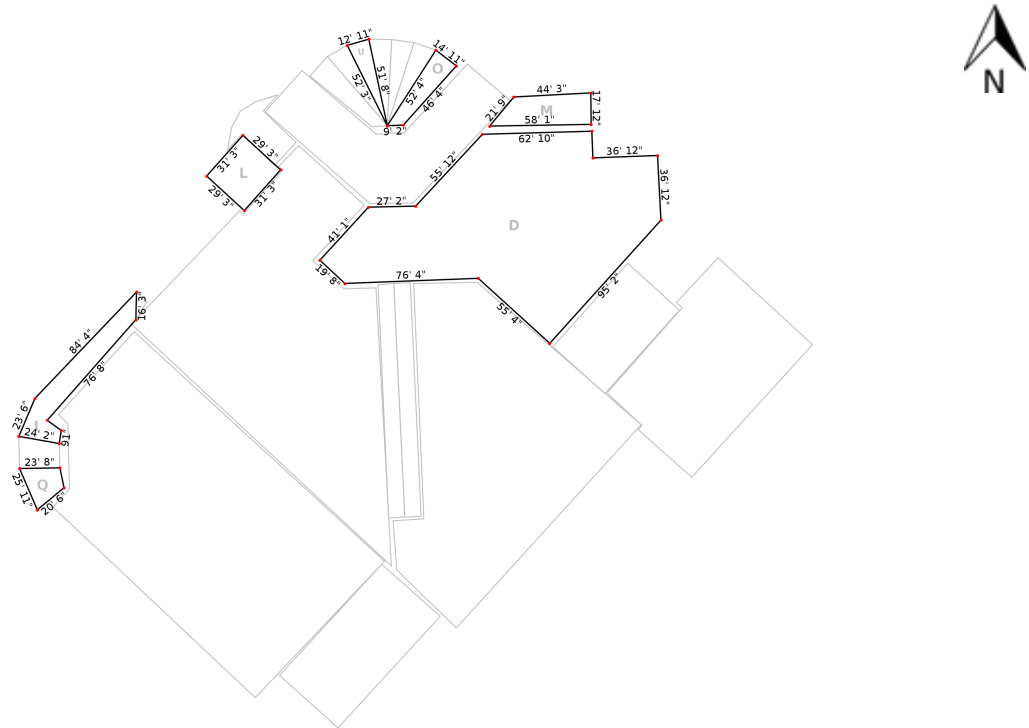
Edge Measurements.

Surface(s): A, B, C, E, F, G, H, S, T



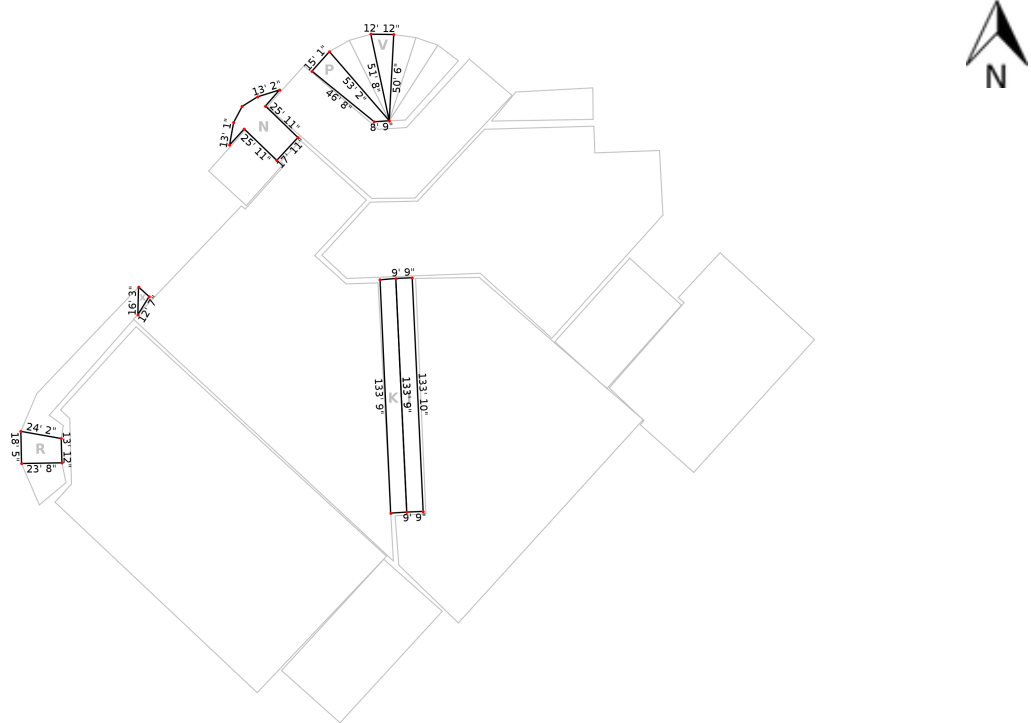
Figure 4: Edge Measurements

Surface(s): D, I, L, M, O, Q, U



### Figure 5: Edge Measurements

Surface(s): J, K, N, P, R, V, X



### Figure 6: Edge Measurements

Edge Measurements.

Surface(s): W

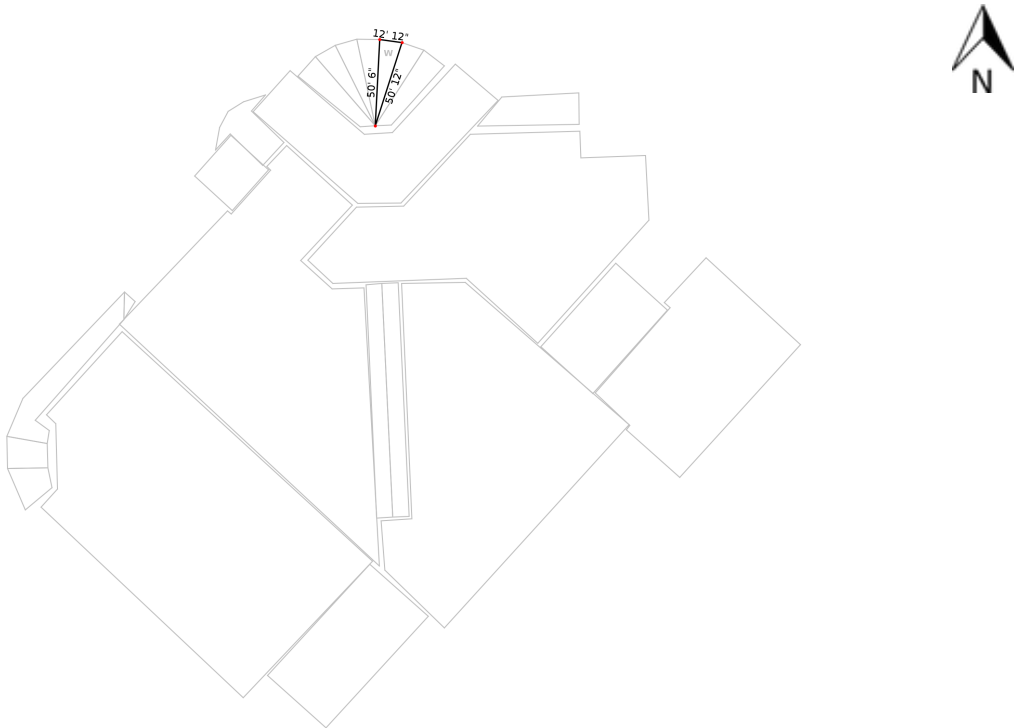


Figure 7: Edge Measurements



Edges Types

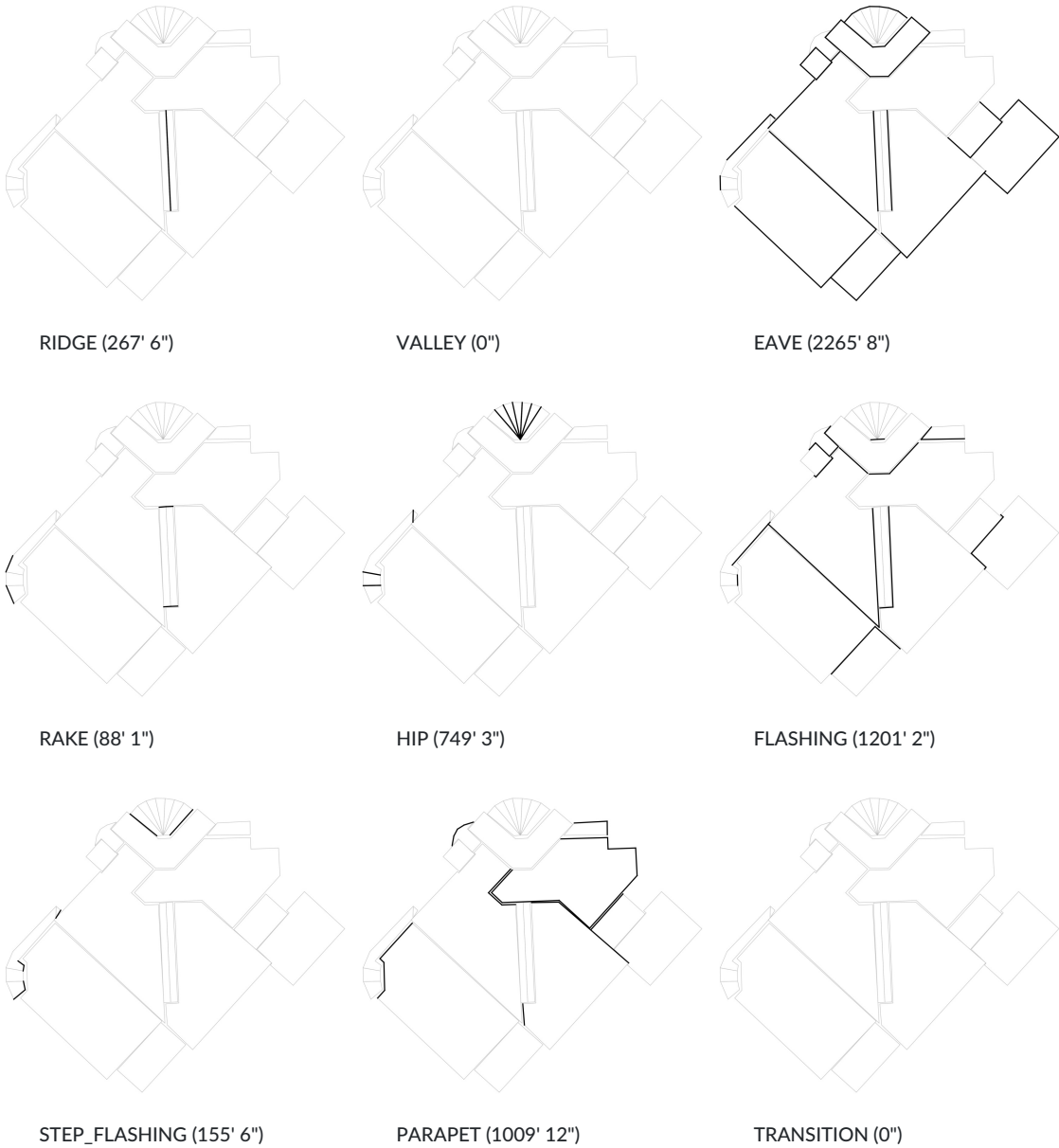


Figure 8: Roof Edge Classification (units: ffi)

Edge Type Summary

Classification	Edge Count	Total Length
RIDGE	2	267' 6"
VALLEY	0	0"
EAVE	40	2265' 8"
RAKE	6	88' 1"
HIP	18	749' 3"
FLASHING	27	1201' 2"
STEP_FLASHING	7	155' 6"
PARAPET	26	1009' 12"
TRANSITION	0	0"
Total	126	0

Table 2: Edge Type Summary (units: ffi)