



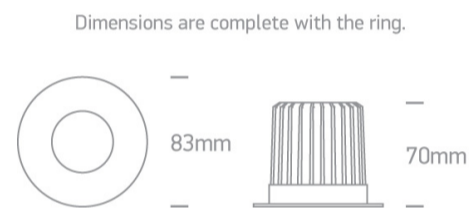
6W COB LED fire rated recessed spot IP65 with interchangeable rings.

Requires 350mA driver. Ring must be ordered seperately.

Complies with standard EN60598-1 and any other specific standards.



Downloads Dimensions



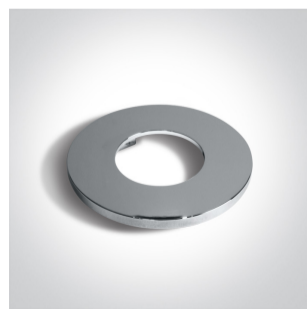
Gallery



Must be ordered separately



050042/B



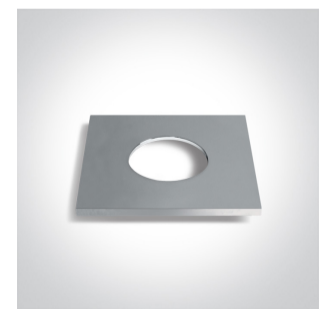
050042/C



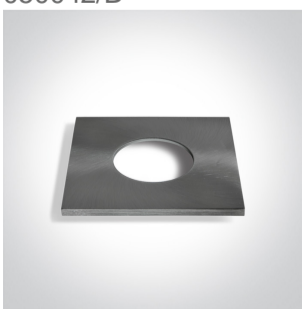
050042/MC



050042/W



050042A/C



050042A/MC





89008

Physical Specification


Item Group	02 Recessed Spots Fixed LED
Family	The Fire Rated IP65 Range
Order Code	10106PF/W
Material	Die Cast
Shape	Circular
Height	70mm
Diameter	83mm
Cutout Hole Diameter	68mm
Recessed Ceiling	Yes
Depth Required	90mm
Indoor	Yes
Outdoor	Yes
Adjustable	No

Electrical Characteristics

Fitting

Input Type	Constant Current
Input Current	350mA
Safety Class	
Power(Watts)	6W
IP Rating	IP65
Light Source	LED built in
LED Type	COB
LED Brand	Bridgelux
Cable Length	40cm
F Mark	

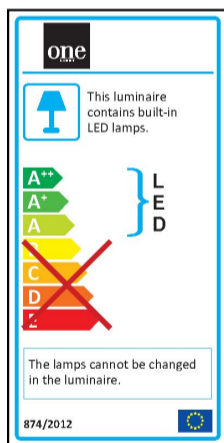
Illumination Data

Colour Temperature	3000K
Lumen Output	500lm
Light Efficiency	83,33lm/W
CRI	80
Beam Angle	40°
Illumination Diagram	

Packing Info

Box Length	12cm
Box Width	10cm
Box Height	8,5cm
Box Weight	0,286kg
Pcs/Carton	20
Barcode	5291889047056
HS Code	9405409900

Energy Label



Warranty

3 Years

Weee Directive

Yes
